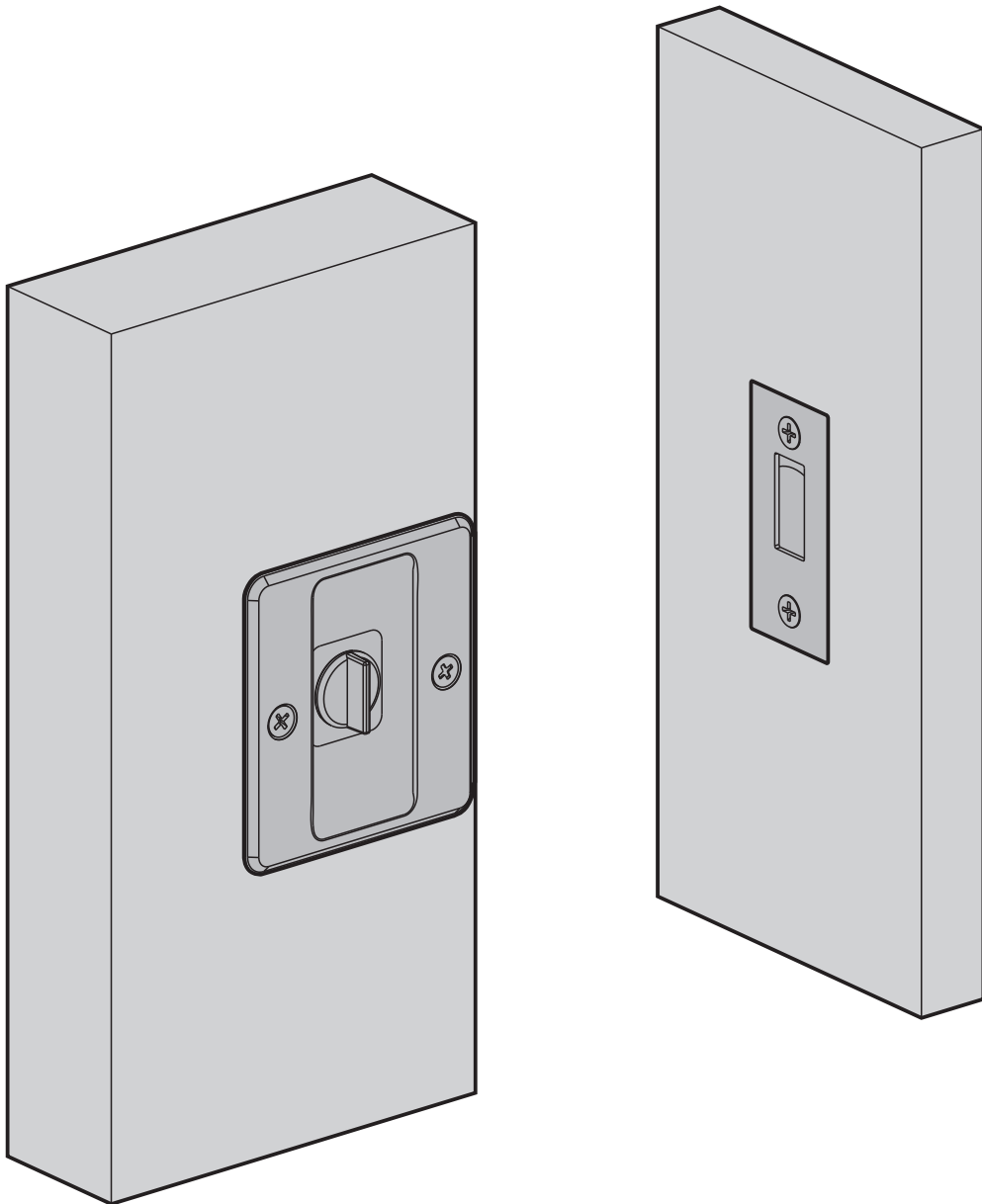
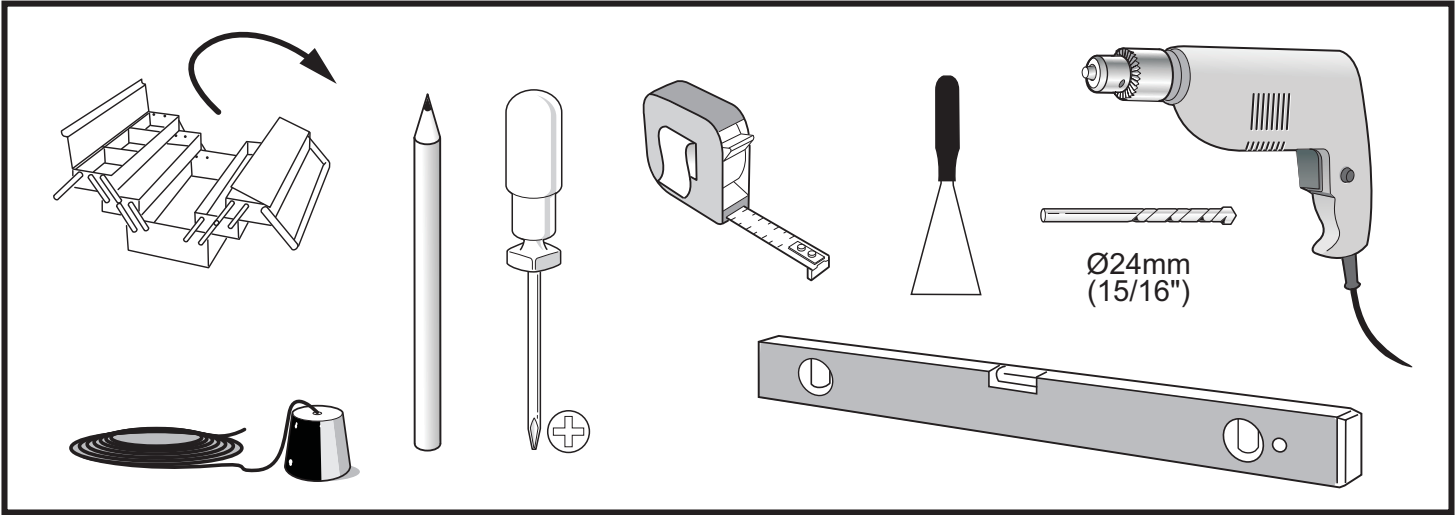


# Installation Manual

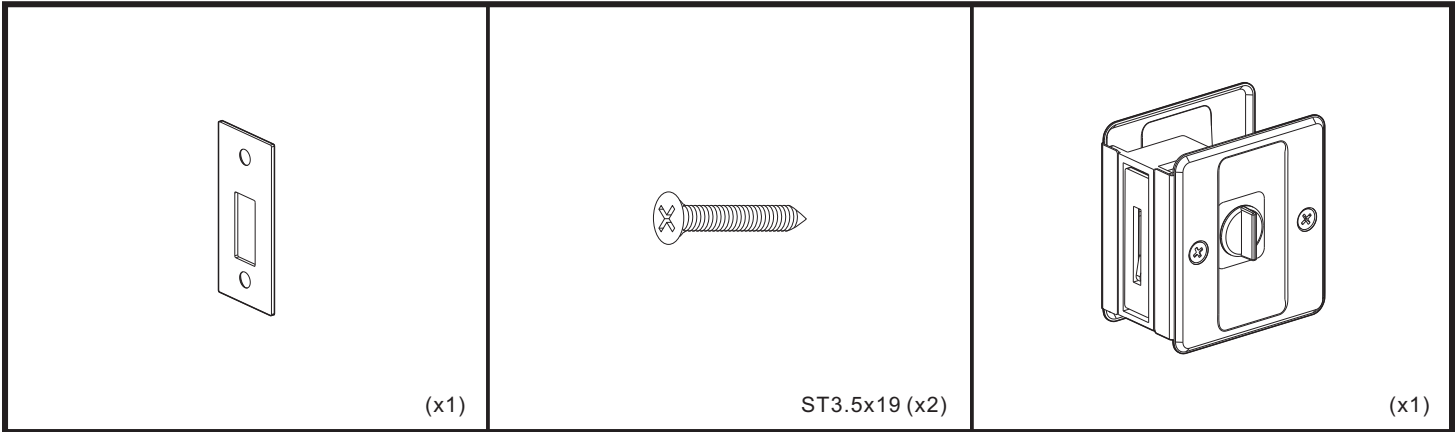


# PRE-INSTALLATION

## TOOLS REQUIRED



## HARDWARE INCLUDED



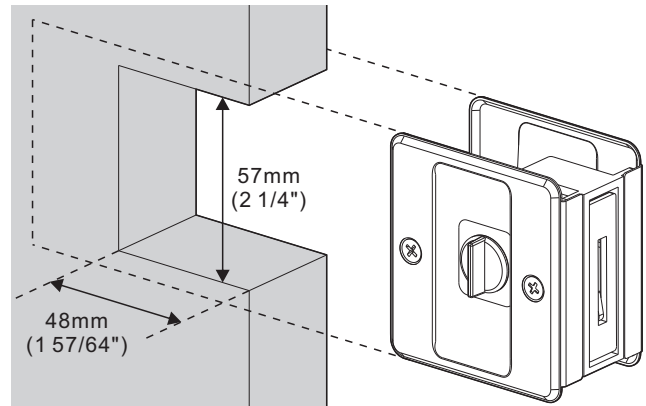
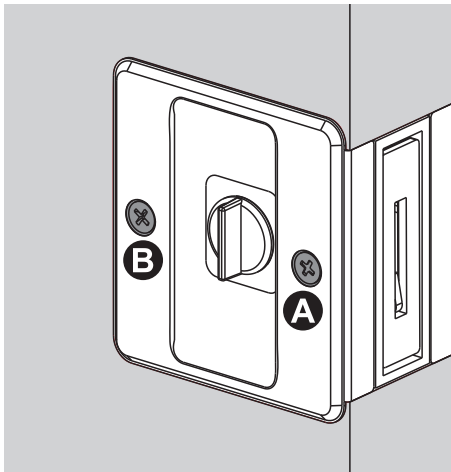
# INSTRUCTIONS

## Pocket Door Pull with Privacy Locking

Fits doors 35mm (1-3/8") to 40mm (1-4/7") thick

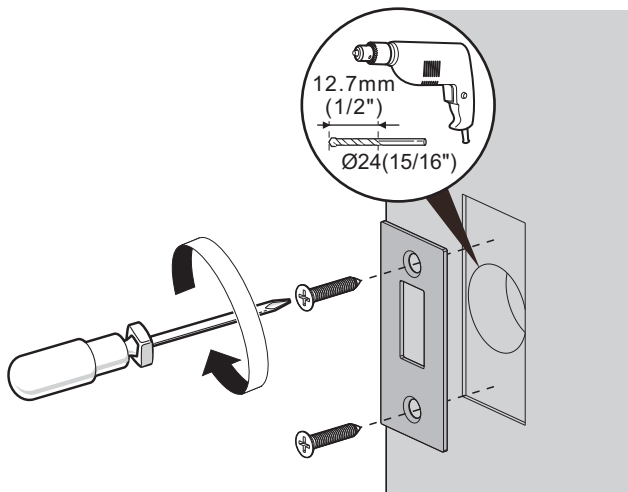
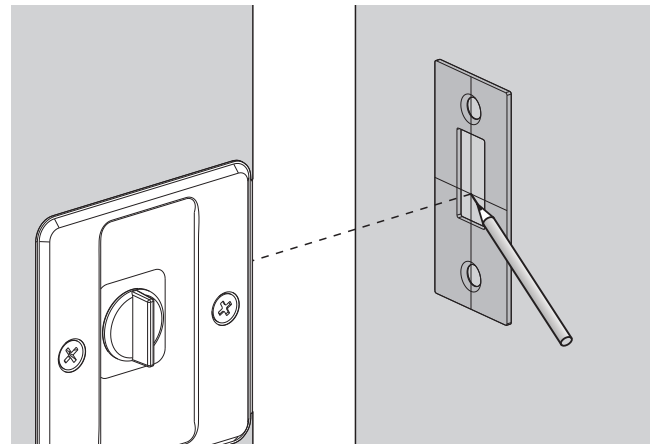
This lock is assembled for doors sliding open right to left from locking side.  
For doors opening left to right from locking side, see instructions below for reversing plates.

- 1 Cut one simple notch in door 57mm (2-1/4") high and a 48mm (1 57/64") deep. Slip lock into position as shown.



- 2 Fasten machine screws (A)# on both sides and adjust for door thickness. Then insert wood screws (B) and tighten.

- 3 (A) Mark horizontal centerline on jamb, the center of strike corresponds to the center of lock body.  
(B) Mark vertical centerline. Close door and rotate turnbutton to locate mark on jamb surface.  
(C) Center strike within indicated lines and marked jamb surface.  
(D) Mortise and make the strike fits flush in jamb.

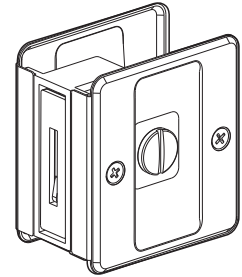


- 4 Drill a 24mm (15/16") diameter hole in the center of mortise area and 12.7mm (1/2") deep. Screw strike plate into position using flat head wood screws.

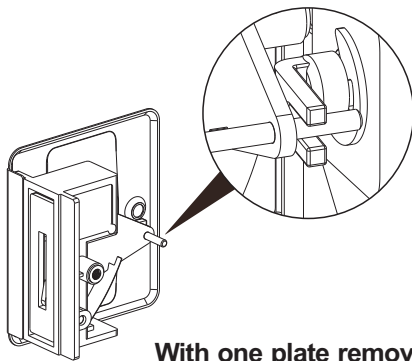
## TO ASSEMBLE AFTER REVERSING PLATES

To reverse outside plates on lock assembly :

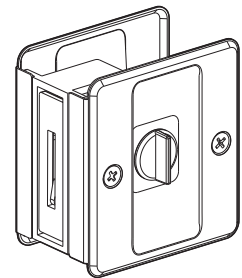
- 1.Remove machine screw on both side.
- 2.Change plates from side to side and make sure fork arm engages rocker pin.
- 3.Then re-assemble.



**Before changing plates**



**With one plate removed**  
**Be sure fork arm engages rocker pin when reversing plates**



**After changing plates**