

STRING LIGHT

by a sunny day 

IMPORTANT NOTE

Read the entire manual carefully before using this device

CE RoHS 
MADE IN CHINA

IMPORTANT SAFETY INSTRUCTIONS DO NOT DESTROY

Thank you for purchasing Globe String Lights . When using electrical products, basic precautions should always be followed including the following:

- Read and follow all safety instructions.
- Do not use seasonal products outdoors unless marked suitable for indoor and outdoor use. When products are used in outdoor applications, connect the product to a Ground Fault Circuit Interrupting (GFCI) outlet. If one is not provided, contact a qualified electrician for proper installation.
- Do not mount or place near gas or electric heaters, fireplace, candles or other similar sources of heat.
- Do not secure the wiring of the product with staples or nails, or place on sharp hooks or nails. Install only using the mounting means provided.
- Do not let lamps rest on the supply cord or on any wire.
- Do not use this product for other than its intended use.
- Do not hang ornaments or other objects from the cord, wire, or light string.

1

- Do not close doors or windows on the product or extension cords as this may damage the wire insulation.
- Do not cover the product with cloth, paper or any material not part of the product when in use.
- This product has a polarized plug (one blade is wider than the other) as a feature to reduce the risk of electric shock. This plug will fit in a polarized outlet only one way. If the plug does not fit fully in the outlet, reverse the plug. If it still does not fit, contact a qualified electrician. Do not use with an extension cord unless plug can be fully inserted. Do not alter or replace the plug.
- Read and follow all instructions that are on the product or provided with the product.

PACKAGE CONTENTS

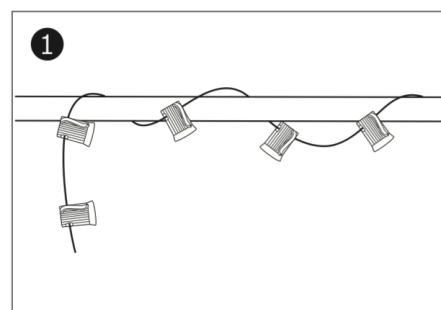
G40 LED light bulbs x 27 Cable with Empty E12 Socket x 25 User Manual x 1

SPECIFICATIONS

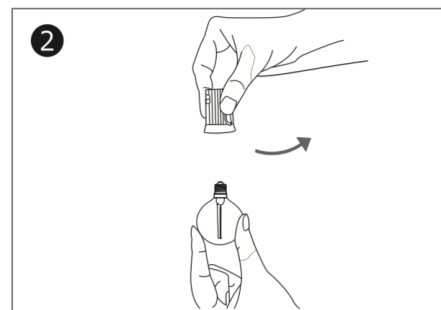
Power	4.5W total
Input Voltage	AC100-240V 50-60HZ
Bulb Quantity	27 bulbs (2 spare bulb)
Wire Length	10 meter

2

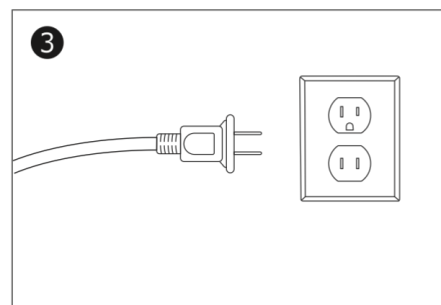
INSTALLATION



Install cable with the empty sockets in desired location.



Screw bulbs into the empty sockets one by one.



Connect the AC plug to the power source and lights are on.

3

CAUTION

- Use lamp (bulb) screws-base up position only.
- Disconnect plug before replacing lamp (bulb) or servicing.
- Please pull off the plug when it is not in use.
- Attention: You need open the lid of the female plug and connect the new AC plug to the female plug.

CAUTION

RISK OF SHOCK - AVOID MAKING CONNECTIONS OR DISCONNECTIONS WHEN THE EQUIPMENT IS WET.

4

CORRECT DISPOSAL OF THIS PRODUCT



(Waste Electrical & Electronic Equipment)

This marking is shown on the product, or its literature indicates that it should not be disposed with other household wastes at the end of its working life.

To prevent possible harm to the environment or human health from uncontrolled waste disposal please separate this from other types of wastes and recycle it responsibly to promote the sustainable reuse of material resources.

Household user should contact either the retailer where they purchasing this product or their local government office, for details of where and how they can take this item for environmentally safe recycling.

Business users should contact their supplier to check the terms and conditions of the purchase contracts. This product should not be mixed with other commercial waste for disposal.

5