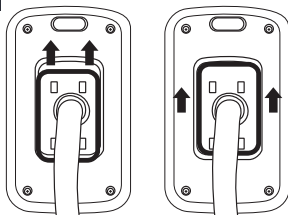


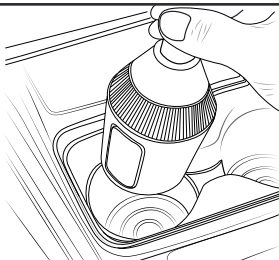
INSTRUCTION MANUAL

01



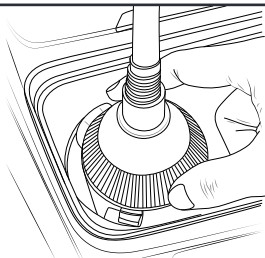
Click the phone holder onto the gooseneck. **NOTE:** you have connected correctly when you hear the "clicking sound."

02



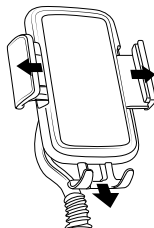
Put the base in your vehicle cup holder.

03



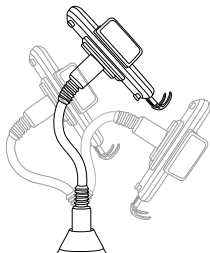
Twist the serrated cone-shaped dial on the base to fit the holder (clockwise to tighten, anticlockwise loosen).

04



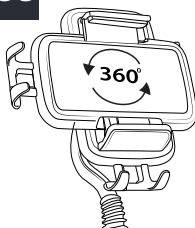
- Click the button on top behind the phone holder to open the clamps, and close them manually to grip your phone.
- Click the button below on the back to move the bottom support to adjust the position of your phone in the holder.

05



Adjust the flexible gooseneck or phone holder to the most optimum viewing position.

06



Done! Enjoy the comfort your new phone mount will bring!

Rotate the phone mount to the preferred viewing position (landscape vs portrait).