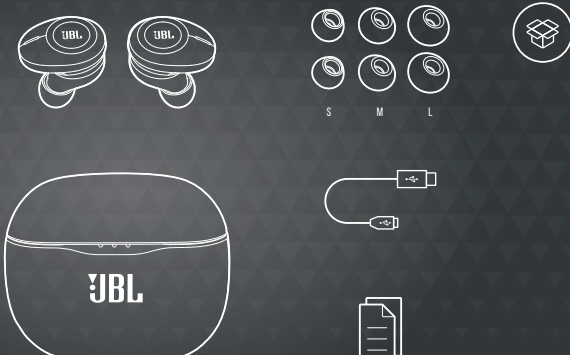


# QUICK START GUIDE

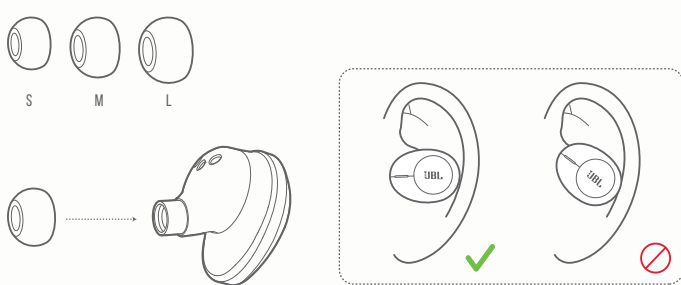
TUNE120TWS



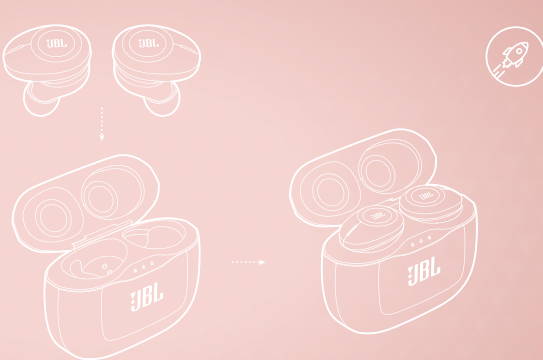
## WHAT'S IN THE BOX



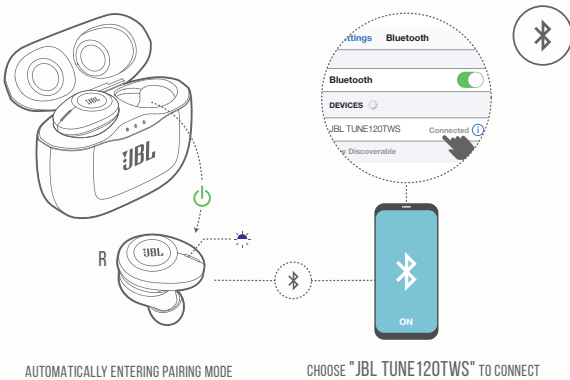
## HOW TO WEAR



## FIRST TIME USE



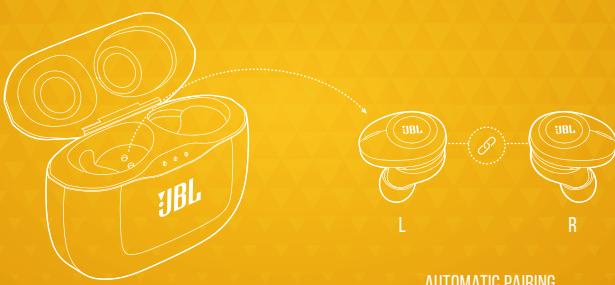
## POWER ON & CONNECT



AUTOMATICALLY ENTERING PAIRING MODE

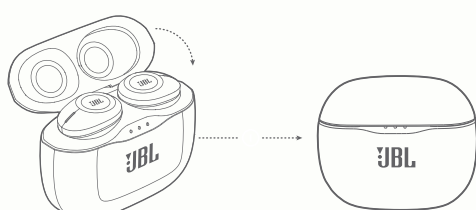
CHOOSE "JBL TUNE120TWS" TO CONNECT

## PAIRING



AUTOMATIC PAIRING

## POWER OFF

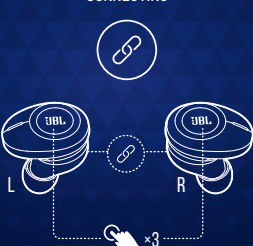


## MANUAL CONTROLS

POWER ON & CONNECT TO DEVICE



CONNECTING



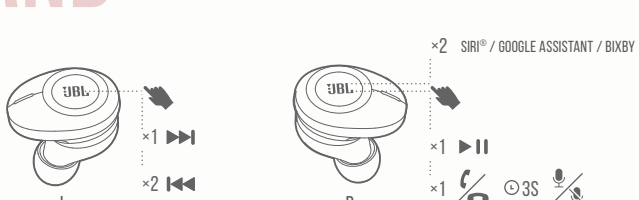
POWER ON



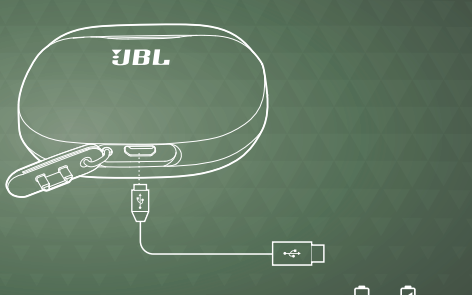
POWER OFF



## BUTTON COMMAND



## CHARGING



## LED BEHAVIORS



● ● ●	LOW BATTERY
○ ● ●	CHARGING
● ● ●	FULLY CHARGED

☀	POWER ON
☀	BT CONNECTING
●	BT CONNECTED
☀	LOW BATTERY
○	CHARGING
●	FULLY CHARGED

