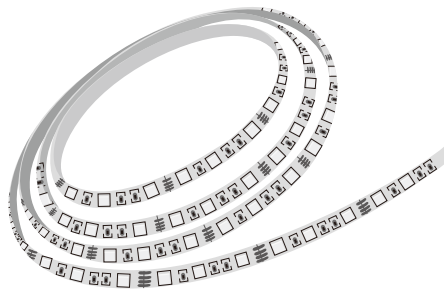


User Manual

Smart LED Strip Light



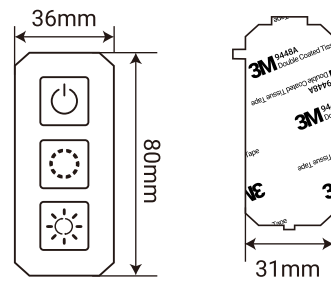
I Product Feature

1. Support WiFi 2.4GHz 802.11 b/g/n wireless network.
2. Support remote/ local control through 2G/ 3G/ 4G/ 5G networks.
3. Added device can be shared with family members.

II Product Parameter

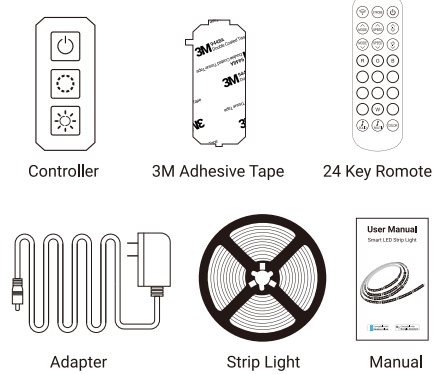
Voltage: DC 5-24V
 Max Current: 3A
 Max Power: 72W
 Product size: L80×W36×H12mm
 Humidity: ≤80% RH
 Working environment: Indoor
 Working temperature: -10℃-45℃ (14°F-113°F)

III Product Dimension

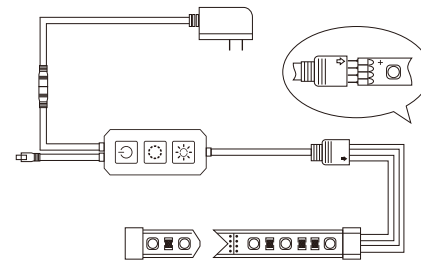


-1-

IIII What's in Package



V Installation Diagram



-2-

VI Add Device

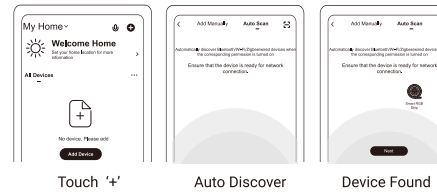
(1) Download Smart Life APP
 Search by name or scan the QR code below to download the App on your smart phone.



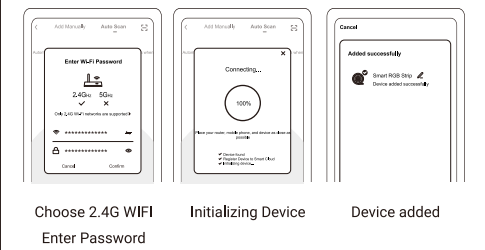
(2) Register with your mobile number or email. A verification code will be sent to you for confirmation.

(3) Add Device

- A. Turn on the strip light and open Smart Life App.
- B. Make sure GPS, WIFI and Bluetooth are enabled.
- C. Tap '+' on the right corner to start adding device.
- D. Searching nearby device automatically and wait for seconds.
- E. After device found, choose 2.4G Wi-Fi and input password as this will register the device to the cloud service.

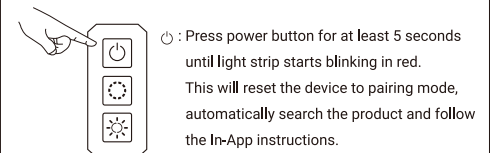


-3-



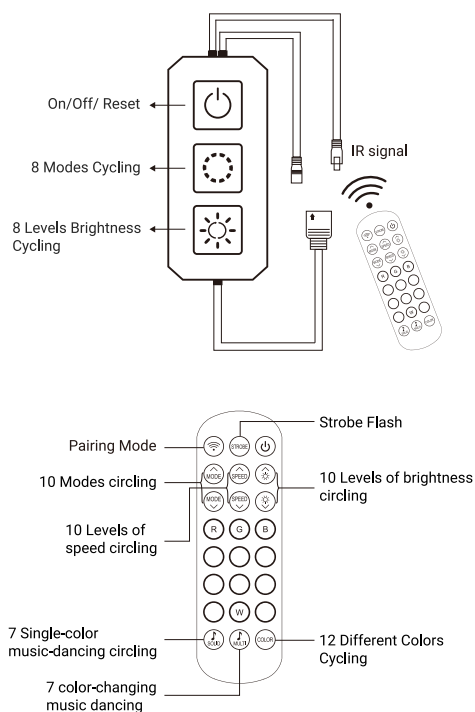
(4) How to reset the strip light?

- You need to reset the device in the following situations.
- A. When you can't connect the device to your App.
 - B. When someone else wants to add the product to their phone.
 - C. When you change your Wi-Fi status: such as changing Wi-Fi name or password or replace your router.



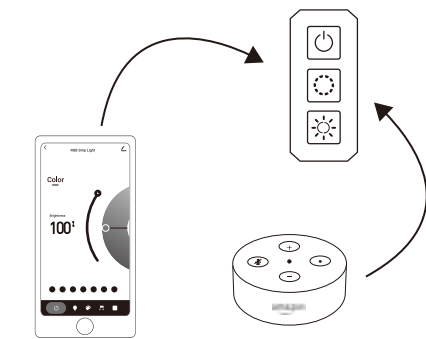
-4-

(4) Controller Box / Remote Control



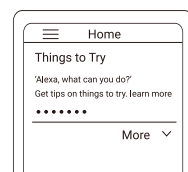
-5-

(5) APP Control / Voice Control



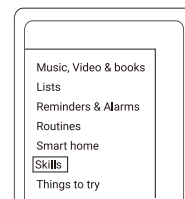
Link Smart Life Account to Echo

(1) Open Alexa APP, tap on the menu on upper left corner.

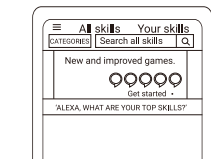


-6-

(2) Go to Skills



(3) Search for 'Smart Life' skill in the search bar.



(4) Tap on 'Smart Life' Skill

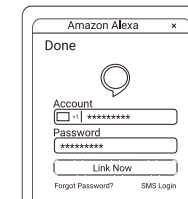


(5) Tap on 'Enable button'

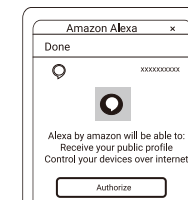


-7-

(6) Enter your Smart Life account information and tap on 'Link Now' to link your account to your Amazon account.



(7) Your Amazon Echo is connected to your Smart Life system. Click 'x' on the top right corner to close below page.



(8) Two ways to discover devices (Device Name)

- ① Discover devices on the Alexa APP: 'Home' → 'Smart Home' page, and then click 'Discover Devices'
- ② Voice control to discover devices, you could say 'Alexa discover devices'

-8-

Control Devices by Voice Commands

Now you can control your smart devices through Echo. Speak to Echo like following

- (1) Alexa, turn on/off strip light.
- (2) Alexa, set strip light to 50 percent.
- (3) Alexa, brighten/increase strip light.
- (4) Alexa, dim/decrease strip light.

Link Smart Life Account to Google Home

Make sure you have successfully set up Google Home. 1. Click '+' on the menu of Google Home App home page, then click 'Set up device'. Select 'Works with Google'.

2. Find 'Smart Life' in the list. Select your region, input your Smart Life account and password, then click 'Link Now'. After you assign rooms for devices, your devices will be listed in the Home Control page.

3. Control Your Smart Devices through Google Home
 Now you can control your smart devices through Google Home. Take bedroom light as the example, the supported voice commands are as below:

- OK Google, turn on/off bedroom light.
- OK Google, set bedroom light to 50 percent.
- OK Google, brighten bedroom light.
- OK Google, dim bedroom light.
- OK Google, set bedroom light to red.

-9-