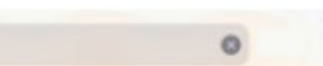


Download method

on App Store / Google Play
download and install.



ND
Photo & Video

OPEN

Shenzhen HND Pho... Photo & Video



use your mobile phone browser to
QR code to download and install

IOS

After scanning the code, open the IOS App Store to download and install. You can also search for HND to download and install in the App Store directly.

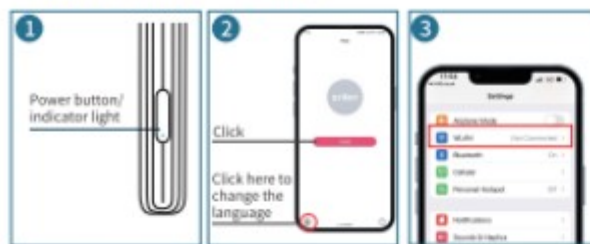
Android China

Android google play

IOS app store

There is a safety reminder during the
installation, choose to continue the installation

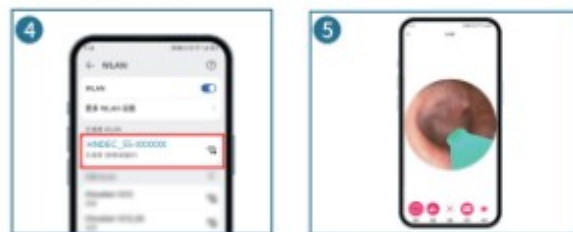
I . IOS system connecting



Holding down the power button for 2 seconds till the blue light flashing. It means the earpick is ready to connect with APP.

After click the APP icon, comes the above interface

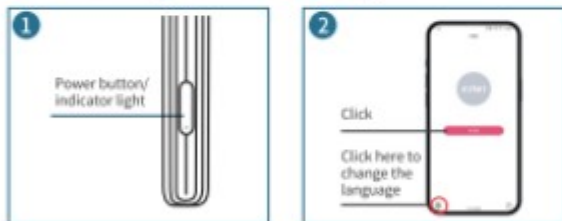
Select the "WLAN" option and let it on.



Select to connect
WIFI:HNDDEC_55-XXXXXX.

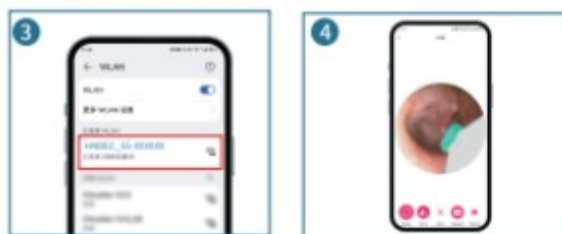
Return to the APP and start to use.
The blue light changes from flashing to keeping on, which means successful connection.

II . Android system connecting



Holding down the power button for 2 seconds till the blue light flashing. It means the earpick is ready to connect with APP.

After click the APP icon, comes the above interface



Select to connect
WIFI:HNDDEC_55-XXXXXX.

Return to the APP and start to use.
The blue light changes from flashing to keeping on, which means successful connection.

Product parameters

Product name	Wireless Visual Earpick
Network standard	IEEE 802.11b/g/n
Antenna	Built in antenna
working frequency	2.4Ghz
Transmission speed	30fps
Image transmitter	CMOS
working temperature	-10°C~50°C
Battery capacity	130mAh
Working time	35 minutes
Charging time	≈ 60Min
Input current	DC 5V/150mA
Lens inner diameter	3.6mm
Focal length	15mm~20mm
Picture quality	HD
Gravity sensor	3-Axis

Note

1. When the image is unclear, wipe the lens with a cotton swab.
2. Please use a professional alcohol swab to clean the lens carefully.
3. Please observe the surroundings before use. Prohibited to use it when someone is moving around to prevent accidents.
4. This product is not suitable for children under 5 years old.
5. It is prohibited for children to use it alone. Children must use it by Adult guided operation
6. Please keep the product out of reach of children.
7. Do not use the endoscope in liquid to avoid damage.
8. Lens heating is a normal phenomenon.
9. This product is only used as a personal care appliance. Can not be used as medical equipment.
10. Please place the product in a cool and dry place. keep away from fire and corrosive substances.

Charging instruc

1. Holding down the button shutdown before charging.
2. When charging, the red in light keeps on.
3. When fully charged, the red light will be off.

Troubleshoot

1. The screen is stuck.
 - A. The data transmission distance is too far. don't use the product too far from the phone.
 - B. The power is low. Please charge it before use.
 - C. There are too many WiFi signals around. Please fully charge it before use.
2. WiFi signal cannot be transmitted.
 - A. The lower the power, the weaker the signal. Please fully charge it before use.
 - B. Exceed the WiFi signal transmission distance. It is better to use the product near the mobile phone.
 - C. There are too many WiFi signals around. Please use it at a place with fewer WiFi signals.
3. No image display.
 - A. Confirm if the phone is connected to the product WiFi name.
 - B. The blue indication light keeps on. Turn off the APP and product. Open the APP again.