

User Manual

RED LIGHT HAIR CAP



Lifelab .
Longer Better Living

Company: Lifelab BV

✉ E-mail: info@lifelab.shop

📍 Address: Kerstraat 107a, 5411CK Zeeland, Netherlands

Red light hair cap is a hair loss treatment and hair growth equipment, it helps to weakened hair follicles, strengthen the growth of hair follicles, promote healthy hair growth, and stimulate hair regeneration. It also improves sleep, emotional well-being and memory.

Specifications

LED QTY	150 LED*0.5W
Default time	30 Minutes
Material	Fabric
Lifespan	Over 50,000 Hours
Net Weight	287g

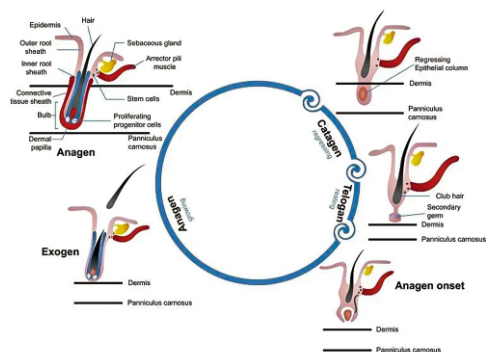
EMF	0 μ T(Safe)
Irradiance	0 inch>100mW/cm ²
Wavelength	1*660nm: 2*850nm
Product Size	L300" W200" H120mm
Charging way	USB recharge

Package including

1*User manual	1*Red light hair hat	1*USB cable(1m)	1*Box
---------------	----------------------	-----------------	-------

How it works for hair regrowth?

Low-level laser therapy also referred to as red light therapy and cold laser therapy-irradiates photons into scalp tissues. These photons are absorbed by weak cells to encourage hair growth. It's widely accepted that the procedure is safe, tolerable, and less invasive than hair transplant surgery.



Steps for using button controller



Frist Press, Turn ON, It is Level-1 brightness



Second Press, It is Level-2 brightness



Third Press, It is Level-3 brightness



Level-3 Brightness, Steady Lighting



Frist Press, Breathe Mode, LEDs' brightness gradient



Second Press, 10Hz Pulse Mode



Third Press, 40Hz Pulse Mode



Long press on this key to turn off the Cap

Usage frequency

Mild: once a day, moderate: 2 times a day, severe: 3 times a day.

Notes

1. To protect your eyes, do not look directly at the LED light.
2. This product is not suitable for children or pregnant women, and should not be used by individuals with skin sensitivities or those taking skin medications. If any discomfort occurs, please consult with a doctor for guidance.
3. When using the red light therapy cap, if your scalp feels too hot, adjust the gears to a mild level.
4. The LEDs are sewn and wrapped in SBR cloth. Do not soak in water or get wet when using, but keep it dry to prevent leakage danger.
5. When cleaning the cap, make sure it is not connected to any power supply, and disconnect the power input. Clean the fabric part of the cap slightly with a toothbrush rather than cleaning the LEDs directly.
6. Unplug the cap and store in a cool, dry place. Do not immerse the cap in water or wet place.
7. To ensure its longevity, avoid exposing it to direct sunlight or high temperatures.
8. One-year warranty from the date of purchase.