

390Eyes Smart Camera Product Manual



www.xiaoqiangiot.com

Scan the QR code above to download the "390Eyes" APP and complete the installation

Dear users, thank you for using the company's products, please read the operation manual carefully before using the company's products and save this manual for subsequent production examinations

YCLSMS306

390Eyes

1. Register and log in to the APP

- 1.1 Open the APP (as shown in Figure 1)
- 1.2 Click to register (as shown in Figure 2)
- 1.3 Follow the prompts to fill in the registration information (as shown in Figure 3) to complete the registration and log in to the APP (as shown in Figure 4)

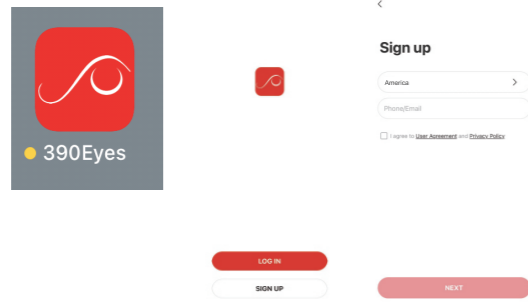


figure 1

figure 2

figure 3

2. Add a camera

Method 1: Scan the code to add

- 2.1 Click the "+" sign at the top right of the home page (as shown in Figure 4)
- 2.2 Click the scan button in the upper right corner (as shown in Figure 5)
- 2.3 Scan the "PID QR code" on the camera (as shown in Figure 6)
- 2.4 Follow-up steps to be added, please ask the production test APP to prompt

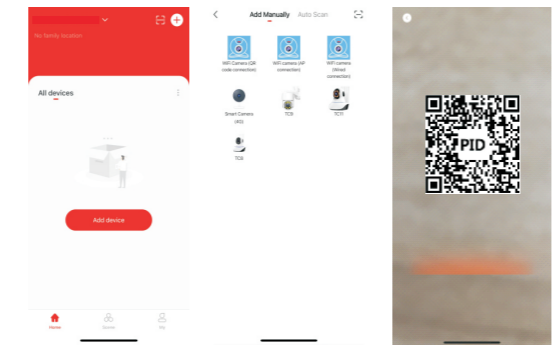


figure 4

figure 5

figure 6

Method 2: QR code distribution network

- 3.1 Click the "+" sign at the top right of the home page (as shown in Figure 7)
- 3.2 Click "WiFi camera QR code distribution network" (as shown in Figure 8)
- 3.3 Confirm that the above steps are completed and click "Next" (as shown in Figure 9)

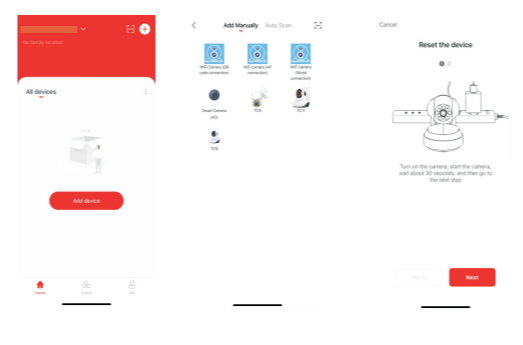


figure 7

figure 8

figure 9

- 3.4 Check "Confirm that the above steps have been completed" and click "Next" (as shown in Figure 10)
- 3.5 After entering the correct WiFi password, click "Next" (as shown in Figure 11)
- 3.6 Aim the camera lens at the QR code until the "wireless configuration is successful" beep is heard and click "Hear the beep" (as shown in Figure 12)

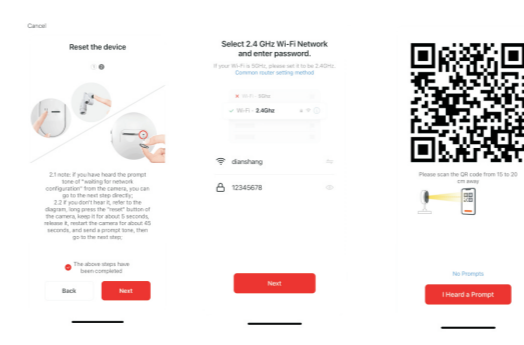


figure 10

figure 11

figure 12

- 3.7 Devices are being added (as shown in Figure 13)
- 3.8 After jumping out of the successful addition page, click the "Finish" button on the upper right to complete the addition (as shown in Figure 14)

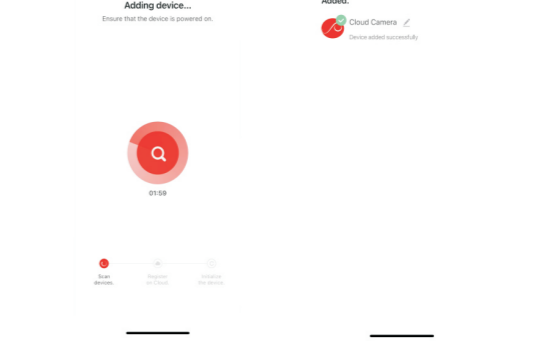


figure 13

figure 14

Method 3: Hotspot distribution network

- 4.1 Click the "+" sign at the top right of the home page (as shown in Figure 15)
- 4.2 Click on "WiFi camera hotspot distribution network" (as shown in Figure 16)
- 4.3 After entering the correct WiFi password, click "Next" (as shown in Figure 17)

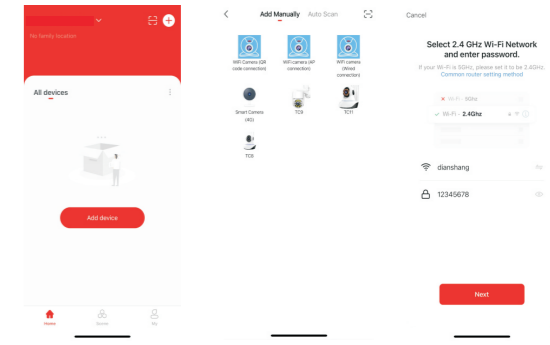


figure 15

figure 16

figure 17

- 4.4 Confirm that the above steps are completed and click "Next" (as shown in Figure 18)
- 4.5 Check "Confirm that the above steps have been completed" and click "Next" (Figure 19)
- 4.6 Click "Go to Connect" (as shown in Figure 20)

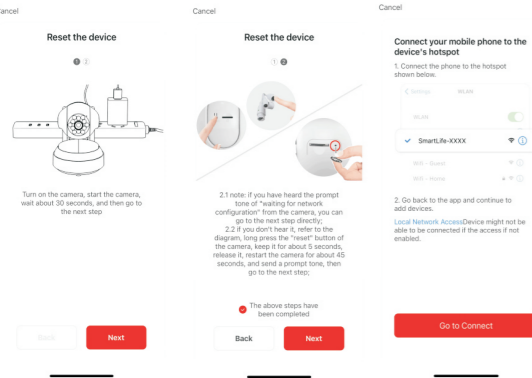


figure 18

figure 19

figure 20

- 4.7 Connect the mobile phone WiFi to the WiFi named "SmartLife" and return to the APP (as shown in Figure 21)
- 4.8 The device is being added (as shown in Figure 22)
- 4.9 After jumping out of the successful addition page, click the "Finish" button on the upper right to complete the addition (as shown in Figure 23)

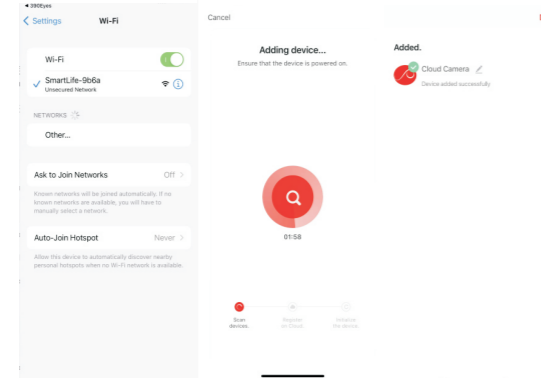


figure 21

figure 22

figure 23

Method 4: Wired addition (this method requires the camera to have a network port)

- 5.1 Click the "+" sign at the top right of the home page (as shown in Figure 24)
- 5.2 Click on the Wi-Fi camera's wired network port to configure the network (as shown in Figure 25)
- 5.3 Confirm that the above steps are completed and click "Next" (as shown in Figure 26)

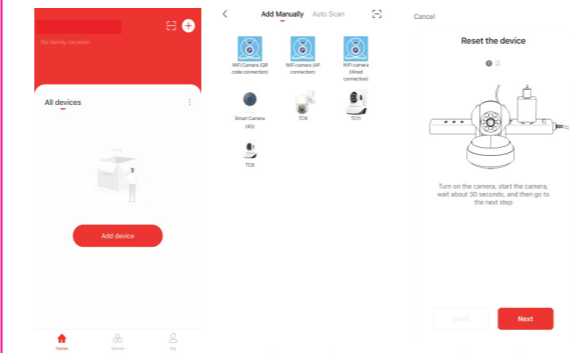


figure 24

figure 25

figure 26

- 5.4 Confirm that the above steps are completed and click "Next" (as shown in Figure 27)
- 5.5 Check "Confirm that the above steps have been completed" and click "Next" (as shown in Figure 28)
- 5.6 Device searching (as shown in Figure 29)

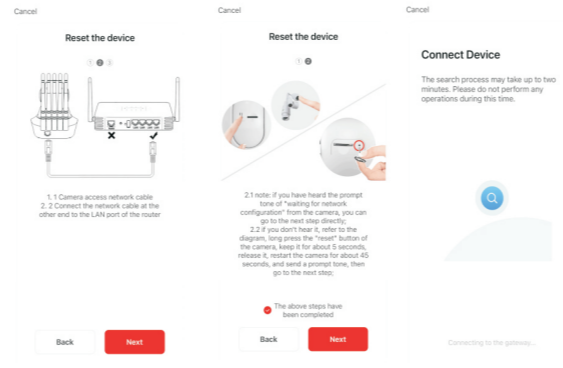


figure 27

figure 28

figure 29

- 5.7 After finding the camera, click the "+" sign on the right to add it (as shown in Figure 30)
- 5.8 The device is being added (as shown in Figure 31)
- 5.9 After jumping out of the successful addition page, click the "Finish" button on the upper right to complete the addition (as shown in Figure 32)

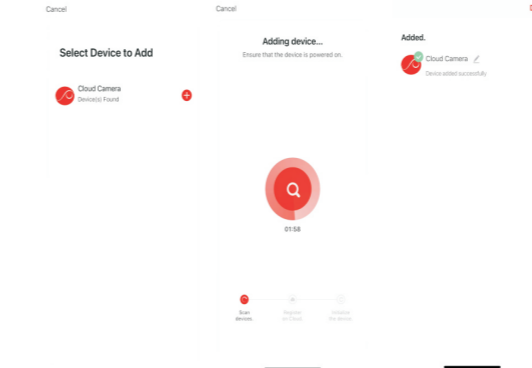


figure 30

figure 31

figure 32

FAQ

1. Can two mobile phones be connected to one camera at the same time? (A camera can only be added by one account, and multiple mobile phones can be viewed by sharing the device or logging in to the same account through multiple mobile phones)
2. Can I connect to the camera without WiFi? (No, the camera needs to be connected to WiFi network to use)
3. Check the playback prompt "SD card not detected"? (Check if the memory card is correctly inserted into the camera)
4. How to change the network connection? (Long press the camera reset button until the "reset successful" is issued to restart and then connect)
5. The camera prompts to be offline? (Check whether the WiFi network is normal, check whether the power supply is working properly)

warranty card

your name: _____

shoppingtime: _____

contact details: _____

cause of issue: _____

390Eyes