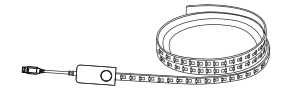




LED strip 5W RGB 3M Smart 02731



Features

- Bluetooth Connection
- Multicolor
- Flexible & Easy Install
- Remote Control (Need Gateway)
- Schedule (Need Gateway)
- Voice Control (Need Gateway)
- Group & Scenes
- Sync with Music
- Built-in Microphone

Set Up Your Smart Strip Light

Follow the steps below to set up your strip light via the Smart Life app.

Step 1. Download Smart Life App

Go to Google Play or the App Store or scan the QR code below to download and install the Smart Life app.



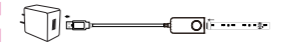
Step 2. Log In to Smart Life App

Open the app and use your account to log in. If you don't have a Smart Life account, tap Sign Up and the app will guide you through the rest.



Step 3. Connect Hardware

Connect all the parts. When connecting the strip light to the controller.

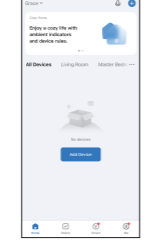


Button Explanations

- Control Button**
- Press once to enter into scene mode
 - Press twice to turn off your strip light
 - Press and hold for 5s, then release to restore factory settings

Add Your Devices (Method 1: Default Mode)

- Step 1. Discover Devices**
- Make sure your phone is connected to Wi-Fi & Bluetooth. Tap the **+** button in the app and follow app instructions to complete the setup.



Step 2. Power Up Strip Light

Plug in the power adapter and wait until the Strip Light blinks blue. The prompt page will automatically appear in the app. Press Add.

Note: Do not roll up when using. Spread out the Strip Light before connect the power supply.



Step 3. Devices being added

Select the device which you will add. Tap "+".



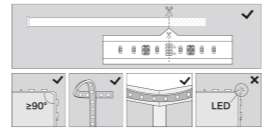
Step 4. Setup Complete

Now you can start using your Strip Light.



Install Your Smart Strip Light

After you have set up the Strip Light via the Smart Life app, you can cut it to length and attach it to any surface with the adhesive. To avoid damaging your Strip Light, please note the following Installation Tips before installing the Strip Light.



Cut Only On Specific Areas of Strip Light
You can custom tailor the length of your Strip Light with scissors. Unplug the Strip Light and cut only on these specific areas or your Strip Light will no longer function.

Avoid Sharp Turns
Carefully roll the Strip Light into a clover or use a gentle hill when making 90° turns like those need behind a TV. Sharp bends can damage your Strip Light.

Avoid Bending on LED Beads
The bend should be avoided just in the position of the LED components, so as not to damage the product and affect the life of the product.

Avoid Sharp Corners

Use gentle weeps when bending Strip Light around corners and avoid creases as they may cause damage.



Step 1. Choose Location

Choose a dry, clean, and smooth surface. Wipe off the dust. Otherwise, the Strip Light will be easily fall off. Note: Choose a location that avoids static and stays away from water splashing.



Step 2. Remove Adhesive Tape

Unplug the Strip Light first. Peel away the adhesive backing bit by bit and stick your Strip Light to the surface.



Step 3. Stick Strip Light

Stick the Strip Light and press over it about 10-15 seconds. Secure the controller with the adhesive pads. Do not move it to other place after it is attached.



Step 4. Power Up Strip Light

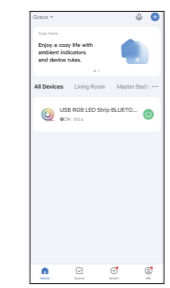
Plug in the power adapter to power on your Strip Light.

Main Device Control

After you successfully set up your Strip Light, you will see the Devices page on the Smart Life app. You can add new devices, control multiple devices simultaneously in a group, configure account settings, and more.

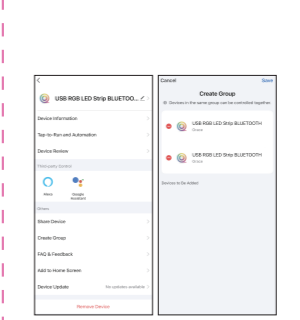
Device Page

On the Device page, you can instantly turn on/off the Strip Light.



Add a Group

Tap "+" and tap Create Group to add a group for controlling multiple devices simultaneously.



Configure Your Smart Strip Light

On the Devices page, tap a Strip Light and you can adjust the light brightness or color, set schedules, save a shortcut for a light effect, and configure the Strip Light settings.

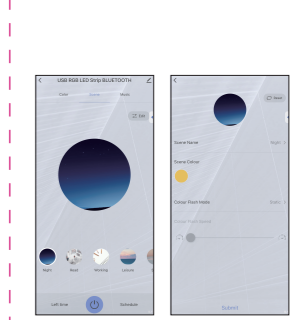
Adjust Color

Choose a preferred color for your Strip Light.



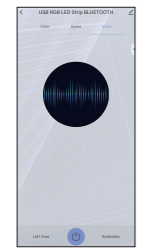
Scene Mode

Choose a preferred scene mode for your Strip Light. Press Edit to custom scene mode.



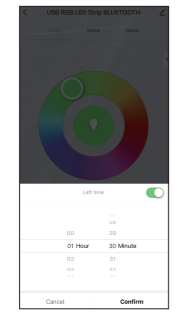
Sync with Music

Tap Music to match color changes with the beat of the music playing on your speakers. You can enjoy the "dancing" through your mobile microphone.



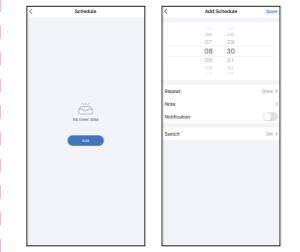
Left Time

Tap Left Time and select Left Time you can customize a countdown time to turn the light on or off automatically.



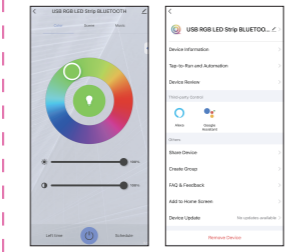
Add Schedules

Tap **Schedule** and select Schedule to simplify your daily routine by creating automatic On/Off actions. (You need connect a Bluetooth mesh Gateway to use this function)



Configure Device Setting

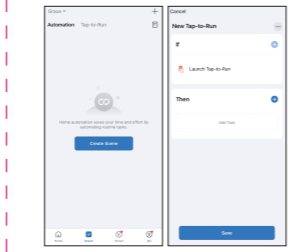
Tap **⚙️** to configure device settings and check device information.



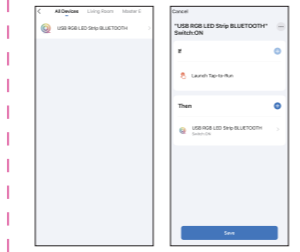
Create Scenes

A scene is a preset group of smart devices that can be customized and activated simultaneously at the touch of a button from your smartphone or tablet, allowing you to easily set your mood, activity or fit any special occasion.

- On the Scenes page, tap +.
- Tap Launch Tap-to-Run, then tap + to add task.

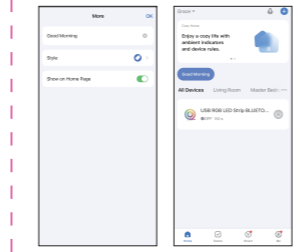


3. Tap the Strip Light and set what would you like it to do when the scene is run.



4. Tap **🎨** you can pick the style for your Strip Light, set a name for the scene.

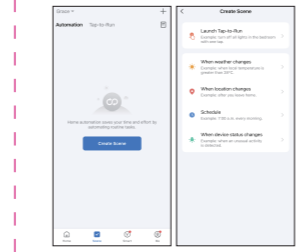
5. After created the new scene, tap the scene on the Home page to apply it.



Schedule A Scene

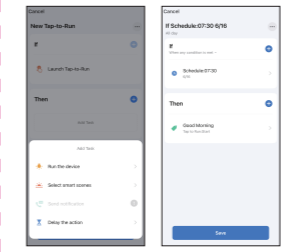
After you created a scene, you can schedule it to be applied automatically at the time specified. For example, if you want to automatically apply your scene "Good Morning" at 7:30 AM every weekday, follow the steps below.

- Go to Scene page and tap Create Scene.
- Select Schedule then set a time schedule for the scene.



3. Tap + and then add task, select select smart scenes.

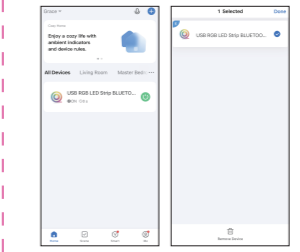
4. Tap **📅** give this schedule a name to help you remember.



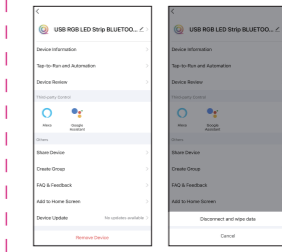
Factory Reset

Method 1: Press and hold the light switch controller for 5 seconds or more then release. The Strip Light blinking blue after that indicates a successfully factory reset.

Method 2: On the Device page on Smart Life app, touch and hold the device name, then select the device you want to delete and tap Remove Device.



OR
On the Home page on Smart Life app, tap "+" the Strip Light and tap > Remove Device.



Works with Alexa and Google Home

Use the Smart Life app to pair your Strip Light with Amazon Alexa, Google Home Assistant, and other third-party services to enjoy a full hands-free experience. (You need connect a Bluetooth mesh Gateway to use this function)

