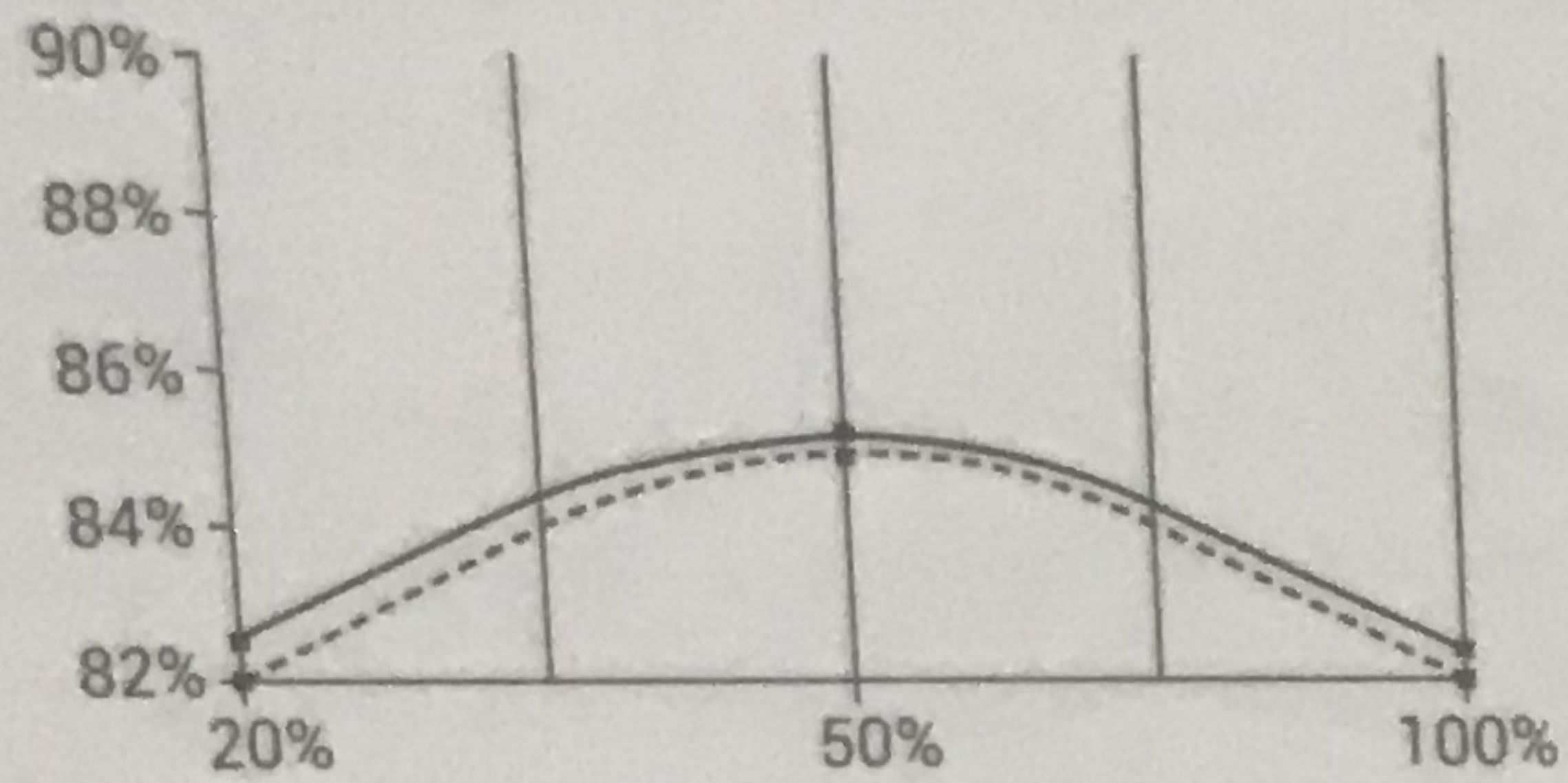


80 PLUS Standard White

Certified - Up to 82~85% efficient (20~100% Loading)

EFFICIENCY CURVE

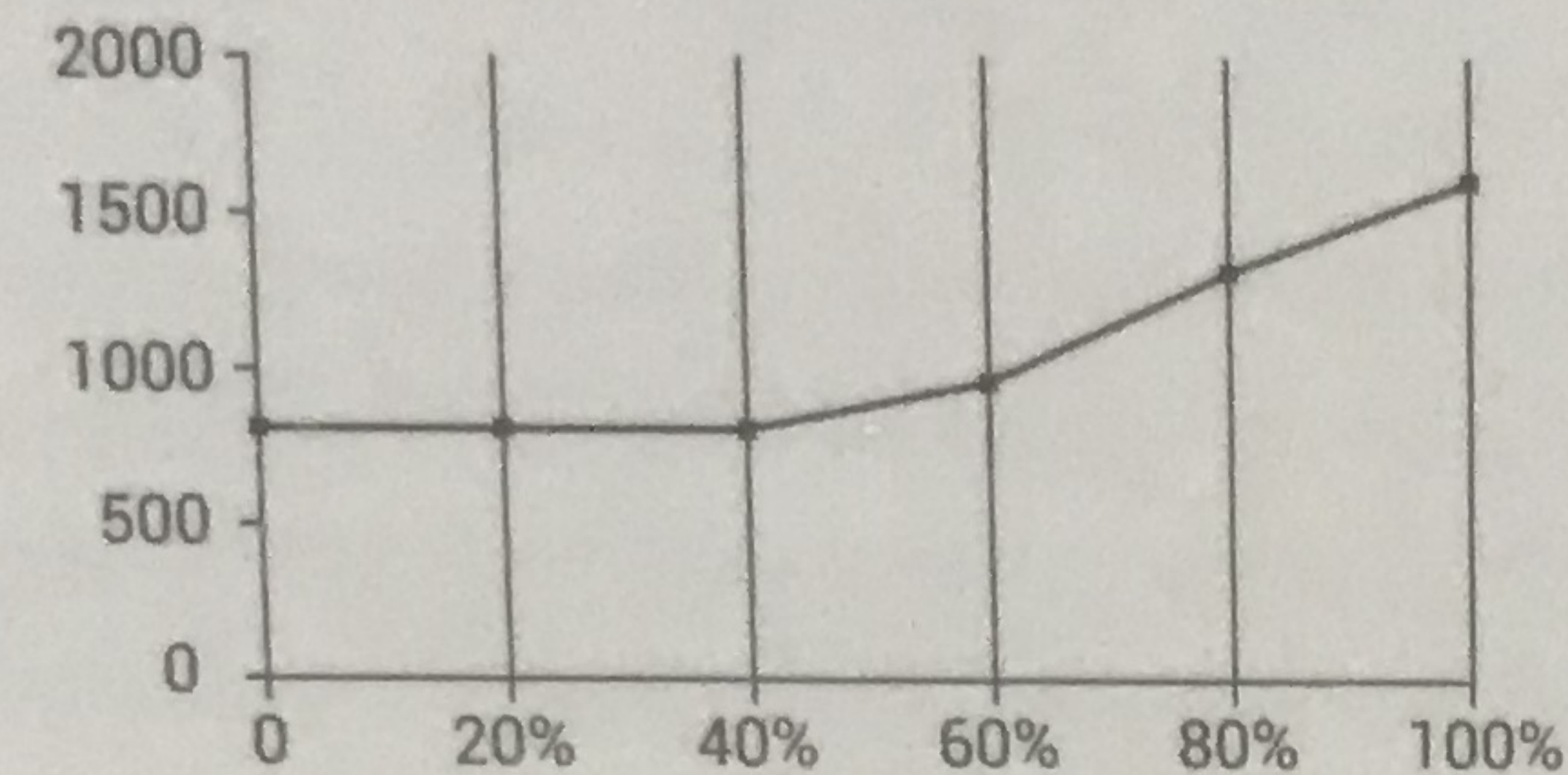


--- Standard White — 230V/50Hz

Silent and High Performance Fan

120mm silent fan has temperature control function to keep low noise

FAN SPEED

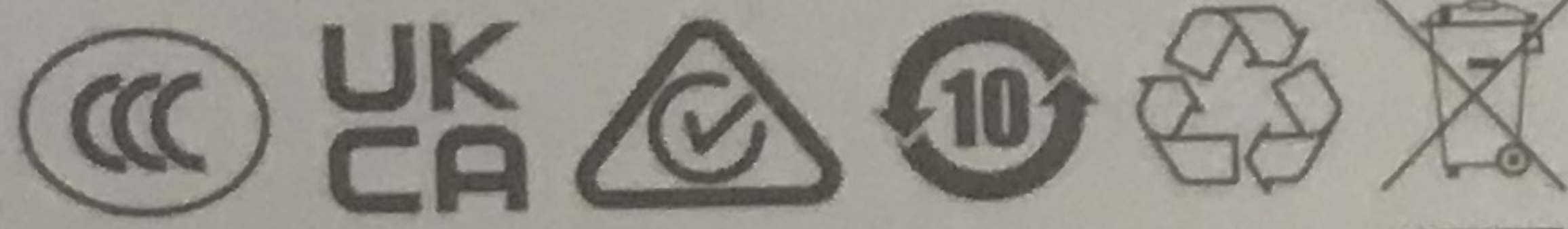
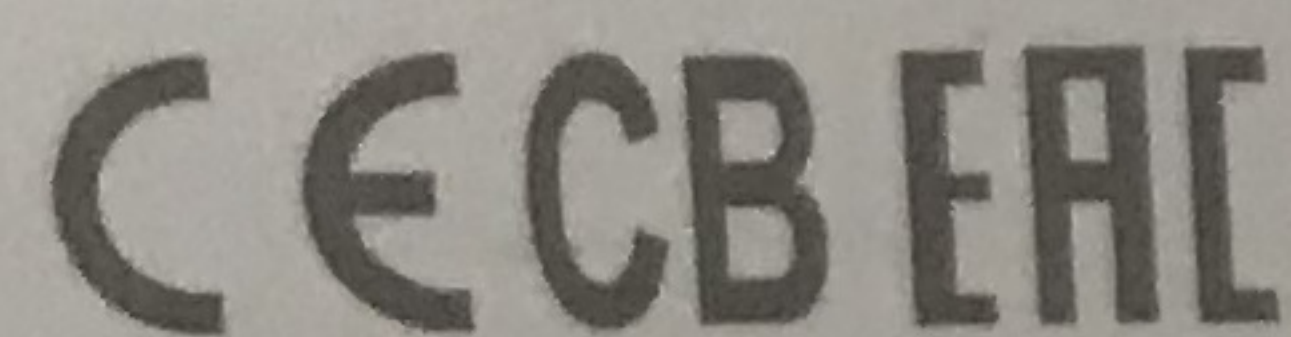


— FAN SPEED(RPM)

- EN For more information, please check our website at: www.deepcool.com
- DE Weitere Informationen erhalten Sie auf unserer Webseite: www.deepcool.com
- FR Pour plus d'informations, visitez notre site internet : www.deepcool.com
- ES Para más información, por favor,visite nuestra página en: www.deepcool.com
- RU Подробнее на www.deepcool.com
- KZ Көбірек ақпарат алу үшін біздің вебсайтымызға кіріңіз: www.deepcool.com
- PT Para mais informação, visita o nosso website em: www.deepcool.com
- IT Per ulteriori informazioni, visitate il nostro sito web: www.deepcool.com
- PL Aby uzyskać więcej informacji odwiedź naszą stronę www.deepcool.com
- JA 詳細については、以下URL先の公式WEBサイトをご確認ください www.deepcool.com
- KO 자세한 내용은 www.deepcool.com에서 확인하실 수 있습니다
- ZH 如需要更多信息, 請瀏覽網站www.deepcool.com
- ZH 如需要更多信息, 請瀏覽網站www.deepcool.com

DeepCool USA Inc.
11650 Mission Park Drive Suite 108., Rancho Cucamonga, CA 91730
Beijing DeepCool Industries Co., Ltd.
Building 10, No. 9 Dijin Road, Haidian District, Beijing 100095, China

© 2021 Beijing DeepCool Industries Co., Ltd. All rights reserved.
"DeepCool" and other commercial identities are legitimate registered trademarks and commercial identities of the trademarks owner and its affiliates in China and other countries or regions.
Pictures on this package are for reference only, please refer to the actual product.



IS-13252(PART1)/
IEC 60950-1
R-41211133
www.bis.gov.in

Model No.	PF600D-HA
Type	ATX12V V2.4
Product Dimensions	150×140×86mm (W x L x H)
80PLUS Certifications	230V EU White
Fan Size	120mm
Fan Bearing	Hypro Bearing
Topology	Active PFC+Double tube forward
Capacitors	Taiwan bulk capacitor
Power Good Signal	100-500ms
Hold Up Time	≥16ms(75% Load)
Efficiency	≥85% Under Typical Load(50% Loading)
Protection	OPP/OVP/SCP
Operation Temperature	0-30°C
Erp Regulation	ErP 2010
MTBF	100,000 Hours
Warranty	3 Years

AC Input	200-240Vac		4.5A	50Hz	
DC Output	+3.3V	+5V	+12V	-12V	+5Vsb
Max Output Current	15.0A	15.0A	48A	0.3A	2.5A
Max Combined Wattage	100W		576W	3.6W	12.5W
Total Output	600W				

Connector	Number of Cable	Cable Length
Main Power Connector (20+4Pin)×1	1	550mm
CPU(4+4)Pin x 2	1	610mm+150mm
PCI-E(6+2)Pin x 2	2	510mm+150mm
SATA x 3+4Pin Peripheral x 1	2	450+150+150+150mm

California Proposition 65 | Cancer and Reproductive Harm
WARNING | WWW.P65Warnings.ca.gov

10000015711BA224101481

Warranty void if removed

R-PF600D-HA0B-EU

6 933412 711391

MADE IN CHINA