



Slim Keyboard Bookcase

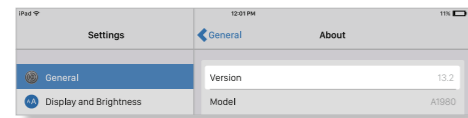
USER'S MANUAL

Compatibility

Compatible with iPadOS 13 (and newer). We recommend updating your iPadOS to the newest available version for best performance.

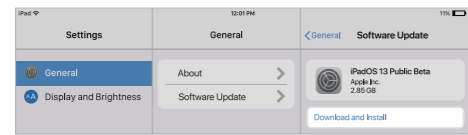
To check your iPad system version:

1. Go to Settings > General > About > Software Version.
2. Upgrade your iPadOS to the newest available version.



To upgrade your iPadOS to the latest version:

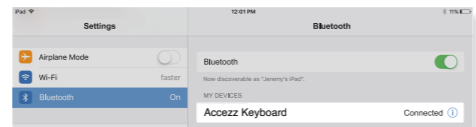
1. Open your device's Settings > General > Software Update.
 2. Tap Download and Install.
- If you see Resume Download, tap that instead.*



Set up

To pair with your iPad:

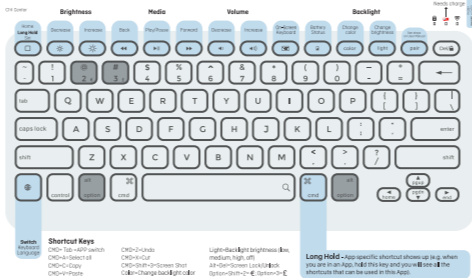
1. Switch ON/OFF switch to ON position.
2. Bluetooth indicator light will start blinking. If Bluetooth indicator light does not start blinking, press and hold the 'Pair' button for 3 seconds.



3. Tap 'Accezz Keyboard' under 'MY DEVICES' in the Bluetooth section of the Settings app.
4. Tap 'Pair' in the pop-up window like shown below.
5. Pairing process is considered complete after it says "Connected" in the Bluetooth app. The Bluetooth indicator light on the keyboard will stop flashing.

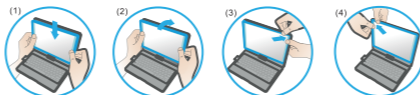
Shortcut map

Notice: Long Hold in any app to view available shortcuts.



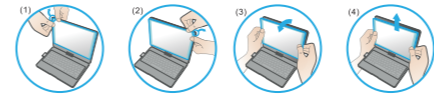
Installation and removal

Installation:



1. Align the lower edge of the iPad with the keyboard case.
2. Slightly push the iPad until all of the edges align.
3. Press the upper corner of the iPad with your fingers to put it in place.
4. Repeat pressing the remaining corners until iPad is held tightly inside the case

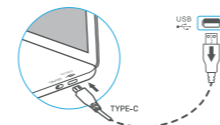
Removal



1. Hold iPad on both sides of the upper corner and use thumbs to gently push off the back cover. It's held in place by two tabs.
2. Repeat for the second upper corner.
3. Peel away the upper part completely.
4. Pull up to remove iPad from case.

Charging

1. Please charge the battery when the battery indication light on the keyboard is flashing.
2. Connect a wall charger to the USB-C charging cable and charge the keyboard. The battery indication light will turn red when charging and will turn blue when the charging is finished.



Rotation



Usage

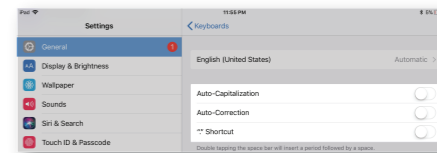


Troubleshooting

If the keyboard is not working correctly, please check if:

1. The bluetooth function on the iPad is enabled.
2. The bluetooth keyboard is within 10 meters distance.
3. The bluetooth keyboard is charged.
4. The bluetooth keyboard is powered on (battery indicator light should be on).
5. Press the "Pair" key and try again.

If you have an unwanted auto-correction or punctuation, please check the keyboard settings in the settings app.



If Bluetooth pairing fails, please try the following steps

1. Remove all bluetooth devices on your iPad.
2. Switch off the bluetooth function on your iPad.
3. Reboot your iPad.
4. Turn on the bluetooth function on your iPad.
5. Turn the keyboard off and on.
6. Repeat the steps to pair the keyboard as mentioned earlier in this manual.

Product specs

- Operating distance:** 10 meters (33 feet)
- Modulation system:** GFSK
- Working voltage:** 3.0-4.2V
- Working current:** 0.88-3.85mA
- Sleeping current:** < 125µA
- Charging current:** 500-800mA
- Continuous working time without backlight:** 60 hours
- Charging time:** < 2 hours
- Charging voltage:** 5V
- Key's life span:** > 5 million strokes
- Operating temperature:** -10 ± 55°C
- Maintenance:** Please preserve the keyboard under normal temperature and recharge under normal voltage.