

**CUSTOMER INFO**  
Minimum Point Size = 3.31pt

**RB Artwork and Print Specification**

Trident Reference No:	RB525947
ZEN Ref:	TR2535611
Action:	<b>F</b>
Brand:	Durex
Category:	Condoms
Segment Group:	Nude
Segment:	XL
Pack Size:	10 Pack
Market/Country:	BNL
Date:	09/09/2022

RBH Contact:	Valentine Chengsang
<b>Artwork Type: BW Commercial</b>	
Component Code (2D if applicable):	<b>50024141</b>
2nd Component Code (if applicable):	N/A
Parent Technical Packaging Specification:	TP150001323
Finished Goods Code:	<b>3234401</b>
Supply Point:	RB Thailand (Bangkok Factory)
3rd Party Code:	N/A
Pharmaco No/NE:	N/A
Edgemark Position:	N/A

CAD Cam Ref:	Du-Cn-TP150001323-3x7x12mm (Internal printing Thailand)
Printer:	TPN Packaging (Chachoengsao, Thailand)
Substrate:	Carton Board - Silver

Technical & Non Printing Items			
	Dieline		Dieline 2 (if applicable)
	Guides		Guides 2 (if applicable)

Colours			
Carton			
White	Process cyan	Process magenta	Process yellow
1	2	3	4
5	6	7	8
PANTONE 2317 C	PANTONE 2748 C	Varnish Satin	Varnish Gloss
9	10	11	12
13	14	15	16
Emboss	17	18	19
20	21	22	23
Reverse Print	24	25	26
PANTONE Refer. Book	PANTONE 299 C	27	28
29	30	31	32



Please note that any low resolution paper Canon colour copies associated with this job should be referred to for content, layout and colour separation only.

UNDER NO CIRCUMSTANCES SHOULD THIS ARTWORK BE ALTERED WITHOUT PRIOR PERMISSION FROM TRIDENT.

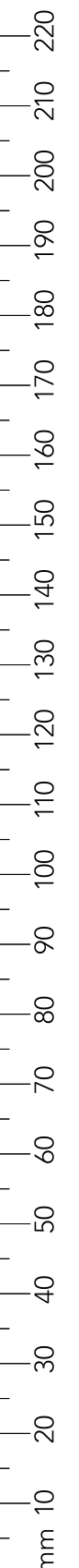
STUDIO USE ONLY    Atrison Navant    v2.0

**BARCODE INFO**

Barcode Type:	EAN 13
Code Value:	5410036306710
Magnification:	85 %
Overall Height:	22.12 mm
Bar Height:	19.5 mm
BWR Applied:	30 Micrometre

**BARCODE INFO**

Barcode Type:	2D Code
Code Value:	50024141
Magnification:	N/A %
Overall Height:	5 mm
Bar Height:	N/A mm
BWR Applied:	0 Micrometre





BARCODE INFO	
<b>Barcode Type:</b>	EAN 13
<b>Code Value:</b>	5410036306710
<b>Magnification:</b>	85 %
<b>Overall Height:</b>	22.12 mm
<b>Bar Height:</b>	19.5 mm
<b>BWR Applied:</b>	30 Micrometre

BARCODE INFO	
<b>Barcode Type:</b>	2D Code
<b>Code Value:</b>	50024141
<b>Magnification:</b>	N/A %
<b>Overall Height:</b>	5 mm
<b>Bar Height:</b>	N/A mm
<b>BWR Applied:</b>	0 Micrometre

### RB Artwork and Print Specification

Trident Reference No:	RB525947
ZEN Ref:	<b>TR2535611</b>
Action:	<b>F</b>
Brand:	Durex
Category:	Condoms
Segment Group:	Nude
Segment:	XL
Pack Size:	10 Pack
Market/Country:	BNL
Date:	09/09/2022

RBH Contact: Valentine Chengsavang

<b>Artwork Type:</b>	
Component Code (2D if applicable):	<b>50024141</b>
2 <sup>nd</sup> Component Code (if applicable):	<b>N/A</b>
Parent Technical Packaging Specification:	TPI50001323
Finished Goods Code:	<b>3234401</b>
Supply Point:	RB Thailand (Bangalung Factory)
3rd Party Code:	N/A
Pharmacode No/NE:	N/A
Edgemark Position:	N/A

CAD Cam Ref: Du-Cn-TP0000323-63x71x12mm (Internal printing Metals)  
 Printer: TPN Packaging (Chachoengsao, Thailand)  
 Substrate: Carton Board - Silver

Technical & Non Printing Items	
<input type="checkbox"/> Dieline	<input type="checkbox"/> Dieline 2 (if applicable)
<input type="checkbox"/> Guides	<input type="checkbox"/> Guides 2 (if applicable)

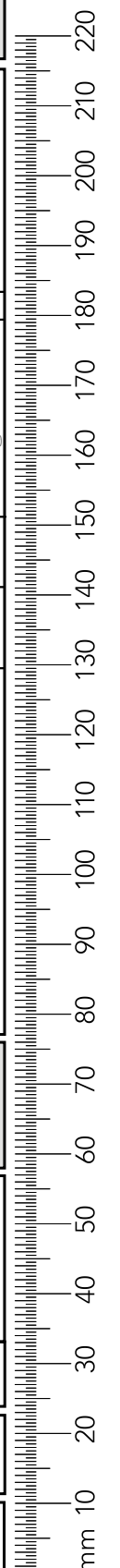
Colours			
Carton			
White	Process cyan	Process magenta	Process yellow
1	2	3	4
100%	100%	100%	100%
PANTONE 2317 C	PANTONE 2748 C	Varnish Satin	Varnish Gloss
5	6	7	8
100%	100%	100%	100%
Emboss:			
9			
100%			
Reverse Print			
PANTONE Refer Base 1	PANTONE 299 C		
11	12		
100%	100%		

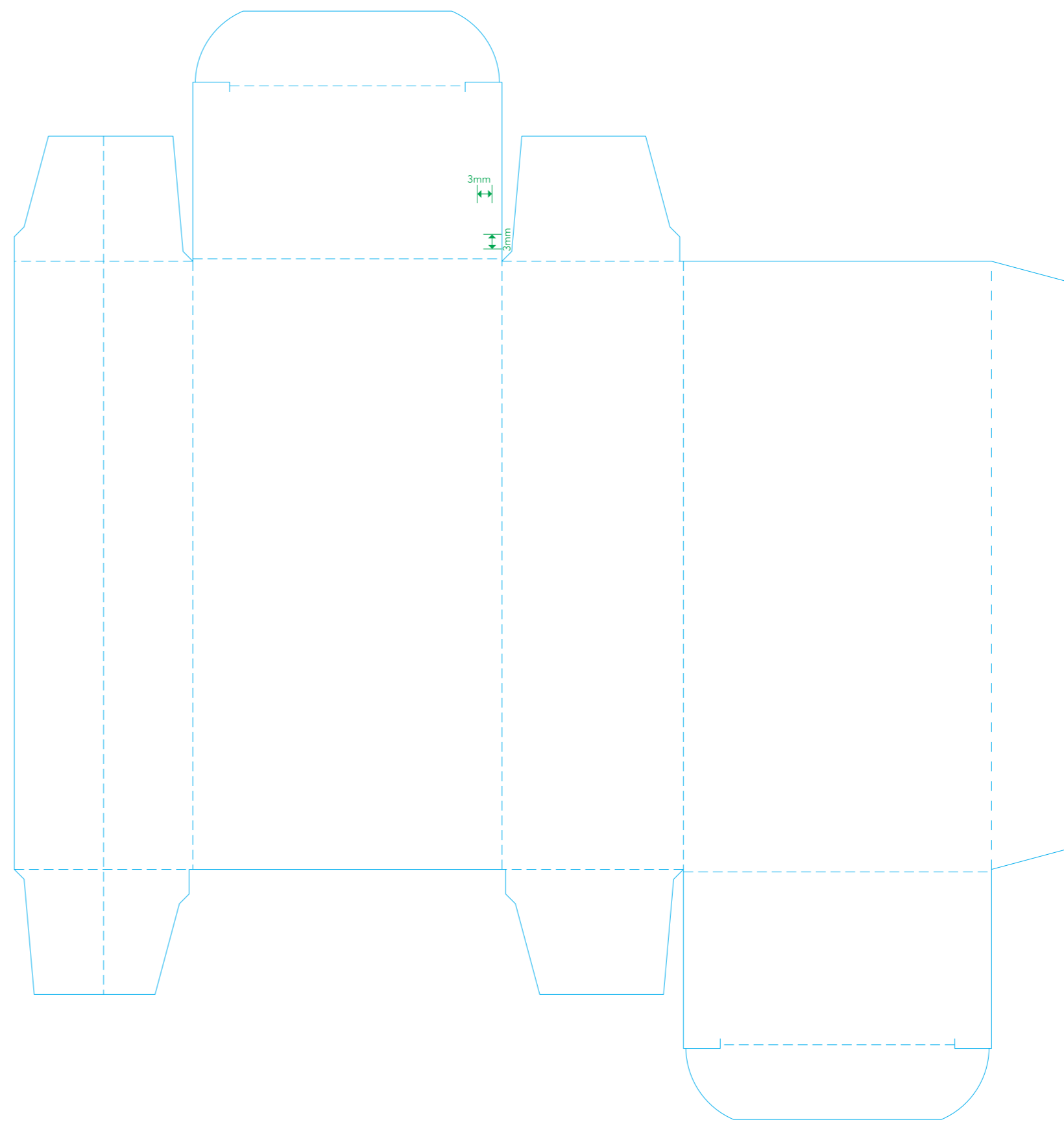
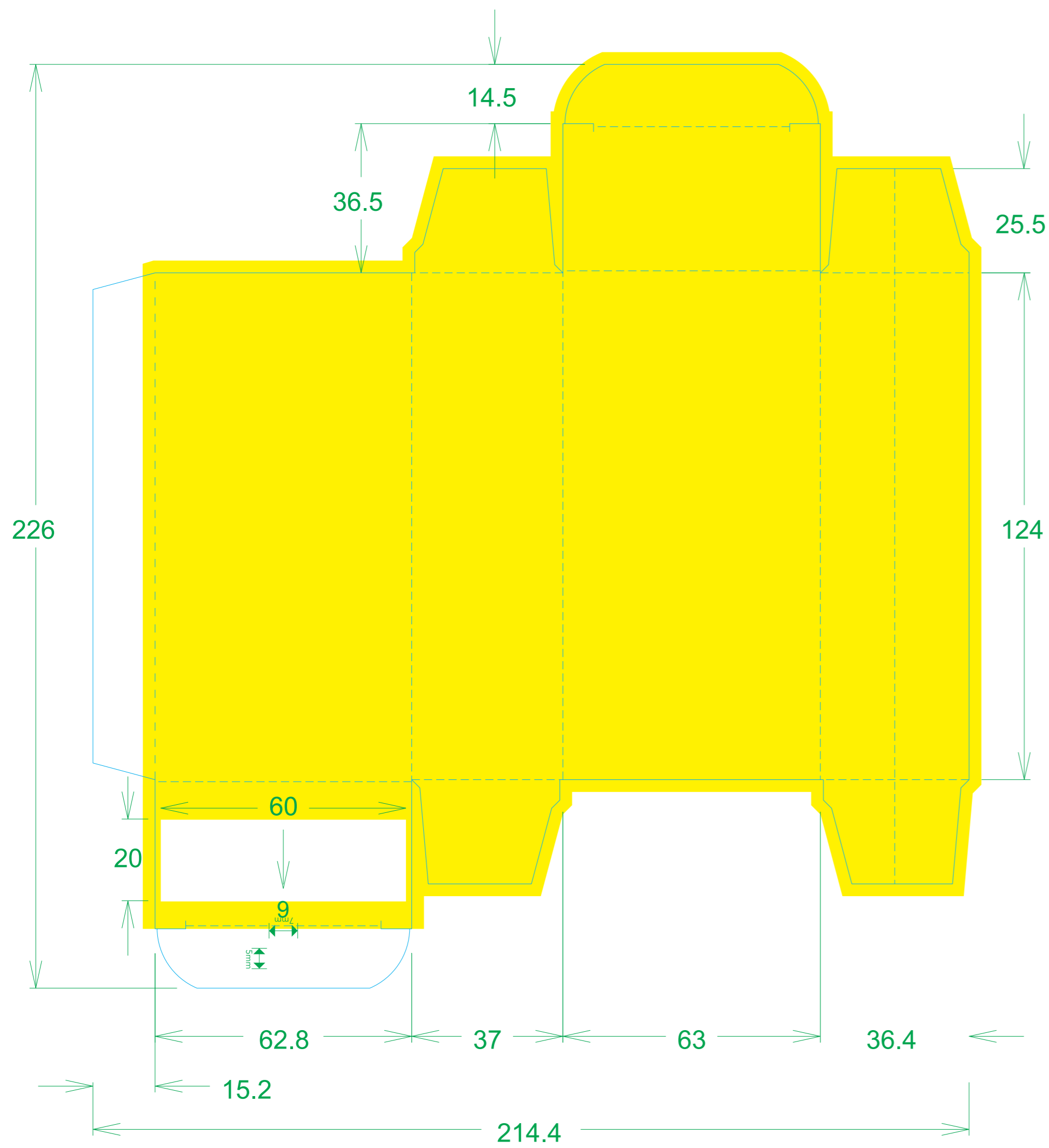


Please note that any low resolution paper Canon colour copies associated with this job should be referred to for content, layout and colour separation only.

UNDER NO CIRCUMSTANCES SHOULD THIS ARTWORK BE ALTERED WITHOUT PRIOR PERMISSION FROM TRIDENT.

STUDIO USE ONLY    Atrison Navanit    **v2.0**





### RB Artwork and Print Specification

Trident Reference No: RB525947  
 ZEN Ref: **TR2535611**  
 Action: **F**  
 Brand: Durex  
 Category: Condoms  
 Segment Group: Nude  
 Segment: XL  
 Pack Size: 10 Pack  
 Market/Country: BNL  
 Date: 09/09/2022

RBH Contact: Valentine Chengsavang

**Artwork Type: BW Commercial**  
 Component Code (2D if applicable): **50024141**  
 2<sup>nd</sup> Component Code (if applicable): **N/A**  
 Parent Technical Packaging Specification: TPI50001323  
 Finished Goods Code: **3234401**  
 Supply Point: RB Thailand (Bangkok Factory)  
 3rd Party Code: N/A  
 Pharmacode No/NE: N/A  
 Edgemark Position: N/A

CAD Cam Ref: Du-Cr-TR6000323-030124mm Internal printing Metals  
 Printer: TPN Packaging (Chachoengsao, Thailand)  
 Substrate: Carton Board - Silver

Technical & Non Printing Items  
 ■ Dieline ■ Dieline 2 (if applicable)  
 ■ Guides ■ Guides 2 (if applicable)

Colours  
Carton

White	Process cyan	Process magenta	Process yellow
1	2	3	4
100%	100%	100%	100%
PANTONE 2317 C	PANTONE 2748 C	Varnish Satin	Varnish Gloss
5	6	7	8
100%	100%	100%	100%
Emboss			
9			
100%			
Reverse Print	PANTONE 299 C		
10	11		
100%	100%		



Please note that any low resolution paper Canon colour copies associated with this job should be referred to for content, layout and colour separation only.

UNDER NO CIRCUMSTANCES SHOULD THIS ARTWORK BE ALTERED WITHOUT PRIOR PERMISSION FROM TRIDENT.

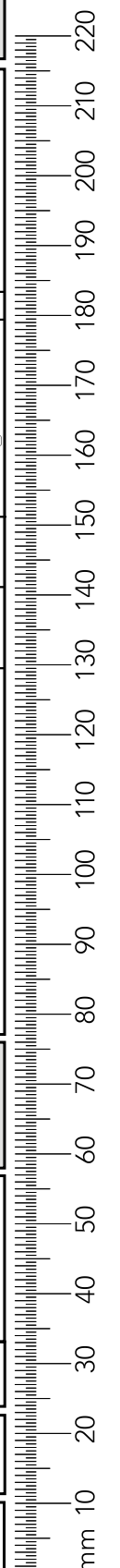
STUDIO USE ONLY Atrison Navanit v2.0

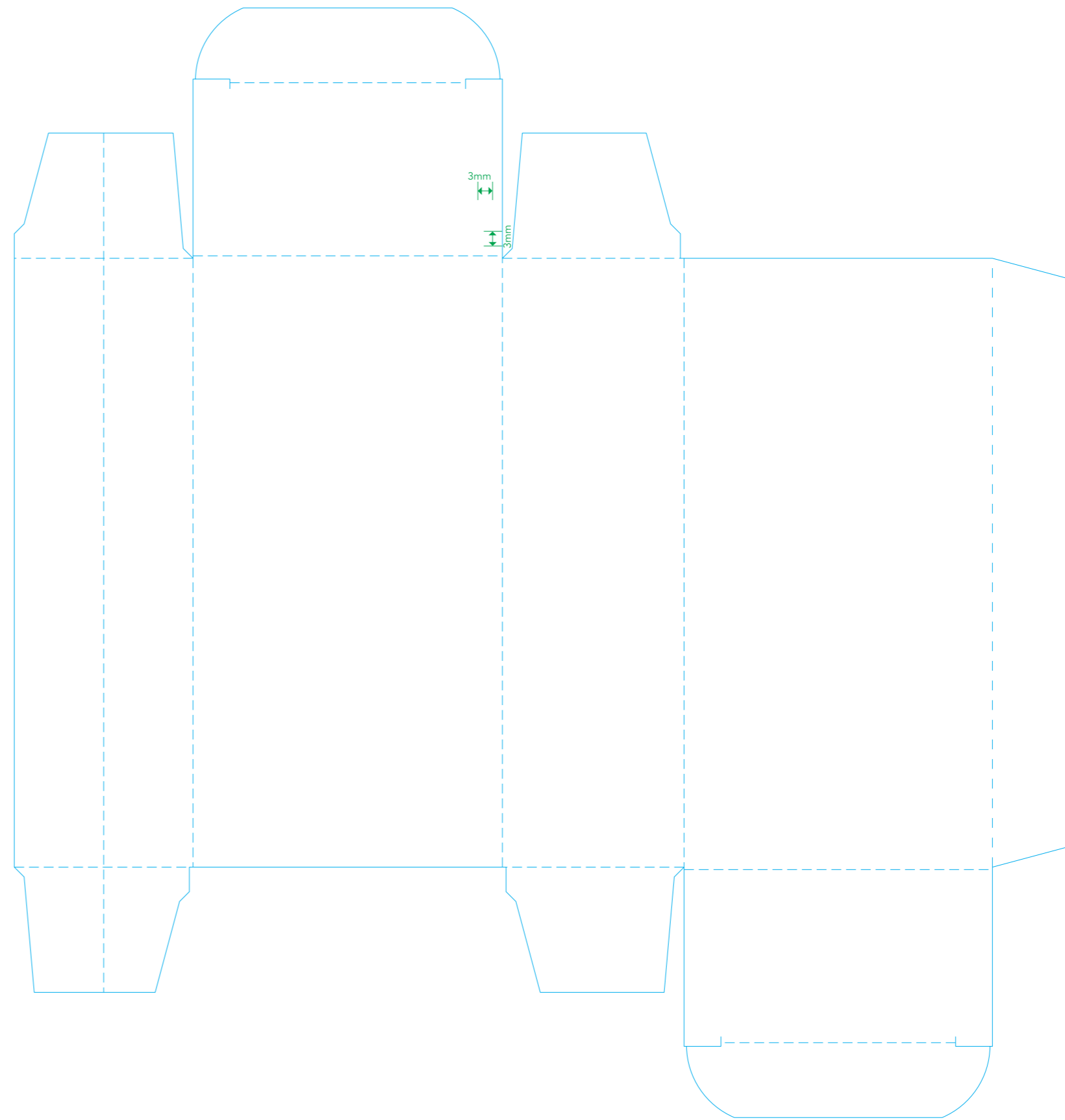
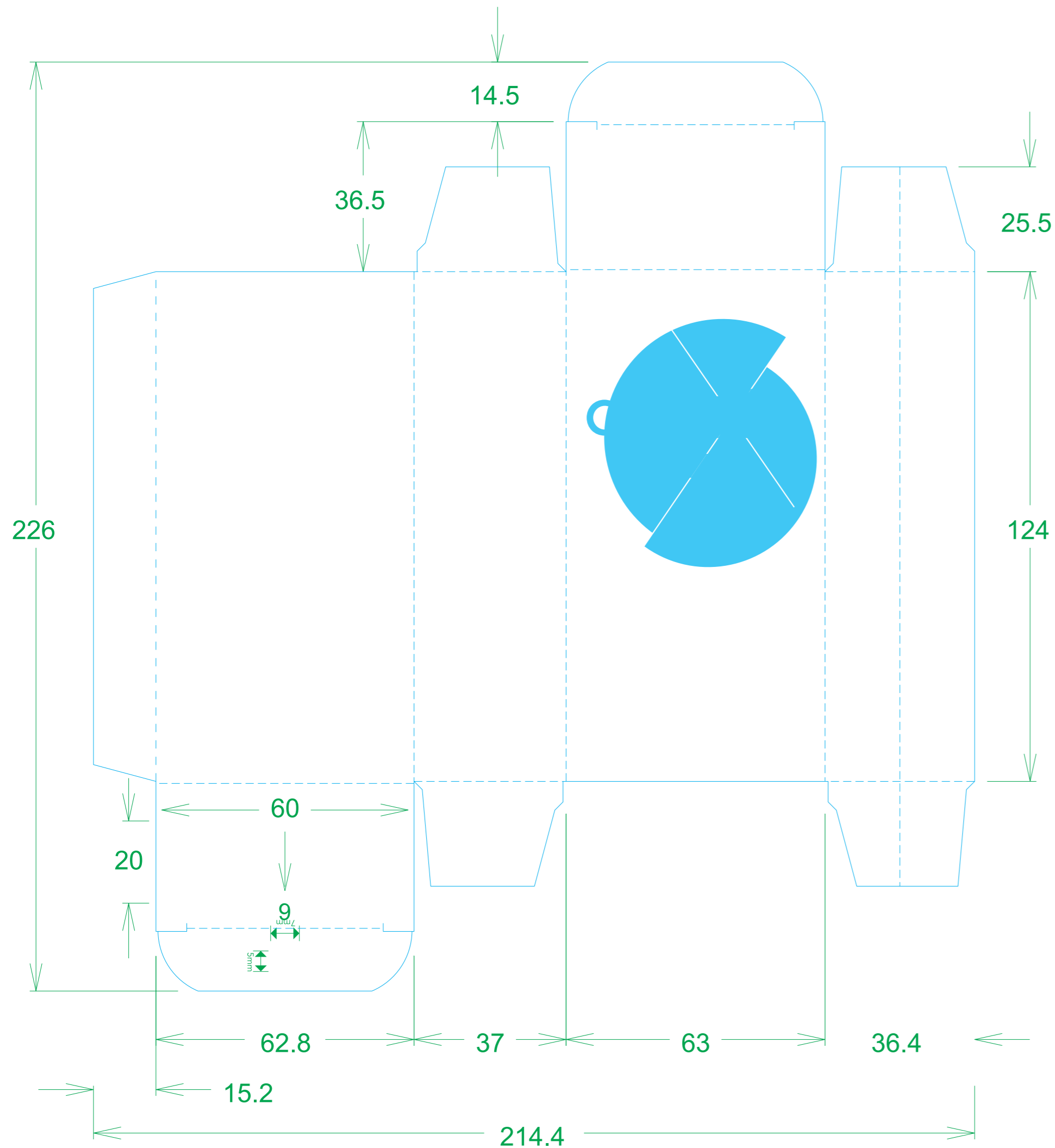
### BARCODE INFO

**Barcode Type:** EAN 13  
**Code Value:** 5410036306710  
**Magnification:** 85 %  
**Overall Height:** 22.12 mm  
**Bar Height:** 19.5 mm  
**BWR Applied:** 30 Micrometre

### BARCODE INFO

**Barcode Type:** 2D Code  
**Code Value:** 50024141  
**Magnification:** N/A %  
**Overall Height:** 5 mm  
**Bar Height:** N/A mm  
**BWR Applied:** 0 Micrometre





### RB Artwork and Print Specification

Trident Reference No: RB525947  
 ZEN Ref: TR2535611  
 Action: F  
 Brand: Durex  
 Category: Condoms  
 Segment Group: Nude  
 Segment: XL  
 Pack Size: 10 Pack  
 Market/Country: BNL  
 Date: 09/09/2022

RBH Contact: Valentine Chengsavang

#### Artwork Type: BW Commercial

Component Code (2D if applicable): 50024141  
 2<sup>nd</sup> Component Code (if applicable): N/A  
 Parent Technical Packaging Specification: TPI50001323  
 Finished Goods Code: 3234401  
 Supply Point: RB Thailand (Bangkok Factory)  
 3rd Party Code: N/A  
 Pharmacode No/NE: N/A  
 Edgemark Position: N/A

CAD Cam Ref: Du-Cr-TR6000-323-03-01-02mm Internal printing Metal  
 Printer: TPN Packaging (Chachoengsao, Thailand)  
 Substrate: Carton Board - Silver

Technical & Non Printing Items

- Dieline (Blue)
- Guides (Green)
- Dieline 2 (if applicable) (Purple)
- Guides 2 (if applicable) (Dark Green)

#### Colours Carton

White	Process cyan	Process magenta	Process yellow
1	2	3	4
100%	100%	100%	100%
PANTONE 2317 C	PANTONE 2748 C	Varnish Satin	Varnish Gloss
5	6	7	8
100%	100%	100%	100%
Emboss			
9			
100%			
Reverse Print	PANTONE 299 C		
100%	100%		



Please note that any low resolution paper Canon colour copies associated with this job should be referred to for content, layout and colour separation only.

UNDER NO CIRCUMSTANCES SHOULD THIS ARTWORK BE ALTERED WITHOUT PRIOR PERMISSION FROM TRIDENT.

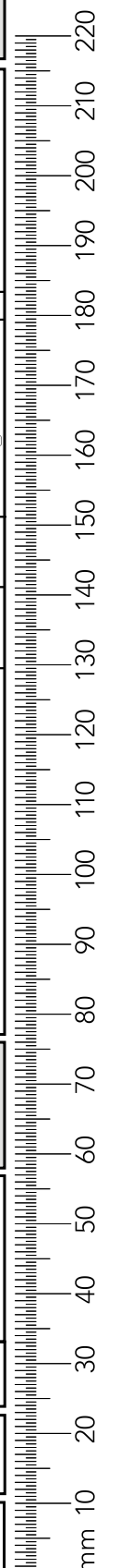
STUDIO USE ONLY Atrison Navanit v2.0

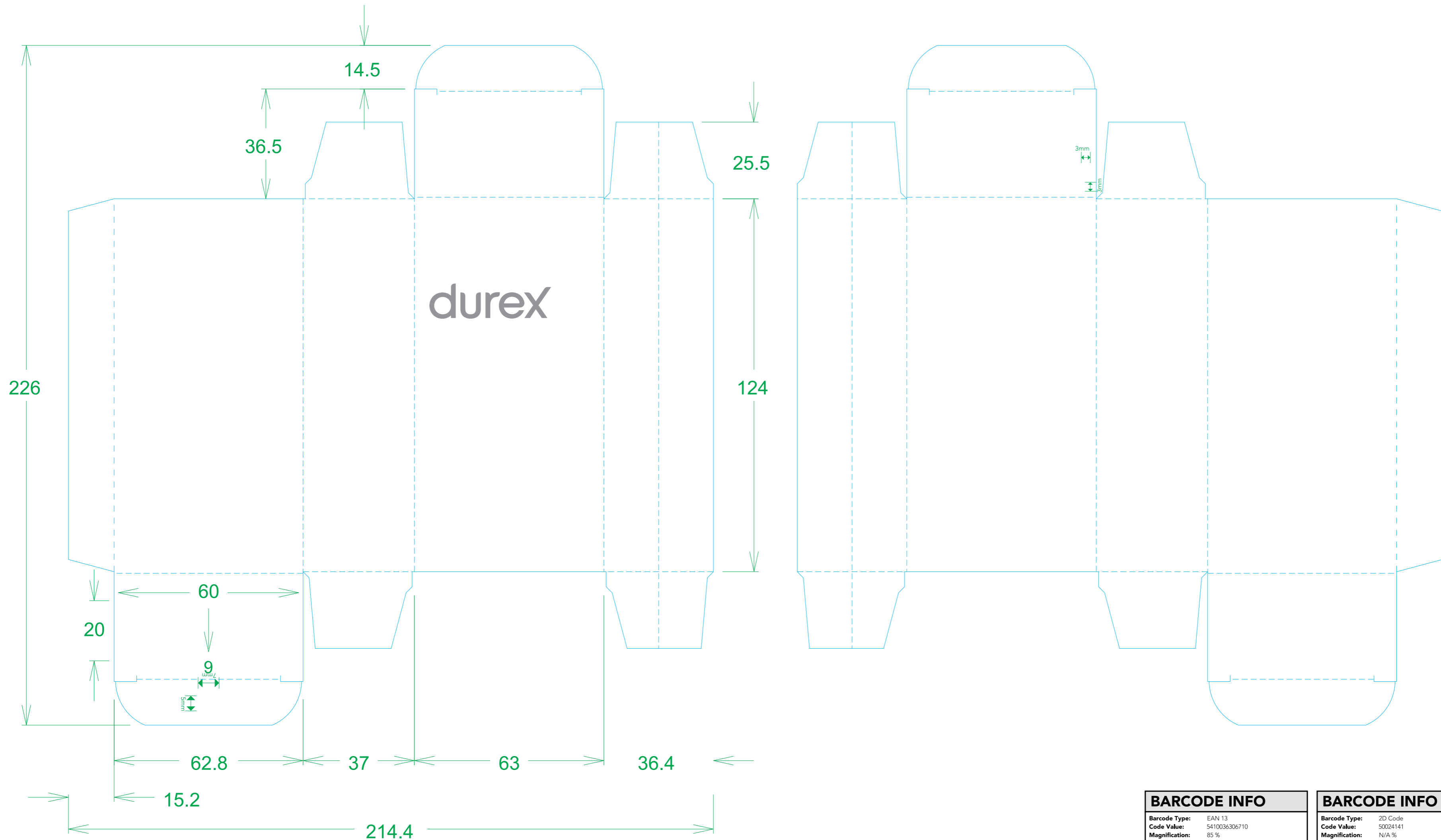
#### BARCODE INFO

Barcode Type: EAN 13  
 Code Value: 5410036306710  
 Magnification: 85 %  
 Overall Height: 22.12 mm  
 Bar Height: 19.5 mm  
 BWR Applied: 30 Micrometre

#### BARCODE INFO

Barcode Type: 2D Code  
 Code Value: 50024141  
 Magnification: N/A %  
 Overall Height: 5 mm  
 Bar Height: N/A mm  
 BWR Applied: 0 Micrometre





### RB Artwork and Print Specification

Trident Reference No: RB525947  
 ZEN Ref: **TR2535611**  
 Action: **F**  
 Brand: Durex  
 Category: Condoms  
 Segment Group: Nude  
 Segment: XL  
 Pack Size: 10 Pack  
 Market/Country: BNL  
 Date: 09/09/2022

RBH Contact: Valentine Chengsavang

**Artwork Type: BW Commercial**  
 Component Code (2D if applicable): **50024141**  
 2<sup>nd</sup> Component Code (if applicable): **N/A**  
 Parent Technical Packaging Specification: TPI50001323  
 Finished Goods Code: **3234401**  
 Supply Point: R8 Thailand (Bangkok Factory)  
 3rd Party Code: N/A  
 Pharmacode No/NE: N/A  
 Edgemark Position: N/A

CAD Cam Ref: Du-Cr-TR6000-323-03-01-02mm Internal printing Metal  
 Printer: TPN Packaging (Chachoengsao, Thailand)  
 Substrate: Carton Board - Silver

Technical & Non Printing Items  
 ■ Dieline ■ Dieline 2 (if applicable)  
 ■ Guides ■ Guides 2 (if applicable)

Colours  
 Carton

White	Process cyan	Process magenta	Process yellow
1	2	3	4
100%	100%	100%	100%
PANTONE 2317 C	PANTONE 2748 C	Varnish Satin	Varnish Gloss
5	6	7	8
100%	100%	100%	100%
Emboss			
9			
100%			
Reverse Print	PANTONE 299 C		
10	11		
100%	100%		



Please note that any low resolution paper Canon colour copies associated with this job should be referred to for content, layout and colour separation only.

UNDER NO CIRCUMSTANCES SHOULD THIS ARTWORK BE ALTERED WITHOUT PRIOR PERMISSION FROM TRIDENT.

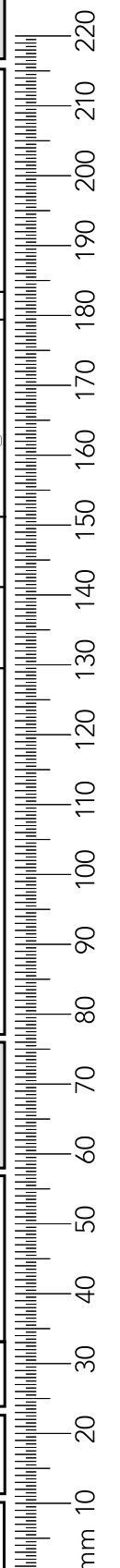
STUDIO USE ONLY Atrison Navanit v2.0

**BARCODE INFO**

Barcode Type:	EAN 13
Code Value:	5410036306710
Magnification:	85 %
Overall Height:	22.12 mm
Bar Height:	19.5 mm
BWR Applied:	30 Micrometre

**BARCODE INFO**

Barcode Type:	2D Code
Code Value:	50024141
Magnification:	N/A %
Overall Height:	5 mm
Bar Height:	N/A mm
BWR Applied:	0 Micrometre



Production line		
Manufacturing site		
Pack Tech approver	1st 2nd	
Date		
Check Criteria	Details & Comments	Checks
Approvals		1st 2nd
Market Approval		
Regulatory Approval		
3rd Party Approval		
Technical Drawing/ Cutter ref no. & PPI component code		
PPI component code number/s correct on artwork?		
PPI component code number/s in correct position on artwork?		
Correct drawing for the production line?		
Profile shape & dimensions		
Graphics layout/orientation		
Unwind diagram (PPTD1022/1-20)		
Printable areas/bleed		
Varnish free areas		
Variable coding position & dimensions		
Varnish and print requirements		
Pre-printed headers (alignment and suitability)		
Embossing, Braille & Foil Blocking		
Separations on artwork		
Alignment within cutter		
Braille structure		
Verification Code Type; Pharma Code / 2D / OCV		
Bar sequence and/or number correct on artwork		
Bar sequence and/or number in correct position on artwork?		
Size (height, width, spacing, font)		
Direction of read		
Light margins and print free areas		
Colour		
Repeat distance (reeled material)		
Cross check related docs ie BOM		
Bar code Type; EAN, ITF, Code39, etc		
Magnification / width and height		
Colour (e.g. black print on white background)		
Light margins & indicators		
Bearer bars & H gauges (if required)		
Symbol grade (Pass = A,B,C; Action = D,F)		
Bar code number (human readable)		
Bar code number (encoded & hidden data)		
Confirm bar code number from source		
Cross check related docs (JDE/PID)		
Photo-electric cell mark / edge marks		
Present & per Tech drawing?		
Correct pitch?		
Additional markings		
e-mark, recycle logo etc		
Legend box (RB specification)		
Correct component code		
Correct D spec / has cutter changed?		
Correct printer / has printer changed?		
Correct Substrate		
A/W is set up appropriately for this substrate		
Edge mark details		
Pharmacode details		
Colours & print process		
Varnish		
Barcode information		
General details are correct		
Pass / Fail comments and Signature		
By approving the artwork referenced within this form I authorise it for release to the print supplier		
Additional Comments		

## RB Artwork and Print Specification

Trident Reference No: RB525947  
 ZEN Ref: **TR2535611**  
 Action: **F**  
 Brand: Durex  
 Category: Condoms  
 Segment Group: Nude  
 Segment: XL  
 Pack Size: 10 Pack  
 Market/Country: BNL  
 Date: 09/09/2022

RBH Contact: Valentine Chengsavang

**Artwork Type: BW Commercial**  
 Component Code (2D if applicable): **50024141**  
 2<sup>nd</sup> Component Code (if applicable): **N/A**  
 Parent Technical Packaging Specification: TPI50001323  
 Finished Goods Code: **3234401**  
 Supply Point: RB Thailand (Bangkok Factory)  
 3rd Party Code: N/A  
 Pharmacode No/NE: N/A  
 Edgemark Position: N/A

CAD Cam Ref: Du-Cr-TP1000/323-63x124mm Internal printing Metal  
 Printer: TPN Packaging (Chachoengsao, Thailand)  
 Substrate: Carton Board - Silver

Technical & Non Printing Items  
 Dieline Dieline 2 (if applicable)  
 Guides Guides 2 (if applicable)

Colours  
Carton

White	Process cyan	Process magenta	Process yellow
1	2	3	4
100%	100%	100%	100%
PANTONE 2317 C	PANTONE 2748 C	Varnish Satin	Varnish Gloss
5	6	7	8
100%	100%	100%	100%
Emboss			
9			
100%			
Reverse Print	PANTONE 299 C		
11	12		
100%	100%		



Please note that any low resolution paper Canon colour copies associated with this job should be referred to for content, layout and colour separation only.

UNDER NO CIRCUMSTANCES SHOULD THIS ARTWORK BE ALTERED WITHOUT PRIOR PERMISSION FROM TRIDENT.

