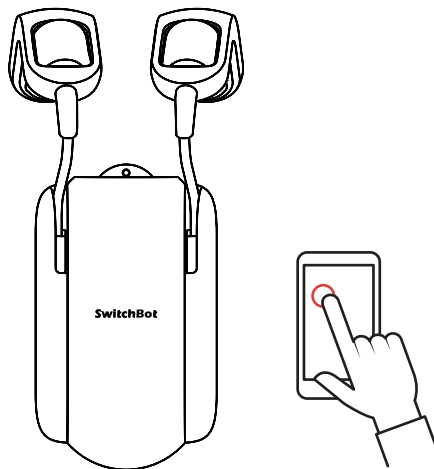


文件名称: Curtain R- SMS-EN-2112	设计师: ZBH	完成时间: 2021/12/21
版本号: V4.4-2112	成品尺寸: 83mm X 110mm	
材质和工艺: 封面 157g铜板 内页 128g铜版纸, 骑马钉		
更改内容: 增加锁扣配件, 修改部分安装示意图, 删减部分文案。		
备注: 此页从虚线下开始印刷, 表格不印刷、红色线框不做印刷		

SwitchBot Curtain Rod 2 User Manual



www.switch-bot.com

V4.4-2112

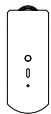
※ Please read this user manual carefully before using the device.

Contents

1. Package Contents -----	02
2. Name of Parts -----	03
3. Preparation -----	04
4. Installation -----	06
5. Control -----	23
6. Settings -----	26
7. Charging, Firmware and Factory Reset -----	27
8. Specifications -----	29
9. Return and Refund Policy -----	31
10. Contact and Support -----	31

Visit support.switch-bot.com for more support.

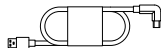
Package Contents



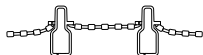
Main Body



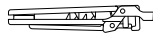
Hook Pair (Rod 2)



Type-C Cable

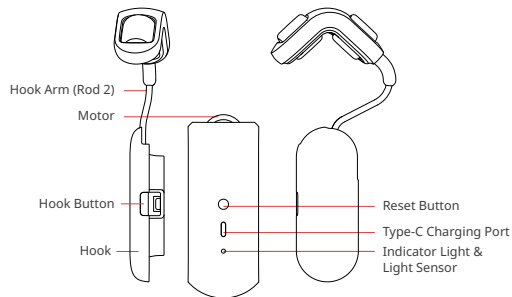


Beads Fixer (beads installed)



Clip

Name of Parts



Preparation

- A smartphone or tablet with Bluetooth 4.2 or above.
- Download the SwitchBot app on App Store or Google Play Store.
- Open the SwitchBot app and register for a SwitchBot account or sign in directly if you have an account.
- Fully charge your SwitchBot Curtain.
- (Optional) If you intend to use Cloud Services, you need to set up a SwitchBot Hub Mini (sold separately) and connect your phone to the internet.



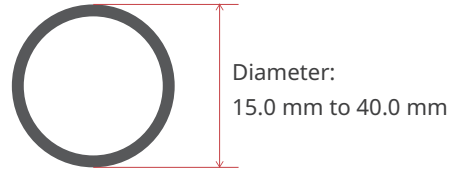
iOS 11.0+



Android 5.0+

Check your Curtain Track

SwitchBot Curtain Rod 2 supports curtain track with the following measurements:



If SwitchBot Curtain Rod 2 does not work on your curtain track, please contact:

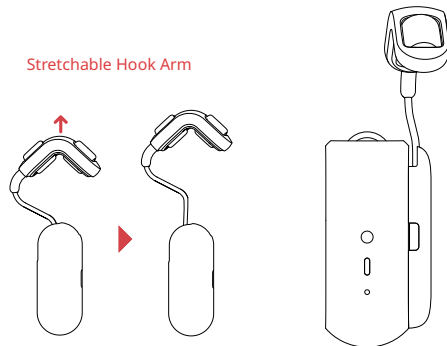
support@wondertechlabs.com

Installation

Step 1: Add SwitchBot Curtain in the App

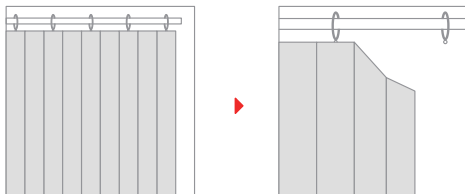
Create a SwitchBot account or sign in from the app's profile page. On the Home page, tap the top right + sign, select the Curtain logo and follow the instructions to add SwitchBot Curtain to your account.

Step 2: Install on your Curtain Track

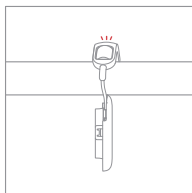


1. Ring Top Curtains

- ① Close your curtain and remove the first hook from it.

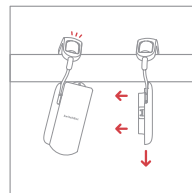


- ② Pull the detached Hook and attach it between the first and second ring onto your curtain rod.

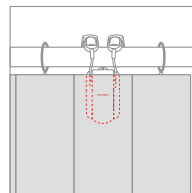


8

- ③ Put the main body (attached with the other Hook) onto the rod, pull down the Hook and install it on the main body, you will hear a click when it is firmly installed.



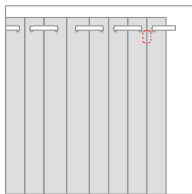
- ④ Finish by adjusting the position of the SwitchBot Curtain to keep it perpendicular to the ground, make sure the logo faces indoor. Put SwitchBot Curtain behind your curtain.



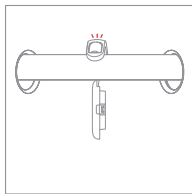
9

2. Grommet Curtains

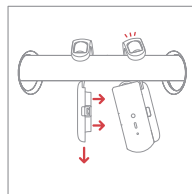
① Install SwitchBot Curtain at the back of your curtain.



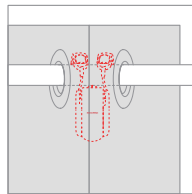
② Pull the detached Hook and attach it between the first and second grommet.



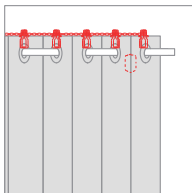
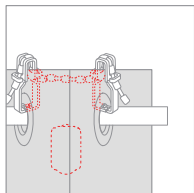
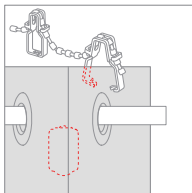
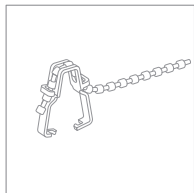
③ Put the main body (attached with the other Hook) onto the rod, pull down the Hook and install it on the main body, you will hear a click when it is firmly installed.



④ Adjust the position of the SwitchBot Curtain to keep it perpendicular to the ground, make sure the logo faces indoor.

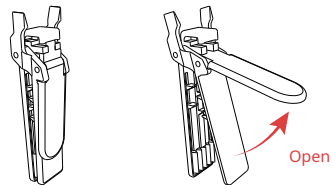


⑤ Refer to the pictures below, install the beads fixer at the top of the grommet (with beads installed in it), make sure that you clip it on the grommet firmly. Finish by cutting the remaining beads or put it behind your curtain.

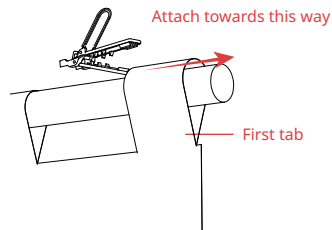


3. Tab Top Curtains

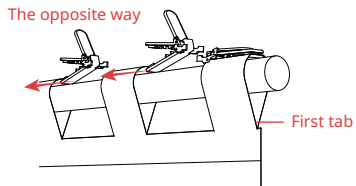
Install the clips provided according to the pictures below before you install SwitchBot Curtain.



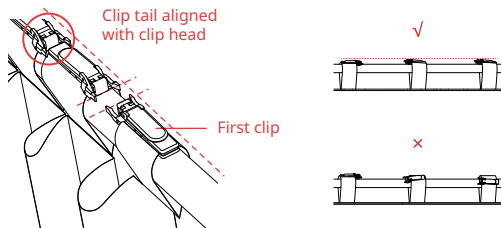
Close your curtain, attach a clip on the first tab.



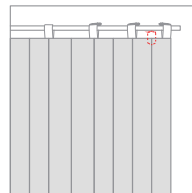
Attach the remaining clips on other tabs as shown on the picture.



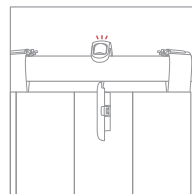
Beware that all other clips should be attached the opposite way against the first clip, make sure all the clips are sitting on the top of the rod and are aligned with each other.



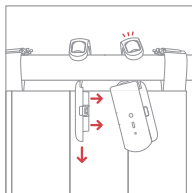
① Install SwitchBot Curtain at the back of your curtain.



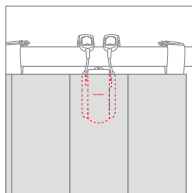
② Pull the detached Hook and attach it between the first and second tab onto your curtain rod.



- ③ Put the main body (attached with the other Hook) onto the rod, pull down the Hook and install it on the main body, you will hear a click when it is firmly installed.

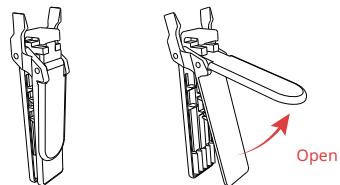


- ④ Finish by adjusting the position of the SwitchBot Curtain to keep it perpendicular to the ground, make sure the logo faces indoor.

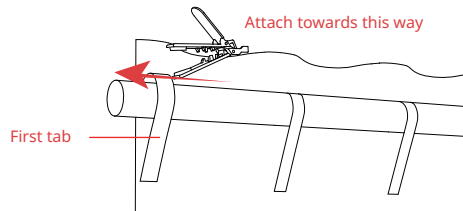


4. Back Tab Curtains

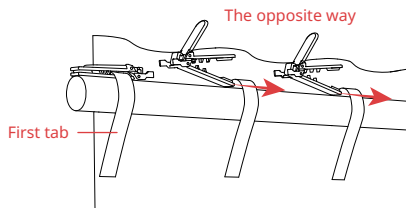
Install the clips provided according to the pictures below before you install SwitchBot Curtain.



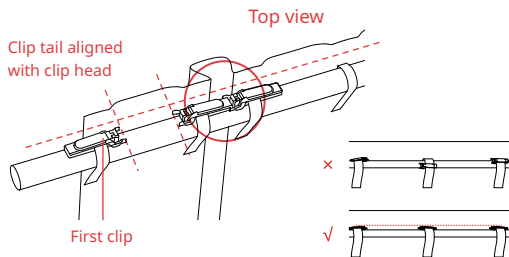
Close your curtain, attach a clip on the first tab.



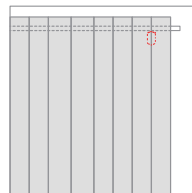
Attach the remaining clips on other tabs as shown on the picture.



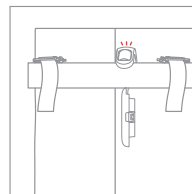
Beware that all other clips should be attached the opposite way against the first clip, make sure all the clips are sitting on the top of the rod and are aligned with each other.



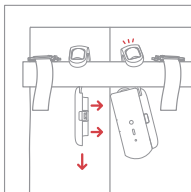
① Install SwitchBot Curtain at the back of your curtain.



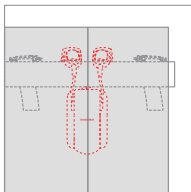
② Pull the detached Hook and attach it between the first and second tab onto your curtain rod.



- ③ Put the main body (attached with the other Hook) onto the rod, pull down the Hook and install it on the main body, you will hear a click when it is firmly installed.

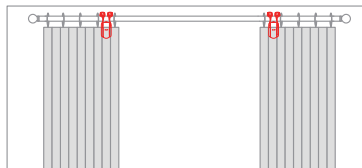
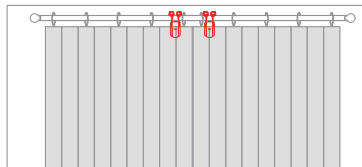


- ④ Finish by adjusting the position of the SwitchBot Curtain to keep it perpendicular to the ground, make sure the logo faces indoor.



How to Control Double Side Curtain

If you are using a double side curtain, we recommend you to use 2 SwitchBot Curtains to open it from the middle.



If you only purchased 1 SwitchBot Curtain, you may use the clips provided to join them and turn it into a single side curtain.

Note: Using a single SwitchBot Curtain may affect user experience.

Step 3: Calibration

After adding and installing SwitchBot Curtain, you need to calibrate it in order to fit your current curtain track. Please follow the app's guidance to calibrate to make sure that the actual movement of curtain and the video on the app are the same. You will need to recalibrate every time you change the Open Mode in the app, you can reset these settings on the Settings page anytime.

Note: You can group 2 SwitchBot Curtains and control them if you choose to open from the middle. Before you calibrate, please make sure that their positions are the same as stated on the app's picture.

Control

App Control

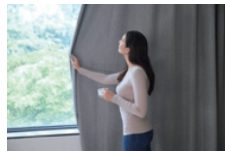


Open and close the curtain at your fingertips. We offer intuitive app control for iOS and Android, with weekly/bi-weekly updates following feedback from you.

OTA firmware update is also available for better user experience.

Touch & Go

When SwitchBot Curtain senses you drawing the curtain for more than 5 cm, it will kick in and do the work for you. You only need to pull one side of a double side curtain. You may turn off this function from advanced settings.



* 5 cm lowers the possibility of false trigger by your pets.

Voice Control and Home Automation*

You can link multiple third-party services from your SwitchBot account using voice commands or scenes.

You must meet the following requirements in order to achieve voice control and automation,

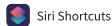
- Connect your smartphone or tablet to the internet
- Set up a SwitchBot Hub Mini (sold separately)
- Enable Cloud Services on Curtain's Settings page
- Link third-party services to your SwitchBot account

Alexa, close the curtain.

OK Google, close my bedroom curtain.

Hey Siri, open the living room curtain.

* Require SwitchBot Hub Mini (sold separately).



Control with SwitchBot Remote (sold separately)



A wireless remote add-on for you to place anywhere.

Control SwitchBot Curtain using a SwitchBot Remote. There are two buttons on SwitchBot Remote and you can set an action for each of them from the app, for example, fully open/fully close. One SwitchBot Remote can control 2 grouped SwitchBot Curtains. Please refer to its user manual for more information.

Settings

Light Sensing (Beta)

This allows you to set automations based on the illuminance level or the relative intensity of sunlight. It's still in the beta stage and is being upgraded continuously, please explore the details in the latest app release.

Delay

You can set up 1 Delay for countdown action. You can set the countdown time, percentage of opening or closing, and Motion Mode.

Schedule

You can set up 5 Schedules on board, or unlimited Schedules with a SwitchBot Hub. You can set the day, time, percentage of opening or closing, and Motion Mode.

Charging, Firmware and Factory Reset

Charging

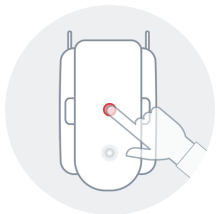
It takes about 6.5 hours¹ to fully charge the battery and it lasts 8 months after a full charge². You may also purchase our Solar Panel to charge by sunlight³.

1. 5V=1A adapter is required to charge the device.
2. Battery life is tested under conditions of runway of 3 meters, loaded with 8 kg of curtain, opened and closed twice a day under 25°C. Battery life may vary given different conditions.
3. When you wish to charge SwitchBot Curtain with Solar Panel, illuminance level 6 is required.

Firmware

Please upgrade in time for the most updated version.

Factory Reset



Hold the reset button for 15 seconds until the LED light lights up, then release the button. If you are using a double side curtain, you will need to redo the calibration on both SwitchBot Curtains.

Caution:

You may lose all the settings after factory reset and you may need to add the device again and redo calibration.

Specifications

Color: White / Black

Material: ABS plastic with UV-Resistant coating

Product Size: 42 x 51 x 110 mm (1.7 x 2 x 4.3 in)

Product Net Weight (Main Body): 135 g (4.8 oz)

Power: Type-C, DC 5V=1A, 3350 mAh lithium-ion battery or by Solar Panel¹

Battery Life: 8 months², or unlimited with Solar Panel

Connectivity: Bluetooth 5.0 Long Range

Sensor: Accelerometer, light sensor

Strength: Up to 8 kg / 17 pounds of curtain
(from controlled experiments in our lab)

Max Runway: 3 m (9.8 ft)

Schedule: Up to 5, or unlimited with a SwitchBot Hub Mini³

Voice Control (SwitchBot Hub Required): Amazon Alexa, Google Assistant, Siri Shortcuts, SmartThings, IFTTT, and LINE Clova

1. Solar Panel is sold separately.
2. Battery life is tested under conditions of runway of 3 meters, loaded with 8 kg of curtain, opened and closed twice a day under 25 °C. Battery life may vary given different conditions.
3. SwitchBot Hub Plus/Mini is sold separately.

Note: Use under regular temperature only.

Return and Refund Policy

This product has a one-year warranty which begins from the date of purchase. The situations below do not fit the Return and Refund Policy.

- Intended damage or abuse.
- Inappropriate storage (drop down or soaking in water).
- Modify or repair of product.
- Natural wearing of product.
- Natural disasters.

The batteries are not in the warranty.

Contact and Support

Setup and Troubleshooting: support.switch-bot.com

Support Email: support@wondertechlabs.com

Feedback: If you have any concerns or problems when using our products, please kindly send feedback from the Profile > Feedback page in the SwitchBot app.

CE Warning

Manufacturer's Name: Woan Technology (Shenzhen) Co., Ltd.

Manufacturer's Address: Room 1101, Qiancheng Commercial Center, No. 5 Haicheng Road, Mabu Community, Xixiang Sub-district, Bao'an District, Shenzhen, Guangdong, P.R.China, 518100

Product Name: SwitchBot Curtain

Model Number: W0701600

Operating Temperature: -20 ° C to 60 ° C

This device was tested for fixed location operations. To comply with RF exposure requirements, a minimum separation distance of 20 cm must be maintained between the user's body and this device, including the antenna. Third-party belt-clips, holsters, and similar accessories used by this device should not contain any metallic components. Body-worn accessories that do not meet these requirements may not comply with RF exposure requirements and should be avoided. Use only the supplied or an approved antenna.

The device complies with RF specifications when the device used at 20 cm from your body.

This device in compliance with the essential requirements and other relevant provisions of S.I. 2017 No. 1206. All essential radio test suites have been carried out.

This device in compliance with the essential requirements and other relevant provisions of Directive 2014/53/EU. All essential radio test suites have been carried out.

Function	Operation Frequency	Max RF output power
Bluetooth	2402MHz~2480MHz	-1.42dBm

FCC Warning

This device complies with Part 15 of the FCC Rules. Operation is subject to the following two conditions:

- (1) This device may not cause harmful interference.
- (2) This device must accept any interference received, including interference that may cause undesired operation.

NOTE: This equipment has been tested and found to comply with the limits for a Class B digital device, pursuant to Part 15 of the FCC Rules. These limits are designed to provide reasonable protection against harmful interference in a residential installation.

This equipment generates uses and can radiate radio frequency energy and, if not installed and used in accordance with the instructions, may cause harmful interference to radio communications. However, there is no guarantee that interference will not occur in a particular installation. If this equipment does cause harmful interference to radio or television reception, which can be determined by turning the equipment off and on, the user is encouraged to try to correct the interference by one or more of the following measures:

- Reorient or relocate the receiving antenna.
- Increase the separation between the equipment and receiver.
- Connect the equipment into an outlet on a circuit different from that to which the receiver is connected.
- Consult the dealer or an experienced radio/TV technician for help.

NOTE: The manufacturer is not responsible for any radio or TV interference caused by unauthorized modifications to this equipment. Such modifications could void the user's authority to operate the equipment.

FCC Radiation Exposure Statement

This equipment complies with FCC radiation exposure limits set forth for an uncontrolled environment. This equipment should be installed and operated with minimum distance 20 cm between the radiator & your body.

KCC Warning

인증받은자의 상호: Woan Technology (Shenzhen) Co., Ltd.
제품명/모델명: 특정소출력 무선기기(무선데이터통신시스템용 무선기기) / W0701600
제조사 및 제조국가: Woan Technology (Shenzhen) Co., Ltd. /China
제조년월: 2020.06
인증번호: R-R-Woa-W0701600
이 장치는 보안성이 없으므로 통신보안에 위배되는 사항의 통신을 금지하며 운용 중

NCC Warning

依據低功率電波輻射性電機管理辦法

第十二條

※經型式認證合格之低功率射頻電機，非經許可，公司、商號或使用者均不得擅自變更頻率、加大功率或變更原設計之特性及功能。

第十四條

※低功率射頻電機之使用不得影響飛航安全及干擾合法通信；經發現有干擾現象時，應立即停用，並改善至無干擾時方得繼續使用。

-前項合法通信，指依電信法規定作業之無線電通信。

-低功率射頻電機須忍受合法通信或工業、科學及醫療用電波輻射性電機設備之干擾。

