

ANIMAL BOULEVARD®

## BICYCLE TRAILER FOR DOGS Manual

This manual contains safety, assembly, use and maintenance instruction.  
Read these instructions carefully before use and keep them for future reference.

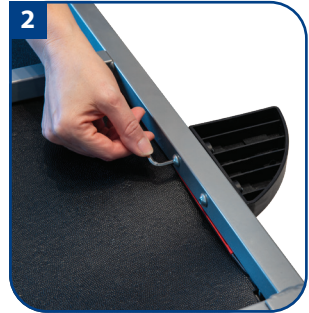


AB 45 000



AB 45 001

# QUICK START GUIDE



## QUICK START GUIDE



# CONTENTS

---

1. Parts and Features .....	6
2. Install safety fins.....	6
3. Unfold frame .....	7
4. Attach wheels .....	8
5. Extend and secure tow bar .....	9
6. Insert safety flag.....	10
7. Close front and rear door.....	11
8. Attach trailer to bicycle .....	12
9. Attach safety short leash.....	13
10. Disassembly and storage.....	14

## SAFETY

### **FAILURE TO FOLLOW THE SAFETY INSTRUCTIONS LISTED BELOW MAY RESULT IN SERIOUS INJURY.**

Always read and understand the information and warnings in this manual before using the Bicycle Trailer.

Always keep this manual for reference and include it with resale of the Bicycle Trailer.

#### **ASSEMBLY WARNING**

- This product must be assembled according to manufacturer’s instructions by an adult who has read and understands the information and warnings in this manual.
- Do not use the product if there are any missing or damaged parts.
- Immediately dispose of all plastic bags and wrapping material. **Plastic bags are a choking hazard for children and pets.**
- Always check the assembly (i.e. crossbar locked, screws tight) before using the product.
- Use caution to avoid pinch injuries when folding or unfolding the trailer.
- Never allow children to assemble, fold, or disassemble the trailer.

#### **TAILER USE WARNING**

- **This product is not to be used as a child’s vehicle!**
- The maximum weight capacity is 40kgs for the medium trailer (product no. AB 45 000) and 50kgs for the large trailer (product no. AB 45 001).

## SAFETY

### **MAINTENANCE:**

- Have your bicycle trailer serviced by a bicycle repair professional at least once a year.
- Do not use accessories not approved by the manufacturer.
- Do not leave the trailer in direct sunlight for a long period of time to avoid colour fading.
- Do not leave the trailer in a humid environment for a long period of time to avoid corrosion of the metal parts.
- Check the trailer for damage each time before using. Do not use if it is damaged.
- Be sure all fasteners are locked and tight. Tighten or lock if necessary.
- Overinflation of the tires may result in failure and is a risk for serious injury.
- Do not exceed maximum pressure as shown on tire sidewalls.
- If necessary inflate the tires within the shown range. Always use a foot or hand pump to inflate the tires. Do not use an air compressor to avoid overinflation!
- The safety flag and reflectors must be in place. Do not use the trailer without the safety flag or reflectors in place.
- Never place cargo together with your pet in the cabin.
- Always use a wheel splash guard on your bicycle to protect your pet in the trailer.

### **SAFETY RIDING WARNING**

- Do not pull or push the trailer with a motorised vehicle.
- Comply with the local regulations on trailer and bicycle traffic.
- Make sure your bicycle brakes work properly. Braking distance is increased when pulling a trailer.
- Avoid braking suddenly.
- Keep a safe speed below 25km/h. The trailer is not equipped to run at high speed.
- Always remember this trailer requires a wide turning radius. Do not turn sharply. Sharp turns or changes in direction may cause the trailer to tip over.
- Always remember to provide extra space for the trailer when near curbs, parked cars, and other obstacles.

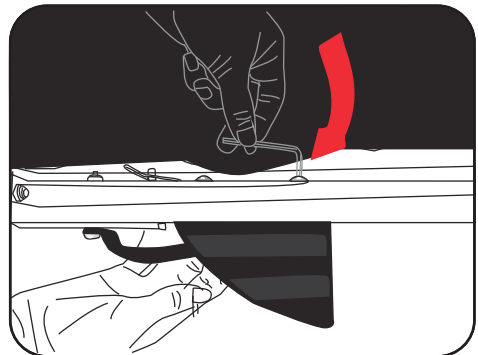
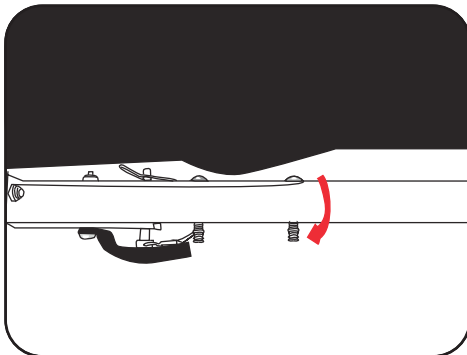
## 1. PARTS AND FEATURES

1. Wheels
2. Frame
3. Safety fins
4. Coupling connectors
5. Safety flag



## 2. INSTALL SAFETY FINS

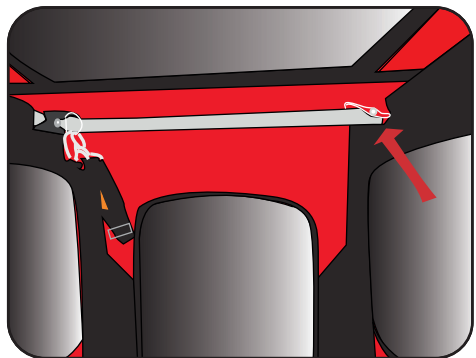
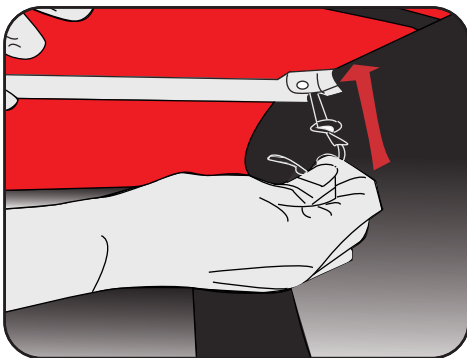
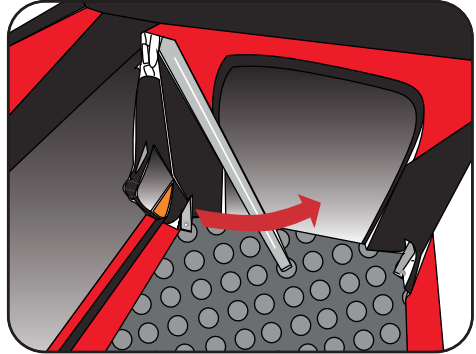
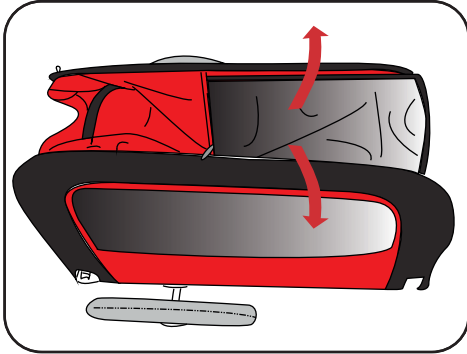
1. Remove screws from fin and insert them through the frame.
2. Attach correct fin on each side.
3. Lock screws on each fin.



### 3. UNFOLD FRAME

---

1. Lift both sides of the cabin.
2. Lift crossbar and place in position.
3. Lock crossbar with pin and lock the hook.
4. Pull crossbar to ensure it is locked

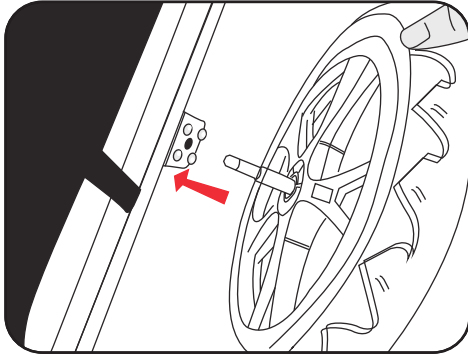


## 4. ATTACH WHEELS

---

**WARNING! Wheels that are not securely locked in place may fall off and cause serious injury!**

1. Insert axle of wheel into rear wheel bracket hole.
2. Push wheel into bracket until you hear axle click into place.

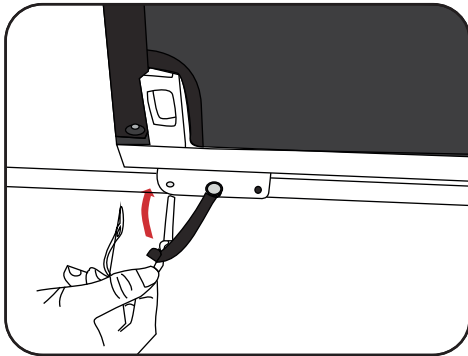
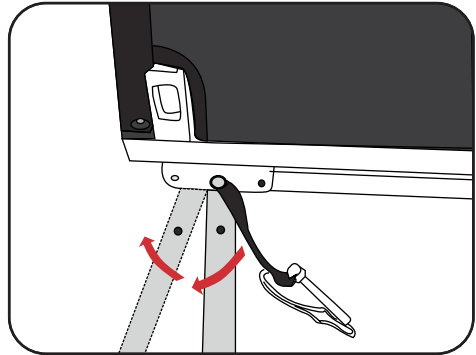
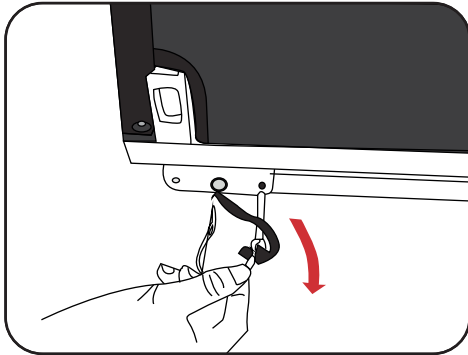




## 5. EXTEND AND SECURE TOW BAR

---

1. Remove locking pin of tow bar bracket.
2. Rotate tow bar until it rests on the front end of the frame.
3. Insert locking pin through both frame and tow bar and lock the hook.
4. Check if tow bar is securely locked in place.

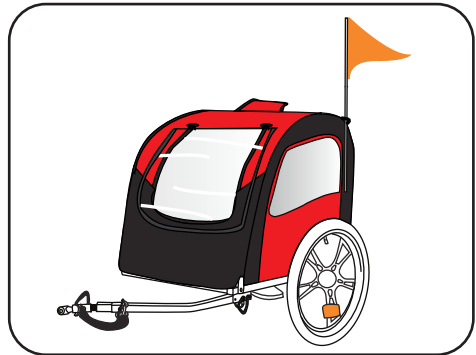
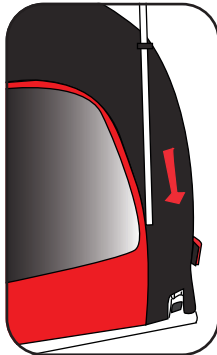
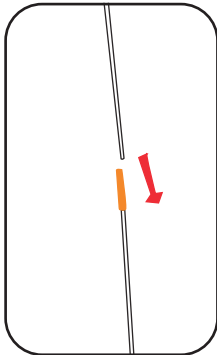


## 6. INSERT SAFETY FLAG

---

**IMPORTANT! The safety flag is an important safety feature that warns others a trailer is present. Always have the safety flag on the trailer when in use.**

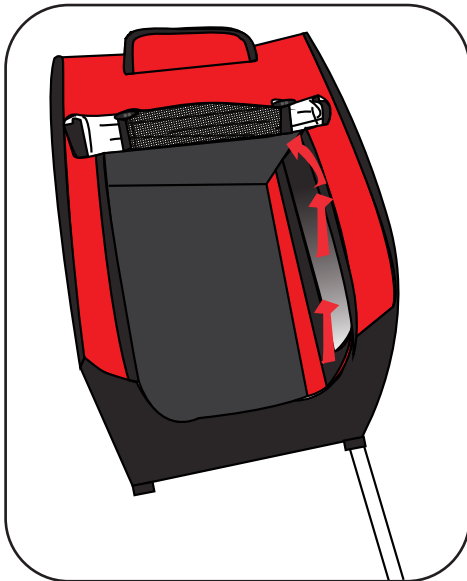
1. Assemble flag pole sections by sliding the top half of the pole into the opening of the bottom half of the pole.
2. Insert flag pole into loop and sleeve located at the rear corner of the trailer.



## 7. CLOSE FRONT AND REAR DOOR

---

1. Use zippers to open or close front and rear doors.
2. Rolled up rain cover and mesh screen can be tied up with loops and buttons.

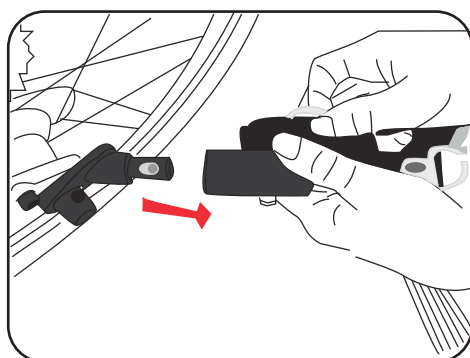
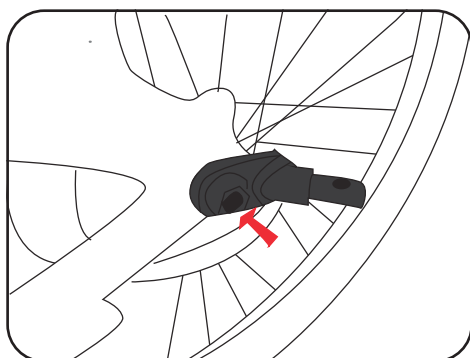
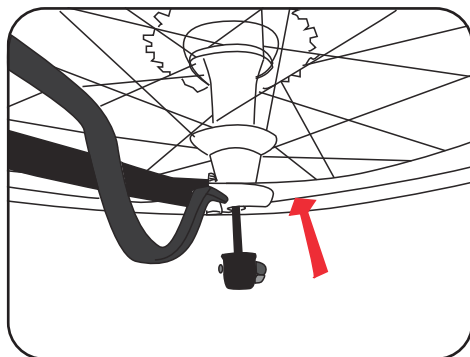
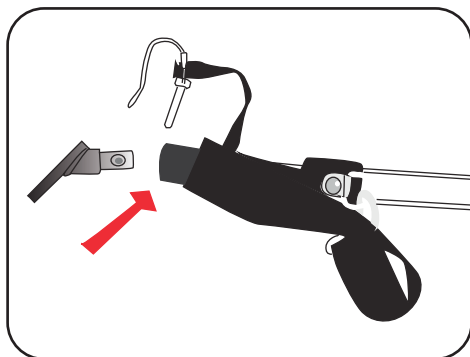


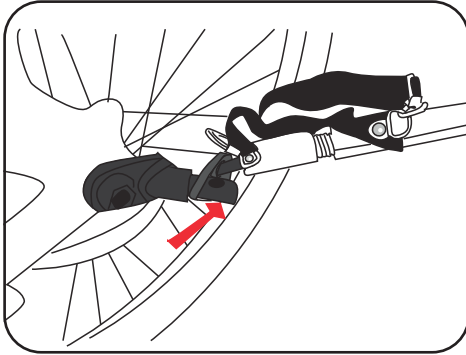
## 8. ATTACH TRAILER TO BICYCLE

**IMPORTANT!** Make sure coupling and tow bar are straight in line to reduce tow bar's pressure.

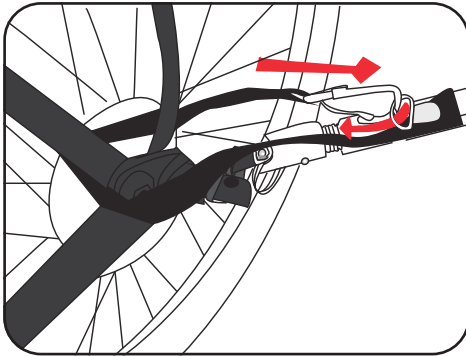
**WARNING!** Always make sure coupling is firmly attached to wheel axle and tow bar is firmly attached to coupling!

1. Remove cap screw of rear axle of bicycle.
2. Fix coupling to rear axle and screw cap back on. Make sure the coupling is straight and easy to connect to the tow bar.
3. Connect tow bar to coupling: align tow bar hole with coupling hole and insert the locking pin. Lock hook.



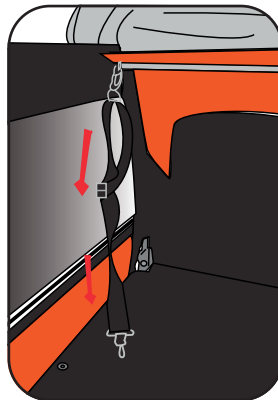


4. Attach safety belt around a part of bicycle frame for extra protection.



## 9. ATTACH SAFETY SHORT LEASH

1. Attach short leash to cross bar.
2. Adjust length and secure dog.



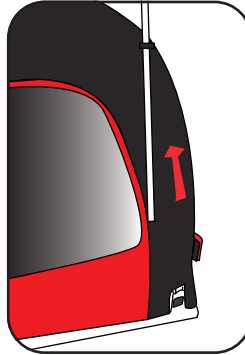
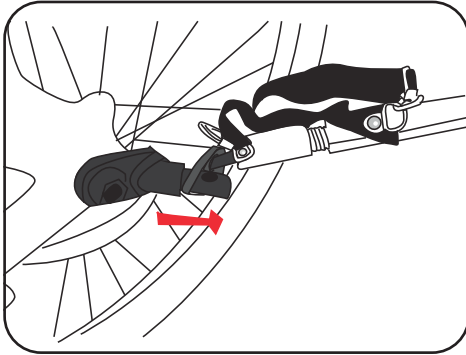
## 10. DISASSEMBLY AND STORAGE

---

### 1. Remove tow bar from bicycle:

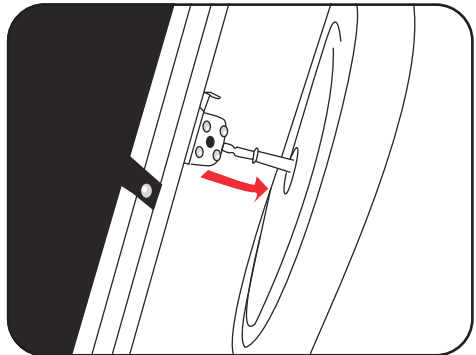
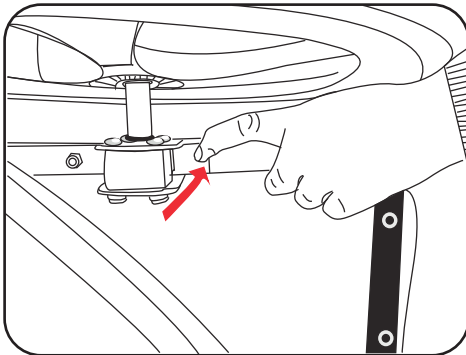
- Unfasten safety strap clip from tow bar D-ring, and unwrap it from the bicycle frame.
- Clip strap back onto D-ring of the tow bar.
- Remove locking pin from tow bar coupling.
- Remove tow bar from coupling.

### 2. Disassemble flag.



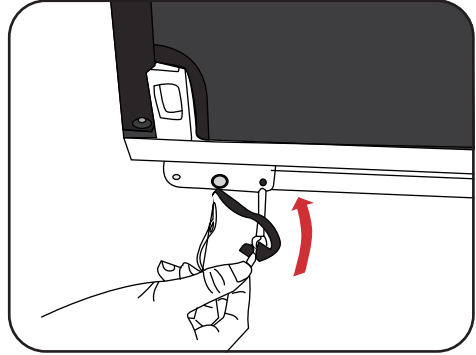
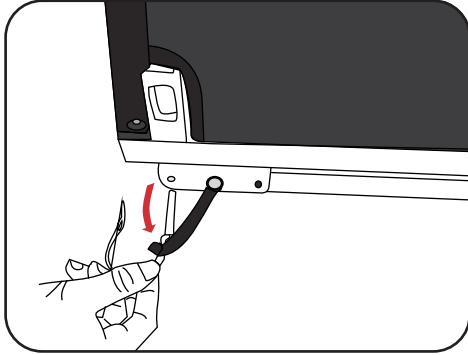
### 3. Remove wheels:

- Pull wheel release lever out and hold.
- Remove wheel and release lever.



#### 4. Disassemble tow bar:

- Unlock hook and take out locking pin.
- Rotate tow bar to fold it back.
- Fix tow bar with locking pin and hook.



#### 5. Fold trailer frame:

- Unlock hook and take out locking pin.
- Rotate cross bar to fold it back.
- Fold down both sides of the cabin.

#### 6. Non-slip mat can be taken out to clean.

