

wallbox 

Pulsar Pro

Expanding our Pulsar family with
a new solution for shared spaces.

Built for **every** user.



Pulsar Pro is the new shared charging solution designed to fit perfectly with condominiums, workplaces and fleets.



RELIABLE

- **4G** to enjoy full connectivity, minimal interruptions and increased uptime.
- **Robust design** protects against extreme weather, water, dust and impact.
- **Advanced CPU** for higher processing speeds and performance.



EASE OF USE

- **Attractive and compact design** with intuitive Halo Light to show charging status.
- **Easy authentication and payment** with RFID, NFC* and myWallbox App.

*HW ready. Contact your sales representative for more information.



PEACE OF MIND

- **Encrypted communication** that protects personal data.

ENERGY MANAGEMENT

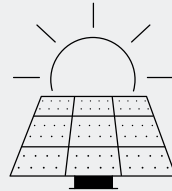
Compatible with all Wallbox Energy Management Solutions

Solutions that maximize savings.

ECO-SMART

Solar EV Charging

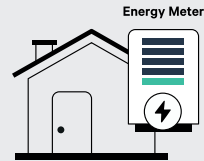
Use the surplus energy from a building's solar panels to avoid high grid energy prices. Charge with 100% solar energy or a mix of solar and grid energy.



POWER BOOST

Dynamic Load Balancing for Single EVs

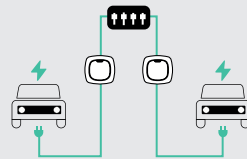
Charge at the highest speed possible, depending on the building's real-time energy use, without having to upgrade the electrical infrastructure.



DYNAMIC POWER SHARING

Dynamic Load Balancing for Multiple Vehicles

Scale your charging infrastructure without expensive electrical retrofits. Intelligently distribute energy now up to 100 chargers.



Ask your sales representative how you can upgrade your smart charging system today.

Power meter required
Eco-Smart not compatible with Power Sharing and OCPP



MYWALLBOX APP

Control at your fingertips with the myWallbox app

Monitor the **status of your charger** and control it from anywhere.

Get **energy use** and spending statistics in real-time.

Secure your charger with **remote locking and unlocking**.

Access all **Energy Management Solution** features.



Activate **Halo Light Standby** so the light will stay off until you interact with the charger.



PULSAR PRO

Technical Specifications

General specifications

Model	Pulsar Pro
Colour	Black & Grey
Cable Length	5m / 7m
Charging Mode (IEC 61851-1)	Mode 3
Dimensions	198mm x 201mm x 99mm (without cable)
Weight	1.3kg (without cable)
Operating temperature	-30°C to +50°C
Storage temperature	-40°C to +70°C
Regulatory information	CE, UKCA, EAC and RCM Mark. IEC 61851-1, IEC 61851-21-2, IEC 62196, BS 7671, IEC 60364. RED Directive 2014/53/EU and RoHS Directive 2011/65/EU Compliant with UK regulations on smart charging
Cybersecurity	Tamper detection, secure update, secure boot, secure storage & encrypted communications
Charging power	7,4kW / 11kW ^[1] / 22kW
Rated Voltage AC ± 10%	230V / 400V
Rated Current	32A (1P) / 32A (3P)
Connector Type (IEC 62196)	Type 2
Cable Width	up to 13mm ²
Configurable Current	from 6A to rated current
Rated Frequency	50Hz / 60Hz
Protection Rating	IP55 / IK10
Surge Category	CAT III
Residual Current Detection	DC 6mA
RCD	RCD Type A is required ^[2]
Internal metering	Class A (Error ≤ 2%). Factory calibrated

User interface & Communications

Connectivity	4G, WiFi, Bluetooth
User Identification	RFID, myWallbox App & Portal
User interface	myWallbox App & Portal
External communication interface	OCPP, partner API and SDK
Charger Status Information	Halo RGB LED, myWallbox App & Portal
Included Features	Schedules, Statistics, lock/unlock/autolock, charger remote control, User Management, Pay per Month, Pay per charge, Power Sharing
Optional features ^[3]	Power Boost, Dynamic Power Sharing, Eco-Smart, External MID
HW ready features	NFC



[1] Limited by Software. [2] According to local regulations. [3] Power meter required

Want to learn more about Pulsar Pro?

Contact us: sales@wallbox.com | +34 932 200 451





www.wallbox.com

Copyright 2023, Wallbox Chargers S.L.