

# SC 260



Quick Guide  
Kurzanleitung  
Guide rapide  
Guida rapida

Instrucciones resumidas  
Guía rápido  
Beknopte handleiding



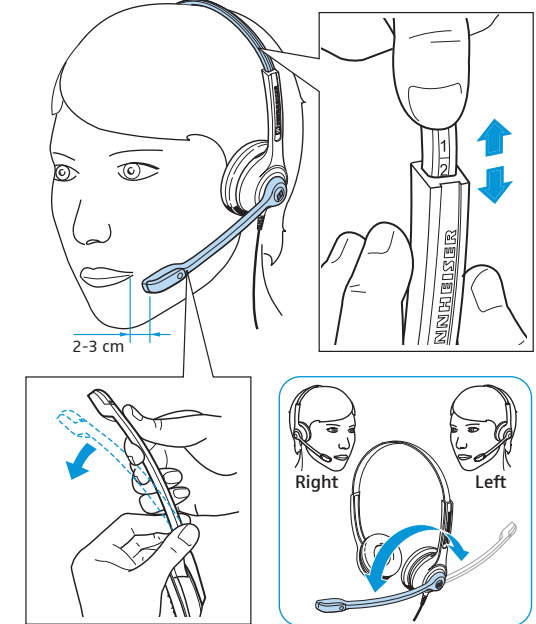
**Delivery includes** | Lieferumfang | Contenu |  
Volume di forniture | Volumen de suministro |  
Itens fornecidos | Leveringsomvang



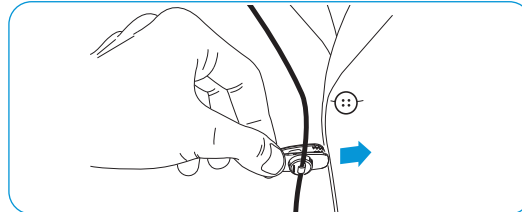
**Connection possibilities** | Anschlussmöglichkeiten |  
Possibilités de raccordement | Possibilità di collega-  
mento | Posibilidades de conexión | Ligações  
possíveis | Aansluitmogelijkheden



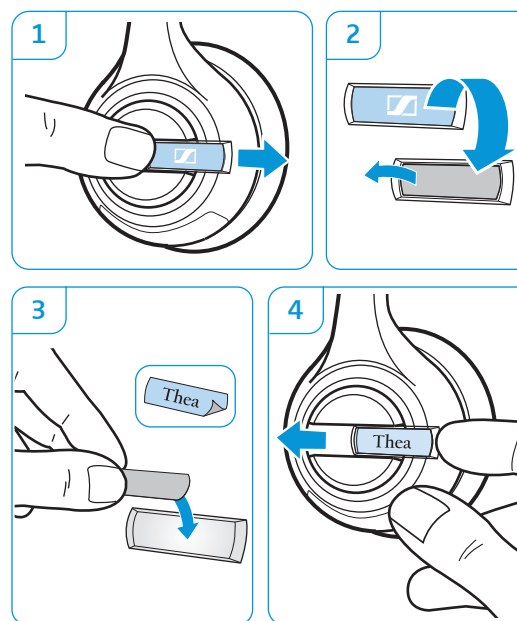
**Wearing the headset** | Headset aufsetzen |  
Mettre le casque-micro | Indossare l'headset |  
Ponerse los auriculares | Colocar o micro-  
auscultador | De headset opzetten



**Using the cable clip** | Kabel-Clip verwenden |  
Utiliser la pince pour câble | Utilizzo della clip  
per cavo | Utilizar el clip de cable | Utilizar  
o grampo para cabo | Kabelclip gebruiken



**Labeling the headset** | Headset kennzeichnen |  
Marquer le casque-micro | Contrassegni dell'headset |  
Marcar los auriculares con un nombre | Identificar  
o micro-auscultador | Headset markeren



**Detailed information** | Ausführliche Informatio-  
nen | Informations détaillées | Informazioni  
dettagliate | Informaciones detalladas |  
Informações detalhadas | Uitvoerige informatie

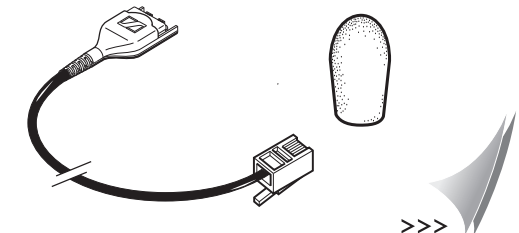


Sennheiser Communications A/S  
Langager 6, 2680 Solrød Strand, Denmark  
www.senncom.com

Printed in China, Publ. 06/11, A01



**Accessories** | Zubehör | Accessoires | Accessori |  
Accesorios | Acessórios | Toebehoren



# SC 260



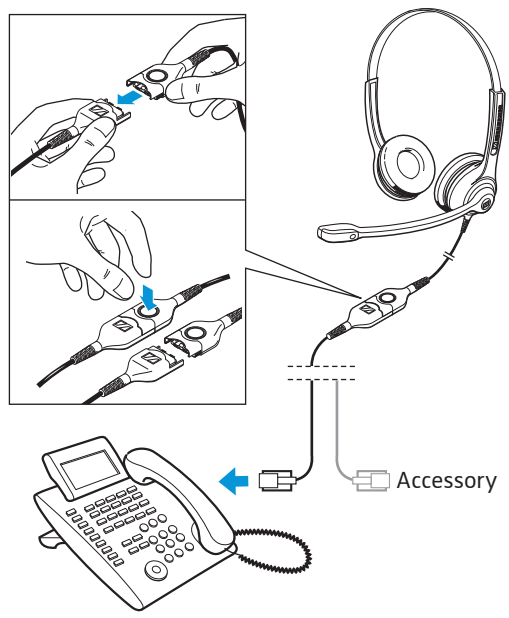
Quick Guide      Hızlı Kilavuz  
 Snabbguide      快速指南  
 Quick Guide      クイックガイド  
 Krótka instrukcja obsługi



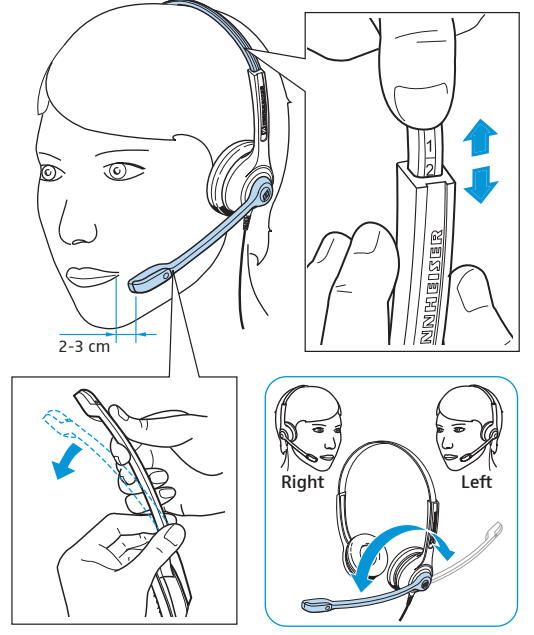
Leveringsomfang | Medföljande delar | Leveranseomfang | Zakres dostawy | Teslimat Kapsamı | 供货范围 | 同梱されているもの



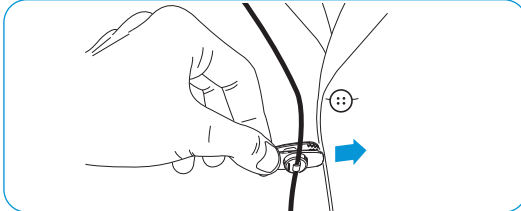
Tilslutningsmuligheder | Anslutning | Tilkoblingsmuligheder | Możliwości podłączenia | Bağlantı olanakları | 连接可能性 | 接続方法



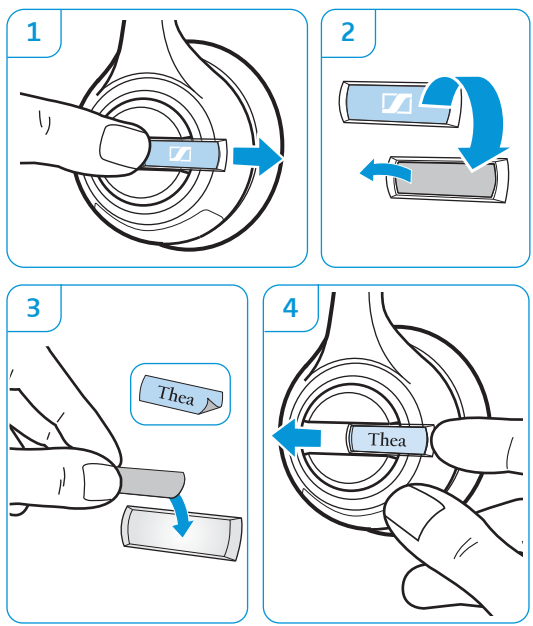
Brug af hovedsæt | Ta på headsetet | Sette på hodesettet | Zakładanie zestawu słuchawkowego | Kulaklığın takılması | 戴上耳机 | ヘッドセットを装着する



Brug af kabelklips | Använd kabelklämman | Bruk av kabelklips | Używanie zacisku kablowego | Kablo mandalı kullanılması | 使用耳机线夹 | ケーブルクリップを使用する



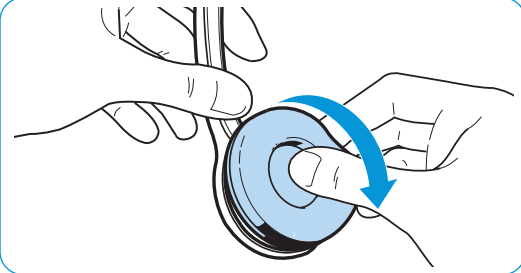
Identifikation af hovedsættet | Märk headsetet | Merke hodesettet | Oznakowanie zestawu słuchawkowego | Kulaklık setinin işaretlenmesi | 标记通讯耳 | ヘッドセットにラベルを付ける



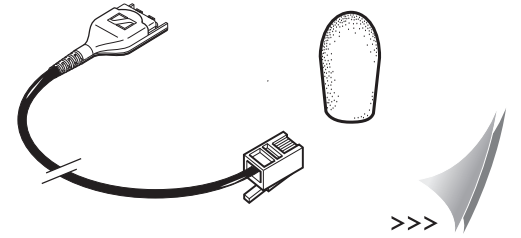
Udførlige informationer | Mer information | Detaljert informasjon | Szczegółowe informacje | Ayrıntılı bilgiler | 详细信息 | 詳細情報



Udskiftning af ørepolstringer | Byt öronkuddar | Utskiftning av öreputer | Wymiana poduszek słuchawkowych | Kulak yastığının değiştirilmesi | 更换耳垫 | イヤーパッドを交換する



Tilbehør | Tillbehör | Tilbehør | Akcesoria | Aksesuar | 附件 | アクセサリー



Sennheiser Communications A/S  
 Langager 6, 2680 Solrød Strand, Denmark  
 www.senncom.com

Printed in China, Publ. 05/11, A01

