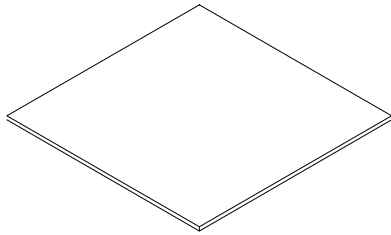
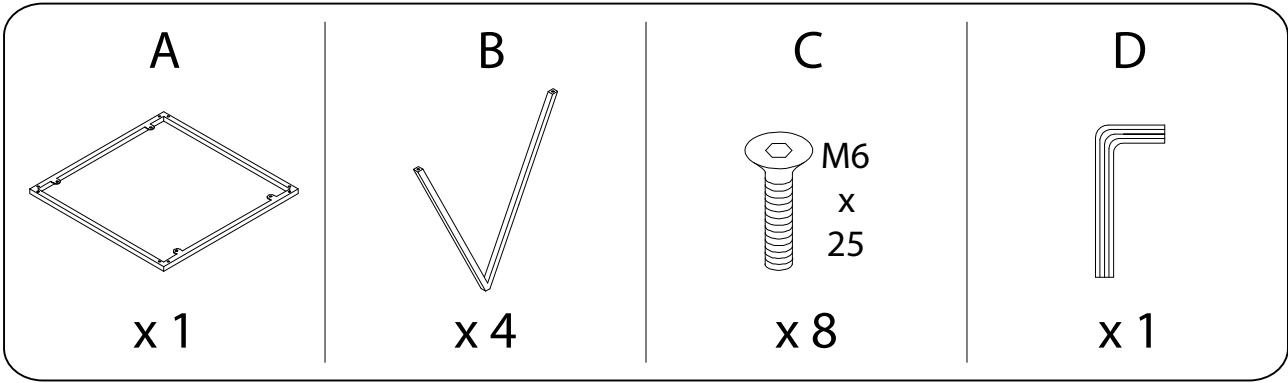
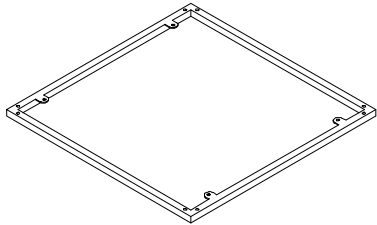


Diagram illustrating assembly steps and safety warnings:

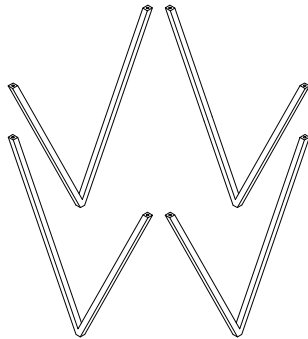
- Step 1:** Shows an L-shaped metal bracket being attached to a leg using a power drill. A warning triangle with an exclamation mark is present.
- Step 2:** Shows a rectangular block being placed on a surface. A warning triangle with an exclamation mark is present.
- Time:** A clock icon indicates a duration of 20'.
- Personnel:** A person icon indicates that 1 person is required for this step.



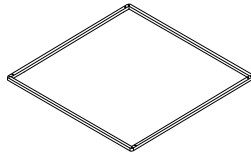
H



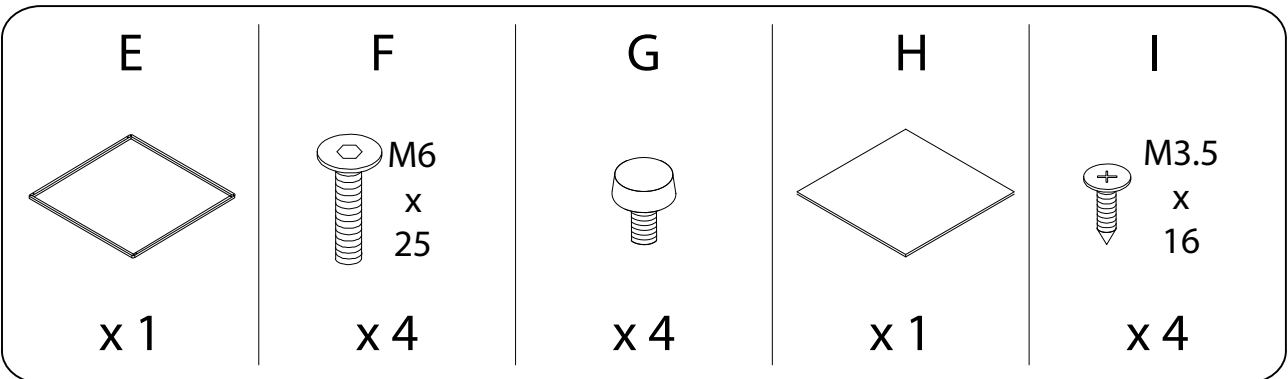
A



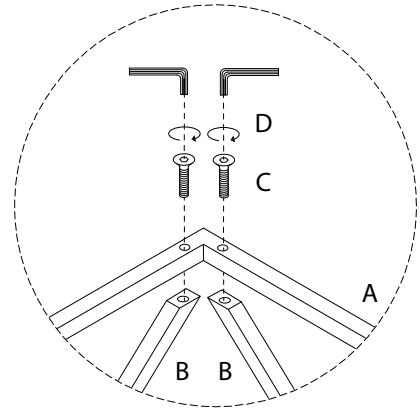
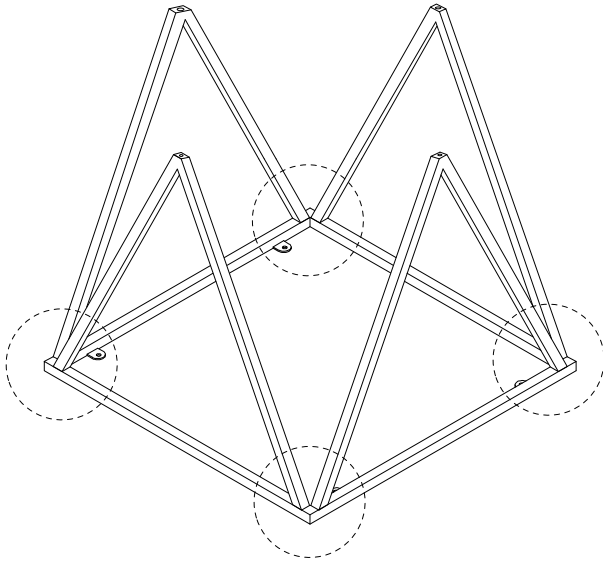
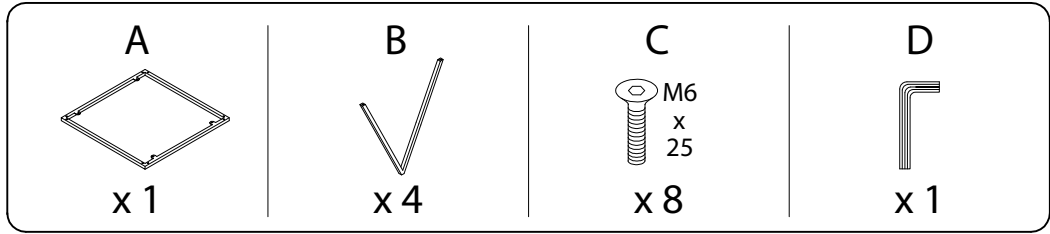
B x 4



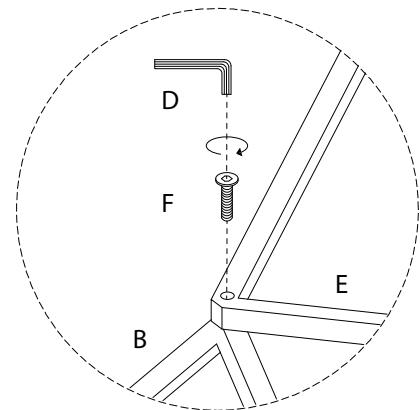
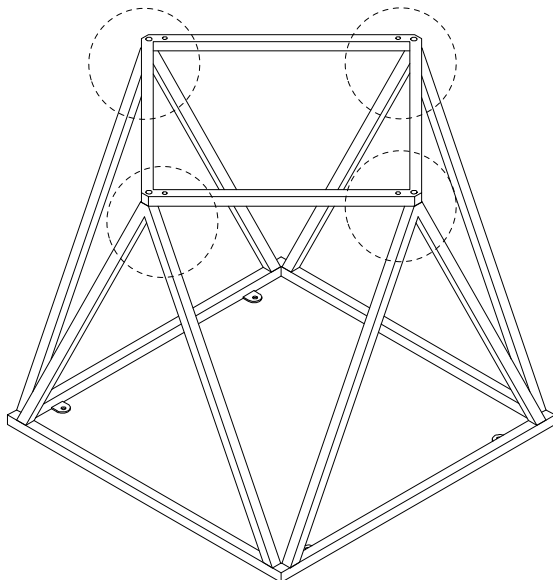
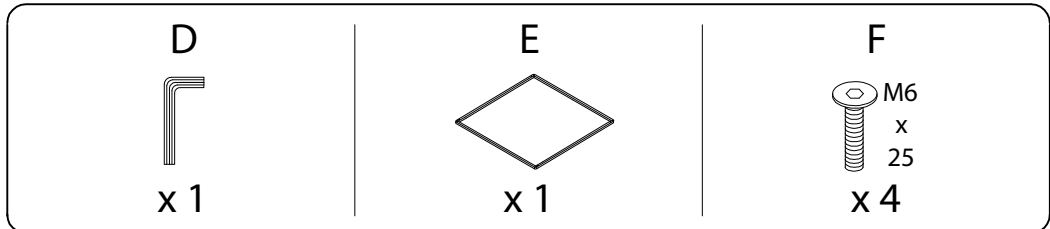
E



1



2

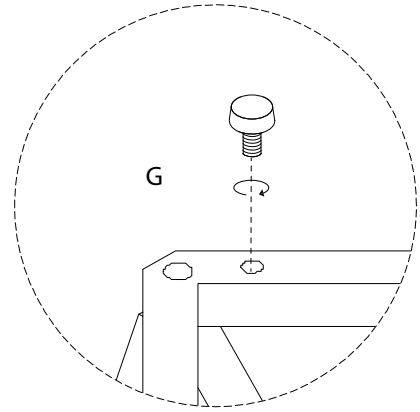
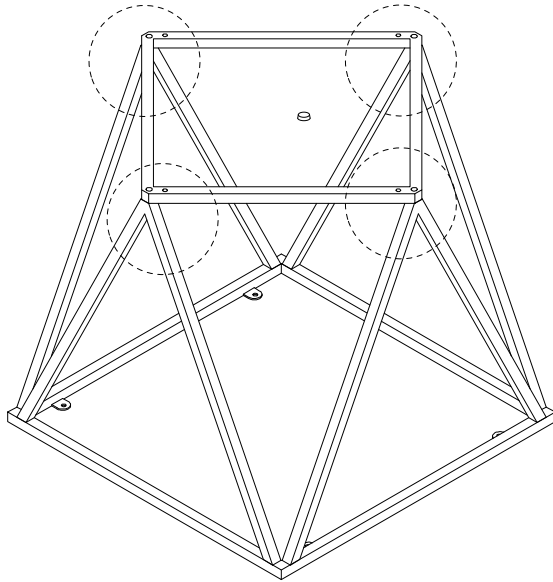


3

G

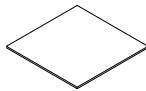


x 4



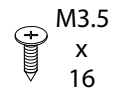
4

H



x 1

I



M3.5
x
16

x 4

