

FCC COMPLIANCE

NOTE: This equipment has been tested and found to comply with the limits for a Class B digital device, pursuant to Part 15 of the FCC Rules. These limits are designed to provide reasonable protection against harmful interference in a residential installation. This equipment generates, uses and can radiate radio frequency energy and, if not installed and used in accordance with the instructions, may cause harmful interference to radio communications. However, there is no guarantee that interference will not occur in a particular installation. If this equipment does cause harmful interference to radio or television reception, which can be determined by turning the equipment off and on, the user is encouraged to try to correct the interference by one or more of the following measures:

- Reorient or relocate the receiving antenna.
- Increase the separation between the equipment and receiver.
- Connect the equipment into an outlet on a circuit different from that to which the receiver is connected.
- Consult the dealer or an experienced radio/TV technician for help.

This device complies with Part 15 of the FCC Rules. Operation is subject to the following two conditions: (1) This device may not cause harmful interference, and (2) this device must accept any interference received, including interference that may cause undesired operation.

Caution: Modifications not authorized by the manufacturer may void users authority to operate this device. CAN ICES-3 (B)/NMB-3(B).

SAFE BATTERY USAGE

- Use alkaline batteries for best performance and longer life.
- Use only the battery type recommended for the unit.
- Batteries should be replaced only by an adult.
- Insert batteries with the correct polarity (+ and -).
- Do not mix old and new batteries.
- Do not mix alkaline, standard (carbon-zinc), or rechargeable batteries.
- Do not short-circuit batteries.
- When not used for an extended time, remove batteries to prevent possible leakage and damage to the unit.
- Do not mix rechargeable and non-rechargeable batteries.
- Rechargeable batteries are to be removed from the toy before charging.
- Rechargeable batteries are to be recharged only under adult supervision.
- Do not recharge non-rechargeable batteries.
- Exhausted batteries are to be removed from the toy.
- Do not dispose of batteries in fire as they may leak or explode.



'Let's care for the environment!'

The wheellie bin symbol indicates that the product must not be disposed of with other household waste. Please use designated collection points or recycling facilities when disposing of the item. Do not treat old batteries as household waste. Take them to a designated recycling facility.

Please keep this manual as it contains important information.



0620-1-E/INT
Printed in China

www.LOLsurprise.com
©2020 MGA Entertainment, Inc.
L.O.L. SURPRISE! REMIX™ and HAIR FLIP™ are trademarks of MGA in the U.S. and other countries. All logos, names, characters, likenesses, images, slogans, and packaging appearance are the property of MGA.

MGA Entertainment, Inc.
9220 Winnetka Ave. Chatsworth, CA 91311 U.S.A.
(800) 222-4685

MGA Entertainment UK Ltd.
50 Presley Way, Crownhill, Milton Keynes,
MK8 0ES, Bucks, UK
+ 0800 521 558

The preferred method of contact for Customer Service is through our e-mail contact form at www.mgae.com

MGA Entertainment (Netherlands) B.V.
Baronie 68-70, 2404XG Alphen a/d Rijn, The Netherlands
Tel: +31 (0) 172 758038
E-mail: kiantenservice@mgae.com

Imported by MGA Entertainment Australia Pty Ltd
Suite 2.02, 32 Delhi Road
Macquarie Park NSW 2113
1300 059 676



AGES 3+

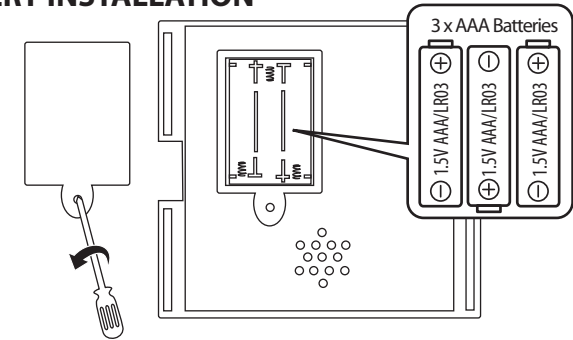


ADULT SUPERVISION REQUIRED
ADULT BATTERY INSTALLATION REQUIRED
SKUs: 566977 / 566977BULK, 566991

BATTERY INSTALLATION

Before beginning, an adult must install fresh alkaline batteries in the speaker. Here's how:

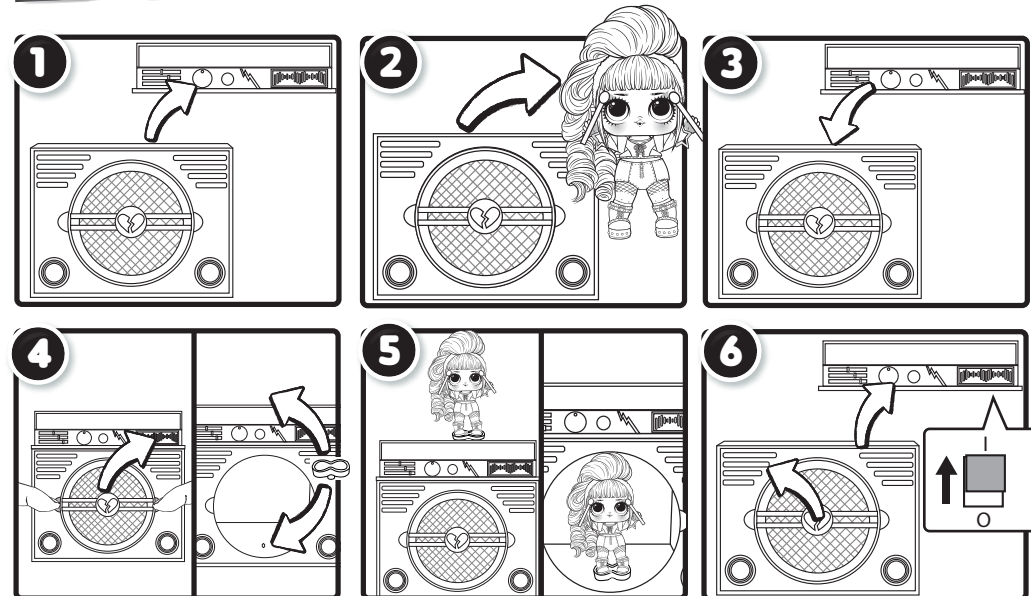
1. Remove the speaker's cover.
2. Using a Phillips screwdriver (not included) remove the screw and battery compartment cover under the speaker's cover.
3. Install three (3) 1.5V AAA (LR03) alkaline batteries (not included) making sure the (+) and (-) ends face the proper direction as indicated inside the battery compartment.
4. Replace the compartment cover and tighten the screw. Then, replace the speaker's cover.



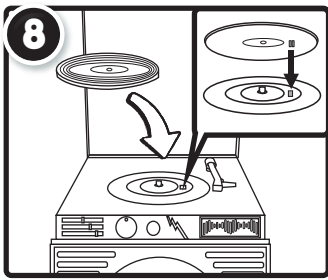
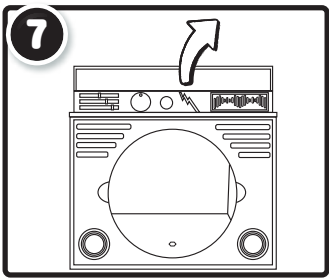
SPEAKER

IMPORTANT NOTE:

Each speaker plays a short verse. To hear all the verses, collect multiple L.O.L. Surprise! Remix™ dolls.

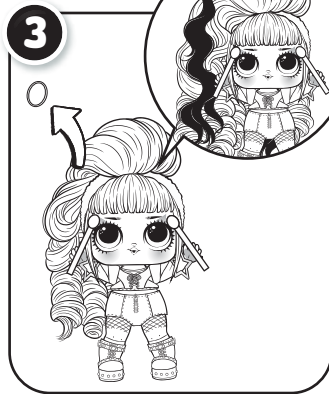
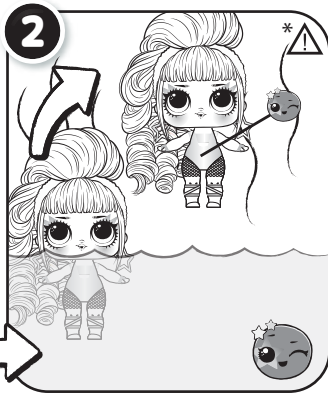
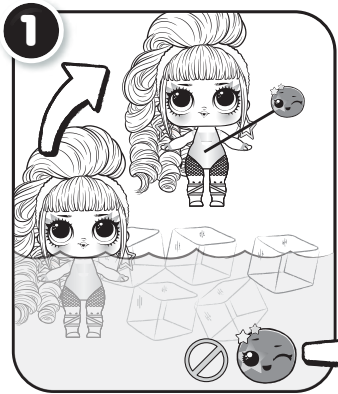


Move the switch under the speaker's cover from OFF (O) to the ON (I) position. For better sound, remove the front lid.



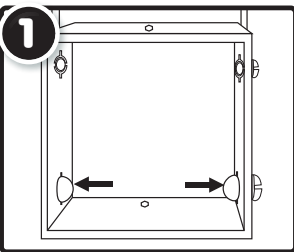
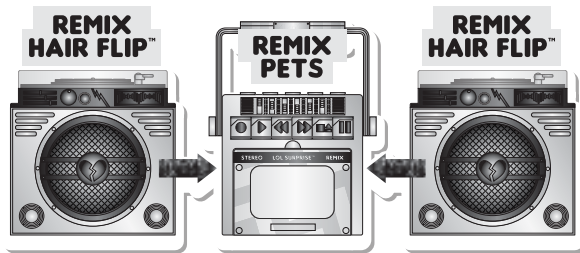
Push down on the record and spin it to hear a verse.

FEATURES

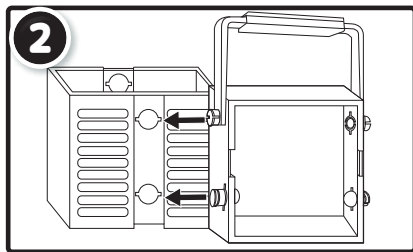


BOOMBOX

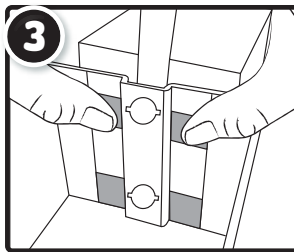
Collect multiple L.O.L. Surprise! Remix™ Hair Flip™ dolls and L.O.L. Surprise! Remix™ Pets (sold separately) to create a boombox!



Remove the front cover on the cassette player and push out the bottom pegs.



Remove the top cover on the speaker. Then, use slight force to insert the pegs on the cassette player to the openings on the speaker.



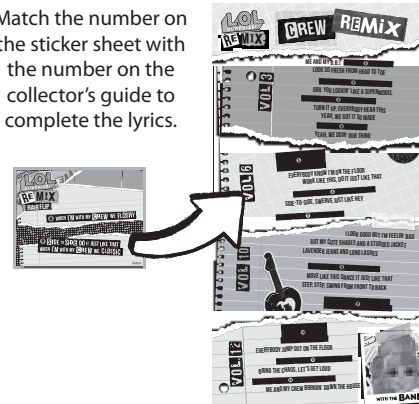
There are four squared marks inside the speaker's walls. When inserting the pegs, press in from both sides.

UNBOX A SONG

Each speaker has a unique piece of a song. Collect multiple L.O.L. Surprise! Remix™ Hair Flip™ dolls to hear all the verses of the song "Crew Remix." For the lyrics, visit MGAE.COM

LYRICS!

Match the number on the sticker sheet with the number on the collector's guide to complete the lyrics.



COLLECT THEM ALL!

Collect them all to find all the lyrics and put together the complete song.

- L.O.L. Surprise! Remix™ Hair Flip™
- L.O.L. Surprise! Remix™ Pets
- L.O.L. Surprise! O.M.G. Outrageous Millennial Girls Remix™
- L.O.L. Surprise! O.M.G. Outrageous Millennial Girls Remix™ 2020 Collector Edition

IMPORTANT INFORMATION

- Illustrations are for reference only. Styles may vary from actual contents.
- Please keep this manual as it contains important information.
- Before beginning, cover the play area to protect from possible water damage.
- An adult must be present when children are playing with water.
- Do not place the doll in extremely hot water (over 109.4°F/43°C).
- Do not store the dolls in direct sunlight for extended periods of time.
- Exposure to sunlight may deactivate color change feature.
- Thoroughly drain the doll on a dry towel in a well-ventilated area after use and before storing.
- Air dry the doll only. Do not place in the dryer or subject to excessive heat.
- Doll has two different hairstyles. Remove the bands in the hair and untwist the hair to reveal the second hairstyle.
- **Do not submerge the hair in water to avoid damaging it. When inserting the doll in water, cover the hair or only submerge the body.**
- Do not wash hair with soap and water or subject it to very high heat in any manner, as it will irreparably damage the hair.
- If hair gets wet, use a dry towel to dry off and allow it to air dry.
- Do not apply stickers to other surfaces, as it may not be completely removed.
- Keep moisture away from the battery compartment.
- Turn the speaker off (O) after use to conserve battery power.

COLOR -CHANGE

- Cold color change will start at approximately 59°F (15°C), but best results occur if the ice water is chilled to approximately 32°F (0°C) or colder.
- Warm color change will start at approximately 100.4°F (38°C), but best results occur if the water is approximately 104°F (40°C).
- Some dolls change color in cold and warm water! Try both!
- **Hair does not change color. Avoid submerging in water.**
- Color change will only work on certain parts of the doll's body or accessories. Not all included accessories change color.
- If color change does not work properly or quickly, the temperature of the doll's body may be too close to the temperature of the water.
- Color change temperatures may vary according to weather conditions.
- The color-change effect of the doll's body has a lengthy, but limited lifespan.

* ⚠ WARNING

An adult must be present and supervise when placing the doll in warm water, as the water may be hot.