

Quick®

CE REV 001A

High Quality Nautical Equipment

AJ1 THRUSTER COMMAND



IT

Manuale d'uso

EN

User's Manual

AJ1 COMANDO THRUSTER

AJ1 THRUSTER COMMAND

INSTALLAZIONE - INSTALLATION

COLLEGAMENTO ELETTRICO

Il comando AJ1 risponde agli standard EMC (compatibilità elettromagnetica) ma è richiesta una corretta installazione per non compromettere le proprie prestazioni e quelle dei comandi posti nelle vicinanze.

Per questo motivo i cavi del comando AJ1 devono essere distanti almeno:

- 1 m dai cavi che trasportano segnale radio (escluso radiotrasmettenti SSB).
- 2 m dai cavi che trasportano segnale radio di radiotrasmettenti SSB.

 **ATTENZIONE:** terminate le operazioni di manovra disattivare il comando (AJ1) tramite il pulsante di attivazione/spegnimento (il LED deve essere spento).

ELECTRIC CONNECTIONS

The AJ1 command complies with EMC standards (electromagnetic compatibility) but requires correct installation to avoid compromising its performance and that of the surrounding instruments.

For this reason the AJ1 command wires must be positioned at a distance of at least:

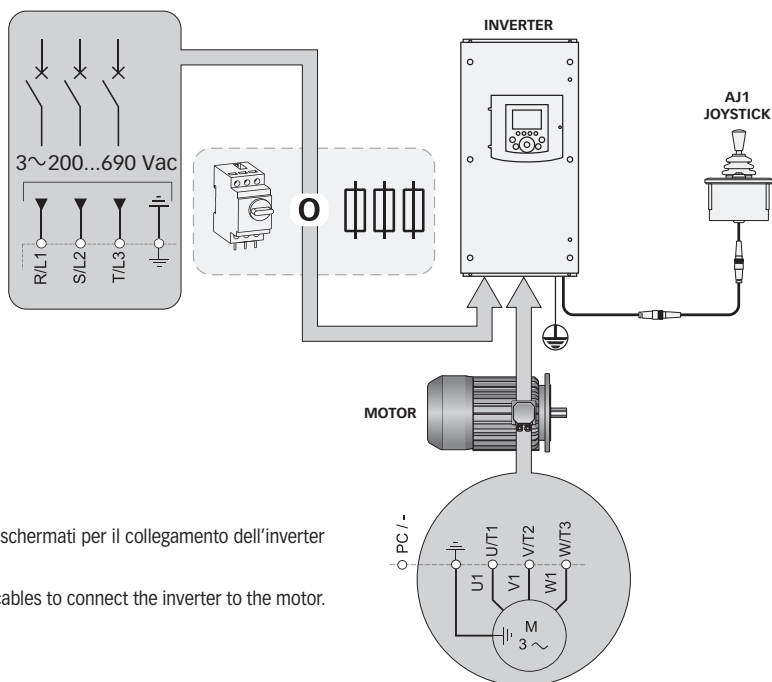
- 1 m away from cables that carry radio signals (except SSB radio transmitters).
- 2 m away from cables for SSB radio transmitter signals.


 **WARNING:** through the operations deactivate the command (AJ1) using the on/off button (the LED have to be turned off)


SCHEMA DI COLLEGAMENTO - CONNECTION DIAGRAM

SISTEMA BASE - BASIC SYSTEM

BTAC250-300

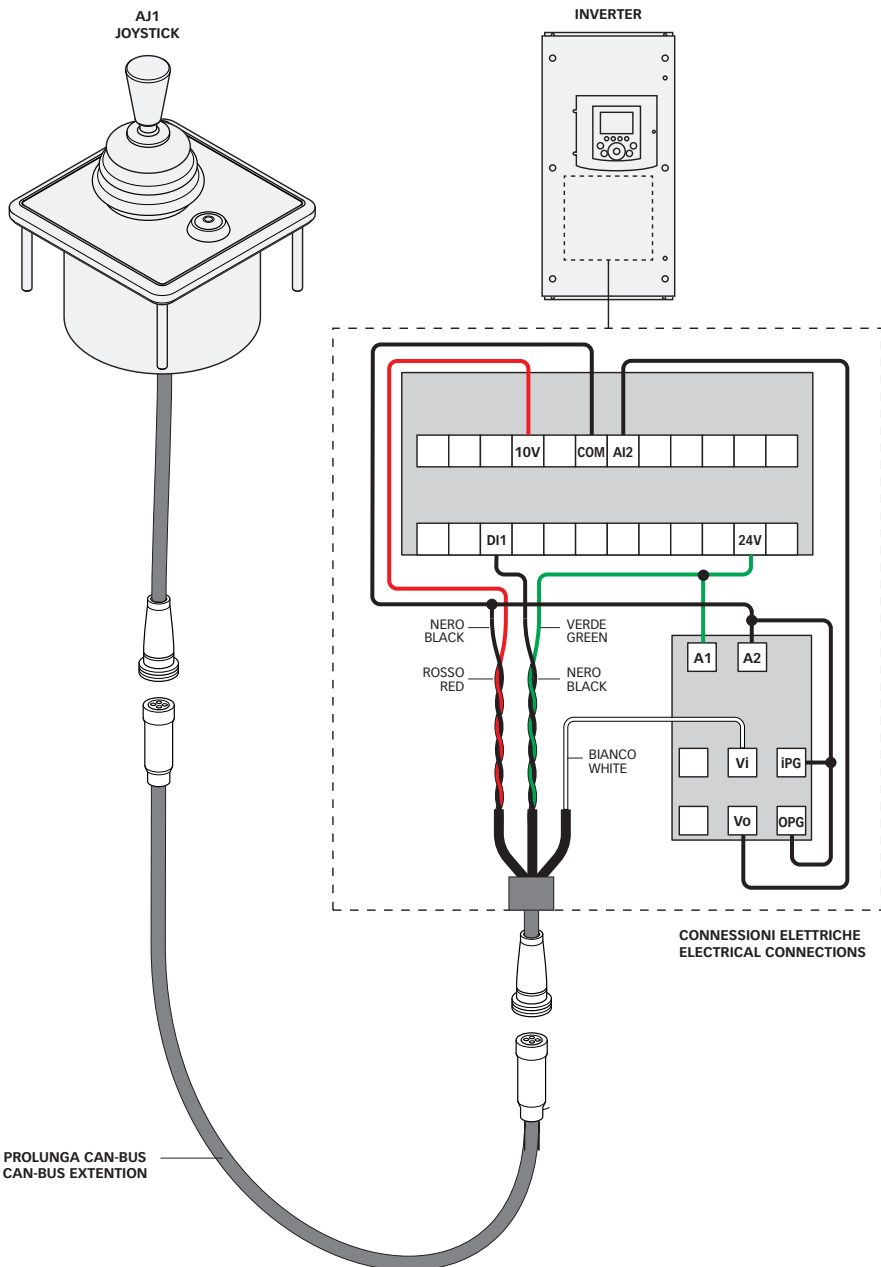


 Utilizzare cavi schermati per il collegamento dell'inverter al motore.

 Use shielded cables to connect the inverter to the motor.

SCHEMA DI COLLEGAMENTO - CONNECTION DIAGRAM

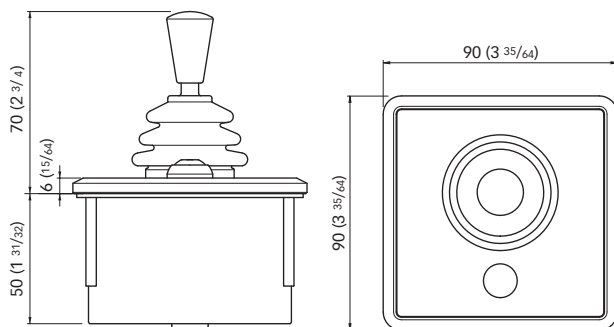
AJ1 JOYSTICK PROPORZIONALE
AJ1 PROPORTIONAL JOYSTICK



AJ THRUSTER COMMAND

R001A

DIMENSIONI - DIMENSIONS mm (inch)



Quick[®]
Nautical Equipment

QUICK® S.p.A. - Via Piangipane, 120/A - 48124 Piangipane (RAVENNA) - ITALY
Tel. +39.0544.415061 - Fax +39.0544.415047
www.quickitaly.com - E-mail: quick@quickitaly.com