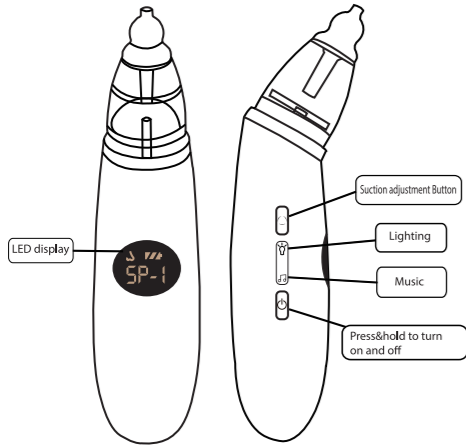
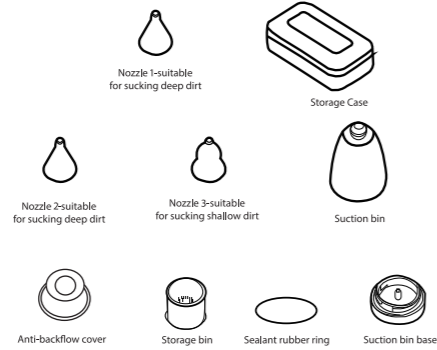


## 1 Product instruction

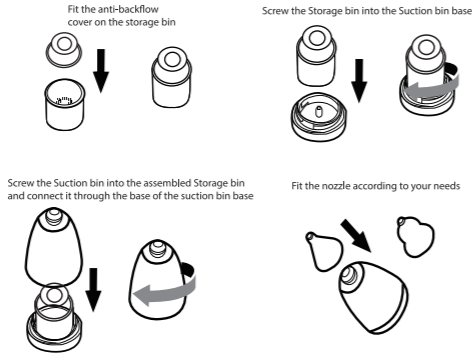


BC024

## 2 Arts information



## 3 Operation of suction bin



## 4 Connect the Suction bin to the main body

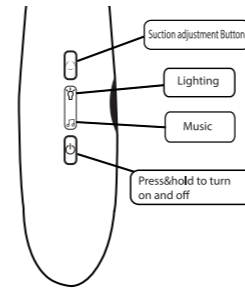


Align the assembled suction bin with the suction port of the main body and insert it, and then rotate it clockwise, finally confirm whether it will fall off after tightening.

### Note:

Suction will be affected if the sealant rubber ring falls off, so please check the sealant rubber ring at the suction bin base works well before screwing into the suction bin.

## 5 Explanation of settings



Long press to turn on / off, short press to pause

Nose sucking mode

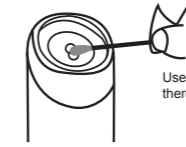
Suction adjustment: There are three gears for adjustment, the suction power increases from 1-3 gears in turn and the gears can be selected by pressing the button

Light: The light is off by default, press the button to turn on the light, then press to turn it off

Music: The music is off by default, press the button to turn on the music, and then press to turn it off

## 6 Note:

- ▲ Nasal aspirator can not turn on while charging. Please use while not being charged.
- ▲ Do not immerse the product



Use cotton swab to clean the main air inlet if there is weakly sticky nasal water flow back.

Please use the product according to user manual to avoid liquid being sucked into the machine



### SPECIFICATIONS

Item name	Electric Baby Nasal Aspirator
Model	BC024
Power Supply	3.7V
Input voltage	5V 1A
Battery	700mAh
Material	ABS + PC food grade PP Material
Certification	FDA, FCC, CE, ROHS, REACH, WEEE, LFGB Made in China

## 7 Precautions (Please read that carefully before use)

The gourd-type silicone nozzle is suitable for sucking shallow dirt, and the funnel-type nozzle is suitable for sucking deep dirt

It's easier to suck out the nasal mucus if the suction tip is close to the nasal cavity, cause low pressur will be formed if air cannot get in.

Please always pay attention to the nasal mucus storage bin during use. If there is too much nasal mucus, it may overflow into the suction port, which may cause malfunction of product. In this condition, please turn off the machine and clean it in time. You can use a cotton swab to dry the nasal mucus from the suction port. If the suction port has sucked a lot of nasal mucus, please be sure to shake it out or blow it dry with a hair dryer

Please remove the suction bin before cleaning. It is forbidden to immerse the product. The product is not waterproof but the silicone nozzle can be sterilized in boiling water.