

Smart Wi-Fi Wall Switch User Manual



Alexa TUTORIAL



Google Home TUTORIAL

Attention:

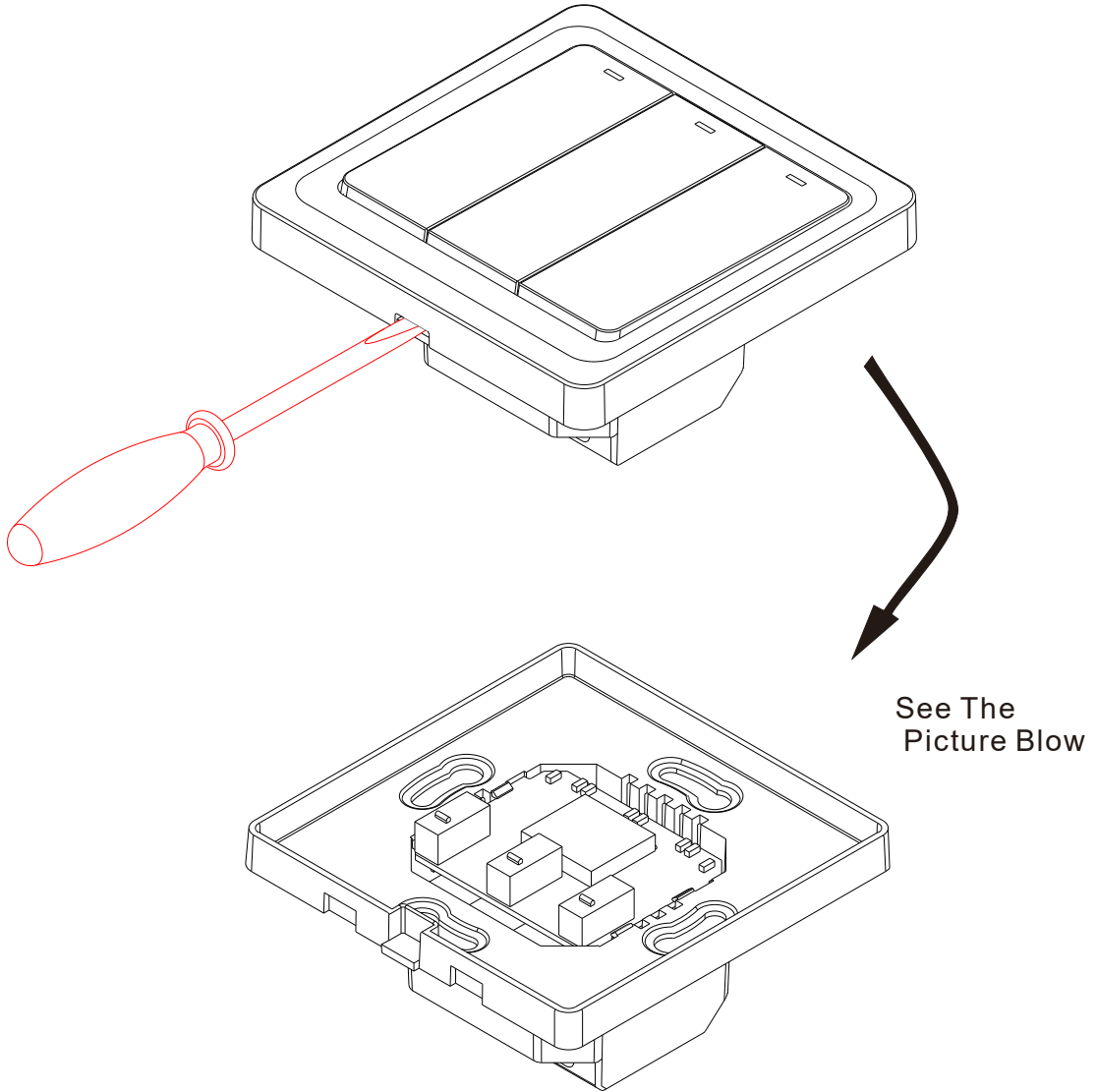
- 1.Products can only be paired on 2.4G-wifi-router,don't accept the 5G-wifi-router
- 2.Please set your home WiFi account name and passwords use numeric and letters,don't use special symbols

Installation Guide

1. Installation

Separate the upper and lower parts from the switch by screwdriver.

Dimension:3.4x3.4x1.7in



(Noted:Distinguish between each corresponding slot)

2. Prepare to install wiring

Attention: Neutral wire is required.

2.1 Live Wire connects "L" terminal

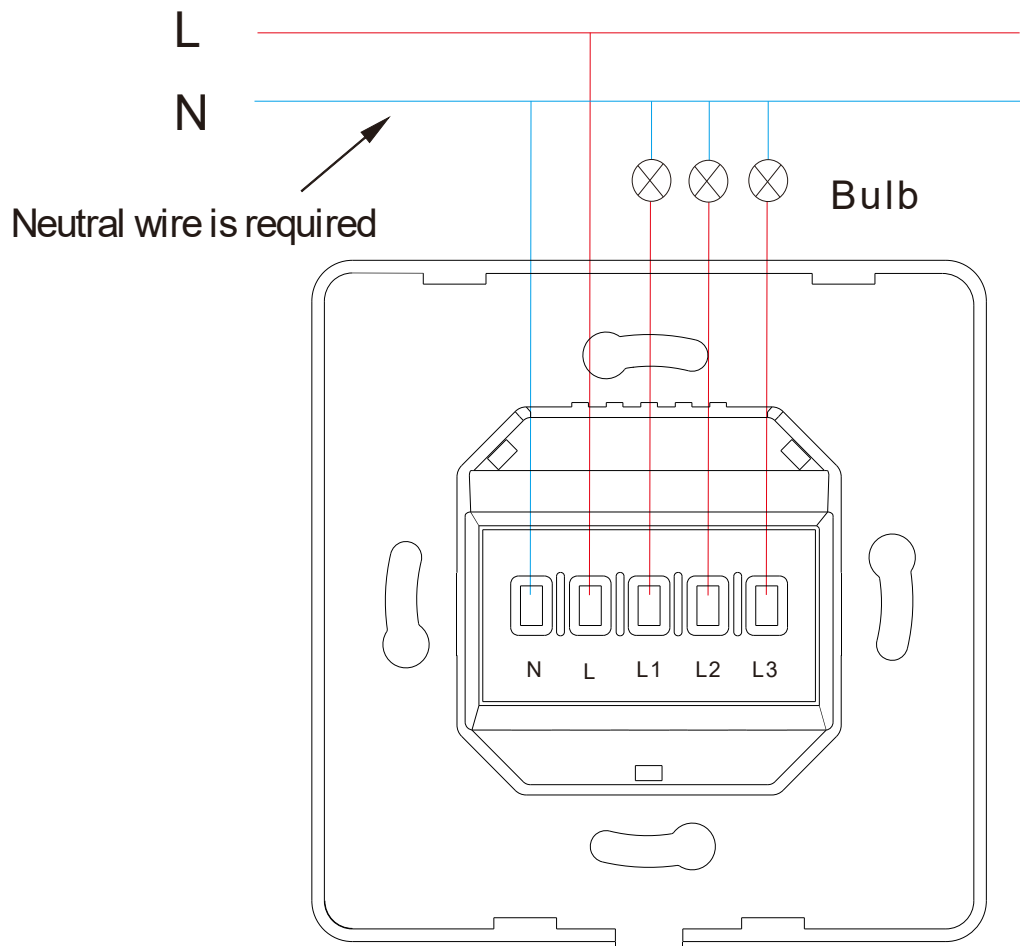
2.2 Bulb Wire connects "L1, L2, L3" terminal

2.3 Neutral Wire connects "N" terminal (Attention: **Neutral wire is required.**)

1 gang connects "L1" Terminal

2 gangs connects "L1, L2" terminal

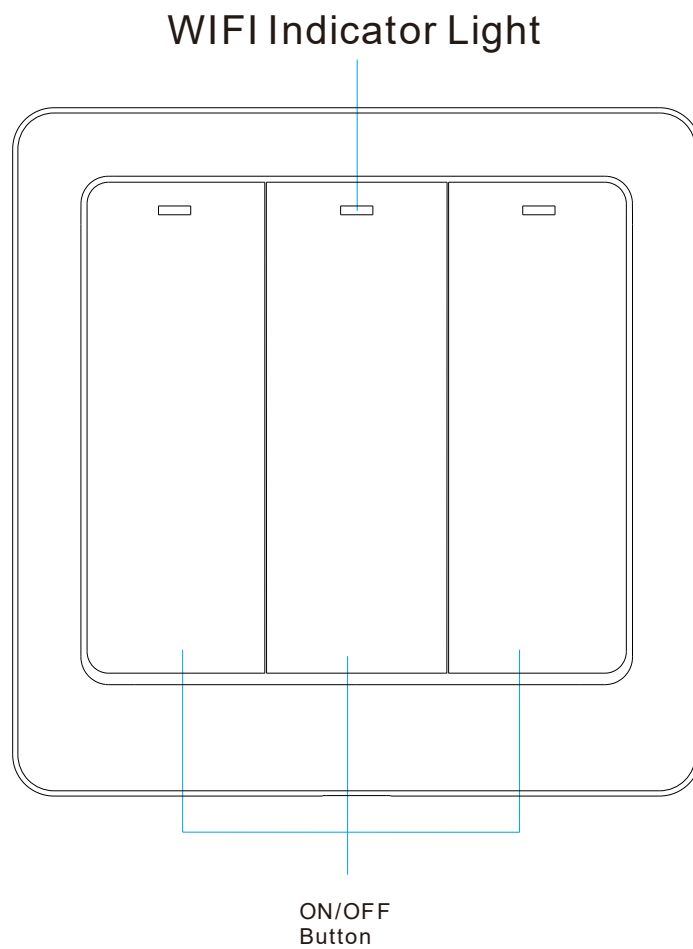
3 gangs connects "L1, L2, L3" terminal



wiring Schematic

3. Fix the switch onto wall

- 3.1 Put the switch lower parts into switch box in the wall;**
- 3.2 Mount the two side screws;**
- 3.3 Install the upper top case (install from up above);**
- 3.4 Cover the upper top case into switch;**
- 3.5 Turn on electricity, and then LED light will be flashed quickly for pairing.**



Indicator Light Status:

1. The red light continuous brightness

-The switch is connected succeed with mobile phone APP

2. The red light blinking slowly

- The switch is not connected to the network

3. The red light flash continuously and quickly

- The switch is currently on the status of matching with mobile phone APP.

4. The red light flash 1 time every 3 seconds

-The switch is into AP pairing Mode

How to download App?

Scan the QR code below or search Smart Life in IOS APP store or Google play.



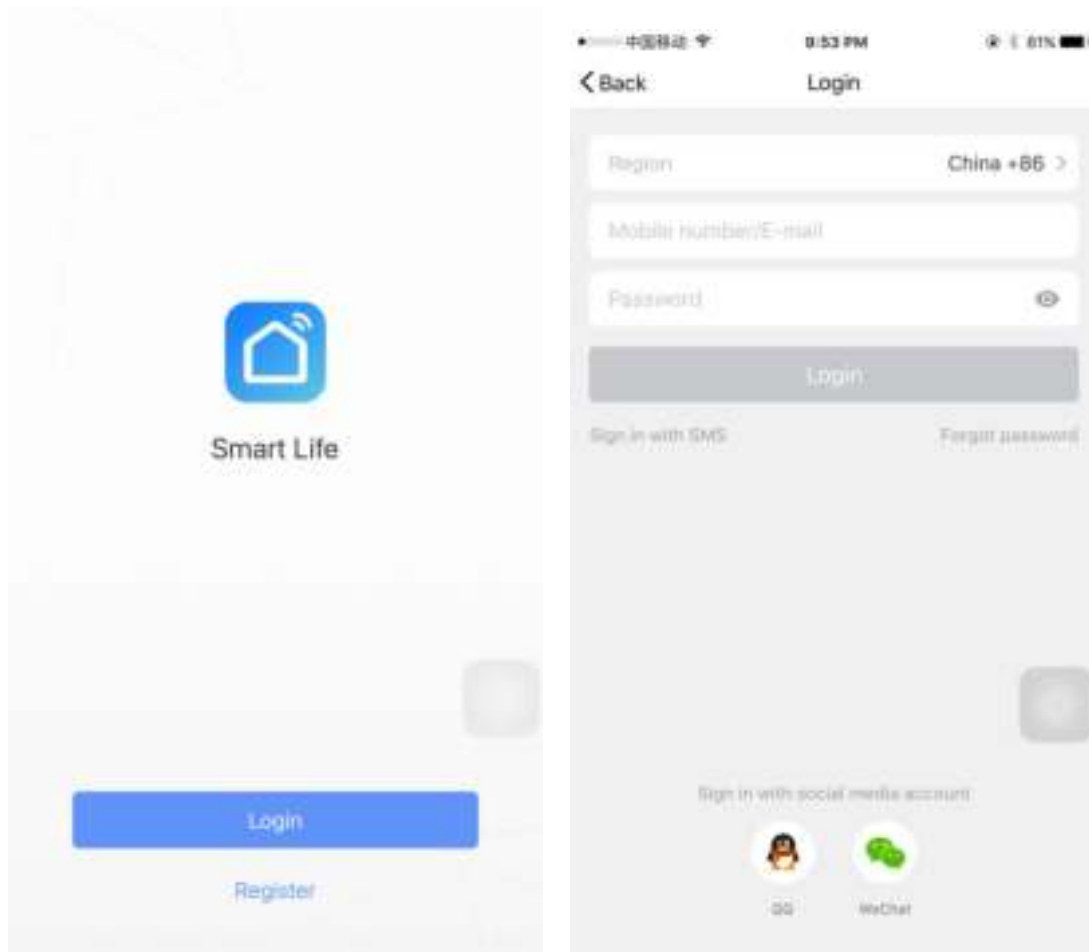
IOS & Android System

Setting Smart Life APP

How to Register and Login:

Download or Scan the QR Code and install Smart Life App.

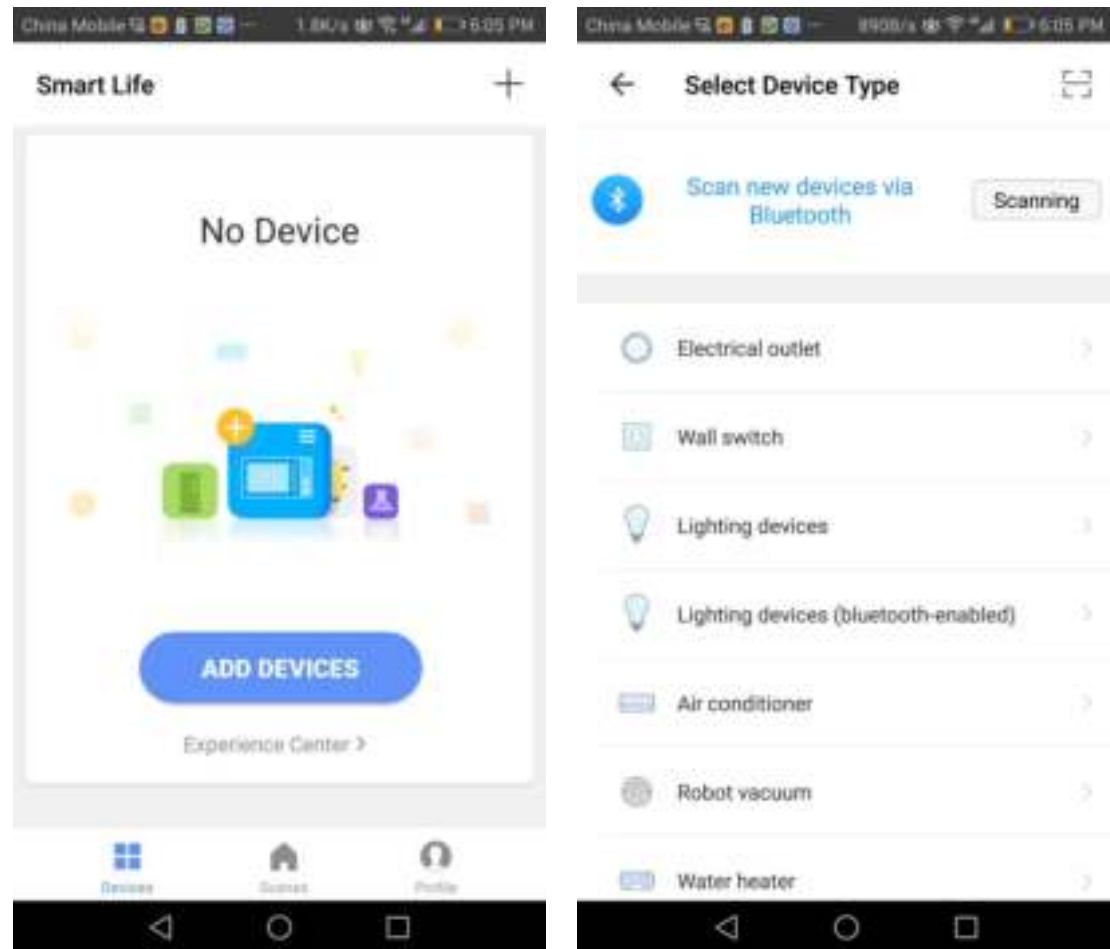
Once Download or Scan the QR Code, the App will ask you to register your device.



Enter your phone number or email which you prefer and select the country you live in. If phone numbers selected you will receive a text with a registration code, if you choose email you should create a password then.

How to Adding a New Device in Quick Connection

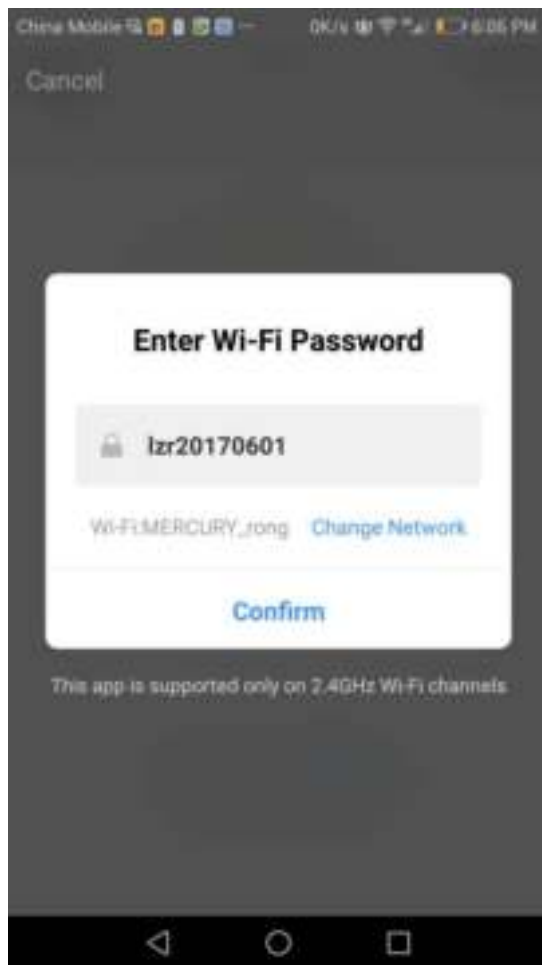
1. Connect the switch with power
2. Press the power button on the switch 6-10 seconds until the red light blinks quickly to reset the switch.
3. Open App and tap “+” and select “wall switch” to add.



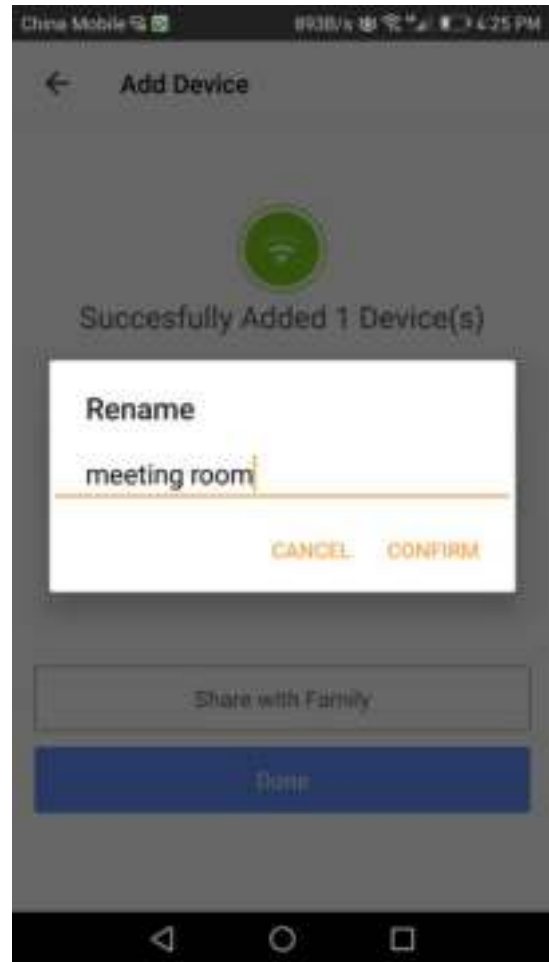
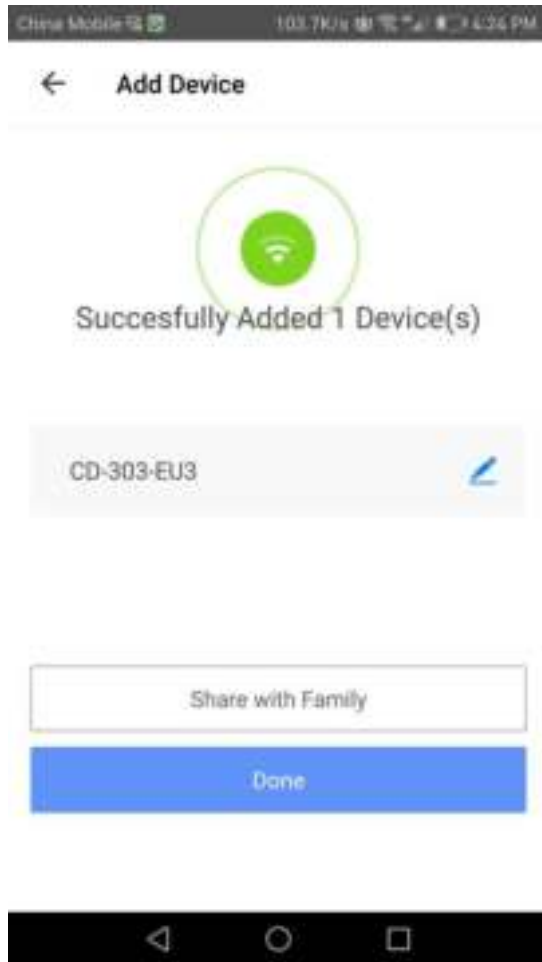
4. Please make sure power on the device and blue light (Wi-Fi indicator) rapidly blinks as 2 time per second.



5. Select Wi-Fi network, input Wi-Fi password, and confirm that will prompt connection.



6. Once connected the app will prompt the connection.
7. Rename the device such as "Bedroom" , "Kitchen" or "meeting room" and so on,
(Attention: The name should use numeric and letters, don't use special symbols.)

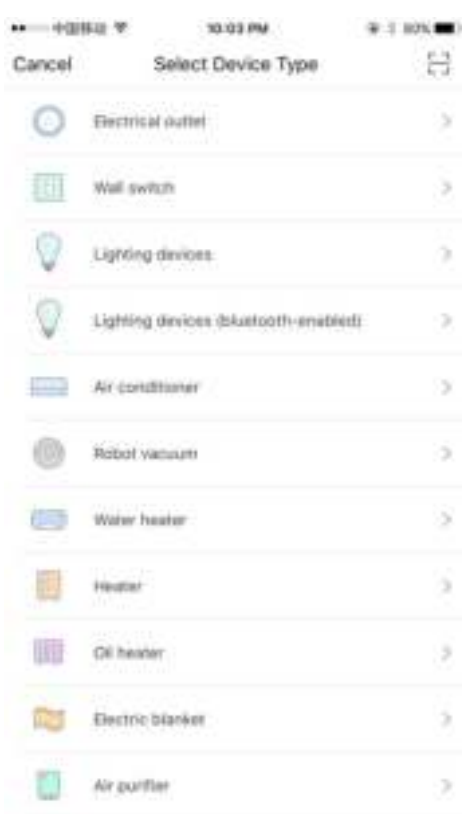
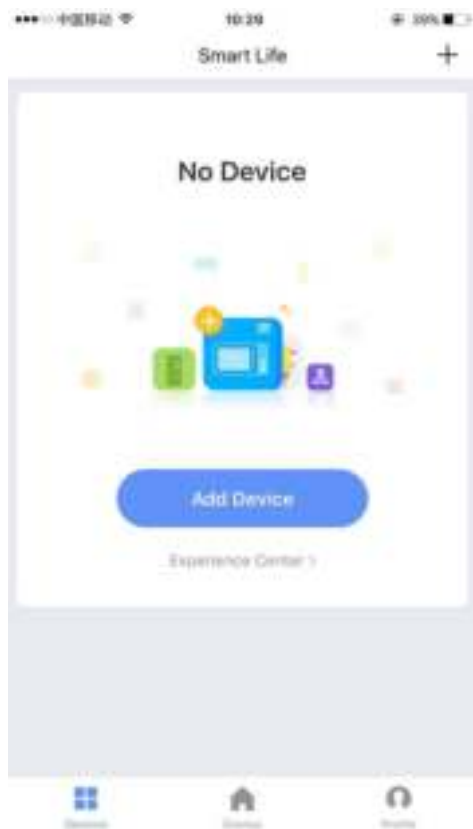


8. Then tap "Confirm", then tap "Done" under Rename, if you want to share, choose "Share with Family".



Adding a New Device in AP Mode

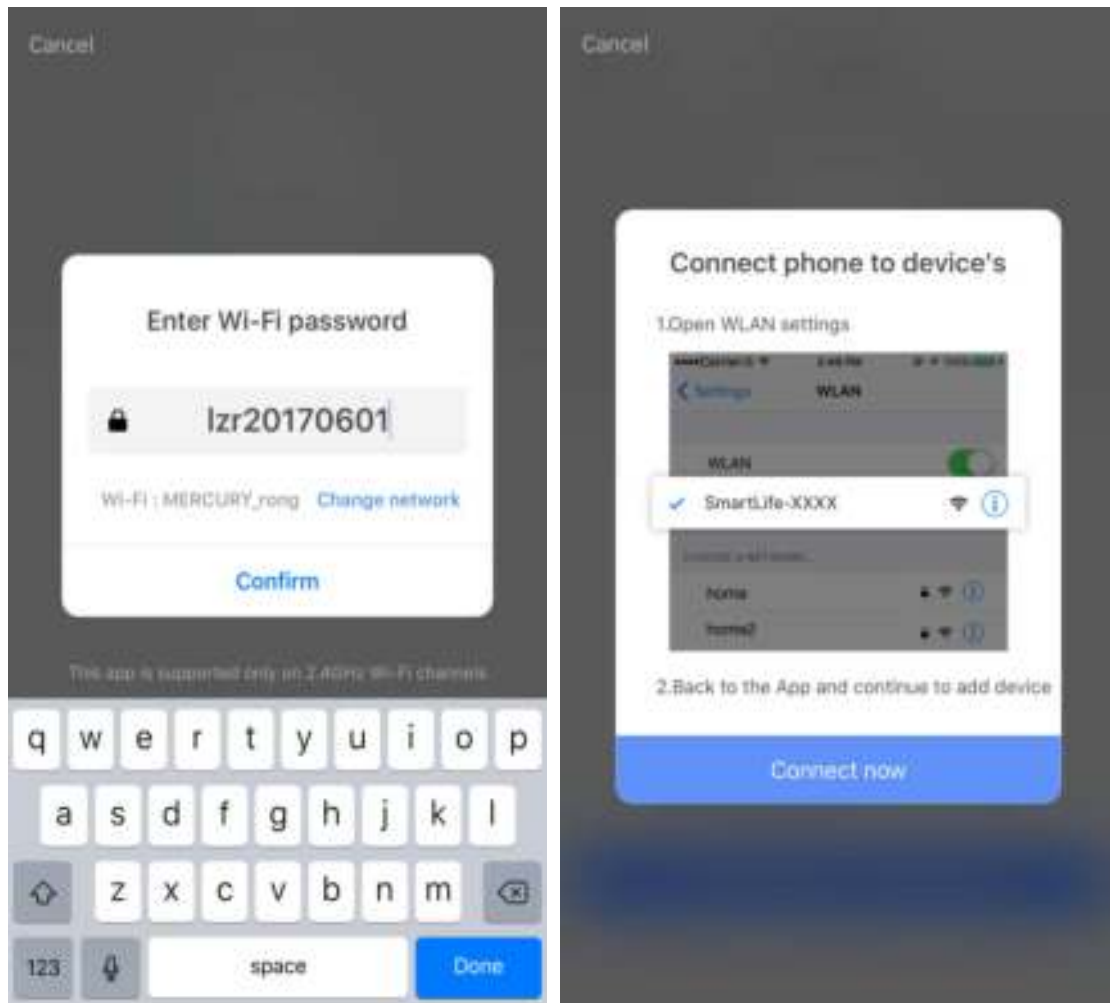
1. Press the power button on the switch until Wi-Fi indicator slowly blinks (1 times in 3 seconds).
2. Press “+” in the main menu of APP and select “wall switch” to add



3. Tap AP Mode “ and “Confirm indicator slowly blink”



4. Select Wi-Fi and input Wi-Fi password, press “Confirm”.



5. Press "Connect Now"

6. To go WLAN setting in your smart phone and select the "SmartLife XXX" for your Wifi, no need to input password once you select the "SmartLifeXXX" (You can directly to connect it if your OS is Android).



7. Go back to APP, press "Connect" switch "SmartLife-XXX", and confirm device.

Cancel

Connecting now



Make sure your phone and device are as close to your router as possible.

- ⌘ Searching for device
- ⌘ Registering device to the cloud
- ⌘ Initializing your device

Cancel

Connecting now



Make sure your phone and device are as close to your router as possible.

- ✓ Searching for device
- ✓ Registering device to the cloud
- ✓ Initializing your device