

## Matters needing attention

### ⚠ Please follow as below, to avoid danger

- Please don't use sinner, benzene, wax to wash, in order to avoid damages such as color changes or paint falls off, and thus caused rust or corrosion.
- When change the gas, please open the window or ventilator, in order to avoid headache or carbon monoxide poisoning.
- During or after cooking, as the cooker is hot, it's forbid to touch the bearing tray, pan support and burner by hand or any part of body, in order to avoid scald.
- Avoid fire or other damages due to abnormal start. Any abnormal occurs, please consult our after-sales service center.
- When use the plug valve(ignition, flame-out, fire regulation), please don't put hand on the installed cooker and tableware, in order to avoid scald or other damages.
- It's should be checked if the burner is on fire after ignition. If not, it will lead to explosion when re-ignition due to gas leakage.
- During operation, ensure the cooker is placed at least 70cm away from power source and household appliances, in order to avoid noise or misuse.
- When change the gas tank, tank cover must be closed, in order to avoid the cooker's abnormal start and lead to fire or other damages.
- Please don't move the cooker when it's under ignition or cooking, in order to avoid fire or scald.
- In case of gas leakage, please stop use immediately, turn the plug valve to flame-out position, open windows and immediately clear fire around. Be sure not to touch power switch, electric appliances, in order to avoid fire, explosion or other damages.

### Kindly remind: during use shall observe and check at any time if the burner is on fire. If the flame is small, please pay attention to not be extinguished.

- Take out gas tank from cooker after using, keep away from smoke and fire and direct sunlight, place on well ventilated areas. It's forbidden to be stored in refrigerator, in order to avoid fire or explosion.
- Used gas tank is not allowed for repeated filling. It must be drilled two holes and separate from rubbish, in order to avoid fire or explosion.
- Abandoned cooker should be handled according to specific procedure, in order to avoid fire or explosion.
- Don't place inflammable materials, items with poor heat resistance or obstruct the ventilation (tablecloth, plastic cloth) under cooker.
- It's forbidden to directly use cookers on tables that are coated or painted with poor heat resistance material, in order to avoid heat at the bottom and cause fire or other damages. Should place flame retardant under the cooker.

## Failure reasons and solutions

PHENOMENON	REASON	SOLUTION	PHENOMENON	REASON	SOLUTION
Ignition failure	Electrode contamination, moisture	Remove contamination, moisture	Flame is not stable	Burner flame entrance is blocked	Spot check, repair
	Gas tank lack of gas	Change to new gas tank		Air intake port is blocked	Spot check, repair
	Burner firing port is blocked	Spot check, repair	Flame is weak	Gas tank lack of gas	Change to new gas tank
	Ignition is not smooth	Take correct ignition procedure		Burner flame entrance is blocked	Spot check, repair
	Air intake nozzle blocked	Spot check, repair		Air intake port is blocked	Spot check, repair
Burner flame is not transmitted	Plug valve failure	Spot check, repair	With odour	Plug valve failure	Spot check, repair
	Ignition device failure	Spot check, repair		Gas tank installed incorrectly	Put gas tank to correct position
	Gas tank installed incorrectly	Put gas tank to correct position	Flameout during using	Gas tank installed incorrectly	Put gas tank to correct position
Gas tank lack of gas	Spot check, repair	Overpressure cut-off device starts		Trouble shooting and restart	
With yellow smoke	Burner flame entrance is blocked	Spot check, repair	Unable to install gas tank	Plug valve failure	Spot check, repair
	Air intake port is blocked	Spot check, repair		Cooker is deformed	Spot check, repair
Flame is uneven	Burner flame entrance is blocked	Spot check, repair	Flameout failure	Plug valve failure	Spot check, repair
	Air intake port is blocked	Spot check, repair		Overpressure cut-off device starts	Trouble shooting and restart

## Quality Assurance Certificate

### ⚠ Please fill in certificate before selling.

Model Name	Portable Butane Cooker	Warranty Period	1 year
Model Number	BDZ-155-A	Agency	
Assurance Number		Address&trade name	
Purchasing date	Year    Month    Day	Phone	

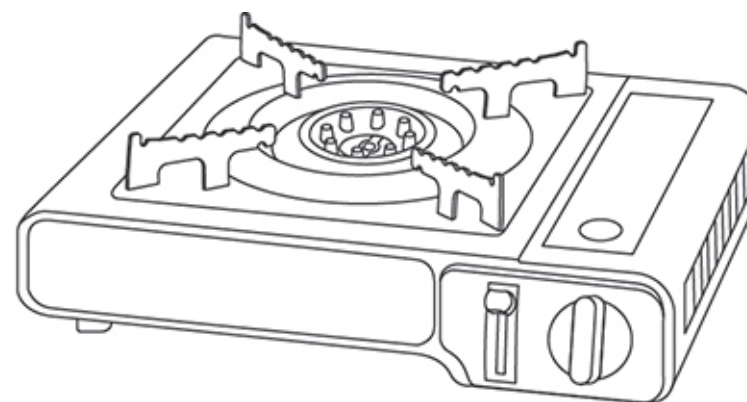
- ① In case of product abnormal or complaints, please contact selling store or our company's after-sales service center for repair.
- ② If it's required for compensation of damages, please submit quality assurance certificate and invoice; when requiring compensation, it's required to provide supporting data.
- ③ For products with improper use by consumers or beyond warranty period, we are not liable for indemnity.
- ④ For products under normal use condition, the factory provides free maintenance one year from the date of purchase.
- ⑤ The product's safe service life is two year (from the date of purchase). Please don't use beyond deadline, in case of safety hazards.

# Borvat

CE

# PORTABLE GAS STOVE

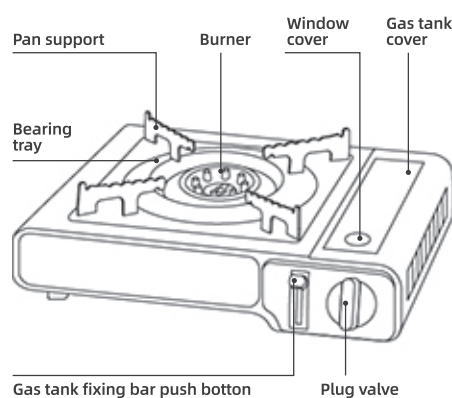
## User Guide Manual



**New upgrade**

Thank you very much for buying this product.  
Please read the manual carefully before using it and keep it for future reference.

## Product in production



### Automatic Tank Ejection Device

When the plug valve is rotated to the flameout position, the gas tank fixing rod automatically springs up. The flow of gas will be cut off automatically and the fire will go out.

### Overpressure Cut-off Device

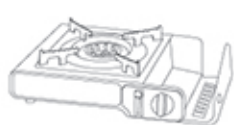
When the pressure in the tank exceeds the reference pressure (5-7kgf/cm<sup>2</sup>) due to overheating, the tank will automatically fall off, the flow of gas will be cut off and the fire will go out.

### Measures to be taken when overpressure cut-off device is started

- ① Turn the plug valve to the flameout position, and then take out the gas tank from the cooker;
- ② After carefully reading the matters needing attention for cooking utensils, eliminate the reasons;
- ③ Put new gas tank into the cooker (if there is no new gas tank, put the removed gas tank into the cooker after cooling with cold water; if not cooled, the gas tank will fall off);
- ④ Rotate the plug valve to the "ignition" position and it can be used normally.

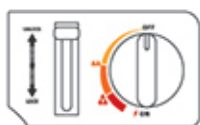
## Cooker Usage method

Step 1



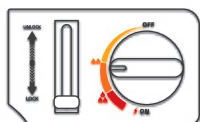
Place the cooker in a hard, flat position, then turn the four corners of the pot up and open the gas tank cover;

### ① Ready to start



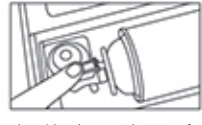
- ① Turn the plug valve to the "flameout" position
- ② Put the gas tank fixed lever button in the "tank return" position
- ③ If the plug valve is not in the "flameout" position, the fixed rod of the gas tank will not start, so the device cannot be installed.

### ④ Fire control



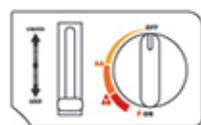
Turn the plug valve between "ignition" and "flameout" to adjust the size of the flame.

Step 2



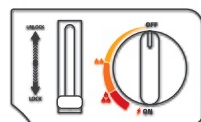
Lift the tank guide plate on the top of the regulator with your left hand, so that the gap on the tank is in a straight line with the tank guide plate, and then cover the tank cap;

### ② Press the gas tank fixing lever button



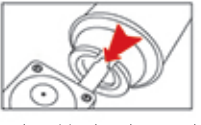
Put the gas tank in, press the gas tank fixing lever button, and press to the position of the upper tank.

### ⑤ Automatic tank ejection device starts (flameout)



When the plug valve turns clockwise to the "flameout" position, the air circuit is cut off and the valve will flameout automatically.

Step 3



Press the tank retaining lever button and clamp the tank. The gap on the tank is in a straight line with the guide plate of the tank.

### ③ Ignition



Slowly turn the plug valve counter-clockwise until you hear a "pop" sound. Repeat this step if the fire is not lit.

### ⑥ Completely shut down



After use, keep the gas tank and cooker separately.

## Caution High Temperature

⚠ **WARNING:** It's prohibited of below operation, lest cause gas tank overheat and explode, or lead to overpressure cut-off device unable to be started.

<p>① It's forbidden that flame blow to one side of gas</p> <p>Cause gas tank overheat, with explosion risk.</p>	<p>⑤ Don't use appliance of stone, casseroles or</p> <p>As these materials have heat conductivity, it will cause internal temperature of cooker increased, will lead to gas tank overheat and with explosion risk.</p>
<p>② It's absolutely forbidden to use 2pcs or more in parallel.</p> <p>Due to the radiant heat, cause the internal temperature of cooker increase, which will lead to gas tank overheat and with explosion risk.</p>	<p>⑥ Don't put empty cookware on the cooker to heat.</p> <p>Heating empty cookware will produce high heat, which will cause internal temperature of cooker increased rapidly, and lead to gas tank overheat and with explosion risk.</p>
<p>③ It's forbidden to use iron plate, cooker etc that are bigger than gas tank cover.</p> <p>If the cooker is bigger than gas tank cover, lead to gas tank overheat and with explosion risk.</p>	<p>⑦ Don't use iron net, ceramic plate, stone plate covered with tin foil paper.</p> <p>It's forbidden to roast squid, tomato. Due to the radiant heat, cause the internal temperature of cooker increase, which will lead to gas tank overheat and with explosion risk.</p>
<p>④ It's forbidden to use near flame or flammable materials.</p> <p>Please use with distance at least 2 meters away, as heat radiant will lead to gas tank overheat and with explosion risk.</p>	<p>⑧ It's forbidden to use on the seaside, cobblestone, sand bench with direct sunshine.</p> <p>Heat source will lead to gas tank overheat and with explosion risk.</p>

## Disabled location

⚠ **Warning:** Below locations are easily cause fire danger, please don't use nearby, lest cause accident.

<p>● Near flammable materials</p> <p>Far away from flammable materials such as fuel, lamp-oil, combustion gas, in order to avoid risks of burning and explosion.</p>	<p>● Away from heat resource or windy areas</p> <p>It will lead to cooker overheat and with risk of explosion; the wind blows fire to the cooker's surface or the table, caused fire.</p>	<p>● Must flame out before go out</p> <p>Should not leave or sleep during using, lest the cooker is dried and overheat, thus cause damages or fire.</p>	<p>● Keep certain distance from flammable wall</p> <p>During using, please keep at least 20cm away from flammable wall, lest to cause fire.</p>
<p>● It's dangerous for other uses</p> <p>It's not allowed for other uses, lest to cause fire or other damages.</p>	<p>● Out of children's reach</p> <p>Please prevent children to approach, touch or use, lest to cause scald or fire.</p>	<p>● Areas with objects falling off</p> <p>In order to avoid the risk of objects falling off and caused cookers fall down and lead to the risk of scald.</p>	<p>● Areas with curtain</p> <p>Curtains are flammable. It's forbidden to use nearby, lest get burned and the risk of fire.</p>