

## 4 Continue in Energy-app

Ga verder in de Energy-app - Weiter in der Energy-App - Fortsätt i Energy-appen



setup.homewizard.com

## Press to check status

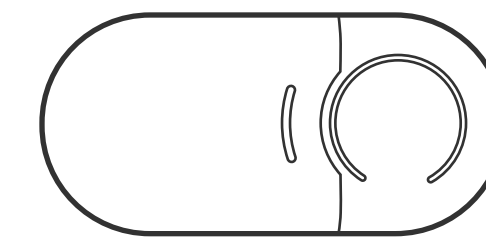
Druk om status te zien - Drücken, um den Status zu überprüfen - Tryck för att se status

- Ok
- Reset
- Pair
- No Wi-Fi

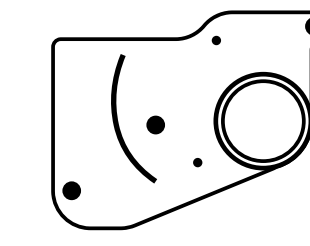


## Specifications

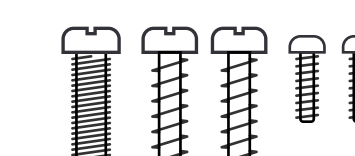
Type	HWE-WTR-13
Connection	Wi-Fi 2.4Ghz
Power cable	USB-C (realtime data)
Power battery	2xCR123A - ±1 year (4x/day data)
Usage	Indoor
Resolution	0,3L
Status ring	RGB



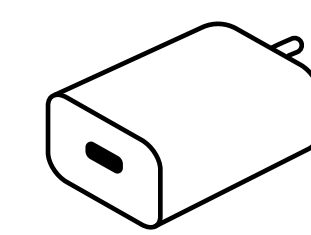
Watermeter



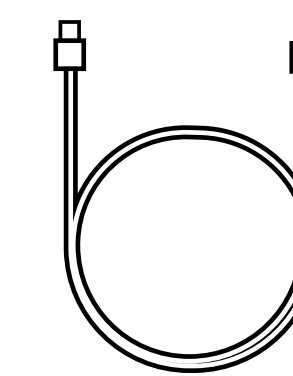
Adapter



Screws



Power adapter



USB-C cable (3m)

www.homewizard.com

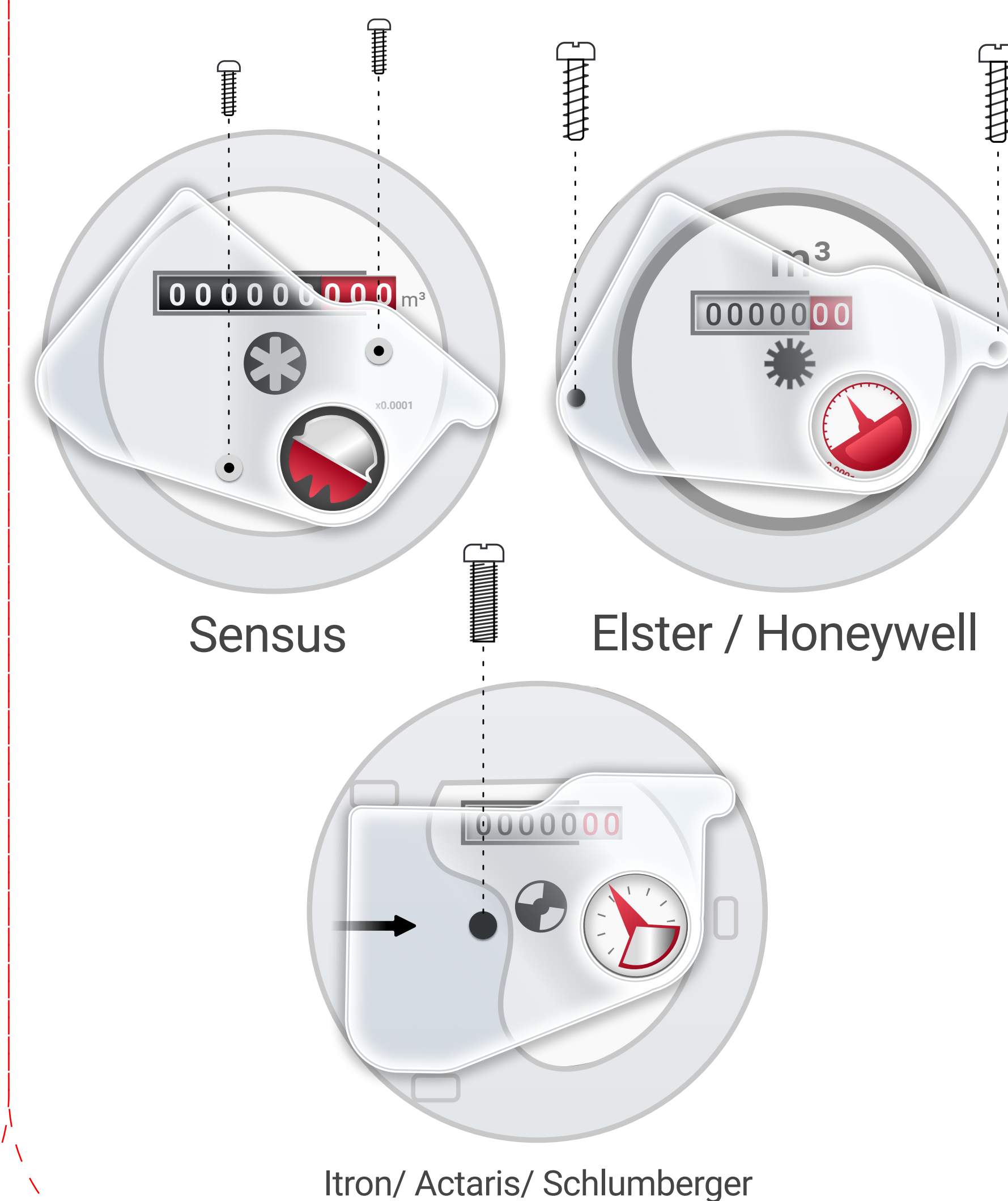


homewizard

Quick start

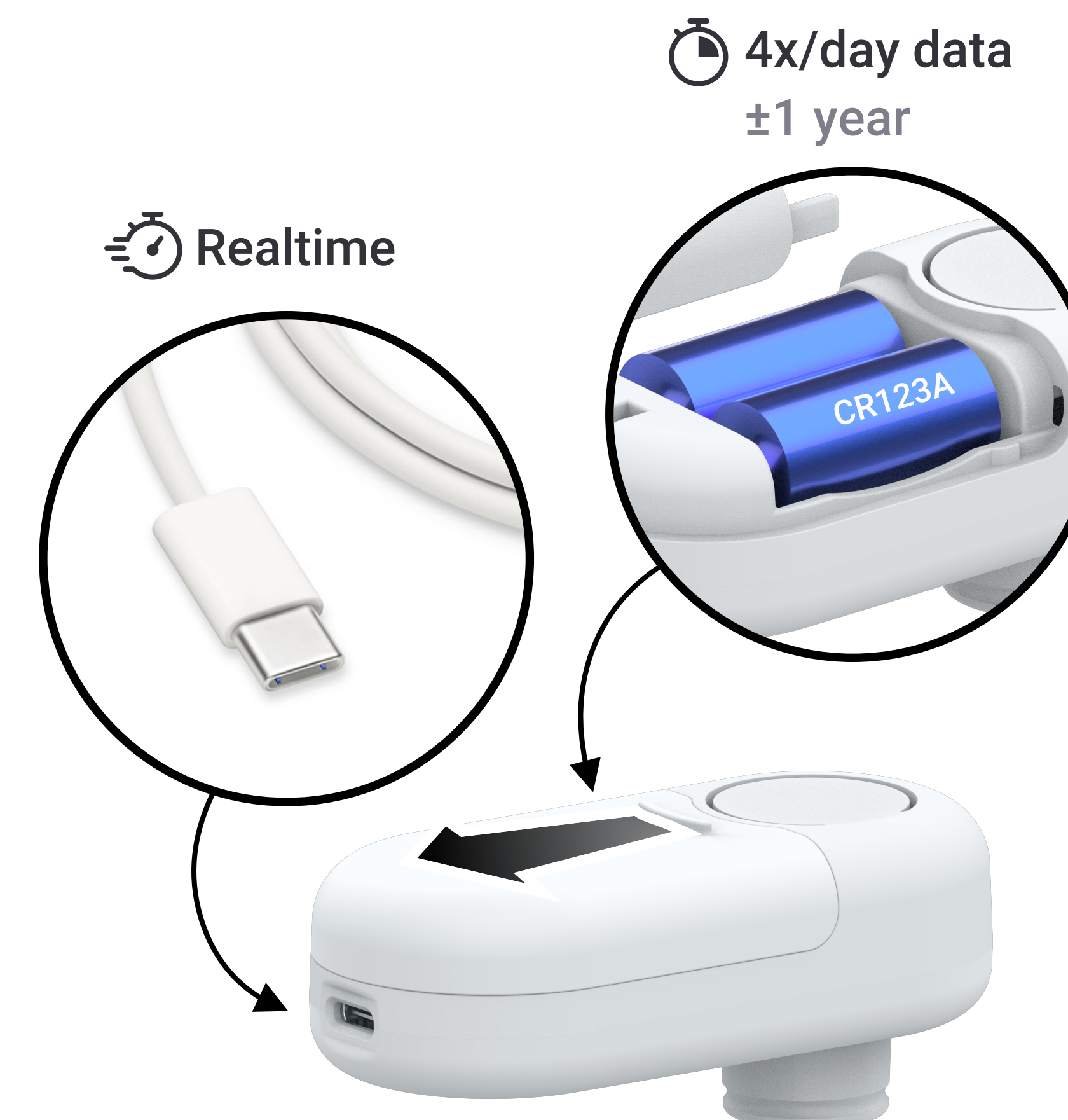
## 1 Install adapter

Adapter installeren - Adapter installieren - Installera adaptorn



## 2 Power by cable or battery

Plaats kabel of batterijen - Kabel oder Batterien platzieren - Placera kabel eller batterier



## 3 Insert watermeter

Plaats Watermeter - Watermeter einsetzen - Sätt in Watermeter

