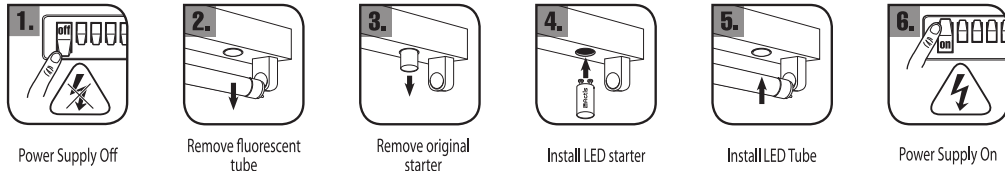


Linear T8 LED Tube



Quick Installation Guide:

- Always switch off the power supply before installation.
- Tubes are intended for use in luminaires with conventional magnetic ballast.
- Before using LED Tubes in luminaires with High Frequency Electronic ballasts, please consult with qualified electrician.
- LED Tubes operate in temperatures from -10°C to +45°C under dry conditions or in luminaires that provide correct protection.
- Tubes are not dimmable.
- LED Tubes are designed to fit IEC Complaint G13 bi-pin lamp holders.
- ALL LED tubes must be installed by a professional electrician.
- Do not change any components of the LED Tubes.

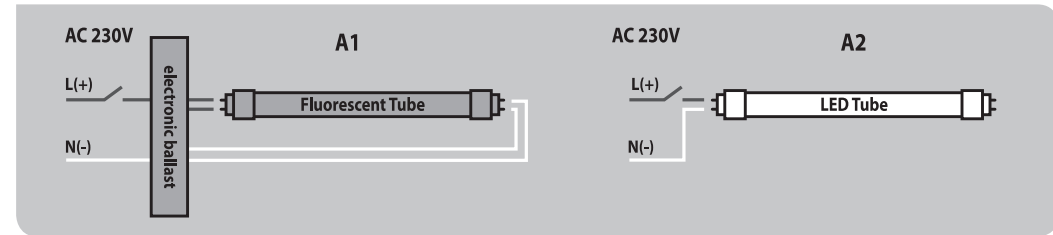
LED Tubes wiring instructions

General terms and conditions

- Please read our installation instruction for proper installation.
- LED Tubes are designed for use in luminaires with magnetic ballast, where no modification is needed for the inside of luminaire.
- LED Tubes are not suited for emergency luminaires designed for double-capped fluorescent lamp(s).
- LED Tubes are NOT dimmable.
- These instructions are for general installation and therefore do not accept any liability for any works on the luminaires.
- The power supply should always be switched off before installation of LED.
- Never install wires over sharp edges in the luminaire.
- Class II luminaires must keep the same level and strength of insulation after conversion.
- Connections to ground (earth) may not be removed in the luminaire.
- The IP rating of the luminaire may not be degraded after conversion.
- Any direct or indirect damages, that may occur during installation that is not performed, according to this guide or by a qualified electrician is not under the liability.
- Never change the structure of the LED Tubes.
- Any luminaire converted to LED should be marked by a stamp, indicating that it has been converted to LED Tubes.
- The overall energy efficiency and light distribution is determined by the design of the installation.
- Incorrect installation may cause failure and other problems with the installation.
- Keep this guide for future maintenance.

Installation instructions:

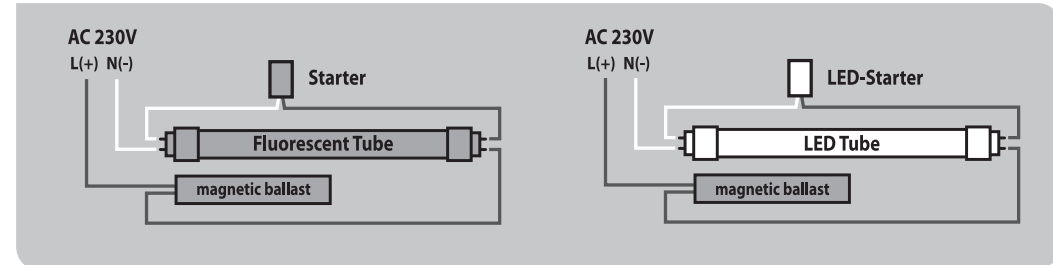
- 1) Turn off the electricity supply before installation.
- 2) For refitting old fluorescent lamp with a single-capped LED tube, please re-connect your wire as in the following diagram.



- 3) For diagram A1 loop with electronic ballast, please re-wire.
- 4) Check wiring; if connecting well, install the LED tube in the right way. LED tube works.

Wiring of a single circuit luminaire with magnetic ballast

It is not necessary to make any change to wiring. Starter must be replaced with the LED starter provided.



If the luminaire is equipped with a compensating capacitor, then it shall be removed from the circuit. Make sure that the luminaire is marked, stating that it has been converted to LCD.

Wiring of a double circuit luminaire with magnetic ballast

It is not necessary to make any change to wiring. Starter must be replaced with the LED starter provided.

