

DMQ
Q13310 8 171888516234201



Texture White
 DMQ Trimless Moon GU10 White

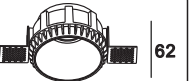
165
 100mm



DMQ Art.nr.: **Q13310**
 GU10 Max.50W
 220-240V/50-60Hz

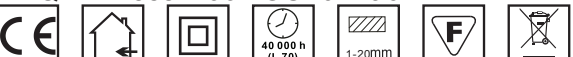


DMQ
Q13522 8 7188851624878



Texture Black
 DMQ Trimless Moon GU10 Black

165
 100mm



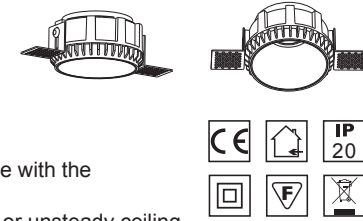
DMQ Art.nr.: **Q13522**
 GU10 Max.50W
 220-240V/50-60Hz



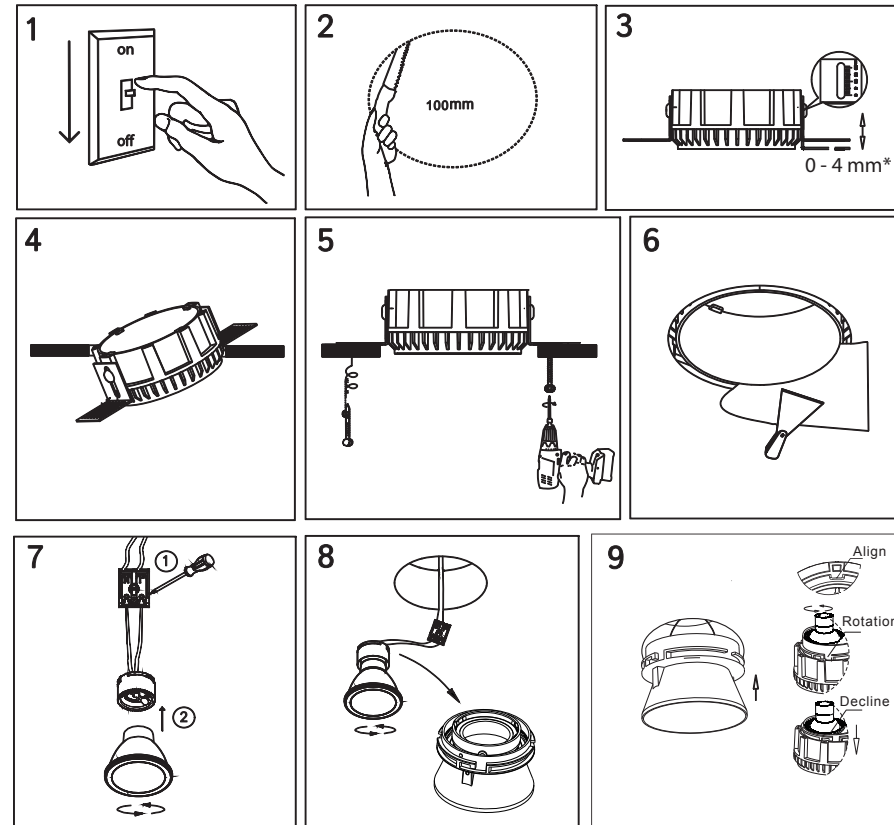
DMQ

Instruction Manual DMQ trimless Moon series

SKU: Q13310 (White)
 Q13522 (Black)
 GU10 MAX 50W
 220-240V / 50-60Hz
 Cutout: 100mm



1. The installation must be done in strict accordance with the instruction and local guidelines
2. Please don't install the lighting in easily damage or unsteady ceiling
3. Please make sure the main power is switched off before installation or when changing bulb.
4. Make sure there is no component loose



* When plastering the ceiling after installation use 2-4 mm stick out the ceiling. This depends on the plaster thickness. Please discuss with your plasterer. For example, when plaster will be 3mm thick, the trimless frame should stick out 3mm. After plaster it will be 0mm (frame / ceiling will be flat surface.)

* If the ceiling is already plastered, stick out 0mm and fill the gap between the ceiling and frame with fast-plaster.

If you have questions about installation feel free to contact us, we will assist you!