

973

150

325

524.99

257



Scan the code or go to [www.philips.com/expresspump](http://www.philips.com/expresspump) to receive exclusive offers and access to expressing tips and tricks.



### Natural motion technology

Inspired by baby's unique combination of suckling and massage, natural motion technology naturally stimulates milk flow.

- Proven effectiveness<sup>1</sup>
- One-piece silicone cushion flexes and adapts to you<sup>2</sup>
- Just like baby, the pump seamlessly adjusts from stimulation mode to expression mode

<sup>1</sup>Fits 99.98% of nipples, up to 30 mm. Data on file, Mar 2020.

Fits **99.98%** of all nipple sizes<sup>3</sup>

### Our most effective pump to date<sup>1</sup>

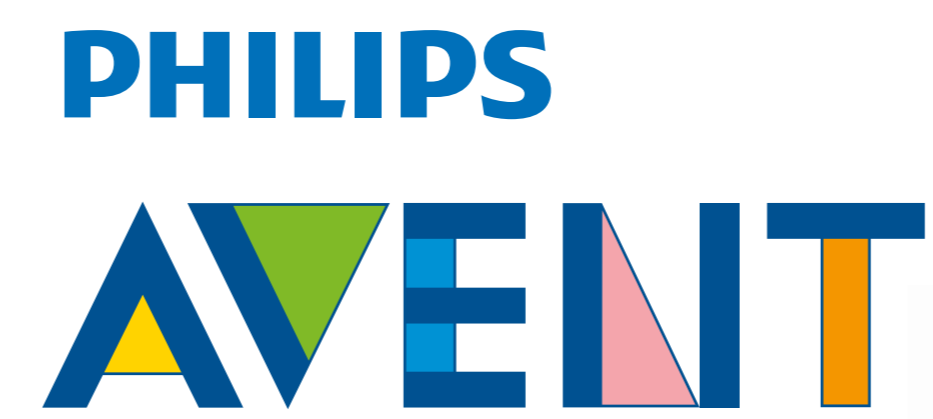
**Personalise to your needs**  
Customise your pumping style to the right pace for you. Choose from the 8 stimulation and 16 expression levels

**Lightweight and compact**  
The lightweight, compact design and the tailor-made bag and insulation pouch make it easy to carry the pump with you. For corded use only

**Save your favourite settings**  
With the memory function, your preferred pumping settings are automatically saved

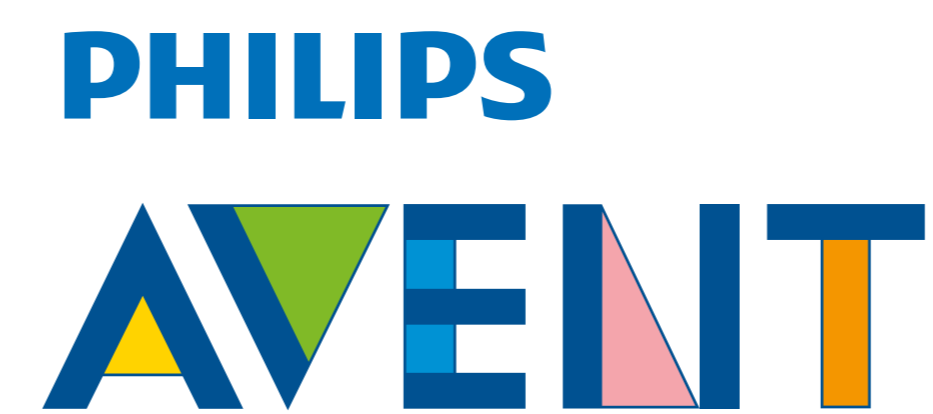
#### This pack includes:

- 2x Pump body with pair of cushions
- 1x Motor unit
- 1x Power adapter
- 2x Sealing discs
- 2x Natural bottles (125 ml / 4 oz) and newborn teats
- 1x Set of 2 disposable breast pads
- 1x Travel bag
- 1x Insulation pouch



Double electric breast pump

No. 1 No. 1 brand recommended by mums worldwide<sup>2</sup>



Double electric breast pump

### Natural motion technology

Powerfully combines suction and nipple stimulation, for a quicker milk flow<sup>1</sup>

Includes travel bag and pouch

0% BPA<sup>3</sup>

### Inspired by baby, effective for mum



Few parts, easy to set up and clean. Closed expression system for hygiene – no milk in the tubing



8 stimulation + 16 expression levels, for a personalised experience



Designed for upright pumping, thanks to the no-lean forward design



Quiet motor for a discreet experience, anywhere you are



Memory function saves your favourite pumping style

AU: 1300 363 391  
NZ: 0800 658 224  
[www.philips.com/avent](http://www.philips.com/avent)



1) Based on milk flow initiation time (time to Milk Ejection Reflex - MER) results from trial with 20 participants (Netherlands, 2019) compared to time to MER results for other Philips predecessor pump technology from Feasibility study with 9 participants (Netherlands, 2018).  
 2) Based on December 2018 GemSeek online satisfaction survey conducted among more than 8,000 female users of childcare brands and products in UK, USA, France, Germany, Italy, India, Indonesia, Russia, Brazil and China.  
 3) Only associated with the bottles, and other parts that come into contact with breast milk. Following EU regulation, 10/2011. Instructions included.

FDLM Project name / MLD project number: 0000006411

12NC description: FBOX SCF397/11 TWIN electric BP ME ANZ

Cluster: ANZ

Languages: EN

3000 038 18121

SCF Code: SCF397/11

88 code: 8840 397 11530

EAN / UIC Barcode: 8710102989020

FDZ code (DE only):

Philips diecut reference: 3000 038 18151\_20190903

Pack dimensions: W 325 mm x H 257 mm x D 150 mm

Barcode scale: 100%

Height of shortest bar: 22.85mm

Bar Width Reduction: 0 µm – printer to apply appropriate settings

Colour standard reference: SCF398-11\_20190919

CMYK colour profile: FCGRA\_39

Version number: 6R

Revision date: 06 Apr 2020 - 14:24:04

Date of 1st proof: 05 November 2019

Point 6 operator: CH

CRM email: [konstantina.soyou@philips.com](mailto:konstantina.soyou@philips.com)

IPU/L/CM PM email: [andrea.san@philips.com](mailto:andrea.san@philips.com)

Point 6 job number: 16606

Point 6 file name: 16606\_SCF397/11\_ME\_DESP\_ANZ\_18121\_6R

FSC label language: EN

Registered

Countries of distribution: Australia and New Zealand

Colours:

Varnish: Measure @ 60° ISO 2813

> 50 Gloss Units

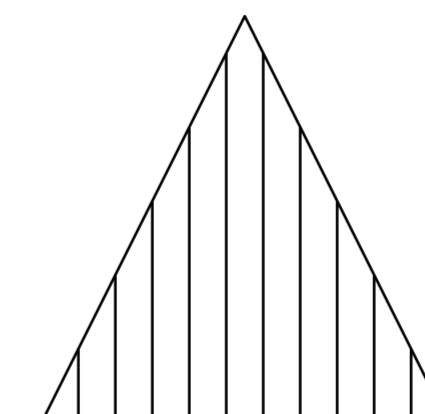
Gloss Aqueous Varnish

Finishing:

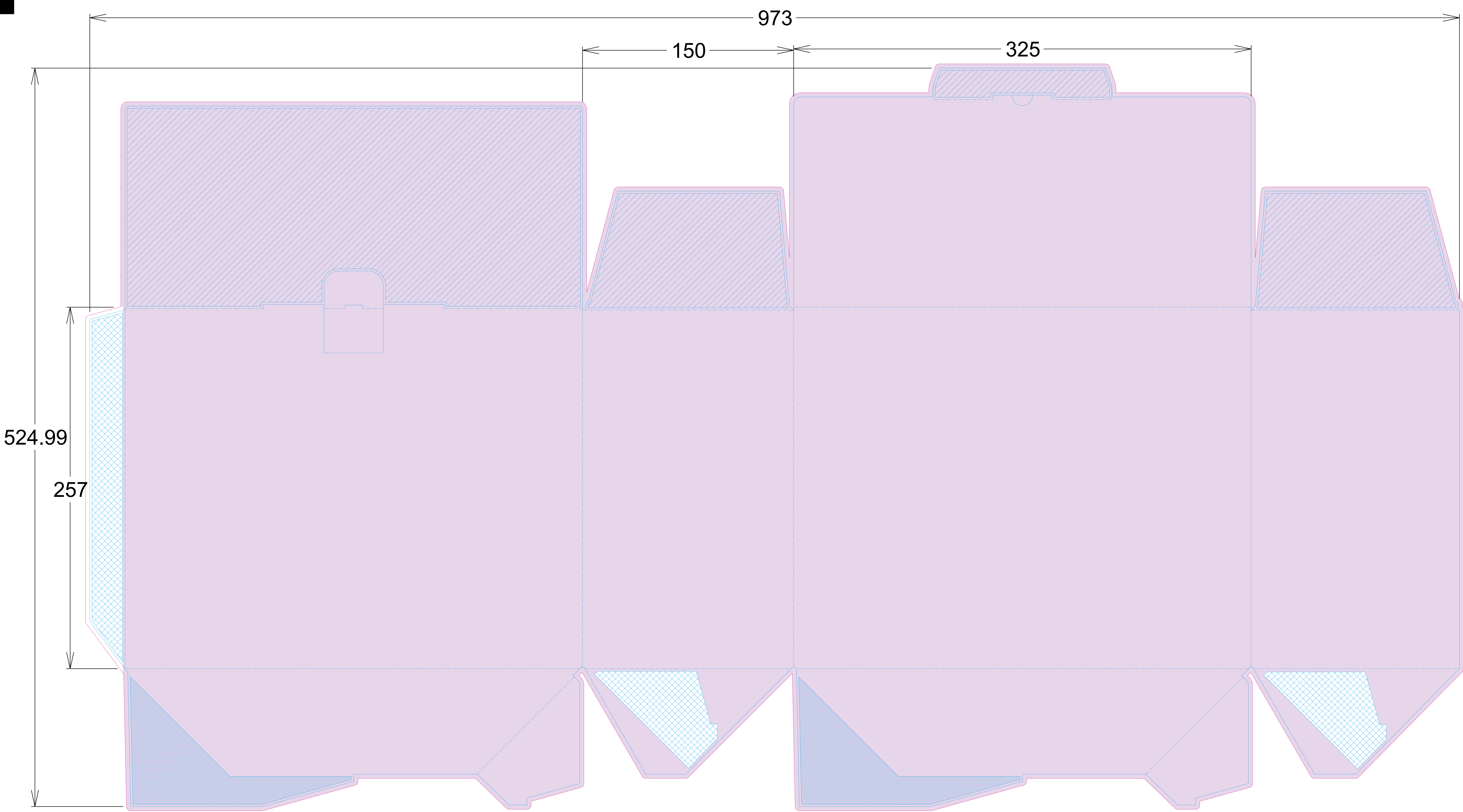
FSC label Full Portrait 17mm

**LOW RESOLUTION – NOT FOR PRINT!**

View on printed side Die cut on printed side		TOLERANCE DIE CUT TO PRINTING DIMENSION ± 1 mm [0.04 Inch]	MATCHING LEGEND	
UNIT mm [inch]	MATERIAL Corrugated Cardboard E-Flute + Virgin top liner	Glued area Non visible area For a detailed spec, refer to the Bill of Materials or contact author		
PAGE SIZE A0	SCALE 1:1	TREATMENT Printed, folded, glued	DNUMBER D000294476	DATE (DD Mmm YYYY) 03 Sep 2019
PHILIPS		TITLE MASTER FBOX ELECTRIC BP X2	12NC 300003818151	
© ROYAL PHILIPS N.V.		NAME Pia Donkers	STATUS CONCEPT	
EMAIL <a href="mailto:dl_mcc_ise_packaging@philips.com">dl_mcc_ise_packaging@philips.com</a>		SH_110	SOFTWARE: ARTIOS CAD 14	PLATFORM: MICROSOFT WINDOWS







<b>POINT</b> Point 6 Design Ltd The Lion House 253 Kilburn Lane London W5D 4BQ United Kingdom www.point6.co.uk +44 (0)20 8962 5890	FDLM Project name / MLD project number: 0000006411 12NC description: FBOX SCF397/11 TWIN electric BP ME ANZ Cluster: ANZ Language: EN Packaging 12NC: 3000 038 18121 Previous 12NC: N/A SCF Code: SCF397/11 88 code: 8840 397 11530 EAN / UPI Barcode: 8710102909020 FDN code (DE only):	Philips diecut reference: 3000 038 18151_20190903 Pack dimensions: W 325 mm x H 257 mm x D 150 mm Barcode scale: 100% Height of shortest bar: 22.65mm Bar Width Reduction: 0 µm – printer to apply appropriate settings <b>FSC INFORMATION</b> FSC label language: EN ® or ™ FSC logo: Registered Countries of distribution: Australia and New Zealand	<b>MASTER 6R</b> Version number: 06 Apr 2020 - 14:24:04 Revision date: Date of 1st proof: 05 November 2019 Point 6 operator: CH CRM email: konstantina.toyos@philips.com IP/L/CM PM email: andrea.wel_59@philips.com Point 6 job number: 16606 Point 6 file name: 16606_SCF397/11_ME_DESP_ANZ_18121_6R Colour standard reference: SCF398-11_20190919 CMYK colour profile: FOGRA 39
---	---	--	--

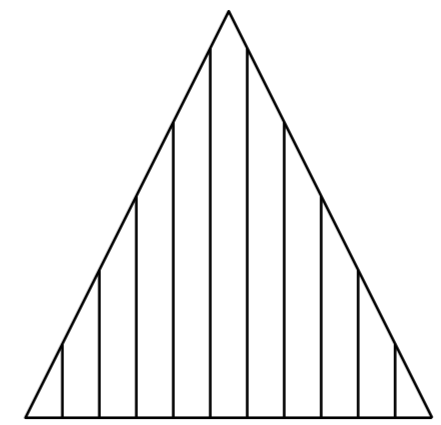
Colours:

Varnish: Measure @ 60° ISO 2813  
Gloss Units: > 50  
Gloss Aqueous Varnish

Finishing:

FSC label: Full Portrait 17mm

**LOW RESOLUTION  
– NOT FOR PRINT!**



View on printed side Die cut on printed side		TOLERANCE DIE CUT TO PRINTING DIMENSION ± 1 mm [0.04 Inch]	HATCHING LEGEND Glued area Non visible area Non visible area when box is closed	
UNIT mm [Inch]	MATERIAL Corrugated Cardboard E-Flute + Virgin top liner For a detailed spec, refer to the Bill of Materials or contact author	DNUMBER D000294476	DATE (DD Mmm YYYY) 03 Sep 2019	
PAGE SIZE A0	SCALE 1:1	TREATMENT Printed, folded, glued	REVISION B	12NC 300003818151
<b>PHILIPS</b>		TITLE MASTER FBOX ELECTRIC BP X2	STATUS <input type="checkbox"/> CONCEPT <input checked="" type="checkbox"/> PRODUCTION/SERVICE	
© ROYAL PHILIPS N.V. NAME: Pia Donkers EMAIL: dl_MCC_ISE_PACKAGING@philips.com		SH: 110	SOFTWARE: ARTIOS CAD 14	PLATFORM: MICROSOFT WINDOWS