

**PHILIPS**

Service  
Manual



**HD9257**

# General information

---

## Technical specifications

- Voltage: 220 V
- Cord length: 0.8 m
- Power: 1700 W
- Capacity: 5.6 liter
- Temperature control: 80 - 200 ° C
- Technology: Rapid air technology
- Time control: Up to 60 minutes

## Weight and dimensions

- Weight appliance: 5.05 kg
- Dimension of product (LxWxH): 392mm\*284mm\*299mm
- Weight (incl. packaging): 6.1 kg

## General specifications

- 8 intelligent pre-setting recipes
- Observe cooking progress
- Check food through the window
- Double pots
- Starfish button
- Fry with up to 90% less fat
- Crispy outside, juicy inside
- Dishwasher-safe
- Well-quality inner pot
- 5.6L family size
- Digital display with 8 presets

## Country of origin

- Made in: China

## Design and finishing

- Color(s): Silk White, Deep Black, Misty Dawn

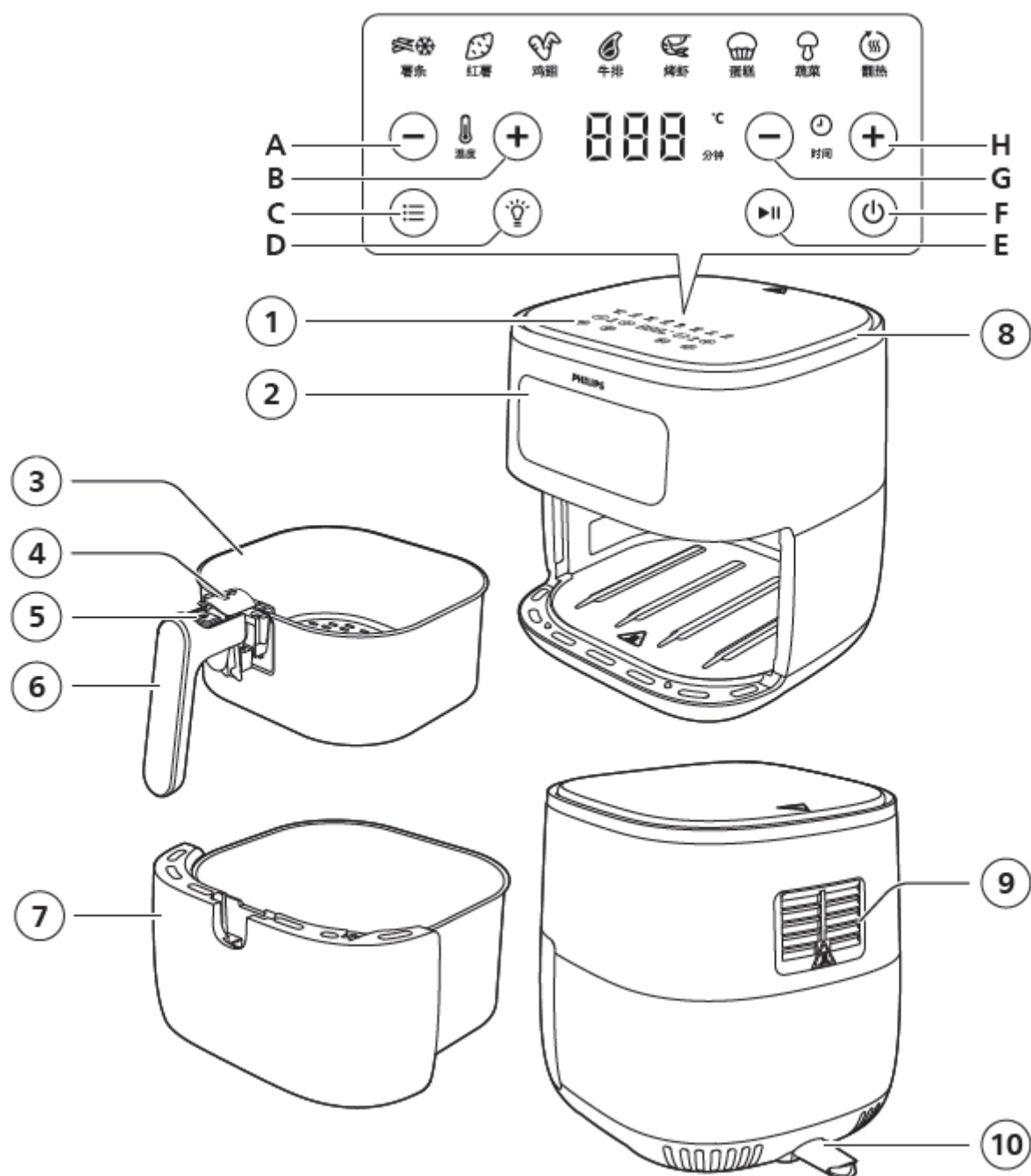
## Accessories

- Inner pot, Out pot, Foot pad

## Service

- 2-year guarantee

# General information



- |            |            |
|------------|------------|
| ① 控制面板     | ② 透明视窗     |
| A 温度降低按钮   | ③ 炸篮       |
| B 温度增加按钮   | ④ 炸篮拆卸按钮滑盖 |
| C 预设程序选择按钮 | ⑤ 炸篮拆卸按钮   |
| D 灯光按钮     | ⑥ 炸篮手柄     |
| E 开始/暂停按钮  | ⑦ 炸锅       |
| F 待机按钮     | ⑧ 进风口      |
| G 时间减少按钮   | ⑨ 出风口      |
| H 时间增加按钮   | ⑩ 电源线      |

# Disassembly and Reassembly advice

---

During assembly

- Make sure that the wiring is properly dressed as in the original situation. When replacing crimp connections or tie wraps, perform a pull test.

Prevent entrapment of wiring between housing or internal parts.

- Make sure that all parts are re-assembled, and that no parts are forgotten.

E.g.: sleeves, internal protection caps, screws.

- Make sure that the housing parts are properly assembled. No gaps should be present, yet make sure screws are not overturned.

After assembly:

- Check all relevant functions of the appliance.
- Check if the consumer complaint has been resolved.

- Check for abnormalities.

E.g.: leaking liquids, smoke, smell, abnormal noise.

- Check the use safety functions.

E.g.: lid-open, detection switch, motor disable switches.

- Check the electrical safety functions:

- leakage current
- high voltage (servicer to perform a test)
- earth continuity (servicer to perform a test)

## Important repair instructions

- Only skilled personnel should carry out the repair.
- After repair the appliance should function properly.
- After repair the appliance has to meet the regulatory- and safety requirements that were applicable at the time of release of the model.
- After repair the appliance always has to be tested for electrical safety according VDE 0701-0702 and for medical products IEC 62353.

# Crimp instructions

Crimped cable connection are more and more used in the assembly process. Actually used at Garment Care, Kitchen appliance, Air product and few more



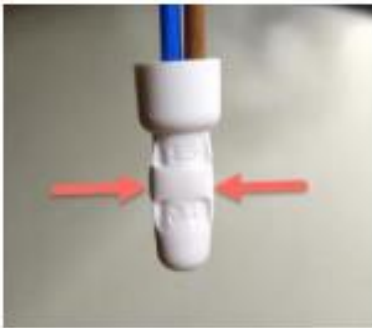
## Reference Document

1. IEC 61210:1993 "Flat quick-connect terminations for electrical copper conductors – Safety requirements"
2. IEC 60352-2:1990 (amd. 1:1996 + amd. 2:2002) "Solderless crimped connections – General requirements, test methods and practical guidance"

What does that mean for Service ?

When ever we replace an electrical component we need to open such connection.

The easiest way is to reopen the pressed crimp housing by attacking from the side with pliers



### Note:

Do not cut the old crimp as this cause shortage of the cable and might be an issue afterwards. Always connect the wires with a new 2 or 3 wire crimp housing

## Required tools:



### Specification:

Ratchet Crimping Tool

- Tool for insulated cable connectors
- 0.5mm<sup>2</sup>
- 6mm<sup>2</sup>
- **Oval crimp**

# Crimp instruction

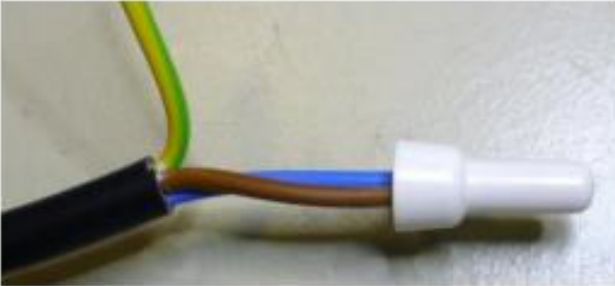
## Prepare the cable:



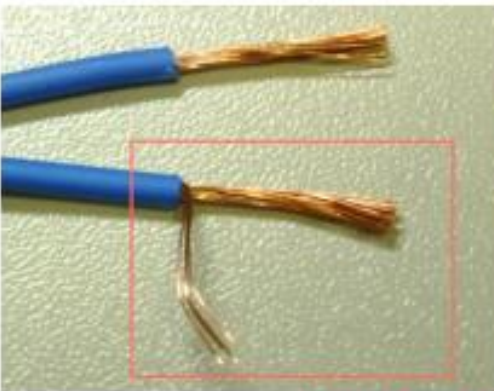
Twist the wires together along the entire lengths of the scrip.

16mm (0,63 in) Max

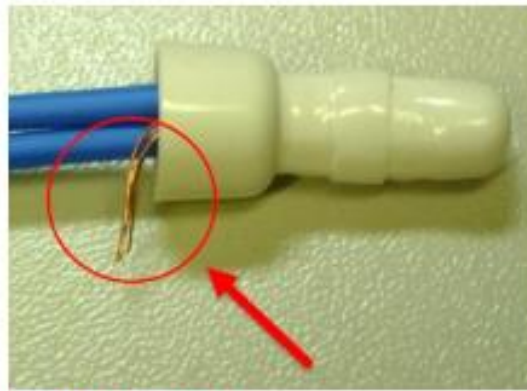
13mm (0,51 in) Min



Insert the cable into crimp housing



Don't miss any single „hair“ !!!

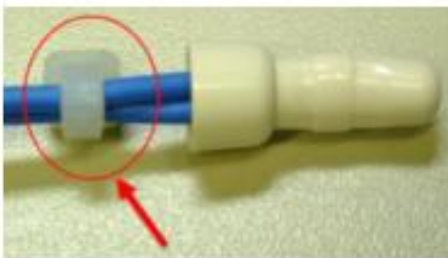


The result of this can have serious safety impact, as wires can touch any metal part and **cause electrical shock !!!!!**



Center the crimp tool on the sleeve,  
Crimp the housing with 6 kg/cm<sup>2</sup>

**!!! Please do pull test that wires are strongly fixed !!!**



Tie wraps are used as strain relief for these connector types as they do not inherently have that. Essential part.  
In case the original cable was equipped with tie wrap you need to add new one.

## **WARNING:**

Take care that you tight the crimp fully.

If it is not done properly it can cause inner sparking and cause overheating and in worst case a fire !

- Please aligned the crimp in such a way that higher humidity can not captured water like swimming pool.
- The open side should always look down

# Repair instructions

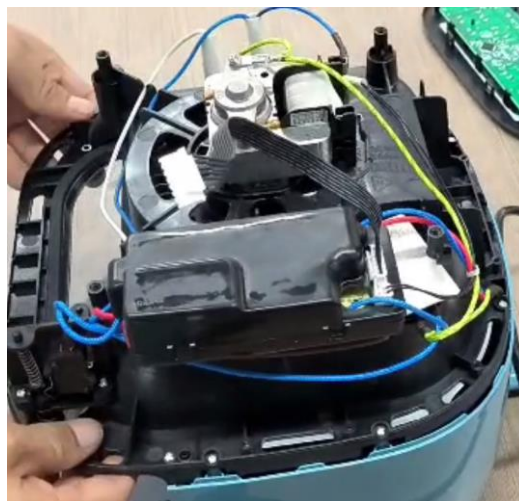
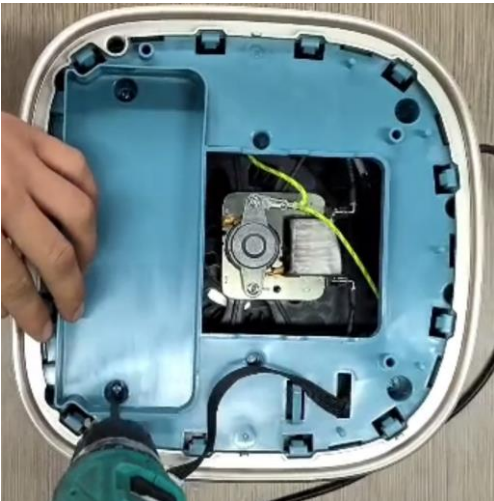
## 1. 将炸篮取出



## 2. 使用一字螺丝刀沿着边缝将上盖撬开，取出上盖。



## 3. 使用十字螺丝刀将上壳的螺丝拆下，取出上壳件。



# Repair instructions

4. 使用合适的螺丝刀拆卸机器底部的电源线固定板。



5. 使用尖嘴钳将连接线端子拆开，取出电源线。



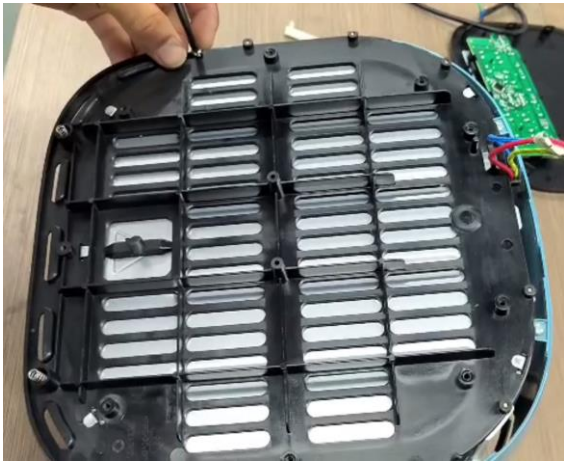
6. 撬开脚垫，取出底座上的螺丝，即可取出底座。



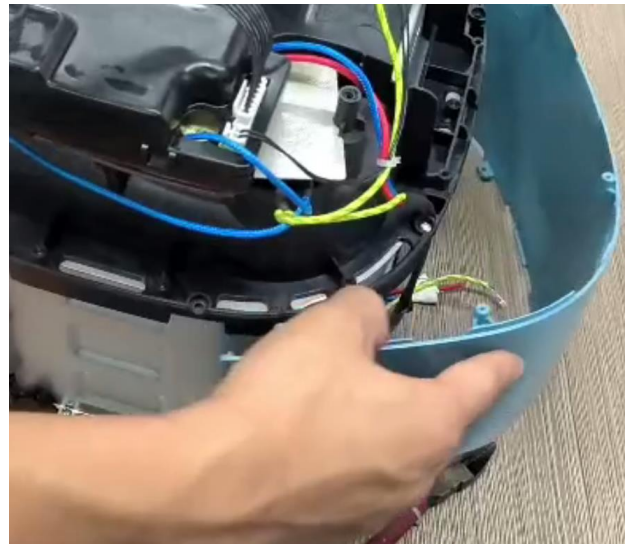
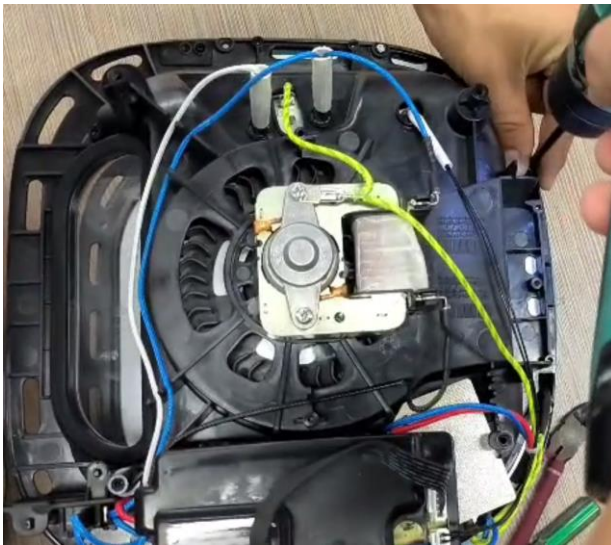


# Repair instructions

7. 拔下接线端子，并拆卸下壳的螺丝，取出下壳件。



8. 拆卸隔热层边上的螺丝，取出炸篮外罩。



9. 拆卸底部螺丝，将五金内衬和隔热层组件分离。

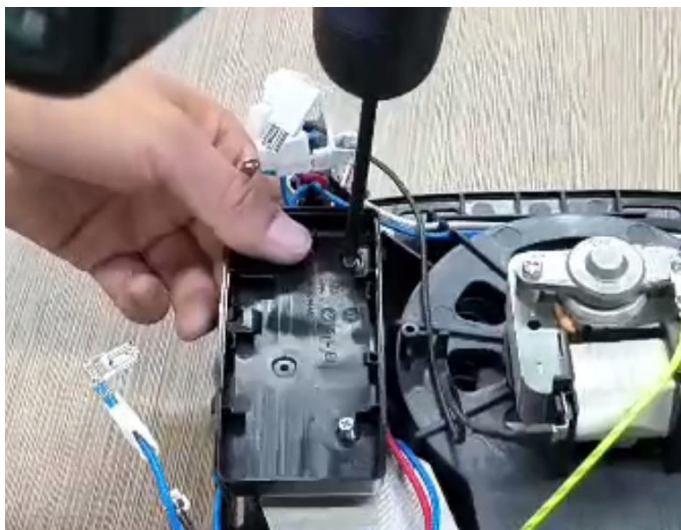
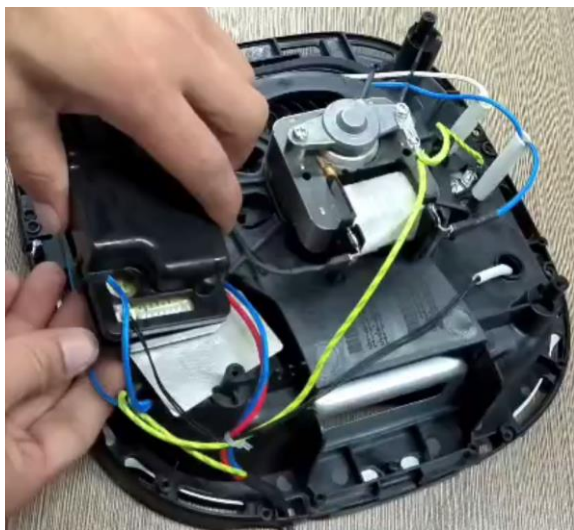


# Repair instructions

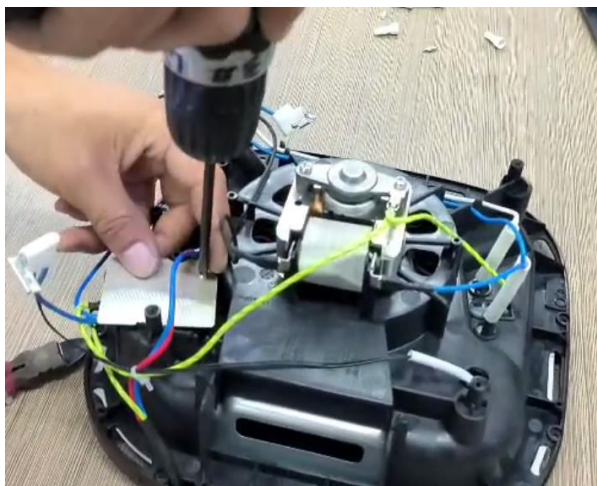
10. 拆卸内衬边缘处的螺丝，将五金内衬和底座分离。



11. 打开电源板保护盒，拆卸所有端子和螺丝，取下电源板。



12. 拆卸挡光板。



# Repair instructions

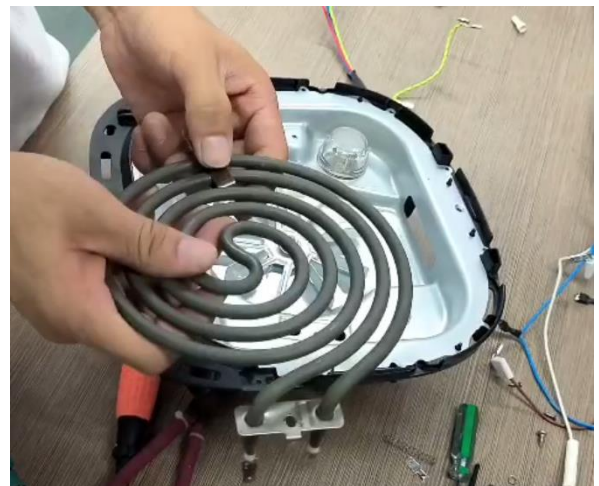
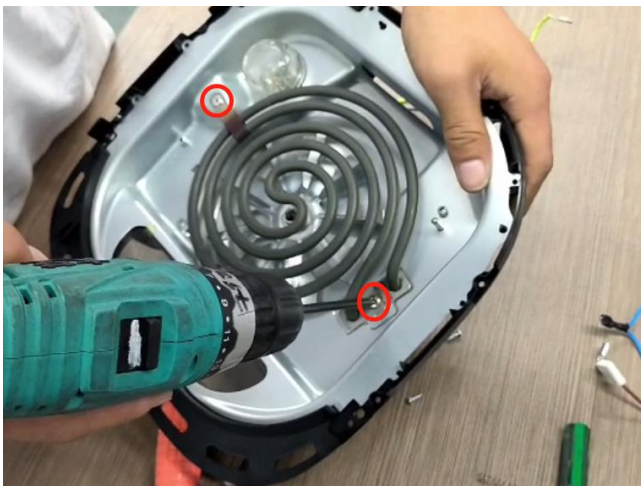
13. 用尖嘴钳将所有内部线束拆除，操作方法见第5页。



14. 拆卸微动开关



15. 使用钻头将电热管两端的铆钉松开，取出电热管

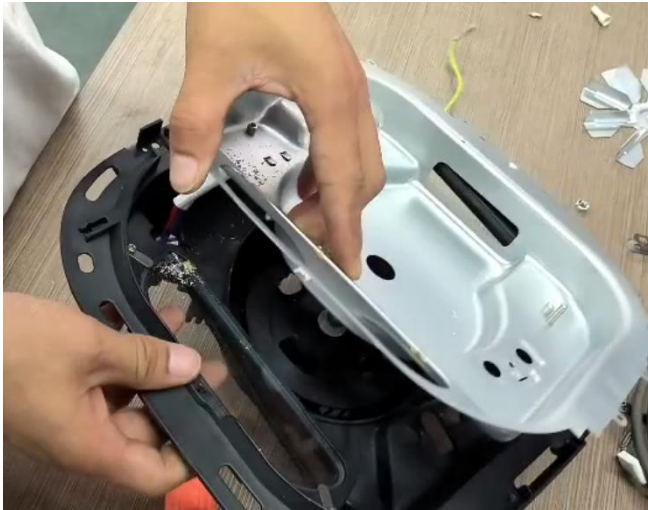


# Repair instructions

16. 用尖嘴钳或活动扳手固定螺母，逆时针转动风扇叶即可将其旋出



17. 分离隔热层和五金内衬



18. 同时压住3块照明灯的突起片，即可拆出照明灯



# Repair instructions

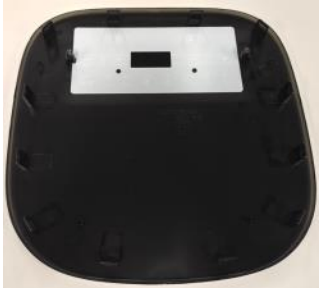
19. 拆卸4颗螺丝，即可取出罩极马达



# Spare Parts

**HD9257/20**  
**HD9257/70**  
**HD9257/80**

1



2



3



4



5



6



7



8



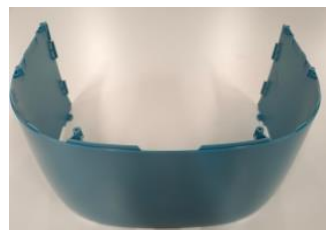
9



10



11



# Spare Parts

HD9257/20

HD9257/70

HD9257/80

12



13



14



15



16



17



18



19



20



21

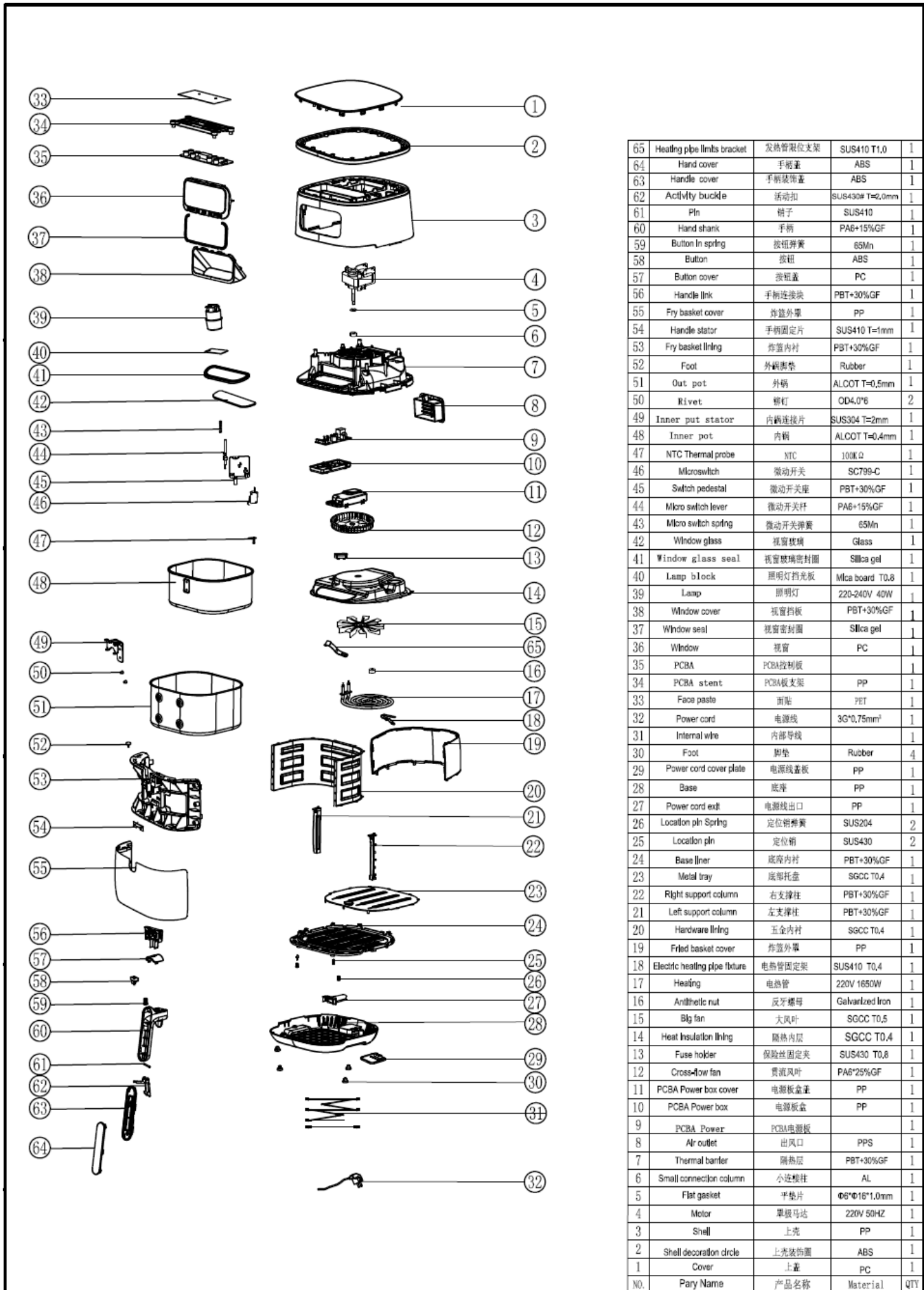


# Spare Part List

| Pos | 12NC         | Description                       | CTN                    | CRP |
|-----|--------------|-----------------------------------|------------------------|-----|
| 1   | 300009648391 | COVER                             | ALL                    |     |
| 2   | 300009650131 | PCBA                              | ALL                    |     |
| 3   | 300009650151 | SILK SHELL DECORATION CIRCLE      | HD9257/20<br>HD9257/80 |     |
|     | 300009652291 | GOLDEN SHELL DECORATION CIRCLE    | HD9257/70              |     |
| 4   | 300009652311 | SILK WHITE SHELL                  | HD9257/20              |     |
|     | 300009652331 | MISTY DAWN SHELL                  | HD9257/70              |     |
|     | 300009652351 | DEEP BLACK SHELL                  | HD9257/80              |     |
| 5   | 300009652361 | WINDOW COVER                      | ALL                    |     |
| 6   | 300009652381 | AIR OUTLET                        | ALL                    |     |
| 7   | 300009652401 | MICROSWITCH                       | ALL                    |     |
| 8   | 300009652551 | PCBA POWER                        | ALL                    |     |
| 9   | 300009649591 | SILK WHITE INNER POT              | HD9257/20              | YES |
|     | 300010236481 | MISTY DAWN INNER POT              | HD9257/70              | YES |
|     | 300010236491 | DEEP BLACK INNER POT              | HD9257/80              | YES |
| 10  | 300009652591 | SILK WHITE OUT POT                | HD9257/20              | YES |
|     | 300010236501 | MISTY DAWN OUT POT                | HD9257/70              | YES |
|     | 300010236511 | DEEP BLACK OUT POT                | HD9257/80              | YES |
| 11  | 300009652621 | SILK WHITE FIRED BASKET COVER     | HD9257/20              |     |
|     | 300009652631 | MISTY DAWN FIRED BASKET COVER     | HD9257/70              |     |
|     | 300009652651 | DEEP BLACK FIRED BASKET COVER     | HD9257/80              |     |
| 12  | 300009652711 | BASE LINER AND TRAY               | ALL                    |     |
| 13  | 300009652741 | SILK WHITE BASE                   | HD9257/20              |     |
|     | 300009652781 | MISTY DAWN BASE                   | HD9257/70              |     |
|     | 300009652811 | DEEP BLACK BASE                   | HD9257/80              |     |
| 14  | 300009653091 | SILK WHITE POWER CORD COVER PLATE | HD9257/20              |     |
|     | 300009653121 | MISTY DAWN POWER CORD COVER PLATE | HD9257/70              |     |
|     | 300009653191 | DEEP BLACK POWER CORD COVER PLATE | HD9257/80              |     |
| 15  | 300009653211 | POWER CORD                        | ALL                    |     |
| 16  | 300009653381 | SILK WHITE POWER CORD EXIT        | HD9257/20              |     |
|     | 300009653391 | MISTY DAWN POWER CORD EXIT        | HD9257/70              |     |
|     | 300009653441 | DEEP BLACK POWER CORD EXIT        | HD9257/80              |     |
| 17  | 300009653471 | HARDWARE LINING                   | ALL                    |     |
| 18  | 300009653481 | MOTOR HEATING UNIT                | ALL                    |     |
| 19  | 300009653491 | LAMP                              | ALL                    |     |
| 20  | 300009653511 | FOOT PAD                          | ALL                    | YES |
| 21  | 300009653521 | LOCATION PIN AND SPRING           | ALL                    |     |

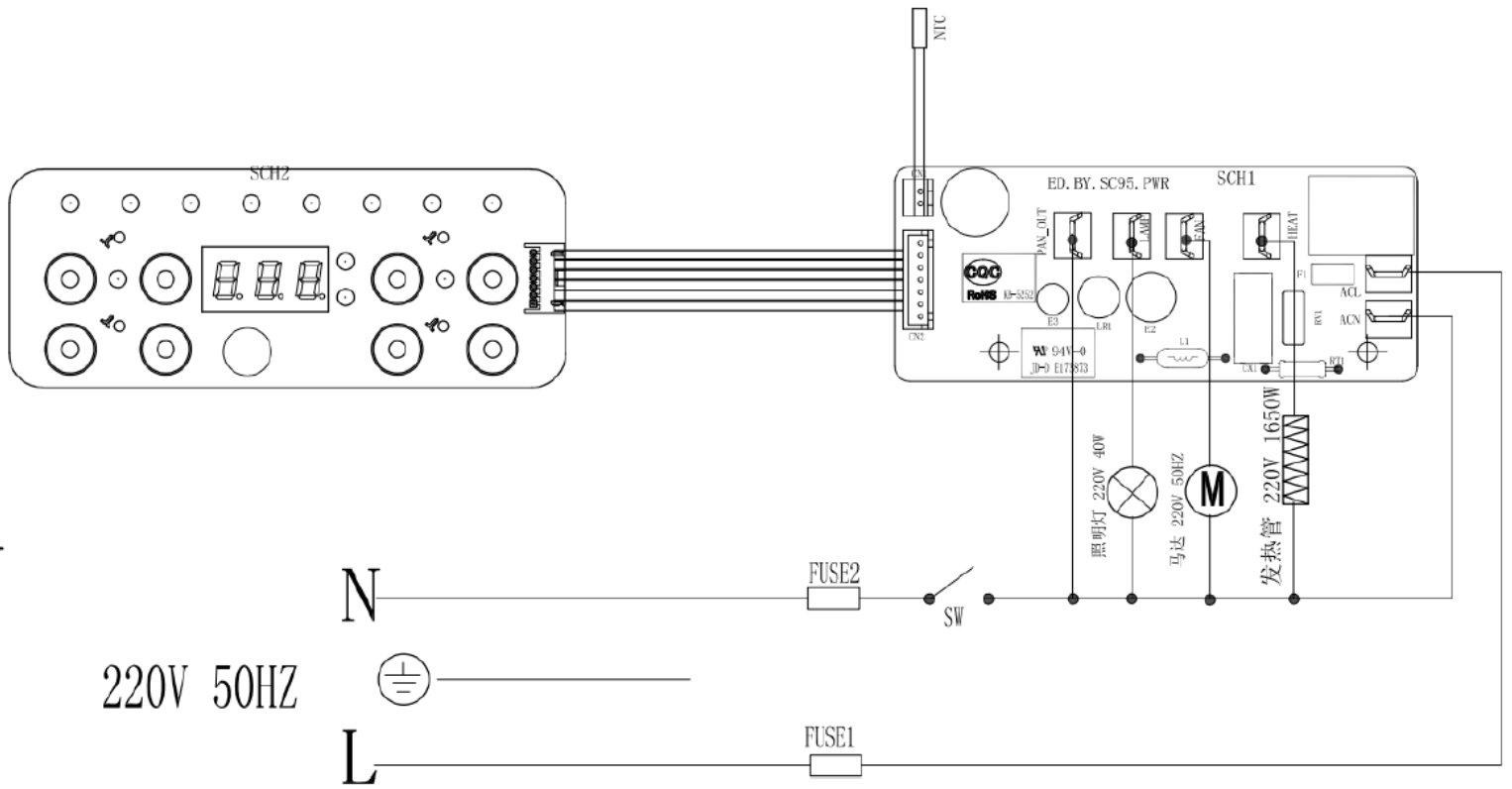


# Exploded Drawing



|     |                               |          |                        |     |
|-----|-------------------------------|----------|------------------------|-----|
| 65  | Heating pipe limits bracket   | 发热管限位支架  | SUS410 T1.0            | 1   |
| 64  | Hand cover                    | 手柄盖      | ABS                    | 1   |
| 63  | Handle cover                  | 手柄装饰盖    | ABS                    | 1   |
| 62  | Activity buckle               | 活动扣      | SUS430F T=2.0mm        | 1   |
| 61  | Pin                           | 销子       | SUS410                 | 1   |
| 60  | Hand shank                    | 手柄       | PA6+15%GF              | 1   |
| 59  | Button In spring              | 按钮弹簧     | 65Mn                   | 1   |
| 58  | Button                        | 按钮       | ABS                    | 1   |
| 57  | Button cover                  | 按钮盖      | PC                     | 1   |
| 56  | Handle link                   | 手柄连接块    | PBT+30%GF              | 1   |
| 55  | Fry basket cover              | 炸篮外罩     | PP                     | 1   |
| 54  | Handle stator                 | 手柄固定片    | SUS410 T=1mm           | 1   |
| 53  | Fry basket lining             | 炸篮内衬     | PBT+30%GF              | 1   |
| 52  | Foot                          | 外脚垫圈     | Rubber                 | 1   |
| 51  | Out pot                       | 外锅       | ALCOT T=0.5mm          | 1   |
| 50  | Rivet                         | 铆钉       | OD4.0*6                | 2   |
| 49  | Inner pot stator              | 内锅连接片    | SUS304 T=2mm           | 1   |
| 48  | Inner pot                     | 内锅       | ALCOT T=0.4mm          | 1   |
| 47  | NTC Thermal probe             | NTC      | 100K.Ω                 | 1   |
| 46  | Microswitch                   | 微动开关     | SC799-C                | 1   |
| 45  | Switch pedestal               | 微动开关座    | PBT+30%GF              | 1   |
| 44  | Micro switch lever            | 微动开关杆    | PA6+15%GF              | 1   |
| 43  | Micro switch spring           | 微动开关弹簧   | 65Mn                   | 1   |
| 42  | Window glass                  | 视窗玻璃     | Glass                  | 1   |
| 41  | Window glass seal             | 视窗玻璃密封胶圈 | Silica gel             | 1   |
| 40  | Lamp block                    | 照明灯挡光板   | Mica board T0.8        | 1   |
| 39  | Lamp                          | 照明灯      | Z20-240V 40W           | 1   |
| 38  | Window cover                  | 视窗挡板     | PBT+30%GF              | 1   |
| 37  | Window seal                   | 视窗密封胶圈   | Silica gel             | 1   |
| 36  | Window                        | 视窗       | PC                     | 1   |
| 35  | PCBA                          | PCBA控制板  |                        | 1   |
| 34  | PCBA stent                    | PCBA板支架  | PP                     | 1   |
| 33  | Face paste                    | 面贴       | PET                    | 1   |
| 32  | Power cord                    | 电源线      | 3G*0.75mm <sup>2</sup> | 1   |
| 31  | Internal wire                 | 内部导线     |                        | 1   |
| 30  | Foot                          | 脚垫       | Rubber                 | 4   |
| 29  | Power cord cover plate        | 电源线盖板    | PP                     | 1   |
| 28  | Base                          | 底座       | PP                     | 1   |
| 27  | Power cord exit               | 电源线出口    | PP                     | 1   |
| 26  | Location pin Spring           | 定位销弹簧    | SUS204                 | 2   |
| 25  | Location pin                  | 定位销      | SUS430                 | 2   |
| 24  | Base liner                    | 底座内衬     | PBT+30%GF              | 1   |
| 23  | Metal tray                    | 底座托盘     | SGCC T0.4              | 1   |
| 22  | Right support column          | 右支撑柱     | PBT+30%GF              | 1   |
| 21  | Left support column           | 左支撑柱     | PBT+30%GF              | 1   |
| 20  | Hardware lining               | 五金内衬     | SGCC T0.4              | 1   |
| 19  | Fried basket cover            | 炸篮外罩     | PP                     | 1   |
| 18  | Electric heating pipe fixture | 电热管固定架   | SUS410 T0.4            | 1   |
| 17  | Heating                       | 电热管      | 220V 1650W             | 1   |
| 16  | Artificial nut                | 反牙螺母     | Galvanized Iron        | 1   |
| 15  | Big fan                       | 大风叶      | SGCC T0.5              | 1   |
| 14  | Heat insulation lining        | 隔热内层     | SGCC T0.4              | 1   |
| 13  | Fuse holder                   | 保险丝固定夹   | SUS430 T0.8            | 1   |
| 12  | Cross-flow fan                | 贯流风叶     | PA6+25%GF              | 1   |
| 11  | PCBA Power box cover          | 电源板盒盖    | PP                     | 1   |
| 10  | PCBA Power box                | 电源板盒     | PP                     | 1   |
| 9   | PCBA Power                    | PCBA电源板  |                        | 1   |
| 8   | Air outlet                    | 出风口      | PPS                    | 1   |
| 7   | Thermal barrier               | 隔热层      | PBT+30%GF              | 1   |
| 6   | Small connection column       | 小连接柱     | AL                     | 1   |
| 5   | Flat gasket                   | 平垫片      | Φ6*16*1.0mm            | 1   |
| 4   | Motor                         | 罩极马达     | 220V 50HZ              | 1   |
| 3   | Shell                         | 上壳       | PP                     | 1   |
| 2   | Shell decoration circle       | 上壳装饰圈    | ABS                    | 1   |
| 1   | Cover                         | 上盖       | PC                     | 1   |
| NO. | Part Name                     | 产品名称     | Material               | QTY |

# Circuit diagram



# Version History

- Version A: Initial release ----wk2227
- Version B: Updated new spare part ----WK2246



[www.philips.com](http://www.philips.com)