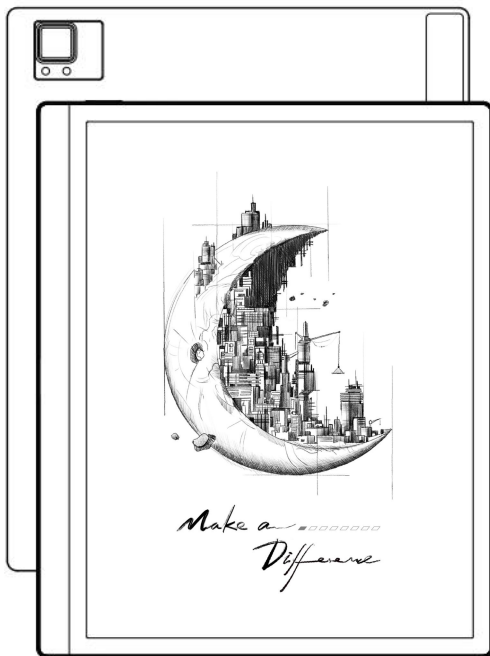


# Tab Ultra BOOX UserManual

---



# Contents

1. Copyright Declaration .....	3
2. Product Details .....	4
3. Safety Guide .....	6
4. Quick Start .....	9
5. System Functions .....	25
6. ONYX APPS .....	33
7. System Settings .....	100
8. Thank you for your support .....	116

## **1. Copyright Declaration**

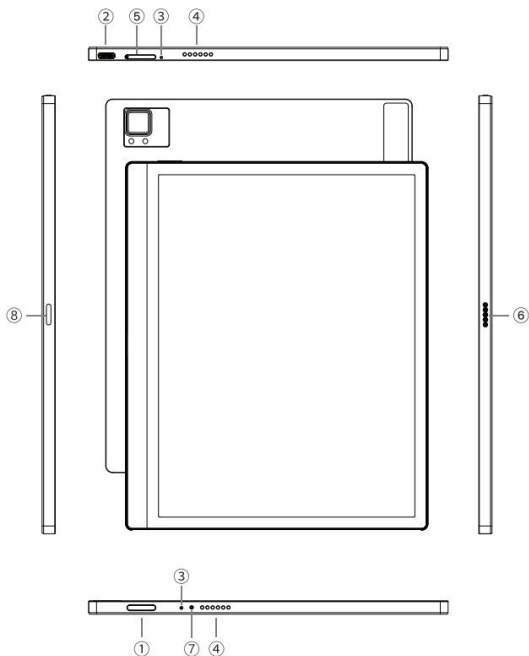
---

Guangzhou Onyx International Inc. reserves the right to make changes to the product specifications and contents contained in the Quick Start Guide and User Manual without prior notice.

1. All book images in this manual are for display only, not pre-installed books;
2. Due to different software versions, some functions or interfaces may be inconsistent with the description in the manual. It is subject to the final product.

## 2.Product Details

---



- ① Power
- ② Type-C Port
- ③ Mic
- ④ Speaker
- ⑤ TF card Slot
- ⑥ Pogo-Pin(for keyboard cover)
- ⑦ Indicator
- ⑧ Attach Stylus here

## Product Specifications

<b>Operating System</b>	Android 11
<b>CPU</b>	Octa-core 2.0GHz
<b>ROM</b>	4GB LPDDR4X
<b>Storage</b>	128GB
<b>Screen Size</b>	10.3 Inches
<b>Resolution</b>	1872x1404 (227ppi)
<b>Touch</b>	Electromagnetic and Capacitive Touch
<b>Frontlight</b>	Dual-color Frontlight
<b>Wireless</b>	WiFi ( 2.4G+5G ) Bluetooth ( 5.0 )
<b>Battery</b>	6300 mAh
<b>Dimensions</b>	225mm*184.5mm*6.7mm
<b>Weight</b>	≤480g
<b>Ports</b>	Type-C( Support OTG )
<b>Others</b>	Mic, speaker, G-sensor
<b>Operating Temperature</b>	0° C- 50° C

### 3.Safety Guide

---

Please read the following safety instructions before use. If you encounter any technical difficulties, please contact your BOOX retailer, or call the official after-sales hotline at 4008-400-014 or 4008-860-830 for assistance.



#### **Fragile Screen Protection**

The E-ink screen is very fragile. Please do not directly hit, squeeze, oppress the screen, or drop it from a high place onto a hard surface. If the display screen is broken, please stop using it and contact our customer service or other qualified professionals for replacement. Do not disassemble and replace it by yourself.



#### **Qualified Accessories**

Only batteries, chargers and other accessories that meet the safety standards of this equipment are allowed to be used. For details, please refer to the product specifications.

Use of incompatible accessories will result in damage to the device at your own risk.



**Keep away from strong magnets\static electricity**

Please keep away from strong magnetic and electrostatic environment to avoid abnormal writing on the electromagnetic screen or damage to other electronic parts.



**Keep away from liquids**

This device is not waterproof. Do not expose it to a humid environment or use it in the rain. Please keep it away from any corrosive liquids.



**Do not dismantle the device**

The battery of this device cannot be replaced. Please do not disassemble it by yourself to avoid damage to the structure or screen.



## Using environment

The environment temperature range of using this device is 0° C–50° C. Please do not use it continuously in high temperature or low temperature environment.

We are not responsible for the damage or loss of data in the equipment caused by human abnormal operation or unexpected circumstances, nor for other indirect losses caused thereby.

If you need to return to the factory for repair, please back up important data by yourself. We are not responsible for data loss caused by repairing or replacing parts or updating the system.



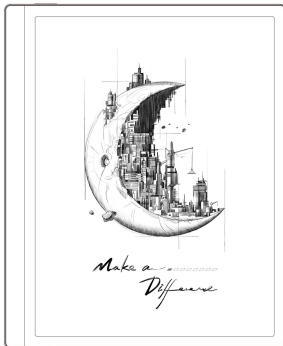
## 4.Quick Start

---

### 4.1 Power On



Press and hold the power button for 2–3 seconds. When the indicator lights up, it goes into the startup interface. Wait until it goes into the Home Screen.

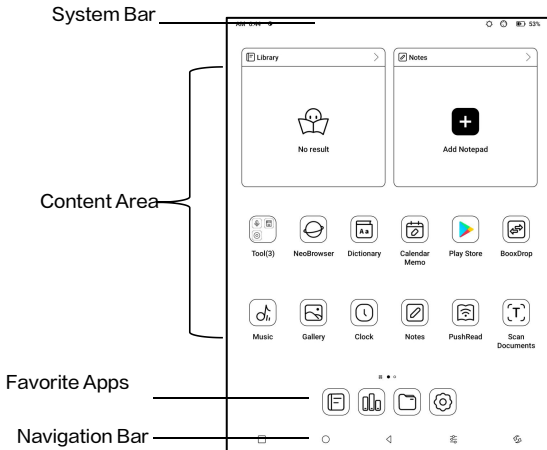


**Note:** If you cannot turn the device on, please charge it for 20 minutes first, then restart.

### Initial Setup

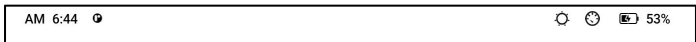
Please follow steps to complete the initial setup, including System language, Power, Navigation Bar Settings, etc. The initial setup can be changed later in Settings.

## 4.2 Home Screen



### System Bar

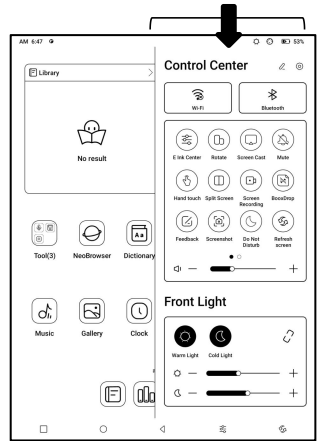
The area displays the current status of the device, including Time, Notifications, Refresh Mode, Wi-Fi, battery status, etc.



## Control Center

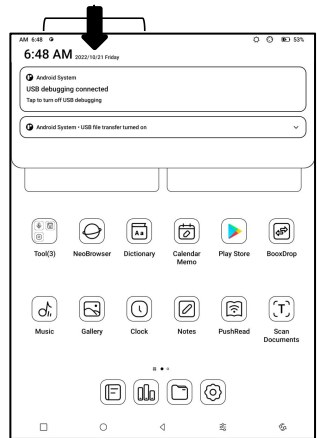
Pull it down from the right top edge or tap to expand.

Tap the “Edit” icon on the top to edit the functions for the center.



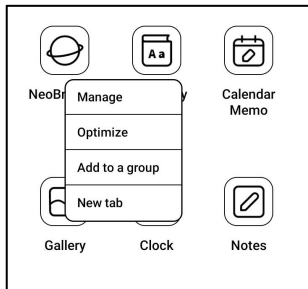
## Notification Center

Pull it down from the left top edge or tap to expand.

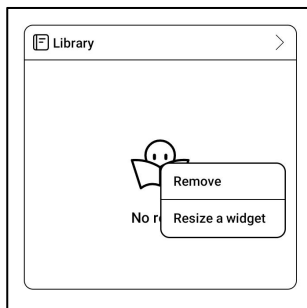


## Content Area

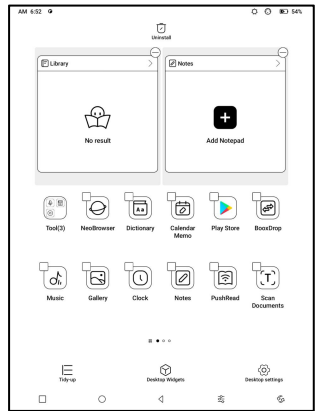
Tap and hold an app to move it around on the screen, uninstall it, optimize it, add it to a group, or access some quick functions supported by the app.



Tap and hold a widget to move it around, remove it, or resize it (The widget is required to support different sizes)

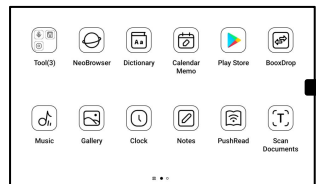


Tap and hold a blank area for 2 seconds to enter desktop editing status. Tidy up apps on the screen, add widgets to desktop, and manage desktop settings.



## Add Desktops

After the current desktop is full, a second desktop will be automatically added when a new app is installed. You can also long press and drag any icon to the next page manually.



## Favorite Apps

Long press an app to drag, add, and remove. Up to 6 apps can be added.



## Navigation Bar (Default)

Four combination options available. You can choose your preferred option.



C1: Back / Home Screen /

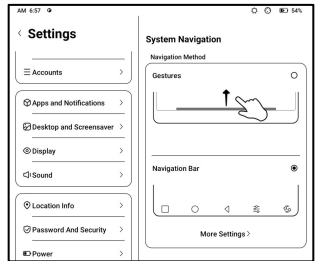
Multitask / E Ink Centre/ Full Refresh

C2: Multitask / Home Screen / Back / E Ink Centre / Full

Refresh

# Gestures

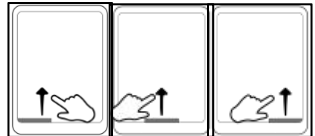
Go to Settings/ System Navigation to change to navigate by Gestures.



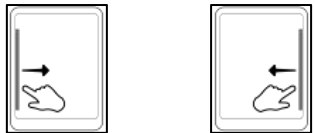
## Customize Gestures

Bottom (Default:)

Multitask, Home Screen, E ink Centre



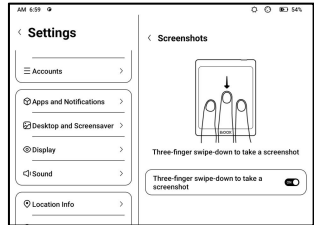
Sides (Default): Back



Customize the gestures to your own preferences.

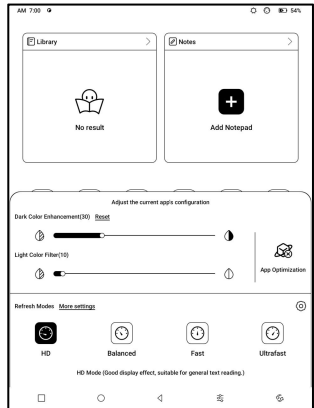
## Other Gestures

Swipe down with 3 fingers to take a screenshot. This gesture is enabled by default. You can go to Settings / System Settings / Screenshots to disable it.



## 4.3 E-ink Center (App Optimization)

It can be called from the Control Centre or swiping up from the bottom. This function is mainly used to optimize the display effect of third-party apps on E Ink devices. When it is called on an app interface, the optimized configuration is applied to that app only.





## Refresh Modes

You can preset different refresh modes for different apps, or change later.

**HD:** Good display effect, suitable for general text reading.

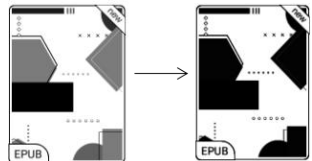
**Balanced:** Heavier ghosting, suitable for quickly skimming through images and text.

**Fast:** Heavy detail loss, suitable for browsing webpages.

**Ultrafast:** Heavier detail loss, suitable for playing videos.

## Dark Color Enhancement

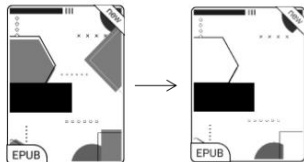
This function turns darker colors to black and is generally used for enhancing foreground colors, or



light-colored pages, such as colorful icons, and low-quality scanned PDFs.

## Light Color Filter

This function turns light page colors to white and is normally used to whiten the background colors.



## More Settings

Customize more optimization settings for a better user experience by going to E Ink Center/ App Optimization or long-press an app' s icon to choose “ Optimize” .

# Display

**DPI:** Adjust the overall interface size and its default value is 350.

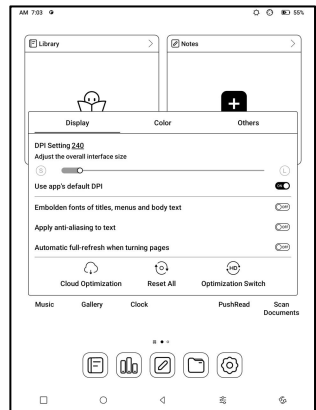
If some apps (such as Kobo) are adjusted to the minimum value and the edges are still cut off, please switch back to the original DPI value of the apps.

**Anti-aliasing:** Make the text edge sharper

**Cloud Optimization:** Some apps have been optimized for better performance. Obtain the optimization with just one click after connecting to the internet.

**Reset All:** All optimization settings will be reset.

**Optimization Switch:** The main switch. After it is turned off, some optimization effects will be canceled, but the configuration will not be reset.



## **Color**

### **Add strokes to text**

Some text may be invisible due to the background bleach.

Add strokes to text can make the text visible again.

Recommended value: 1.

### **Background Color**

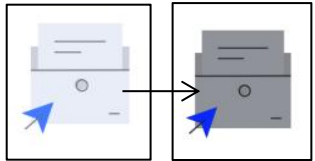
This is to bleach a large area of the background color. It is recommended to use this setting together with text enhancement and Icon Colors. Otherwise, the text and small icons on the background will not be visible.

### **Icon Color**

Generally, this is to darken the colors of some small colorful icons in the menu.

## Cover Color

Generally, this is to darken the colors of large cover-style icons.



## Webpage Text Size

This is for the embedded WebView interface. When the DPI adjustment is invalid, you can try to adjust the font size of the webpage

## Webpage Text Color

When bleaching does not work, you can try to adjust the webpage colors.

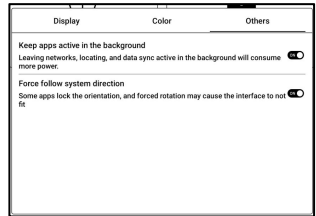
## Embolden Webpage Text

When some fonts cannot be emboldened, you can try to embolden the webpage text.

## Others

### Keep apps active in the background

This is for the apps that are continuously running in the background, such as Alarms, Notifications, Download. You can stop the apps running.



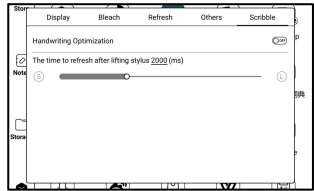
### Force follow system direction

Some APPs lock the direction. When the system rotates, if the APP cannot follow the rotation, forced rotation can be used;

Forced rotation may cause some interfaces to fail to display normally, which is related to the design of APP. For such APP, it is recommended to turn off forced rotation and use the original direction;

## Scribble (Only support some apps)

This setting is only applied to apps with handwriting functions and is to optimize the handwriting speed. Currently it only supports apps including OneNote, Evernote, and WPS.



Refresh time after lifting stylus:

The time to refresh after lifting stylus: The handwriting will be refreshed in a set time after you stop writing. The refresh applies to the app's settings such as types, width, and pressure sensitivity.

When refreshing handwriting is in progress, you cannot continue writing. You can continue writing after the refreshing is done.

When refreshing handwriting, you cannot continue writing, please continue to write after refreshing;

If you want less interruption by the refreshing, you can set the refreshing frequency longer.

Hand touch may cause interruption to handwriting. You are recommended to disable hand touch to reduce accidental touch on the canvas to cause problems.



## 5. System Functions

---

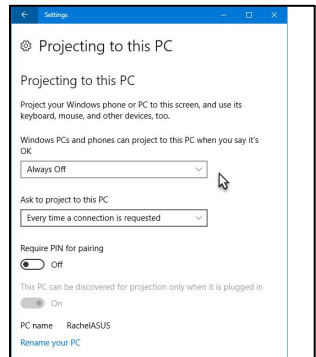
### 5.1 Screen Cast

5.1.1 This feature supports Windows 10 or above. It does not support Win 7/XP and MacBook.

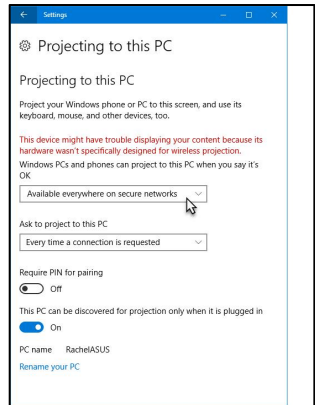
5.1.2 Please make sure your computer supports the Screen Cast function. You can check it in the computer system: System / Projecting to this PC

Please be aware that there are 4 settings that will affect the results of searching the computer on your BOOX and the confirmation of connection request.

The computer supports  
Screen Cast



The computer does not support  
Miracast /Screen Cast



5.1.3 Please make sure that your computer and BOOX are connected to the same wireless network.

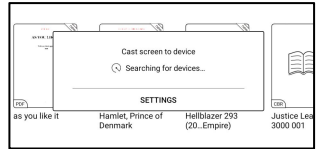
If your desktop computer connects Wi-Fi via Wireless Network Card, please check whether the step2 is supported.

Some computer configuration and wireless network cards do not support this function.

5.1.4 On your BOOX, select Screen Cast from drop-down Control Center. Then the automatic search will start. The

computer name will be shown when found.

5.1.5 Select the found computer in the search window. If there are multiple computers, select the computer that you want to project to from the list.



5.1.6 After you select the computer that you want to project to, your computer will pop up a notice to ask whether to accept the projecting request.

5.1.7 After you accept it, your BOOX and computer will automatically connect to each other. And the Screen Cast is successful.



If the "Unable to view protected content on this device" appears on the screen, the connection may be unsuccessful. Please disconnect the device, and request the Screen Cast connection again.

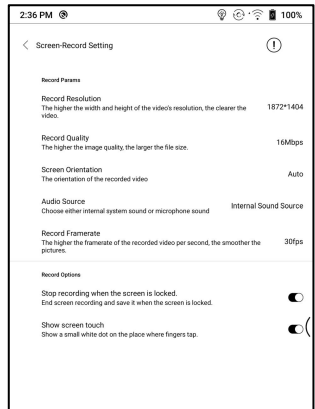


5.1.8 When your BOOX and computer are connected, please tap Screen Cast again from Control Center, then select “Disconnect” . Your computer cannot disconnect the connection.

If your computer support Screen Cast but cannot receive the request, please restart your computer and try to connect again. Please also check whether your computer's setting is to reject the request. (See Step2).

## 5.2 Screen Recording

Long press Screen Recording icon to go to screen recording settings. You can customize Resolution, Recording Quality, Screen Orientation, Audio Source, Recording Framerate, etc.



If you use Screen Recording for the first time, you are recommended to adjust the relevant settings first.

Tap Screen Recording icon to enter recording widget. Tap the Start icon to start recording and tap the Close icon to stop recording.

After recording is done, there will be a thumbnail enabling you to play or share the recorded video.

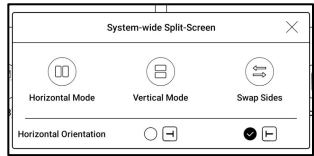
Tap and hold the recording widget to drag it around. The recording widget will not be recorded into the video.

After the Screen Recording is enabled, the recording widget will be floating on the screen all the time. You can create different recordings. Tap X to close it completely.

The recording format is MP4. The save path is  
Storage/Movies/Captures

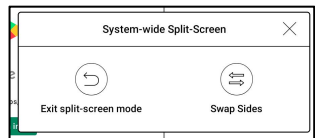
## 5.3 Split Screen

When an app is open, choose Split Screen from Control Center to initiate the function. The Split Screen supports docs, Notes, and other apps. The Split Screen cannot be initiated from system interface.



**Note: Whether an app support Split Screen is subject to the app itself. If the app does not support Split Screen, please get in touch with the developer.**

In Split-Screen mode, the newly opened app is the secondary screen. You can choose to swap sides and exit the Split Screen mode.



In Split-Screen mode, only the app on the main screen support Refresh settings and the refresh setting does not take effect on the secondary screen.

In Split-Screen, Display settings take effects on both apps.



## 6. ONYX APPS

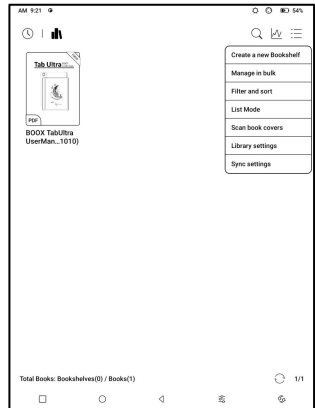
---

### 6.1 Library

The Library only shows the supported formats. Cover Mode is used by default. All eBooks are sorted by Time Created.

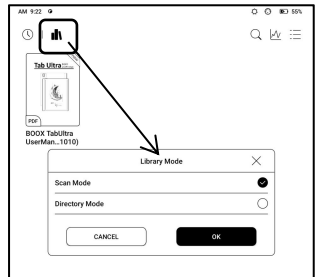
On the upper right corner of the Library, you can search books, create bookshelves, manage books in bulk, check Reading

Statistics, filter and sort, switch between Cover and List modes, scan book covers, manage sync and Library settings.



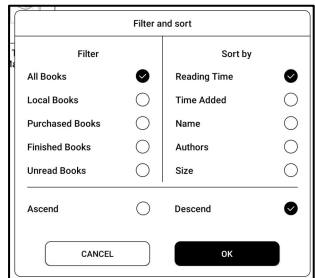
## Library Mode

By default, the Library is in Scan Mode, which automatically scans all supported files under specified saving paths. Tap the icon to switch to Directory Mode which displays all supporting documents according to the directory structure in the Storage.



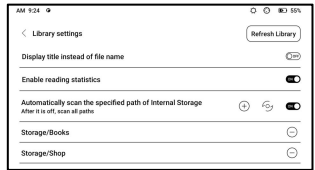
## Filter and sort

Apply to all eBooks by default and sort by the recent reading time in descending order;



## Library Settings

You can choose to display title instead of file name, enable/disable reading statistics, or choose scan path.



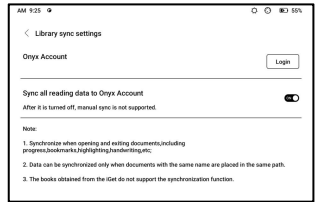
The default scan path is: Books and shop in Storage. You can customize the scan path and choose to auto-scan the specified path.

Note: In the following case, some documents will be removed from the Library after the Library is refreshed. You can check the source files from the saving path.

1. Documents opened directly from other non-scanning path in Storage.
2. Documents that are not in the default scan path after the default scan path is modified.

## Sync settings

You can sync reading progress and data across devices via Onyx Cloud. The feature is on by default. If you do not want to sync your reading data of all documents, you can turn this feature off.

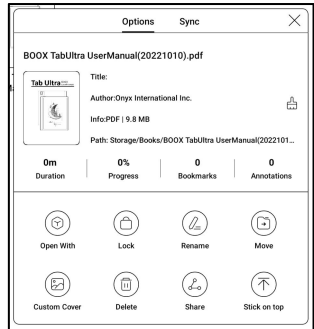


If you do not want to sync the reading data of some documents, long press their book covers to go to Sync Settings, and turn their sync off individually.

**Note: Currently, only reading data can be synced to the Cloud. The source document cannot be synced to the Cloud. You need to add documents to the same path on different devices for the sync.**

## Book Property

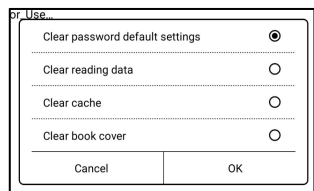
Long press a book cover to check book-related information, including title, author, format, size, reading progress, book details, Open with, Lock, Rename, Move, Custom Cover, Delete and Share.



Saving path: tap the saving path to jump to the actual saving location.

## Clear settings

You can clear password, reading data, cache, and book cover.



## **Clear password default settings**

Only clear the default settings of locked documents or documents with their own passwords, and will not clear the relevant passwords.

## **Clear reading data**

All personal data of the selected book will be cleared. The data cannot be recovered after being cleared.

Please perform this action carefully!

## Lock

Add locks to documents (reading passwords) to protect personal reading data. The password is used to open books in NeoReader. When the documents are exported or copied to other devices or other apps, the password will not be valid anymore.



The screenshot shows a dialog box titled "Add Password". It has two radio button options: "Use Fingerprint Password" (which is selected) and "Use Numeric Password". Below these are two text input fields: "Please Enter Password: Please enter a 4 to 8 digit" and "Confirm Password: Please enter the Password ag". A checkbox "Use this Password Setting by default" is checked. At the bottom, there is a notice: "Notice: The Password cannot be reset without login of Onyx Account ( Mobile or E-Mail)". At the very bottom are "Cancel" and "OK" buttons.

The digital password only supports setting one password. After setting the digital password for the first time, you do not need to set it again if you use the digital password for other documents. You only need to add locks to other documents.

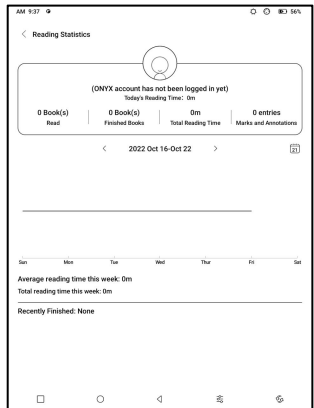
The reading password cannot be retrieved. If you forget your reading password, you can only reset the password through Onyx Account (only Mobile phone and Email login

methods supported).

If you use this password by default, you can add password directly to other documents after setting it for the first time. In this case, you do not need choose to add locks every time.

## Reading Statistics

This summarizes your personal reading statistics, including Today's Reading Time, Read Books, Finished Books, Total Reading Time, Marks and Annotations.





Average reading time this week is based on 7 days and calculates the average daily reading time within this week.

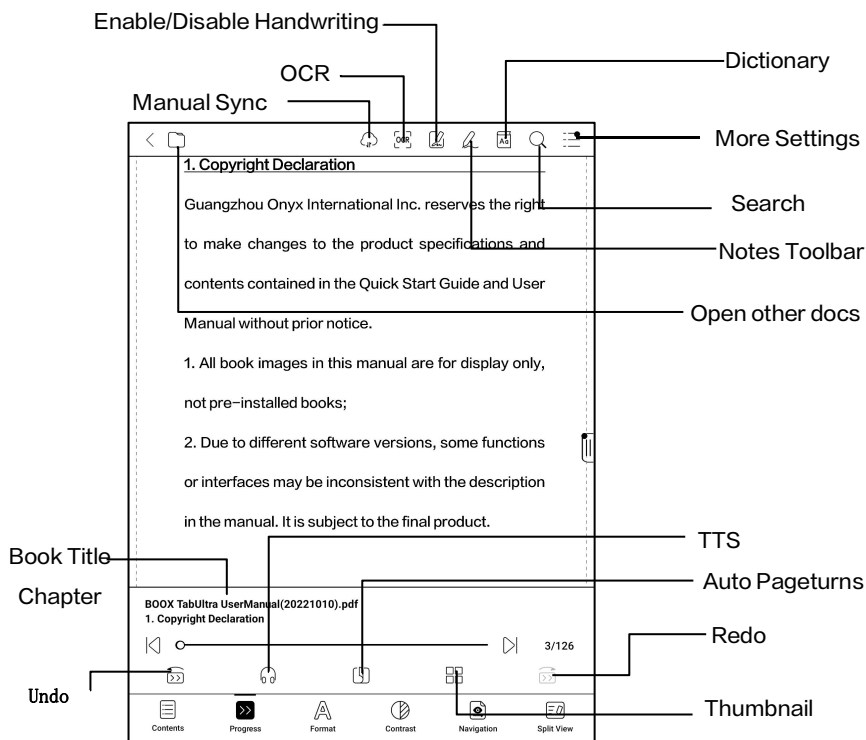
Tap Marks and Annotations to jump to My Annotations page and tap any book under Recently Finished Books to open the book.

If you do not log in to your Onyx account, the statistics will be kept locally.

If you do not want to use reading statistics, you can turn it off from Library Settings. After it is off, the reading statistics icon in the Library will not show anymore

## 6.2 NeoReader

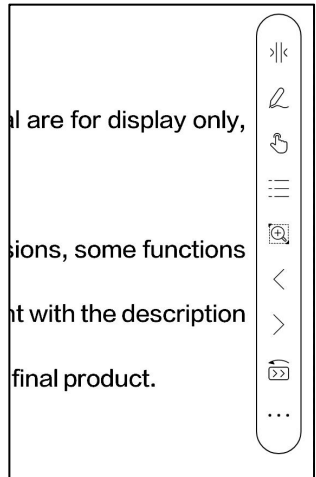
Tap the center of the screen to bring up the reading menu. You can switch between multiple documents, and select related functions.



## Floating Toolbar

By default, the Floating Toolbar is collapsed to the right edge.

When it is expanded, long press the Toolbar to drag it to anywhere you want on the screen. It can be collapsed to the sides to avoid covering text during reading. When needed, swipe left or right from the screen edges to call it out.



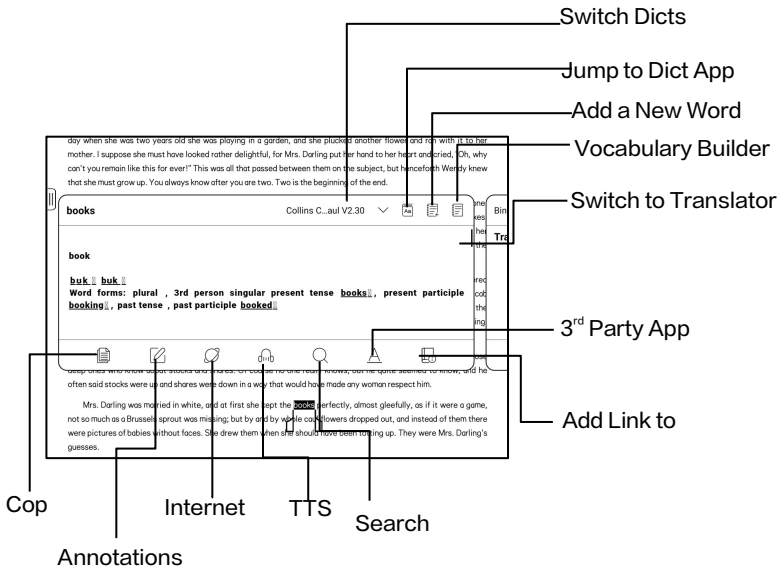
When using zooming and columns in PDF, automatically add the Panning icon and Reset icon(both are off by default) to help you manage the zoomed-in document.

When a page is divided into several columns, single tap to turn each column and tap the Virtual Buttons to turn the whole page

## Long press to select a word

Long press a word to call out the dictionary dialog box. You can switch between different dictionaries. Select the one you want from the dropdown list.

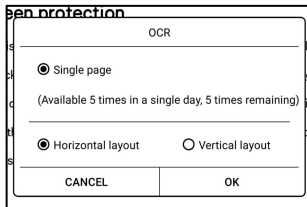
This function requires you to install dictionaries. If you haven't installed a dictionary, you cannot look for words. Tap any area outside of the dictionary dialog box to exit it.



## OCR ( Beta Version )

Only support images on formats including PDF、CBR、CBZ、DJVU、PNG

Recognize one page at a time.



Selecting the right layout

(horizontal or vertical layout) can

improve recognition accuracy. After recognition, long press any text to add marks or look up dictionaries.

Not logged in to the Onyx account, 5 times available a day

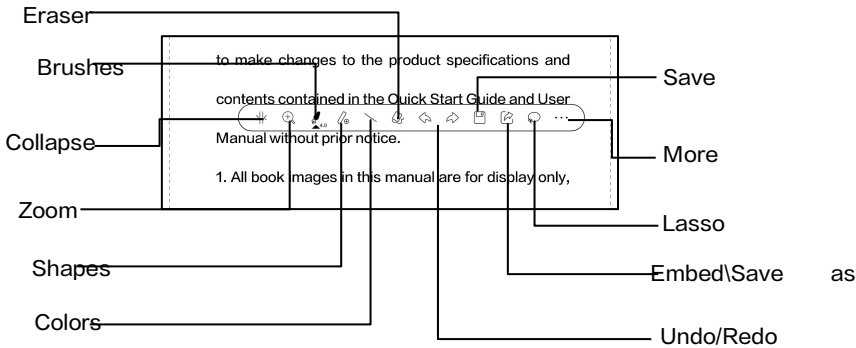
Log in to your Onyx account, 10 times available a day

If some recognized text is not accurate, you can correct the text in the annotation dialog box (This does not change the original text in the image)

The pages that have used OCR will show the OCR icon in the upper right corner. Check all recognized pages from Contents/Bookmarks where you can quickly locate and jump to the relevant pages. Tap the OCR icon on the upper right corner to clear OCR content.

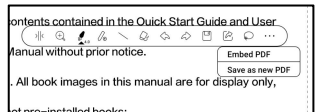
### **Handwriting Toolbar**

The handwriting Toolbar is floating on the screen. Long press it to drag it around. Handwriting status is by default. You can disable and enable it from the reading menu on the top. Bring out Handwriting Toolbar from the Floating Toolbar. You can collapse it.



## Embedded PDF data

The handwritten notes in PDF will be embedded into original documents when you exit a document. You can open, view, and edit them with other apps such as Adobe Acrobat, WPS, and Chrome on your PC. You can copy to other BOOX devices to view and edit as well.



**Embed PDF:** You can embed handwritten notes into original documents from the Handwriting Toolbar when you are still in a document.

**Save as new PDF:** a new PDF document will be exported and keep the same handwritten notes.

Non-PDF documents do not support embedding data. You can only check and edit the relevant data on your BOOX. Changing the document name will not impact the existing data.



## PDF documents with embedded data

1. Changing document name, copying, or moving saving location will not impact recognizing PDF embedded data
2. When you use other apps to open the document on a PC, it will be split into multiple documents. New documents are different documents and will not import embedded data.
3. When you use other apps to open the document on a PC, it will be recognized as a different document after being edited and saved. And the embedded data will not be imported.
4. When you merge multiple PDF documents into one, the new document will be a different one and will not import embedded data.

Note: If you use handwriting when your BOOX is connected to the PC, it is recommended to disconnect the USB, save

the PDF, and then connect the USB again to open it from the PC in order to ensure the normal data update.

## **PDF Documents without embedded data**

When a new PDF document is opened, the system will automatically detect and import the existing local data by the document ID and saving path.

For example, if you delete document 123.pdf with embedded data from local storage, and then put the original 123.pdf document without data back, the following scenarios may exist:

1. When save it in the same path as the previous document, the embedded data will be automatically imported.
2. When you save it in a different path, the embedded data will not be imported.
3. When you change the name of the original document

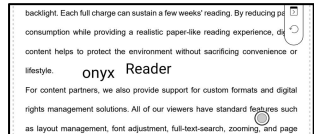
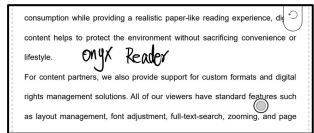
and even save it in the same path, the embedded data will not be imported.

4. If you change another document to 123.pdf and save the document in the same path, the embedded data will not be imported.

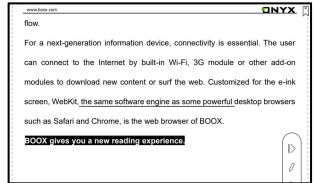
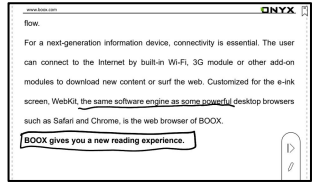
## Handwriting Recognition

It is off by default. You can go to Settings – Handwriting Recognition Setting to enable it.

For handwritten notes and drawn shapes, double-tap onto the handwriting, which will be converted to printed text and standard shapes.

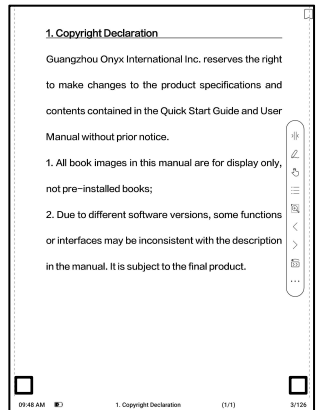


The handwritten notes and drawn shapes within 0.5cm and straight lines within 0.3cm will be deemed one recognition content area. Distance further than above will be deemed different recognition content areas.



**Tap lower left and right corners on the screen to turn pages**

When palm rejection is enabled, you can enable this feature from Settings/ Handwriting Recognition Setting. After it is enabled, you can turn pages by tapping the lower left and right corners using your stylus.



## Reading Menu at the bottom (PDF)

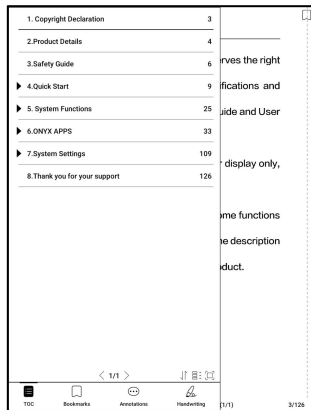
The menu includes Contents, Progress, Format, Contrast, Navigation, and Split View

### Contents

This section includes TOC, Bookmarks, Annotations, and Handwriting.

TOC supports a 3-level structure. The current page is underlined in the TOC. Tap each content to jump to the

corresponding page. Tap any area outside of the Contents interface to exit.



1. Copyright Declaration	3
2. Product Details	4
3. Safety Guide	6
▶ 4. Quick Start	9
▶ 5. System Functions	25
▶ 6. ONYX APPS	33
▶ 7. System Settings	109
8. Thank you for your support	126

erves the right  
fications and  
ide and User  
display only,  
me functions  
e description  
duct.

< 1/1 >

TOC Bookmarks Annotations Handwriting 1/1 3/129

## **Bookmarks**

When reading a book, you can tap the Bookmark icon on the upper right corner to bookmark the current page. Tap the icon again if you want to un-bookmark the page.

Check all bookmarks at Contents/Bookmark. Tap each bookmark to jump to the corresponding page. You can also delete bookmarks here.

## **Annotations**

All highlighted, underlined, and annotated contents are shown in Contents/Annotations. You can check, edit, and delete all relevant content here.

Tap each content to jump to the corresponding page. All contents under Annotations can be exported in txt format. The default saving path for the exported contents is Storage/ note/ a file with the same name as the original

document. You can also export the contents to a third-party notes app. Go to System Settings/Accounts to bind third-party apps (Currently Dropbox is supported).

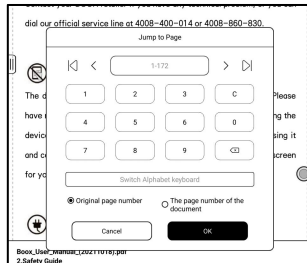
## **Handwriting**

All pages with handwritten notes are shown in Contents/Handwriting. You can check and delete the relevant pages. Tap each page thumbnail icon to jump to the corresponding page. All pages with handwritten notes can be exported in PNG images. The default saving path for the exported contents is Storage/ note/ a file with the same name as the original document.

## **Progress**

Here it shows a chapter name of the current document (if no chapter name, the document name will be shown), progressing page number, Previous/Next chapter, page number, Automatic Page-turns, Redo and Undo, etc.

Tap the page number to pop out the Jump-to-page dialog box. Enter the page number that you want so as to jump to the relevant page.

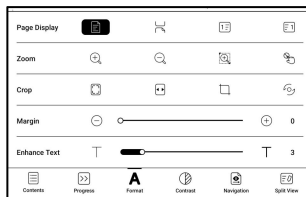


You can search the built-in page numbers of PDF documents. (The custom page numbers)

## Format

**Page Display:** switch between single-page mode, dual-page mode 1, and dual-page mode 2.

The dual-page mode only supports a landscape screen.



**Zoom:** You can zoom in/out the whole page, zoom in the marquee area, or pinch-to-zoom any area you want.



**Crop:** Tap relevant functions to automatically crop all blank areas, or blank areas only on the left and right, or the marquee area.

**Margin:** This is for the margin you want to keep for automatic crop. You can adjust it to the size you want.

In zoom-in status, when the zoomed-in page exceeds the screen area, you can drag the page around to check different areas. A single tap only turns sub-pages. Tap the Virtual Buttons to turn the whole page.

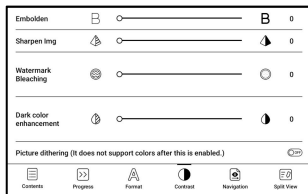
## Contrast

**Embolden:** only embolden text

in PDF

**Sharpen Img:** Make blur image

sharper



**Watermark Bleaching:** Bleach the light-color images or background on the page

**Dark Color Enhancement:** Adjust for the whole page or only the text, making the display darker;

**Picture dithering:** Optimize the display effect of pictures with gradient colors;

## Navigation

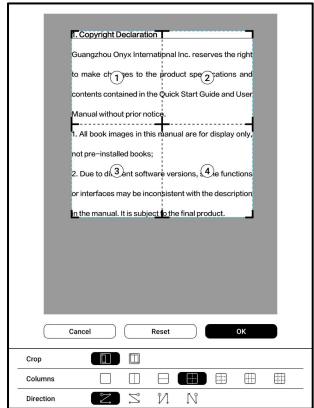
This section includes Comic Mode, Article Mode, Reflow, and more custom settings. You can crop a scanned PDF, divide it into columns, and set its browsing orders.

## Navigation / More

**Crop:** You can manually crop the blank margin in either single-page or dual-page modes.

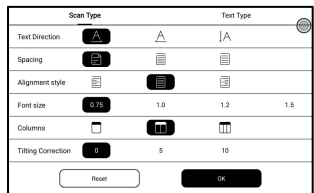
**Columns:** Divide the current doc into different columns

**Direction:** Set the reading order of the divided columns



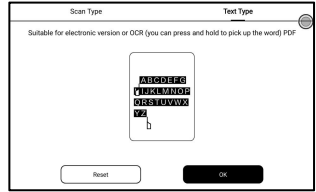
## Reflow

Only apply to PDF\DJVU\CBR\CBZ in scanned version and text-based version.



## Reflow scanned documents

You can adjust Text Direction, Spacing, Alignment, Font Size, Columns, Tilting Correction.



## Reflow text-based documents

Apply to digital or OCRed PDF. After being reflowed, the document can use flow-document functions.

## Split View

You can choose to split documents vertically or

horizontally into two windows. You can swap the sides of the two split windows.



Current Doc Only: Display 2 different pages of the current document at the same time.

Current View Doc & Another Doc: Display the current document

and another document at the same time.

Doc & Notepad: Display the current document and Notes app at the same time

Doc & Translate: Display the current document and Translate at the same time.

## **Reading Menu at the bottom (Free Flow Documents)**

The menu includes Contents, Progress, Format, Contrast, and Split View and supports free-flow formats such as EPUB\TXT\MOBI\AZW3

## **V2 Engine**

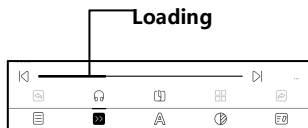
Some free-flow formats such as

ePub\Mobi\azw3\txt\word\jeb\html use V2 Engine by default. You can go to reading Settings / Other settings to change to NeoReader.

V2 Engine supports the original layout of the document, including font, line spacing, margin, graphic typesetting, indentation, etc. When being switched to V2 Engine, the document will be closed automatically. Next time when you open the document again, V2 Engine will be used. If you want to switch to NeoReader, you can disable V2 Engine and reopen the document.

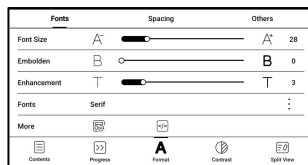
## Progress

The document needs to be paginated again after switched to V2 engine or font and spacing adjusted. You can check the pagination progress in the reading Menu/Progress. After the progress bar is loaded, it means the pagination is completed. You can drag the progress bar or jump to another page after the pagination is completed.



## Format

**Fonts:** You can import your own fonts to use. Save your fonts to Storage/fonts. When you open a document, the fonts will be detected. The settings such as font size, typeface, contrast,



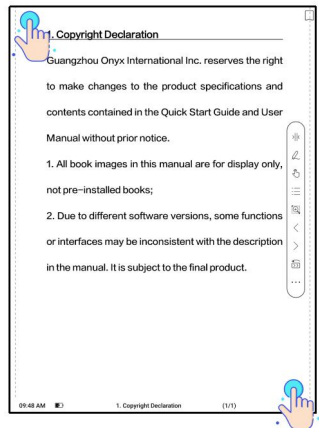
bold, spacing only work on the newly opened documents but do not work on the documents opened before the settings.

If you want to restore the original format of the document, you can tap the Restore Original Format icon.

## Screenshot

Tap the two corners (shown in the pic) on the screen at the same time to take a screenshot (PNG format). This function is only available on the reading page.

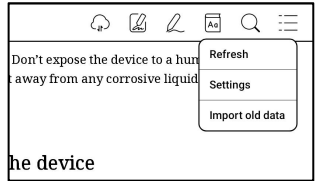
The screenshot can be saved to local storage, shared by scanning QR code and other means. The local saving path is Storage\Screenshots



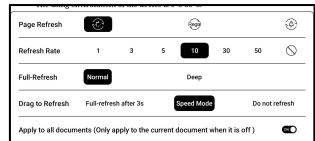


## Refresh

Tap the hamburger menu on the upper right corner to choose Refresh settings.



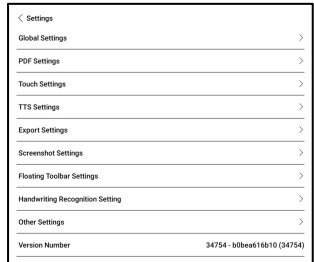
When you drag a page, speed mode is used by default.



Deep full-refresh is recommended for documents with a lot of images and darker background to reduce ghosting during reading.

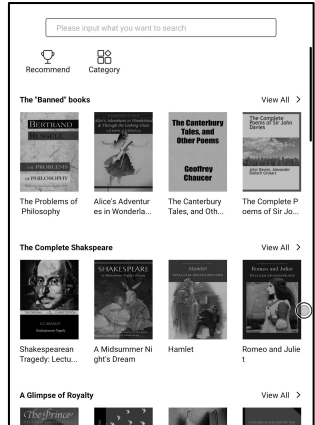
## Settings

Tap the hamburger menu on the upper right corner to go to reading-related settings such as Global Settings, PDF Settings, Touch Settings, TTS Settings, Export Settings, Screenshot Settings, Floating Toolbar Settings, Handwriting Recognition Setting, Other Settings, and Version Number.



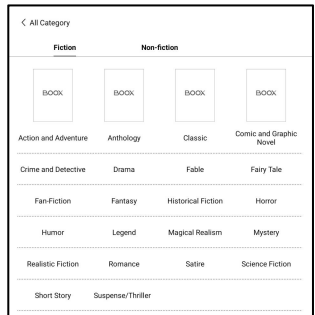
## 6.3 Store

In the language of non-Chinese, the Store is offering free publications E-books from the Internet.



## Category

Books can be screened according to different categories.



## Book Detail

Click a book cover to open up book detail. The specific book information. Click “Full Edition Download” to download the book, then you can see this book cover in Library .

The screenshot shows a book detail page for "The Prince" by Machiavelli, Niccolò. At the top left, there is a back arrow and the text "Book Details". Below this is a book cover for "The Prince" and the author's name. To the right of the cover, the title "The Prince" and author "Machiavelli, Niccolò" are displayed. Below the title and author, there is a button labeled "Full Edition Download". Underneath the button, the word "Introduction:" is visible. Further down, there is a copyright notice "© Copyright". Below the copyright notice, there is a section titled "Book Recommendation" with a link to "Another batch". This section displays a grid of book covers with their titles: "Herakleitos", "The American I...", "Historias de fil... e Principes", "Lips Tullian und seine Baude...", "The Glided Age", "Invaders from t... he Infinite", "The Last of the Bushrangers...", "Anderson Crow, Detective", "Camilla", and "英荷一豆知源毛 (紀盛編)".

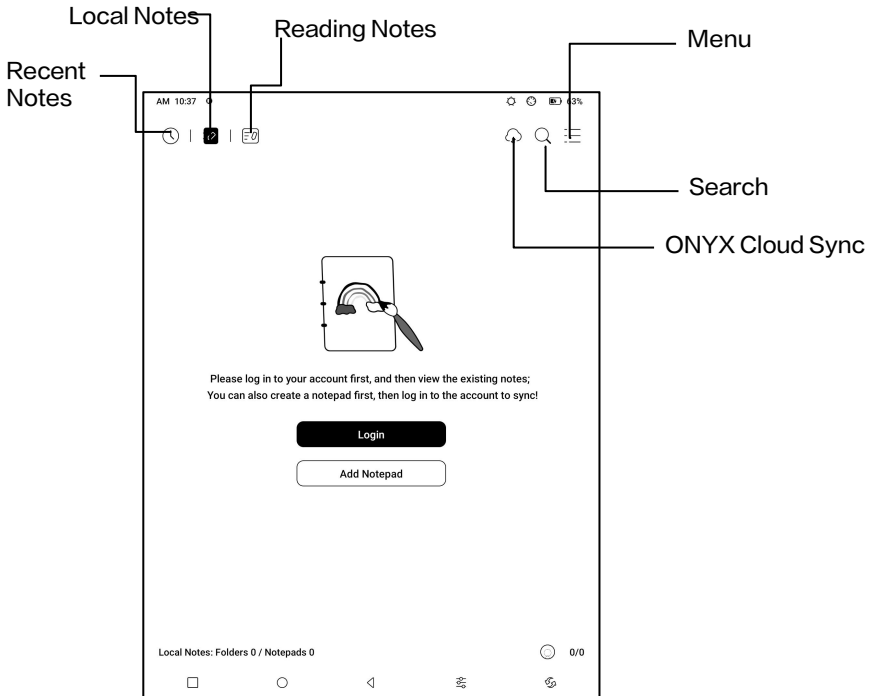
## 6.4 Notes

This interface includes Recent Notes, Local Notes, and Reading Notes.

Recent Notes: Display 12 recently opened notepads

Local Notes: All notepads created in Notes app

Reading Notes: notes from Split-view in NeoReader



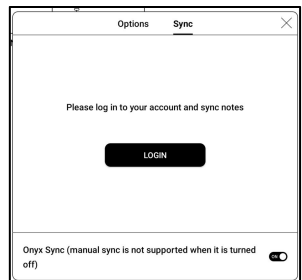
## ONYX Cloud Sync ( In Bulk )

After Onyx account is logged in, the sync function is on by default.

When you open an existing notepad, notes will be retrieved from the cloud. When you close a notepad, notes will be synced to the cloud. The notepad list and content are synced respectively. It may take longer to sync the notepad content. Please wait and check until the sync is completed. Check synced notes at BOOX Assistant app or [push.boox.com](http://push.boox.com).

## Sync individual notepad

Long press a notepad cover to pop out Property dialog box for checking sync status. Tap the



Sync icon to resync if there is a sync issue. You can turn off the sync function for individual notepad. You can also turn off the sync function of all notepads from Sync Settings in the menu.

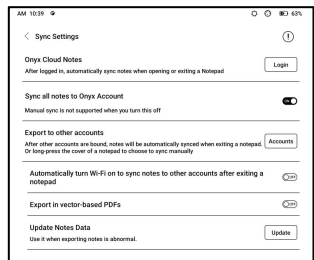
## Menu

Here includes Create a Folder, Manage in bulk, Sort by, List Mode/ Cover Mode, Sync Settings, Options, and Recycle Bin.

## Sync Settings

### ONYX Cloud Sync

After you log in to Onyx account, the notes will be automatically



synced to Onyx Cloud when you open and close a notepad.

Or you can tap the Sync icon on the Toolbar to manually sync notes. If you do not want the sync function. You can turn it off from Sync Settings.

### **Sync to other accounts (export)**

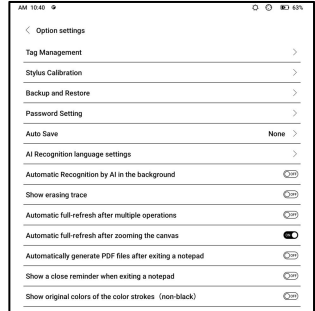
After you bind a third-party sync app to your BOOX, the notes will be automatically synced to the app when you close a notepad.

The 3rd-party app sync is one-way export. You can export your notes in PDF or PNG to a 3rd-party app, but you cannot sync the notes back to your BOOX. No need to log in to your Onyx account.



## Options

This covers general settings for notes, including Stylus Calibration, Backup and Restore, AI Recognition language settings, Password Settings, Show erasing trace... etc.



## Backup and Restore

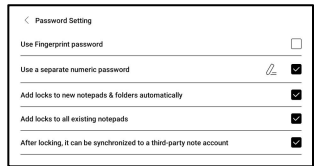
You can back up and restore your notes locally. Cloud backup is not supported.

**You can restore the backup data, but restoring the backup data will overwrite the current data. Please perform this carefully.**

## Password Settings

This password is only applicable to notepads in the Notes app.

The password does not follow notepads. Individual notepads cannot have separate passwords.



When a password is set, it is applicable to all notepads. You can remove the password for individual notepads and also lock the notepad with the set password again.

When using a separate numeric password, you can choose to add locks to new notepads automatically. If you untick this option, the newly created notepad will not be locked with the set password. You need to add the lock manually.

When a notepad is protected with a password, its cover does not show a thumbnail view of your notes.

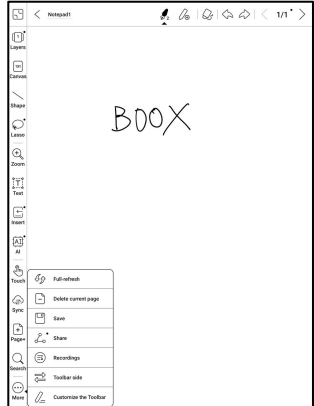
You can long press a notepad cover to pop out Options to add a lock to the notepad or unlock it.

## Notepad Interface

When you exit a notepad, your notes will be automatically saved. You can also manually save your notes while you are still taking notes.

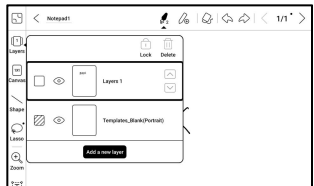
Tapping the page number, you can choose to jump to other pages.

You can customize the side Toolbar to your own preference. The toolbar on the top does not support customization.



## Layers

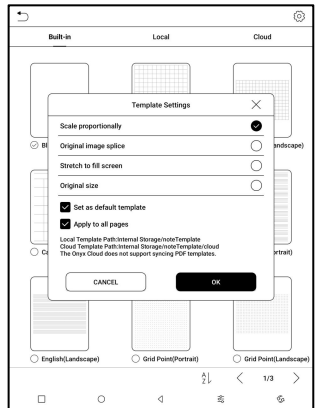
This supports a template layer and another 5 custom layers. You can hide, lock layers and



adjust the layer orders. The hidden layers will not be shown in an exported document and will not be recognized by AI Conversion. When a layer is locked, it does not support any editing.

## Templates

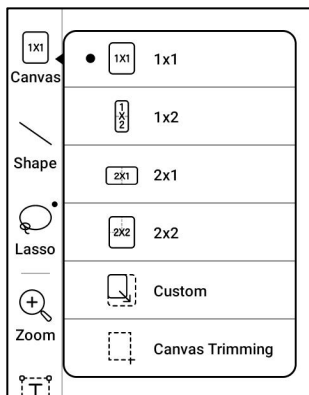
A template can only be added to the Template layer, which cannot be deleted. Template settings include Scale proportionally, original image splice, stretch to fill screen and original size. You are recommended to start writing after determining which template to use to avoid notes misplace if you change the template after you start writing.



## Canvas

The default canvas size is 1x1, the same as the screen size.

You can adjust the canvas size to 1x2, 2x1, or 2x2(max), or customize the canvas size by dragging the canvas.

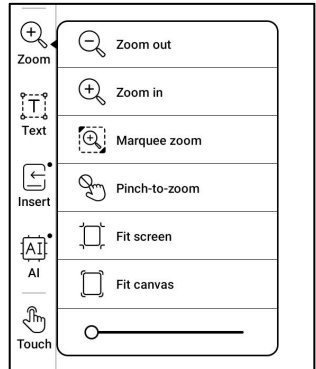


Using the upper left corner as the base, you can extend the canvas by dragging the canvas left or downwards. When you switch from a big canvas to a small canvas, your handwriting outside the canvas area will not be displayed but will be kept.

When you switch to the big canvas, you can see the hidden notes again. Canvas Trimming is to automatically crop the blank part of the canvas by the stroke on the edge of the visible layer.

## Fit Canvas and Fit Screen

When the canvas size is larger than 1x1, you can choose Fit screen or Fit canvas under Zoom in the toolbar to view your notes.



### Fit canvas

The canvas will automatically expand to fill the screen.

When it is larger than the screen, you can long-press the canvas and drag it to view hidden notes.

### Fit screen

The canvas is zoomed out to fit the whole screen. The grey area is not writable.

## Brushes

Support up to 5 pinned brushes.

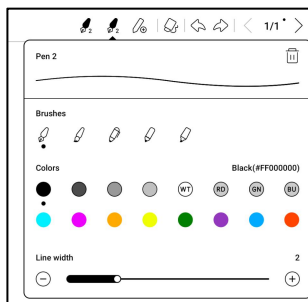
You can preset the types, colors

and line width of the pinned

brushes. Tap any pinned brush

to expand more settings of the

brushes.



## Eraser

When using Mobile Eraser, Stroke Eraser, and Lasso

Eraser, you need to switch back to brush to continue

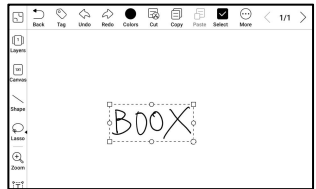
writing. When you choose to erase all notes, it

automatically switches back to brush.

## Lasso

You can use Lasso to select any content in your notepad. After selecting the notes, you want, you can choose to add tags to,

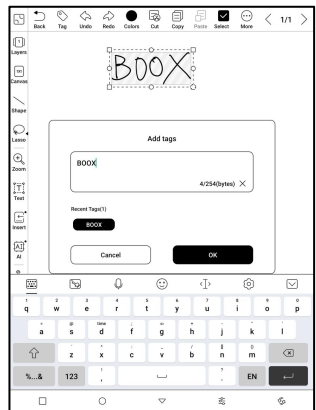
change the colors of, copy, paste, delete, zoom, and move the selected notes.



## Tags

You can use the Lasso tool to select any notes and add tags, which can add identifiers to the selected notes for search recognition.

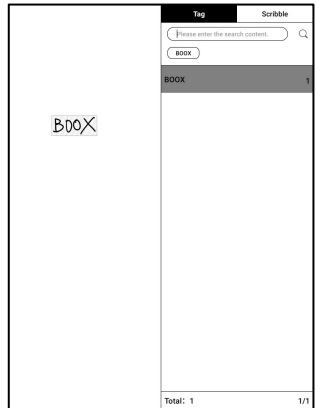
Each selected content can be added up to 5 tags. Images, shapes, recordings, and other attachments do not support adding tags.





## Search tags

The search list shows all tags by default. You can view certain tags by filtering.



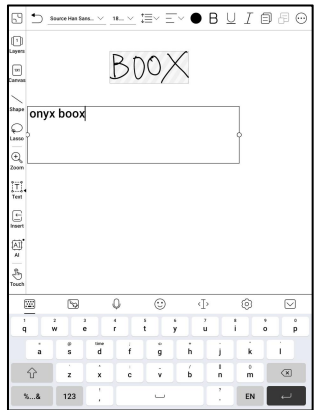
## Tag Management

The tag is a global feature and all notepads share the same tags. Go to Options/ Tag Management to check all tags.

When you delete a tag, the corresponding notes will not be deleted.

## Insert text

In inserted text mode, you can use keyboard to type. The text box can be moved around. You can change the font size and line spacing, embolden fonts, underline, italicize, and delete text.

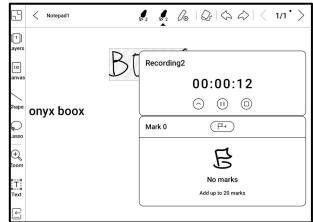


## Insert other attachment

You can insert recordings, images, attachments, links to another page within notepad, and links to external websites.

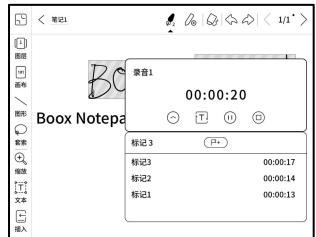
## Insert Recorder

During recording or playing a recording, you can add marks .



## Recording marks

You can add marks to recordings while you are recording. Tap each mark and jump to the corresponding location.



## Insert pictures

You can insert local picture, move, zoom and copy the inserted images. Use lasso tool to select an inserted picture and edit it again.

## Insert attachments

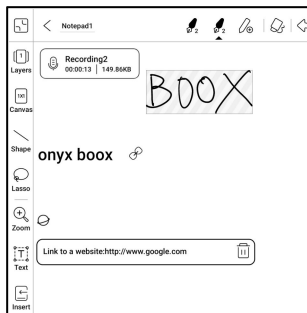
Insert an attachment up to 20MB. The inserted attachments can be synced to Cloud along with the notepads.

## Insert a link to a page

You can insert a link to another page within notepad. Tap the link to jump to corresponding page.

## Insert a link to website

You can insert a link to an external website. Tap the link to open corresponding website.



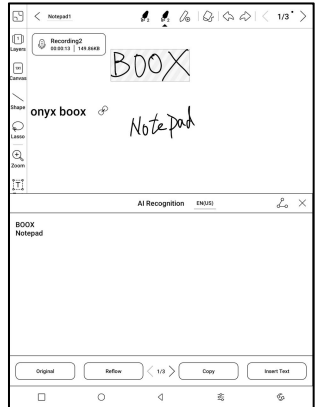
## AI Recognition

Convert handwritten notes into text. English and Chinese are available by default. Other languages require language package download.

The converted text can be directly inserted into the current page.

You can choose either original layout or reflow layout to convert all handwritten notes on the current page.

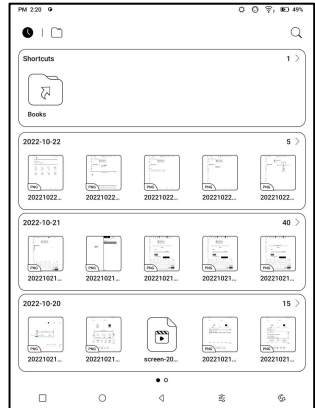
AI converted content is synced based on the original handwritten content. If handwritten content is changed, the content will be re-converted when you start another conversion.



## 6.5 Storage

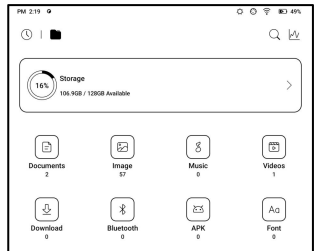
### Recent Files

Here includes Shortcuts and recent files. The recent files are sorted by time in descending order by default and grouped by date automatically.



### Storage

Here includes the storage path and document categories. All files are sorted automatically into different categories by type, but the files' original storage location does not change.



## OTG External Flash Drives

This device supports Type-C

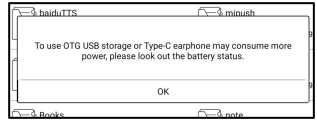
OTG flash drives. After a flash

drive is inserted, the flash drive

will be automatically recognized and loaded as a storage.

OTG devices require a power supply and will increase

battery consumption



## Low storage warning

Please make sure of leaving at least 300MB of storage for

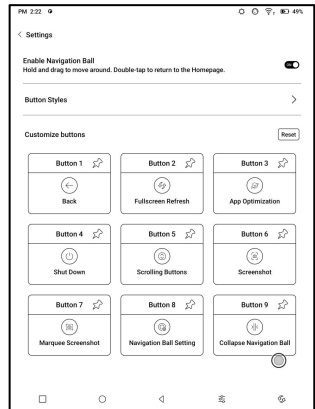
normal system running and relevant data storage. When

the storage is lower than 300MB, the system bar will show

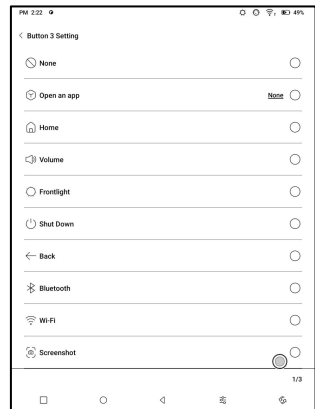
a warning icon for “insufficient storage” .

## 6.6 Navigation Ball

Tap the Navigation Ball to expand or contract it. Its default display style is fan-shaped. You can change to other styles (Horizontal Style and Vertical Style) from the settings. You can also set its opacity by percentage. You can pin any buttons which will always show on the top.



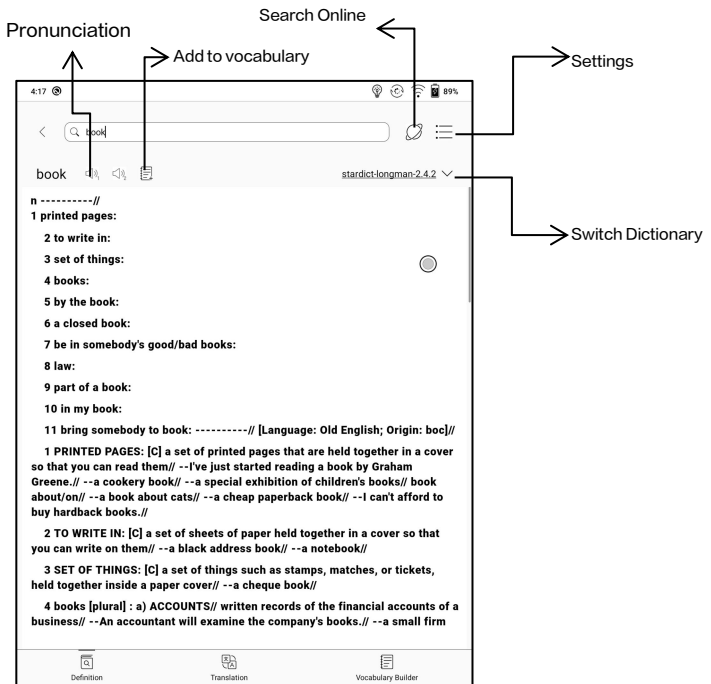
You can customize each button's function. The available functions include some system functions, switching apps, and app optimization.





## 6.7 Dictionaries

When you open Dictionary for the first time and there is no dictionary installed, there will be a notice to lead you to local downloads, which require a Wi-Fi connection. Word pronunciation requires dictionaries with voice files and TTS is currently not supported.



You can import your own dictionary files and save them to the designated storage path: sdcard\dicts\XXX;

Each dictionary has a corresponding folder. For example, dict\Advanced Chinese Dictionary

In dictionary Settings/Preferred Dictionary Setting, you can check all available dictionaries. Up to 20 dictionaries are supported.

When there are dictionaries installed, you can search words in the search box. The lookup results are subject to the words included in the dictionary. If you cannot find a word, please change to another dictionary.

You can add found words to Vocabulary Builder to manage in bulk.

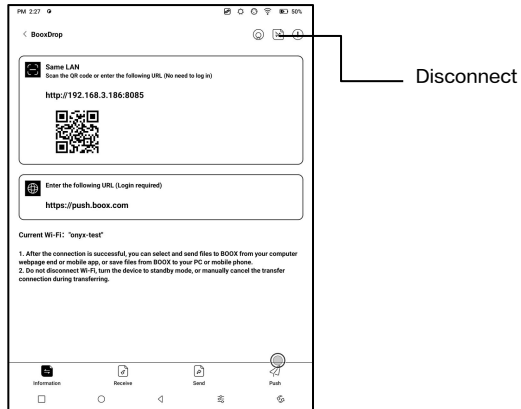
## 6.8 BOOXDrop

Connect your BOOX with a PC or a mobile phone. You can send files to your BOOX from PC or BOOX Assistant app, or saves files of your BOOX to your PC or mobile phone.

How to:

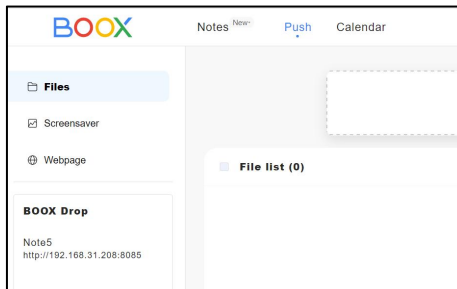
1. Open BooxDrop from Apps page or Control Center.
2. Open a browser on your PC
  - 2.1 No login required: Make sure your BOOX and PC in the same network. Enter the IP address shown on BooxDrop interface to your PC browser to connect.

BooxDrop does not disconnect automatically. If you want to disconnect it, please disconnect it manually or on BooxDrop interface.



2.2 Log in to Onyx Account: open [push.boox.com](https://push.boox.com).

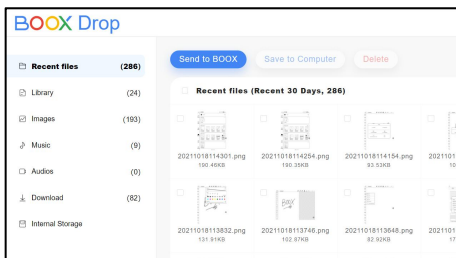
You can see the connected devices and click any device to open.



3. When you open a connected device, it will automatically recognize whether your BOOX and your PC are in the same network. If they are not in the same network, you can not open the page.  
Please change to the same Wi-Fi.
4. When the connection is successful, you can load all folders and files from your BOOX.
5. Send files to BOOX: You can select files on your PC and send to BOOX. All sent files are grouped into corresponding folders based on file formats.  
Recent files: all files are sorted by time and same as Storage/Recent Files  
Library: Books/xxx.epub (including all supported file formats)  
Image: Pictures/xxx.png  
Music: Music/xxxx.mp3  
Audios: Movies/xxxx.mp4  
Download: Download/xxx.xxx (Including

non-books, pictures, mp3, mp4, etc.)

Storage: Send files to the selected storage.



6. Save files to PC: when you select a file from your BOOX on your PC, you can choose a saving path to save to your PC.

## Push History

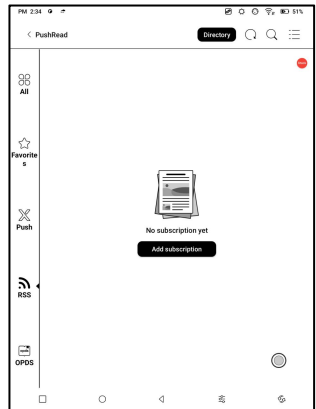
You can only see the Send and Receive history on your BOOX.

## 6.9 PushRead

Aside from Onyx Push, you can use RSS and OPDS in PushRead

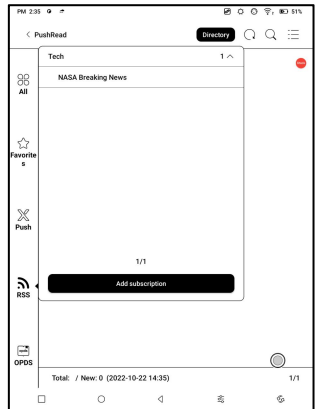
### Onyx Push

You can push webpages to your BOOX via Push in push.boox.com or BOOX Assistant, and read on your BOOX. If you use PushRead for the first time, you need to log in to the same Onyx account on both push.boox.com or BOOX Assistant and your BOOX.



## RSS\OPDS Subscription

You can add subscriptions from the public source list. You can also customize your RSS/OPDS subscription. You need to create a group for the first-time adding RSS subscription source so that the subscription source can be added to the relevant group.



The webpages in PushRead requires internet to load for the first time. After being loaded, it can be read offline.

The default layout is Web Mode (the original webpage' s layout). Tap the center of the screen to bring out the menu where you can switch to Reading Mode, change font size, and fully refresh the screen.



## 6.10 Calendar Memo

In Calendar Memo, it shows

Today's Notes and Today's

Read. Tap to open notes or

books. You can add memo to

each day and set the memo as

screensaver. Please refer to

Screensaver / Calendar

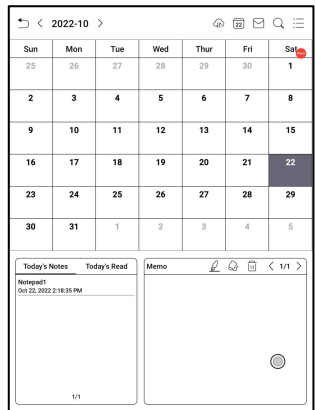
Screensaver for settings.

Currently, the calendar memos do not support sync to

cloud.

After logging in to Onyx account, you can email memos in

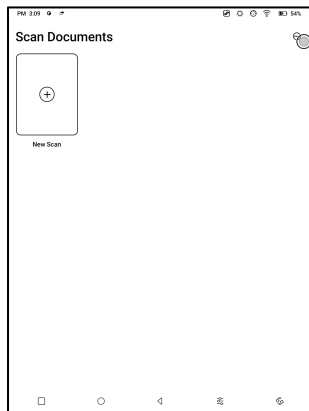
PDF to a designated email address.



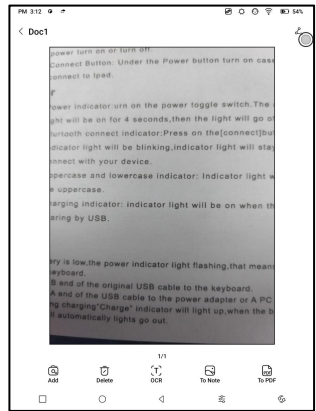
## 6.11 Scan Documents

Support OCR to recognize the text content on the picture after the camera takes a picture;

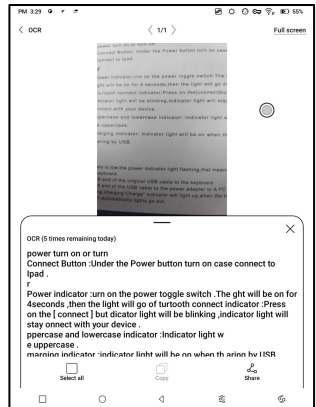
Select New Scan to enter the photographing interface;



After taking photos, enter the photo preview interface, where you can select OCR identification, PNG export, PDF export, etc;



The recognized text can be long pressed to copy, all selected to copy or shared directly;



# 7. System Settings

---

## 7.1 Onyx Account

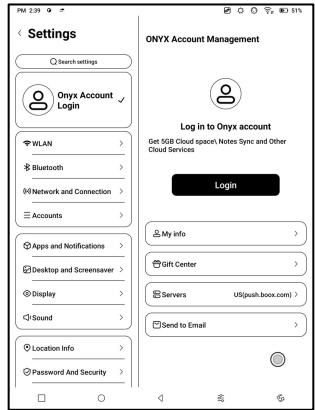
Support multiple accounts and switching between accounts.

You can switch between accounts from the account list.

Only account information is kept

After switching between accounts, you need to log in accounts again. If different

accounts use different servers, the servers will be switched when you log in to another account.



Associated accounts: After you log in to a main account, you can associate the main account with another two login methods. The three login methods share the same account. Mobile phone and E-mail support unbinding and Wechat does not support unbinding.

## **7.2 WLAN (WLAN)**

### **Wi-Fi Setting**

When you turn WLAN on, the device will search all available Wi-Fi. Choose the Wi-Fi you want to use, and enter required information such as password to connect to Wi-Fi. Or turn Wi-Fi on and off from Control Center. Add networks manually by tapping Add Networks.

### **Bluetooth Settings**

Turn Bluetooth on and search nearby available Bluetooth devices. Send connection request. Only when both devices are connected, Bluetooth will work.

### **Network and Connection**

Here includes Flight Mode, Hotspot and Tethering settings, App Data Usage, Screen Cast, Printing, VPN, and Private DNS.

## 7.3 Accounts

### System Account

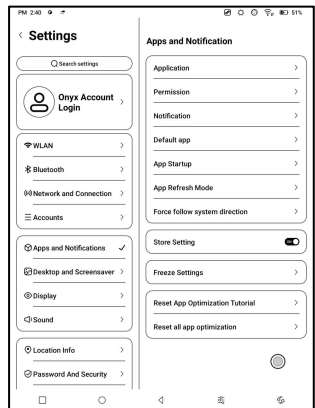
Here includes Google Account, Email App, etc.

### Other Accounts

Here mainly includes the third-party cloud accounts for notes sync.

## 7.4 Apps and Notifications

Here includes Application management, Permission management, Notification management, Default app, App Startup, App Refresh Mode, Store Settings, Freeze Settings, Reset App Optimization Tutorial, and Reset all app optimization.



## **App Startup**

Only for auto-starting apps. If enabled, it may increase memory usage and power consumption.

The app itself must have the function of monitoring system to automatically start up. After installing the APK, you need to manually open the app to run it once;

After the startup is successful, it only runs in the background and will not be displayed in the recent running tasks;

## **App Refresh Mode**

You can manage refresh modes of third-party apps in bulk.

## **Freeze Settings**

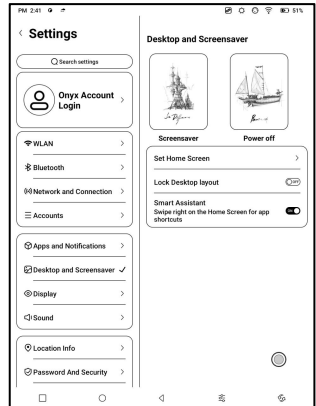
You can freeze third-party apps here. Freezing apps that are running in the background can reduce power consumption.

## Reset App Optimization Tutorial

When you open third-party apps for the first time, an App Optimization tutorial will pop up. If you want to see the tutorial again, please reset the App Optimization Tutorial [here](#).

## 7.5 Desktop and Screensaver

You can set Home Screen, choose to lock the desktop layout, and enable Smart Assistant. Only one power-off image can be used.





## **Screensaver**

Support Image Screensaver(default), Memo Screensaver, Clock Saver, and Transparent Saver. For Image Screensaver, when you select only one image, the screensaver stays static. When you choose more than one images, the screensaver will play all the images repeatedly.

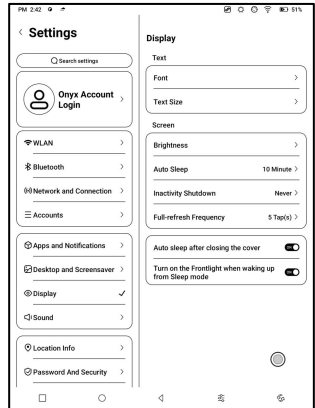
## **Power-off Image Setting**

You can set Power-off image along with settings including “Show text on power-off screen, Text Position, Image zoom method. (When image ratio is different from screen, the image cannot be used.)

## 7.6 Display

### Text

You can adjust the system font, font size. When you choose largest font, some interface text may be covered due to short of display space.



### Screen

You can adjust screen brightness, set Auto Sleep and Inactivity Shutdown time, and set full–refresh frequency.

## 7.7 Sound

You can set volume, ringtone, mute, and Do not disturb.

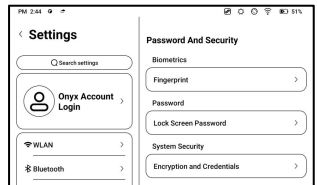
## 7.8 Location Info

You can enable “Access my location information” , and “Location Permission.

## 7.9 Password and Security

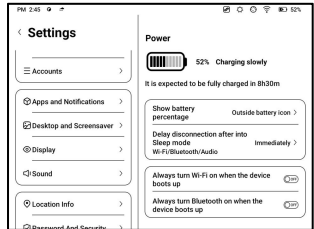
Support 6–digit Lock–Screen password,

Android 11 does not support resetting password. Please keep your password safe.



## 7.10 Power

You can check battery usage and choose whether to delay disconnection after your device goes into sleep mode, whether always to turn Wi-Fi on when the device boots up, and whether always to turn Bluetooth on when the device boots up.



## 7.11 Storage

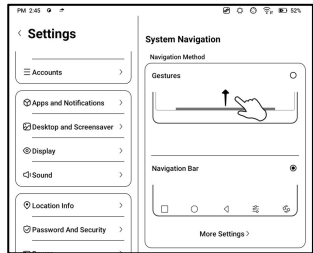
You can check the storage usage here.

## 7.12 System Navigation

You can choose system navigation method, either by Gestures or by Navigation Bar.

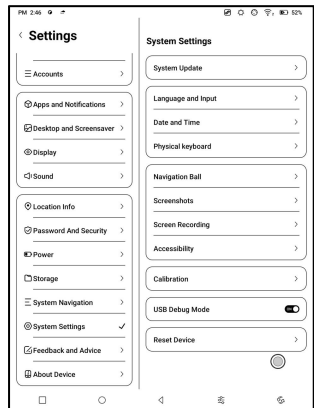
There are 3 bottom gestures and 2 side gestures for Gesture

method. There are two combinations of navigation buttons for Navigation Bar.



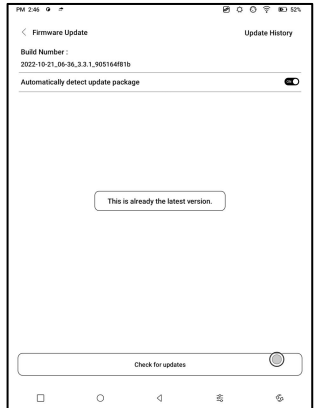
## 7.13 System Settings

Here includes System Update, Language and Input, Date and Time, Navigation Ball, Screenshots, Screen Recording, Accessibility, Calibration, USB Debug Mode, and Reset Device.



## System Update

By default the system will check update package locally first, then check from cloud. If a firmware update is detected, it will be downloaded automatically. Download can be paused in progressing, and resumed later.



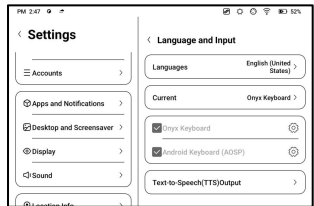
When an update package is downloaded successfully, you need to manually choose whether to update your BOOX.

**Before updating, please ensure 20% of battery and enough storage space.**

## Language and Input

You can set system language, Keyboard, and Text-to-Speech

Onyx Keyboard is used by default. You can install



third-party keyboards and select keyboards here.

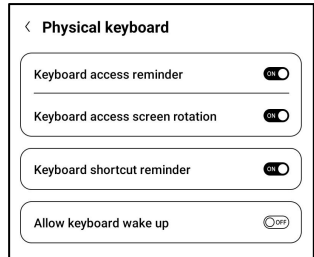
## ONYX Keyboard

Support keyboard input, handwriting input, and voice input.

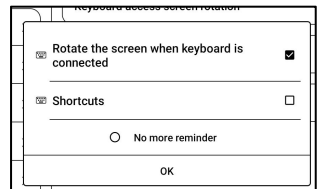
You can activate it when using it for the first time. Chinese system uses Chinese handwriting input by default. Other languages use English handwriting input by default. Other languages require downloading relevant language package.

## Physical keyboard

Only the pogo pin interface Cover keyboard provided by ONYX is supported (purchased separately);



When the keyboard is connected, the device will automatically rotate to the horizontal screen mode and



prompt whether to display the prompt pop-up window for shortcut keys. You can turn it off without relevant prompts;



# Date and Time

You can choose to set time manually or automatically.

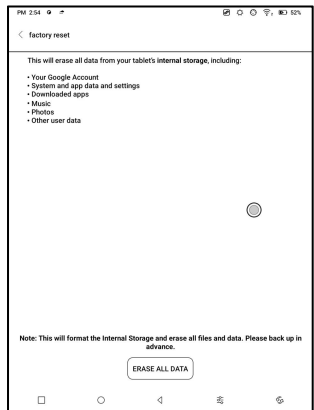
When your device is connected to internet, the system will set time automatically according to internet time.

**Note:** In order to ensure normal server connection of third-party apps such as Kindle, you are recommended to set time automatically according to internet time.

## Reset Device

**Note:** when resetting device, you will clear all user data.

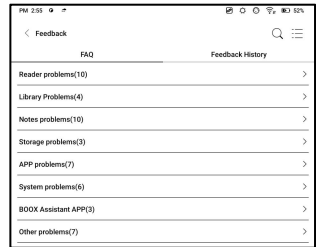
Please back up your data in advance and operate this carefully.



## 7.14 Feedback and Advice

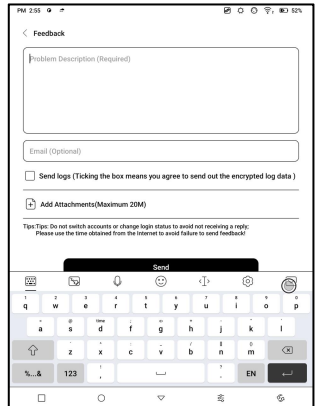
### FAQ

Here contains those frequently asked questions. If you have any questions, you can find the relevant questions here.



### Feedback

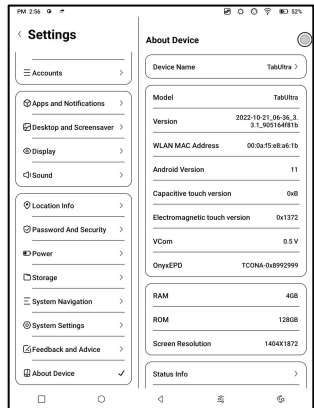
You can add attachments such as documents or pictures to your feedback, which will help us quickly locate the problems. When the device is turned off, the feedback history will be cleared. If you do not want the history cleared out, you can go



to Settings to enable “Save logs to local storage before rebooting the device. This option will collect relevant logs which will help us to evaluate the issues. We will not disclose any relevant information of your device. If you have any doubt, you can untick “Send logs” .

## 7.15 About Device

This contains device information such as device model and name, firmware version, MAC address, electromagnetic touch version, capacitive touch version, etc.



## **8.Thank you for your support**

---

Thank you very much for your support. More product-related information can be found on our official website: [www.boox.com](http://www.boox.com)

If you have any questions, please contact us by email: [support@boox.com](mailto:support@boox.com)