

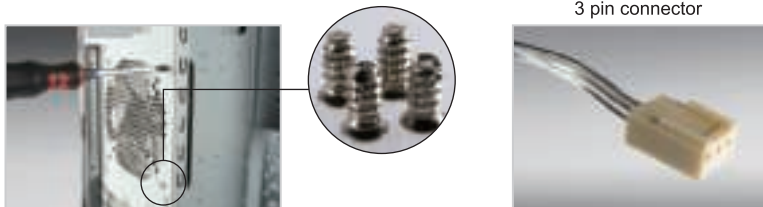
# T.B.SILENCE



■ **The package includes :** • T.B.SILENCE fan \* 1    • Screws \* 4    • 3 pin to 4 pin adaptor \* 1

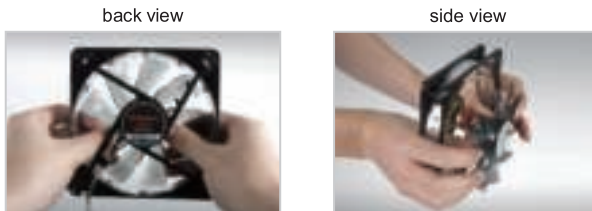
## ■ Installation:

1. PC power off at all times during installation
2. Please see the right figure for the airflow directions
3. Install the fan on the case with the 4 screws
4. Connect the 3 pin connector to a specific 3 pin 12V header on the motherboard. Or attach the enclosed 3 pin to 4 pin adaptor to your power supply



## ■ Detaching fan blades:

Carefully push out the fan blades with your thumbs in the inner area



## ■ Reattaching the fan blades:

8 9 12 cm fan

Press the center of the blades towards the frame until it clicks



14 cm fan

1. Put the blades back into the frame gently
2. Turn around the fan and put it onto a table
3. Press the center of the frame towards the table until it clicks

