

# SKILLER PRO+



Manual



## Table of Contents

<b>1. Keyboard Features</b>	<b>3</b>
<b>2. Software Features</b>	<b>3</b>
<b>3. Keyboard Specifications</b>	<b>3</b>
<b>4. Package Contents</b>	<b>4</b>
<b>5. The Skiller PRO+ at a Glance</b>	<b>4</b>
5.1 Lighting Color Change	5
5.2 Profile Keys	5
5.3 Macro Keys	5
5.4 Function Keys with Preset Multimedia Actions	5
5.5 Profile LED Status Display	5
5.6 Lighting Effect	5
5.7 Gaming Mode Deactivated	5
5.8 Other Shortcuts	6
<b>6. Connecting to the PC</b>	<b>6</b>
<b>7. Installation of the Gaming Software</b>	<b>6</b>
<b>8. Configuration of the Gaming Software</b>	<b>7</b>
8.1 Launch Program	7
8.2 Main Control	8
8.3 Assign Keys	10
8.4 Create Game Profile	10
8.5 Save Game Profile	11
8.6 Load Game Profile	11
8.7 Edit Game Profile	11
8.8 Macro Manager	11
8.8.1 Record Macro	11
8.8.2 Edit Macro	12
8.8.2.1 Record Additional Keystrokes	13
8.8.2.2 Insert/Edit Delay Time	13
8.8.2.3 Delete Recordings	14
8.8.3 Delete Macro	14
8.9 Reset to Factory Default	14
<b>9. Macro Settings</b>	<b>15</b>
9.1 Key Selection	15
9.1.1 Assign Macro	16
9.1.2 Media Player	16
9.1.3 Basic	16
9.1.4 Standard	16
9.1.5 Assign Shortcut	16
9.1.6 Deactivate	16
9.2 Color Settings	16
<b>10. Advanced Settings</b>	<b>17</b>





## 1. Keyboard Features

- Gaming Keyboard with 7 LED Colors
- Adjustable Lighting Effect: 10% - 100%, Pulsating Single Color, Pulsating Changing Colors, Off
- 9 Multimedia, 6 Macro and 3 Profile Keys
- Individually Configurable Key Functions
- 3 Game Profiles with Automatic Activation at the Start of the Game
- Multi-Key Rollover Support
- Max. Polling Rate: 1,000 Hz
- Onboard Memory
- Integrated Palm Rest
- 3-Block Layout
- Gold-Plated USB Plug

## 2. Software Features

- Free Programming of Key Functions in Games and Other Applications.
- Supports Three Different Game Profiles.
- Free Programming of the Key Functions including Macros, Macro Loops, Delay Time and Multimedia Actions.
- 7 Color Backlight Illumination Customization and Pulsating Effect Option.
- Polling Rate Customization and Windows Key Deactivation.
- Adjustable Key Response Time.

## 3. Keyboard Specifications

Switch Technology	Rubber Dome
Connector	USB
Cable Length	150 cm
Input Voltage	5 V
Operating Life Cycles of Keys	Min. 10 Million Keystrokes
Dimensions (L x W x H)	480 x 190 x 32 mm
Weight incl. Cable	888 g



## 4. Package Contents

- Skiller PRO+
- CD with Software and Manual
- Set Anti-Sliding Stand

### Note:

Should any of the above items be missing, please contact our customer service by E-mail:  
support@sharkoon.com (Germany and Europe)  
support@sharkoon.com.tw (International)

## 5. The Skiller PRO+ at a Glance




- (A) Lighting Color Change
- (B) Profile Keys
- (C) Macro Keys
- (D) Function Key
- (E) Function Keys with Preset Multimedia Actions
- (F) Profile LED Status Display
- (G) Lighting Effect
- (H) Gaming Mode Off

Some Skiller PRO+ keys are preset with additional functions. These functions can be activated by pressing the Function Key.





## 5.1 Lighting Color Change (A)

Press Function Key  + Pause Break , to switch to different colors.

## 5.2 Profile Keys (B)

The profile keys quickly and easily switches through game profiles 1 - 3.

### Note:

Once a profile has been activated and the keyboard is switched to the Gaming Mode the Windows Key is disabled by default. This however can be customized for each Game Profile via software.

## 5.3 Macro Keys (C)

These six keys can be individually programmed and allow quick access to the preset functions (see 9).

## 5.4 Function Keys with Preset Multimedia Actions (E)



The preset multimedia actions are launched by pressing the Function Key and the F5 - F12 keys:

Key Combination	Function
FN + F5	Play/Pause
FN + F6	Stop
FN + F7	Previous Track
FN + F8	Next Track
FN + F9	Open Media Player
FN + F10	Mute
FN + F11	Volume Down
FN + F12	Volume Up



## 5.5 Profile LED Status Display (F)

The profile status LEDs indicate in which Game Profile the keyboard is currently.

## 5.6 Lighting Effect (G)

Press the Function Key  + Scroll Lock , to adjust the light intensity from 10% - 100%, Pulsating Single Color, Pulsating Changing Colors, Off.

## 5.7 Gaming Mode Deactivated (H)

Press the Function Key  + Prt Scr , to turn the Gaming Mode off. When the Gaming Mode is disabled the keyboard switches to Standard Mode and the Profile Status LEDs turn off. In this mode only the basic features of the keyboard and the Windows Key are available.





## 5.8 Other Shortcuts

Key Combination	Function
FN + F1	Key Response Time Getting Slow
FN + F2	Key Response Time Getting Fast
FN + F3	Polling Rate Getting Slow
FN + F4	Polling Rate Getting Fast
FN + Windows Key	Interchange of Function WASD - Arrow Keys

## 6. Connecting to the PC

1. Connect the USB plug of the Skiller PRO+ to an available USB port on your PC.
2. The operating system will automatically recognize the Skiller PRO+ keyboard and install all necessary drivers.
3. If the Skiller PRO+ is not recognized, disconnect it and try a different USB port on your PC.

## 7. Installation of the Gaming Software

Before starting with the installation of the included Gaming Software, ensure that there is no other keyboard software installed on your PC. If you have other software already installed, please uninstall before continuing.

1. Insert the CD into your CD/DVD drive.
2. Open the drive that contains the CD (e. g. D:\).
3. Open the folder "Gaming Software".
4. Run the executable setup file "Skiller PRO+ Configuration Setup" and follow the onscreen instructions.






5. Click "Finish" to complete the installation.


Once installation is complete, the Skiller PRO+  icon will be shown in your taskbar. The gaming software has now been successfully installed on your PC.

## 8. Configuration of the Gaming Software

### 8.1 Launch Software

To launch the software, double-click the Skiller PRO+ icon  in your Windows taskbar.

#### Note:

The gaming software runs continuously in the background while your PC is running. This is necessary to ensure all functions of the Skiller PRO+ are always available. The Skiller PRO+ icon  will stay displayed in the taskbar while the gaming software is running.

# SKILLER PRO+



## 8.2 Main Control



The Main Control tab is where you can create, edit, save or load your Game Profiles or make single key assignments that suit your personal needs. Access to the Macro Settings and Advanced Settings is also available. If necessary, you can also reset all settings to factory default.





# SKILLER PRO+



- (A) Click to select the desired profile. An active profile is highlighted in white. All changes must be confirmed by clicking the "Apply" button.
- (B) Create, edit, save or load a profile.
- (C) Launch the Macro Manager.
- (D) Every single key can be individually assigned.
- (E) Reset all settings to factory default.





### 8.3 Assign Keys

When moving the pointer over a key, the orange color indicates the possibility for it to be configured. To make a key assignment, select a key. The key will then be highlighted. By clicking the left mouse button, you can access the "Assign Keys" menu.

The current key setting will be displayed in red.

You can assign a single key. Press "OK" to confirm your setting. The key will be displayed in blue afterwards within the layout. This gives an overview of all keys with changed assignments and eases the re-editing or reset.

To activate the changes in the profile, click "Apply".



### 8.4 Create Game Profile

You can save your individual profile settings in order to reload them later or assign them to a different game profile. Also, you can assign the game profile to a game or other application. If you start the game, the game profile with all its settings will be automatically activated.

To create a game profile, select "Create Profile".

Assign a name in the text field below "Profile Name" and, optionally, select a game or application where the profile shall be activated with.

Select "OK".

The game profile is now setup and can be saved in the Main Control.

**Note:**

If a game or application has been assigned to more than one profile, then the lowest numbered profile will be activated.





## 8.5 Save Game Profile

To save the Game Profile, click “Save Profile” within the Main Control or Macro Settings.

Assign a file name and save the Game Profile in .gkp format.

**Note:**

As a default setting, all Game Profiles will be saved into the “config” folder within the Skiller PRO+ installation folder, however, you can still select an alternative location to save your profiles.



## 8.6 Load Game Profile

To load or activate a previously saved Game Profile, click “Load Profile” and select the desired Game Profile from the list.

## 8.7 Edit Game Profile

To edit or update an activated Game Profile, click “Edit Profile”. After your changes, the Game Profile needs to be saved again (see 8.5).

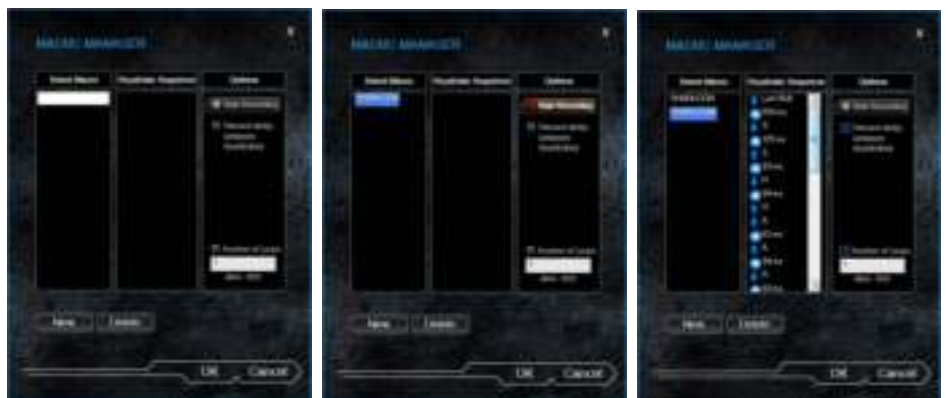
## 8.8 Macro Manager

Here you can record, edit and delete macros.

### 8.8.1 Record Macro

Through the Macro Manager you will reach the input screen. To create a new macro, select “New”. First, assign your macro a name (max. 15 characters) and finish by pressing the Enter key.

Your macro will now appear highlighted in blue. If needed, you can record the delay time in-between the keystrokes or select the number of loops. These selections are available in the Macro Manager, under “Options”.





You may now start recording your macro. Select “Start Recording” and input your keystroke sequence. To end the recording process, click “Stop Recording” on the right side under “Options”. Press “OK” to leave the Macro Manager. Your macro has now been saved and can be used in any of the profiles (see 9.1.1).

Note:

Per macro, you may record a maximum of 25 keystroke sequences. Once the maximum number of keystroke sequences has been reached, the recording will be stopped automatically. The maximum number of loops is 255.

### 8.8.2 Edit Macro

Each keystroke can be edited, adjusted or deleted in the Macro Manager.

To make changes, open the Macro Manager and select the macro you wish to edit. The macro is now highlighted in blue and, in the “Keystroke Sequence” column, all recorded keystrokes will be listed and delay time shown in milliseconds. All inputs are recorded sequentially within the Macro Manager. Your first input is shown at the top of the list.

Changes can be made by pressing the right mouse button within the column “Keystroke Sequence”.

Make your selections (e.g. recording further keystrokes, insert or edit delay time).





## 8.8.2.1 Record Additional Keystrokes

Additional keystrokes can be recorded through the “Start recording before” or “Start recording after” functions. Select the keystroke you wish to record before or after. Click either “Start recording before” or “Start recording after” and make your inputs. To stop recording, click “Stop Recording” under “Options”.

**Attention:**

When editing keystroke sequences, ensure to start recording *always* with the functions “Start recording before” or “Start recording after”. To stop recording, use the function under “Options”.



## 8.8.2.2 Insert/Edit Delay Time

Select a command within the keystroke sequence where you wish to add a delay before. Click the right mouse button to open the selection menu. Select “Insert Delay”. The delay will now be inserted with the standard value of 1 ms. This value can be adjusted through the function “Edit Delay”.

To make a change, select the delay time you wish to change by clicking the left mouse button. The delay is now highlighted in blue. Click the right mouse button to open the selection menu and select “Edit Delay”. You can now insert the time in milliseconds. Confirm changes by pressing the Enter key.





### 8.8.2.3 Delete Recordings

All keystrokes and delay time can be separately deleted. Select the command you want to delete from the keystroke sequence. The command is now highlighted in blue. Click the right mouse button to open the selection menu. Select "Delete". The item is now removed from your keystroke sequence.

Note:

In case the edited macro was already assigned to a key, you will need to reassign it (see 9.1.1) and confirm your change within the profile by clicking "Apply". Only then will it be updated.

### 8.8.3 Delete Macro

To delete a macro, open the Macro Manager and select the macro you want to delete. The macro is now highlighted in blue. To delete it, click "Delete". A warning will appear. After you reconfirm, the macro will be deleted.

Note:

In case the deleted macro is still assigned to a key within the Macro Settings you need to reset the key (see 9.1.4). Otherwise the macro will be still saved in the onboard memory of the keyboard.

## 8.9 Reset to Factory Default

This function resets all profile and macro settings to the factory default.





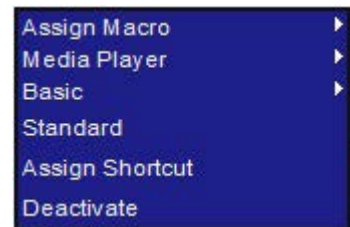
## 9. Macro Settings



Within each profile, 6 keys can be assigned with either macros or additional functions.

### 9.1 Key Selection

To assign a new function, move the pointer into the box next to the key and click the left mouse button. A selection menu with the available functions will open (e.g. Assign Macro, Media Player, Basic, etc.).





### 9.1.1 Assign Macro

To assign a macro, select "Assign Macro". You may also access the Macro Manager to record your own macros (see 8.8).

If you have already recorded macros in the Macro Manager, you can find and select them directly from the list. Confirm your selection by clicking "Apply".

Note:

Active macros will be shown within the selection in blue.



### 9.1.2 Media Player

Select the functions of the Media Player and assign them to a key. Confirm your selection by clicking "Apply".

### 9.1.3 Basic

Select the functions of the Web Browser, Calculator, E-Mail and My Computer. Please note that the functions are always applied to the default software of your system. If necessary, change your system settings. Confirm your selection by clicking "Apply".

### 9.1.4 Standard

Reset the key to its standard setting. Confirm your selection by clicking "Apply".

### 9.1.5 Assign Shortcut

This function allows you can assign a shortcut to a single key. Combinations of multiple keys (e.g. Ctrl + Alt + Del) is also possible. Confirm your selection by clicking "Apply".

### 9.1.6 Deactivate

This function deactivates the key completely. Confirm your selection by clicking "Apply".

## 9.2 Color Settings

The color for the illumination of the keyboard in each game profile can be changed in the option "Color Settings", by clicking on the respective color it will be adjusted. Therefor are seven different colors to choose from. To update the changes in the profile, click "Apply".







## 10. Advanced Settings



In the Advanced Settings menu, adjustments for each profile can be made:

- Polling Rate: 125 Hz, 250 Hz, 500 Hz or 1,000 Hz
- Windows Key: On/Off
- Lighting Effect: 10% - 100%, Pulsating Single Color, Pulsating Changing Colors, Off
- Key Response Time: 1 ms -16 ms

Confirm your selection by clicking "Apply".

### Note:

The Lighting Effect can also be changed directly via the keyboard by pressing the key combination Function Key + Scroll Lock .



## **Legal Disclaimer:**

For potential loss of data, especially due to inappropriate handling, SHARKOON assumes no liability. All named products and descriptions are trademarks and/or registered trademarks of the respective manufacturers and are accepted as protected.

As a continuing policy of product improvement at SHARKOON, the design and specifications are subject to change without prior notice. National product specifications may vary. The legal rights of the enclosed software belong to the respective owner. Please observe the license terms of the manufacturer before using the software. All rights reserved especially (also in extracts) for translation, reprinting, reproduction by copying or other technical means. Infringements will lead to compensation. All rights reserved especially in case of assignment of patent or utility patent. Means of delivery and technical modifications reserved.

## **Disposal of Your Old Product:**

Your product is designed and manufactured with high quality materials and components, which can be recycled and reused.



When this crossed-out wheeled bin symbol is attached to a product, it means the product is covered by the European Directive 2002/96/EC. Please be informed about the local separate collection system for electrical and electronic products. Please act according to your local rules and do not dispose of your old products with your normal household waste. The correct disposal of your old product will help prevent potential negative consequences to the environment and human health.

© SHARKOON Technologies 2015

[www.sharkoon.com](http://www.sharkoon.com)