



View Quest

Bardot

Operation Guide



Sound & Style

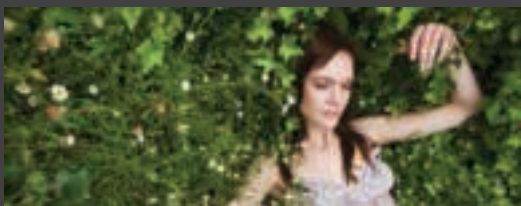
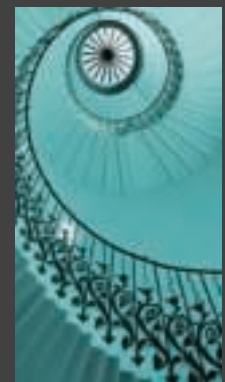
BORN IN
Britain



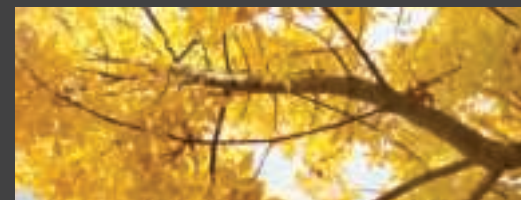
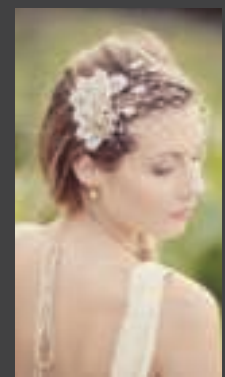
Guide d'utilisation
Betriebsanleitung

Guía de funcionamiento
Guia de Operação

Gebruiksaanwijzing
Bruksanvisning




View Quest
Sound & Style



Welcome To View Quest

View Quest is a unique British brand inspired by the fusion of Sound and Style.

At View Quest we believe that colour and design is an important part of who we are, so why should the technology we buy only be Black or Silver and lacking individuality of design?

Our award winning acoustic development programme ensures all our products feature the latest technology and unbeaten sound quality. Couple this with our passion for the creative world of: the arts, fashion & interior design and this means our products don't just sound great, they look great too.

So thank you for joining the View Quest Revolution with our award winning technology that's designed to match your style.

We encourage you to fall in love with View Quest and your new Bardot.



Jonathan Merricks
CEO & Creative Director



Daniel Copley
Product Designer

Christie

DAB/DAB+ • FM • Bluetooth



Retro Mini

DAB/DAB+ • FM • Bluetooth



Classic design, modern functionality
DAB / DAB+ / FM Radio Reception
Bluetooth & NFC Connectivity
Optional Rechargeable Battery Pack & Carry Case

Our classic style made fabulously miniature in a range of colours and designs
DAB / DAB+ / FM Radio Reception
Bluetooth Connectivity



Retro

DAB/DAB+ • FM • Apple Dock

Hepburn

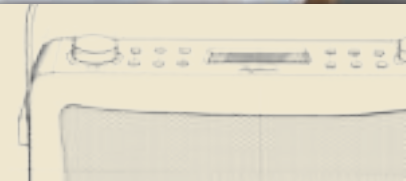
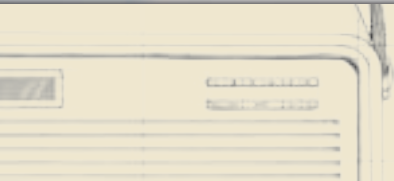
DAB/DAB+ • FM • Bluetooth



Our classic, with retro style and modern function
DAB / DAB+ / FM Radio Reception
Apple docking for 30-pin or Lightning connector devices



Vintage style with modern functionality
DAB / DAB+ / FM Radio Reception
Bluetooth Connectivity



The View Quest Colour Range

BLACK

BROWN

CREAM

RED

MUSTARD

EMERALD

TEAL

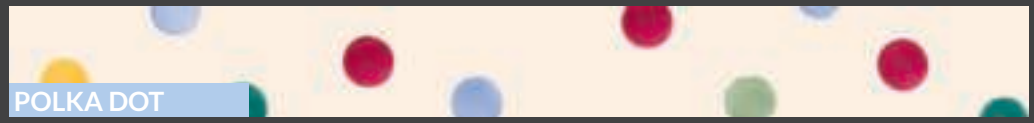
BLUE

RADIANT ORCHID

HOT PINK

PURPLE

Emma Bridgewater Pattern Range 2014/15



POLKA DOT



BLUE DAISY



SAMPLER



ROSE & BEE



PINK WALLPAPER



BLACK TOAST



MARMALADE

The Benefits of Digital Radio

When you upgrade to digital radio you get more choice than ever before – with your existing favourite stations just waiting to be experienced in digital quality but also a plethora of new digital-only stations featuring all kinds of; music, chat and programming you'll love.

Digital radio is not just about choice, it's about quality – with digital broadcasts you'll hear everything in crystal clear clarity.

If you have any concerns about the digital coverage in your area – you can check your signal on the UK Digital Radio website, it's completely free and totally impartial – www.ukdigitalradio.com



Your VQ Bardot - Born In Britain

You can be proud of your Bardot and rely on its quality as it's designed and engineered in Britain featuring British acoustic development.

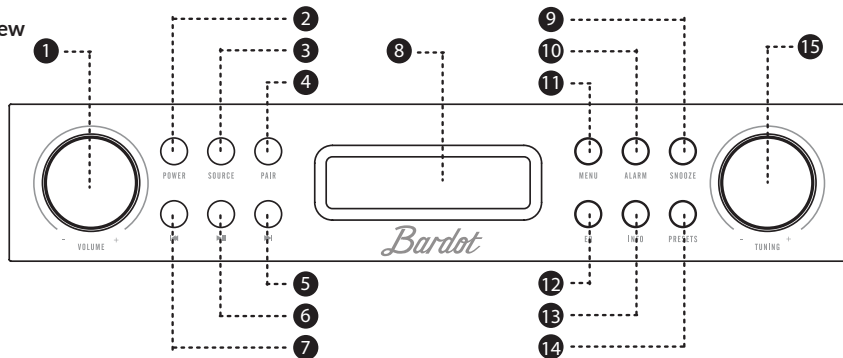
At View Quest we're proud to be British and we're proud to take our inspiration from quintessential British areas of excellence - Design, Fashion, Music and The Arts.

It's our aim to take these inspirations and create our own unique sense of Sound & Style – but also to share these influences with you to inspire your own sense of style.



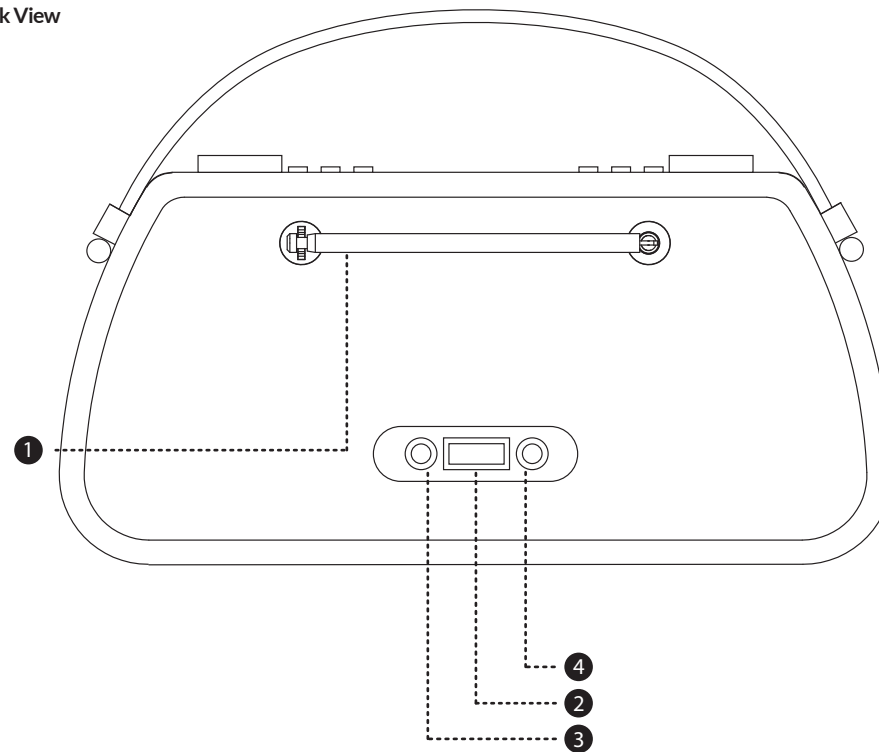
Finding Your Way Around Your Bardot

Top View



1. **- VOLUME + knob** Turn to adjust volume level.
2. **POWER button** Press to switch between standby and active modes.
3. **SOURCE button** Press to switch between DAB, FM, Smart Device and Auxiliary Input modes.
4. **PAIR button** Press to select Bluetooth device for pairing in Smart Device mode.
5. **SKIP button** Press to skip to next track in Smart Device mode. Press and hold to fast forwards current track in Smart Device mode. Continues through next tracks if held.
6. **PLAY/PAUSE button** Press to switch between pause/play of current track in Smart Device mode.
7. **BACKWARD button** In Smart Device mode, press to return to start of current track if more than 2.5 seconds in, otherwise skip to previous track. Press and hold to rewind current track in Smart Device mode. Continues through previous tracks if held.
8. **LCD display**
9. **SNOOZE button** Press to change the backlight level. When alarm is sounding, press to activate Snooze feature.
10. **ALARM button** Press to turn Alarms on or off.
11. **MENU button** Press to display menu options relevant to current mode.
12. **EQ button** Press to select or design Equaliser.
13. **INFO button** Press to view station information.
14. **PRESETS button** Press and hold to save preset stations; Press to recall a saved preset station.
15. **-TUNING+ knob** Turn to tune and press to confirm.

Back View



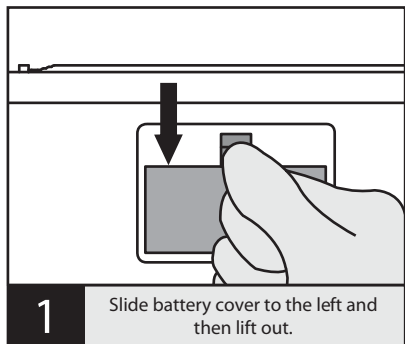
1. Aerial
2. USB port for charging devices
Outputs 5V volts for charging personal devices such as your phone or MP3 player.
3. AUX-IN for other devices
4. DC-IN power cable input

Battery Use

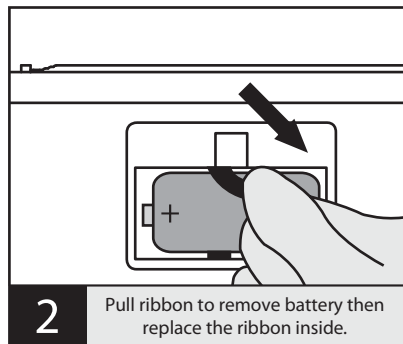
Your Bardot can be powered by 4 x Type 'D' batteries.

Be sure to insert batteries of the correct type and ensure correct polarity (+/-).

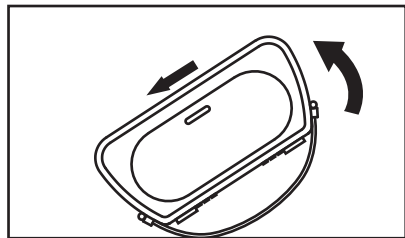
Battery Removal



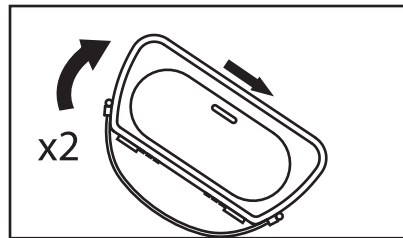
1 Slide battery cover to the left and then lift out.



2 Pull ribbon to remove battery then replace the ribbon inside.



3 Tilt product to the left, as shown, until another battery slides over the ribbon. Repeat Step 2.



4 Tilt product to the right, as shown, until another battery slides over the ribbon. Repeat Step 2. Do this twice as there are two batteries.

Introducing your Bardot Bluetooth Speaker, DAB/DAB+ and FM Radio

Bardot: compatible, stylish, hassle-free

We've designed your Bardot to make compatibility problems a thing of the past.

Compatible with your devices – old and new.

Bardot's Bluetooth lets you wirelessly connect the latest smart phones, tablets, MP3 players and other Bluetooth-enabled devices. Other audio devices without Bluetooth like turntables, computers or older phones can plug in to the 3.5mm jack.

Compatible with radio stations all over the world.

Enjoy the ever increasing selection of digital broadcasts with Bardot's DAB/DAB+ receiver as well as your old favourites with the FM tuner. Never lose track of any of your favourite stations with 30 station presets. For useful information about DAB in the UK, websites such as www.ukdigitalradio.com feature handy postcode finders that will tell you which DAB channels are available in your area.

Compatible with your Android or iPhone.

The View Quest app lets you to sit back, relax and take control of the music with your smartphone or tablet, whichever Bardot function you're using.

Ready to deliver your ideal sound.

As well as providing eight preset equaliser profiles, Bardot lets you design one of your own to exactly match your current desires.

Right for you.

Exciting colours and design complement your personal taste and style.



What can my Bardot do apart from look fab?

Here's a brief run-down of your Bardot's capabilities. Everything is explained fully later in this guide.

Bluetooth speaker

Lets you play audio from a Bluetooth source like a phone or mp3 player, and lets you control the playback from your Bardot. The tracks on your phone will never have sounded so good.

DAB/DAB+ receiver

Digital Audio Broadcasting (DAB) is the next big thing in radio. Clarity, station choice and ease of tuning are often cited as benefits. There are two versions, DAB and DAB+. Your Bardot works with either.

FM Radio

DAB isn't everywhere, so there's an FM radio in your Bardot so that you can still listen to radio wherever DAB is not available.

Auxiliary connection

Lets you plug in and listen to an external audio source that doesn't do Bluetooth, so your older devices aren't left out.

Control from your smartphone or tablet

No more missing remote controls! The View Quest App, available free for Android and iPhone devices, lets you sit back, relax and control every aspect of your Bardot.

Phone Charger

When plugged in to the mains your Bardot can charge a suitable phone or music player using its built-in USB connector. Convenient, and saves a power socket.

Dual Alarms

Wake up to your favourite radio station – or the buzzer.

Countdown Timer

A cooking timer with a range of up to 99 minutes makes your Bardot even more useful in the kitchen.



TECHNICAL SPECIFICATIONS

Getting Started

Carefully remove your Bardot from its box. You may wish to store the packaging for future use.

Inside the box you will find:

- Your Bardot
- Power Adapter with plugs for UK and mainland Europe
- User Manual

Positioning your Bardot

Place your Bardot on a flat / stable surface, with reference to the safety information section in this manual.

Adjusting the Aerial

The aerial should be extended to ensure you receive the best signal possible in both DAB and FM radio modes. Later on it may be necessary to alter the position of your Bardot and its aerial to achieve the best reception.

Turning the Unit On and Off

1. Connect the plug at the end of power adapter cable to the DC in jack on the back of your Bardot. Insert the power adapter into the mains socket.
2. Turn the mains power on and then press the POWER button to turn on the unit.

Pressing the POWER button again switches your Bardot to standby mode. To switch the unit off completely, unplug the power adapter from the mains socket.

Volume Control

Adjust the radio volume by turning the - VOLUME + knob.

Using DAB Mode

Note: When you turn on the radio it will automatically search and store all the available stations. You should conduct an additional Full Scan to ensure all stations are picked up and stored. It is also recommended every few months to run a new scan to pick up any new DAB/DAB+ stations that may have begun broadcasting after purchasing your Bardot.

1. Repeatedly press the SOURCE button until DAB is shown on the display. For the first time your Bardot will carry out a full scan and store a list of stations in memory.



2. Once the scanning is complete the DAB/DAB+ stations will be displayed in alphanumeric order. The first station in the list will be selected.

Note: if no DAB/DAB+ signal is found in your area, it may be necessary to relocate your radio to a stronger signal area. Websites such as www.ukdigitalradio.com in the UK feature handy postcode finders that will tell you what DAB channels you can expect to receive.

Selecting another DAB/DAB+ Station

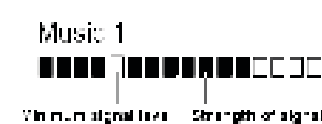
While a program is playing, turn the -TUNING + knob to cycle through available stations, and then press the -TUNING + knob to confirm the station you want to play.

Updating the Stations List

Press the MENU button, turn the -TUNING+ knob to select Full scan, and then press the -TUNING + knob to confirm. Scan will commence.

Displaying Signal Strength

While playing a DAB/DAB+ program, repeatedly press the INFO button until the display shows a signal bar indicating the strength of the current station.



Manual Tuning

1. Press the MENU button, turn the -TUNING+ knob to select Manual tune, and then press the -TUNING+ knob to confirm. The display will show the channel number and frequency.
2. Turn the -TUNING+ knob to step through the channels and then press the -TUNING+ knob to select the current channel.

Note: If there is a multiplex corresponding to this channel and frequency, then after a few seconds the display will show a tuning meter with the signal strength and the multiplex.

- To exit manual tune, press the -TUNING+ knob again.

Setting Dynamic Range Control (DRC)

You can set the compression level of stations to eliminate the differences in dynamic range or sound level between radio stations. If loud stations are too loud while quiet stations are too quiet, DRC may help.

Note: DRC off indicates no compression

DRC low indicates little compression

DRC high indicates maximum compression

- Press the MENU button, turn the -TUNING+ knob to select DRC, and press the -TUNING+ knob to confirm.
- Turn the -TUNING+ knob to select 'DRC high', 'DRC low' or 'DRC off', and then press the -TUNING+ knob to confirm your setting.

Changing Station Display Order

You may want to display your stations in a different order. Your options are:

Alphanumeric: Display all stations in alphanumeric order.

Ensemble: List currently broadcasting active stations before inactive ones.

Valid: Remove inactive stations from the station list.

- Press the MENU button, turn the -TUNING+ knob to select Station order, and then press the -TUNING+ knob to confirm.
- Turn the -TUNING+ knob to select 'Alphanumeric', 'Ensemble' or 'Valid', and then press the -TUNING+ knob to confirm your selection.

Pruning Your Station List

This feature enables your radio to remove inactive stations from the station list.

- Press the MENU button, turn the -TUNING+ knob to select Prune, and then press the -TUNING+ knob to confirm.
- Turn the -TUNING+ knob to 'Yes', and then press the -TUNING+ knob to confirm.

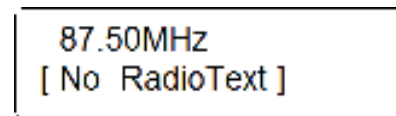
Viewing Station Information

To view currently playing station information, press the INFO button repeatedly to cycle through DLS (Dynamic Label Segment), Signal Strength, Program Type, Ensemble, Program Frequency, Signal Quality, Bitrate, Codec and Time and Date.

Using FM Mode

Selecting FM Mode

- Press the SOURCE button repeatedly until FM is displayed.
- On first use the display will show 87.50MHz, the start of the FM frequency range. Otherwise, the last listened-to FM station will be selected.



Scanning for FM Stations

- To manually scan FM stations, while frequency is displayed, turn the -TUNING+ knob clockwise/anticlockwise to increase/decrease frequency by 0.05MHz per step.
- To automatically scan, turn the -TUNING+ knob clockwise or anticlockwise and then press the -TUNING+ knob. Your Bardot will scan forwards or backwards until it reaches the next available station. To scan forwards, turn the -TUNING+ knob clockwise before pressing it. To scan backwards turn the -TUNING+ knob anticlockwise before pressing it.

Setting Scan Preferences

By default, FM scans stop at any available station. This may result in tuning to a weak station, resulting in poor sound quality. Your Bardot helps you avoid weak stations.

- To change the scan settings to stop only at stations with good signal strength, press the MENU button, turn the -TUNING+ knob to select Scan Setting, and then press the -TUNING+ knob to confirm.
- Turn the -TUNING+ knob to select 'Strong stations only', and press the -TUNING+ knob to confirm your selection.

Forcing mono for weak stations

By default, all stereo stations are reproduced in stereo. For weak stations, this may result in poor sound quality. Your Bardot can offset this effect by playing weak stations in mono.

- To play weak stations in mono, press the MENU button, turn the -TUNING+ knob to select Audio setting, and then press the -TUNING+ knob to confirm.
- Turn the -TUNING+ knob to select 'Forced mono' and press the -TUNING+ knob to confirm.

Viewing Station Information

A variety of station information is transmitted by broadcasters, and your Bardot offers a convenient way for you to view it.

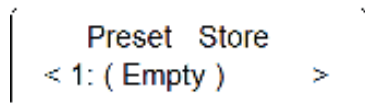
To view currently playing station information, press the INFO button repeatedly to cycle through Radio Text, Program Type, PS, Audio Info and Time and Date.

Setting Station Presets for DAB and FM

Storing Preset Stations

You can store up to both 30 DAB and FM stations as preset stations. This lets you access your favourite stations quickly and easily.

1. While your favourite station is playing, press and hold the PRESETS button until the display shows:

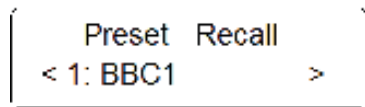


If you have stored presets, their details will be displayed instead of 'EMPTY'.

2. Turn the -TUNING+ knob to cycle through preset numbers 1-30. Find an empty preset, or one you wish to replace.
3. Press the -TUNING+ knob and your station will be stored as that preset number.

Recalling a Preset Station

- 1 Press the SOURCE button to select the mode you wish to play: FM or DAB.
2. Press the PRESETS button to show the saved preset stations.



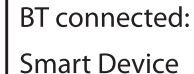
3. Turn the -TUNING+ knob to find the preset station you want to play, then press the -TUNING+ knob to confirm.

Using Smart Device Mode with Bluetooth Devices

Your Bardot lets you play and control Bluetooth devices. To let this happen the devices have to be paired.

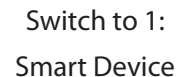
Pairing your Bardot with a Bluetooth device

1. Press the SOURCE button repeatedly to select Smart Device mode.
2. After two seconds the display will show "Waiting BT Connection".
3. Activate your Bluetooth device and select the search mode.
4. "Bardot" will appear on your Bluetooth device.
5. Select "Bardot" and enter "0000" for the password if necessary.
6. "BT Connected" and your device name will show on the display when connection is successful.



Connecting to an already paired Bluetooth device

1. Press the PAIR button. If there are any devices paired with your Bardot, the first one will show on the display.



2. Turn the -TUNING+ knob to cycle through the list of paired devices, then press the -TUNING+ knob to select the displayed device.
3. The display will show "Waiting BT Connection". Select "Bardot" on your Bluetooth device.
4. "BT Connected" and the device name will show on the display when connection is successful.

Controlling your Bluetooth device with your Bardot

Skip back, Play/Pause and Skip forward buttons can control a Bluetooth device connected to your Bardot.

Using Auxiliary Input Mode

Auxiliary Input allows for a quick and easy connection to an MP3 player or other external audio source. You need an audio cable with a 3.5mm jack (not supplied) to connect to your Bardot.

1. Before connecting to the mains socket, connect your external audio device to the AUX IN socket on the rear of your Bardot.
2. Connect the power adapter to the mains socket, press the POWER button to switch your Bardot on.
3. Press the SOURCE button repeatedly until Auxiliary Input appears on the display.

Auxiliary Input

In this mode, you control your audio device through its own controls. Volume levels on both the audio device and your Bardot may need to be adjusted for optimal volume and clarity.

Remotely Controlling your Bardot with an Android or iOS device

You can turn your smartphone or tablet into a remote control for your Bardot with the free View Quest App.

What you can do with the View Quest App

- Sources: switch between Bluetooth, Dab/DAB+, FM and Auxiliary
- DAB/DAB+, FM: adjust volume, channels and presets, display RadioVIS information
- Bluetooth: change tracks and adjust volume
- AUX-IN: adjust the volume

You can also manage equaliser presets and tell your Bardot to standby or wake up, and all of this without leaving your chair.


What tablet or smartphone do you need for a remote?

For Apple devices, the App is compatible with all iPhones, iPads and iPod Touch devices running iOS 3.1.3 or later (also iPad and iPad 2 devices in iPhone compatibility mode). For Android devices, Android 2.2 or later is supported.


Your device needs Bluetooth and you need to be able to install apps from the appropriate app store.

Note: We'll refer to your Apple or Android device as your "Remote" from now on.

Installing the View Quest App



1. Go to the appropriate store for your device; App Store for Apple, Play Store for Android. The simplest way to find the View Quest App is to use the search bar at the top of the screen to find "viewquest" (with no quote marks). The App is called "View Quest", it's free to install and use and its icon looks like this: 
2. Install the App by pressing the INSTALL button.


Setting up the connection with your Bardot

1. After you have installed the View Quest App, the next step is to establish a Bluetooth connection between your remote and your Bardot. Please follow the section "Pairing your Bardot with a Bluetooth device" on page 25.
2. Having paired successfully, Tap the icon  on your remote to start the app.
3. The App splash screen will display briefly, then the Radio List screen, which will display your Bardot as an Unknown Bluetooth device. Click on the Bardot entry, and the app will connect with your Bardot.

You are now in **control** of your Bardot.

[Optional] Quickly setting up the app display for your remote

The View Quest App automatically optimises its display for the type of device it is running on; it uses a different layout on a phone (portrait)  to a tablet (landscape) . So if you are, for example, using a tablet in portrait mode, your display may not be optimal. To change this:

1. Tap your device's menu key (see your device user manual for assistance finding this).
2. Tap the Settings button  for settings.
3. Tap the button next to UI type and select Smartphone or Tablet.
4. The display will adapt to the new setting.
[Note] The View Quest App does not rotate in normal use.
[Note] Selecting Tablet UI type on a small device may truncate some information.

Controlling your Bardot with your phone or tablet remote

Finding your way around the View Quest App

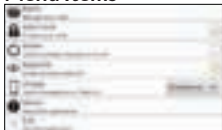
Main Panels

Your View Quest App has 4 major information panels. They are: Browse, Preset, Mode, Now Playing
 In smartphone mode these panels are accessed one at a time using control buttons at the bottom of the display. In tablet mode they appear onscreen at the same time in separate windows. This makes the best of available space, whatever the size of your device.



The roles of these panels when listening to different sources will be explained in 'Getting Started'.

Menu Items



In both smartphone and tablet mode tapping your device menu while the View Quest App is running reveals icons for common functions. They are:

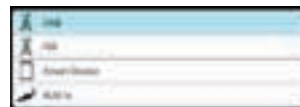
- EQ Settings – lets you select pre-defined equalisation settings or configure one of your own.
- Settings – opens a panel where you can change common settings:
 - Radio – Scans for and lists available radios. Choose your Bardot from this list.
 - Auto-lock – Disable or enable auto-lock of your phone or tablet.
 - Power – Power off (standby) or power on your Bardot.
 - RadioVIS – Disable or enable the display of images and text messages sent by some radio stations to accompany their programmes. RadioVIS is transmitted over the internet, so requires a WiFi or 3g connection.
 - UI type – selects smartphone or tablet user interface.
 - About – displays App version information.
 - Exit – quits the View Quest App.

- Standby – puts your Bardot in standby mode, and opens the Settings panel ready for you to enable power to your Bardot again
- Exit – quits the View Quest App

Getting Started – your Main Menu: Mode

In smartphone mode tapping Mode brings up the Mode List fullscreen.

In tablet mode the Mode List is always visible in the Mode panel.



Enjoying DAB/DAB+ with the View Quest App

Smartphone mode: to select DAB/DAB+ tap Mode then tap DAB.

Tablet mode: to select DAB/DAB+ just tap DAB in the Mode Window.

In smartphone mode the View Quest App will display the Now Playing panel. You can select it again by tapping the Now Playing button at the bottom of the display.

In tablet mode all the panels are visible, the Now Playing panel is on the right.

The Now Playing panel in DAB/DAB+ mode

The Now Playing panel displays the last used radio station. If no station has ever been selected the DAB/DAB+ browse screen is shown.

[Note] If RadioVIS is enabled and available for the current station, images available over the internet are presented, synchronised with the DAB broadcast.

Now Playing options for DAB:



Mute or unmute


Volume Slider Set output volume



Jump to next or previous station in alphabetical order

The Browse panel in DAB/DAB+ mode

In  mode tap the Browse button  at the bottom of the display.


In  mode all the panels are visible, the Browse panel is at the bottom left.

The Browse panel displays the DAB broadcast radio stations discovered by your Bardot. Scroll and tap on a station to select it. (For details of scanning for DAB radio stations, see “DAB Mode” on page 11 of this manual.)


[Note] When browsing through stations, any station no longer detected is listed with a question mark in front of its name.

The Preset panel in DAB/DAB+ mode

In  mode tap the Preset button [icon] at the bottom of the display.

In  mode all the panels are visible, the Preset panel is at the top middle.



To select one of your preset stations, scroll the list if necessary and tap the station.


To add the currently playing station to your presets tap Add Preset  at the top left of the Preset panel. This will display a green Select button  next to every preset. Tap the green Select button next to the preset you wish to hold the current station.

Enjoying FM radio with the View Quest App

 mode: to select FM tap Mode  then tap FM.

 mode: to select FM just tap FM in the Mode panel.

In  mode the View Quest App will display the Now Playing panel. You can select it again by tapping the Now Playing button  at the bottom of the display.

In  mode all the panels are visible, the **Now Playing** panel is on the right.

The Now Playing panel in FM mode

The radio tunes to the last frequency selected and plays any audio present. If no frequency has previously been selected the lowest FM frequency is presented.

[note] If RadioVIS is enabled and available for the current station, images available over the internet are presented, synchronised with the FM broadcast.

Now Playing options for FM:



Mute or unmute

Volume Slider

Set output volume



Manually tune down/up in 0.05MHz intervals



Scan down/up to next station

The Browse panel in FM mode

In  mode tap the Browse button  at the bottom of the display.

In  mode all the panels are visible, the Browse panel is at the bottom left.



The Browse panel for FM displays an analogue tuning knob – rotate it with your finger to tune the FM radio.

The Preset panel in FM mode

In  mode tap the Preset button  at the bottom of the display.

In  mode all the panels are visible, the Preset panel is at the top middle.

To select one of your preset frequencies, scroll the list if necessary and tap the frequency you wish to tune to.


To add the currently playing station to your presets tap Add Preset  at the top left of the Preset panel. This will display a green Select button  next to every preset. Tap the green Select button next to the preset you wish to hold the current frequency.


Enjoying your Bluetooth device with the View Quest App

[note] The View Quest App in Smart Device mode works in conjunction with the audio player on the tablet or smartphone you are using as a remote. The App cannot control another Bluetooth device.

 mode: to select Smart Device tap Mode  then tap Smart Device.

 mode: to select Smart Device just tap Smart Device in the Mode panel.

In  mode the ViewQuest App will display the Now Playing panel. You can select it again by tapping the Now Playing button  at the bottom of the display.

In  mode all the panels are visible, the Now Playing panel is on the right.

The Now Playing panel in Smart Device mode

The Now Playing panel does not display any audio information in Smart Device mode. Use the audio player in your remote to select albums or playlists.

Now Playing options for Smart Device:

 Mute or unmute

Volume Slider Set output volume

 Toggles between play and pause for the current track

 Go to start of current – play previous/play next track


The Browse and Preset panels in Smart Device mode


The Browse and Preset panels have no function in Smart Device Mode; use the device's audio player to navigate albums and playlists instead.

Enjoying an auxiliary device with the View Quest App

 mode: to select AUX In tap Mode  then tap AUX-In.

 mode: to select AUX In just tap AUX-In in the Mode panel.

In  mode the View Quest App will display the Now Playing panel. You can select it again by tapping the Now Playing button  at the bottom of the display.

In  mode all the panels are visible, the Now Playing panel is on the right.

The Now Playing panel in AUX in mode

The Now Playing panel displays a Jack plug symbol and volume control.

Now Playing options for AUX in:

 Mute or unmute

Volume Slider Set output volume

[note] The volume control on the input device, if present, may need to be adjusted in conjunction with the app volume control for optimal volume and clarity. You control playback from the input device too.

Other Panels in AUX In mode

Apart from Mode to change source, no other panels have any function in AUX In mode.

General Settings

Equaliser

Your Bardot has seven equalisation settings to suit different sound types, and you can also configure one of your own to exactly match your requirements. Each of the equalisation settings will change the tone of your Bardot when selected. To choose an equalisation setting:

1. Press the EQ button to select 'Equaliser'.
2. Turn the - TUNING + knob and then press it to select Normal, Classic, Jazz, Pop, Rock, Speech, Bass or My EQ.
3. To set up your own Equaliser profile, select 'My EQ', and then set the level of Treble, Bass and Loudness using the - TUNING + knob.

Count Down Timer (Cooking Timer)

The timer can be set at one minute intervals up to 99 minutes in the future.

1. Press the MENU button, and then turn the - TUNING + knob to select System menu. Press the - TUNING + knob to confirm.
2. Turn the - TUNING + knob to select Count Down Timer menu, and then press the - TUNING + knob to confirm.
3. Turn the - TUNING + knob until the desired time appears in the display, then press the - TUNING + knob to confirm.
4. To view the remaining time, follow steps 1-2 to select Count Down Timer menu again.
5. When the time is elapsed, the buzzer will sound, at an increasing volume. Any other sound playing on your Bardot will be muted while the buzzer is sounding.
6. Press the - TUNING + knob to stop the buzzer. Otherwise the buzzer will turn off automatically after 30 minutes.
7. To cancel an already set Count Down timer, follow steps 1-3 to set the time to 00:00 minutes.

Time and Date

Your Bardot can set its time and date from DAB, or you can set it manually. You can also select your date and time formats.

1. Press MENU, turn the - TUNING + knob to display Time then press the - TUNING + knob to select.

Further turning of the - TUNING + knob will cycle through the options below:

Set Time/date:	Manually set-up both Time and Date
Auto update:	'Update from DAB' or 'No update'
Set 12/24 hour format:	'Set 24 hour' or 'Set 12 hour'
Set date format:	'DD-MM-YYYY' or 'MM-DD-YYYY'

2. Use the - TUNING + knob to find and select the options you prefer.

To set time manually:

1. Select "Set Time/Date"
2. Turn the - TUNING + knob to select correct hours, press the - TUNING + knob to confirm.**
3. Turn the - TUNING + knob to select correct minutes, press the - TUNING + knob to confirm.
4. Turn the - TUNING + knob to select correct day, press the - TUNING + knob to confirm.*
5. Turn the - TUNING + knob to select correct month, press the - TUNING + knob to confirm.*
6. Turn the - TUNING + knob to select correct year, press the - TUNING + knob to confirm.

**The value of this item is affected by your hour format setting

*The order of these items are affected by your date format setting.

Alarms

Your Bardot provides highly flexible dual alarms. Before setting your alarms, please set the time and date as detailed in the previous section. Then:

1. Press the ALARM button repeatedly to select 'Alarm 1 Setup' or 'Alarm 2 Setup' and press the - TUNING + knob to confirm. This will start the Alarm Wizard.
2. The Alarm Wizard will step you through the alarm options. Turn the - TUNING + knob to select options, and then press the - TUNING + knob to confirm the settings and move to the next option. (To cancel alarm setup, press ALARM button again.)

Options are as follows:

Alarm states:	On or Off
Alarm time:	00:00 (manually set up the time)
Alarm duration time:	15/30/45/60/90 mins
Alarm source:	DAB, FM or buzzer (If you select DAB or FM, you can choose your last listened to station, or Preset 1, if set)
Alarm active day:	Daily, Once, Weekends or Weekdays
Alarm volume:	Turn the - TUNING + knob to adjust the alarm volume

3. When the display shows 'Alarm Saved', the alarm setting is set.
4. To temporarily switch off alarm, press the SNOOZE button when the alarm is sounding. Press the SNOOZE button repeatedly to set Snooze period time of 5, 10, 15 or 30 minutes in turn. The selected snooze time will show as "Snooze mm : ss" on the display.
Note: Different Snooze periods are available depending on alarm duration.
5. To turn off the Alarm, press the POWER or ALARM buttons when the alarm is sounding.

6. To cancel Alarm, refer to steps 1-3 to set Alarm states to 'Off'.

Backlight Level

To change the backlight level of standby mode and power on mode, press SNOOZE repeatedly while alarm is not sounding. Or using the menu:

1. Press the MENU button and then turn the - TUNING + knob to select System menu. Press the - TUNING + knob to confirm.
2. Turn the - TUNING + knob to select Backlight menu and press the - TUNING + knob to confirm.
3. Turn the - TUNING + knob to select backlight level, and press the - TUNING + knob to confirm the setting.

Power On -	High	Standby -	High
	Medium		Medium
	Low		Low

Language

1. Press the MENU button, and then turn the - TUNING + knob to select System menu. Press the - TUNING + knob to confirm.
2. Turn the - TUNING + knob to select Language menu and press the - TUNING + knob to confirm.
3. Turn the - TUNING + knob to select language and press the - TUNING + knob to confirm.

Factory Reset

Factory reset resets all user settings to default values, so time/date, alarm settings, presets and Bluetooth settings are lost.

1. Press the MENU button, turn the - TUNING + knob if necessary to select System menu and press the - TUNING + knob to confirm. Then turn the - TUNING + knob to select Factory Reset. Press the - TUNING + knob to confirm.
2. Turn the - TUNING + knob to 'Yes', and then press the - TUNING + knob to confirm. Display will show "Restarting" and your Bardot will reset to Factory settings.

Software Version

Note: The helpdesk may ask you for the software version of your product.

1. Press the MENU button, and then turn the - TUNING + knob to select SW Version. Press the - TUNING + knob to confirm. Display will show "SW Version" and below it your Bardot's software version, scrolling as necessary.

Important Safety Information – please read

Please read this guide before using your unit – it contains guidance and recommendations that can help ensure long-lasting, trouble-free, safe operation. Please keep this guide for future reference.

Be careful. Avoid:

- **Liquids:** don't expose your unit to drips or splashes, and don't put liquid containers like vases on it or near it.
- **Humidity or moisture:** humid or moist places like bathrooms and steam rooms need specially-designed equipment.
- **Heat:** don't expose your unit to direct sunlight or heat from radiators or other heat sources. Audio/video devices can generate a lot of heat; don't put your unit on top of such devices. Don't use naked flames anywhere near your unit either.
- **Dust and restricted airflow:** make sure your unit is in free-flowing air to avoid overheating.
- **Vibration:** constant vibration can cause damage.
- **Extreme climates:** this unit is designed for operation in moderate climates.

IMPORTANT:

- **DO NOT** listen at high volume: High volumes can permanently damage hearing.
- **DO NOT** use equipment, especially headphones, when it could distract you from the requirements of traffic or other safety.
- **DO NOT** Use equipment that is not working normally or you suspect may be faulty or damaged.
- **DO NOT** leave equipment switched on when it is unattended unless it is specifically stated that it is designed for unattended operation. Switch off using the switch on the equipment and make sure that your family knows how to do this. Special arrangements may need to be made for infirm or handicapped people.

Always:

- Operate all controls as instructed in the manual.
- Ensure that all electrical connections (including the mains plug, extension leads and inter-connections between the pieces of equipment) are properly made and in accordance with the manufacturer's instructions. Switch off and withdraw the mains plug before making or changing connections.



CAUTION: TO REDUCE THE RISK OF ELECTRIC SHOCK DO NOT REMOVE COVER (OR BACK), NO USER SERVICEABLE PARTS INSIDE, REFER SERVICING TO QUALIFIED SERVICE PERSONNEL.



DANGEROUS VOLTAGE Dangerous Voltages, that may be of sufficient magnitude to constitute a risk of electric shock to persons is present within this product's enclosure.



ATTENTION The owner's manual contains important operating and maintenance instructions, for your safety, it is necessary to refer to the manual.

WARNING: TO PREVENT FIRE OR SHOCK HAZARD, DO NOT EXPOSE THIS APPLIANCE TO DRIPPING OR SPLASHING.

Note: This unit will become warm when used for a long period of time. This is normal and does not indicate a problem with the unit.

Battery safety guidelines

- Be sure to insert batteries of the correct type and ensure correct polarity (+/-).
- To insert batteries, remove the battery compartment cover and insert batteries observing polarity.
- Ensure the cover is secure and remove batteries in a safe manner without the use of metallic or other conductive objects
- Batteries should not be replaced by children
- Never dispose of batteries in fire as they may explode
- Batteries should not be exposed to excessive heat such as sunshine, fire or naked flame.
- Only use batteries of the same type
- Do not mix old and new batteries and do not mix alkaline and rechargeable batteries
- Do not attempt to charge non-rechargeable batteries
- If the radio is not going to be used for a long period of time, remove the batteries from the battery compartment
- Always remove spent batteries from the battery compartment and dispose of them responsibly to protect the environment

Note: For battery operation, please switch off the mains adaptor and remove the mains power plug from the back of the

Specification

Description:	Bluetooth Speaker with DAB/DAB+ and FM digital radio
Frequency Ranges:	FM: 87.5-108MHz
DAB/DAB+:	174.928 – 239.200MHz
Power Supply:	AC Power Input: 100-240VAC, 50-60Hz
Audio Output:	80Hz- 20KHz frequency range
Power Consumption:	10W rms
Dimensions:	285mm x 75mm x 155mm



This symbol on the product or in the instructions means that your electrical and electronic equipment should be disposed at the end of its life separately from your household waste. There are separate collection systems for recycling in the EU.

For more information, please contact the local authority or your retailer where you purchased the product.

View Quest hereby declares that the Bardot radio is in compliance with the essential requirements and other relevant provisions of Directive 1999/5/EC.

For further details, please contact :

View Quest
9-10 Mill Lane
Alton
Hampshire
GU 34 2QG
support@viewquest.co.uk
www.viewquest.co.uk



Support

We're sure you're going to have a long and happy relationship with your new Bardot. How can we be so sure, well, we've designed, engineered and loved this product from the pages of a concept book through to the gorgeous product you have in your hands. We're very proud of our products and the care and attention we give them, this is reflected in our fantastically low returns rate.

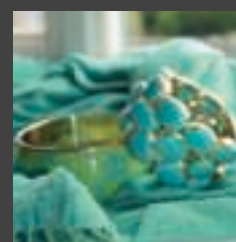
However, if you do have a problem then we're always happy to help:



+44 (0)1792 704 452



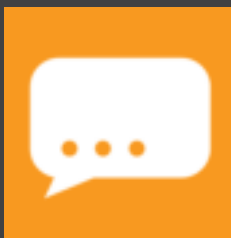
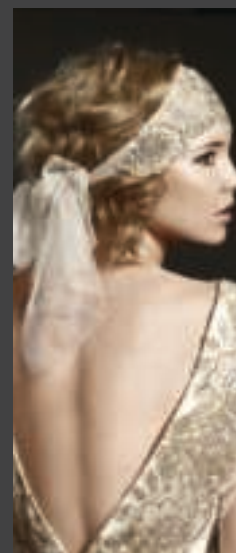
Support@viewquest.co.uk



If You Love Your Bardot Let The World Know

We take great pride in all our products and we hope you love your Bardot, if you do we'd love to hear about it. So why not share your experience and your own sense of sound & style with us via social media or reviews with our retailers.

#SoundStyle



SHOW US YOUR

Sound & Style

#SoundStyle

 /ViewQuest

 @View_Quest

 @ViewQuest

 /ViewQuest



www.viewquest.co.uk



+44 (0)1792 704 452



Support@viewquest.co.uk