

WWW.INFIRE.PL



MANUAL FOR USE OF THE INFIRE BIO-FIREPLACE

APPLICABLE TO:

- BIO-FIREPLACE WITH SIMPLEBURNERS**
- BIO-FIREPLACE WITH WAVESHAPED BURNERS**
- BIO-FIREPLACE WITH LONG BURNERS**

**INFIRE KAROL LIPKA
UL. OBWODOWA 3
11-500 GAJEWO**

Kontakt:

biuro@infire.pl

infire@wp.pl



MANUAL FOR USE OF THE INFIRE BIO-FIREPLACE

Thank you for purchasing our fireplace! We are sure that it will bring you a lot of joy and warmth. Read the installation and operating manual carefully before use.

MAKE SURE after approx. 3-5 seconds that the fire has been extinguished (raise the extinguishing cover with the handles). If the first time the fire does not extinguish, repeat the process.

IF IN THE FIREPLACE ALL THE FUEL HAS BEEN BURNT, COVER IT WITH THE FIREPLACE COVER, BECAUSE AFTER BURNING THE FUEL A DELICATE SMELL MAY APPEAR. When the fireplace is extinguished and there is liquid in the tank, the cover of the fireplace must be closed to prevent the liquid from evaporating. **If you have several fireplaces next to each other you should extinguish all at the same time. If you want to use one fireplace, there should be no fuel in the neighbouring fireplace as it can be ignited from the neighbouring temperature.**

- Do not attempt to extinguish the flame with water or any other substance!

- Do not attempt to extinguish the flame by blowing it!

IN CASE OF FIRE! Suitable extinguishing means:

-CO₂ Fire Extinguishers

- Dust extinguishers, liquid extinguishers with an additional aqueous solution

- Powder extinguishers with ABC or BC extinguishing powder

It is recommended to have at least one of the above extinguishing agents in the vicinity of the activated device.

DO NOT ATTEMPT TO EXTINGUISH THE FLAME WITH A DENSE STREAM OF WATER, AS THIS MAY CAUSE THE FLAME TO SPREAD!

III.C. THE 450 SIMPLE FIREPLACE.

- The attached steel handles should be grasped accordingly: in the right hand with the letter R and in the left hand with the letter L. Put the handles on the pins sticking out from the silver slider (right on the right and left on the left) After putting the handles on the pins, slide the handles outward so that the pin enters the narrower part of the cut-out in the handle and locks it in place.



Then, by continuously sliding the two handles outwards, move the cover over the burner and cover the opening from which the flame is coming. This should be done evenly and simultaneously for the entire width.



I. GENERAL PRINCIPLES FOR SAFE USE

Use fuel with a maximum alcohol content 96,6%. The use of any other fuel will mean that the fireplace is not being used properly and the warranty will be void.

Make sure that there is good ventilation in the room where you install the fireplace. The room in which the device will be used should have a minimum area of 20m². For example, it is helpful to open the window for 20 minutes. When using the fireplace in a room, the window must be tilted. Operation is only permitted in rooms that comply with the guidelines. The use of several devices at the same time is only permitted if the output power is equal to or lower than 4.5kw/h. Additional room ventilation is required.



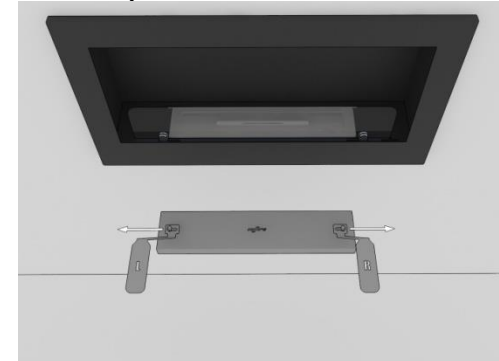
WARNING! DO NOT ADD FUEL TO A BURNING OR AN UNHEATED FIREPLACE! Wait at least 25 minutes after the fireplace has extinguished before refilling the fireplace. If you extinguish the fireplace before burning out the entire fuel, wait until the fireplace has cooled down before you restart it.

- Not suitable for continuous operation.
- Do not place any objects on or in the fireplace as these will heat up significantly and may damage the fireplace housing.
- Do not touch the fireplace during its operation and do not touch it for 30 minutes after it has extinguished in order to avoid burns.
- A maximum of 5 litres of fuel can be stored in one room. Protect the biofuel from children and heat (including sunlight and central heating).
- Do not store flammable materials closer than 3 m from the fireplace.
- Do not smoke near the heating fluid.
- Never leave the fire unattended.
- Do not leave young children or animals unattended near the fire.
- The use of bio-fireplaces in the bedroom is not recommended.
- Never use the fireplace without its housing. A fireplace can only be started if the hearth is inside the fireplace.
- Do not use the fireplace where the fire will be exposed to draught.
- Do not move the device while it is operating.
- Infire bio-fireplaces have a decorative function, not a heating function. Do not use the Infire fireplaces for heating purposes.
- The design of the device should not be altered or modified
- Use the spare parts only under the supervision of the manufacturer.
- Regularly check the storage tank for excess fuel. If such fuel is detected, the tank shall be emptied (e.g. before each refilling of the fuel tank).

Comply with local laws and regulations.

Extinguishing: after firing up the fireplace, it is recommended to burn the entire quantity of the biofuel used. If it is necessary to extinguish the fireplace, cover the fire hole before burning all the fuel. To cover the fireplace, use the special tool supplied with the fireplace - a rectangular black cover with the INFIRE logo.

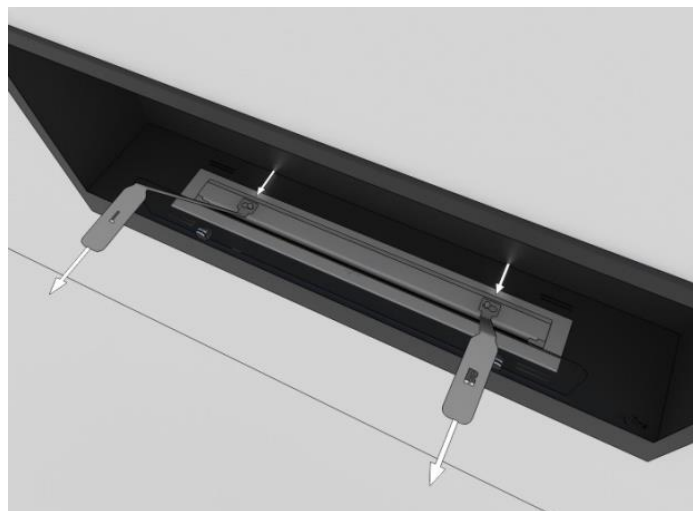
- The attached steel handles should be grasped accordingly: in the right hand with the letter R and in the left hand with the letter L. Put the handles on the pins sticking out from the silver slider (right on the right and left on the left) After putting the handles on the pins, slide the handles outward so that the pin enters the narrower part of the cut-out in the handle and locks it in place.



Then, by continuously sliding the two handles outwards, move the cover over the burner and cover the opening from which the flame is coming. This should be done evenly and simultaneously for the entire width.



IIIB ADJUSTING AND EXTINGUISHING THE 800 INOX FIREPLACE ADJUSTING - grasp the attached steel handles respectively: in the right hand with the letter R and in the left hand with the letter L. Put the handles on the pins sticking out from the silver slider (right on the right and left on the left) After putting the handles on the pins, slide the handles outward so that the pin enters the narrower part of the cut-out in the handle and locks it in place. Slide the flap to adjust the flame size by reducing or increasing the opening from which the flame comes.



II. STARTING AND EXTINGUISHING

To start the fireplace you need to:

1. Fill the metal tank (the hearth(s)) with Infire[®] biofuel. The burner is filled with a fiber, do not pull it out - the fiber absorbs the fuel that is poured directly on it.

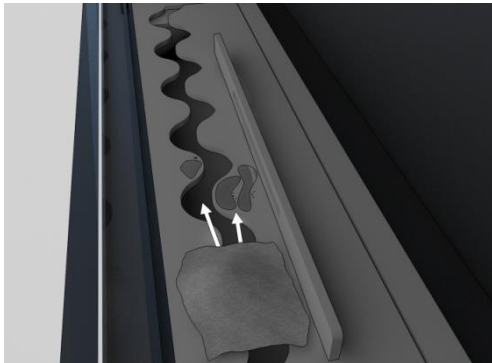
Do not fill the tank up completely!

The amount of biofuel that can be added varies according to the model:

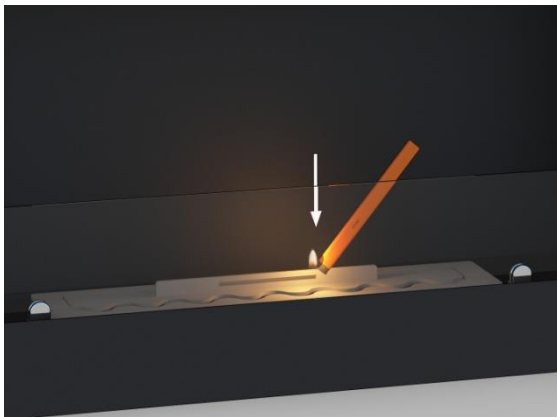
- 0.7 litres for the 450 SIMPLE fireplace - burning time approx. 2h
- 0.7 litres for the 500 WAVE fireplace - burning time approx. 2h
- 2 litres for the 800 INOX fireplace - burning time approx. 2h



1. Wipe dry any fuel spilled around the fireplace (outside the tank).



2. Using a lighter, bring the fire closer to the fuel surface in the hearth.



The lighter may be empty for safety reasons - it must be filled with gas for cigarette lighters). If there is less than half a litre of liquid in the fireplace, it can be difficult to start the fireplace.

If the fuel goes out immediately after firing up, it is necessary to immediately after firing up the fuel, blow the flame several times so that it catches the so-called draft and ignites. If the fuel is stored in a cold place (below 5°C), it will not burn - in which case the fuel must remain at room temperature for some time until the appropriate temperature is reached.

DO NOT THROW MATCHES OR OTHER OBJECTS INTO THE HEARTH!

In the initial phase, the flame will be relatively small. Wait about 20 minutes until the flame reaches the appropriate size.

III.A. ADJUSTING AND EXTINGUISHING THE 500 WAVESHAPED FIREPLACE

ADJUSTING - for adjustment we use the supplied handle in the shape of the letter T, with which, after inserting into the vertical slotted hole in the plate, we can slide the upper flap and thus regulate the flame size.

By sliding the flap to the end we turn off the flame.

