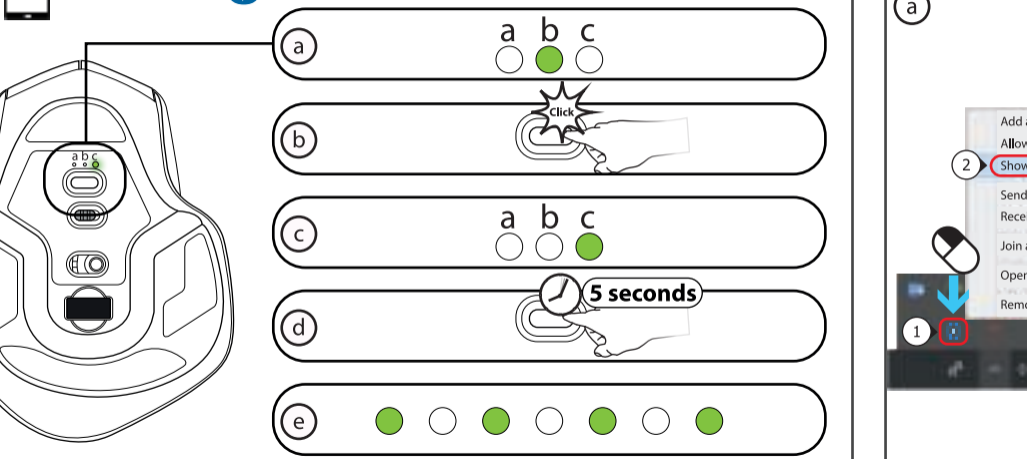


7



Bluetooth Pairing mode



8. Windows 10/8

(a) **(1)** Bluetooth **(2)** Bluetooth On

(b) **(2)** Show Bluetooth Devices

(c) **(1)** Trust EVO-RX Ready to pair **(2)** Pair

9. Windows 7/Vista

(a) **(1)** Add a Device **(2)** Allow a Device to Connect **(3)** Add a Device

(b) **(1)** Trust EVO-RX Bluetooth Mouse **(2)** Trust

10. Mac

(a) Bluetooth: Off Turn Bluetooth On Open Bluetooth Preferences...

(b) Bluetooth: On Turn Bluetooth Off Devices Bluetooth Keyboard Send a file to Device... Browse files on Device... Open Bluetooth Preferences...

(c) Bluetooth Keyboard Not Connected Trust EVO-RX

11. Android

(a) Settings **(b)** Bluetooth **(c)** Trust EVO-RX

FAQ www.trust.com/22975/faq

Trust EVO-RX ADVANCED LASER MOUSE



- User Guide
- Bedienungsanleitung
- Mode d'emploi
- Gebruikershandleiding
- Manuale utente
- Manual del usuario
- Guia do utilizador
- Brukerveiledning
- Bruksanvisning
- Käyttöopas
- Brugsvejledning
- Instrukcja obsługi
- Návod k použití
- Návod na používanie
- Használati útmutató
- Manual de utilizare
- Ръководство за потребителя
- Εγχειρίδιο χρήσης
- Kullanıcı kılavuzu
- Руководство пользователя
- Uporabniški priručnik
- Korisnički priručnik
- Guia do usuário
- Посібник користувача

