



OPERATING INSTRUCTION



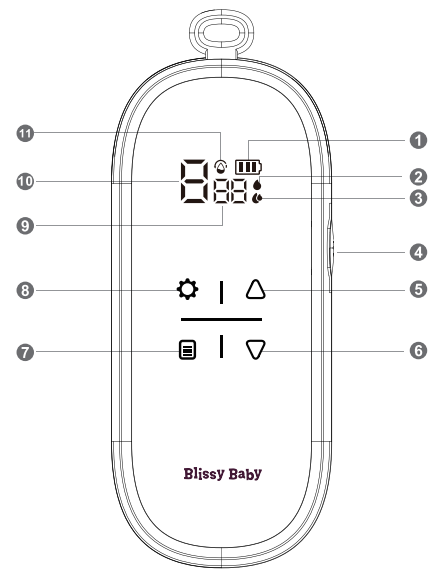
Wearable Hands Free Electric Breast Pump DPS-8009A

ELECTRIC BREAST PUMP

Button and function

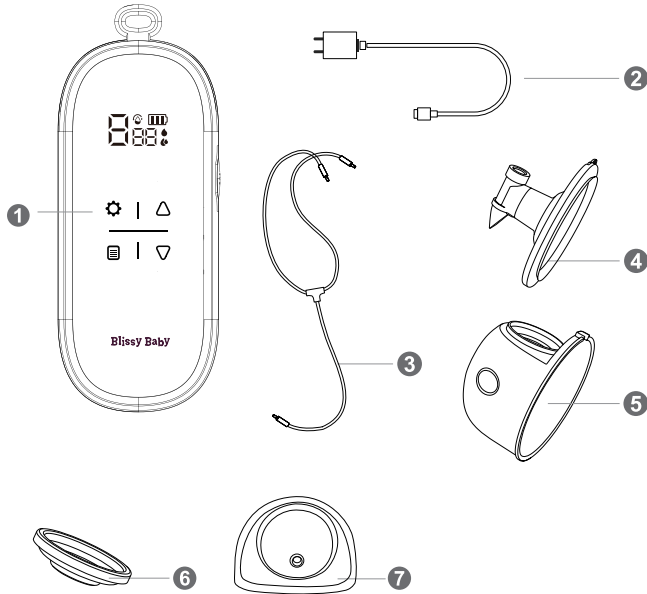
catalog

- Button and Function 01
- Components and Names 02
- Cleaning and sterilizing 03
- Assembling your breast pump 04
- Operating Mode 05
- How to Use the Breast Pump 06
- Attentions 07
- Storage and Heating for Breast Pump 08



- ① Battery Mark
- ⑤ Suction Enhance Key
- ⑨ Working Time
- ② Message Mode
- ⑥ Suction Weaken Key
- ⑩ Working Level
- ③ Suction Mode
- ⑦ Memory Key
- ⑪ Milk Collection Mode
- ④ ON-OFF key
- ⑧ Mode Key

Components and their name



- ❶ Pump motor x1
- ❷ Adapter x1
- ❸ Double tube x1
- ❹ Silicone breast shields x2

- ❺ 240ml milk collection cups x2
- ❻ Silicone diaphragm x2
- ❼ Diaphragm cover x2

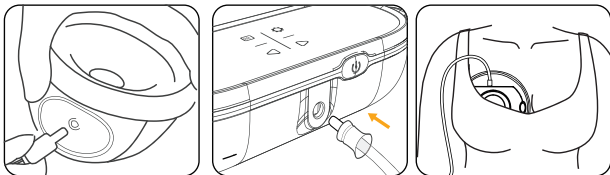
Cleaning and sterilizing your breast pump

This is necessary to protect you and your baby and to ensure the best performance of your breast pump.

- Before first use, you must disassemble, wash and sterilize all parts of the breast pump that come into contact with breastmilk .
- Never wash or sterilize the pump motor or tubes. These components do not come into contact with breast milk. You can wipe them clean with a soft cloth.
- Take care to only clean the other parts of the breast pump with your fingers. Do not insert any objects into the breast shield, diaphragm or diaphragm cover as this may cause damage.
- Drinking water is recommended for cleaning your breast pump parts.
- To prevent damage to the breast pump, ensure all parts of the breast pump are completely dry before assembling, paying particular attention to the diaphragm and diaphragm cover as any moisture in these parts immediately impact on the suction.
- Wash and dry your hands thoroughly before assembling pump parts.
- Clean the surfaces of the pump parts after each use.
- Once every day, wash and sterilize all parts that come into contact with breastmilk to kill any living organisms such as bacteria which may be present on the surfaces of pump parts and which may contaminate breastmilk.
- If sterilizing in a microwave, ensure there is sufficient water in the bag or container being used.
- When sterilizing by boiling, do not boil for more than 10 minutes and ensure there is sufficient water in the pan so that the pump parts do not come into direct contact with the hot pan.

Assembling your breast pump

- Before first use, charge the breast pump battery for 2 hours by connecting the pump to an external power source using the adapter.
- Place the silicone diaphragm on the collection cup. Ensure it forms a complete seal.
- Place the plastic diaphragm cover on the silicone diaphragm and push down to seal.
- Insert the breast shield into the collection cup, ensuring it is pushed firmly into the inner connector and check the opening at the top of the cup is aligned. Press to secure the breast shield all around the collection cup.
- Sit upright lean slightly forward and place each nipple into the centre of the breast shield. Ensure your bra is adjusted to fit snugly around the collection cup. Be careful not to leave any gap between the breast and the breast shield to ensure good suction.
- Push one end of the tube into the pump motor and the other end(s) into the diaphragm cover(s) on the top of the collection cup(s).



Operating mode

Operating Mode of Power supply (Alternating Current)

This breast pump can be operated when plug into power. Link the 5V DC plug of the adapter to the body (AC 100-240V and 50HZ of input, DC5V and 1A of output) and the other side of the connector to the power jack. When the breast pump is power on, there' S power mark on theboot-up screen. Please pull the plug when the breast pump is not in use.

Operating Mode of Battery (Direct Current)

This breast pump can be operated with built-in lithium battery. When the battery is full charged, the battery mark is display on the LED screen. When the battery mark starts to flash, please plug the adapter to charge the battery. When operate in the battery mode, please pull the plug of the AC adapter from the breast pump body. Warning: Improper use of the battery in this device may cause fire or chemical reaction. Avoid disassembly and heating over 60 degree.

Memory Function

One press on this button to remember present working mode and suction level, the suitable and comfortable suction. So when you turn on machine next time, it will first show the memory level for 3 seconds, and then turn to levell of massage mode in order to remind you the preferred setting.

How to use the Breast Pump?

- Turn on the pump by pressing the power button and select the pumping mode and level you prefer.

ON-OFF key

Long Press this button to turn on the machine and second press the button will turn off the machine.

Default Working Time: this machine will turn off automatically after working for 30 minutes.

Weaken-Enhance key

These two buttons are for Levels adjustable. From Level 1 to Level 4 of Lactation mode (massage mode), each level will work for 45s and jump to next level automatically. From Levels 5 to Level 9 you can adjust manually according to our own comfort. The higher the level, the stronger the suction.

Research shows that in the most comfortable situation, the sucking would be more effective.

Mode Key

There's three working modes, Massage, Expression and Milk Collection. All working modes get 9 adjustable levels. When turn on machine, default working mode is Massage mode. First press this button will turn to Expression mode, second press to Milk Collection mode and press again back to Massage mode.

- After you have expressed your milk, press the power button to switch off the breast pump and remove the tube from the diaphragm cover.
- Carefully remove the collection cup from the breast while remaining upright.

- Place the milk collection cup down on a flat surface.
- Pour expressed milk into sterilized breastmilk storage bags or bottles, seal tightly, label clearly with the date and put in fridge, cooler bag, or freezer immediately.

Reminder:

During sucking, some mother would like to repeat stimulate and suck to get a second milk ejection reflex. Then you can adjust to gear one to four to stimulate lactation. If you want a normal sucking, just adjust to gear five to nine. After sucking, please turn off the power and disassembly the accessories.

Note: This breast pump will automatically turn off by default after working for 30 minutes. The breast pump body should work in normal temperature.

Attentions

- 1 Please carefully read the instructions before use
- 2 Don't wash the breast pump body in the water or other liquids.
- 3 Don't put the breast pump into steam sterilizer for disinfection.
- 4 Please use the attached adapter instead of any other ones to avoid damage to the breast pump body.
- 5 Pay attention to the battery polarity while using a rechargeable battery. Do not cause a short circuit, so as to avoid explosion or fire. Please use the AC adapter of 100-240Vinput and DC5V, 1A output.
- 6 If the AC adapter is damaged, please choose the same model adapter with same output voltage and current in our company or to maintenance and replace the adapter by professionals.
- 7 Dry your hands before operating this device, so as to avoid any water get into the body and cause damage.
- 8 If there's water get into the body because of improper operation, we will charge corresponding fee for your repair.

Storing and heating your breast milk

- Freshly expressed breastmilk can be stored at room temperature between 16C and 25C (60F to 77F) for up to 6 hours.
- It is best to use refrigerated breastmilk within four days, but it can be refrigerated at 4C (39F) or colder for up to 5 days.
- Breastmilk can be frozen for up to 6 months at -18C (0F).
- Breastmilk should not be kept in the fridge door as the temperature is not as consistent as other areas, such as the back of the fridge.
- Defrost frozen breastmilk in the fridge overnight. Or hold the bag of frozen milk under warm running water. Or place the bag or bottle of breastmilk in a bowl of lukewarm water for a few minutes. Or use a bottle warmer.
- Don't heat breastmilk in the microwave as the uneven heating may cause hot spots in the liquid which could burn the baby's mouth/throat.
- Gently swirl defrosted milk to mix in any separated fat without shaking vigorously so as not to destroy any of the nutrients.
- Never refreeze defrosted breastmilk.

After sale warranty service card

Thanks for your choosing our products. For your interest, please keep your warranty card in safe. If you have any quality problems, please contact the dealer.

User name:	Product name:
User Tel:	Product model:
Purchased goods:	Purchase date :
Purchase address:	

Maintenance record:

Date	Maintenance content	maintenance personnel	user signature

- 1 On the premise that users operate according to this instructions, it got one year of free maintenance from the date of purchase. Please contact with the purchase department.
- 2 We shall not provide free maintenance service for the following personal reasons that cause failures, such as:
 - A. Failures caused by disassembly or modification the product without permission.
 - B. Failures caused by beating or dropping during using or transporting.
 - C. Failures caused by lacking of proper maintenance.
 - D. Failures caused by operations that is not in accordance with the instructions
 - E. Failures caused by the improper maintenance in the repair shops that is not authorized by our company.
- 3 When require a free maintenance service, you must hold the purchase invoice and the warranty card.
- 4 Maintenance services beyond the warranty scope will be charged according to the regulations.