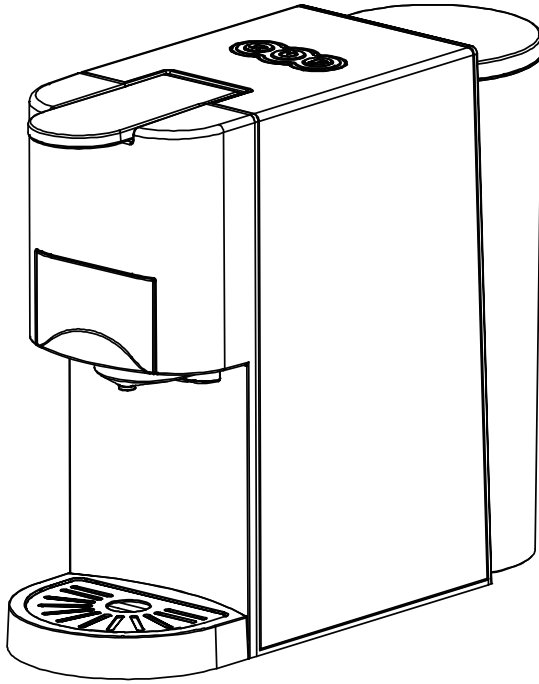


HiBREW[®]



COFFEE MACHINE

WITH DIFFERENT ADAPTERS

Congratulation on your purchase!

This Multi Coffee Capsule machine is manufactured with the greatest care. If you look it after properly it will reward you with many years of good service. Before using your new machine, please read this operating manual carefully, paying particular attention to the safety precautions.

Content

Safety precautions
Notes on this operating manual
Unpacking
Starting up
Overview of machine parts and controls
Before using for the first time
Filling/refilling the water tank
Flushing out the machine/internal piping
Capsule type can be used
Energy saving mode
Decalcification
Coffee flow setting
Factory reset
Clean the coffee machine
Matters needing attention
Troubleshooting
Technical data

Safety precautions

Please take time to read these safety precautions carefully before connecting your machine to the power supply. It is essential to follow them and the operating instructions.

- First read this entire operating manual.
- Danger of electric shock! Never immerse the machine in water or any other liquid.
- Connect only to a properly grounded power point.
- To make sure that the machine is switched off, remove the plug from the power point.
- Always pull out the power plug before:
 - * Relocating the machine.
 - * Cleaning or maintenance.
 - * Long periods of disuse.
- Never clamp or run the power cable over sharp corners or edges.
- Danger of electric shock! Damaged power cables may only be replaced at the customer service centre.
- Danger of electric shock! Never touch the power plug/socket/cable or the machine with damp or wet hands. Never unplug by pulling out the power cable; always remove the plug.

- If you need an extension cable, make sure it is suitable for your machine (3-pole grounded, 1.5 mm² conductor cross-section), and lay the cable to avoid tripping.
- Danger of scalding! Never move the machine during operation!
- Never operate the machine without water
- Always make sure there is water in water tank not less than minimum level.
- Danger of burning! Never touch very hot parts of the machine (e.g. brew unit during operations).
- Danger of scalding! Do not touch the steam or water jets.
- Danger of scalding! Do not move the operating lever when the machine is still under pressure making Coffee .
- Do not use the machine in case of:
 - * Faulty operation.
 - * Damaged power cable.
 - * After falling or other damage.
 - * In such cases immediately have the machine checked and repaired if necessary at the customer service centre.
- The machine location must meet the following requirements:
 - * Choose a dry, stable and level support surface not immediately underneath the power point. at least 60 cm away from the washbasin and taps.
 - * Never place on flammable/fusible surfaces or equipment.
 - * Never place the machine or power cable on or nearer than 50 cm to hot surfaces or open flames.
 - * Never cover the machine during operation.
- Keep children away from the machine during operation.
- Only use the machine in dry rooms.
- Danger of tripping! Do not let the power cable hang down.
- This machine is only intended for household use.
- Pull out the power plug and allow the machine to cool down completely before cleaning and or Maintenance.
- To prevent damage, never use replacement parts or accessories not recommended by the manufacturer
- This appliance is not intended for use by young children or infirm persons unless they have been adequately supervised by a responsible person to ensure that they can use the appliance safely , Young children should be supervised to ensure that they don't play with the appliance .
- If the supply cord is damaged, it must be replaced by the manufacturer, its service agent or similarly qualified persons in order to avoid a hazard.

This appliance is intended to be used in household and similar applications such as:

- * Staff kitchen areas in shops, offices and other working environments;
- * Farm houses;
- * By clients in hotels, motels and other residential type environments;
- * Bed and breakfast type environments.

Notes on this operating manual

This operating manual cannot cover all possible circumstances. For further information or in case of problems not adequately covered in this operating manual, please contact the service and sales centre.

Please keep this operating manual safe and pass it on to the next user.

Unpacking

- Remove your Multi Capsule coffee machine from its packaging.
- After unpacking, please check that the following parts are included:
 1. Water tank
 2. Coffee machine
 3. Manual
 4. Adapters

Note:

- Check that your home power supply voltage is the same as marked on the machine rating plate
- Destroy all the plastic bags to prevent danger to children!

Tip:

Keep the packaging for transporting the machine (e.g. for removals, servicing, etc.)

Note:

You may find a little water remaining in the machine.

In order to ensure that this machine works perfectly, it was tested with water before leaving the factory.

- DANGER OF FROST

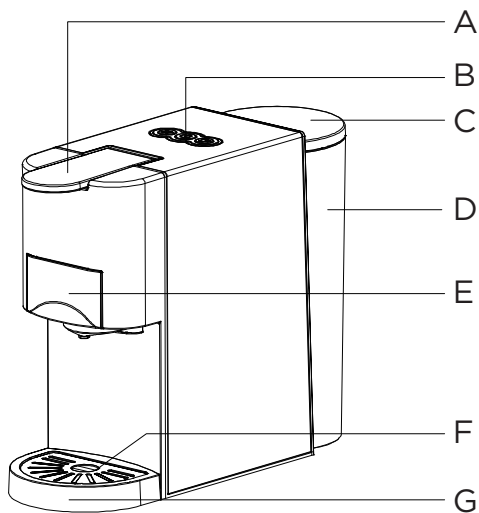
Starting up

Before using for the first time

Caution: Improper handling of electrical equipment is dangerous and can be lethal. Please pay attention to the safety precautions in this manual, in particular the following:

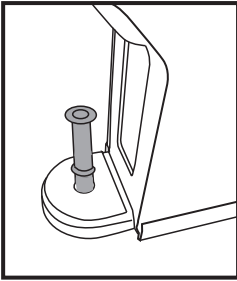
- Danger of scalding: beware of hot water!
- Do not operate the machine with an empty water tank or water is less than MINIMUM level.
- Do not open the handle when the machine is brewing.
- Always pull out the power plug before cleaning the machine.
- Only use the machine in a dry room.
- Thoroughly rinse out the water tank with fresh water before using for the first time. Clean the Capsule coffee machine using a damp cloth only.

Overview of machine parts and controls

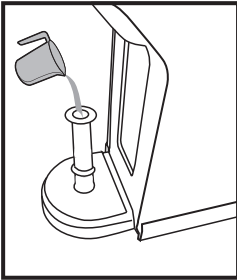


No.	Name
A	Handle
B	Buttons
C	Water tank cover
D	Water tank
E	Brewing basket
F	Drip tray cover
G	Drip tray (removable)

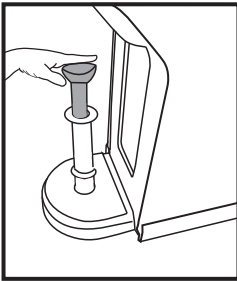
Before using for the first time or after long pauses (e.g. holidays) the machine may be difficult to pump water, this short procedure can help pump to self priming by using the pipe to fill water into the circuit manually prior to turn on the machine for first refill.



Step 1# :
insert the pipe into the water entrance.



Step 2# :
fill water into the pipe.



Step 3# :
inject the water from pipe into the machine so that
the internal circuit is filled with water.

After above steps, the machine will be able to pump water out normally.

* If necessary, repeat the steps for 2 or 3 times.

Before using for the first time or after long pauses (e.g. holidays) the machine must be flushed out. This short procedure can flush out and cleans the internal piping thoroughly.

There are two ways to fill the water tank: directly into the machine, by using for example a jug, or by removing the water tank.

1

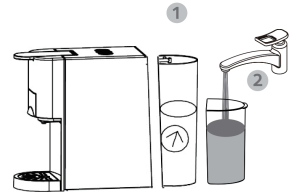
Filling without removing the tank

- raise the water tank cover
- Fill the tank with cold fresh water (the maximum temperature of the water is 35°C)
- the maximum capacity is 0.8 litre
- low down the tank cover



Filling by removing the water tank

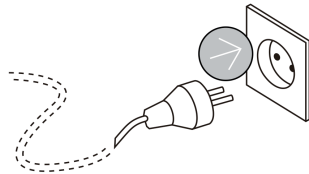
- Hold the water grip at tilting angle as shown in direction 1 to remove the water tank from the machine.
- Fill the tank up to the "MAX" mark with cold fresh water (the maximum capacity is 0.8 litre).
- Slide the water tank slowly on water tank base, when the water tank outlet is inserted in the inlet receptacle, pushing firmly on the water grip as shown in direction 2 to lock the water tank.



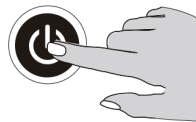
Flushing out the machine and internal piping

Plug in the appliance and turn it on.

2

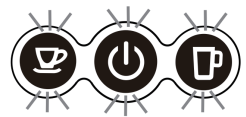


3



Press the switch button

The lights at buttons become steady when the machine is heated up, heating up time is 45 seconds approximately.



4

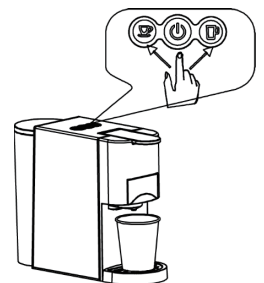
Press the small cup / big cup button, wait for the appliance to complete the flush out.

- Before pressing the button, make sure that:
- the handle is closed without capsule inside.
- the water tank is full.
- the water tank is firmly in place, otherwise water may leak
- a large bowl (250ml size or above) is placed under the dispenser.

press the small cup / big cup button to start flush out.

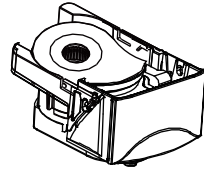
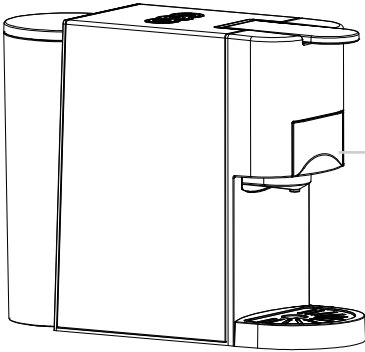
- Open the handle when the flush out process stopped automatically.

* Suggest to select/press big cup button to flushing out the machine and the internal pipe

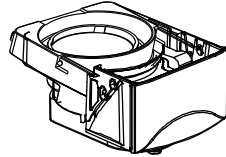




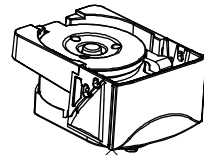
Tips: The machines has different adaptor for different capsules, details refer to below



For Nespresso Capsule



For Dolce Gusto Capsule



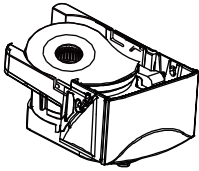
interchangeable



Coffee Powder



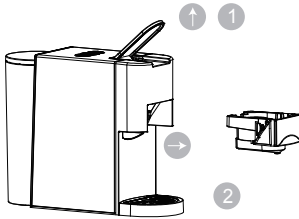
E.S.E POD



For Nespresso capsules

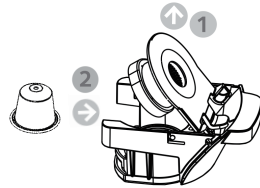
1

- Open the handle
- Pull out the brewing basket for Nespresso capsules, this is normal performe.



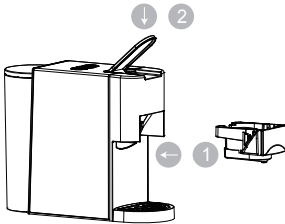
2

- Press the brewing basket cover lid
- Insert a capsule to the brewing basket.



3

- Push in the brewing basket with capsule.
- Close the handle. normal performe.



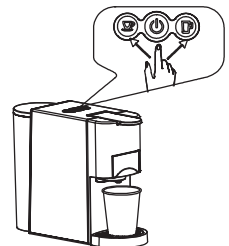
4

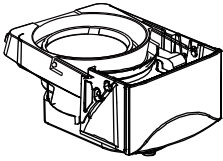
Place a cup under the dispenser

- Press the desired coffee button only once
- The selected button will blink and the machine will start brewing then complete the brewing process, dispensing will stop automatically when reaching the default brewing time (+/-25S for small cup,+/-47s for big cup),default setting can be programmed, please refer to "how to program brewing time" instruction.

Raise the handle and pull out the brewing basket to inject used capsule into the container.

Tips: when press the button, maybe the desired button LED flash a few seconds first ,then start brewing. the flash process is for heating, this is normal performe.

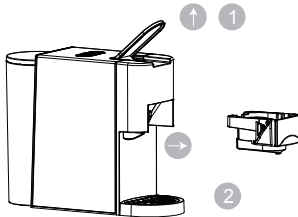




For Dolse-Gusto capsules

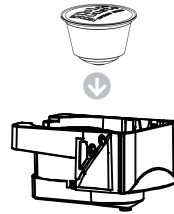
1

- Open the handle
- Pull out the brewing basket for Dolse-Gusto capsules, this is normal performe.



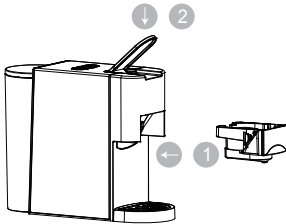
2

- Insert a capsule to the brewing basket.



3

- Push in the brewing basket with capsule.
- Close the handle. normal performe.



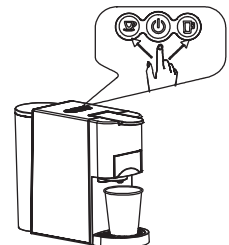
4

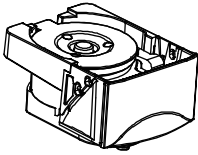
Place a cup under the dispenser

- Press the desired coffee button only once
- The selected button will blink and the machine will start brewing then complete the brewing process, dispensing will stop automatically when reaching the default brewing time (+/-25S for small cup,+/-47s for big cup),default setting can be programmed, please refer to "how to program brewing time" instruction.

Raise the handle and pull out the brewing basket to inject used capsule into the container.

Tips: when press the button, maybe the desired button LED flash a few seconds first ,then start brewing. the flash process is for heating, this is normal performe.

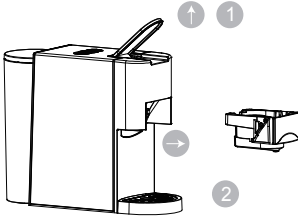




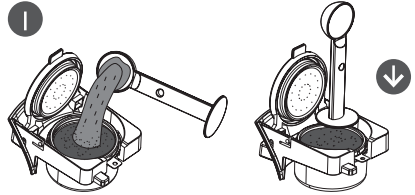
For Coffee powder

1

- Open the handle
- Pull out the brewing basket for Dolce-Gusto capsules, this is normal performe.



2

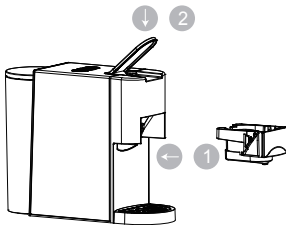


Coffee powder

Press down the coffee powder

3

- Push in the brewing basket with capsule.
- Close the handle. normal performe.



4

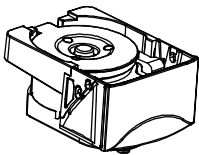
Place a cup under the dispenser

- Press the desired coffee button only once
- The selected button will blink and the machine will start brewing then complete the brewing process, dispensing will stop automatically when reaching the default brewing time (+/-25S for small cup,+/-47s for big cup),default setting can be programmed, please refer to "how to program brewing time" instruction.

Raise the handle and pull out the brewing basket to inject used capsule into the container.

Tips: when press the button, maybe the desired button LED flash a few seconds first ,then start brewing. the flash process is for heating, this is normal performe.

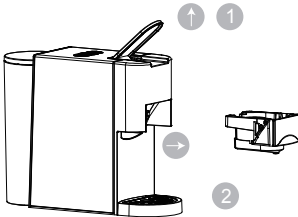




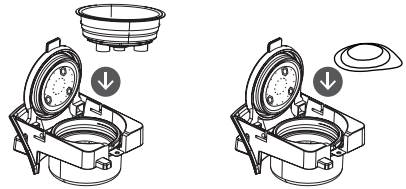
For E.S.E. pod (44 mm)

1

- Open the handle
- Pull out the brewing basket for Dolce-Gusto capsules, this is normal performe.



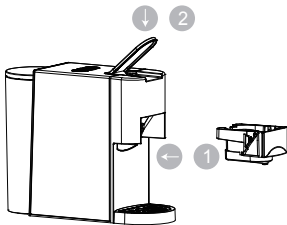
2



E.S.E. pod (44 mm)

3

- Push in the brewing basket with capsule.
- Close the handle. normal performe.



4

Place a cup under the dispenser

- Press the desired coffee button only once
- The selected button will blink and the machine will start brewing then complete the brewing process, dispensing will stop automatically when reaching the default brewing time (+/-25S for small cup,+/-47s for big cup),default setting can be programmed, please refer to "how to program brewing time" instruction.

Raise the handle and pull out the brewing basket to inject used capsule into the container.

Tips: when press the button, maybe the desired button LED flash a few seconds first ,then start brewing. the flash process is for heating, this is normal performe.



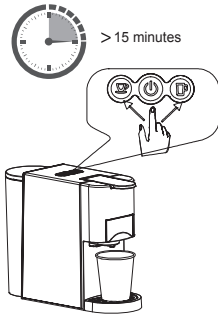
Standby Mode

Factory Default setting: Standby Mode

Time: 15 mins

It means the machine will be turn off after 15 mins,and all the indicator lights will be off.

To press the switch button to activate the standby mode again if the machine is in Standby mode



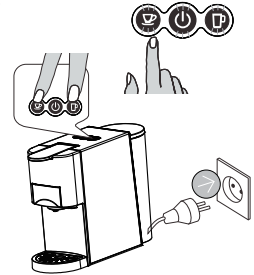
Standby mode setting:

Keep pressing the small cup button and big cup button,insert the plug to the socket .

Switch button light will be on.

Press small cup button,Small cup button light off,Standby mode cancelled.

Press small cup button,small cup button light on,standby mode activated.

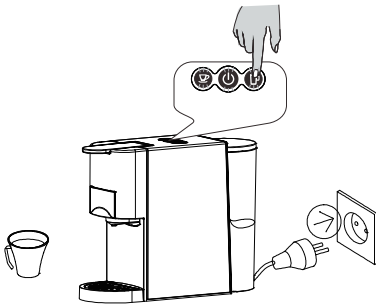


Factory default setting

Press the big cup button, insert the plug to the socket.

The indicator light of buttons will flash twice.

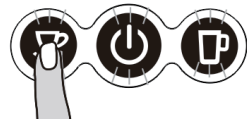
It means the machine come back to factory default setting.



Coffee Volume Setting

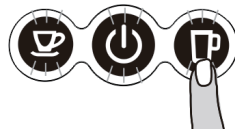
Small Cup volume setting

1. Put coffee cup under the coffee outlet
2. The machine is in normal working condition.Keep pressing the small cup button,then release the button till you get the coffee you want(Min:15S,Max: 90S)



Big Cup volume setting

1. Put coffee cup under the coffee outlet
2. The machine is in normal working condition. Keep pressing the big cup button, the release the button till you get the coffee you want(Min:10S,Max: 90S)



Cleaning



Risk of fatal electrical shock and fire.

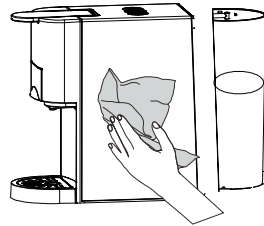
- Never immerse the appliance or part of it in water.
- / Be sure to unplug the machine before cleaning.
- / Do not use any strong cleaning agent or solvent cleaner.
- / Do not use sharp objects, brushes or sharp abrasives.
- / Do not place in a dishwasher.

Brewing cup cleaning



Holistic cleaning

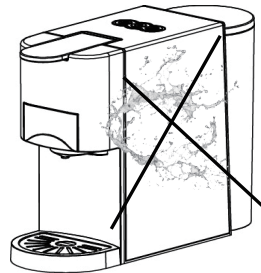
Dry with a fresh and clean towel, cloth or paper and reassemble all parts. Clean the coffee outlet and inside the machine regularly with a damp cloth.



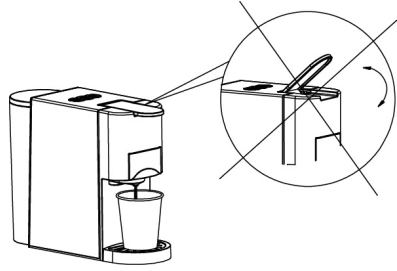
Warning tips



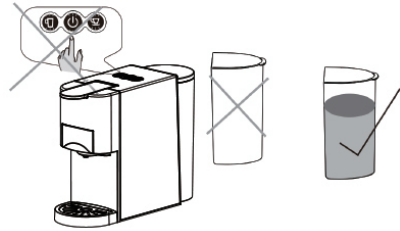
Prohibit to pull water to the machine



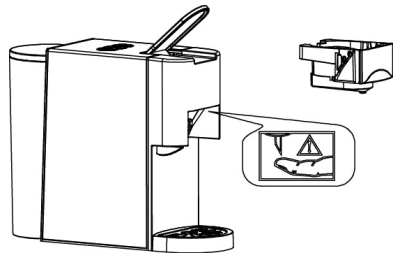
Prohibit to open the handle when brewing



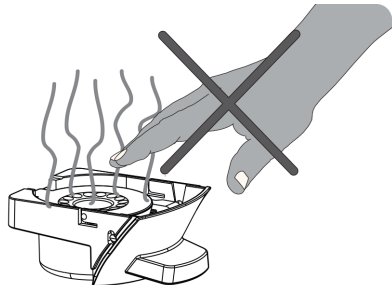
Before brewing, to be sure there is not less 20ml water keep in the water tank.



There is sharp needle upper the Capsule Adaptor.
Prohibit to put the hand or finger to any part near the needle after the adaptor is removed.



Daptor is still very hot after brewing Be careful the HOT!



Energy saving mode

The machine enters energy saving model automatically once the machine is idle for 15 minutes, the back light of two buttons and power indicator will off.

To quite energy saving mode, please press power button , appliance will start to warming up with lights blinking, when the buttons are lit steadily, the machine is ready to brew coffee.

Decalcification / Maintenance

Drinking water varies according to region. The lime particles in hard drinking water are deposited as residues in the machine and can block the piping and cause damage.

To prevent this, be sure to decalcify the machine at the very least after making 300 to 400 cups of coffee or, in any case if the output falls significantly or, after one or two months.

Decalcification must be done correctly to prevent damage. So it is essential to follow these instructions.

Important:

- Never clean the machine with vinegar. This causes damage and makes your coffee taste bad
 - Damage caused by incorrect decalcification or failure to decalcify is not covered by the guarantee
 - Caution: beware of hot water!
1. Recommendations: purchase commercially available decalcifier (decalcifying liquid), diluted according to the manufacturer's instructions; pour the mixture in the water tank.
 2. Make sure there is without capsule inside the machine.
 3. Place a large bowl under the dispensing head to collect the decalcification diluted and lime residues
 4. Fill the water tank with water to maximum level mixed with decalcifying solution, make sure the solution is dissolved completely.
 5. Press the lungo button to run decalcifying water as you brew coffee normally, repeat for several times to run out the entire tank water.
 6. Repeat the process to run another tanks of water mixed with decalcifying solution.
 7. Repeat the process to Flush out the intern circuit with a tank of fresh water (without the decalcifying solution) to clean the internal circuit completely.

PROBLEM	CAUSE	SOLUTION
No coffee is brewed.	The water tank is empty.	Fill water in the water tank.
The coffee is not hot enough.	-the Cold cups / mugs. - Scale build-up in machine. - Cold machine.	Preheat cup / mug. - Descale. - For cold machine, brewing a cup of water to warm up the circuit.
Water on table	- Water tank is leaking. - drip tray is full of water.	- Check if the valve on water tank is stuck. - empty the drip tray.
Handle can not close	- the brewing basket is not placed well	-Push the brewing basket into correct position

Rated Voltage:	220-240V AC
Rated Frequency:	50Hz
Rated Power:	1450W
N.W./G.W.:	2.6/3.5 kg appr.
Pump Pressure:	Max. 19 Bars
Water Tank Capacity:	0.8L
Size:	110mm(W)* 270mm(L) * 250mm(H)
ProtectionClass:	I

Design or execution changes are reserved in the interest of technical progress.



In compliance with Directives: 2002/95CE, 2002/96/CE and 2003/108/CE on the restriction of the use of dangerous substances in electric and electronic equipment as well as as well as their waste disposal. The symbol with the crossed dustbin shown on the package indicates that the product at the end of its service life shall be collected as separate waste. Therefore, any products that have reached the end of their useful life must be given to waste disposal centres specialising in separate collection of waste electrical and electronic equipment, or given back to the retailer at the time of purchasing new similar equipment, on a one for one basis. The adequate separate collection for the subsequent start-up of the equipment sent to be recycled, treated and disposed of in an environmentally compatible way contributes to preventing possible negative effects on the environment and health and optimises the recycling and reuse of components making up the apparatus. Abusive disposal of the product by the user involves application of the administrative sanctions according to the laws.