



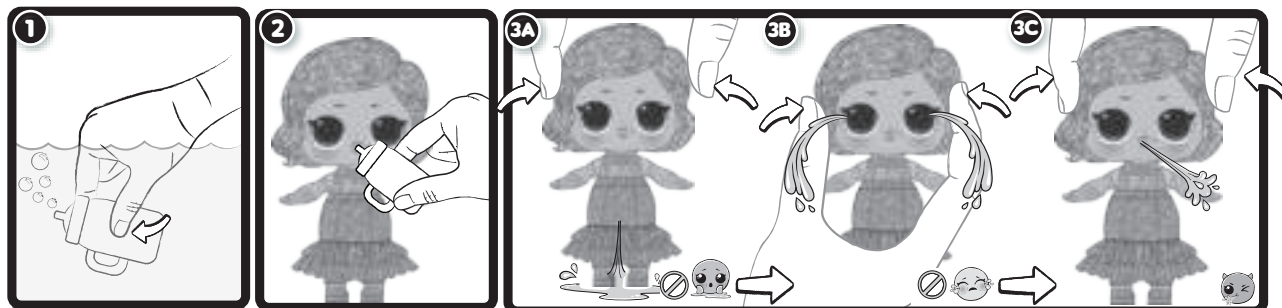
AGES 3+  
ADULT SUPERVISION REQUIRED

**WARNING:**  
CHOKING HAZARD—Small parts.  
Not for children under 3 years.

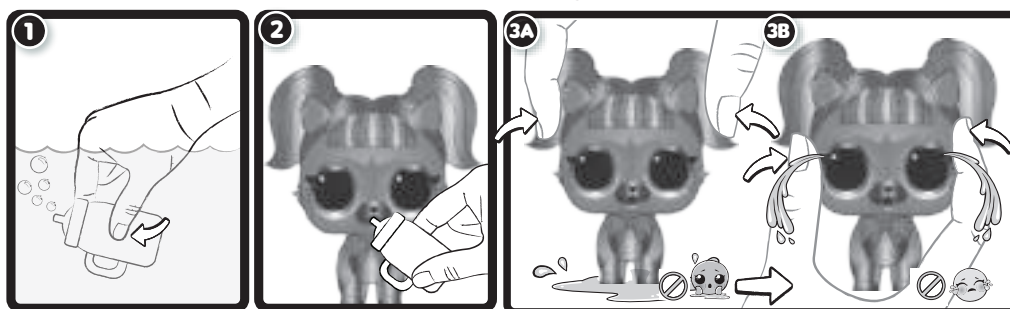
SKU: 576532

## DOLL FEATURES

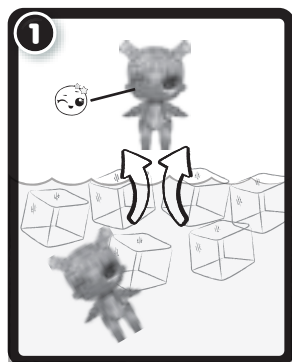
Illustrations are for reference only. Styles may vary from actual contents.



## PET FEATURES



## LIL SISTERS™ FEATURES

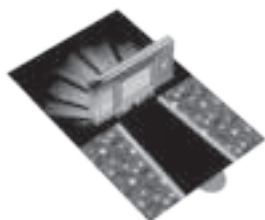


### COLOR-CHANGE

- Color change will start at approximately 59°F (15°C), but best results occur if the ice water is chilled to approximately 32°F (0°C) or colder.
- Only Lil Sisters™ change color and will not retain water from the bottle.
- Color change will only work on certain parts of the doll's body or accessories. Not all included accessories change color.
- If color change does not work properly or quickly, the temperature of the doll's body may be too close to the temperature of the water.
- Color change temperatures may vary according to weather conditions.
- The color-change effect of the doll's body has a lengthy, but limited lifespan.

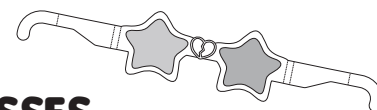
### IMPORTANT INFORMATION

- Before beginning, cover the play area to protect from possible water damage.
- Your dolls will either cry, pee or spit.
- Your pets will either pee or cry.
- One of your little sisters has glow in the dark hair.
- For best results, fill the bottle and feed the dolls or pets two times.
- Do not place the dolls or pets in extremely hot water.
- Do not feed the dolls or pets extremely hot water.
- An adult must be present when children are playing with water.
- Do not store the dolls or pets in direct sunlight for extended periods of time.
- Exposure to sunlight may deactivate color change feature.
- Squeeze out all water from the bottle and the doll after each use.
- Thoroughly drain the dolls and pets on a dry towel in a well-ventilated area after use and before storing.
- Air dry only. Do not place in the dryer or subject to excessive heat.
- Pets and LIL SISTERS™ will not come with any fashion accessories, only tots will.



## MOVIE SCENE STRIPS

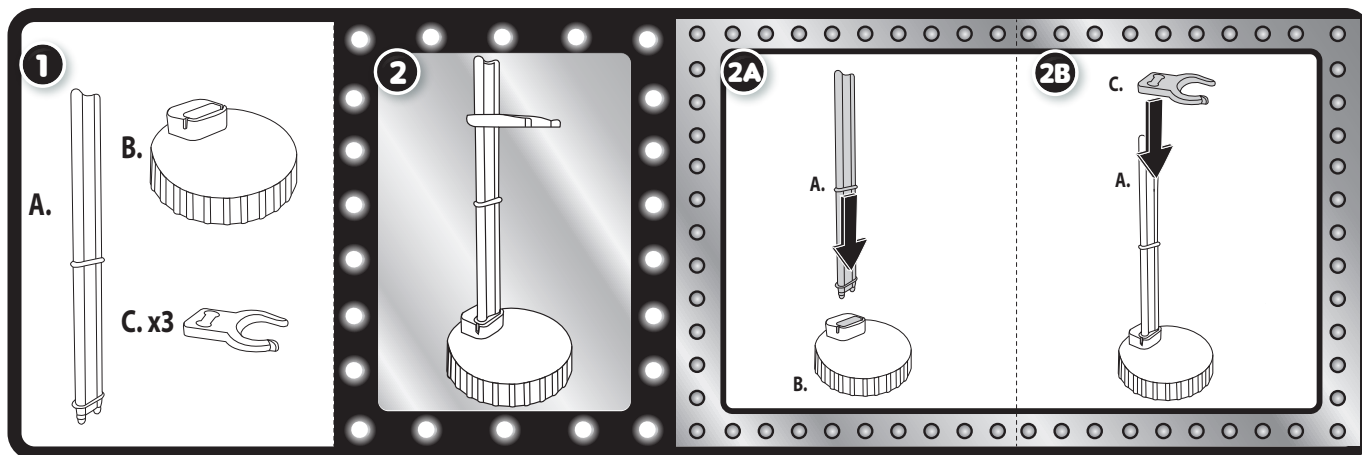
- Movie scene strips are included for you to view using your CINE-MATIC screen.
- Slide your scene strips one at a time down into the viewer from the top.



## 3-D GLASSES

- Use the heart shaped nose clip to connect both pieces of your 3-D glasses.
- Use your 3-D glasses to see secret messages throughout the packaging.
- Messages will vary based on which color lens you are looking through. There are plenty of messages and pictures waiting to be seen!
- Reveals are specific to the pink lens, blue lens and both lenses.
- 3-D glasses are not meant to be used as sunglasses or for direct observation of the sun.
- 3-D glasses do not offer UV protection.
- Not suitable for driving.

# DOLL STAND



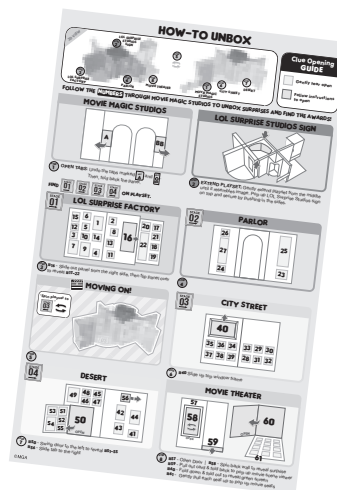
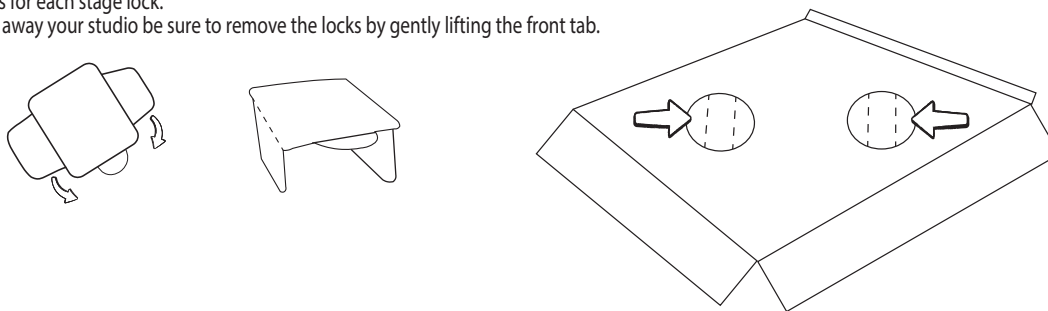
## IMPORTANT INFORMATION

Follow the steps on the guide (included) to open all the boxes.

## STAGE LOCKS

Paper locks have been included to provide longer lasting stability of the top platform. After you have pulled out your studio, follow these steps:

1. Fold side tabs down as pictured.
  2. Locate slits on the top platform as pictured and indicated. NOTE: There are two sets of slits on each side of the platform.
  3. Slide in both tabs for each stage lock.
- When ready to put away your studio be sure to remove the locks by gently lifting the front tab.



Please keep this manual as it contains important information.



0421-0-E/INT  
Printed In China

www.LOLsurprise.com  
©2021 MGA Entertainment, Inc.  
L.O.L. SURPRISE! O.M.G. OUTRAGEOUS MILLENNIAL GIRLS™ and MOVIE MAGIC STUDIOS™ are trademarks of MGA in the U.S. and other countries. All logos, names, characters, likenesses, images, slogans, and packaging appearance are the property of MGA.

**MGA Entertainment, Inc.**  
9220 Winnetka Ave., Chatsworth, CA 91311  
U.S.A.  
(800) 222-4685

**MGA Entertainment UK Ltd.**  
50 Presley Way, Crownhill, Milton Keynes,  
MK8 0ES, Bucks, UK  
+ 0800 521 558

The preferred method of contact for Customer Service is through our e-mail contact form at [www.mgae.com](http://www.mgae.com)

**MGA Entertainment (Netherlands) B.V.**  
Baronie 68-70, 2404 XG Alphen a/d Rijn, The Netherlands  
Tel: +31 (0) 172 758038

**Imported by MGA Entertainment Australia Pty Ltd**  
Suite 2.02, 32 Delhi Road  
Macquarie Park NSW 2113  
1300 059 676