



When finished, switch off the trimmer, and clean your nose.



Clean trimmer with supplied cleaning brush.

► Cautions

Do not use the trimmer if you have severe nasal congestion, nasal scab and heavy fever.
Keep the trimmer head dry and clean.
Operate gently to avoid touch on the nasal cavity.
Do not take deep breath when operating.
It is suggested to keep nose hair in suitable length instead of cut them off.

Clean

Remove trimmer head and sweep the hair after using.
The trimmer head can be rinsed (main body cannot), install after dry it up.

Storage

Keep it away from high temperature.
Keep it away from corrosive liquid.
Keep it out of reach of children.

4

MASWATER

SHENZHEN GRANDANT CREATORS E-COMMERCE LIMITED

Product Name: NOSE HAIR TRIMMER

Model No.: NHT100

Specification: 28 * 31 * 129.4mm(L*W*H)

Standard: GB 4706.1-2005

Manufacturer: SHENZHEN GRANDANT CREATORS E-COMMERCE LIMITED

Address: The 6th floor, 4th Building, Baoshu technology industrial park,
Baotian 3th Road, Bao An District, Shenzhen City, China

Tel: +86-755-29553043

Place of origin: Shenzhen, China

CE RoHS



MASWATER



NHT100

NOSE HAIR TRIMMER

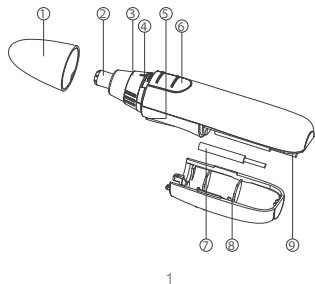
Please read the user manual carefully before using

► Specifications

No.	Item	Unit	Spec.
1	Rated working power	V	1.5V
2	Rated working current	mA	≤850mA
3	Power supply	/	1 AA battery (1*1.5V)

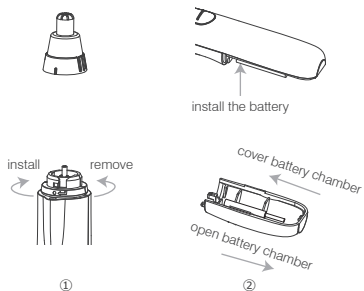
► Parts description

- ① Protective cap ② Trimmer head ③ Mount area
 ④ Hair storage area ⑤ LED operation light ⑥ On/off switch
 ⑦ Cleaning brush ⑧ Slot for cleaning brush
 ⑨ Battery chamber



► How to install?

- ① Twist clockwise/anti-clockwise to mount /remove the trimmer head.
 ② Open the battery compartment at the bottom, and install 1pc AA battery.



► Functions

The unique stereo arc outer and groove inner design of latest Nose Hair Trimmer help remove 360° nose/ear hair painlessly. Lightweight and compact pen shape appearance, included led light and cleaning brush for quick maintenance.

2

► Indicators

No.	Status	Indicators
1	Power on	Switch up, LED light on and trimmer start working.
2	Power off	Switch down, LED light off and trimmer stop working.

► How to use?

Below are the instructions:



Clean face and nose before using.



Switch on the trimmer.



Put the trimmer close to your nose slowly and start the trimming.



After 3 sessions, please check the effect to decide to continue or not.

3