



Welcome to Philips!

For an optimal experience register your product at: www.philips.com/welcome

Philips and the Philips Shield Emblem are registered trademarks of Koninklijke Philips N.V. and are used under license. This product has been manufactured by and is sold under the responsibility of MMD Hong Kong Holding Limited or one of its affiliates, and MMD Hong Kong Holding Limited is the warrantor in relation to this product.

LEA CUIDADOSAMENTE ESTE INSTRUCTIVO ANTES DE USAR SU APARATO

Frequency range: 2.402-2.480GHz | Transmitter power: s 4dBm

ADVERTENCIA: Cuidados con la utilización e descarte de pilhas e baterias. Não descarte as pilhas e baterias juntamente ao lixo doméstico. O descarte inadequado de pilhas e baterias pode representar riscos ao meio ambiente e à saúde humana. Para contribuir com a qualidade ambiental e com sua saúde, a Philips recobra pilhas e baterias comercializadas ou fornecidas com seus produtos após seu fim de vida, que serão encaminhadas à destinação ambientalmente correta. A Philips dispõe de pontos de coleta em Assistentes Técnicas.



Contenido: 1 pieza
FCC ID: 2AR25SHB2505
IC: 24589-SHB2505
CNC ID:



* Manuel d'utilisation complet dans toutes les langues disponibles sur www.philips.com/support



Este equipamento não tem direito à proteção contra interferência prejudicial e não pode causar interferência em sistemas devidamente autorizados. Este produto está homologado pela ANATEL, de acordo com as procedimentos regulamentados pela Resolução 302/2000, e atende aos requisitos técnicos aplicados. Para maiores informações, consulte o site da ANATEL: www.anatel.gov.br

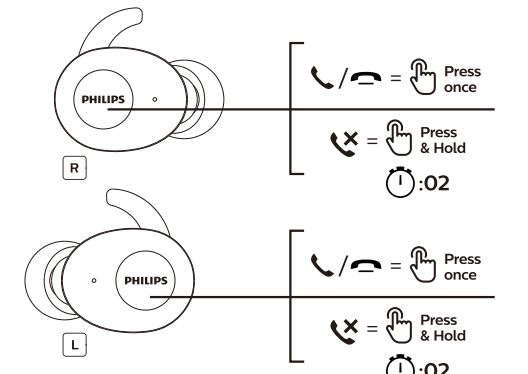
www.philips.com/support

SHB2505/10

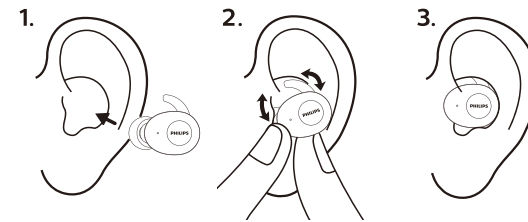
6. Volume control



7. Call features



8. How to wear

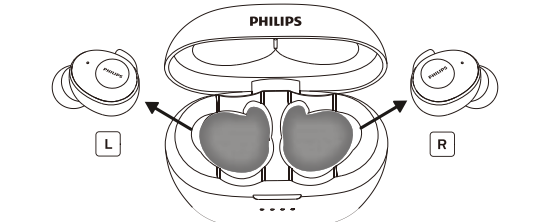


9. How to reset

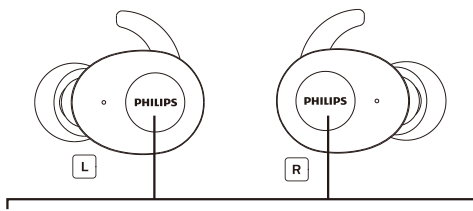
1. Remove the old device



2. Power on



3. Pairing



1. Take both headsets out from charging case
2. White and blue lights flashed
3. Turn on BT select Philips SHB2515
4. Light off
5. Connected

For more details, please refer to www.philips.com/welcome or original QSG in pack.

Notice of compliance
The device complies with the FCC rules, Part 15. Operation is subject to the following two conditions:
1. This device may not cause harmful interference, and
2. This device must accept any interference received, including interference that may cause undesired operation.
FCC rules
This equipment has been tested and found to comply with the limits for a Class B digital device, pursuant to part 15 of the FCC Rules. These limits are designed to provide reasonable protection against harmful interference in a residential installation. This equipment generates, uses and can radiate radio frequency energy and, if not installed and used in accordance with the instruction manual, may cause harmful interference to radio communications.
However, there is no guarantee that interference will not occur in a particular installation. If this equipment does cause harmful interference to radio or television reception, which can be determined by turning the equipment off and on, the user is encouraged to try to correct the interference by one or more of the following measures:
• Relocate the receiving antenna.
• Increase the separation between equipment and receiver.
• Connect the equipment into an outlet on a circuit different from that to which the receiver is connected.
• Consult the dealer or an experienced radio/TV technician for help.
FCC Radiation Exposure Statement:
This equipment complies with FCC radiation exposure limits set forth for an uncontrolled environment. This transmitter must not be co-located or operating in conjunction with any other antenna or transmitter.
Canada
This device complies with Industry Canada licence-exempt RSS (standard). Operation is subject to the following two conditions: (1) this device may not cause harmful interference, and (2) this device must accept any interference received, including interference that may cause undesired operation.
CAN ICES-3(B)/NMB-3(B)
IC Radiation Exposure Statement:
This equipment complies with Canada radiation exposure limits set forth for uncontrolled environments. This transmitter must not be co-located or operating in conjunction with any other antenna or transmitter. Caution: The user is cautioned that changes or modifications not expressly approved by the party responsible for compliance could void the user's authority to operate the equipment.

Este equipamento opera em caráter secundário, isto é, não tem direito à proteção contra interferência prejudicial, mesmo de estações do mesmo tipo, e não pode causar interferência a sistemas operando em caráter primário.

警告：充電には認可された輸入事業者等が明記されたUSB充電器DC 5Vのみをお使いください。交通事故の原因になります。

注意事項：
1. 自転車、自動車、オートバイなどの運転中には、ヘッドホンを使用しないでください。交通事故の原因になります。

2. 踏み切り、車の通る道、工事現場など周囲の音が聞こえないと危険な場所でヘッドホンを使用しないでください。事故や怪我の原因となります。

3. 接続されたポータブル機器の音量を上げすぎないようにご注意ください。耳を刺傷するような大きな音で長時間聴けてしまうと、聴力に悪い影響を与えることがあります。

4. 高温や直射日光の当たる場所、水のかかる場所には置かないでください。故障の原因になります。

5. 故障したときは使用しないでください。

6. 強い衝撃を与えないでください。

7. 分解しないでください。故障の原因となります。

保証期間：保証期間中に正常な使用状況のもとで故障した場合は、本記載内容に基づき無償修理いたします。万一故障した場合は、お買い上げの販売店又はフィリップスサポートセンターまでお申し込みください。なお、次のような場合は、保証期間内でも有償修理とさせていただきます。

1. 本書のご提示がない場合。

2. お買い上げ販売店名が記載及び印記、お買い上げ年月日がない場合。

3. ご使用上の誤り・不当な修理や改造による故障及び損傷。

4. 火災、地震、風水害、雷、その他の天災地災、虫害、損害、公害、ガス害や異常電圧、指定外使用電源（電圧変動）による故障及び損傷。

5. 不具合の原因が本製品以外（外部要因）による場合。

6. 一般家庭用以外（例えば業務用）での使用による故障及び損傷。

7. 消耗部品の自然な消耗・劣化による故障。

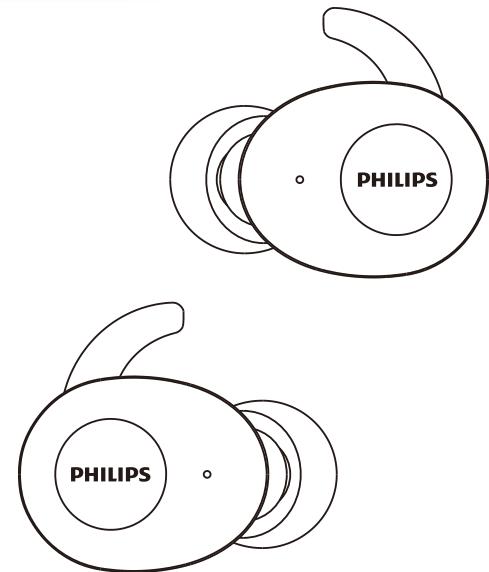
8. お買い上げ後の自然な消耗、移動、落下及び砂かぶり、水かぶりなどによる故障及び損傷。

9. その他弊社の判断に基づき、無償保証が認められない場合。

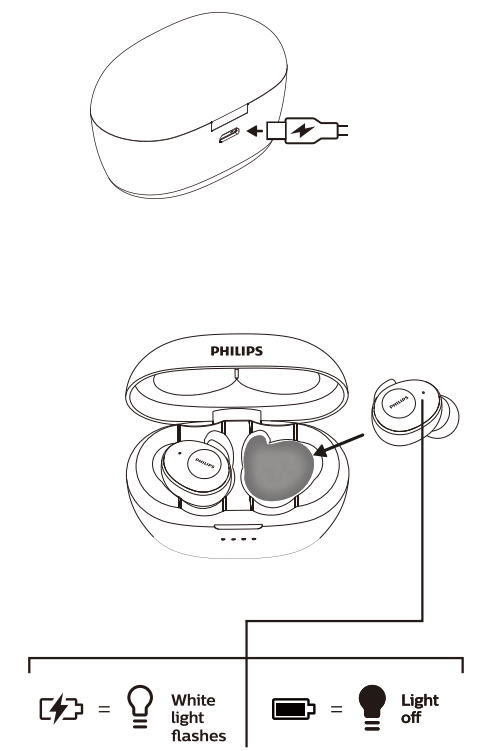
本書は、日本国内においてのみ有効です。（This warranty is valid only in Japan）



Quick start guide

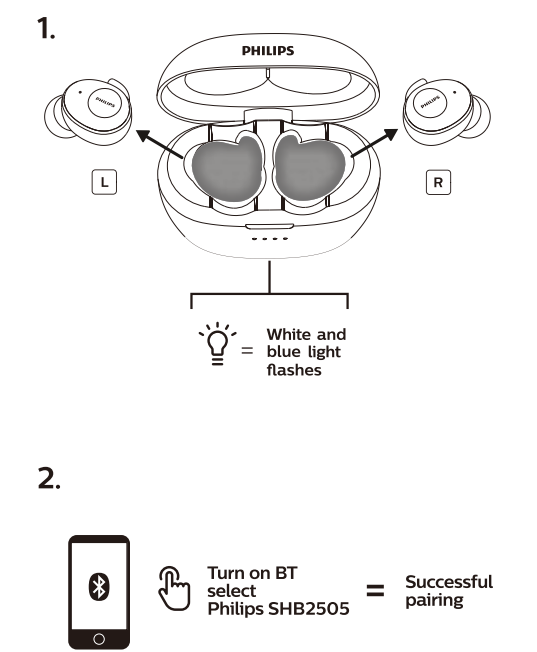


1. Charging



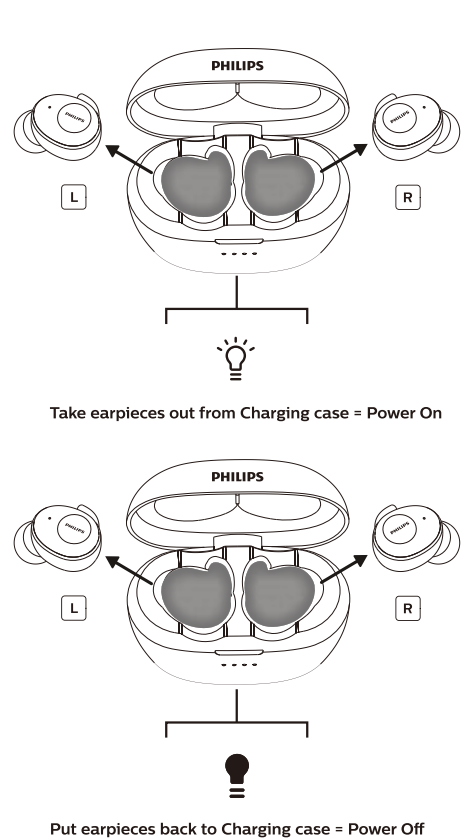
Warning: Only charge with certified USB adaptor DC 5V/1.0A

2. Power on and pairing

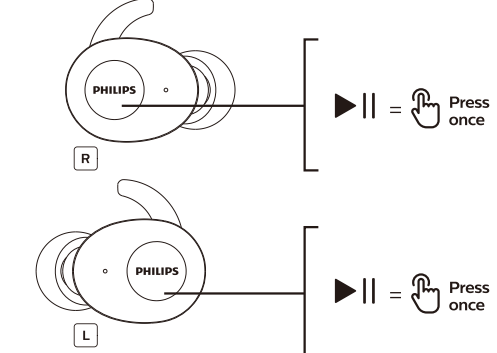


For more details, please refer to www.philips.com/welcome.

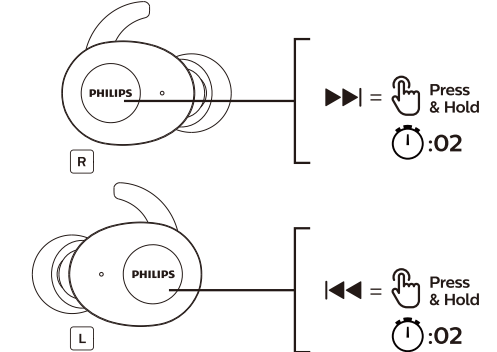
3. On/Off



4. Play/Pause



5. Track control



* Full user manual in all languages available on: www.philips.com/support