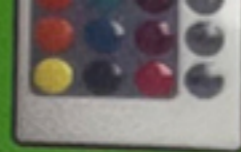


★ Remote controlled



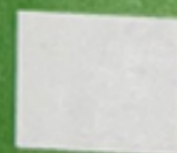
Bring your creations to life with illumination!

Our submersible lights can be used in or out of water. Illuminate flower vases, ice sculptures, table settings... Remote controlled submersible lights provide steady light and do not flash or flicker.

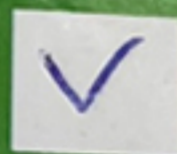
Instructions:

1. Open the light at the time of purchase to take out the batteries
2. Install the batteries correctly.
3. Close the light tightly
4. Put the light to the place where you want and press ON button to turn it on , and OFF button to turn it off. (For multi color light , press the color on the remote controller to change colors and modes)
5. If the container is black or very thick , please turn on the light and then put it into the container .Or to control if from the open part of the container.
6. The valid control distance is about 8 to 10 meters in the open area . So please use the remote controller within this distance . And point the controller to the upper part of the light for better receiving the IR .
7. Dispose of old batteries properly . To prevent conosion in items that use replaceable batteries ,remove batteries after each event.
8. The diameter is 2.76 inches ,the height is 1.38 inches.

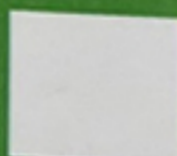
Cautions: Unit cannot be used in beverages. Unit is not intended for children under the age of 6. Avoid looking directly into the bulb when activated.



Single color



Multi color



10 LED light

Made in China



Always make the correct choice!