



**BTG-158**  
denver.eu

2022



FR

Cet appareil  
est recyclable

À DÉPOSER  
EN MAGASIN



À DÉPOSER  
EN DÉCHÈTERIE

OU



Points de collecte sur [www.quefairedemesdechets.fr](http://www.quefairedemesdechets.fr)  
Privilégiez la réparation ou le don de votre appareil !

## INSTRUCTION MANUAL

### Safety information

Please read the safety instructions carefully before using the product for the first time and keep the instructions for future reference

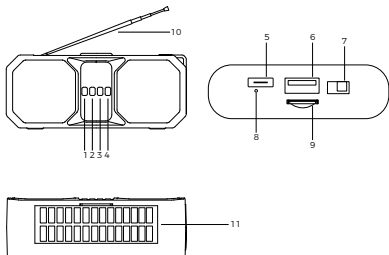
1. This product is not a toy. Keep it out of reach of children.
2. **Warning:** This product includes lithium-ion battery.
3. Keep product out of the reach of children and pets to avoid chewing and swallowing
4. Product operating and storage temperature is from 0 degree Celsius to 40 degrees Celsius. Under and over this temperature might affect the function.
5. Never open the product. Touching the inside electrics can cause electric shock. Repairs or service should only be performed by qualified personnel.
6. Do not expose to heat, water, dust (dusty environment), moisture, direct sunlight!
7. Please protect your ears against loud volume. Loud volume can damage your ears and can cause risk of hearing loss.
8. Bluetooth wireless technology operates within a range of about 10 m (30 feet).

The maximum communication distance may vary depending on the presence of obstacles (people, metal objects, walls, etc.) or the electromagnetic environment.

9. Microwaves emitting from a Bluetooth device may affect the operation of electronic medical devices.
10. The unit is not waterproof. If water or foreign objects enter the unit, it may result in fire or electric shock. If water or a foreign object enters the unit, stop use immediately.
11. Only charge with supplied USB cable.
12. Do not use non original accessories together with the product as this can make the product functionality abnormal.
13. Do not block the device's ventilation. Product should be able to disperse the heat.

**PLEASE READ ALL INSTRUCTIONS CAREFULLY AND RETAIN FOR FUTURE USE**

## DESCRIPTION OF PARTS AND RETAIN FOR FUTURE USE



1. Flashlight switch
2. Previous track/ Volume down
3. Next track/ Volume up
4. Mode/Play/Pause
5. Type-C charging port
6. USB thumb drive input/ USB output port (5V/500mAh max)
7. Power on/off
8. Charging indicator
9. TF card slot
10. FM pole (Can be used as a phone stand when it is adjusted to a suitable angle)
11. Solar panel

## **BTG-158 Wireless Bluetooth Speaker**

### **Package Contents:**

- Speaker
- Charging cable
- Instruction Manual
- Strap

### **TECHNICAL SPECIFICATIONS**

- Bluetooth Version: 5.0
- Bluetooth Range: 10 meters
- Battery: Built-in 1200 mAh Lithium
- Working Time: about 2-3 hours
- Type-C input charging time: about 1.5-2 hours
- Speaker Output Power: 8W (With one active speaker and one passive speaker)
- USB port and TF card slot for MP3 playback
- LED flashlight
- Solar charging
- USB output port (5V/500mAh max)

## **INSTRUCTIONS FOR USE**

### **How it works:**

1. Ensure the product is fully charged before first use.
2. Push the switch to the ON position to turn on the speaker.
- 3 Press and hold the "M" button to choose between Bluetooth mode/ USB drive music / TF card music/FM radio.
4. To pair with Bluetooth devices, go to Bluetooth settings on your phone, search for "BTG-158" and click Connect. Once connected you will hear a sound.
5. Press the M/Play/Pause button to play/pause the music.
6. Press the "+" or "-" to play the next / previous track.
7. Press and hold the "+" or "-" to increase / decrease the volume.

### **TWS CONNECTION**

TWS connection is only available when using two BTG-158 speakers.

After turning on speakers, double click the "+" button on both speakers to pair the two speakers for full stereo sound.

## **HANDLING PHONE CALL S**

1. Press the "M" button to answer / end a phone call.
2. Press and hold the "M" button for 2 seconds to reject a phone call.
3. Double click the "M" button to redial the last number.

## **CHARGING THE SPEAKER**

1. Connect one end of the supplied charging cable to the charging port and the other end to the charger.
2. Put the product under the sun, and make sure the solar charging panel is facing up. You can use the solar panel on the product to charge the battery.

## **BATTERY INFORMATION**

### **SPEAKER BATTERY**

**WARNING:** The device is equipped with an integrated lithium battery. The battery cannot be replaced.

Do not attempt to remove the battery from the device.

Please note all products are subject to change without any notice. We take reservations

for errors and omissions in the manual.

· ALL RIGHTS RESERVED, COPYRIGHT  
DENVER A/S



Denver.eu



Electric and electronic equipment and batteries is marked with the crossed out trash can symbol, seen above. This symbol signifies that electric and electronic equipment and batteries should not be disposed of with other household waste, but should be disposed of separately.

ENG7



As the end user it is important that you submit your used batteries to the appropriate and designated facility. In this manner you make sure that the batteries are recycled in accordance with legislature and will not harm the environment.

All cities have established collection points, where electric and electronic equipment and batteries can either be submitted free of charge at recycling stations and other collection sites, or be collected from the households. Additional information is available at the technical department of your city.

Hereby, DENVER A/S declares that the radio equipment type BTG-158 is in compliance with Directive 2014/53/EU. The full text of the EU declaration of conformity is available at the following internet address: [denver.eu](http://denver.eu) and then click the search ICON on topline of website. Write model number: BTG-158. Now enter product page, and RED directive is found under downloads/other downloads.  
Operating Frequency Range: 85-15KHZ  
Max Output Power: 8W  
Bluetooth Frequency: 2402 MHZ-2480 MHZ  
Warning: Lithium battery inside

**Denver A/S**  
Omega 5A, Soefte  
DK-8382 Hinnerup  
Denmark  
[facebook.com/denver.eu](https://www.facebook.com/denver.eu)

ENG9

## Nordics

### Headquarter

Denver A/S  
Omega 5A, Soeften  
DK-8382 Hinnerup  
Denmark

Phone: +45 86 22 61 00  
(Push "1" for support)

E-Mail  
For technical questions, please write to:  
[support.hq@denver.eu](mailto:support.hq@denver.eu)

For all other questions please write to:  
[contact.hq@denver.eu](mailto:contact.hq@denver.eu)

---

## Benelux

DENVER BENELUX B.V.  
Barwoutswaarder 13C+D  
3449 HE Woerden  
The Netherlands

Phone: 0900-3437623

E-Mail: [support.nl@denver.eu](mailto:support.nl@denver.eu)

---

## Spain/Portugal

DENVER SPAIN S.A  
Ronda Augustes y Louis Lumiere,  
nº 23 - nave 16  
Parque Tecnológico  
46980 PATERNA  
Valencia (Spain)

Spain  
Phone: +34 960 046 883  
Mail: [support.es@denver.eu](mailto:support.es@denver.eu)

Portugal:  
Phone: +35 1255 240 294  
E-Mail: [denver.service@satfiel.com](mailto:denver.service@satfiel.com)

## Germany

Denver Germany GmbH Service  
Max-Emanuel-Str. 4  
94036 Passau

Phone: +49 851 379 369 40

E-Mail  
[support.de@denver.eu](mailto:support.de@denver.eu)

Fairfixx GmbH  
Repair and service  
Rudolf-Diesel-Str. 3 TOR 2  
53859 Niederkassel

(for TV, E-Mobility/Hoverboards/Balanceboards,  
Smartphones & Tablets)

Tel.: +49 851 379 369 69  
E-Mail: [denver@fairfixx.de](mailto:denver@fairfixx.de)

---

## Austria

Lurf Premium Service GmbH  
Deutschstrasse 1  
1230 Wien

Phone: +43 1 904 3085  
E-Mail: [denver@lurfservice.at](mailto:denver@lurfservice.at)

---

If your country is not listed above,  
please write an email to  
[support@denver.eu](mailto:support@denver.eu)



DENVER A/S  
Omega 5A, Soeften  
DK-8382 Hinnerup  
Denmark

[denver.eu](http://denver.eu)  
[facebook.com/denver.eu](https://facebook.com/denver.eu)