

## APPLICATION FOR TEST REPORT

### On Behalf of

Prepared For : Shenzhen Rongwu Technology & Development Co., Ltd.  
Rm. A612, Blk. A, Baohua Bldg., Huaqiang N. Rd., Futian Dist.,  
Shenzhen

Product Name : walkie talkie

Model : BT388

Supplementary Model : /

Prepared By : Shenzhen POCE Technology Co., Ltd.  
H Building, Hongfa Science And Technology Park, Tangtou,  
Shiyan, Bao'An District, Shenzhen, China

Test Date : Mar. 11, 2021 – Mar. 26, 2021

Date of Report : Mar. 26, 2021

Report No. : POCE210325028PRS

Note: This test report is limited to the above client company and the product model only.  
It may not be duplicated without prior written consent of Shenzhen POCE Technology Co.,  
LTD.

<b>TEST REPORT</b> <b>EN 62368-1</b> <b>Audio/video, information and communication technology equipment</b> <b>Part 1: Safety requirements</b>	
<b>Report Number</b> ..... :	POCE210325028PRS
<b>Compiled by (name + signature) .. :</b>	Eva/ Project Engineer
<b>Approved by (name + signature) ... :</b>	Macheal Mo / Manager
<b>Date of issue</b> ..... :	Mar. 26, 2021
<b>Applicant's name</b> ..... :	Shenzhen Rongwu Technology & Development Co., Ltd.
<b>Address</b> ..... :	Rm. A612, Blk. A, Baohua Bldg., Huaqiang N. Rd., Futian Dist., Shenzhen
<b>Test specification:</b>	
<b>Standard</b> ..... :	IEC 62368-1:2014 (Second Edition); EN 62368-1:2014+A11:2017
<b>Test procedure</b> ..... :	LVD
<b>Non-standard test method</b> ..... :	N/A
<b>Test Report Form No</b> ..... :	IEC62368_1B
<b>Test Report Form(s) Originator</b> ..... :	UL(US)
<b>Master TRF</b> ..... :	2014-03
<b>Test Item description</b> ..... :	walkie talkie
<b>Trade Mark</b> ..... :	/
<b>Manufacturer</b> ..... :	Shenzhen Rongwu Technology & Development Co., Ltd.
<b>Address</b> ..... :	Rm. A612, Blk. A, Baohua Bldg., Huaqiang N. Rd., Futian Dist., Shenzhen
<b>Model</b> ..... :	BT388
<b>Supplementary Model</b> ..... :	/
<b>Rating</b> ..... :	Input: 6V $\overline{=}$ (Use 4 AAA batteries)



**List of Attachments (including a total number of pages in each attachment):**

- Pages 45 to 48 for European group differences and national differences of EN 62368-1:2014+A11:2017;
- Pages 49 to 52 for Pictures .

**Summary of testing:**

Unless otherwise indicated, all tests were conducted at Shenzhen POCE Technology Co., Ltd.  
H Building, Hongfa Science And Technology Park, Tangtou, Shiyan, Bao'An District, Shenzhen, China

**Summary of compliance with National Differences:****List of countries addressed:**

Group differences and national differences for CENELEC countries were checked.

**The product fulfils the requirements of IEC 62368-1:2014 (Second Edition)**

**Copy of marking plate:**

The artwork below may be only a draft. The use of certification marks on a product must be authorized by the respective NCBs that own these marks.

walkie talkie

Model No.: BT388

Input:6V $\text{---}$  (Use 4 AAA batteries)



Shenzhen Rongwu Technology & Development Co., Ltd.  
Made in China

<b>TEST ITEM PARTICULARS:</b>	
Classification of use by.....:	<input checked="" type="checkbox"/> Ordinary person <input type="checkbox"/> Instructed person <input type="checkbox"/> Skilled person <input checked="" type="checkbox"/> Children likely to be present
Supply Connection.....:	<input type="checkbox"/> AC Mains <input type="checkbox"/> DC Mains <input checked="" type="checkbox"/> External Circuit - not Mains connected - <input checked="" type="checkbox"/> ES1 <input type="checkbox"/> ES2 <input type="checkbox"/> ES3
Supply % Tolerance .....	<input type="checkbox"/> +10%/-10% <input type="checkbox"/> +20%/-15% <input type="checkbox"/> + ____ %/ - ____ % <input checked="" type="checkbox"/> None
Supply Connection – Type .....	<input type="checkbox"/> pluggable equipment type A - <input type="checkbox"/> non-detachable supply cord <input type="checkbox"/> appliance coupler <input type="checkbox"/> direct plug-in <input type="checkbox"/> mating connector <input type="checkbox"/> pluggable equipment type B - <input type="checkbox"/> non-detachable supply cord <input type="checkbox"/> appliance coupler <input type="checkbox"/> permanent connection <input type="checkbox"/> mating connector <input checked="" type="checkbox"/> other: _not Mains connected _____
Considered current rating of protective device as part of building or equipment installation.....:	N/A; Installation location: <input type="checkbox"/> building; <input type="checkbox"/> equipment
Equipment mobility.....:	<input type="checkbox"/> movable <input type="checkbox"/> hand-held <input checked="" type="checkbox"/> transportable <input type="checkbox"/> stationary <input type="checkbox"/> for building-in <input type="checkbox"/> direct plug-in <input type="checkbox"/> rack-mounting <input type="checkbox"/> wall-mounted
Over voltage category (OVC) .....	<input type="checkbox"/> OVC I <input type="checkbox"/> OVC II <input type="checkbox"/> OVC III <input type="checkbox"/> OVC IV <input checked="" type="checkbox"/> other: _DC battery_____
Class of equipment .....	<input type="checkbox"/> Class I <input type="checkbox"/> Class II <input checked="" type="checkbox"/> Class III
Access location .....	<input type="checkbox"/> restricted access location <input checked="" type="checkbox"/> N/A
Pollution degree (PD) .....	<input type="checkbox"/> PD 1 <input checked="" type="checkbox"/> PD 2 <input type="checkbox"/> PD 3
Manufacturer's specified maximum operating ambient..:	40°C
IP protection class .....	<input checked="" type="checkbox"/> IPX0 <input type="checkbox"/> IP _____
Power Systems .....	<input checked="" type="checkbox"/> TN <input type="checkbox"/> TT <input type="checkbox"/> IT - ____ V <sub>L-L</sub>
Altitude during operation (m) .....	<input checked="" type="checkbox"/> 2000 m or less <input type="checkbox"/> ____ m
Altitude of test laboratory (m) .....	<input checked="" type="checkbox"/> 2000 m or less <input type="checkbox"/> ____ m
Mass of equipment (kg) .....	<input checked="" type="checkbox"/> <7kg
<b>POSSIBLE TEST CASE VERDICTS:</b>	
- test case does not apply to the test object.....:	N/A
- test object does meet the requirement.....:	P (Pass)
- test object does not meet the requirement.....:	F (Fail)

<b>TESTING:</b>	
Date of receipt of test item.....	Mar. 11, 2021
Date (s) of performance of tests.....	Mar. 11, 2021 – Mar. 26, 2021
<b>GENERAL REMARKS:</b>	
<p>"(See Enclosure #)" refers to additional information appended to the report.  "(See appended table)" refers to a table appended to the report.</p> <p>Throughout this report a <input type="checkbox"/> comma / <input checked="" type="checkbox"/> point is used as the decimal separator.</p>	
<b>Manufacturer's Declaration per sub-clause 4.2.5 of IEC60950-1:</b>	
The application for obtaining a CB Test Certificate includes more than one factory location and a declaration from the Manufacturer stating that the sample(s) submitted for evaluation is (are) representative of the products from each factory has been provided.....	<input type="checkbox"/> Yes <input checked="" type="checkbox"/> Not applicable
<b>When differences exist; they shall be identified in the General product information section.</b>	
<b>Name and address of factory (ies).....</b>	Shenzhen Rongwu Technology & Development Co., Ltd. Rm. A612, Blk. A, Baohua Bldg., Huaqiang N. Rd., Futian Dist., Shenzhen
<b>GENERAL PRODUCT INFORMATION:</b>	
<b>Product Description:</b>	
1. The unit covered in this report is a walkie talkie .	
<b>Model Differences:</b>	
<b>Additional application considerations – (Considerations used to test a component or sub-assembly) –</b>	
N/A	

**ENERGY SOURCE IDENTIFICATION AND CLASSIFICATION TABLE:**

(Note 1: Identify the following six (6) energy source forms based on the origin of the energy.)  
 (Note 2: The identified classification e.g., ES2, TS1, should be with respect to its ability to cause pain or injury on the body or its ability to ignite a combustible material. Any energy source can be declared Class 3 as a worse case classification e.g. PS3, ES3.)

**Electrically-caused injury (Clause 5):**

(Note: Identify type of source, list sub-assembly or circuit designation and corresponding energy source classification)

Example: +5 V dc input

ES1

**Source of electrical energy****Corresponding classification (ES)**

All circuits inside the equipment enclosure

ES1

**Electrically-caused fire (Clause 6):**

(Note: List sub-assembly or circuit designation and corresponding energy source classification)

Example: Battery pack (maximum 85 watts):

PS2

**Source of power or PIS****Corresponding classification (PS)**

Input

PS1

**Injury caused by hazardous substances (Clause 7)**

(Note: Specify hazardous chemicals, whether produces ozone or other chemical construction not addressed as part of the component evaluation.)

Example: Liquid in filled component

Glycol

**Source of hazardous substances****Corresponding chemical**

N/A

N/A

**Mechanically-caused injury (Clause 8)**

(Note: List moving part(s), fan, special installations, etc. & corresponding MS classification based on Table 35.)

Example: Wall mount unit

MS2

**Source of kinetic/mechanical energy****Corresponding classification (MS)**

Sharp edges and corners

MS1

Equipment mass

MS1

**Thermal burn injury (Clause 9)**

(Note: Identify the surface or support, and corresponding energy source classification based on type of part, location, operating temperature and contact time in Table 38.)

Example: Hand-held scanner – thermoplastic enclosure

TS1

**Source of thermal energy****Corresponding classification (TS)**

Accessible surfaces

TS1

**Radiation (Clause 10)**

(Note: List the types of radiation present in the product and the corresponding energy source classification.)

Example: DVD – Class 1 Laser Product

RS1

**Type of radiation****Corresponding classification (RS)**

LED indicator

RS1

**ENERGY SOURCE DIAGRAM**

Indicate which energy sources are included in the energy source diagram. Insert diagram below

ES     PS     MS     TS     RS

<b>OVERVIEW OF EMPLOYED SAFEGUARDS</b>				
<b>Clause</b>	<b>Possible Hazard</b>			
5.1	Electrically-caused injury			
Body Part (e.g. Ordinary)	Energy Source (ES3: Primary Filter circuit)	Safeguards		
		Basic	Supplementary	Reinforced (Enclosure)
Ordinary	ES1: All circuits inside the equipment enclosure	N/A	N/A	N/A
6.1	Electrically-caused fire			
Material part (e.g. enclosure)	Energy Source (PS2: 100 Watt circuit)	Safeguards		
		Basic	Supplementary	Reinforced
Combustible materials	PS1: <15W	No parts exceeding 90% of its spontaneous ignition temperature	N/A	N/A
7.1	Injury caused by hazardous substances			
Body Part (e.g., skilled)	Energy Source (hazardous material)	Safeguards		
		Basic	Supplementary	Reinforced
N/A	N/A	N/A	N/A	N/A
8.1	Mechanically-caused injury			
Body Part (e.g. Ordinary)	Energy Source (MS3:High Pressure Lamp)	Safeguards		
		Basic	Supplementary	Reinforced (Enclosure)
Ordinary	MS1: Sharp edges and corners	N/A	N/A	N/A
Ordinary	MS1: Equipment mass	N/A	N/A	N/A
9.1	Thermal Burn			
Body Part (e.g., Ordinary)	Energy Source (TS2)	Safeguards		
		Basic	Supplementary	Reinforced
Ordinary	TS1: Accessible surfaces	N/A	N/A	N/A
10.1	Radiation			
Body Part (e.g., Ordinary)	Energy Source (Output from audio port)	Safeguards		
		Basic	Supplementary	Reinforced
Average person	LED	N/A	N/A	N/A
Supplementary Information:				
(1) See attached energy source diagram for additional details.				
(2) "N" – Normal Condition; "A" – Abnormal Condition; "S" Single Fault				



EN 62368-1			
Clause	Requirement + Test	Result - Remark	Verdict
<b>4</b>	<b>GENERAL REQUIREMENTS</b>		P
4.1.1	Acceptance of materials, components and subassemblies		P
4.1.2	Use of components		P
4.1.3	Equipment design and construction		P
4.1.15	Markings and instructions..... :	(See Annex F)	P
4.4.4	Safeguard robustness		P
4.4.4.2	Steady force tests..... :	(See Annex T.4)	P
4.4.4.3	Drop tests..... :	(See Annex T.7)	P
4.4.4.4	Impact tests..... :	Transportable equipment	N/A
4.4.4.5	Internal accessible safeguard enclosure and barrier tests..... :		N/A
4.4.4.6	Glass Impact tests..... :	No glass used	N/A
4.4.4.7	Thermoplastic material tests..... :	(See Annex T.8)	P
4.4.4.8	Air comprising a safeguard..... :	No such safeguard used	N/A
4.4.4.9	Accessibility and safeguard effectiveness		P
4.5	Explosion		P
4.6	Fixing of conductors		N/A
4.6.1	Fix conductors not to defeat a safeguard		N/A
4.6.2	10 N force test applied to ..... :		N/A
4.7	Equipment for direct insertion into mains socket - outlets	Not such equipment	N/A
4.7.2	Mains plug part complies with the relevant standard..... :		N/A
4.7.3	Torque (Nm)..... :		N/A
4.8	Products containing coin/button cell batteries		P
4.8.2	Instructional safeguard		P
4.8.3	Battery Compartment Construction		N/A
	Means to reduce the possibility of children removing the battery..... :	Internal not to be removed	—
4.8.4	Battery Compartment Mechanical Tests..... :		N/A
4.8.5	Battery Accessibility		P
4.9	Likelihood of fire or shock due to entry of conductive object..... :		N/A
<b>5</b>	<b>ELECTRICALLY-CAUSED INJURY</b>		P
5.2.1	Electrical energy source classifications..... :	only ES1 existed	P
5.2.2	ES1, ES2 and ES3 limits		P
5.2.2.2	Steady-state voltage and current..... :		N/A

EN 62368-1			
Clause	Requirement + Test	Result - Remark	Verdict
5.2.2.3	Capacitance limits..... :		N/A
5.2.2.4	Single pulse limits..... :		N/A
5.2.2.5	Limits for repetitive pulses..... :		N/A
5.2.2.6	Ringing signals ..... :		N/A
5.2.2.7	Audio signals ..... :		N/A
5.3	Protection against electrical energy sources		N/A
5.3.1	General Requirements for accessible parts to ordinary, instructed and skilled persons		N/A
5.3.2.1	Accessibility to electrical energy sources and safeguards		N/A
5.3.2.2	Contact requirements		N/A
	a) Test with test probe from Annex V..... :		N/A
	b) Electric strength test potential (V)..... :		N/A
	c) Air gap (mm) ..... :		N/A
5.3.2.4	Terminals for connecting stripped wire		N/A
5.4	Insulation materials and requirements		N/A
5.4.1.2	Properties of insulating material		N/A
5.4.1.3	Humidity conditioning..... :		N/A
5.4.1.4	Maximum operating temperature for insulating materials ..... :		N/A
5.4.1.5	Pollution degree..... :		—
5.4.1.5.2	Test for pollution degree 1 environment and for an insulating compound		N/A
5.4.1.5.3	Thermal cycling		N/A
5.4.1.6	Insulation in transformers with varying dimensions		N/A
5.4.1.7	Insulation in circuits generating starting pulses		N/A
5.4.1.8	Determination of working voltage		N/A
5.4.1.9	Insulating surfaces		N/A
5.4.1.10	Thermoplastic parts on which conductive metallic parts are directly mounted		N/A
5.4.1.10.2	Vicat softening temperature..... :		N/A
5.4.1.10.3	Ball pressure ..... :		N/A
5.4.2	Clearances		N/A
5.4.2.2	Determining clearance using peak working voltage		N/A
5.4.2.3	Determining clearance using required withstand voltage ..... :		N/A
	a) a.c. mains transient voltage..... :		—
	b) d.c. mains transient voltage ..... :		—
	c) external circuit transient voltage..... :		—

## EN 62368-1

Clause	Requirement + Test	Result - Remark	Verdict
	d) transient voltage determined by measurement ..... :		—
5.4.2.4	Determining the adequacy of a clearance using an electric strength test		N/A
5.4.2.5	Multiplication factors for clearances and test voltages..... :		N/A
5.4.3	Creepage distances..... :		N/A
5.4.3.1	General		N/A
5.4.3.3	Material Group ..... :		—
5.4.4	Solid insulation		N/A
5.4.4.2	Minimum distance through insulation ..... :		N/A
5.4.4.3	Insulation compound forming solid insulation		N/A
5.4.4.4	Solid insulation in semiconductor devices		N/A
5.4.4.5	Cemented joints		N/A
5.4.4.6	Thin sheet material		N/A
5.4.4.6.1	General requirements		N/A
5.4.4.6.2	Separable thin sheet material		N/A
	Number of layers (pcs) ..... :		N/A
5.4.4.6.3	Non-separable thin sheet material		N/A
5.4.4.6.4	Standard test procedure for non-separable thin sheet material..... :		N/A
5.4.4.6.5	Mandrel test		N/A
5.4.4.7	Solid insulation in wound components		N/A
5.4.4.9	Solid insulation at frequencies >30 kHz..... :		N/A
5.4.5	Antenna terminal insulation		N/A
5.4.5.1	General		N/A
5.4.5.2	Voltage surge test		N/A
	Insulation resistance (MΩ)..... :		—
5.4.6	Insulation of internal wire as part of supplementary safeguard..... :		N/A
5.4.7	Tests for semiconductor components and for cemented joints		N/A
5.4.8	Humidity conditioning		N/A
	Relative humidity (%)..... :		—
	Temperature (°C) ..... :		—
	Duration (h) ..... :		—
5.4.9	Electric strength test..... :		N/A
5.4.9.1	Test procedure for a solid insulation type test		N/A
5.4.9.2	Test procedure for routine tests		N/A

EN 62368-1			
Clause	Requirement + Test	Result - Remark	Verdict
5.4.10	Protection against transient voltages between external circuit		N/A
5.4.10.1	Parts and circuits separated from external circuits		N/A
5.4.10.2	Test methods		N/A
5.4.10.2.1	General		N/A
5.4.10.2.2	Impulse test..... :		N/A
5.4.10.2.3	Steady-state test..... :		N/A
5.4.11	Insulation between external circuits and earthed circuitry..... :		N/A
5.4.11.1	Exceptions to separation between external circuits and earth		N/A
5.4.11.2	Requirements		N/A
	Rated operating voltage $U_{op}$ (V)..... :		—
	Nominal voltage $U_{peak}$ (V)..... :		—
	Max increase due to variation $U_{sp}$ ..... :		—
	Max increase due to ageing $\Delta U_{sa}$ ..... :		—
	$U_{op} = U_{peak} + \Delta U_{sp} + \Delta U_{sa}$ ..... :		—
5.5	Components as safeguards		
5.5.1	General		N/A
5.5.2	Capacitors and RC units		N/A
5.5.2.1	General requirement		N/A
5.5.2.2	Safeguards against capacitor discharge after disconnection of a connector..... :		N/A
5.5.3	Transformers		N/A
5.5.4	Optocouplers		N/A
5.5.5	Relays		N/A
5.5.6	Resistors		N/A
5.5.7	SPD's		N/A
5.5.7.1	Use of an SPD connected to reliable earthing		N/A
5.5.7.2	Use of an SPD between mains and protective earth		N/A
5.5.8	Insulation between the mains and external circuit consisting of a coaxial cable..... :		N/A
5.6	Protective conductor		N/A
5.6.2	Requirement for protective conductors		N/A
5.6.2.1	General requirements		N/A
5.6.2.2	Colour of insulation		N/A
5.6.3	Requirement for protective earthing conductors		N/A
	Protective earthing conductor size (mm <sup>2</sup> ) ..... :		—

EN 62368-1			
Clause	Requirement + Test	Result - Remark	Verdict
5.6.4	Requirement for protective bonding conductors		N/A
5.6.4.1	Protective bonding conductors		N/A
	Protective bonding conductor size (mm <sup>2</sup> )..... :		—
	Protective current rating (A) ..... :		—
5.6.4.3	Current limiting and overcurrent protective devices		N/A
5.6.5	Terminals for protective conductors		N/A
5.6.5.1	Requirement		N/A
	Conductor size (mm <sup>2</sup> ), nominal thread diameter (mm)..... :		N/A
5.6.5.2	Corrosion		N/A
5.6.6	Resistance of the protective system		N/A
5.6.6.1	Requirements		N/A
5.6.6.2	Test Method Resistance ( $\Omega$ )..... :		N/A
5.6.7	Reliable earthing		N/A
5.7	Prospective touch voltage, touch current and protective conductor current		N/A
5.7.2	Measuring devices and networks		N/A
5.7.2.1	Measurement of touch current..... :		N/A
5.7.2.2	Measurement of prospective touch voltage		N/A
5.7.3	Equipment set-up, supply connections and earth connections		N/A
	System of interconnected equipment (separate connections/single connection)..... :		—
	Multiple connections to mains (one connection at a time/simultaneous connections)..... :		—
5.7.4	Earthed conductive accessible parts..... :		N/A
5.7.5	Protective conductor current		N/A
	Supply Voltage (V)..... :		—
	Measured current (mA)..... :		—
	Instructional Safeguard..... :		N/A
5.7.6	Prospective touch voltage and touch current due to external circuits		N/A
5.7.6.1	Touch current from coaxial cables		N/A
5.7.6.2	Prospective touch voltage and touch current from external circuits		N/A
5.7.7	Summation of touch currents from external circuits		N/A
	a) Equipment with earthed external circuits Measured current (mA)..... :		N/A
	b) Equipment whose external circuits are not referenced to earth. Measured current (mA)..... :		N/A

## EN 62368-1

Clause	Requirement + Test	Result - Remark	Verdict
<b>6</b>	<b>ELECTRICALLY- CAUSED FIRE</b>		P
6.2	Classification of power sources (PS) and potential ignition sources (PIS)		P
6.2.2	Power source circuit classifications		P
6.2.2.1	General		P
6.2.2.2	Power measurement for worst-case load fault.... :		P
6.2.2.3	Power measurement for worst-case power source fault.....:		P
6.2.2.4	PS1 .....		P
6.2.2.5	PS2 .....		N/A
6.2.2.6	PS3 .....		N/A
6.2.3	Classification of potential ignition sources		N/A
6.2.3.1	Arcing PIS .....	No arcing PIS exists	N/A
6.2.3.2	Resistive PIS .....	No identification of resistive PIS required due to providing fire enclosure and it complied with requirements of sub-clause 6.4.8	N/A
6.3	Safeguards against fire under normal operating and abnormal operating conditions		P
6.3.1 (a)	No ignition and attainable temperature value less than 90 % defined by ISO 871 or less than 300 °C for unknown materials.....:		N/A
6.3.1 (b)	Combustible materials outside fire enclosure		N/A
6.4	Safeguards against fire under single fault conditions		P
6.4.1	Safeguard Method	Control of fire spread	P
6.4.2	Reduction of the likelihood of ignition under single fault conditions in PS1 circuits		P
6.4.3	Reduction of the likelihood of ignition under single fault conditions in PS2 and PS3 circuits		N/A
6.4.3.1	General		N/A
6.4.3.2	Supplementary Safeguards		N/A
	Special conditions if conductors on printed boards are opened or peeled		N/A
6.4.3.3	Single Fault Conditions.....:		N/A
	Special conditions for temperature limited by fuse		N/A
6.4.4	Control of fire spread in PS1 circuits		P
6.4.5	Control of fire spread in PS2 circuits		N/A
6.4.5.2	Supplementary safeguards .....		N/A
6.4.6	Control of fire spread in PS3 circuit	No PS3 exist	N/A
6.4.7	Separation of combustible materials from a PIS	Fire enclosure used	N/A
6.4.7.1	General.....:		N/A

EN 62368-1			
Clause	Requirement + Test	Result - Remark	Verdict
6.4.7.2	Separation by distance		N/A
6.4.7.3	Separation by a fire barrier		N/A
6.4.8	Fire enclosures and fire barriers		N/A
6.4.8.1	Fire enclosure and fire barrier material properties		N/A
6.4.8.2.1	Requirements for a fire barrier		N/A
6.4.8.2.2	Requirements for a fire enclosure		N/A
6.4.8.3	Constructional requirements for a fire enclosure and a fire barrier		N/A
6.4.8.3.1	Fire enclosure and fire barrier openings		N/A
6.4.8.3.2	Fire barrier dimensions		N/A
6.4.8.3.3	Top Openings in Fire Enclosure: dimensions (mm) .....		N/A
	Needle Flame test		N/A
6.4.8.3.4	Bottom Openings in Fire Enclosure, condition met a), b) and/or c) dimensions (mm) .....	No openings	N/A
	Flammability tests for the bottom of a fire enclosure .....		N/A
6.4.8.3.5	Integrity of the fire enclosure, condition met: a), b) or c).....		N/A
6.4.8.4	Separation of PIS from fire enclosure and fire barrier distance (mm) or flammability rating.....		N/A
6.5	Internal and external wiring		P
6.5.1	Requirements	Suitable for type and size	P
6.5.2	Cross-sectional area (mm <sup>2</sup> ) .....		—
6.5.3	Requirements for interconnection to building wiring.....		N/A
6.6	Safeguards against fire due to connection to additional equipment		N/A
	External port limited to PS2 or complies with Clause Q.1		N/A

<b>7</b>	<b>INJURY CAUSED BY HAZARDOUS SUBSTANCES</b>		N/A
7.2	Reduction of exposure to hazardous substances		N/A
7.3	Ozone exposure	No ozone produced.	N/A
7.4	Use of personal safeguards (PPE)		N/A
	Personal safeguards and instructions.....		—
7.5	Use of instructional safeguards and instructions		N/A
	Instructional safeguard (ISO 7010).....		—
7.6	Batteries.....		N/A

EN 62368-1			
Clause	Requirement + Test	Result - Remark	Verdict
<b>8</b>	<b>MECHANICALLY-CAUSED INJURY</b>		P
8.1	General	Enclosure is smooth and no mechanical energy sources	P
8.2	Mechanical energy source classifications	MS1	P
8.3	Safeguards against mechanical energy sources	No additional safeguards is needed to against mechanical energy sources	N/A
8.4	Safeguards against parts with sharp edges and corners	No sharp edges and corners.	P
8.4.1	Safeguards		N/A
8.5	Safeguards against moving parts	No moving parts within EUT	N/A
8.5.1	MS2 or MS3 part required to be accessible for the function of the equipment		N/A
8.5.2	Instructional Safeguard..... :		—
8.5.4	Special categories of equipment comprising moving parts		N/A
8.5.4.1	Large data storage equipment		N/A
8.5.4.2	Equipment having electromechanical device for destruction of media		N/A
8.5.4.2.1	Safeguards and Safety Interlocks..... :		N/A
8.5.4.2.2	Instructional safeguards against moving parts		N/A
	Instructional Safeguard..... :		—
8.5.4.2.3	Disconnection from the supply		N/A
8.5.4.2.4	Probe type and force (N)..... :		N/A
8.5.5	High Pressure Lamps		N/A
8.5.5.1	Energy Source Classification		N/A
8.5.5.2	High Pressure Lamp Explosion Test..... :		N/A
8.6	Stability	No stability requirements for MS1	N/A
8.6.1	Product classification		N/A
	Instructional Safeguard..... :		—
8.6.2	Static stability		N/A
8.6.2.2	Static stability test		N/A
	Applied Force..... :		—
8.6.2.3	Downward Force Test		N/A
8.6.3	Relocation stability test		N/A
	Unit configuration during 10° tilt..... :		—
8.6.4	Glass slide test		N/A
8.6.5	Horizontal force test (Applied Force)..... :		N/A
	Position of feet or movable parts..... :		—



## EN 62368-1

Clause	Requirement + Test	Result - Remark	Verdict
8.7	Equipment mounted to wall or ceiling		N/A
8.7.1	Mounting Means (Length of screws (mm) and mounting surface) .....		N/A
8.7.2	Direction and applied force.....		N/A
8.8	Handles strength	No handle	N/A
8.8.1	Classification		N/A
8.8.2	Applied Force .....		N/A
8.9	Wheels or casters attachment requirements	No wheels within EUT	N/A
8.9.1	Classification		N/A
8.9.2	Applied force.....		—
8.10	Carts, stands and similar carriers	Not such devices	N/A
8.10.1	General		N/A
8.10.2	Marking and instructions		N/A
	Instructional Safeguard.....		—
8.10.3	Cart, stand or carrier loading test and compliance		N/A
	Applied force.....		—
8.10.4	Cart, stand or carrier impact test		N/A
8.10.5	Mechanical stability		N/A
	Applied horizontal force (N).....		—
8.10.6	Thermoplastic temperature stability (°C).....		N/A
8.11	Mounting means for rack mounted equipment	Not such apparatus	N/A
8.11.1	General		N/A
8.11.2	Product Classification		N/A
8.11.3	Mechanical strength test, variable <i>N</i> .....		N/A
8.11.4	Mechanical strength test 250N, including end stops		N/A
8.12	Telescoping or rod antennas.....	No antennas	N/A
	Button/Ball diameter (mm).....		—

<b>9</b>	<b>THERMAL BURN INJURY</b>		<b>P</b>
9.2	Thermal energy source classifications	All accessible surfaces are classified as TS1.	P
9.3	Safeguard against thermal energy sources	No safeguards are required between TS1 and ordinary person	N/A
9.4	Requirements for safeguards		N/A
9.4.1	Equipment safeguard	Not required due to TS1	N/A
9.4.2	Instructional safeguard .....		N/A

## EN 62368-1

Clause	Requirement + Test	Result - Remark	Verdict
<b>10</b>	<b>RADIATION</b>		P
10.2	Radiation energy source classification		P
10.2.1	General classification		P
10.3	Protection against laser radiation		N/A
	Laser radiation that exists equipment:		—
	Normal, abnormal, single-fault..... :		N/A
	Instructional safeguard..... :		—
	Tool..... :		—
10.4	Protection against visible, infrared, and UV radiation		N/A
10.4.1	General		N/A
10.4.1.a)	RS3 for Ordinary and instructed persons..... :		N/A
10.4.1.b)	RS3 accessible to a skilled person..... :		N/A
	Personal safeguard (PPE) instructional safeguard..... :		—
10.4.1.c)	Equipment visible, IR, UV does not exceed RS1.. :		N/A
10.4.1.d)	Normal, abnormal, single-fault conditions ..... :		N/A
10.4.1.e)	Enclosure material employed as safeguard is opaque..... :		N/A
10.4.1.f)	UV attenuation..... :		N/A
10.4.1.g)	Materials resistant to degradation UV..... :		N/A
10.4.1.h)	Enclosure containment of optical radiation..... :		N/A
10.4.1.i)	Exempt Group under normal operating conditions..... :		N/A
10.4.2	Instructional safeguard..... :		N/A
10.5	Protection against x-radiation		N/A
10.5.1	X- radiation energy source that exists equipment :		N/A
	Normal, abnormal, single fault conditions		N/A
	Equipment safeguards..... :		N/A
	Instructional safeguard for skilled person..... :		N/A
10.5.3	Most unfavourable supply voltage to give maximum radiation..... :		—
	Abnormal and single-fault condition..... :		N/A
	Maximum radiation (pA/kg)..... :		N/A
10.6	Protection against acoustic energy sources		N/A
10.6.1	General		N/A
10.6.2	Classification		N/A
	Acoustic output, dB(A)..... :		N/A
	Output voltage, unweighted r.m.s..... :		N/A

## EN 62368-1

Clause	Requirement + Test	Result - Remark	Verdict
10.6.4	Protection of persons		N/A
	Instructional safeguards..... :		N/A
	Equipment safeguard prevent ordinary person to RS2..... :		—
	Means to actively inform user of increase sound pressure..... :		—
	Equipment safeguard prevent ordinary person to RS2..... :		—
10.6.5	Requirements for listening devices (headphones, earphones, etc.)		N/A
10.6.5.1	Corded passive listening devices with analog input		N/A
	Input voltage with 94 dB(A) $L_{Aeq}$ acoustic pressure output..... :		—
10.6.5.2	Corded listening devices with digital input		N/A
	Maximum dB(A)..... :		—
10.6.5.3	Cordless listening device		N/A
	Maximum dB(A)..... :		—

<b>B</b>	<b>NORMAL OPERATING CONDITION TESTS, ABNORMAL OPERATING CONDITION TESTS AND SINGLE FAULT CONDITION TESTS</b>		P
B.2	Normal Operating Conditions		P
B.2.1	General requirements..... :	(See Test Item Particulars and appended test tables)	P
	Audio Amplifiers and equipment with audio amplifiers..... :		N/A
B.2.3	Supply voltage and tolerances	See marking	P
B.2.5	Input test..... :	(See appended table B.2.5)	P
B.3	Simulated abnormal operating conditions		P
B.3.1	General requirements..... :	(See appended table B.3)	P
B.3.2	Covering of ventilation openings	No openings within the EUT	N/A
B.3.3	D.C. mains polarity test		N/A
B.3.4	Setting of voltage selector..... :	No such selector	N/A
B.3.5	Maximum load at output terminals..... :	No such terminals used	N/A
B.3.6	Reverse battery polarity		N/A
B.3.7	Abnormal operating conditions as specified in Clause E.2.		N/A
B.3.8	Safeguards functional during and after abnormal operating conditions		N/A
B.4	Simulated single fault conditions		P

EN 62368-1			
Clause	Requirement + Test	Result - Remark	Verdict
B.4.2	Temperature controlling device open or short-circuited..... :	No such controlling device	N/A
B.4.3	Motor tests	No motor used	N/A
B.4.3.1	Motor blocked or rotor locked increasing the internal ambient temperature ..... :		N/A
B.4.4	Short circuit of functional insulation		N/A
B.4.4.1	Short circuit of clearances for functional insulation		N/A
B.4.4.2	Short circuit of creepage distances for functional insulation		N/A
B.4.4.3	Short circuit of functional insulation on coated printed boards		N/A
B.4.5	Short circuit and interruption of electrodes in tubes and semiconductors		N/A
B.4.6	Short circuit or disconnect of passive components		N/A
B.4.7	Continuous operation of components		N/A
B.4.8	Class 1 and Class 2 energy sources within limits during and after single fault conditions		P
B.4.9	Battery charging under single fault conditions..... :		P
<b>C</b>	<b>UV RADIATION</b>		N/A
C.1	Protection of materials in equipment from UV radiation	General indoor used equipment only	N/A
C.1.2	Requirements		N/A
C.1.3	Test method		N/A
C.2	UV light conditioning test		N/A
C.2.1	Test apparatus		N/A
C.2.2	Mounting of test samples		N/A
C.2.3	Carbon-arc light-exposure apparatus		N/A
C.2.4	Xenon-arc light exposure apparatus		N/A
<b>D</b>	<b>TEST GENERATORS</b>		N/A
D.1	Impulse test generators	Not such apparatus	N/A
D.2	Antenna interface test generator		N/A
D.3	Electronic pulse generator		N/A
<b>E</b>	<b>TEST CONDITIONS FOR EQUIPMENT CONTAINING AUDIO AMPLIFIERS</b>		P
E.1	Audio amplifier normal operating conditions		N/A
	Audio signal voltage (V)..... :	ES1	—
	Rated load impedance ( $\Omega$ ) ..... :	8 $\Omega$	—
E.2	Audio amplifier abnormal operating conditions		P
<b>F</b>	<b>EQUIPMENT MARKINGS, INSTRUCTIONS, AND INSTRUCTIONAL SAFEGUARDS</b>		P
F.1	General requirements		P
	Instructions – Language ..... :	English	—

## EN 62368-1

Clause	Requirement + Test	Result - Remark	Verdict
F.2	Letter symbols and graphical symbols		P
F.2.1	Letter symbols according to IEC60027-1		P
F.2.2	Graphic symbols IEC, ISO or manufacturer specific		P
F.3	Equipment markings		P
F.3.1	Equipment marking locations	On the rear enclosure	P
F.3.2	Equipment identification markings		P
F.3.2.1	Manufacturer identification .....	See page 3 for details	—
F.3.2.2	Model identification .....	See page 3 for details	—
F.3.3	Equipment rating markings	See page 3 for details	P
F.3.3.1	Equipment with direct connection to mains		N/A
F.3.3.2	Equipment without direct connection to mains		P
F.3.3.3	Nature of supply voltage.....	See page 3 for details	—
F.3.3.4	Rated voltage.....	See page 3 for details	—
F.3.3.4	Rated frequency.....		—
F.3.3.6	Rated current or rated power.....	See page 3 for details	—
F.3.3.7	Equipment with multiple supply connections	No multiple supply connection	N/A
F.3.4	Voltage setting device	No such device	N/A
F.3.5	Terminals and operating devices		N/A
F.3.5.1	Mains appliance outlet and socket-outlet markings.....		N/A
F.3.5.2	Switch position identification marking.....		N/A
F.3.5.3	Replacement fuse identification and rating markings.....		N/A
F.3.5.4	Replacement battery identification marking.....		N/A
F.3.5.5	Terminal marking location		N/A
F.3.6	Equipment markings related to equipment classification	Class III apparatus	N/A
F.3.6.1	Class I Equipment	Class III apparatus	N/A
F.3.6.1.1	Protective earthing conductor terminal		N/A
F.3.6.1.2	Neutral conductor terminal		N/A
F.3.6.1.3	Protective bonding conductor terminals		N/A
F.3.6.2	Class II equipment (IEC60417-5172)	Class III apparatus	N/A
F.3.6.2.1	Class II equipment with or without functional earth		N/A
F.3.6.2.2	Class II equipment with functional earth terminal marking		N/A
F.3.7	Equipment IP rating marking .....	IP20 equipment	—
F.3.8	External power supply output marking		N/A
F.3.9	Durability, legibility and permanence of marking		P

EN 62368-1			
Clause	Requirement + Test	Result - Remark	Verdict
F.3.10	Test for permanence of markings	After test there was no damage on the label. The marking on the label did not fade. There was no curling and lifting of the label edge.	P
F.4	Instructions		P
	a) Equipment for use in locations where children not likely to be present - marking		P
	b) Instructions given for installation or initial use		P
	c) Equipment intended to be fastened in place		N/A
	d) Equipment intended for use only in restricted access area		N/A
	e) Audio equipment terminals classified as ES3 and other equipment with terminals marked in accordance F.3.6.1		N/A
	f) Protective earthing employed as safeguard		N/A
	g) Protective earthing conductor current exceeding ES 2 limits		N/A
	h) Symbols used on equipment		N/A
	i) Permanently connected equipment not provided with all-pole mains switch		N/A
	j) Replaceable components or modules providing safeguard function		P
F.5	Instructional safeguards		P
	Where "instructional safeguard" is referenced in the test report it specifies the required elements, location of marking and/or instruction		P
<b>G</b>	<b>COMPONENTS</b>		P
<b>G.1</b>	<b>Switches</b>		N/A
G.1.1	General requirements	No such device used	N/A
G.1.2	Ratings, endurance, spacing, maximum load		N/A
<b>G.2</b>	<b>Relays</b>		N/A
G.2.1	General requirements	No such device used	N/A
G.2.2	Overload test		N/A
G.2.3	Relay controlling connectors supply power		N/A
G.2.4	Mains relay, modified as stated in G.2		N/A
<b>G.3</b>	<b>Protection Devices</b>		N/A
G.3.1	Thermal cut-offs	No such device used	N/A
G.3.1.1a) &b)	Thermal cut-outs separately approved according to IEC 60730 with conditions indicated in a) & b)		N/A
G.3.1.1c)	Thermal cut-outs tested as part of the equipment as indicated in c)		N/A
G.3.1.2	Thermal cut-off connections maintained and secure		N/A

EN 62368-1			
Clause	Requirement + Test	Result - Remark	Verdict
G.3.2	Thermal links		N/A
G.3.2.1a)	Thermal links separately tested with IEC 60691	No such device used	N/A
G.3.2.1b)	Thermal links tested as part of the equipment		N/A
	Aging hours (H)..... :		—
	Single Fault Condition..... :		—
	Test Voltage (V) and Insulation Resistance (Ω).. :		—
G.3.3	PTC Thermistors	No such device used	N/A
G.3.4	Overcurrent protection devices		N/A
G.3.5	Safeguards components not mentioned in G.3.1 to G.3.5		N/A
G.3.5.1	Non-resettable devices suitably rated and marking provided		N/A
G.3.5.2	Single faults conditions..... :	(See appended Table B.4)	N/A
<b>G.4</b>	<b>Connectors</b>		N/A
G.4.1	Spacings	No such device used	N/A
G.4.2	Mains connector configuration .....		N/A
G.4.3	Plug is shaped that insertion into mains socket-outlets or appliance coupler is unlikely		N/A
<b>G.5</b>	<b>Wound Components</b>		N/A
G.5.1	Wire insulation in wound components.....	No such device used	N/A
G.5.1.2 a)	Two wires in contact inside wound component, angle between 45° and 90°		N/A
G.5.1.2 b)	Construction subject to routine testing		N/A
G.5.2	Endurance test on wound components		N/A
G.5.2.1	General test requirements		N/A
G.5.2.2	Heat run test		N/A
	Time (s)..... :		—
	Temperature (°C)..... :		—
G.5.2.3	Wound Components supplied by mains		N/A
<b>G.5.3</b>	<b>Transformers</b>		N/A
G.5.3.1	Requirements applied (IEC61204-7, IEC61558-1/-2, and/or IEC62368-1)..... :	No such device used	N/A
	Position..... :		—
	Method of protection .....		—
G.5.3.2	Insulation		N/A
	Protection from displacement of windings..... :		—
G.5.3.3	Overload test..... :		N/A
G.5.3.3.1	Test conditions		N/A
G.5.3.3.2	Winding Temperatures testing in the unit		N/A

## EN 62368-1

Clause	Requirement + Test	Result - Remark	Verdict
G.5.3.3.3	Winding Temperatures - Alternative test method		N/A
<b>G.5.4</b>	<b>Motors</b>		N/A
G.5.4.1	General requirements	No such device used	N/A
	Position .....		—
G.5.4.2	Test conditions		N/A
G.5.4.3	Running overload test		N/A
G.5.4.4	Locked-rotor overload test		N/A
	Test duration (days) .....		—
G.5.4.5	Running overload test for d.c. motors in secondary circuits		N/A
G.5.4.5.2	Tested in the unit		N/A
	Electric strength test (V).....		—
G.5.4.5.3	Tested on the Bench - Alternative test method; test time (h) .....		N/A
	Electric strength test (V).....		—
G.5.4.6	Locked-rotor overload test for d.c. motors in secondary circuits		N/A
G.5.4.6.2	Tested in the unit		N/A
	Maximum Temperature .....		N/A
	Electric strength test (V) .....		N/A
G.5.4.6.3	Tested on the bench - Alternative test method; test time (h).....		N/A
	Electric strength test (V).....		N/A
G.5.4.7	Motors with capacitors		N/A
G.5.4.8	Three-phase motors		N/A
G.5.4.9	Series motors		N/A
	Operating voltage .....		—
<b>G.6</b>	<b>Wire Insulation</b>		P
G.6.1	General		N/A
G.6.2	Solvent-based enamel wiring insulation		N/A
<b>G.7</b>	<b>Mains supply cords</b>		N/A
G.7.1	General requirements	No mains supply cords used	N/A
	Type.....		—
	Rated current (A).....		—
	Cross-sectional area (mm <sup>2</sup> ), (AWG).....		—
G.7.2	Compliance and test method		N/A
G.7.3	Cord anchorages and strain relief for non-detachable power supply cords		N/A
G.7.3.2	Cord strain relief		N/A



EN 62368-1			
Clause	Requirement + Test	Result - Remark	Verdict
G.7.3.2.1	Requirements		N/A
	Strain relief test force (N).....:		—
G.7.3.2.2	Strain relief mechanism failure		N/A
G.7.3.2.3	Cord sheath or jacket position, distance (mm).....:		—
G.7.3.2.4	Strain relief comprised of polymeric material		N/A
G.7.4	Cord Entry.....:		N/A
G.7.5	Non-detachable cord bend protection		N/A
G.7.5.1	Requirements		N/A
G.7.5.2	Mass (g) .....		—
	Diameter (m).....:		—
	Temperature (°C).....:		—
G.7.6	Supply wiring space		N/A
G.7.6.2	Stranded wire		N/A
G.7.6.2.1	Test with 8 mm strand		N/A
<b>G.8</b>	<b>Varistors</b>		N/A
G.8.1	General requirements	No such components used	N/A
G.8.2	Safeguard against shock		N/A
G.8.3	Safeguard against fire		N/A
G.8.3.2	Varistor overload test.....:		N/A
G.8.3.3	Temporary overvoltage.....:		N/A
<b>G.9</b>	<b>Integrated Circuit (IC) Current Limiters</b>		N/A
G.9.1 a)	Manufacturer defines limit at max. 5A.	No such components used	N/A
G.9.1 b)	Limiters do not have manual operator or reset		N/A
G.9.1 c)	Supply source does not exceed 250 VA .....		—
G.9.1 d)	IC limiter output current (max. 5A).....:		—
G.9.1 e)	Manufacturers' defined drift .....		—
G.9.2	Test Program 1		N/A
G.9.3	Test Program 2		N/A
G.9.4	Test Program 3		N/A
<b>G.10</b>	<b>Resistors</b>		N/A
G.10.1	General requirements	No such components used	N/A
G.10.2	Resistor test		N/A
G.10.3	Test for resistors serving as safeguards between the mains and an external circuit consisting of a coaxial cable		N/A
G.10.3.1	General requirements		N/A
G.10.3.2	Voltage surge test		N/A
G.10.3.3	Impulse test		N/A

EN 62368-1			
Clause	Requirement + Test	Result - Remark	Verdict
<b>G.11</b>	<b>Capacitor and RC units</b>		N/A
G.11.1	General requirements	No such components used	N/A
G.11.2	Conditioning of capacitors and RC units		N/A
G.11.3	Rules for selecting capacitors		N/A
<b>G.12</b>	<b>Optocouplers</b>		N/A
	Optocouplers comply with IEC 60747-5-5:2007 Spacing or Electric Strength Test (specify option and test results)..... :	No such components used	N/A
	Type test voltage Vini .....		—
	Routine test voltage, Vini,b .....		—
<b>G.13</b>	<b>Printed boards</b>		N/A
G.13.1	General requirements		N/A
G.13.2	Uncoated printed boards		N/A
G.13.3	Coated printed boards		N/A
G.13.4	Insulation between conductors on the same inner surface		N/A
	Compliance with cemented joint requirements (Specify construction)..... :		—
G.13.5	Insulation between conductors on different surfaces		N/A
	Distance through insulation..... :		N/A
	Number of insulation layers (pcs) .....		—
G.13.6	Tests on coated printed boards		N/A
G.13.6.1	Sample preparation and preliminary inspection		N/A
G.13.6.2a)	Thermal conditioning		N/A
G.13.6.2b)	Electric strength test		N/A
G.13.6.2c)	Abrasion resistance test		N/A
<b>G.14</b>	<b>Coating on components terminals</b>		N/A
G.14.1	Requirements .....		N/A
<b>G.15</b>	<b>Liquid filled components</b>		N/A
G.15.1	General requirements	No such components used	N/A
G.15.2	Requirements		N/A
G.15.3	Compliance and test methods		N/A
G.15.3.1	Hydrostatic pressure test		N/A
G.15.3.2	Creep resistance test		N/A
G.15.3.3	Tubing and fittings compatibility test		N/A
G.15.3.4	Vibration test		N/A
G.15.3.5	Thermal cycling test		N/A
G.15.3.6	Force test		N/A

EN 62368-1			
Clause	Requirement + Test	Result - Remark	Verdict
G.15.4	Compliance		N/A
<b>G.16</b>	<b>IC including capacitor discharge function (ICX)</b>		N/A
a)	Humidity treatment in accordance with sc5.4.8 – 120 hours	No such components used	N/A
b)	Impulse test using circuit 2 with $U_c =$ to transient voltage .....		N/A
C1)	Application of ac voltage at 110% of rated voltage for 2.5 minutes		N/A
C2)	Test voltage .....		—
D1)	10,000 cycles on and off using capacitor with smallest capacitance resistor with largest resistance specified by manufacturer		N/A
D2)	Capacitance .....		—
D3)	Resistance .....		—
<b>H</b>	<b>CRITERIA FOR TELEPHONE RINGING SIGNALS</b>		N/A
H.1	General	Not such apparatus	N/A
H.2	Method A		N/A
H.3	Method B		N/A
H.3.1	Ringling signal		N/A
H.3.1.1	Frequency (Hz) .....		—
H.3.1.2	Voltage (V) .....		—
H.3.1.3	Cadence; time (s) and voltage (V) .....		—
H.3.1.4	Single fault current (mA):.....		—
H.3.2	Tripping device and monitoring voltage.....		N/A
H.3.2.1	Conditions for use of a tripping device or a monitoring voltage complied with		N/A
H.3.2.2	Tripping device		N/A
H.3.2.3	Monitoring voltage (V).....		—
<b>J</b>	<b>INSULATED WINDING WIRES FOR USE WITHOUT INTERLEAVED INSULATION</b>		N/A
	General requirements	No such winding wire used	N/A
<b>K</b>	<b>SAFETY INTERLOCKS</b>		N/A
K.1	General requirements	No safety interlocks in the EUT	N/A
K.2	Components of safety interlock safeguard mechanism .....		N/A
K.3	Inadvertent change of operating mode		N/A
K.4	Interlock safeguard override		N/A
K.5	Fail-safe		N/A
	Compliance.....		N/A
K.6	Mechanically operated safety interlocks		N/A

EN 62368-1			
Clause	Requirement + Test	Result - Remark	Verdict
K.6.1	Endurance requirement		N/A
K.6.2	Compliance and Test method..... :		N/A
K.7	Interlock circuit isolation		N/A
K.7.1	Separation distance for contact gaps & interlock circuit elements (type and circuit location) ..... :		N/A
K.7.2	Overload test, Current (A)..... :		N/A
K.7.3	Endurance test		N/A
K.7.4	Electric strength test ..... :		N/A
<b>L</b>	<b>DISCONNECT DEVICES</b>		N/A
L.1	General requirements	Class III equipment	N/A
L.2	Permanently connected equipment		N/A
L.3	Parts that remain energized		N/A
L.4	Single phase equipment		N/A
L.5	Three-phase equipment		N/A
L.6	Switches as disconnect devices		N/A
L.7	Plugs as disconnect devices		N/A
L.8	Multiple power sources		N/A
<b>M</b>	<b>EQUIPMENT CONTAINING BATTERIES AND THEIR PROTECTION CIRCUITS</b>		P
M.1	General requirements		P
M.2	Safety of batteries and their cells		P
M.2.1	Requirements		P
M.2.2	Compliance and test method (identify method)... :		P
M.3	Protection circuits		P
M.3.1	Requirements		P
M.3.2	Tests		P
	- Overcharging of a rechargeable battery		P
	- Unintentional charging of a non-rechargeable battery	No such battery used	N/A
	- Reverse charging of a rechargeable battery		P
	- Excessive discharging rate for any battery	(See append table Annex M)	P
M.3.3	Compliance ..... :	(See append table Annex M)	P
M.4	Additional safeguards for equipment containing secondary lithium battery		N/A
M.4.1	General		N/A
M.4.2	Charging safeguards		N/A
M.4.2.1	Charging operating limits		N/A
M.4.2.2a)	Charging voltage, current and temperature..... :	(See append table Annex M.4)	—
M.4.2.2 b)	Single faults in charging circuitry..... :	(See Annex B.4 and append table Annex M.4 )	—

EN 62368-1			
Clause	Requirement + Test	Result - Remark	Verdict
M.4.3	Fire Enclosure		N/A
M.4.4	Endurance of equipment containing a secondary lithium battery		N/A
M.4.4.2	Preparation		N/A
M.4.4.3	Drop and charge/discharge function tests		N/A
	Drop		N/A
	Charge		N/A
	Discharge		N/A
M.4.4.4	Charge-discharge cycle test		N/A
M.4.4.5	Result of charge-discharge cycle test		N/A
M.5	Risk of burn due to short circuit during carrying		N/A
M.5.1	Requirement		N/A
M.5.2	Compliance and Test Method (Test of P.2.3)		N/A
M.6	Prevention of short circuits and protection from other effects of electric current		N/A
M.6.1	Short circuits		N/A
M.6.1.1	General requirements		N/A
M.6.1.2	Test method to simulate an internal fault		N/A
M.6.1.3	Compliance (Specify M.6.1.2 or alternative method) .....		N/A
M.6.2	Leakage current (mA) .....		N/A
M.7	Risk of explosion from lead acid and NiCd batteries	No such battery used	N/A
M.7.1	Ventilation preventing explosive gas concentration		N/A
M.7.2	Compliance and test method		N/A
M.8	Protection against internal ignition from external spark sources of lead acid batteries	No such battery used	N/A
M.8.1	General requirements		N/A
M.8.2	Test method		N/A
M.8.2.1	General requirements		N/A
M.8.2.2	Estimation of hypothetical volume $V_z$ (m <sup>3</sup> /s).....		—
M.8.2.3	Correction factors.....		—
M.8.2.4	Calculation of distance $d$ (mm) .....		—
M.9	Preventing electrolyte spillage	No such battery used	N/A
M.9.1	Protection from electrolyte spillage		N/A
M.9.2	Tray for preventing electrolyte spillage		N/A
M.10	Instructions to prevent reasonably foreseeable misuse (Determination of compliance: inspection, data review; or abnormal testing) .....		N/A

EN 62368-1			
Clause	Requirement + Test	Result - Remark	Verdict
<b>N</b>	<b>ELECTROCHEMICAL POTENTIALS</b>		N/A
	Metal(s) used.....	Pollution degree considered	—
<b>O</b>	<b>MEASUREMENT OF CREEPAGE DISTANCES AND CLEARANCES</b>		N/A
	Figures O.1 to O.20 of this Annex applied.....		—
<b>P</b>	<b>SAFEGUARDS AGAINST ENTRY OF FOREIGN OBJECTS AND SPILLAGE OF INTERNAL LIQUIDS</b>		N/A
P.1	General requirements		N/A
P.2.2	Safeguards against entry of foreign object		N/A
	Location and Dimensions (mm) .....		—
P.2.3	Safeguard against the consequences of entry of foreign object		N/A
P.2.3.1	Safeguards against the entry of a foreign object		N/A
	Openings in transportable equipment		N/A
	Transportable equipment with metalized plastic parts.....		N/A
P.2.3.2	Openings in transportable equipment in relation to metallized parts of a barrier or enclosure (identification of supplementary safeguard) .....		N/A
P.3	Safeguards against spillage of internal liquids		N/A
P.3.1	General requirements		N/A
P.3.2	Determination of spillage consequences		N/A
P.3.3	Spillage safeguards		N/A
P.3.4	Safeguards effectiveness		N/A
P.4	Metallized coatings and adhesive securing parts		N/A
P.4.2 a)	Conditioning testing		N/A
	Tc (°C).....		—
	Tr (°C).....		—
	Ta (°C).....		—
P.4.2 b)	Abrasion testing .....		N/A
P.4.2 c)	Mechanical strength testing.....		N/A
<b>Q</b>	<b>CIRCUITS INTENDED FOR INTERCONNECTION WITH BUILDING WIRING</b>		N/A
Q.1	Limited power sources		N/A
Q.1.1 a)	Inherently limited output		N/A
Q.1.1 b)	Impedance limited output		N/A
	- Regulating network limited output under normal operating and simulated single fault condition		N/A
Q.1.1 c)	Overcurrent protective device limited output		N/A
Q.1.1 d)	IC current limiter complying with G.9		N/A
Q.1.2	Compliance and test method		N/A

EN 62368-1			
Clause	Requirement + Test	Result - Remark	Verdict
Q.2	Test for external circuits – paired conductor cable		N/A
	Maximum output current (A) .....		—
	Current limiting method.....		—
<b>R</b>	<b>LIMITED SHORT CIRCUIT TEST</b>		N/A
R.1	General requirements		N/A
R.2	Determination of the overcurrent protective device and circuit		N/A
R.3	Test method Supply voltage (V) and short-circuit current (A). .....		N/A
<b>S</b>	<b>TESTS FOR RESISTANCE TO HEAT AND FIRE</b>		N/A
S.1	Flammability test for fire enclosures and fire barrier materials of equipment where the steady state power does not exceed 4 000 W		N/A
	Samples, material.....		—
	Wall thickness (mm).....		—
	Conditioning (°C).....		—
	Test flame according to IEC 60695-11-5 with conditions as set out		N/A
	- Material not consumed completely		N/A
	- Material extinguishes within 30s		N/A
	- No burning of layer or wrapping tissue		N/A
S.2	Flammability test for fire enclosure and fire barrier integrity		N/A
	Samples, material.....		—
	Wall thickness (mm).....		—
	Conditioning (°C).....		—
	Test flame according to IEC 60695-11-5 with conditions as set out		N/A
	Test specimen does not show any additional hole		N/A
S.3	Flammability test for the bottom of a fire enclosure		N/A
	Samples, material.....		—
	Wall thickness (mm).....		—
	Cheesecloth did not ignite		N/A
S.4	Flammability classification of materials		N/A
S.5	Flammability test for fire enclosures and fire barrier materials of equipment where the steady state power does not exceed 4 000 W		N/A
	Samples, material.....		—
	Wall thickness (mm).....		—
	Conditioning (test condition), (°C).....		—

EN 62368-1			
Clause	Requirement + Test	Result - Remark	Verdict
	Test flame according to IEC 60695-11-20 with conditions as set out		N/A
	After every test specimen was not consumed completely		N/A
	After fifth flame application, flame extinguished within 1 min		N/A
<b>T</b>	<b>MECHANICAL STRENGTH TESTS</b>		<b>P</b>
T.1	General requirements		P
T.2	Steady force test, 10 N .....	For component	P
T.3	Steady force test, 30 N .....		P
T.4	Steady force test, 100 N .....		N/A
T.5	Steady force test, 250 N .....	For plastic enclosure	P
T.6	Enclosure impact test		N/A
	Fall test		N/A
	Swing test		N/A
T.7	Drop test .....		P
T.8	Stress relief test.....		P
T.9	Impact Test (glass)		N/A
T.9.1	General requirements		N/A
T.9.2	Impact test and compliance		N/A
	Impact energy (J).....		—
	Height (m).....		—
T.10	Glass fragmentation test.....		N/A
T.11	Test for telescoping or rod antennas		N/A
	Torque value (Nm) .....		—
<b>U</b>	<b>MECHANICAL STRENGTH OF CATHODE RAY TUBES (CRT) AND PROTECTION AGAINST THE EFFECTS OF IMPLOSION</b>		<b>N/A</b>
U.1	General requirements		N/A
U.2	Compliance and test method for non-intrinsically protected CRTs		N/A
U.3	Protective Screen.....		N/A
<b>V</b>	<b>DETERMINATION OF ACCESSIBLE PARTS (FINGERS, PROBES AND WEDGES)</b>		<b>N/A</b>
V.1	Accessible parts of equipment		N/A
V.2	Accessible part criterion		N/A



EN 62368-1			
Clause	Requirement + Test	Result - Remark	Verdict

4.1.2	TABLE: List of critical components				P
Object / part No.	Manufacturer/ trademark	Type / model	Technical data	Standard	Mark(s) of conformity
Plastic enclosure	Interchangeable	Interchangeable	PC, V-0, 120°C, min. thickness 2.0mm	UL 94	UL
PCB	Interchangeable	Interchangeable	V-0, min. 130°C	UL 796	UL
Supplementary information:					

4.8.4	TABLE: Lithium coin/button cell batteries mechanical tests			N/A
(The following mechanical tests are conducted in the sequence noted.)				
4.8.4.2	TABLE: Stress Relief test			—
Part	Material	Oven Temperature (°C)	Comments	
4.8.4.3	TABLE: Battery replacement test			—
Battery part no.....:			—	
Battery Installation/withdrawal		Battery Installation/Removal Cycle	Comments	
		1		
		2		
		3		
		4		
		5		
		6		
		7		
		8		
		9		
		10		
4.8.4.4	TABLE: Drop test			—
Impact Area	Drop Distance	Drop No.	Observations	
		1		
		2		
		3		
4.8.4.5	TABLE: Impact			—
Impacts per surface	Surface tested	Impact energy (Nm)	Comments	

## EN 62368-1

Clause	Requirement + Test	Result - Remark	Verdict
--------	--------------------	-----------------	---------

4.8.4	TABLE: Lithium coin/button cell batteries mechanical tests			N/A
(The following mechanical tests are conducted in the sequence noted.)				
4.8.4.6	TABLE: Crush test			—
Test position	Surface tested	Crushing Force (N)	Duration force applied (s)	
Supplementary information:				

4.8.5	TABLE: Lithium coin/button cell batteries mechanical test result			N/A
Test position	Surface tested	Force (N)	Duration force applied (s)	
Supplementary information:				

5.2	Table: Classification of electrical energy sources						P
5.2.2.2 – Steady State Voltage and Current conditions							
No.	Supply Voltage	Location (e.g. circuit designation)	Test conditions	Parameters			ES Class
				U (Vrms or Vpk)	I (A <sub>pk</sub> or A <sub>rms</sub> )	Hz	
1	6VDC	Input	Normal	-	-	-	ES1
			Abnormal	-	-	-	
			Single fault – SC/OC	-	-	-	

## EN 62368-1

Clause	Requirement + Test	Result - Remark	Verdict
--------	--------------------	-----------------	---------

## 5.2.2.3 - Capacitance Limits

No.	Supply Voltage	Location (e.g. circuit designation)	Test conditions	Parameters		ES Class
				Capacitance, nF	Upk (V)	
			Normal			
			Abnormal			
			Single fault – SC/OC			

## 5.2.2.4 - Single Pulses

No.	Supply Voltage	Location (e.g. circuit designation)	Test conditions	Parameters			ES Class
				Duration (ms)	Upk (V)	l <sub>pk</sub> (mA)	
			Normal				
			Abnormal				
			Single fault – SC/OC				

## 5.2.2.5 - Repetitive Pulses

No.	Supply Voltage	Location (e.g. circuit designation)	Test conditions	Parameters			ES Class
				Duration (ms)	Upk (V)	l <sub>pk</sub> (mA)	
			Normal				
			Abnormal				
			Single fault – SC/OC				

## Test Conditions:

Normal –

Abnormal -

Supplementary information: SC=Short Circuit, OC=Short Circuit

## EN 62368-1

Clause	Requirement + Test	Result - Remark	Verdict
--------	--------------------	-----------------	---------

5.4.1.4, 6.3.2, 9.0, B.2.6	TABLE: Temperature measurements						P	
	Supply voltage (V) .....	6Vdc					—	
	Ambient T <sub>min</sub> (°C) .....	24.2					—	
	Ambient T <sub>max</sub> (°C) .....	24.5					—	
	T <sub>ma</sub> (°C) .....	40					—	
Maximum measured temperature T of part/at:		T (°C)				Allowed T <sub>max</sub> (°C)		
PCB		52.2				130		
Plastic Enclosure inside		43.6				Ref		
Accessible parts:								
Plastic Enclosure outside		27.3				48		
Button		26.9				48		
Ambient		25				0		
Supplementary information:								
Temperature T of winding:		t <sub>1</sub> (°C)	R <sub>1</sub> (Ω)	t <sub>2</sub> (°C)	R <sub>2</sub> (Ω)	T (°C)	Allowed T <sub>max</sub> (°C)	Insulation class
--		--	--	--	--	--	--	--
--		--	--	--	--	--	--	--
Supplementary information:								
Note 1: T <sub>ma</sub> should be considered as directed by applicable requirement								

5.4.1.10.2	TABLE: Vicat softening temperature of thermoplastics			N/A
Penetration (mm).....				—
Object/ Part No./Material		Manufacturer/t rademark	T softening (°C)	
supplementary information:				

5.4.1.10.3	TABLE: Ball pressure test of thermoplastics		N/A
Allowed impression diameter (mm) .....		≤ 2 mm	—
Object/Part No./Material		Test temperature (°C)	Impression diameter (mm)
Supplementary information:			

## EN 62368-1

Clause	Requirement + Test	Result - Remark	Verdict
--------	--------------------	-----------------	---------

<b>5.4.2.2, 5.4.2.4 and 5.4.3</b>	<b>TABLE: Minimum Clearances/Creepage distance</b>		<b>N/A</b>
-----------------------------------	--	--	------------

Clearance (cl) and creepage distance (cr) at/of/between:	Up (V)	U r.m.s. (V)	Frequency (kHz) <sup>1</sup>	Required cl (mm)	cl (mm) <sup>2</sup>	Required <sup>3</sup> cr (mm)	cr (mm)

Supplementary information:

Note 1: Only for frequency above 30 kHz

Note 2: See table 5.4.2.4 if this is based on electric strength test

Note 3: Provide Material Group

<b>5.4.2.3</b>	<b>TABLE: Minimum Clearances distances using required withstand voltage</b>		<b>N/A</b>
----------------	---	--	------------

**Overvoltage Category (OV):****Pollution Degree:**

Clearance distanced between:	Required withstand voltage	Required cl (mm)	Measured cl (mm)

Supplementary information:

<b>5.4.2.4</b>	<b>TABLE: Clearances based on electric strength test</b>		<b>N/A</b>
----------------	--	--	------------

Test voltage applied between:	Required cl (mm)	Test voltage (kV) peak/ r.m.s. / d.c.	Breakdown Yes / No

Supplementary information:

<b>5.4.4.2, 5.4.4.5 c) 5.4.4.9</b>	<b>TABLE: Distance through insulation measurements</b>		<b>N/A</b>
------------------------------------	--	--	------------

Distance through insulation di at/of:	Peak voltage (V)	Frequency (kHz)	Material	Required DTI (mm)	DTI (mm)

Supplementary information:

<b>5.4.9</b>	<b>TABLE: Electric strength tests</b>		<b>N/A</b>
--------------	---------------------------------------	--	------------

Test voltage applied between:	Voltage shape (AC, DC)	Test voltage (V)	Breakdown Yes / No

Functional:

**EN 62368-1**

Clause	Requirement + Test	Result - Remark	Verdict
--------	--------------------	-----------------	---------

5.4.9	TABLE: Electric strength tests			N/A
Test voltage applied between:	Voltage shape (AC, DC)	Test voltage (V)	Breakdown Yes / No	
Basic/supplementary:				
Reinforced:				
Routine Tests:				
Supplementary information:				

5.5.2.2	TABLE: Stored discharge on capacitors					N/A
Supply Voltage (V), Hz	Test Location	Operating Condition (N, S)	Switch position On or off	Measured Voltage (after 2 seconds)	ES Classification	
Supplementary information: X-capacitors installed for testing are: <input type="checkbox"/> bleeding resistor rating: <input type="checkbox"/> ICX: Notes: A. Test Location: Phase to Neutral; Phase to Phase; Phase to Earth; and/or Neutral to Earth B. Operating condition abbreviations: N – Normal operating condition (e.g., normal operation, or open fuse); S –Single fault condition						

5.6.6.2	TABLE: Resistance of protective conductors and terminations				N/A
Accessible part	Test current (A)	Duration (min)	Voltage drop (V)	Resistance (Ω)	

EN 62368-1			
Clause	Requirement + Test	Result - Remark	Verdict

<b>5.6.6.2</b>	<b>TABLE: Resistance of protective conductors and terminations</b>				<b>N/A</b>
Accessible part	Test current (A)	Duration (min)	Voltage drop (V)	Resistance (Ω)	
Supplementary information:					

<b>5.7.2.2, 5.7.4</b>	<b>TABLE: Earthed accessible conductive part</b>		<b>N/A</b>
Supply voltage..... :			—
Location	Test conditions specified in 6.1 of IEC 60990 or Fault Condition No in IEC 60990 clause 6.2.2.1 through 6.2.2.8, except for 6.2.2.7		Touch current (mA)
	1		
	2		
	3		
	4		
	5		
	6		
	7		
Supplementary Information:			
Notes:			
[1] Supply voltage is the anticipated maximum Touch Voltage			
[2] Earthed neutral conductor [Voltage differences less than 1% or more]			
[3] Specify method used for measurement as described in IEC 60990 sub-clause 4.3			
[4] IEC60990, sub-clause 6.2.2.7, Fault 7 not applicable.			
[5] (*) IEC60990, sub-clause 6.2.2.2 is not applicable if switch or disconnect device (e.g., appliance coupler) provided.			

<b>6.2.2</b>	<b>Table: Electrical power sources (PS) measurements for classification</b>				<b>P</b>
Source	Description	Measurement	Max Power after 3 s	Max Power after 5 s <sup>*</sup> )	PS Classification
1	Input circuit	Power (W) :	6	--	PS1
		VA (V) :		--	
		IA (A) :		--	
Supplementary Information:					
(*) Measurement taken only when limits at 3 seconds exceed PS1 limits					

EN 62368-1			
Clause	Requirement + Test	Result - Remark	Verdict

<b>6.2.3.1</b>	<b>Table: Determination of Potential Ignition Sources (Arcing PIS)</b>				<b>N/A</b>
Location	Open circuit voltage After 3 s (V <sub>p</sub> )	Measured r.m.s current (I <sub>rms</sub> )	Calculated value (V <sub>p</sub> x I <sub>rms</sub> )	Arcing PIS? Yes / No	
--	--	--	--	No	
Supplementary information: An Arcing PIS requires a minimum of 50 V (peak) a.c. or d.c. An Arcing PIS is established when the product of the open circuit voltage (V <sub>p</sub> ) and normal operating condition rms current (I <sub>rms</sub> ) is greater than 15.					

<b>6.2.3.2</b>	<b>Table: Determination of Potential Ignition Sources (Resistive PIS)</b>					<b>N/A</b>
Circuit Location (x-y)	Operating Condition (Normal / Describe Single Fault)	Measured wattage or VA During first 30 s (W / VA)	Measured wattage or VA After 30 s (W / VA)	Protective Circuit, Regulator, or PTC Operated? Yes / No (Comment)	Resistive PIS? Yes/No	
Supplementary Information: A combination of voltmeter, VA and ammeter IA may be used instead of a wattmeter. If a separate voltmeter and ammeter are used, the product of (VA x IA) is used to determine Resistive PIS classification. A Resistive PIS: (a) dissipates more than 15 W, measured after 30 s of normal operation, <u>or</u> (b) under single fault conditions has either a power exceeding 100 W measured immediately after the introduction of the fault if electronic circuits, regulators or PTC devices are used, or has an available power exceeding 15 W measured 30 s after introduction of the fault.						

<b>8.5.5</b>	<b>TABLE: High Pressure Lamp</b>		<b>N/A</b>
Description	Values	Energy Source Classification	
Lamp type.....:		—	
Manufacturer.....:		—	
Cat no.....:		—	
Pressure (cold) (MPa).....:		MS_	
Pressure (operating) (MPa).....:		MS_	
Operating time (minutes).....:		—	
Explosion method.....:		—	
Max particle length escaping enclosure (mm) .:		MS_	
Max particle length beyond 1 m (mm).....:		MS_	
Overall result .....			



## EN 62368-1

Clause	Requirement + Test	Result - Remark	Verdict
--------	--------------------	-----------------	---------

Supplementary information:

B.2.5	TABLE: Input test							P
U (V)	I (A)	I rated (A)	P (W)	P rated (W)	Fuse No	I fuse (A)	Condition/status	
6Vdc	0.12	1	0.72W	--	--	--	Maximum load	
Supplementary information: Equipment may be have rated current or rated power or both. Both should be measured								

B.3	TABLE: Abnormal operating condition tests							P
Ambient temperature (°C) .....					24.3		—	
Power source for EUT: Manufacturer, model/type, output rating ... :					See page 2 for details		—	
Component No.	Abnormal Condition	Supply voltage, (V)	Test time (ms)	Fuse no.	Fuse current, (A)	T-couple	Temp. (°C)	Observation
Speaker	SC	6VDC	10min	--	0.12A→ 0.08A	--	--	The power of the equipment decreases, the loudspeaker has no output, and there is no safety hazard

EN 62368-1			
Clause	Requirement + Test	Result - Remark	Verdict

B.4		TABLE: Fault condition tests					P
Ambient temperature (°C) .....		25.0					—
Power source for EUT: Manufacturer, model/type, output rating ...:		See page 2 for details					—
Component No.	Fault Condition	Supply voltage, (V)	Test time	Fuse no.	Fuse current, (A)	Observation	
IC1	Short-circuit	12VDC	10 min.	--	--	Equipment circuit protection, no abnormal temperature rise, no safety hazard	
U11	Short-circuit	12VDC	10 min.	--	--	Equipment circuit protection, battery can not be charged normally, no abnormal temperature rise, no safety hazard	

Supplementary information:  
 Test table is provided to record abnormal and fault conditions for all applicable energy sources including Thermal burn injury. Column "Abnormal/Fault." Specify if test condition by indicating "Abnormal" then the condition for a Clause B.3 test or "Single Fault" then the condition for Clause B.4.

Annex M	TABLE: Batteries								N/A	
The tests of Annex M are applicable only when appropriate battery data is not available									N/A	
Is it possible to install the battery in a reverse polarity position?.....:									N/A	
	Non-rechargeable batteries			Rechargeable batteries						
	Discharging		Un-intentional charging	Charging		Discharging		Reversed charging		
	Meas current	Manuf. Specs.		Meas current	Manuf. Specs.	Meas. current	Manuf. Specs.	Meas. current	Manuf. Specs.	
Max. current during normal condition	--	--	--					--	--	
Max. current during fault condition	--	--	--					--	--	
Test results:									--	Verdict
- Chemical leaks									--	
- Explosion of the battery									--	
- Emission of flame or expulsion of molten metal									--	
- Electric strength tests of equipment after completion of tests									Class III equipment	--
Supplementary information: N/A										

## EN 62368-1

Clause	Requirement + Test	Result - Remark	Verdict
--------	--------------------	-----------------	---------

Annex M.4	Table: Additional safeguards for equipment containing secondary lithium batteries				N/A
Battery/Cell No.	Test conditions	Measurements			Observation
		U	I (A)	Temp (C)	
--	--	--	--	--	--
--	--	--	--	--	--

Supplementary Information:

Battery identification	Charging at T <sub>lowest</sub> (°C)	Observation	Charging at T <sub>highest</sub> (°C)	Observation
--	--	--	--	--
--	--	--	--	--

Supplementary Information:

Annex Q.1	TABLE: Circuits intended for interconnection with building wiring (LPS)					N/A
Note: Measured UOC (V) with all load circuits disconnected:						
Output Circuit	Components	Uoc (V)	Isc (A)		S (VA)	
			Meas.	Limit	Meas.	Limit
--	--	--	--	--	--	--

Supplementary Information:

T.2, T.3, T.4, T.5	TABLE: Steady force test					P
Part/Location	Material	Thickness (mm)	Force (N)	Test Duration (sec)	Observation	
Enclosure	Plastic material	See table 4.1.2	250	5S	No energy source exceed class 1 can be accessed	
Component	/	/	10	5S	No energy source exceed class 1 can be accessed	

Supplementary information:

**EN 62368-1**

Clause	Requirement + Test	Result - Remark	Verdict
--------	--------------------	-----------------	---------

<b>T.6, T.9</b>	<b>TABLE: Impact tests</b>				<b>N/A</b>
Part/Location	Material	Thickness (mm)	Vertical distance (mm)	Observation	
Supplementary information:					

<b>T.7</b>	<b>TABLE: Drop tests</b>				<b>P</b>
Part/Location	Material	Thickness (mm)	Drop Height (mm)	Observation	
Enclosure front	plastic	2.0	1000	No deformation, no cracking	
Enclosure side	plastic	2.0	1000	No deformation, no cracking	
Enclosure back	plastic	2.0	1000	No deformation, no cracking	
Supplementary information:					

<b>T.8</b>	<b>TABLE: Stress relief test</b>					<b>P</b>
Part/Location	Material	Thickness (mm)	Oven Temperature (°C)	Duration (h)	Observation	
Enclosure	plastic	2.0	70	7h	No deformation, no cracking	
Supplementary information:						

## EN 62368-1

Clause	Requirement + Test	Result - Remark	Verdict
--------	--------------------	-----------------	---------

ATTACHMENT TO TEST REPORT IEC 62368-1  
EUROPEAN GROUP DIFFERENCES AND NATIONAL DIFFERENCES  
(Audio/video, information and communication technology equipment Part 1: Safety requirements)

<b>Differences according to</b> .....:	EN 62368-1:2014:+A11:2017
<b>Attachment Form No</b> .....:	EU_GD_IEC62368_1B
<b>Attachment Originator</b> .....:	Intertek Semko AB
<b>Master Attachment</b> .....:	Date (2015-08)
<b>Copyright © 2015 IEC System of Conformity Assessment Schemes for Electrotechnical Equipment and Components (IECEE)</b>	

<b>CENELEC COMMON MODIFICATIONS (EN)</b>			
1	NOTE Z1		N/A
4.Z1	Protective devices included as integral parts of the equipment or as parts of the building installation:		P
	a) Included as parts of the equipment		P
	b) For components in series with the mains; by devices in the building installation		N/A
	c) For pluggable type B or permanently connected; by devices in the building installation		N/A
5.4.2.3.2.4	Interconnection with external circuit		N/A
10.2.1	Additional requirements in 10.5.1		N/A
10.5.1	RS1 compliance measurement conditions		P
10.6.2.1	EN 71-1:2011, 4.20 and methods and distances		N/A
10.Z1	Non-ionizing radiation from radio frequencies in the range 0 to 300 GHz		N/A
G.7.1	NOTE Z1		N/A

<b>ZB ANNEX ZB, SPECIAL NATIONAL CONDITIONS (EN)</b>			
4.1.15	<b>Denmark, Finland, Norway and Sweden:</b> Class I pluggable equipment type A marking		N/A
4.7.3	<b>United Kingdom:</b> Torque test socket-outlet BS 1363, and the plug part BS 1363.		N/A
5.2.2.2	<b>Denmark:</b> Warning for high touchcurrent		N/A
5.4.11.1 and Annex G	<b>Finland and Sweden:</b> Separation of the telecommunication network from earth		N/A
5.5.2.1	<b>Norway:</b> Capacitors rated for the applicable line-to-line voltage (230 V).		N/A
5.5.6	<b>Finland, Norway and Sweden:</b> Resistors used as basic safeguard or bridging basic insulation comply with G.10.1 and G.10.2.		N/A

EN 62368-1			
Clause	Requirement + Test	Result - Remark	Verdict
5.6.1	<b>Denmark:</b> Protection for pluggable equipment type A; integral part of the equipment		N/A
5.6.4.2.1	<b>Ireland and United Kingdom:</b> The protective current rating is taken to be 13 A		N/A
5.6.5.1	<b>Ireland and United Kingdom:</b> Conductor sizes of flexible cords to be accepted by terminals for equipment rated 10 A to 13 A		N/A
5.7.5	<b>Denmark:</b> The installation instruction affixed to the equipment if high protective conductor current		N/A
5.7.6.1	<b>Norway and Sweden:</b> Television distribution system isolation text in user manual		N/A
5.7.6.2	<b>Denmark:</b> Warning for high touch current		N/A
B.3.1 and B.4	<b>Ireland and United Kingdom:</b> Tests conducted using an external miniature circuit breaker or protective devices included as an integral part of the direct plug-in equipment		N/A
G.4.2	<b>Denmark:</b> Appliances rated $\leq 13$ A provided with a plug according to DS 60884-2-D1:2011.		N/A
	Class I equipment provided with socket- outlets provided with a plug in accordance with standard sheet DK 2-1a or DK 2-5a.		N/A
	If a single-phase equipment having rated $> 13$ A or poly-phase equipment provided with a supply cord with a plug, plug in accordance with the standard sheets DK 6-1a in DS 60884-2-D1 or EN 60309-2.		N/A
	Mains socket outlets intended for providing power to Class II apparatus rated 2,5 A in accordance with DS 60884-2-D1:2011 standard sheet DKA 1-4a.		N/A
	Other current rating socket outlets in compliance with Standard Sheet DKA 1-3a or DKA 1-1c.		N/A
	Mains socket-outlets with earth in compliance with DS 60884-2-D1:2011 Standard Sheet DK 1-3a, DK 1-1c, DK1-1d, DK 1-5a or DK 1-7a		N/A
G.4.2	<b>United Kingdom:</b> The plug part of direct plug-in equipment assessed to BS 1363		N/A

## EN 62368-1

Clause	Requirement + Test	Result - Remark	Verdict
G.7.1	<b>United Kingdom:</b> Equipment fitted with a 'standard plug' in accordance with the Plugs and Sockets etc (Safety) Regulations 1994, Statutory Instrument 1994 No. 1768		N/A
G.7.1	<b>Ireland:</b> Apparatus provided with a plug in accordance with Statutory Instrument 525: 1997, "13 A Plugs and Conversion Adapters for Domestic Use		N/A
G.7.2	<b>Ireland and United Kingdom:</b> A power supply cord for equipment which is rated over 10 A and up to and including 13 A.		N/A

ZC	ANNEX ZC, NATIONAL DEVIATIONS (EN)		
10.5.2	<b>Germany:</b> Cathode ray tube intended for the display of visual images, authorization or application of type approval and marking.		N/A
F.1	<b>Italy:</b> The power consumption in Watts (W) indicated on TV receiver and in instruction for use		N/A
	TV receivers provided with an instruction for use, schematic diagrams and adjustments procedure in Italian language.		N/A
	Marking for controls and terminals in Italian language.		N/A
	Conformity declaration according to the above requirements in the instruction manual		N/A
	First importers of TV receivers manufactured outside EEC previous conformity certification to the Italian Post Ministry and Certification number on the backcover.		N/A

Pictures

Photo 1

view

- front
- back
- side
- top
- internal
- bottom



Photo 2

view

- front
- back
- side
- top
- internal
- bottom





Pictures

Photo 3

view

- front
- back
- side
- top
- internal
- bottom



Photo 4

view

- front
- back
- side
- top
- internal
- bottom



Pictures

Photo 5

view

- front
- back
- side
- top
- internal
- bottom

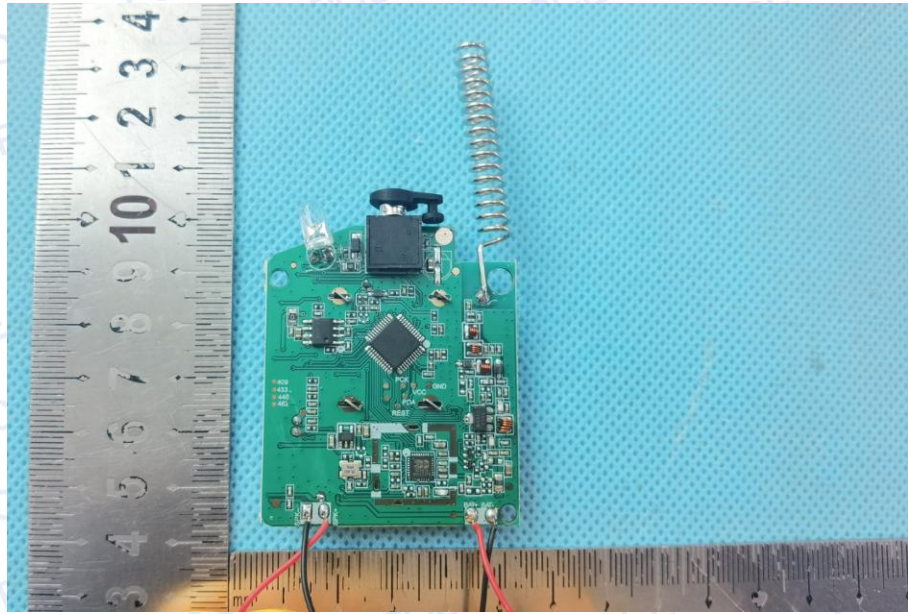


Photo 6

view

- front
- back
- side
- top
- internal
- bottom



--- END OF REPORT ---