



EC Type Examination Certificate Number: **0120/SGS0141**

Jiaxing Eastron Electronic Instruments Co., Ltd

No 1369 Chengnan Road
Jiaxing
Zhejiang
China

Instrument Identification
SDM120 Series

Single Phase, Active Import (kWh) Indoor, Electricity Meter

Instrument Traceable Number
0120/SGS0141

has been assessed and certified as meeting the requirements of

EC Directive 2004/22/EC **on Measuring Instruments Annex B**

It is certified that the manufacturer's technical design and specimen for the above instrument has been examined and, based on the evidence submitted, it is considered that the instrument conforms to the requirements of MI-003 of EC Directive 2004/22/EC

This certificate must be used in conjunction with a certificate covering the product verification as required in Annex D or Annex F

This certificate is valid until 17th February 2024
Issue 2

Certification is based on report number(s) SHES130800321401 dated 18th February 2014

Authorised Signature

Jan Saunders

SGS United Kingdom Limited, Notified Body 0120
Unit 202B Worle Parkway, Weston-super-Mare, BS22 6WA UK
t +44 (0)1934 522917 f +44 (0)1934 522137 www.sgs.com

Contact Address
SGS United Kingdom Ltd, Units 12A & 12B, South Industrial Estate, Bowburn, Durham, DH6 5AD UK t +44 (0)191 377 2000 f +44 (0)191 377 2020 www.sgs.com



EC-Type Examination Certificate Number:

0120/ SGS0141

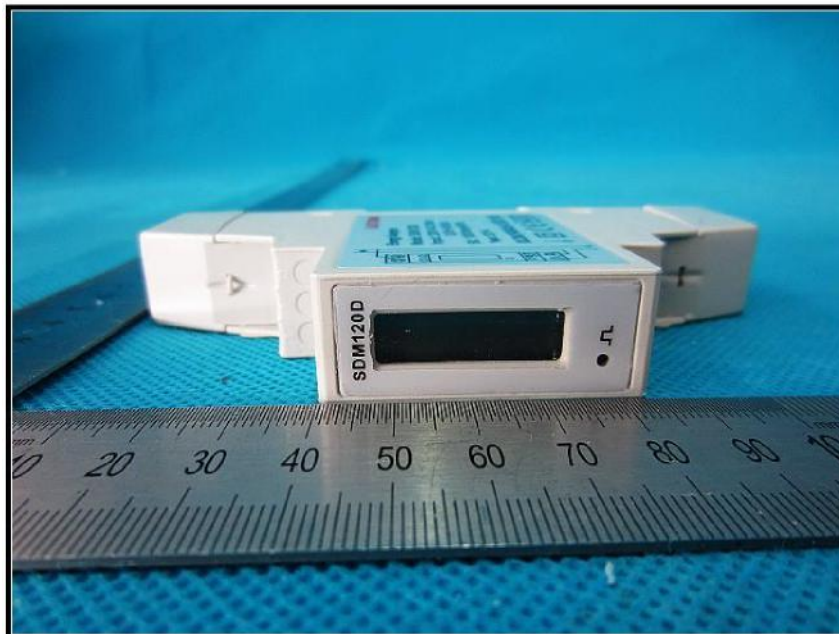
Issue Number: 2

Dated: 27th November 2015**1. Technical Data**

Manufacturer	Jiaxing Eastron Electronic Instruments Co., Ltd.
Meter Types	SDM120A, SDM120D, SDM120DB, SDM120-Modbus
Voltage Rating (U_n)	230V
Current Rating ($I_{min} - I_{ref} (I_{max})$)	0.25-5(45)A
Frequency (F_n)	50Hz
Active Accuracy Class (kWh)	A or B (kWh)
Type of circuit	1p2w
Temperature Range	-25°C to +55°C
Software/ Firmware Version No's	SDM120A, SDM120D, SDM120DB: V1.2 SDM120-Modbus: V2.3
Identification Location	Nameplate
Bill Of Materials Number's	SDM120-Measure: V2.1 SDM120-Power: V2.1 SDM120-Pulse: V2.0 SDM120Modbus: V151119
IP Rating	IP51
Insulation Protective Class	Class II
LED Pulse Constant	1000imp/ kWh
Impulse Voltage Rating	6kV
AC Voltage Rating	4kV
Main Cover Sealing Type	4 x Wire & Crimp
Integrity of meter	Inaccessible without breaking seals
Intended Location of the Meter	Indoor
Type of Register	LCD: SDM120D, SDM120DB, SDM120C, SDM120-Modbus Mechanical (SDM120A)

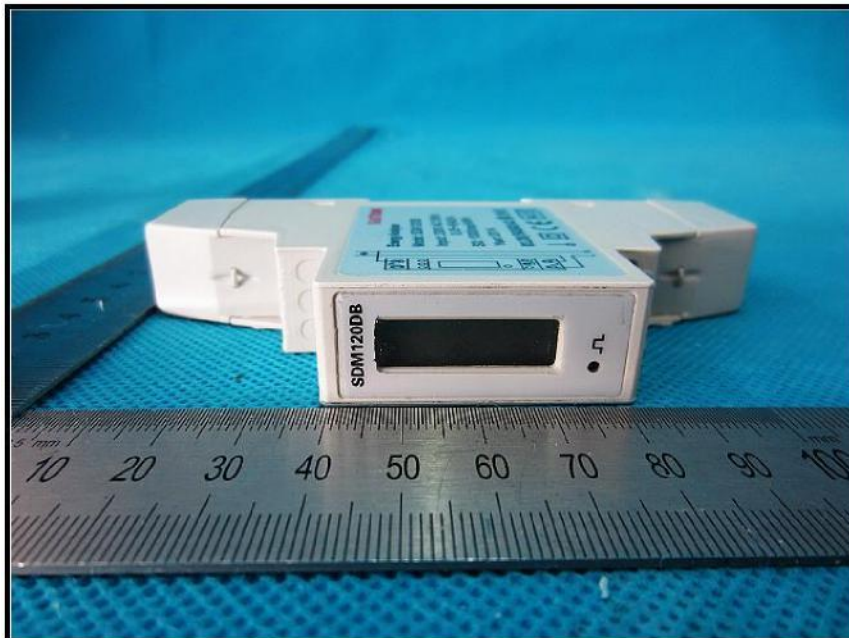
2. Photographs of Meters

SDM120D



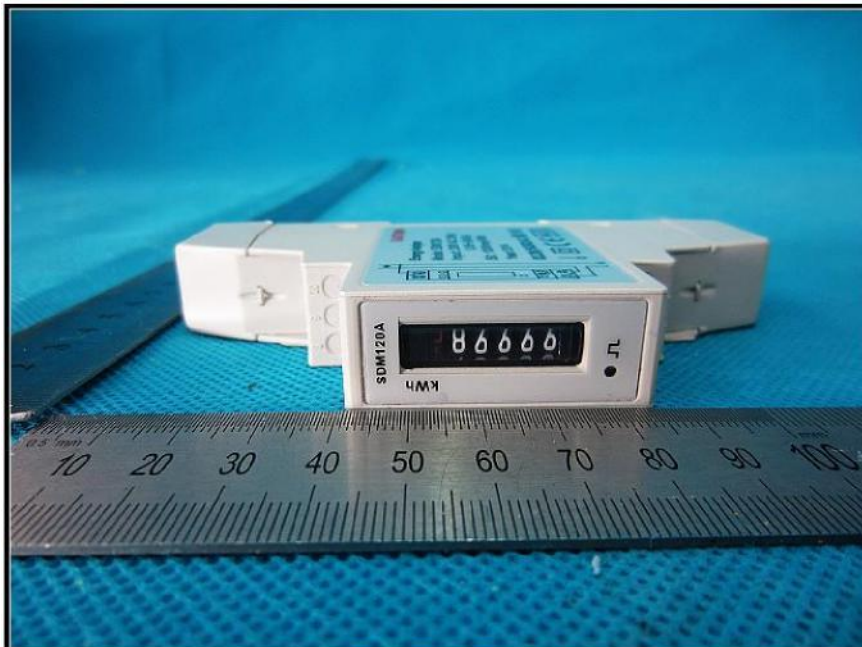
Photographs of Meters (cont)

SDM120DB



Photographs of Meters (cont)

SDM120A





EC-Type Examination Certificate Number:

0120/ SGS0132

Issue Number: 2

Dated: 27th November 2015

3. Influence factors for temperature, frequency and voltage

		Influence Factors for temperature, frequency and voltage					
Current	PF Cos	-25	-10	5	30	40	55
I _{min}	1.0	0.12	0.12	0.12	0.13	0.12	0.12
I _{tr}	1.0	0.16	0.16	0.16	0.16	0.16	0.16
10I _{tr}	1.0	0.17	0.16	0.16	0.16	0.16	0.16
I _{max}	1.0	0.13	0.13	0.13	0.13	0.13	0.13
I _{tr}	0.5ind	0.29	0.29	0.29	0.29	0.29	0.29
10I _{tr}	0.5ind	0.40	0.40	0.40	0.40	0.40	0.40
I _{max}	0.5ind	0.16	0.16	0.16	0.16	0.16	0.16
I _{tr}	0.8cap	0.24	0.24	0.24	0.24	0.24	0.24
10I _{tr}	0.8cap	0.31	0.31	0.31	0.31	0.31	0.31
I _{max}	0.8cap	0.09	0.09	0.09	0.09	0.09	0.09

During the type approval examination the influence factors for temperature, frequency and voltage are determined per load point. The table above represents the sum of the square values per load, determined via the following formula:-

$$\sigma_e(T, U, f) = \sqrt{\sigma_e^2(T, I, \cos\phi) + \sigma_e^2(U, I, \cos\phi) + \sigma_e^2(f, I, \cos\phi)}$$

where

$\sigma_e(T, I, \cos\phi) =$ Additional error due to variation of the temperature at the same load

$\sigma_e(U, I, \cos\phi) =$ Additional error due to variation of the voltage at the same load

$\sigma_e(f, I, \cos\phi) =$ Additional error due to variation of the frequency at the same load



EC-Type Examination Certificate Number:

0120/ SGS0141

Issue Number: 2


Dated: 27th November 2015

4. Annex of Variants

Product Variant Identification Details:

Type Designation	Description of meter
SDM120D	Single Phase 230V, 0.25-5(45)A LCD register
SDM120DB	Single Phase 230V, 0.25-5(45)A LCD register with backlight
SDM120A	Single Phase 230V, 0.25-5(45)A Mechanical register
SDM120- Modbus	Single Phase 230V, 0.25-5(45)A, LCD register, 2 Pulse Outputs, RS485 Communication Port, Modbus

Modifications to the meter(s) described according to approval No.**0120/ SGS0141** must be notified to the issuing body to confirm the meter(s) continuing compliance to the relevant pattern approval standard(s).

	EC-Type Examination Certificate Number:	
	0120/ SGS0141	
	Issue Number: 2	Dated: 27 th November 2015

5. Document Revision History

Issue	Date	Comments
1	18/02/2014	Initial Issue
2	27/11/2015	Version SDM120-Modbus added to approval