

**ozone**

# RAGE <sup>7HX</sup>

7.1 SURROUND HEADSET



DRIVER V1.0

USER MANUAL

## Software Installation

1. Before installation, please be sure to save other open applications and then exit, to avoid data loss after installation.
2. Before installing the driver please connect the USB headset to your computer, then in windows explorer find "Setup. exe". Double-click it for installation.
3. When starting installation application, click "NEXT"



( pic 1 )



( pic 2 )



( pic 4 )



( pic 5 )

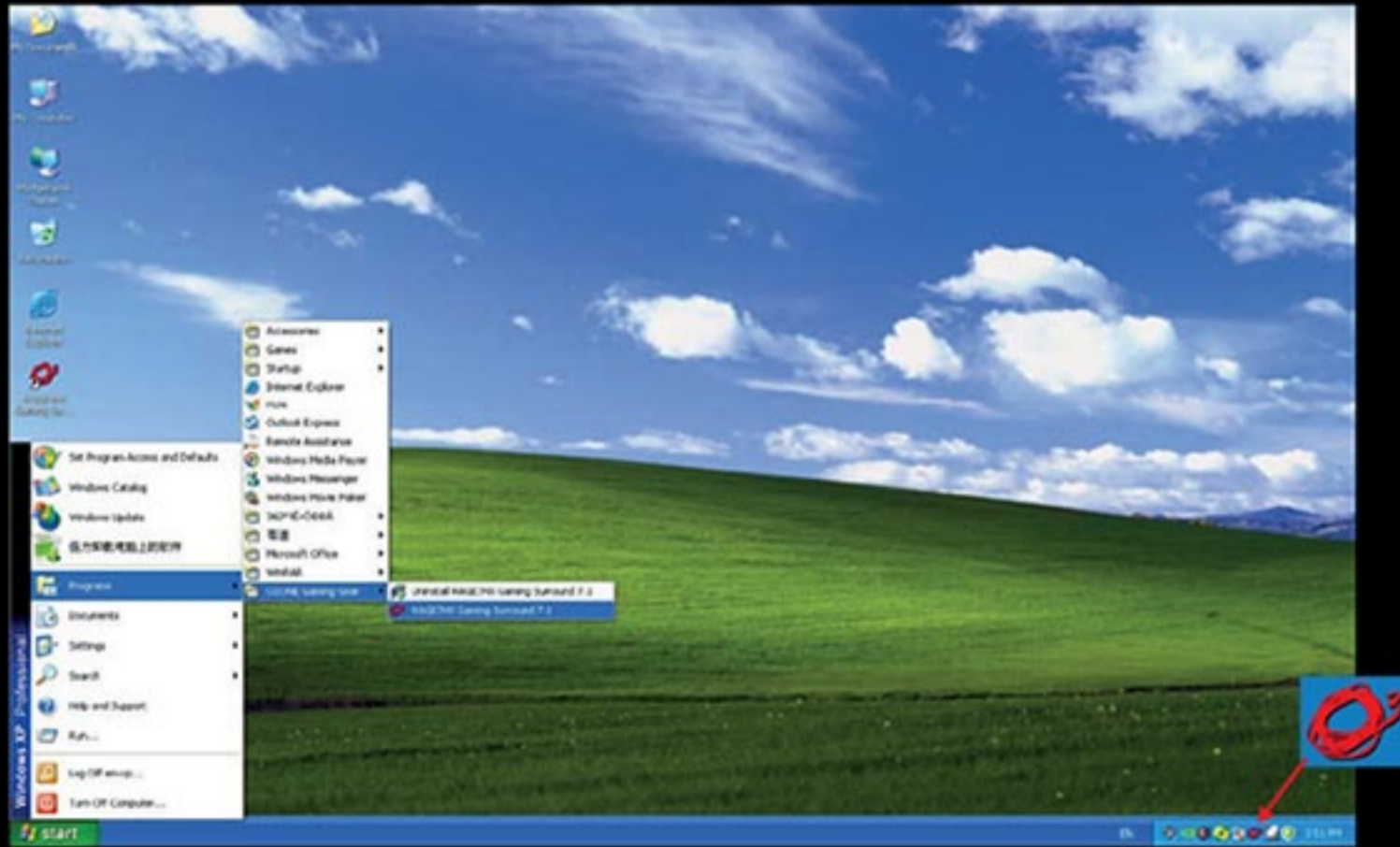
4. You need to reboot system in order to complete the installation, please click "Finish" to reboot your computer.

- (1). Please use the same USB plug which you had used for installation, because you need to reinstall the driver if you take off the USB and reinsert a different USB plug.
- (2). If you unplug the USB cable while the media is playing, it might cause driver system errors, we suggest you close the media application before you unplug the USB cable.

Windows XP Operating Interface

1. Main Setting

(1). In the tray, click the OZONE logo to pop-up the RAGE 7HX Gaming Surround 7.1 panel:



( pic 6 )

(2) Setting Interface



( pic 7 )

- 1). Analog output: selected this button to choose the channel model of analog output
- 2). Mode of analog channel: you can choose the kind of headphone setting: 2,4,6 or 8 speakers. Pls choose 6 speakers
- 3). Display connection of audio and microphone, but you can change it, it's just for your reference
- 4). DSP mode: click DSP setting, change it to DSP use mode
- 5). Switching the actual speaker: open the speaker setting then choose what you like
- 6). Digital volume control: you can adjust volume for each channel
- 7). Display channel and speaker to begin sound test
- 8). Automatic sound test: each channel can be tested automatically
- 9). Stop the sound test

2. Mixer

(1) Operating interface of Mixer, you can adjust volume of waveform and microphone.



( pic 8 )

- |   |  |
|---|--|
| 1). Balance control                     | 9). Software synthesizer volume switch |
| 2). Volume control                      | 10). CD player volume balance          |
| 3). Volume switch                       | 11). CD player volume control          |
| 4). Waveform volume balance             | 12). CD player volume switch           |
| 5). Waveform volume control             | 13). Microphone balance                |
| 6). Waveform volume switch              | 14). Microphone control                |
| 7). software synthesizer volume balance | 15). Microphone switch                 |
| 8). Software synthesizer volume control | 16). Microphone advanced setting       |

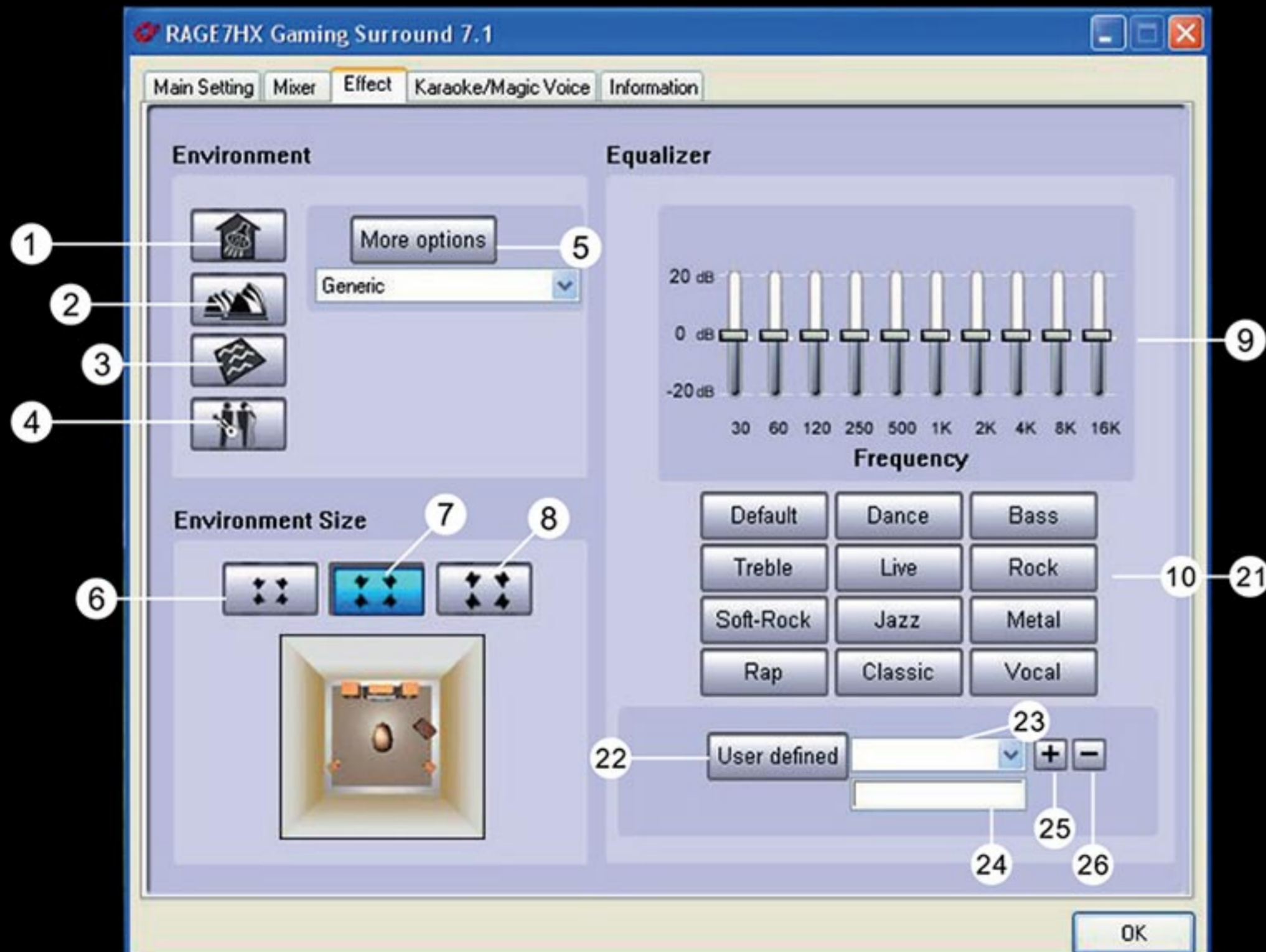
(2) Microphone Settings



( pic 9 )

- 1) Microphone volume control
- 2) Microphone switch
- 3) Microphone Enhanced Module
- 4) Waveform volume balance
- 5) Waveform volume control
- 6) Waveform switch

3. Effects



( pic10 )

Scene:

- 1). Bathroom
- 2). Opera
- 3). Under water
- 4). Music bar
- 5). Another 23 mode for choice

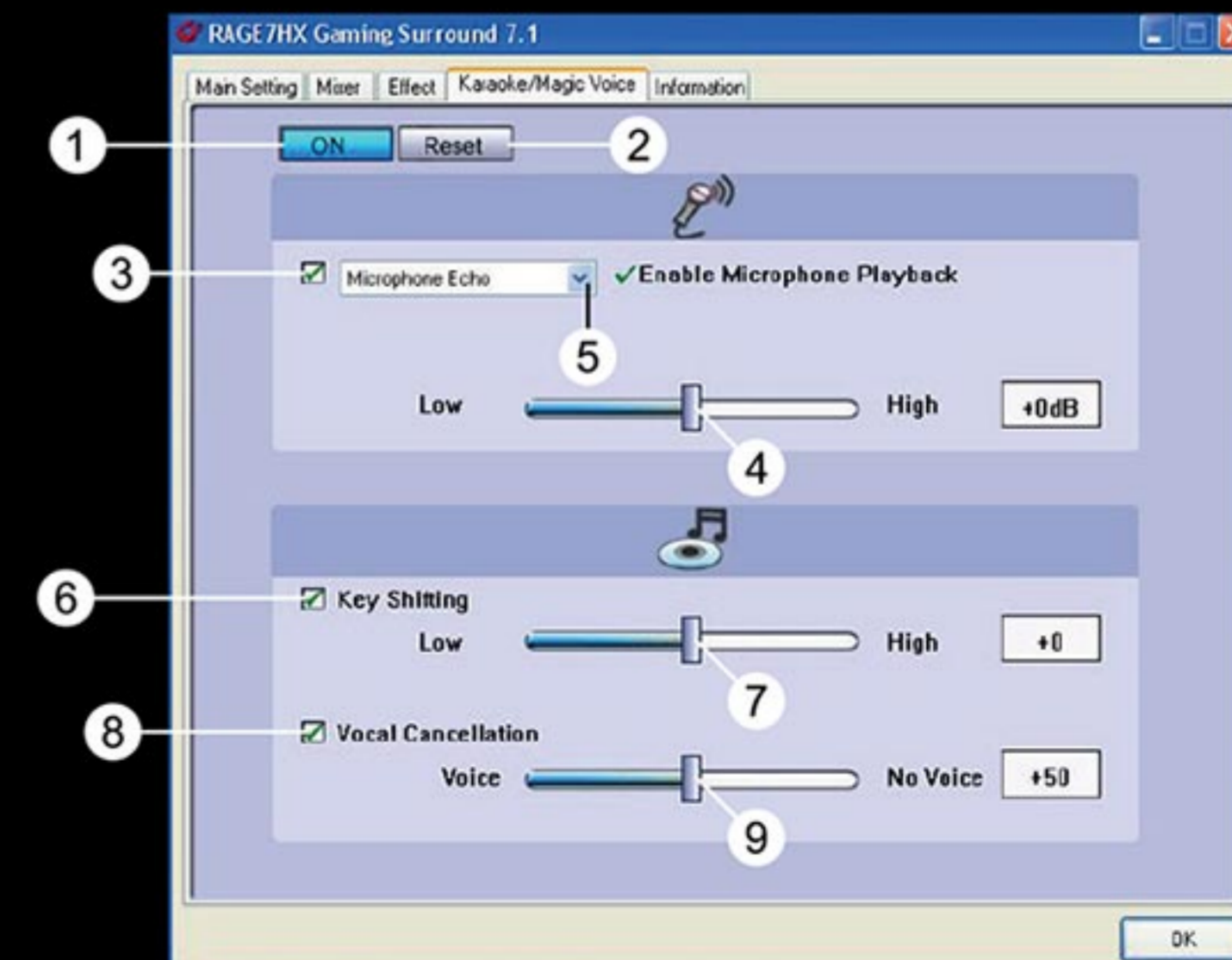
Room for scene:

- 6). Big
- 7). Medium
- 8). Small

Equalizer:

- 9). 10 Section balance adjustment
- 10). Default mode preseting
- 11). Default mode dance
- 12). Default mode bass
- 13). Default mode -high
- 14). Default mode-scene
- 15). Default mode-rock
- 16). Default mode-light rock
- 17). Default mode-jazz
- 18). Default mode-metal
- 19). Default mode-RAP
- 20). Default mode-classical
- 21). Default mode-vocal
- 22). Equalizer user define switch
- 23). Choose custom mode
- 24). User-defined name type
- 25). Add new custom mode
- 26). Delete existing custom mode

4. Karaoke:

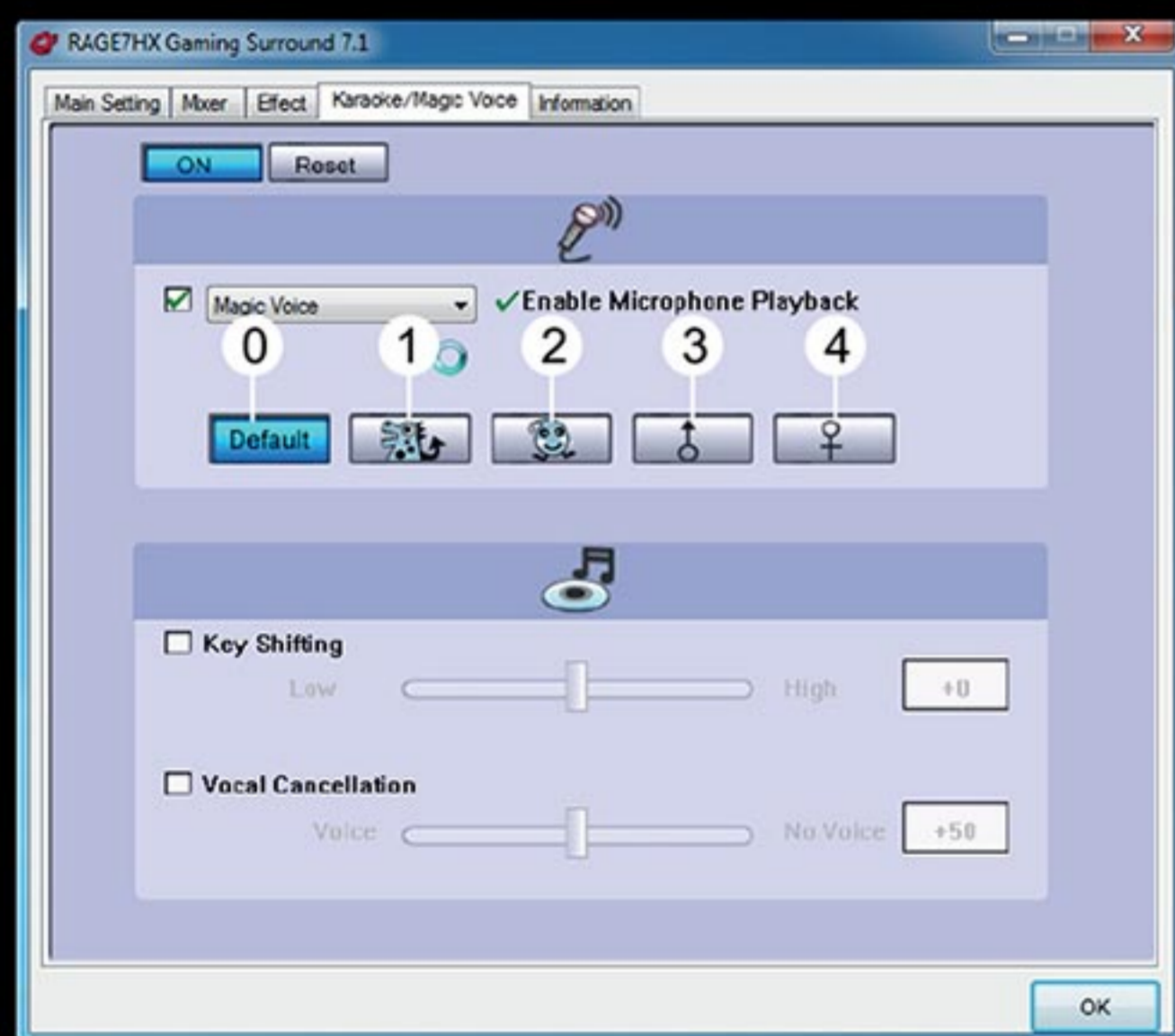


( pic11 )

- 1) On/Off: click to open and close karaoke function
- 2) Reset: click this button to return to original settings
- 3) Open the echo function of the microphone, pop-up a dialog, click "ok" to control the echo function of the microphone
- 4) Echo height controller
- 5) Pull-down menu of alchemy voice
- 6) Tone control switch
- 7) Volume control
- 8) Singing cancelling switch
- 9) Singing cancelling control

### Magic voice

We can see some effect buttons



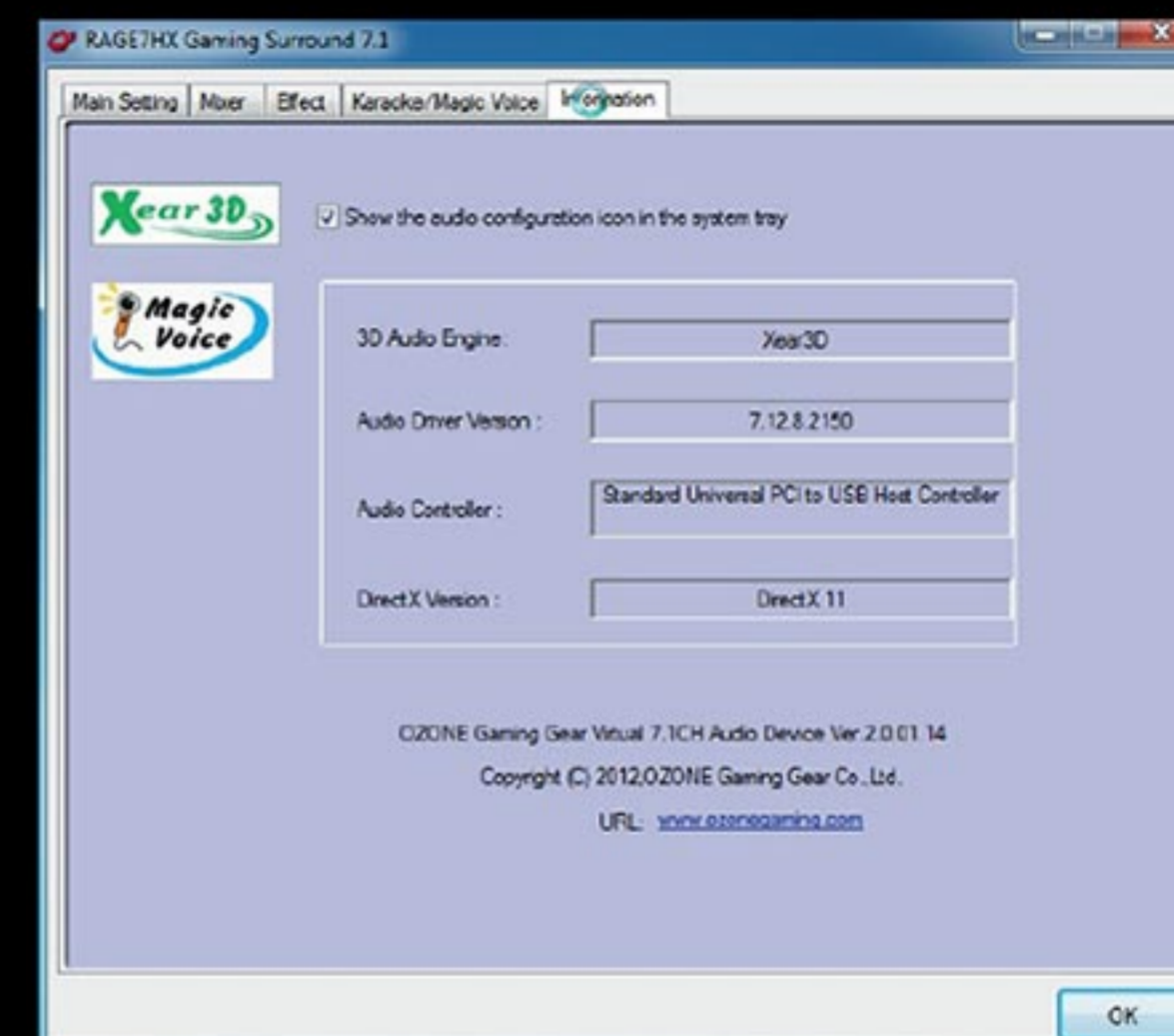
( pic12 )

- 10) Default
- 11) Virtual monster effect
- 12) Virtual cartoon effect
- 13) Virtual man's voice
- 14) Virtual woman's voice

NOTE: Please click "on" when you're not using the microphone /magic voice to avoid noise caused by this function.

### 5. Information

Version information



( pic13 )

VISTA Operating Interface

1. Icon



(pic 14)

2. Main Setting, please see pic 15,

- (1) System audio source, they are 2CH, 4CH, 6CH, 8CH for your choices, use as following:  
please choose the channel that you prefer.
- Normal setting suggestion:  
MP3, WMA, AAC, CD, VCD: 2CH  
DVD with Dol by Digital or DTS, WMA-Pro: 6CH  
DVD with Dol by Digital EX or DTS ES: 8CH  
3D Games: 8CH

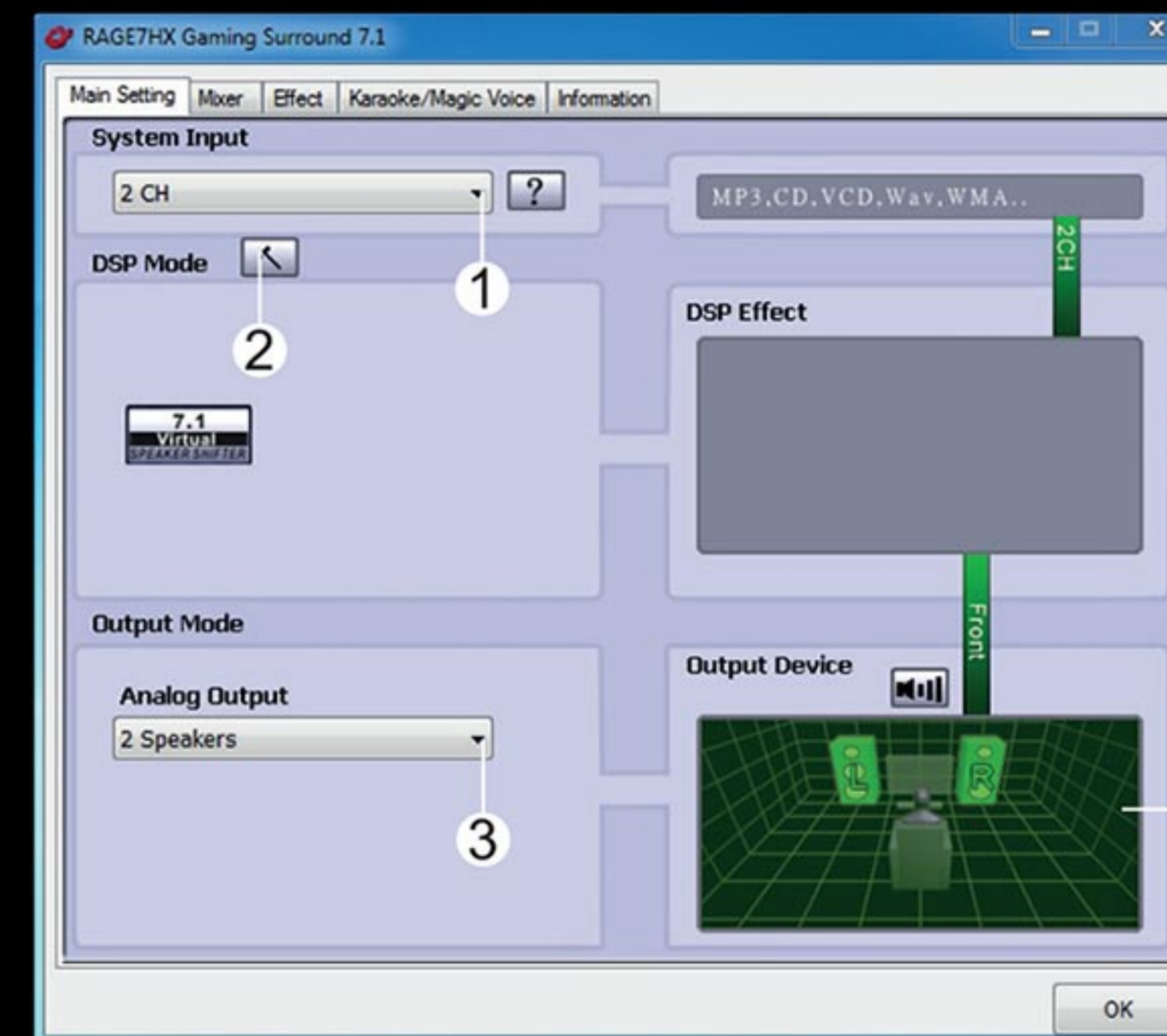
Attention:

Vista operating system will transmute the audio data to the audio device according to your data settings, impertinent settings might cause abnormal audio data transmission.

(2) DSP mode & setting effect button

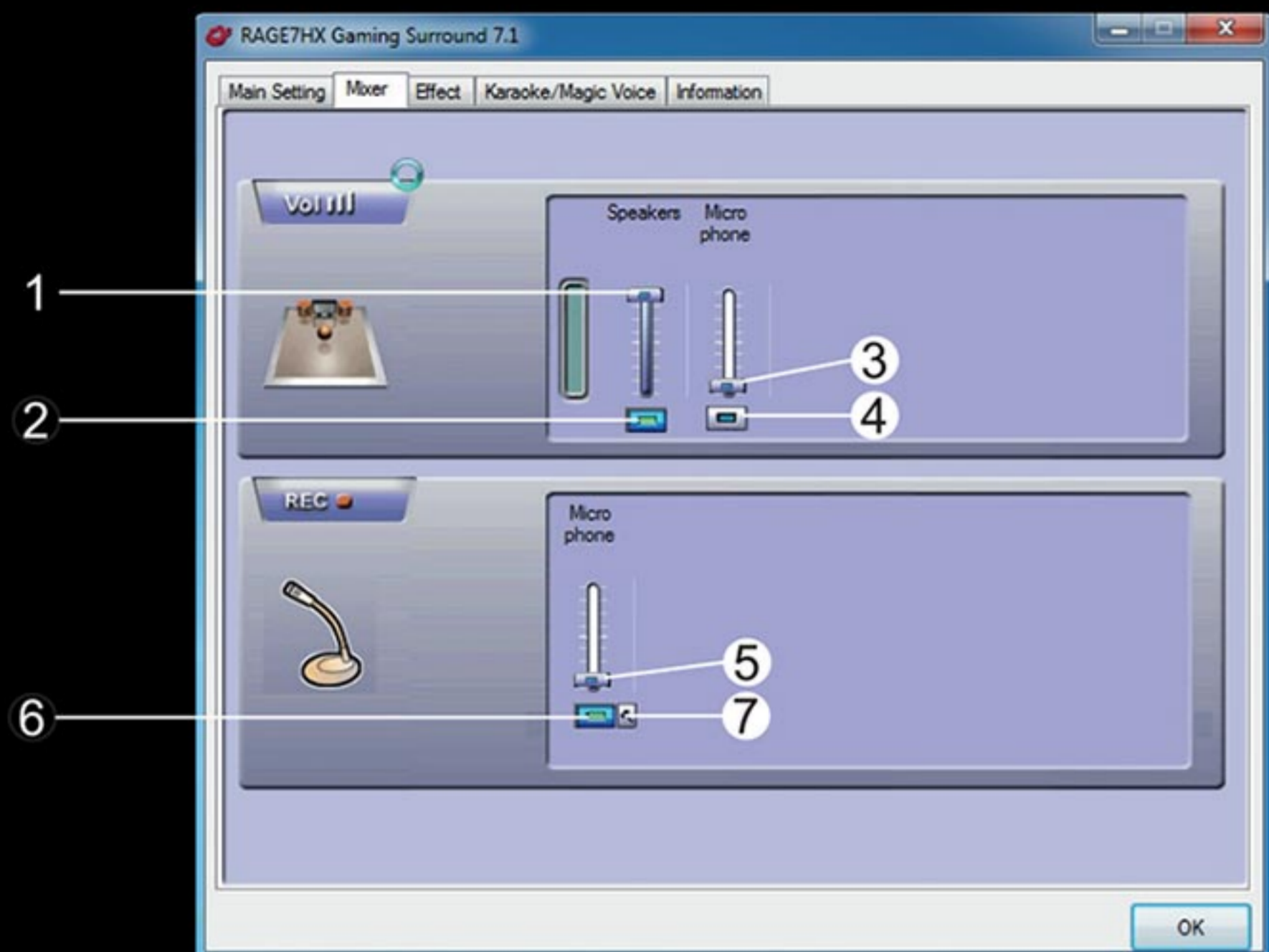
(3) Out put mode, click combobox, you have earphones and 2 speaker for your choices.

(4) Out put device testing area, click any speaker it you have sound coming form the corespoding one.



(pic 15)

### 3. Mixer, volume control and mute control



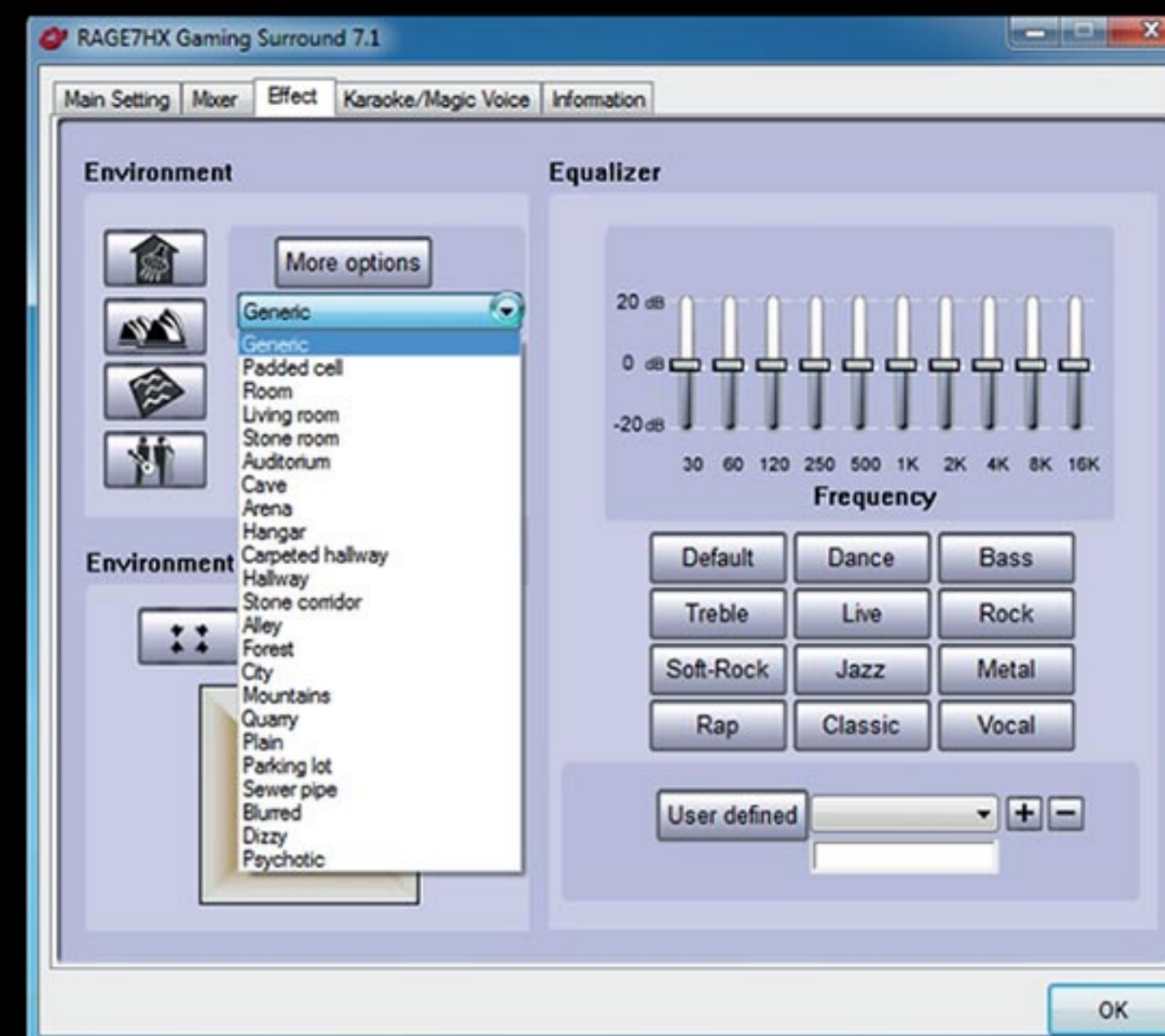
( pic 16 )

- 1) Volume control
- 2) Volume switch
- 3) Microphone volume
- 4) Microphone switch
- 5) Microphone recording volume control
- 6) Microphone recording switch
- 7) Microphone enhance settings

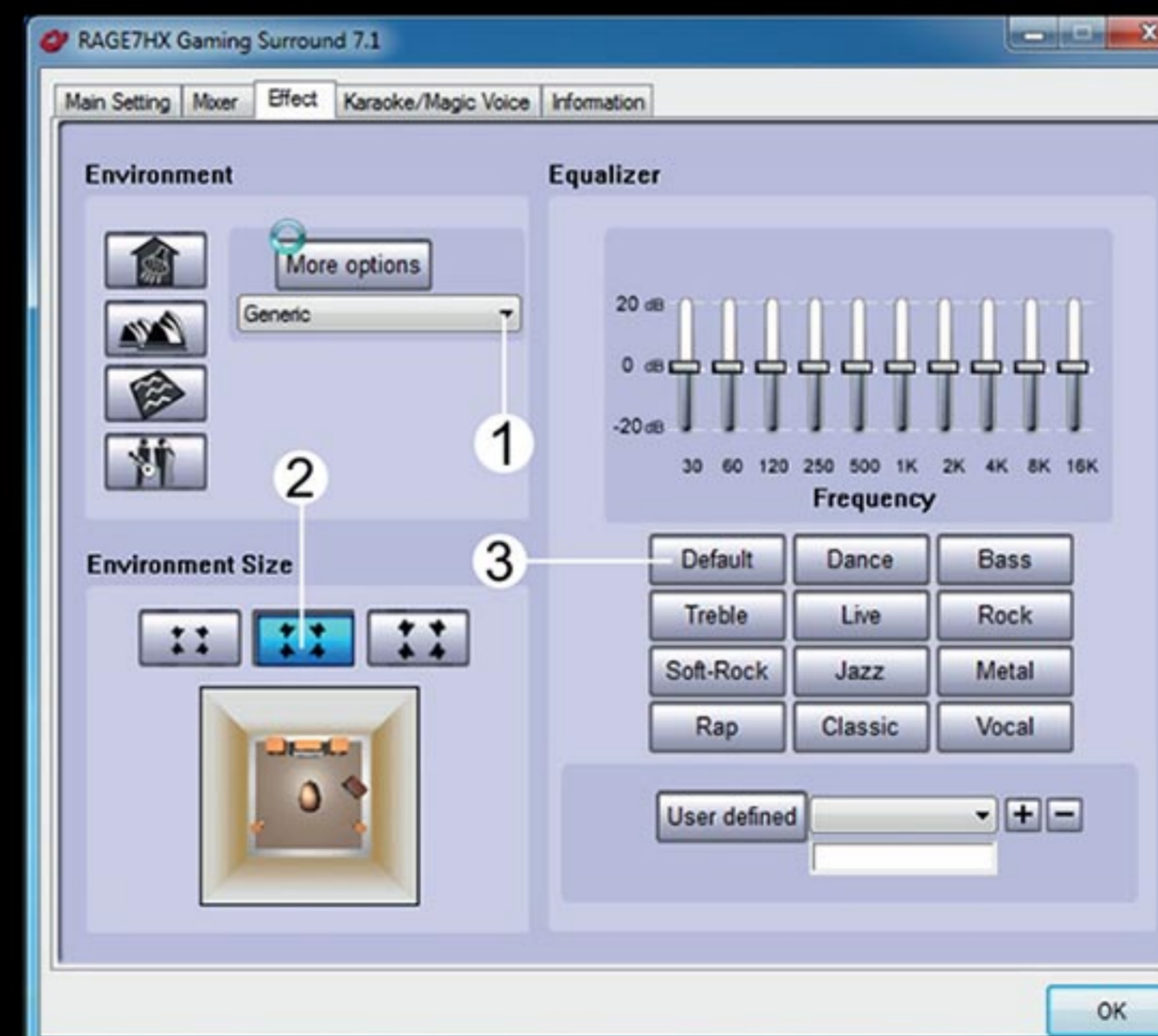
### 4. Effect, please refers- to pic 17~18, this interface is seperated in the following:

- (1) Enviroment: they are general, ward, living room ect you have 23 choices.
- (2) Space choices: large, middle, small.
- (3) Equalizer : Default, Dance, Bass ect 12 choices for your consideration.

( Remark: For more function specifications please refers to page 6 )



( pic 17 )

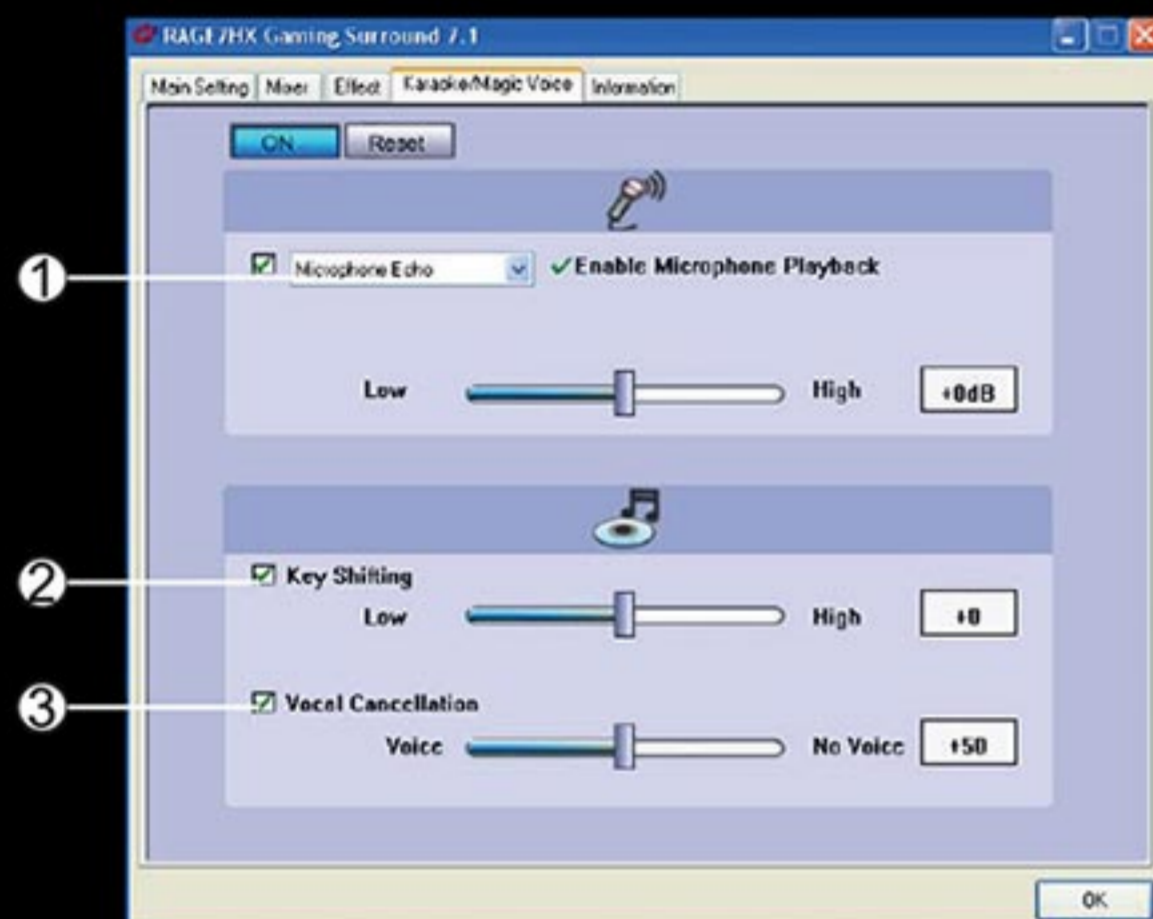


( pic 18 )

5. Karaoke/ magic sound

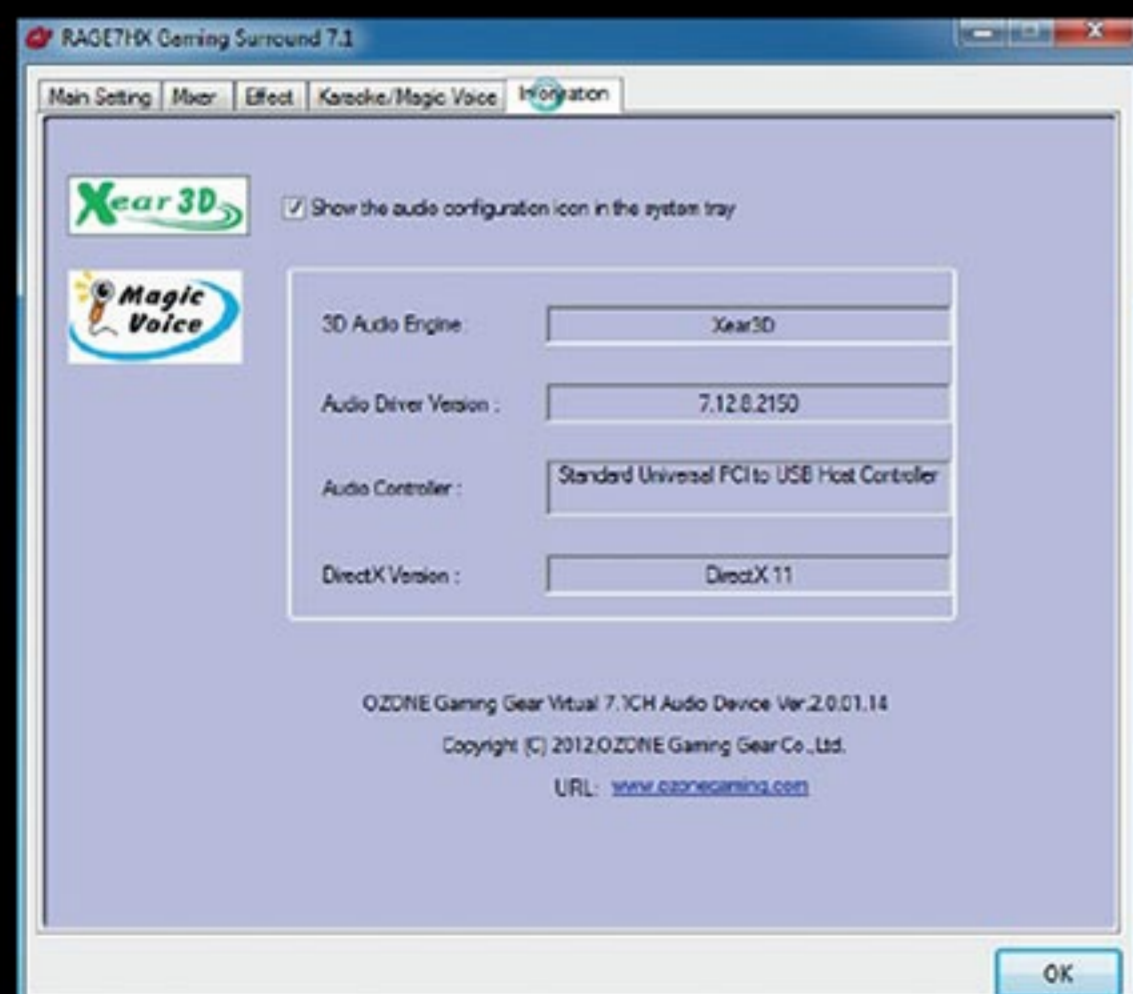
- (1) Turn on - Adjust/turn off Microphone Mixer
- (2) Turn on - Adjust/ turn off tone control
- (3) Turn on - Adjust/ turn off cancel song

(For more function specifications please refers to page 7, 8)



( pic 19)

6. Information of VGA Chipset & Driver version



( pic 20)

Windows 7 Operating Interface

1. Icon



( pic 21)



## 2. Main Setting, please refers to pic 22

(1) System audio source, they are 2CH, 4CH, 6CH, 8CH for your choices, use as following indications:

please choose the channel that you prefer.

Normal setting suggestions:

MP3, WMA, AAC, CD, VCD: 2CH

DVD with Dol by Digital or DTS, WMA-Pro: 6CH

DVD with Dol by Digital EX or DTS ES: 8CH

3D Games: 8CH

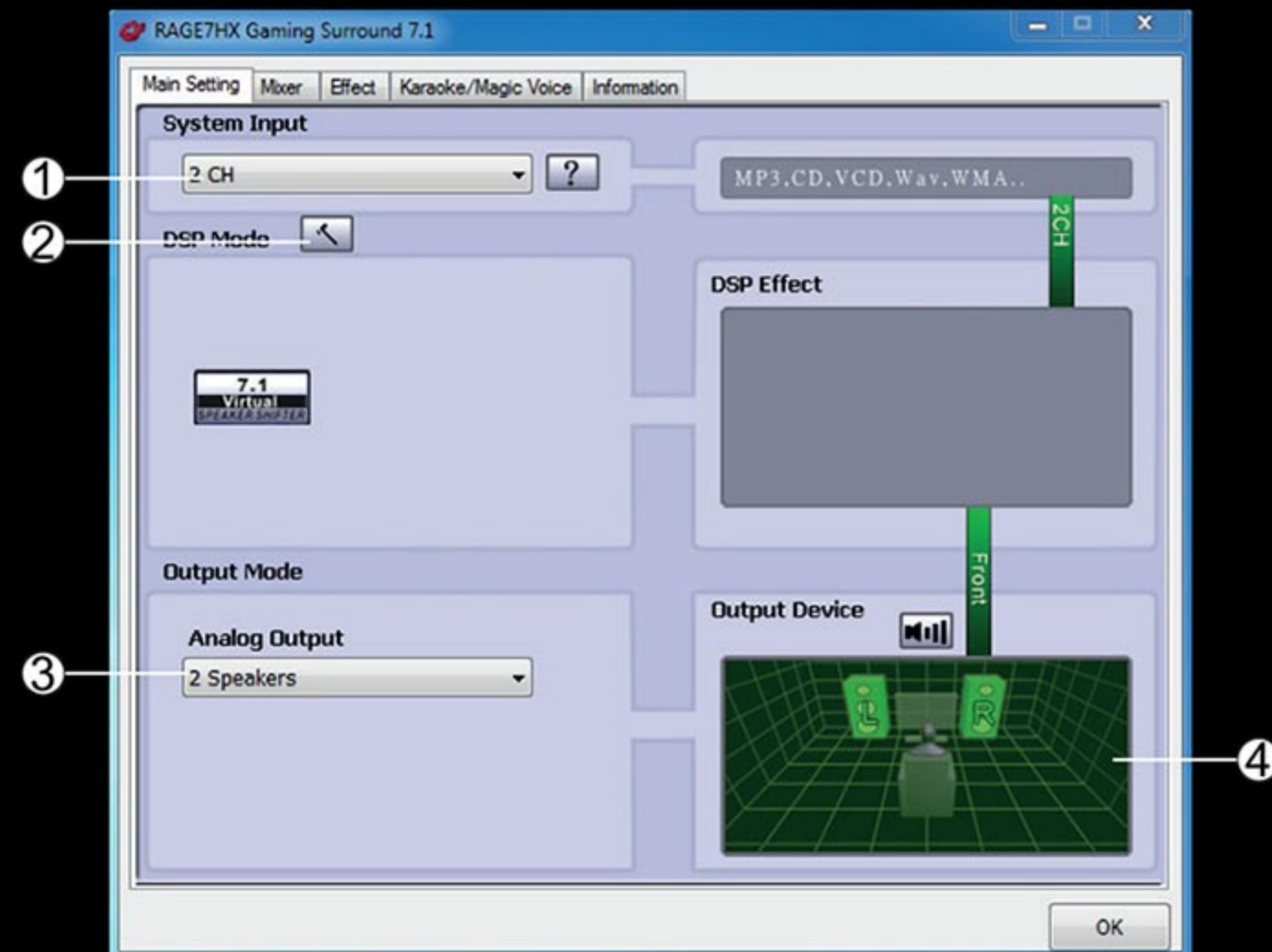
Attention:

Windows 7 operating system will transmit the audio data to the audio device according to your data settings, impertinent settings might cause abnormal audio data transmission.

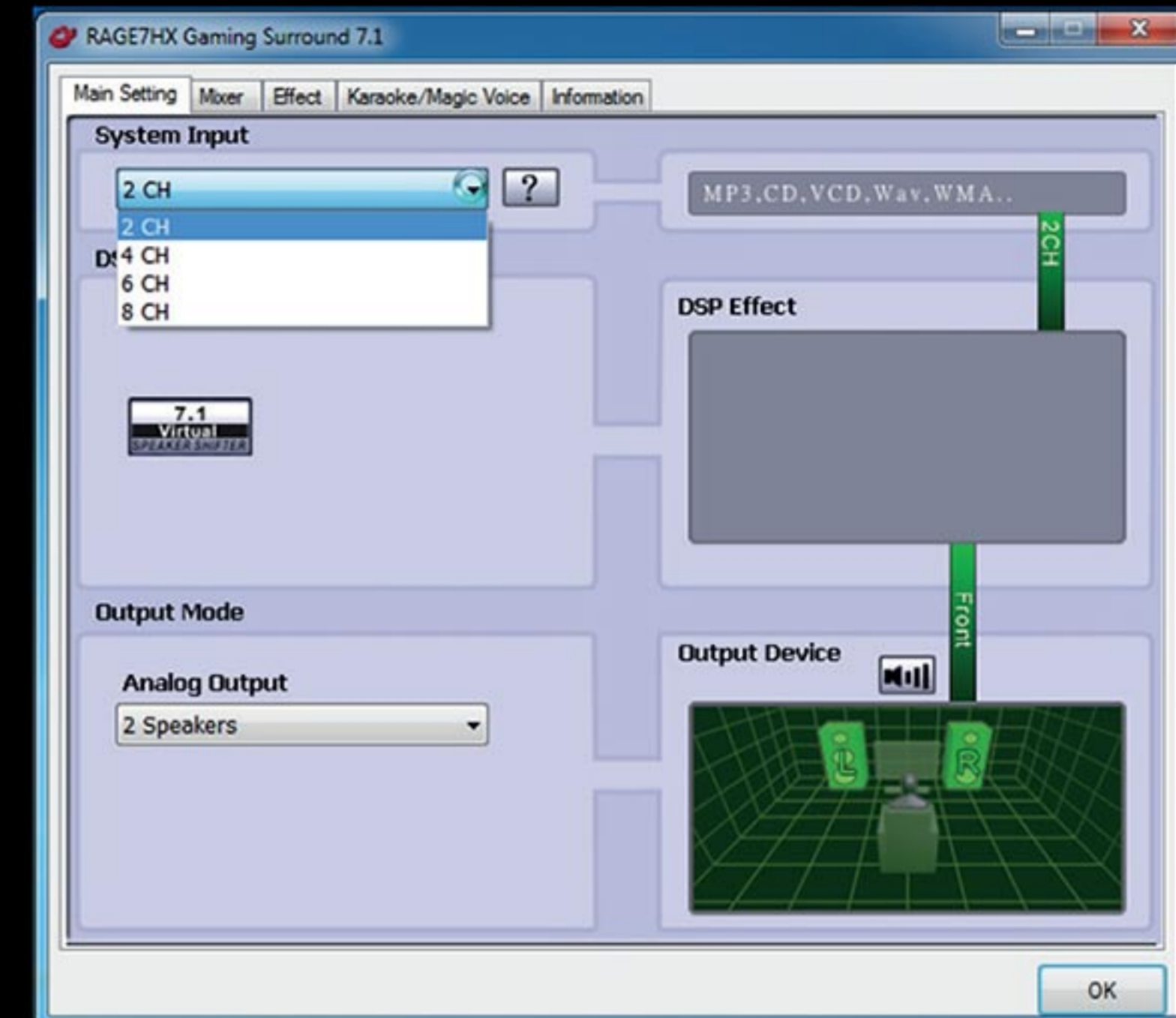
(2) DSP mode & setting effect button

(3) Output mode, click combobox, you have earphones and 2 speakers for your choices.

(4) Output device testing area, click any speaker to have sound come from the corresponding one.

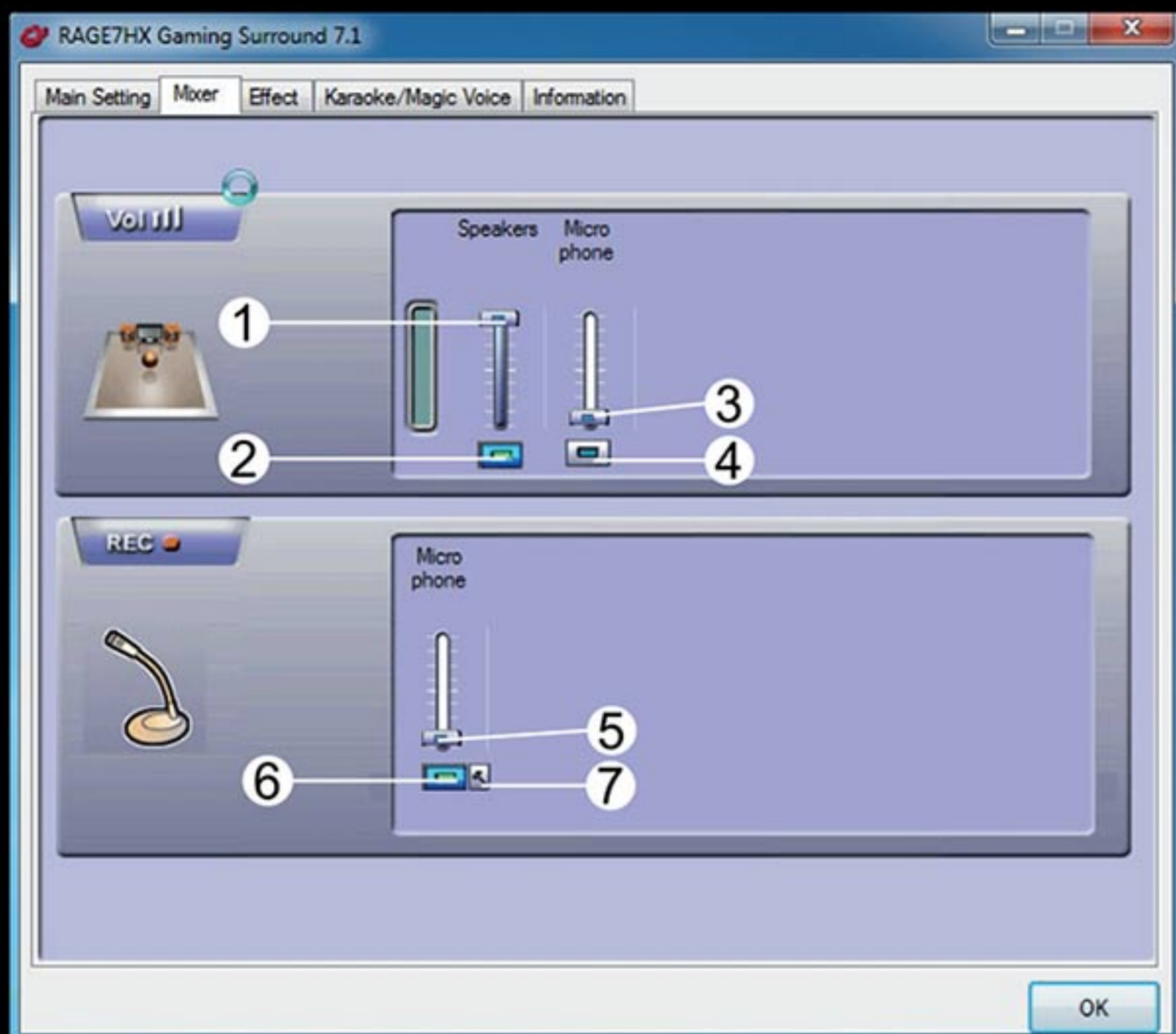


( pic 22 )



( pic 24 )

3. Mixer, supply volume control or mute control



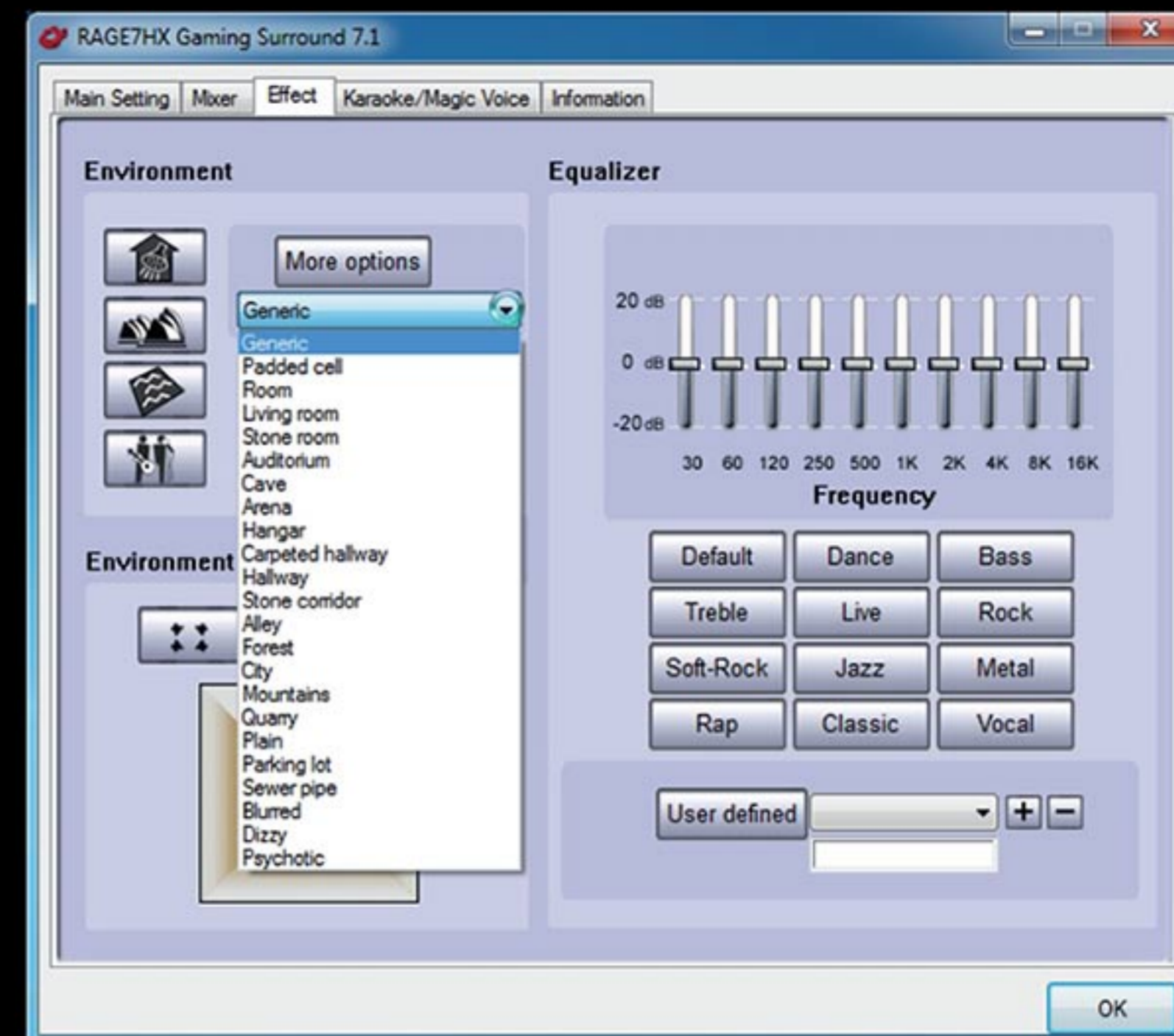
( pic 25 )

- 1) Volume control
- 2) Volume switch
- 3) Microphone volume
- 4) Microphone switch
- 5) Microphone recording volume control
- 6) Microphone recording switch
- 7) Microphone enhance setting

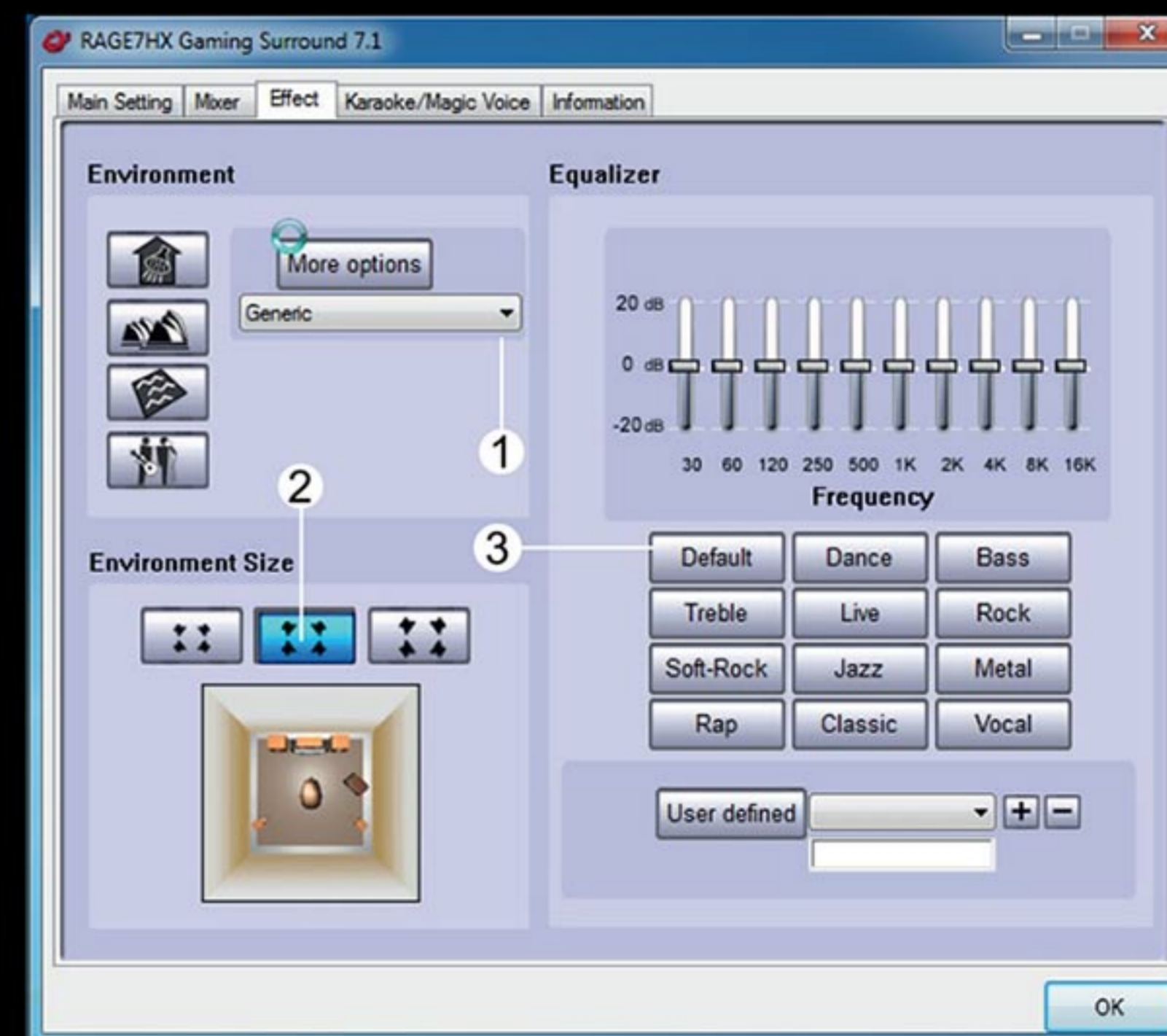
4. Effects, please refers- to pic 17~18, this interface is seperated as follows:

- (1) Enviroment: they are general, ward, living room ect you have 23 choices.
- (2) Space choices: large, middle, small.
- (3) Equalizer : Default, Dance, Bass ect 12 choices for your consideration.

( Remark: For more function specifications please refers to page 6 )



( pic 26 )



( pic 27 )

## 5. Karaoke/ magic sound

(1) Turn on - Adjust/turn off Microphone Mixer

(2) Turn on - Adjust/ turn off tone control

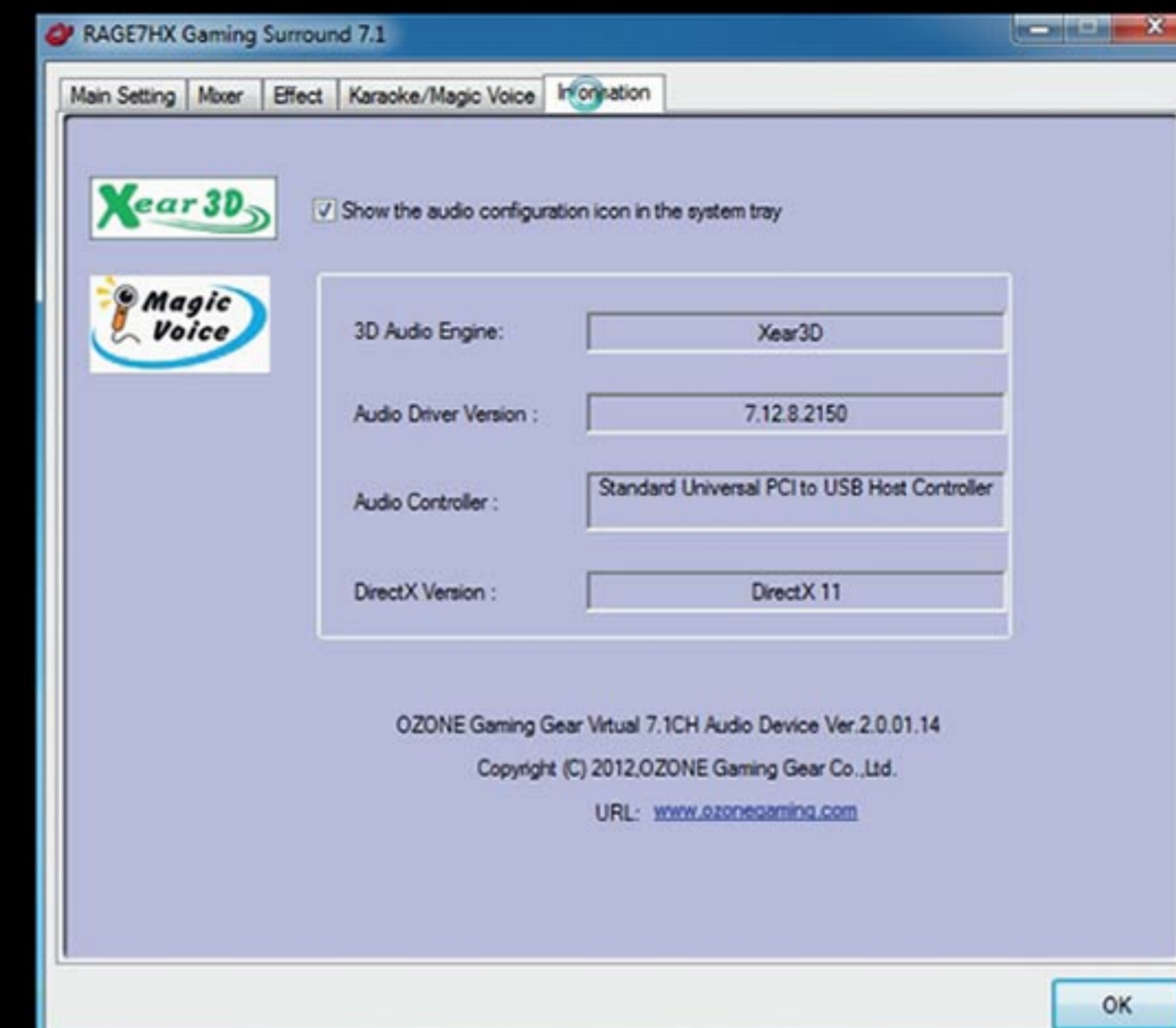
(3) Turn on - Adjust/ turn off cancel song

(For more function specifications please refers to page 7, 8)



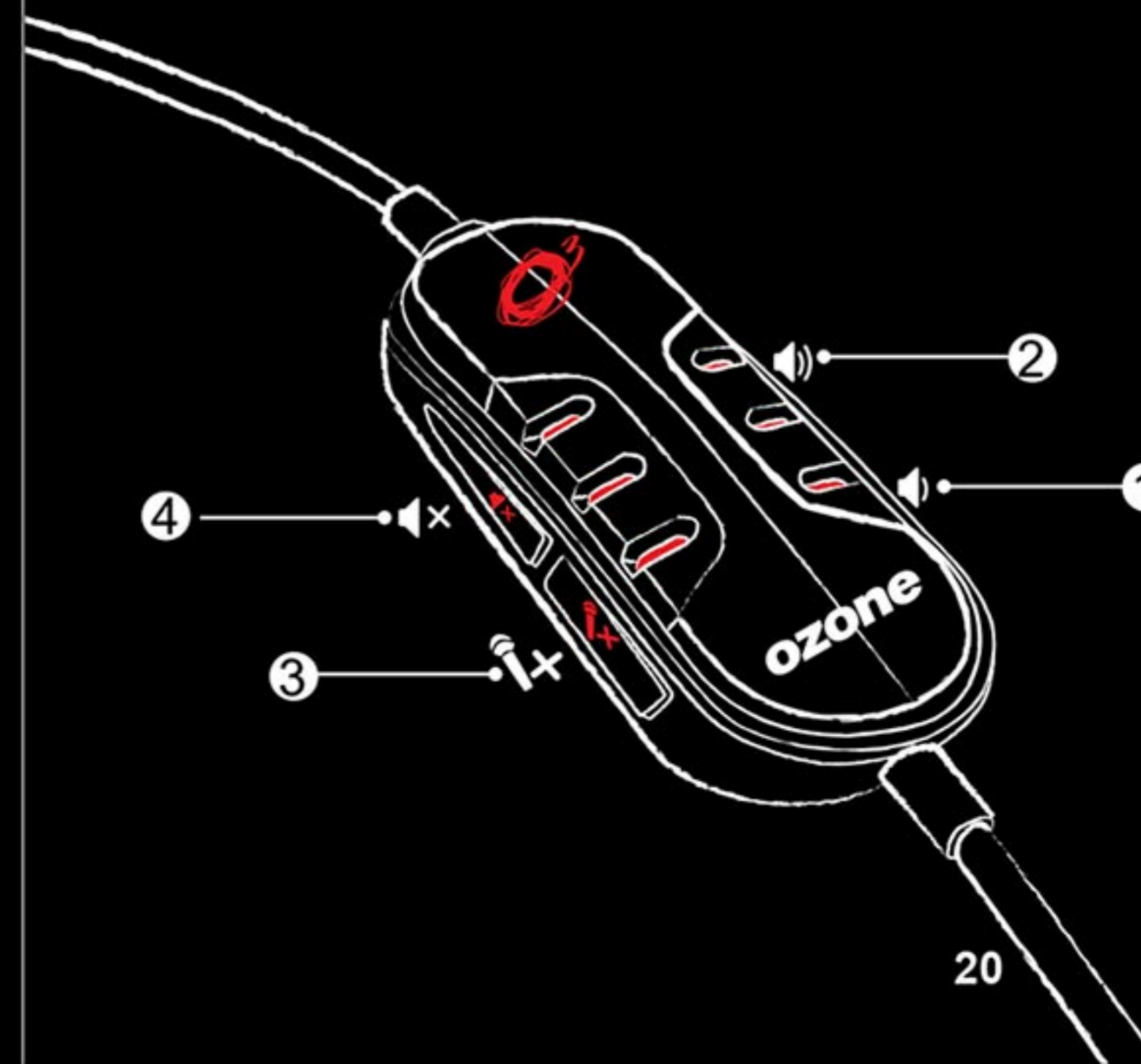
( pic 28 )

## 6. Information of VGA Chipset & Driver version



( pic 28 )

## In-Line Controller Buttons



- 1). Volume down
- 2). Voluem up
- 3). Microphone On/Mute
- 4). All mute/ cancel all mute
- 5). Alveolate power indicator

Specification

Microphone

Dimensions ..... Φ6.0×5.0mm  
Sensitivity ..... -38dB(at 1KHz)  
Directivity ..... Omni-directional  
Impedance ..... 2.2KΩ

Speaker

Diameter ..... Ø40mm  
Sensitivity ..... 99dB(At1.0 kHz)  
Impedance ..... 32Ω  
Frequency Response ..... 20Hz~20KHz

Cable Length ..... 2.9M  
Plug ..... USB  
Net Weight ..... 344g

Accessories List

- |                |       |
|----------------|-------|
| 1. Headset     | 1 pc  |
| 2. Driver Disk | 1 pc  |
| 3. User Manual | 1 pc  |
| 4. Quick Guide | 1 pc  |
| 5. Package Box | 1 set |

If you have any questions regarding technical problems please contact us via our website:

[www.ozonegaming.com](http://www.ozonegaming.com)

**WARNING:**

Adjust headset to a proper volume. Loud volume may damage your ears. For your traffic safety, please do not use the headset while riding a bike, motor bike or while driving a car.

OZONE reserves the right for any modifications in text and/or images.



**ozone**  
GAMING GEAR

*it's all about evolution*

[www.ozonegaming.com](http://www.ozonegaming.com)