



TEST REPORT

LAB NO. : (8823)075-0069
 DATE : APR 15, 2023
 PAGE : 1 OF 17

Applicant Name: Foshan Gongjiang Electric Appliance Technology Co., Ltd.

Applicant Address: No.17, Changbao West Road, Rongli Neighborhood Committee, Ronggui Street Shunde District, Foshan City, Guangdong Province, China

Date of Submission: MAR 16, 2023

Test Period: MAR 16, 2023 TO APR 15, 2023

Sample Description: Slicer (Slicing Machine)
 1.GJ803 2.GJ811 3.GJ821

Manufacturer : Foshan Gongjiang Electric Appliance Technology Co., Ltd. **Style No. :** GJ801, GJ831, GJ851, GJ861, GJ871, GJ803, GJ811, GJ821, GJ813, GJ823, GJ833, GJ853

Manufacturer Address : No.17, Changbao West Road, Rongli Neighborhood Committee, Ronggui Street Shunde District, Foshan City, Guangdong Province, China

Samples Size: 3 **Country of origin:** China



BUREAU VERITAS SHENZHEN CO.,LTD
 DONGGUAN BRANCH

Lisa Bai
 Analytical lab Senior Supervisor

RT/Icy

REMARK

If there are questions or concerns on this report, please contact the following persons:

Report Enquiry: (86) 0769 89952999 Ext. 8175 CPSAnalytical.DG@bureauveritas.com

Business Contact: (86) 0769 85893595

This report shall not be reproduced except in full, without the written approval of our laboratory.



LAB NO. : (8823)075-0069
DATE : APR 15, 2023
PAGE : 2 OF 17

SUMMARY OF TEST RESULTS

TEST REQUESTED	CONCLUSION	REMARK
European Parliament and Council Directive 2011/65/EU on the Restriction of the Use of Certain Hazardous Substances in Electrical and Electronic Equipment (RoHS) with its Amendment Directive (EU)2015/863	PASS	-

Photo of the Submitted Sample

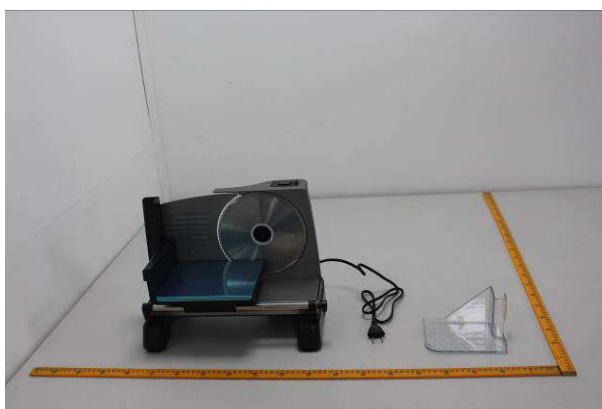


Photo of Test Item(s)

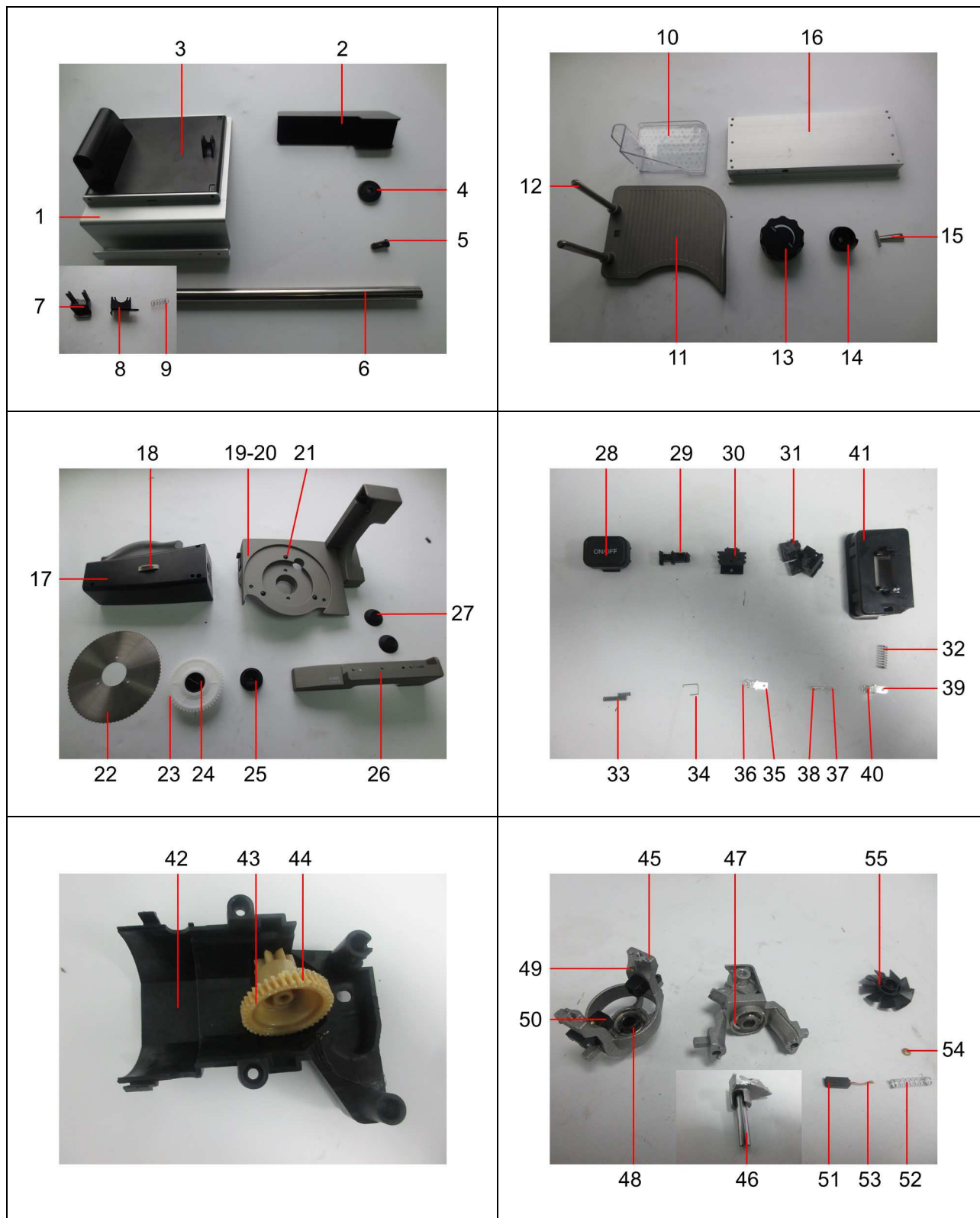


Photo of Test Item(s)

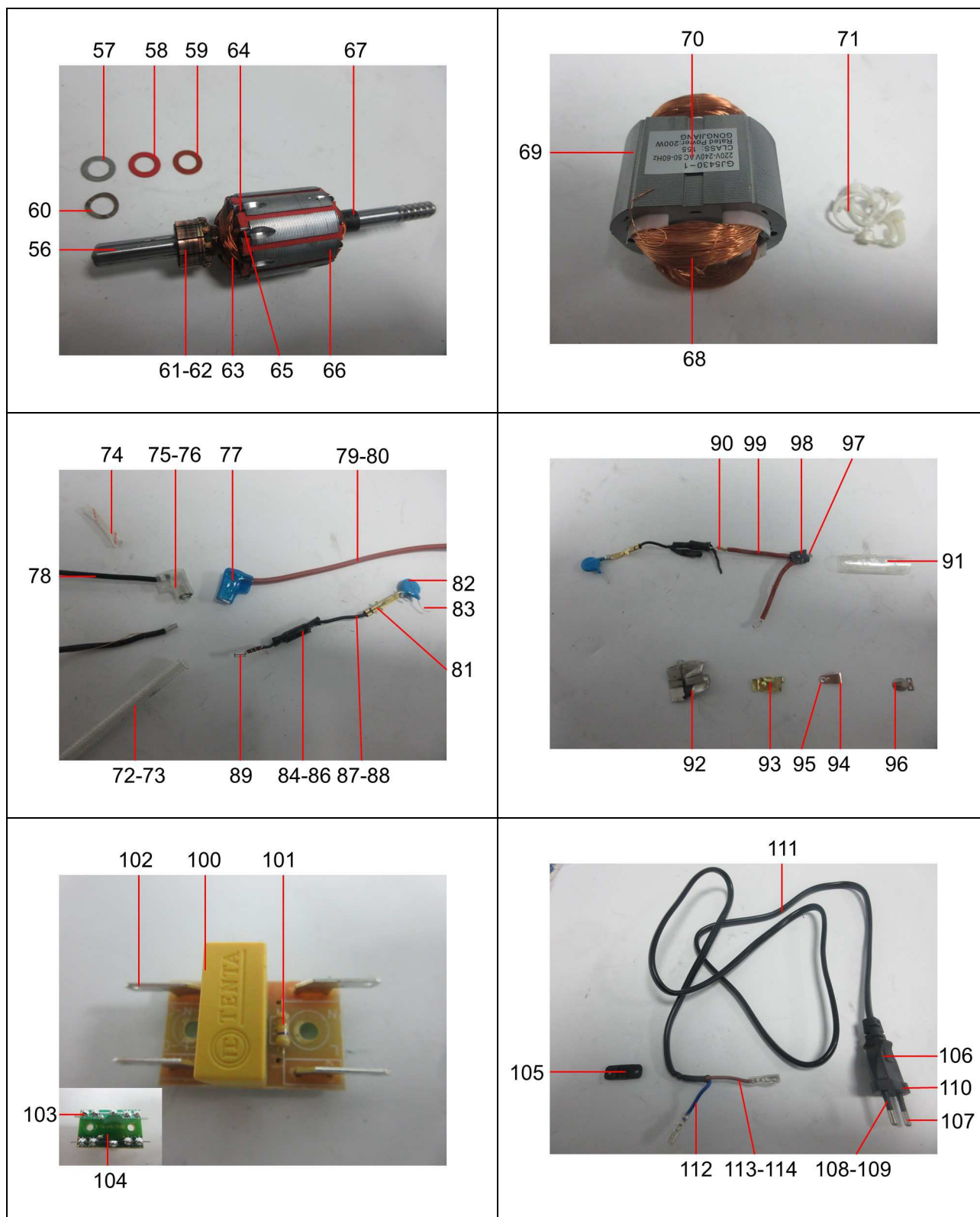
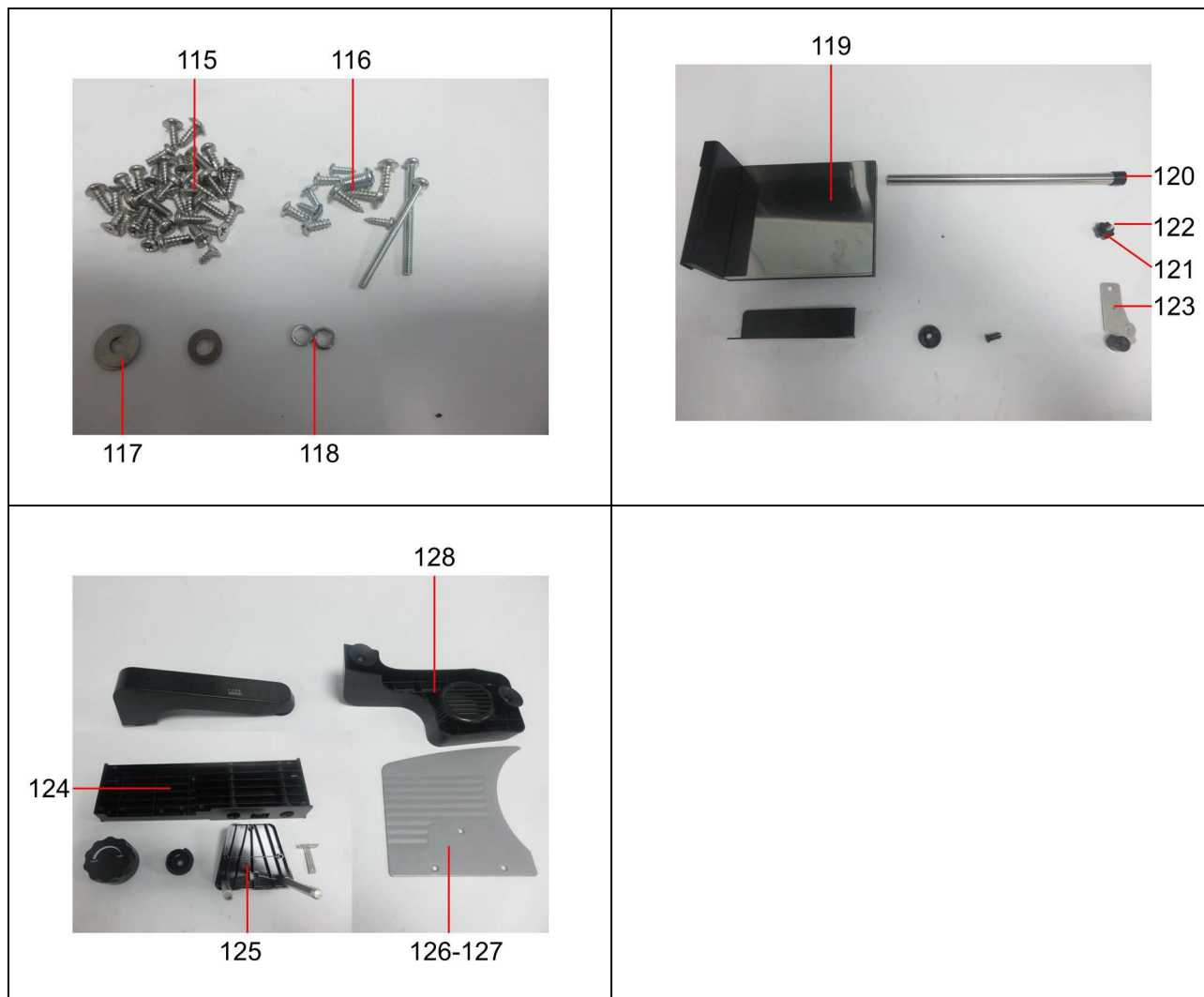


Photo of Test Item(s)



Component Description List

Test Item(s)	Component Description(s)	Location	Style(s)
1	Silvery metal	Tray, slicer	1
2	Black plastic	Holder, tray, slicer	1,2,3
3	Black plastic	Base, tray, slicer	1,2,3
4	Black plastic	Wheel, tray, slicer	1,2,3
5	Black plastic	Shaft, tray, slicer	1,2,3
6	Silvery metal	Tube, tray, slicer	1,2,3
7	Black plastic	Holder, tube, tray, slicer	1
8	Black plastic	Holder, tube, tray, slicer	1
9	Silvery metal	Spring, holder, tube, tray, slicer	1
10	Transparent plastic	Cover, tube, tray, slicer	1,2,3
11	Dark silvery metal	Plate, adjuster, slicer	1
12	Silvery metal	Shaft, plate, adjuster, slicer	1,2,3
13	White coated black plastic	Button, adjuster, slicer	1,2,3
14	Black plastic	Holder, button, adjuster, slicer	1,2,3
15	Silvery metal	Holder, adjuster, slicer	1,2,3
16	Silvery metal	Bearing plate, slicer	1
17	Black plastic	Housing, slicer	1,2,3
18	Gray soft plastic	Handle, slicer	1,2,3
19	Gray coating	Coating, holder, blade, slicer	1,2,3
20	Silvery metal	Holder, blade, slicer	1,2,3
21	Black plastic	Holder, holder, blade, slicer	1,2,3
22	Silvery metal	Blade, slicer	1,2,3
23	White plastic	Gear, blade, slicer	1,2,3
24	Black plastic	Core, gear, blade, slicer	1,2,3
25	Black plastic	Holder, gear, blade, slicer	1,2,3
26	Gray/white plated silvery metal	Foot, slicer	1
27	Black soft plastic	Gasket, foot, slicer	1,2,3
28	White printed black plastic	Cover, button, switch, slicer	1,2,3
29	Black plastic	Button, switch, slicer	1,2,3
30	Black plastic	Holder, switch, slicer	1,2,3
31	Black plastic	Holder, switch, slicer	1,2,3
32	Silvery metal	Spring, switch, slicer	1,2,3
33	Black plated silvery metal	Spring, switch, slicer	1,2,3
34	Silvery metal	Spring, switch, slicer	1,2,3
35	Silvery metal	Contact plate, switch, slicer	1,2,3
36	Silvery/coppery metal	Point, contact plate, switch, slicer	1,2,3
37	Silvery metal	Contact plate, switch, slicer	1,2,3
38	Silvery/coppery metal	Point, contact plate, switch, slicer	1,2,3
39	Silvery metal	Contact plate, switch, slicer	1,2,3
40	Silvery metal	Point, contact plate, switch, slicer	1,2,3

Test Item(s)	Component Description(s)	Location	Style(s)
41	Black plastic	Holder, switch, slicer	1,2,3
42	Black plastic	Holder, motor, slicer, slicer	1,2,3
43	Beige plastic	Gear, motor, slicer, slicer	1,2,3
44	Transparent oil	Oil, gear, motor, slicer, slicer	1,2,3
45	Dark silvery metal	Terminal, motor, slicer, slicer	1,2,3
46	Silvery metal	Shaft, terminal, motor, slicer, slicer	1,2,3
47	Silvery metal	Holder, terminal, motor, slicer, slicer	1,2,3
48	Dark silvery metal	Bearing, terminal, motor, slicer, slicer	1,2,3
49	Golden metal	Holder, terminal, motor, slicer, slicer	1,2,3
50	Black plastic	Holder, brush, terminal, motor, slicer, slicer	1,2,3
51	Black carbon	Carbon, brush, terminal, motor, slicer, slicer	1,2,3
52	Silvery metal	Spring, brush, terminal, motor, slicer, slicer	1,2,3
53	Coppery metal	Wire, brush, terminal, motor, slicer, slicer	1,2,3
54	Golden metal	Base, brush, terminal, motor, slicer, slicer	1,2,3
55	Black plastic	Flabellum, motor, slicer, slicer	1,2,3
56	Silvery metal	Shaft, motor, slicer, slicer	1,2,3
57	Silvery metal	Ring, shaft, motor, slicer, slicer	1,2,3
58	Red paper	Ring, shaft, motor, slicer, slicer	1,2,3
59	Brown plastic	Ring, shaft, motor, slicer	1,2,3
60	Coppery metal	Ring, shaft, motor, slicer	1,2,3
61	Coppery metal	Connector, motor, slicer	1,2,3
62	Black ceramic	Ring, shaft, motor, slicer	1,2,3
63	Dark coppery metal	Coil, motor, slicer	1,2,3
64	Black plastic	Insulator, motor, slicer	1,2,3
65	White plastic	Insulator, motor, slicer	1,2,3
66	Silvery metal	Plate, motor, slicer	1,2,3
67	Black plastic	Ring, shaft, motor, slicer	1,2,3
68	Coppery metal	Coil, motor, slicer	1,2,3
69	Silvery metal	Plate, motor, slicer	1,2,3
70	Black printed silvery plastic	Sticker, plate, motor, slicer	1,2,3
71	White plastic	Buckle, cable, motor, slicer	1,2,3
72	White fabric	Sleeve, cable, motor, slicer	1,2,3
73	White soft plastic	Sleeve, cable, motor, slicer	1,2,3
74	Red printed white soft plastic	Sleeve, cable, motor, slicer	1,2,3
75	Transparent soft plastic	Cover, contact plate, cable, motor, slicer	1,2,3
76	Silvery metal	Contact plate, cable, motor, slicer	1,2,3
77	Blue/transparent soft plastic	Cover, contact plate, cable, motor, slicer	1,2,3
78	Black soft plastic	Wire insulation, cable, motor, slicer	1,2,3

Test Item(s)	Component Description(s)	Location	Style(s)
79	Black printed brown soft plastic	Wire insulation, cable, motor, slicer	1,2,3
80	Silvery metal	Wire, cable, motor, slicer	1,2,3
81	Golden metal	Contact plate, cable, motor, slicer	1,2,3
82	Black printed blue body	Ceramic capacitor, contact plate, cable, motor, slicer	1,2,3
83	Silvery metal	Pin, ceramic capacitor, contact plate, cable, motor, slicer	1,2,3
84	Black soft plastic	Sleeve, LTPC Choke Coil, cable, motor, slicer	1,2,3
85	Black metal	LTPC Choke Coil, cable, motor, slicer	1,2,3
86	Coppery metal	Coil, LTPC Choke Coil, cable, motor, slicer	1,2,3
87	Black soft plastic	Sleeve, pin, LTPC Choke Coil, cable, motor, slicer	1,2,3
88	Silvery metal	Pin, LTPC Choke Coil, cable, motor, slicer	1,2,3
89	Silvery metal	Holder, cable, motor, slicer	1,2,3
90	Silvery solder	Solder, cable, motor, slicer	1,2,3
91	Transparent plastic	Sleeve, thermal protector, slicer	1,2,3
92	Silvery metal	Cover, thermal protector, slicer	1,2,3
93	Golden metal	Contact plate, thermal protector, slicer	1,2,3
94	Silvery metal	Contact plate, thermal protector, slicer	1,2,3
95	Silvery/coppery metal	Point, contact plate, thermal protector, slicer	1,2,3
96	Silvery metal	Contact plate, thermal protector, slicer	1,2,3
97	Coppery metal	Contact plate, thermal protector, slicer	1,2,3
98	Black plastic	Base, thermal protector, slicer	1,2,3
99	Gray printed brown soft plastic	Wire insulation, cable, thermal protector, slicer	1,2,3
100	Yellow body	Capacitor, PCB, slicer	1,2,3
101	Multi-color printed brown body	Resistor, PCB, slicer	1,2,3
102	Silvery metal	Pin, PCB, slicer	1,2,3
103	Silvery solder	Solder, PCB, slicer	1,2,3
104	Green PCB	PCB, slicer	1,2,3
105	Black plastic	Holder, cable, slicer	1,2,3
106	Black soft plastic	Cover, AC plug, cable, slicer	1,2,3
107	Silvery metal	Pin, AC plug, cable, slicer	1,2,3
108	Black plastic	Sleeve, pin, AC plug, cable, slicer	1,2,3
109	Silvery metal	Shaft, AC plug, cable, slicer	1,2,3
110	Black plastic	Pin holder, AC plug, cable, slicer	1,2,3
111	Black soft plastic	wire jacket, cable, slicer	1,2,3
112	Black soft plastic	Wire insulation, cable, slicer	1,2,3
113	Brown soft plastic	Wire insulation, cable, slicer	1,2,3
114	Coppery metal	Wire, cable, slicer	1,2,3
115	Silvery metal	Screw, slicer	1,2,3



LAB NO. : (8823)075-0069
DATE : APR 15, 2023
PAGE : 10 OF 17

Test Item(s)	Component Description(s)	Location	Style(s)
116	Bright silvery metal	Screw, slicer	1,2,3
117	Silvery metal	Ring, screw, slicer	1,2,3
118	Silvery metal	Ring, screw, slicer	1,2,3
119	Silvery metal	Cover, tray, slicer	2,3
120	Black plastic	Cover, tube, tray, slicer	2,3
121	Black plastic	Cover, screw, tray, slicer	2,3
122	Silvery metal	Screw, tray, slicer	2,3
123	Silvery metal	Holder, tray, slicer	2,3
124	Black plastic	Bearing plate, slicer	2,3
125	Black plastic	Board, adjuster, slicer	2,3
126	Silvery/gray coating	Coating, plate, adjuster, slicer	2,3
127	Silvery metal	Plate, adjuster, slicer	2,3
128	Black plastic	Foot, slicer	2,3



LAB NO.
DATE
PAGE

: (8823)075-0069
: APR 15, 2023
: 11 OF 17

TEST RESULT

Compliance Test – European Parliament and Council Directive 2011/65/EU on the Restriction of the Use of Certain Hazardous Substances in Electrical and Electronic Equipment (RoHS) with its Amendment Directive (EU)2015/863

Test Method : See Appendix.

-	Result (s)									
Parameter	Lead (Pb)	Mercury (Hg)	Cadmium (Cd)	Chromium VI (Cr VI)	PBBs & PBDEs	BBP	DBP	DEHP	DIBP	Conclusion
Unit	mg/kg									
Test Item(s)	-	-	-	-	-	-	-	-	-	-
1	BL	BL	BL	BL	NA	NA	NA	NA	NA	PASS
2	BL	BL	BL	BL	BL*	BL*	BL*	BL*	BL*	PASS
3	BL	BL	BL	BL	BL*	BL*	BL*	BL*	BL*	PASS
4	BL	BL	BL	BL	BL	BL*	BL*	BL*	BL*	PASS
5	BL	BL	BL	BL	BL	BL*	BL*	BL*	BL*	PASS
6	BL	BL	BL	Negative*	NA	NA	NA	NA	NA	PASS
7	BL	BL	BL	BL	BL	BL*	BL*	BL*	BL*	PASS
8	BL	BL	BL	BL	BL	BL*	BL*	BL*	BL*	PASS
9	BL	BL	BL	Negative*	NA	NA	NA	NA	NA	PASS
10	BL	BL	BL	BL	BL	BL*	BL*	BL*	BL*	PASS
11	370*	BL	BL	BL	NA	NA	NA	NA	NA	PASS
12	BL	BL	BL	BL	NA	NA	NA	NA	NA	PASS
13	BL	BL	BL	BL	BL*	BL*	BL*	BL*	BL*	PASS
14	BL	BL	BL	BL	BL	BL*	BL*	BL*	BL*	PASS
15	BL	BL	BL	Negative*	NA	NA	NA	NA	NA	PASS
16	BL	BL	BL	BL	NA	NA	NA	NA	NA	PASS
17	BL	BL	BL	BL	BL*	BL*	BL*	BL*	BL*	PASS
18	BL	BL	BL	BL	BL	BL*	BL*	BL*	BL*	PASS
19	BL	BL	BL	BL	BL	BL*	BL*	BL*	BL*	PASS
20	360*	BL	BL	BL	NA	NA	NA	NA	NA	PASS
21	BL	BL	BL	BL	BL	BL*	BL*	BL*	BL*	PASS
22	BL	BL	BL	Negative*	NA	NA	NA	NA	NA	PASS
23	BL	BL	BL	BL	BL	BL*	BL*	BL*	BL*	PASS
24	BL	BL	BL	BL	BL	BL*	BL*	BL*	BL*	PASS
25	BL	BL	BL	BL	BL*	BL*	BL*	BL*	BL*	PASS
26	290*	BL	BL	BL	NA	NA	NA	NA	NA	PASS
27	BL	BL	BL	BL	BL	BL*	BL*	BL*	BL*	PASS
28	BL	BL	BL	BL	BL	BL*	BL*	BL*	BL*	PASS



LAB NO.
DATE
PAGE

: (8823)075-0069
: APR 15, 2023
: 12 OF 17

TEST RESULT

-	Result (s)									
Parameter	Lead (Pb)	Mercury (Hg)	Cadmium (Cd)	Chromium VI (Cr VI)	PBBs & PBDEs	BBP	DBP	DEHP	DIBP	Conclusion
Unit	mg/kg									-
Test Item(s)	-	-	-	-	-	-	-	-	-	-
29	BL	BL	BL	BL	BL*	BL*	BL*	BL*	BL*	PASS
30	BL	BL	BL	BL	BL*	BL*	BL*	BL*	BL*	PASS
31	BL	BL	BL	BL	BL*	BL*	BL*	BL*	BL*	PASS
32	BL	BL	BL	Negative*	NA	NA	NA	NA	NA	PASS
33	BL	BL	BL	BL	NA	NA	NA	NA	NA	PASS
34	BL	BL	BL	Negative*	NA	NA	NA	NA	NA	PASS
35	BL	BL	BL	BL	NA	NA	NA	NA	NA	PASS
36	BL	BL	BL	BL	NA	NA	NA	NA	NA	PASS
37	BL	BL	BL	BL	NA	NA	NA	NA	NA	PASS
38	BL	BL	BL	BL	NA	NA	NA	NA	NA	PASS
39	BL	BL	BL	BL	NA	NA	NA	NA	NA	PASS
40	BL	BL	BL	BL	NA	NA	NA	NA	NA	PASS
41	BL	BL	BL	BL	BL*	BL*	BL*	BL*	BL*	PASS
42	BL	BL	BL	BL	BL	BL*	BL*	BL*	BL*	PASS
43	BL	BL	BL	BL	BL	BL*	BL*	BL*	BL*	PASS
44	BL	BL	BL	BL	BL	BL*	BL*	BL*	BL*	PASS
45	370*	BL	BL	BL	NA	NA	NA	NA	NA	PASS
46	BL	BL	BL	BL	NA	NA	NA	NA	NA	PASS
47	BL	BL	BL	Negative*	NA	NA	NA	NA	NA	PASS
48	BL	BL	BL	BL	NA	NA	NA	NA	NA	PASS
49	BL	BL	BL	BL	NA	NA	NA	NA	NA	PASS
50	BL	BL	BL	BL	BL	BL*	BL*	BL*	BL*	PASS
51	BL	BL	BL	BL	BL	BL*	BL*	BL*	BL*	PASS
52	BL	BL	BL	BL	NA	NA	NA	NA	NA	PASS
53	BL	BL	BL	BL	NA	NA	NA	NA	NA	PASS
54	BL	BL	BL	BL	NA	NA	NA	NA	NA	PASS
55	BL	BL	BL	BL	BL	BL*	BL*	BL*	BL*	PASS
56	BL	BL	BL	Negative*	NA	NA	NA	NA	NA	PASS
57	BL	BL	BL	Negative*	NA	NA	NA	NA	NA	PASS
58	BL	BL	BL	BL	BL	NA	NA	NA	NA	PASS
59	BL	BL	BL	BL	BL	BL*	BL*	BL*	BL*	PASS
60	BL	BL	BL	Negative*	NA	NA	NA	NA	NA	PASS
61	BL	BL	BL	BL	NA	NA	NA	NA	NA	PASS
62	BL	BL	BL	BL	BL	BL*	BL*	BL*	BL*	PASS
63	BL	BL	BL	BL	NA	NA	NA	NA	NA	PASS



LAB NO.
DATE
PAGE

: (8823)075-0069
: APR 15, 2023
: 13 OF 17

TEST RESULT

-	Result (s)									
Parameter	Lead (Pb)	Mercury (Hg)	Cadmium (Cd)	Chromium VI (Cr VI)	PBBs & PBDEs	BBP	DBP	DEHP	DIBP	Conclusion
Unit	mg/kg									-
Test Item(s)	-	-	-	-	-	-	-	-	-	-
64	BL	BL	BL	BL	BL*	BL*	BL*	BL*	BL*	PASS
65	BL	BL	BL	BL	BL	BL*	BL*	BL*	BL*	PASS
66	BL	BL	BL	BL	NA	NA	NA	NA	NA	PASS
67	BL	BL	BL	BL	BL*	BL*	BL*	BL*	BL*	PASS
68	BL	BL	BL	BL	NA	NA	NA	NA	NA	PASS
69	BL	BL	BL	BL	NA	NA	NA	NA	NA	PASS
70	BL	BL	BL	BL	BL	BL*	BL*	150*	BL*	PASS
71	BL	BL	BL	BL	BL	BL*	BL*	BL*	BL*	PASS
72	BL	BL	BL	BL	BL	NA	NA	NA	NA	PASS
73	BL	BL	BL	BL	BL	BL*	BL*	BL*	BL*	PASS
74	BL	BL	BL	BL	BL	BL*	BL*	BL*	BL*	PASS
75	BL	BL	BL	BL	BL	BL*	BL*	BL*	BL*	PASS
76	BL	BL	BL	BL	NA	NA	NA	NA	NA	PASS
77	BL	BL	BL	BL	BL	BL*	BL*	BL*	BL*	PASS
78	BL	BL	BL	BL	BL	BL*	BL*	BL*	BL*	PASS
79	BL	BL	BL	BL	BL	BL*	BL*	BL*	BL*	PASS
80	BL	BL	BL	BL	NA	NA	NA	NA	NA	PASS
81	BL	BL	BL	BL	NA	NA	NA	NA	NA	PASS
82	BL	BL	BL	BL	BL*	BL*	BL*	BL*	BL*	PASS
83	BL	BL	BL	BL	NA	NA	NA	NA	NA	PASS
84	BL	BL	BL	BL	BL	BL*	BL*	BL*	BL*	PASS
85	BL	BL	BL	BL	NA	NA	NA	NA	NA	PASS
86	BL	BL	BL	BL	NA	NA	NA	NA	NA	PASS
87	BL	BL	BL	BL	BL	BL*	BL*	BL*	BL*	PASS
88	BL	BL	BL	BL	NA	NA	NA	NA	NA	PASS
89	BL	BL	BL	BL	NA	NA	NA	NA	NA	PASS
90	BL	BL	BL	BL	NA	NA	NA	NA	NA	PASS
91	BL	BL	BL	BL	BL	BL*	BL*	BL*	BL*	PASS
92	BL	BL	BL	BL	NA	NA	NA	NA	NA	PASS
93	BL	BL	BL	BL	NA	NA	NA	NA	NA	PASS
94	BL	BL	BL	BL	NA	NA	NA	NA	NA	PASS
95	BL	BL	BL	BL	NA	NA	NA	NA	NA	PASS
96	BL	BL	BL	BL	NA	NA	NA	NA	NA	PASS
97	BL	BL	BL	BL	NA	NA	NA	NA	NA	PASS
98	BL	BL	BL	BL	BL	BL*	BL*	BL*	BL*	PASS

TEST RESULT

-	Result (s)									
Parameter	Lead (Pb)	Mercury (Hg)	Cadmium (Cd)	Chromium VI (Cr VI)	PBBs & PBDEs	BBP	DBP	DEHP	DIBP	Conclusion
Unit	mg/kg									-
Test Item(s)	-	-	-	-	-	-	-	-	-	-
99	BL	BL	BL	BL	BL	BL*	BL*	BL*	BL*	PASS
100	BL	BL	BL	BL	BL*	BL*	BL*	BL*	BL*	PASS
101	BL	BL	BL	BL	NA	NA	NA	NA	NA	PASS
102	16550*	BL	BL	BL	NA	NA	NA	NA	NA	EXEMPTED#
103	>1300	BL	BL	BL	NA	NA	NA	NA	NA	FAIL
104	BL	BL	BL	BL	BL*	BL*	BL*	BL*	BL*	PASS
105	BL	BL	BL	BL	BL	BL*	BL*	BL*	BL*	PASS
106	BL	BL	BL	BL	BL	BL*	BL*	BL*	BL*	PASS
107	19860*	BL	BL	BL	NA	NA	NA	NA	NA	EXEMPTED#
108	BL	BL	BL	BL	BL*	BL*	BL*	BL*	BL*	PASS
109	19480*	BL	BL	BL	NA	NA	NA	NA	NA	EXEMPTED#
110	BL	BL	BL	BL	BL*	BL*	BL*	BL*	BL*	PASS
111	BL	BL	BL	BL	BL	BL*	BL*	BL*	BL*	PASS
112	BL	BL	BL	BL	BL	BL*	BL*	BL*	BL*	PASS
113	BL	BL	BL	BL	BL	BL*	BL*	BL*	BL*	PASS
114	BL	BL	BL	BL	NA	NA	NA	NA	NA	PASS
115	BL	BL	BL	Negative*	NA	NA	NA	NA	NA	PASS
116	BL	BL	BL	BL	NA	NA	NA	NA	NA	PASS
117	BL	BL	BL	Negative*	NA	NA	NA	NA	NA	PASS
118	BL	BL	BL	Negative*	NA	NA	NA	NA	NA	PASS
119	BL	BL	BL	Negative*	NA	NA	NA	NA	NA	PASS
120	BL	BL	BL	BL	BL	BL*	BL*	BL*	BL*	PASS
121	BL	BL	BL	BL	BL	BL*	BL*	BL*	BL*	PASS
122	BL	BL	BL	BL	NA	NA	NA	NA	NA	PASS
123	BL	BL	BL	Negative*	NA	NA	NA	NA	NA	PASS
124	BL	BL	BL	BL	BL	BL*	BL*	BL*	BL*	PASS
125	BL	BL	BL	BL	BL	BL*	BL*	BL*	BL*	PASS
126	BL	BL	BL	BL	BL	BL*	BL*	BL*	BL*	PASS
127	BL	BL	BL	BL	NA	NA	NA	NA	NA	PASS
128	BL	BL	BL	BL	BL	BL*	BL*	BL*	BL*	PASS

Note / Key:

BL = Below limit

OL = Over limit

ND = Not detected

NA = Not applicable

mg/kg = milligram(s) per kilogram = ppm = part(s) per million

Detection Limit : See Appendix.



LAB NO. : (8823)075-0069
DATE : APR 15, 2023
PAGE : 15 OF 17

Remark:

- *Denotes as reported result(s) was (were) performed by wet chemistry method. Others were screened by XRF. For XRF screening, the result(s) of Cr VI was (were) reported as total chromium and the result(s) of PBBs and PBDEs was (were) reported as total bromine. Also, the XRF result(s) may be different to the actual content based on various factors including, but not limit to, sample size, thickness, area, non-uniformity composition, surface flatness.
- *Result(s) of Cr VI for metallic material(s) was (were) expressed in term of positive and negative. Negative means the absence of Cr VI on the tested areas and the result(s) was (were) regarded as in compliance with European Council Directive 2011/65/EU, Article 4(1). While, positive means the presence of Cr VI on tested areas and the result(s) was (were) regarded as in conflict with European Council Directive 2011/65/EU, Article 4(1).
- According to European Council Directive 2011/65/EU, Article 5 “Adaptation of the Annexes to scientific and technical progress”, exemption(s) should be granted to the materials and components of Test Item(s) in the lists in Annexes III and IV of this directive.
- #According to Annex III of European Council Directive 2011/65/EU, exemptions were granted a few materials and Clause 6(c) is reiterated here “Copper alloy containing up to 4 % lead by weight”. Test Item(s) 102,107,109 were claimed as is by client (received as is). Therefore, this (these) Test Item(s) containing the found lead level should be exempted.
- The items 103 was resubmitted by client dated on Apr 10, 2023.

APPENDIX

List of Analytes and their Corresponding Test Methods, Detection Limit and Maximum Allowable Limit [Compliance Test for European Parliament and Council Directive 2011/65/EU] :						
No.	Name of Analytes	Detection Limit(mg/kg)				Maximum Allowable Limit (mg/kg)
		X-ray fluorescence (XRF) ^[a]			Wet Chemistry	
		Plastic	Metal/Glass/ Ceramic	Others		
1	Lead (Pb)	100	200	200	10 ^[b]	1000
2	Cadmium (Cd)	50	50	50	10 ^[b]	100
3	Mercury (Hg)	100	200	200	10 ^[c]	1000
4	Chromium (Cr)	100	200	200	NA	NA
5	Chromium VI (Cr VI)	NA	NA	NA	See ^[d] /10 ^[e] /3 ^[f,g]	1000 / Negative ^[h]
6	Bromine (Br)	200	NA	200	NA	NA
7	Polybromobiphenyls (PBBs) - Bromobiphenyl (MonoBB) - Dibromobiphenyl (DiBB) - Tribromobiphenyl (TriBB) - Tetrabromobiphenyl (TetraBB) - Pentabromobiphenyl (PentaBB) - Hexabromobiphenyl (HexaBB) - Heptabromobiphenyl (HeptaBB) - Octabromobiphenyl (OctaBB) - Nonabromobiphenyl (NonaBB) - Decabromobiphenyl (DecaBB)	NA	NA	NA	Each 50 ^[i]	Sum 1000
8	Polybromodiphenyl ethers (PBDEs) - Bromodiphenyl ether (MonoBDE) - Dibromodiphenyl ether (DiBDE) - Tribromodiphenyl ether (TriBDE) - Tetrabromodiphenyl ether (TetraBDE) - Pentabromodiphenyl ether (PentaBDE) - Hexabromodiphenyl ether (HexaBDE) - Heptabromodiphenyl ether (HeptaBDE) - Octabromodiphenyl ether (OctaBDE) - Nonabromodiphenyl ether (NonaBDE) - Decabromodiphenyl ether (DecaBDE)	NA	NA	NA	Each 50 ^[i]	Sum 1000
9	- Dibutyl phthalate (DBP) - Butyl benzyl phthalate (BBP) - Di-2-ethylhexyl phthalate (DEHP) - Diisobutyl phthalate (DIBP)	NA	NA	NA	Each 50 ^[j]	Each 1000



LAB NO.

: (8823)075-0069

DATE

: APR 15, 2023

PAGE

: 17 OF 17

NA = Not applicable IEC = International Electrotechnical Commission

- [a] Test method with reference to International Standard IEC 62321-3-1: 2013.
- [b] Test method with reference to International Standard IEC 62321-5: 2013.
- [c] Test method with reference to International Standard IEC 62321-4:2013+A1:2017.
- [d] Metal - Test method with reference to International Standard IEC 62321-7-1: 2015.
- [e] Polymers and Electronics - Test method with reference to European Standard EN 62321-7-2: 2017.
- [f] Leather - Test method International Standard ISO 17075-1:2017.
- [g] Other Than Metal, Leather, Polymers and Electronics - Test method with reference to International Standard ISO 17075-1:2017.
- [h] Result(s) of Cr VI for metallic material(s) was (were) expressed in term of positive and negative. Negative means the absence of Cr VI on the tested areas and the result(s) was (were) regarded as in compliance with European Parliament and Council Directive 2011/65/EU, Article 4(1). While, positive means the presence of Cr VI on tested areas and the result(s) was (were) regarded as in conflict with European Parliament and Council Directive 2011/65/EU, Article 4(1).
- [i] Test method with reference to International Standard IEC 62321-6: 2015.
- [j] Test method with reference to International Standard IEC 62321-8: 2017.

Testing Approach [Compliance Test for European Parliament and Council Directive 2011/65/EU] :

The testing approach was with reference to the following document(s).

- 1 International Standards IEC 62321-1: 2013 and IEC 62321-2: 2021
- 2 "RoHS Enforcement Guidance Document Version 1" by EU RoHS Enforcement Authorities Informal Network. (May 2006)
- 3 "RoHS Regulations - Government Guidance Notes" by United Kingdom Department for Business Innovation & Skills. (February 2011)
- 4 "Final Report to RoHS substances (Hg, Pb, Cr(VI), Cd, PBB and PBDE) in electrical and electronic equipment in Belgium" by Belgium Federal Public Service Health, Food Chain Safety and Environment. (November 2005)

*** End of Report ***