

Canon

TS7400 series

Getting Started

Démarrage

Inbetriebnahme

Aan de Slag-gids

Guida Rapida

Para Começar

Guía de inicio

ΞΕΚΙΝΩΝΤΑΣ

Uppstartsguide

Komme i gang

Før du begynder

Aloitusopas

Read **Safety and Important Information** (addendum) first.

Commencez par lire **Sécurité et informations importantes** (addendum).

Lesen Sie **Sicherheitsinformationen und wichtige Hinweise** (Anhang) zuerst.

Lees eerst **Veiligheidsinformatie en belangrijke informatie** (addendum).

Leggere innanzitutto **Informazioni importanti e sulla sicurezza** (addendum).

Leia **Informações Importantes e Sobre Segurança** (adendo) primeiro.

Lea primero **Información de seguridad e información importante** (apéndice).

Διαβάστε πρώτα τις **Πληροφορίες για την ασφάλεια και σημαντικές πληροφορίες** (συμπλήρωμα).

Läs **Information om säkerhet och annan viktig information** (bilaga) först.

Les **Sikkerhetsinformasjon og viktig informasjon** (tillegg) først.

Læs **Sikkerhedsoplysninger og vigtige oplysninger** (tillæg) først.

Lue **Turvallisuus ja tärkeitä tietoja** (lisähuomautus) ensin.



Q T 6 3 6 3 8 V 0 1



Installing the Printer.....	page 1
Installation de l'imprimante.....	page 1
Installation des Druckers.....	Seite 1
De printer installeren.....	pagina 1
Installazione della stampante.....	pagina 1
Instalando a impressora.....	página 1
Instalación de la impresora.....	página 1
Εγκατάσταση του εκτυπωτή.....	σελίδα 1
Installera skrivaren.....	sida 1
Installere skriveren.....	side 1
Installation af printeren.....	side 1
Tulostimen asennus.....	sivu 1



Connecting to a Computer, Smartphone or Tablet.....	page 4
Connexion à un ordinateur, un smartphone ou une tablette.....	page 4
Herstellen einer Verbindung mit einem Computer, Smartphone oder Tablet.....	Seite 4
Verbinden met een computer, smartphone of tablet.....	pagina 4
Connessione a un computer, uno smartphone o un tablet.....	pagina 4
Conectando a um computador, smartphone ou tablet.....	página 4
Conexión con un ordenador, teléfono inteligente o tableta.....	página 4
Σύνδεση σε υπολογιστή, smartphone ή tablet.....	σελίδα 4
Ansluta till en dator, smarttelefon eller surfplatta.....	sida 4
Koble til en datamaskin, en smarttelefon eller et nettbrett.....	side 4
Tilslutning til en computer, smartphone eller tablet.....	side 4
Yhdistäminen tietokoneeseen, älypuhelimeen tai tablet-tietokoneeseen.....	sivu 4

Holding the Printer

Manipulation de l'imprimante

Halten des Druckers

De printer vasthouden

Come tenere la stampante

Segurando a impressora

Cómo sujetar la impresora

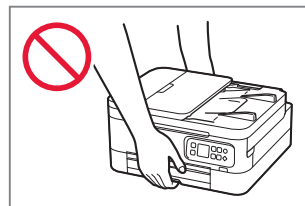
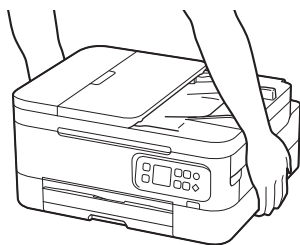
Πώς να κρατήσετε τον εκτυπωτή

Bära skrivaren

Holde skriveren

Holde printeren

Tulostimen pitäminen



Setting Up the Printer



For Setup, visit the URL

<https://ij.start.canon/TS7450>

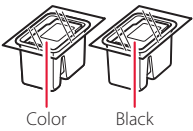
or scan the code with your mobile device



• For users without an Internet-connected environment, follow the instructions below.

1. Box Contents

• FINE Cartridges



Color

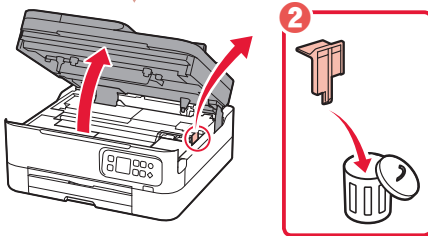
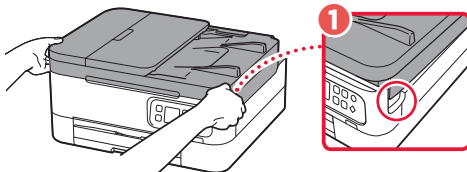
Black

- Power Cord
- Setup CD-ROM
- Safety and Important Information
- Getting Started (this manual)

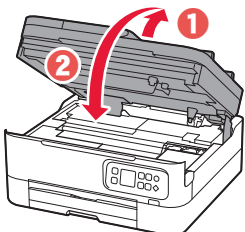
2. Removing Packing Materials



- 1 Remove and dispose of any packing materials and orange tape.
- 2 Open the scanning unit / cover, remove and dispose of the orange tape and protective material inside.



- 3 Close the scanning unit / cover.
 - Open the scanning unit / cover fully and then close it.

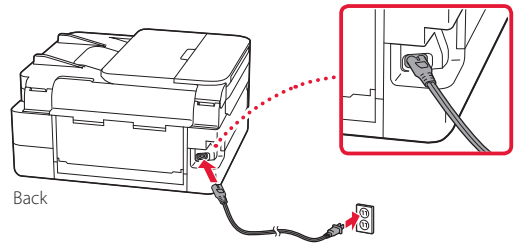


Caution
Watch your fingers.

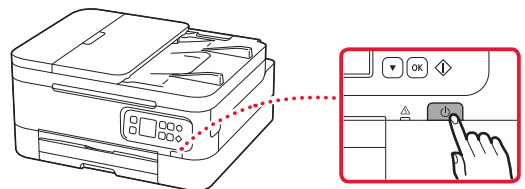
3. Turning on the Printer



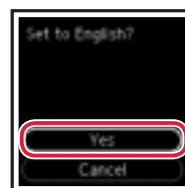
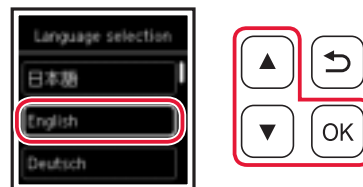
- 1 Connect the power cord.



- 2 Press the **ON** button.



- 3 Use the **▲** and **▼** buttons to select a language, and then press the **OK** button.

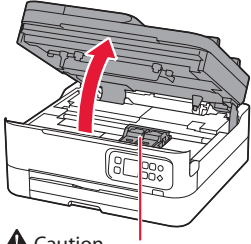


Setting Up the Printer

4. Installing the FINE Cartridges



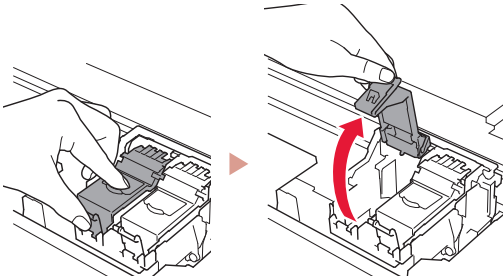
1 Open the scanning unit / cover.



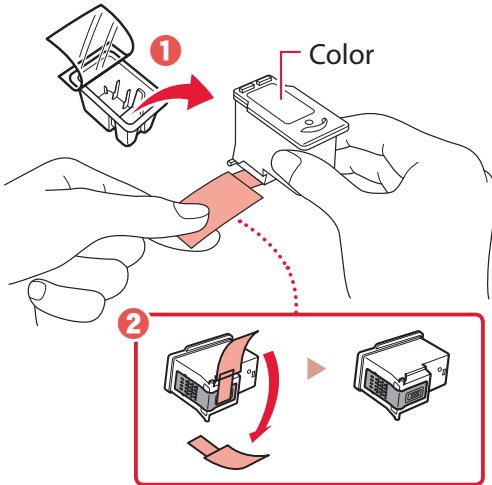
⚠ Caution

Do not touch the FINE cartridge holder until it stops moving.

2 Pinch and open the ink cartridge locking cover on the left-hand side.

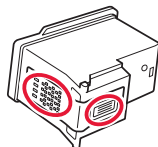


3 Remove the Color FINE cartridge from the container and remove the protective tape.

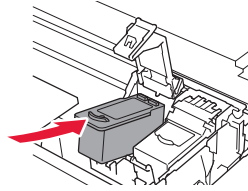


Important

- Do not touch the ink on the protective tape. It could stain your hands or surrounding objects.
- Do not touch the areas shown in the figure. Otherwise, the printer may not print correctly.

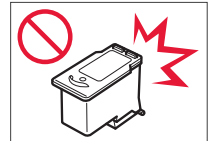


4 Set the Color FINE cartridge in the FINE cartridge holder.

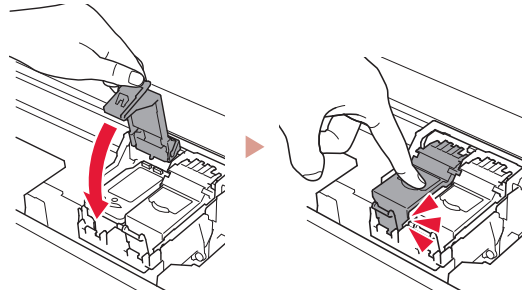


Important

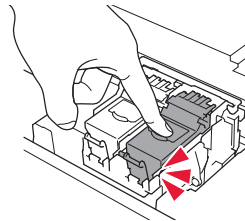
Do not bump the FINE cartridge. Doing so may cause a malfunction.



5 Push down the ink cartridge locking cover firmly until it snaps into place to close it completely.

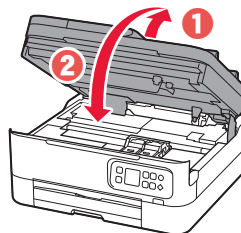


6 Repeat steps 2 to 5 and install the Black FINE cartridge as well, on the right-hand side.



7 Close the scanning unit / cover.

- The printer will start initializing.



⚠ Caution

Watch your fingers.

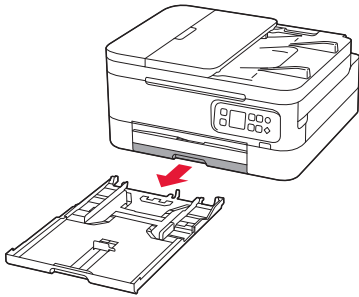
5. Loading Paper



- 1 Press the **OK** button.

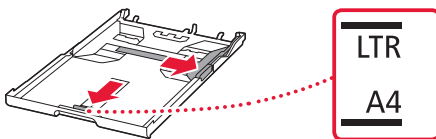


- 2 Remove the cassette from the printer.



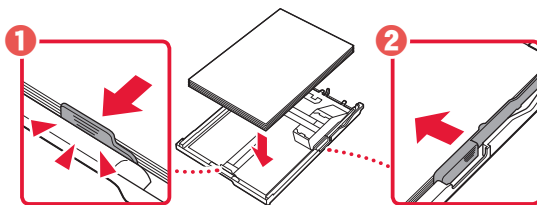
- 3 Slide apart the paper guides.

- Slide the right paper guide to the right edge. Align the front paper guide with the Letter or A4 mark.

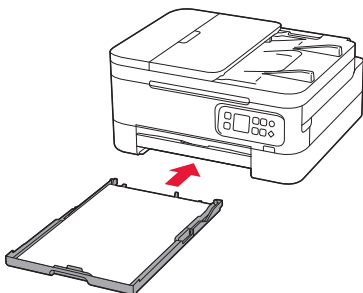


- 4 Load paper.

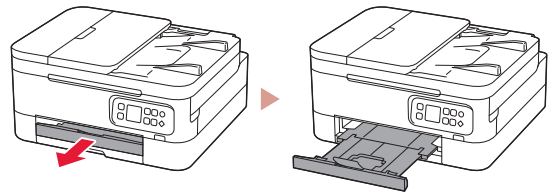
- Load 2 or more sheets of Letter or A4 sized plain paper.
- Place the paper against the front paper guide, and align the right paper guide to the width of the paper.



- 5 Replace the cassette.



- 6 Pull out the paper output tray.



- 7 Press the **OK** button.



▶▶▶ Note

The alignment process prints out two double sided sheets.

Do not pull out the paper or use the printer until alignment is complete.

- 8 Check that the following screen appears.



If you will use the printer without connecting any other devices, setup is now complete.

Select the connection method that best matches how you will use the printer.

- To use the printer without connecting to any other devices
 - ➔ Setup is now complete.
- To use the printer connecting to a computer or smartphone
 - ➔ Proceed to the next page.

Setting Up the Printer

What device are you connecting?



Computer



Computer and
smartphone






Smartphone

6-a

Connecting to a Computer

If you are using multiple computers, perform these steps on each computer.



- 1 Access the Canon website from your computer.
 <https://ij.start.canon>
- 2 Select  **Set Up**.
- 3 Enter your printer's model name and click **Go**.
- 4 Click **Start**.
- 5 Click **(B) Connecting to a Computer/ Smartphone**.
 - The following steps are for Windows users.
- 6 Click **Download**.
- 7 Run the downloaded file.
- 8 Click **Start Setup**.

- 9 Follow the on-screen instructions.
 - These operations may take some time.
 - To connect to a smartphone as well, see "6-b. Connecting to a Smartphone" on page 5.



Using the Setup CD-ROM

Double click **EasySetup.exe** in the CD-ROM, and then continue from step 3. If you do not have an internet connection, open the **win** folder in the CD-ROM and double click **SETUP.exe**. This will install the printer driver.

6-b Connecting to a Smartphone

If you are using multiple smartphones, perform these steps on each smartphone.



1 Install the "Canon PRINT Inkjet/SELPHY" app on your smartphone.



- Search for "Canon PRINT" in App Store, or Google Play.
- Access the Canon website to download the app.



2 Open the installed app, and follow the on-screen instructions in the app to add your printer.



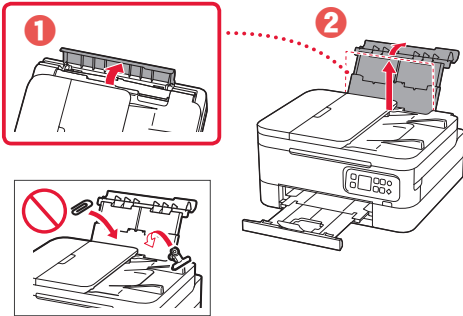
Once you have added your printer, you can print from your smartphone.

To print photos, see "Loading Photo Paper" on page 6.

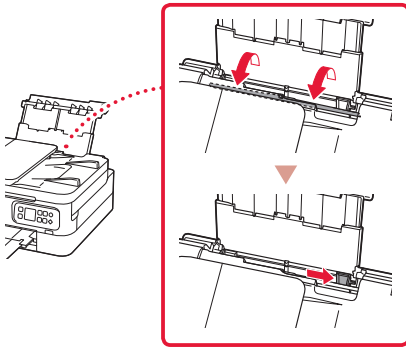
Loading Photo Paper

Photo paper can only be loaded in the rear tray.

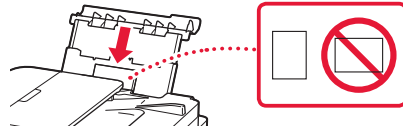
- 1 Open the rear tray cover and extend the paper support.



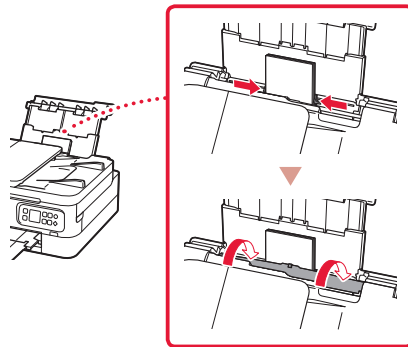
- 2 Open the feed slot cover and slide the right-hand side paper guide to the far right.



- 3 Load several sheets of photo paper with the print side facing up.

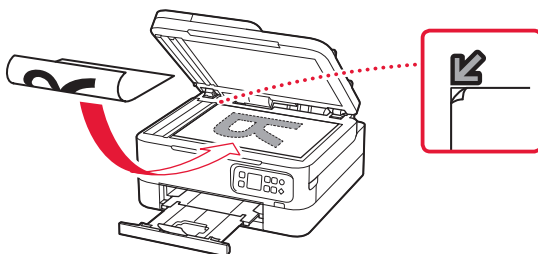


- 4 Align the paper guide to the paper, and then close the feed slot cover.
 - Follow the on-screen instructions to set information for the loaded paper.



Copying

- 1 Turn on the printer.
- 2 Load Letter or A4 sized plain paper.
- 3 Open the document cover and place the document face down on the platen. Align the document with the alignment mark (↙).



- 4 Close the document cover.
- 5 Press the **OK** button.
- 6 Select **Copy settings**, and then press the **OK** button.
- 7 Specify print settings using the ▲, ▼ and **OK** buttons.



- 8 Press the **Start** button.

Configuration de l'imprimante



Pour la configuration, rendez-vous sur l'URL

<https://ij.start.canon/TS7450>

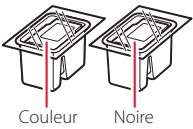


ou numérisez le code avec votre appareil mobile

• Pour les utilisateurs ne disposant pas d'un environnement connecté à Internet, suivez les instructions ci-dessous.

1. Contenu de la boîte

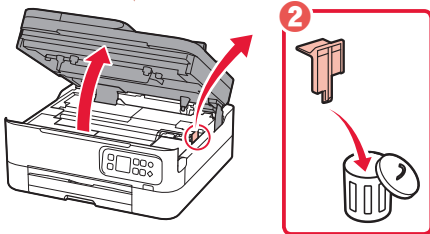
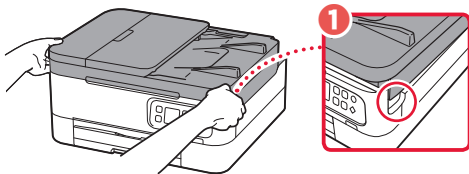
- Cartouches FINE
- Cordon d'alimentation
- CD-ROM d'installation
- Sécurité et informations importantes
- Démarrage (ce manuel)



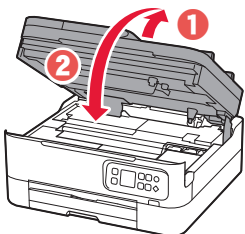
2. Retrait du matériel d'emballage



- 1 Enlevez et jetez tout matériel d'emballage et bande orange.
- 2 Ouvrez l'unité de numérisation / capot, retirez et jetez toute bande orange et matériau protecteur se trouvant à l'intérieur.



- 3 Fermez l'unité de numérisation / capot.
 - Ouvrez complètement l'unité de numérisation / capot, puis fermez-la.

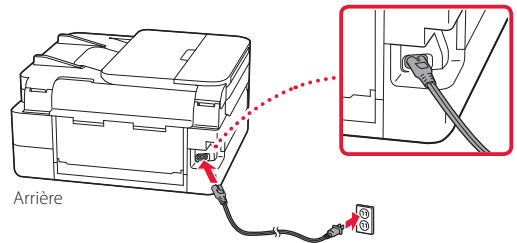


⚠ Attention
Faites attention à vos doigts.

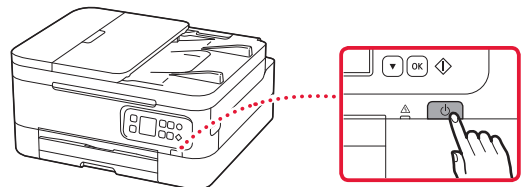
3. Mise sous tension de l'imprimante



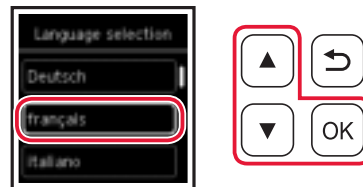
- 1 Branchez le cordon d'alimentation.



- 2 Appuyez sur le bouton **MARCHE (ON)**.



- 3 Utilisez les boutons ▲ et ▼ pour sélectionner une langue, puis appuyez sur le bouton **OK**.

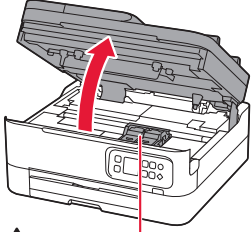


Configuration de l'imprimante

4. Installation des cartouches FINE



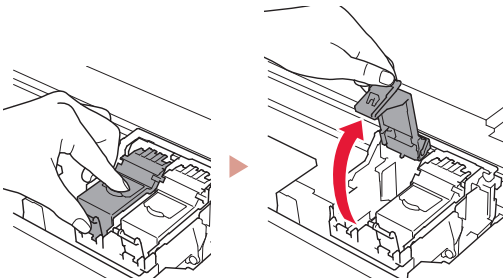
1 Ouvrez l'unité de numérisation / capot.



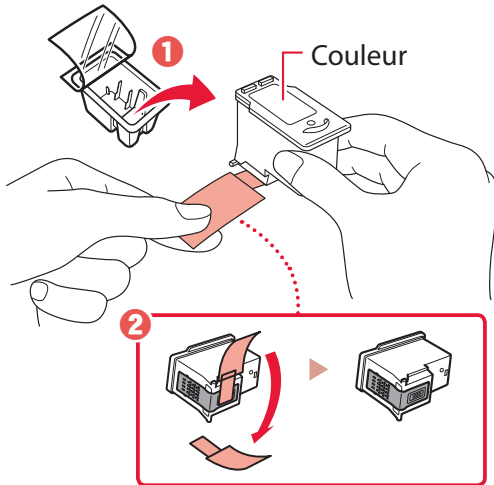
⚠ Attention

Ne touchez pas le porte-cartouche FINE avant son arrêt.

2 Pincez et ouvrez le couvercle de verrouillage de cartouche d'encre sur la gauche.

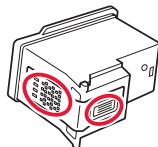


3 Retirez la cartouche FINE couleur du conteneur et retirez le ruban protecteur.

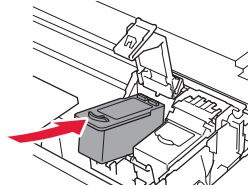


»»» Important

- Ne touchez pas l'encre se trouvant sur le ruban protecteur. Cela pourrait salir vos mains ou les objets environnants.
- Ne touchez pas les zones présentées dans la figure. Sinon, l'imprimante pourrait ne pas imprimer correctement.

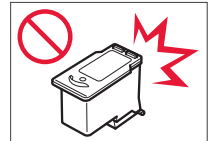


4 Installez la cartouche FINE couleur dans le porte-cartouche FINE.

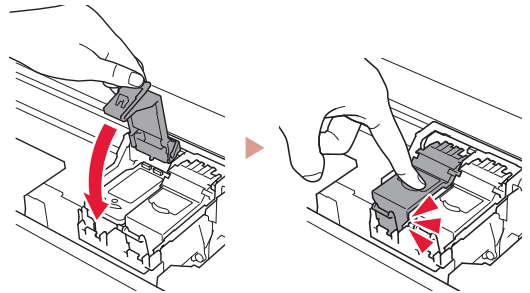


»»» Important

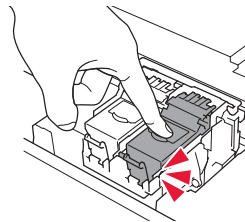
Ne cognez pas la cartouche FINE. Cela risquerait d'entraîner un dysfonctionnement.



5 Poussez fermement vers le bas le couvercle de verrouillage de cartouche d'encre jusqu'au déclic pour le fermer complètement.

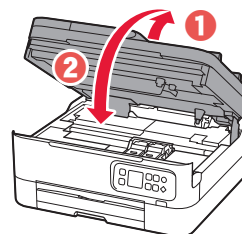


6 Répétez les étapes 2 à 5 et installez également la cartouche FINE noire sur la droite.



7 Fermez l'unité de numérisation / capot.

- L'imprimante commence à s'initialiser.



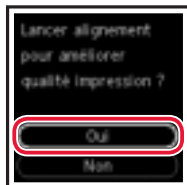
⚠ Attention

Faites attention à vos doigts.

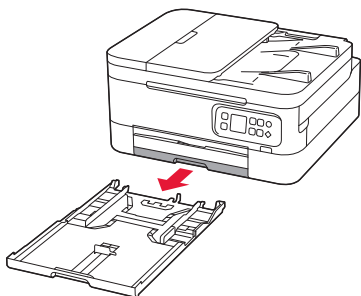
5. Chargement du papier



1 Appuyez sur le bouton **OK**.

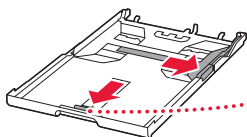


2 Retirez la cassette de l'imprimante.



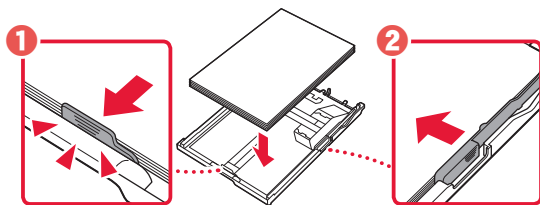
3 Faites glisser séparément les guides papier.

- Faites glisser le guide papier droit vers le bord droit. Alignez le guide papier avant sur la marque Lettre ou A4.

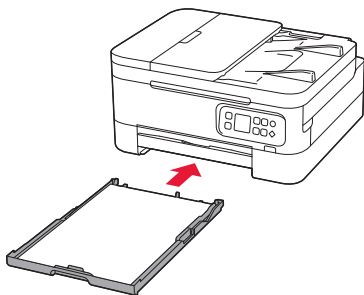


4 Chargez du papier.

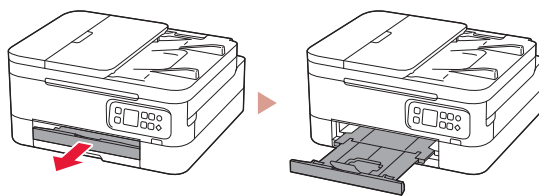
- Chargez au moins 2 feuilles de papier ordinaire au format Lettre ou A4.
- Placez le papier contre le guide papier avant et alignez le guide papier droit sur la largeur du papier.



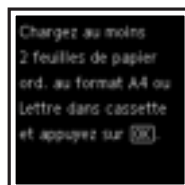
5 Remettez la cassette en place.



6 Retirez le bac de sortie papier.



7 Appuyez sur le bouton **OK**.

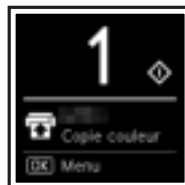


Remarque

Le processus d'alignement imprimer deux feuilles recto verso.

Ne tirez pas sur le papier ou n'utilisez pas l'imprimante tant que l'alignement n'est pas terminé.

8 Assurez-vous que l'écran suivant s'affiche.



Pour utiliser l'imprimante sans connecter aucun autre périphérique, la configuration est terminée.

Sélectionnez la méthode de connexion correspondant le mieux à la manière dont vous utiliserez l'imprimante.

- Pour utiliser l'imprimante sans connexion à aucun autre périphérique
 - ➔ La configuration est terminée.
- Pour utiliser l'imprimante en la connectant à un ordinateur ou à un smartphone
 - ➔ Passez à la page suivante.

Quel périphérique connectez-vous ?



Ordinateur



Ordinateur et
smartphone



Smartphone



6-a


Connexion à un ordinateur

Si vous utilisez plusieurs ordinateurs, effectuez ces étapes sur chaque ordinateur.



- 1 Accès au site Web Canon à partir de votre ordinateur.

 <https://ij.start.canon>

- 2 Sélectionnez  **Configuration**.
- 3 Entrez le nom de modèle de votre imprimante et cliquez sur **Accéder**.
- 4 Cliquez sur **Démarrer**.
- 5 Cliquez sur **(B) Connexion à un ordinateur/smartphone**.

- Les étapes suivantes concernent les utilisateurs Windows.

- 6 Cliquez sur **Télécharger**.
- 7 Exécutez le fichier téléchargé.
- 8 Cliquez sur **Commencer la configuration**.



- 9 Suivez les instructions à l'écran.
 - Ces opérations peuvent prendre du temps.
 - Pour vous connecter aussi à un smartphone, voir « 6-b. Connexion à un smartphone » à la page 5.



Utilisation du CD-ROM d'installation

Cliquez deux fois sur **EasySetup.exe** à partir du CD-ROM, puis continuez à partir de l'étape 3. Si vous ne disposez pas d'une connexion Internet, ouvrez le dossier **win** à partir du CD-ROM et cliquez deux fois sur **SETUP.exe**. Cette procédure permet d'installer le pilote d'imprimante.

6-b

Connexion à un smartphone

Si vous utilisez plusieurs smartphones, effectuez ces étapes sur chaque smartphone.



1 Installez l'application « Canon PRINT Inkjet/SELPHY » sur votre smartphone.



- Recherchez « Canon PRINT » dans App Store ou Google Play.
- Accédez au site Web Canon pour télécharger l'application.



2 Ouvrez l'application installée, puis suivez les instructions affichées à l'écran par l'application pour ajouter votre imprimante.

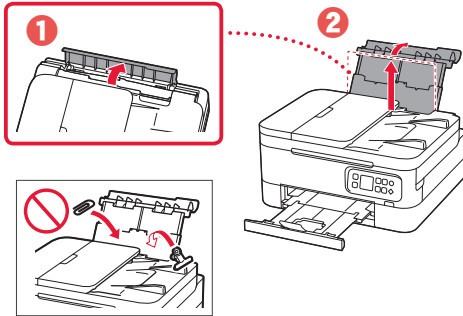


Une fois que vous avez ajouté votre imprimante, vous pouvez imprimer depuis votre smartphone. Pour imprimer des photos, voir « Chargement de papier photo » à la page 6.

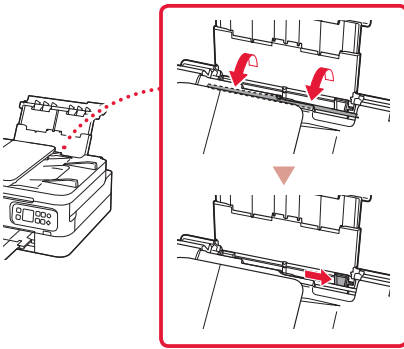
Chargement de papier photo

Le papier photo peut être chargé uniquement dans le réceptacle arrière.

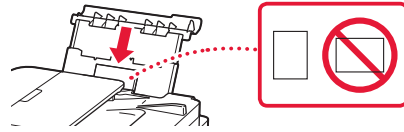
- 1 Ouvrez le couvercle du réceptacle arrière et déployez le support papier.



- 2 Ouvrez le couvercle de la fente d'alimentation et faites glisser le guide papier droit vers l'extrême droite.

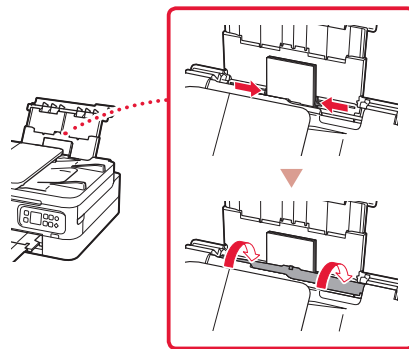


- 3 Chargez plusieurs feuilles de papier photo face à imprimer vers le haut.



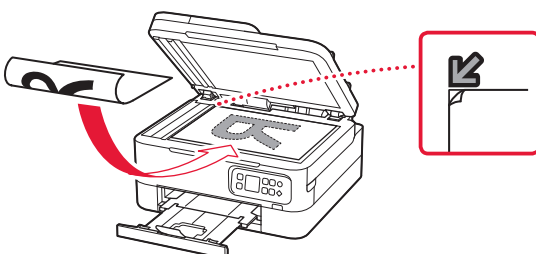
- 4 Alignez le guide papier avec le papier, puis fermez le couvercle de la fente d'alimentation.

- Suivez les instructions à l'écran pour définir les informations sur le papier chargé.



Copie

- 1 Mettez l'imprimante sous tension.
- 2 Chargez du papier ordinaire au format Lettre ou A4.
- 3 Ouvrez le capot du scanner et placez le document face vers le bas sur la vitre d'exposition. Alignez le document avec le repère d'alignement (↙).



- 4 Fermez le capot du scanner.
- 5 Appuyez sur le bouton **OK**.
- 6 Sélectionnez **Paramètres de copie**, puis appuyez sur le bouton **OK**.
- 7 Spécifiez les paramètres d'impression à l'aide des boutons ▲, ▼ et **OK**.



- 8 Appuyez sur le bouton **Démarrage (Start)**.

Einrichten des Druckers



Um Informationen zur Einrichtung zu erhalten, rufen Sie die URL

<https://ij.start.canon/TS7450>

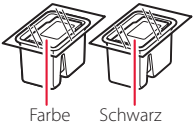


auf oder scannen Sie den Code mit Ihrem Mobilgerät

- Benutzer ohne Internetverbindung befolgen bitte die folgenden Anweisungen.

1. Inhalt der Box

- FINE-Patronen



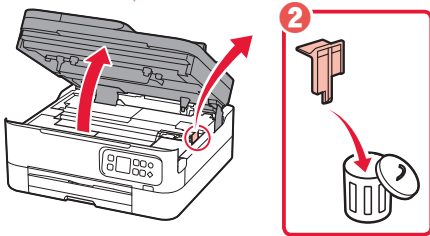
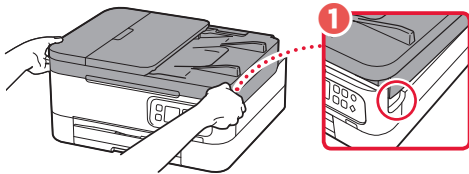
Farbe Schwarz

- Netzkabel
- Installations-CD-ROM
- Sicherheitsinformationen und wichtige Hinweise
- Inbetriebnahme (dieses Handbuch)

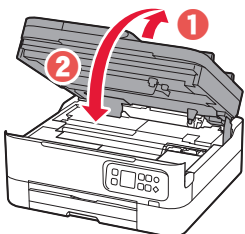
2. Entfernen des Verpackungsmaterials



- 1 Entfernen und entsorgen Sie das gesamte Verpackungsmaterial sowie das orangefarbene Klebeband.
- 2 Öffnen Sie das Scan-Modul/die Abdeckung, entfernen und entsorgen Sie das orangefarbene Klebeband sowie das Schutzmaterial aus dem Inneren.



- 3 Schließen Sie das Scan-Modul/die Abdeckung.
 - Öffnen Sie das Scan-Modul/die Abdeckung vollständig und schließen Sie es/sie dann wieder.

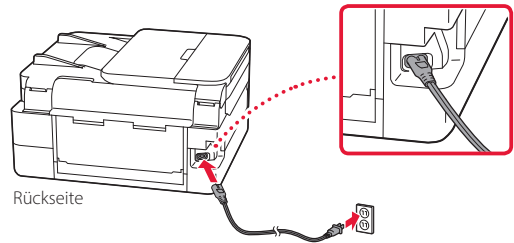


⚠ Vorsicht
Passen Sie auf Ihre Finger auf.

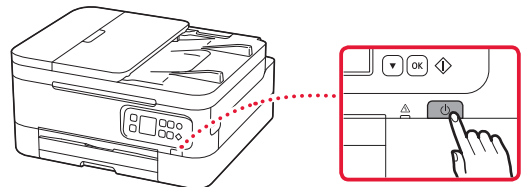
3. Einschalten des Druckers



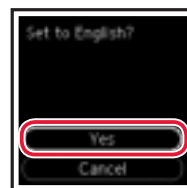
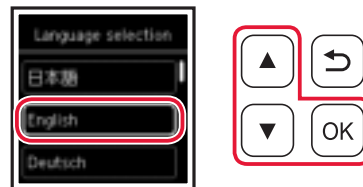
- 1 Schließen Sie das Netzkabel an.



- 2 Drücken Sie die Taste **EIN (ON)**.



- 3 Verwenden Sie die Tasten **▲** und **▼**, um eine Sprache auszuwählen, und drücken Sie anschließend die Taste **OK**.

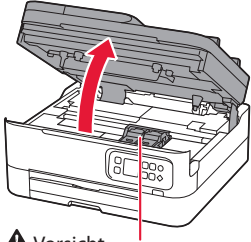


Einrichten des Druckers

4. Einsetzen der FINE-Patronen



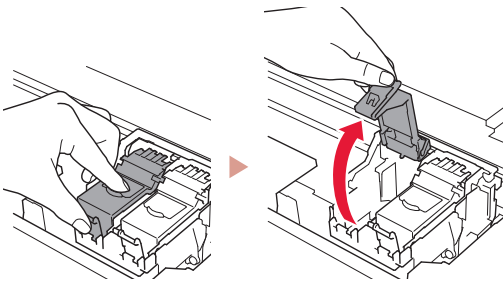
1 Öffnen Sie das Scan-Modul/die Abdeckung.



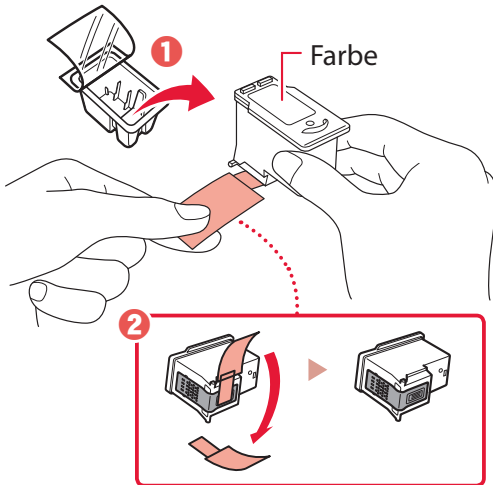
⚠ Vorsicht

Berühren Sie die FINE-Patronen-Halterung nicht, solange sie sich bewegt.

2 Drücken und öffnen Sie die Verriegelung der Tintenpatronen auf der linken Seite.

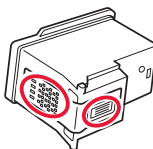


3 Nehmen Sie die farbige FINE-Patrone aus dem Behälter und entfernen Sie das Schutzband.

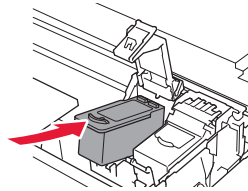


Wichtig

- Berühren Sie nicht die Tinte auf dem Schutzband. Ihre Hände oder Objekte in der Nähe könnten dadurch verschmutzt werden.
- Berühren Sie nicht die in der Abbildung gezeigten Bereiche. Andernfalls druckt der Drucker möglicherweise nicht richtig.

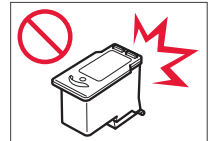


4 Setzen Sie die farbige FINE-Patrone in die FINE-Patronen-Halterung ein.

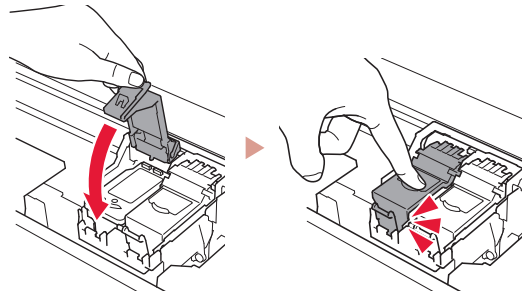


Wichtig

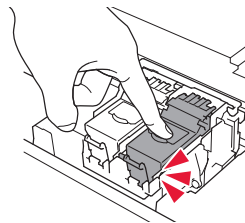
Stoßen Sie mit der FINE-Patrone nirgends an. Dies könnte zu einer Fehlfunktion führen.



5 Drücken Sie die Verriegelung der Tintenpatronen fest nach unten, bis sie einrastet, um diese vollständig zu schließen.

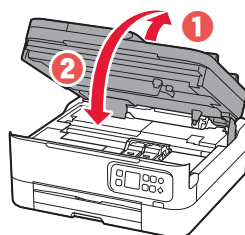


6 Wiederholen Sie die Schritte 2 bis 5 und setzen Sie auch die schwarze FINE-Patrone auf der rechten Seite ein.



7 Schließen Sie das Scan-Modul/die Abdeckung.

- Der Drucker wird initialisiert.



⚠ Vorsicht

Passen Sie auf Ihre Finger auf.

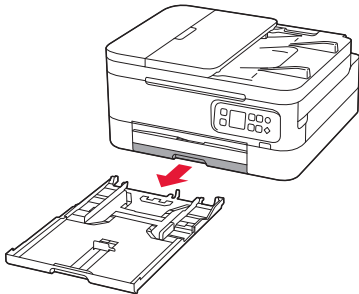
5. Einlegen von Papier



1 Drücken Sie die Taste **OK**.

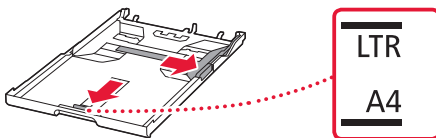


2 Entfernen Sie die Kassette aus dem Drucker.



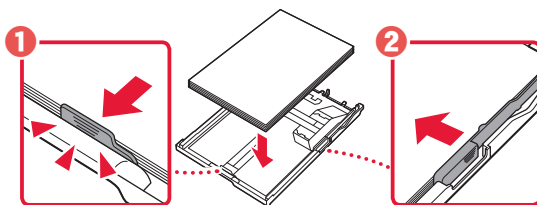
3 Schieben Sie die Papierführungen auseinander.

- Schieben Sie die rechte Papierführung an die rechte Kante. Richten Sie die vordere Papierführung an der Markierung für Letter oder A4 aus.

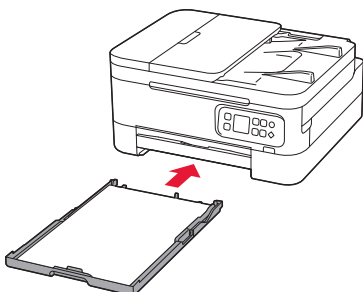


4 Legen Sie Papier ein.

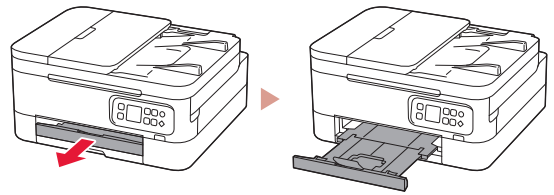
- Legen Sie 2 oder mehr Blatt Normalpapier des Formats Letter oder A4 ein.
- Schieben Sie das Papier gegen die vordere Papierführung und richten Sie die rechte Papierführung an der Breite des Papiers aus.



5 Setzen Sie die Kassette wieder ein.



6 Ziehen Sie das Papierausgabefach heraus.



7 Drücken Sie die Taste **OK**.



»»» Hinweis

Während der Ausrichtung werden zwei doppelseitig bedruckte Blätter ausgegeben.

Ziehen Sie das Papier nicht heraus und verwenden Sie den Drucker nicht, bis die Ausrichtung abgeschlossen wurde.

8 Überprüfen Sie, ob der folgende Bildschirm angezeigt wird.



Wenn Sie den Drucker ohne Anschluss weiterer Geräte verwenden, ist die Einrichtung nun abgeschlossen.

Wählen Sie die Verbindungsmethode aus, die der späteren Verwendung des Druckers am besten entspricht.

- Verwenden des Druckers ohne Anschluss weiterer Geräte
 - ➔ Die Einrichtung ist jetzt abgeschlossen.
- Verwenden des Druckers, indem eine Verbindung mit einem Computer oder Smartphone hergestellt wird
 - ➔ Fahren Sie auf der nächsten Seite fort.

Mit welchem Gerät stellen Sie eine Verbindung her?



Computer



Computer und
Smartphone





Smartphone

6-a

Herstellen einer Verbindung mit einem Computer

Wenn Sie mehrere Computer verwenden, führen Sie diese Schritte auf jedem Computer aus.



- 1 Greifen Sie von Ihrem Computer aus auf die Canon-Website zu.
 <https://ij.start.canon>
- 2 Wählen Sie  **Einrichten** aus.
- 3 Geben Sie den Modellnamen Ihres Druckers ein und klicken Sie auf **Los**.
- 4 Klicken Sie auf **Start**.
- 5 Klicken Sie auf **(B) Herstellen einer Verbindung mit einem Computer/ Smartphone**.
 - Die folgenden Schritte gelten für Benutzer von Windows.
- 6 Klicken Sie auf **Herunterladen**.
- 7 Führen Sie die heruntergeladene Datei aus.
- 8 Klicken Sie auf **Setup starten (Start Setup)**.

- 9 Befolgen Sie die Anweisungen auf dem Bildschirm.
 - Diese Verfahren können einige Zeit dauern.
 - Um auch eine Verbindung mit einem Smartphone herzustellen, lesen Sie „6-b. Herstellen einer Verbindung mit einem Smartphone“ auf Seite 5.



Verwenden der Installations-CD-ROM

Doppelklicken Sie auf **EasySetup.exe** auf der CD-ROM und fahren Sie dann bei Schritt 3 fort. Wenn Sie keinen Internetzugang haben, öffnen Sie den Ordner **win** auf der CD-ROM und doppelklicken Sie auf **SETUP.exe**. Dadurch wird der Druckertreiber installiert.

6-b

Herstellen einer Verbindung mit einem Smartphone

Wenn Sie mehrere Smartphones verwenden, führen Sie diese Schritte auf jedem Smartphone aus.



1 Installieren Sie die App „Canon PRINT Inkjet/SELPHY“ auf Ihrem Smartphone.



- Suchen Sie „Canon PRINT“ im App Store oder in Google Play.
- Rufen Sie die Canon-Website auf, um die App herunterzuladen.



2 Öffnen Sie die installierte App und befolgen Sie die Anweisungen in der App, um Ihren Drucker hinzuzufügen.

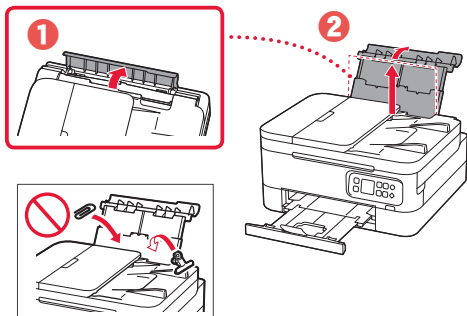


Sobald Sie Ihren Drucker hinzugefügt haben, können Sie über Ihr Smartphone drucken.
Informationen zum Drucken von Fotos finden Sie unter „Einlegen von Fotopapier“ auf Seite 6.

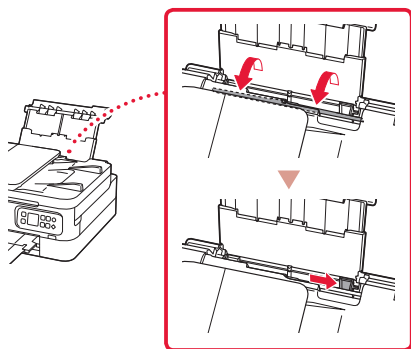
Einlegen von Fotopapier

Fotopapier kann nur in das hintere Fach eingelegt werden.

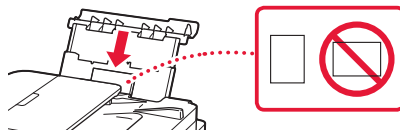
- 1 Öffnen Sie die Abdeckung des hinteren Fachs und ziehen Sie die Papierstütze heraus.



- 2 Öffnen Sie die Abdeckung für den Einzugschacht und schieben Sie die rechte Papierführung ganz nach rechts.

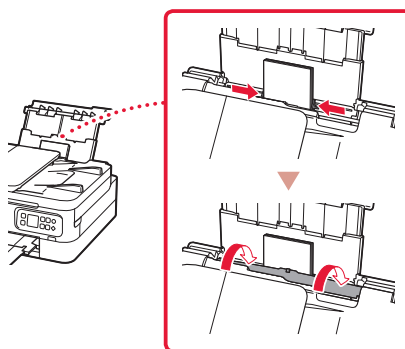


- 3 Legen Sie mehrere Blätter Fotopapier mit der bedruckbaren Seite nach oben ein.



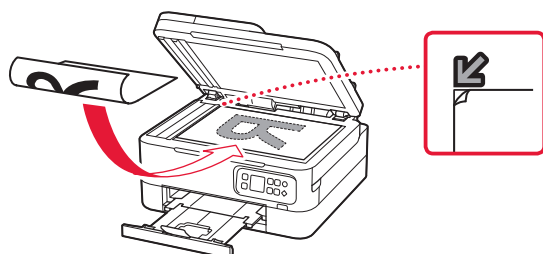
- 4 Richten Sie die Papierführung am Papier aus und schließen Sie dann die Abdeckung für den Einzugschacht.

- Befolgen Sie die Anweisungen auf dem Bildschirm, um Informationen für das eingelegte Papier festzulegen.



Kopieren

- 1 Schalten Sie den Drucker ein.
- 2 Legen Sie Normalpapier des Formats Letter oder A4 ein.
- 3 Öffnen Sie die Vorlagenabdeckung und legen Sie das Dokument mit der bedruckbaren Seite nach unten auf die Auflage. Richten Sie das Dokument an der Ausrichtungsmarkierung (↙) aus.



- 4 Schließen Sie die Vorlagenabdeckung.
- 5 Drücken Sie die Taste **OK**.
- 6 Wählen Sie **Kopiereinstellungen (Copy settings)** aus und drücken Sie dann die Taste **OK**.
- 7 Legen Sie die Druckinformationen mit den Tasten ▲, ▼ und **OK** fest.



- 8 Drücken Sie die Taste **Start**.

De printer instellen



Voor de installatie gaat u naar de URL

<https://ij.start.canon/TS7450>

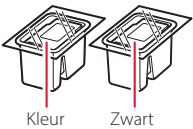


of scant u de code met uw mobiele apparaat

● Gebruikers zonder internetverbinding volgen de onderstaande instructies.

1. Inhoud van de doos

● FINE-cartridges

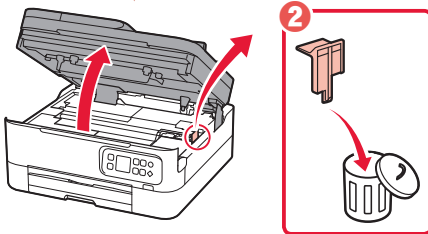
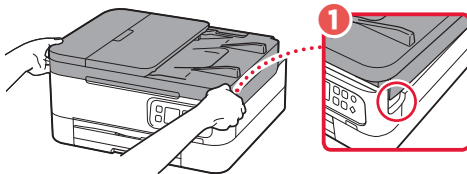


- Netsnoer
- Installatie-cd-rom
- Veiligheidsinformatie en belangrijke informatie
- Aan de Slag-gids (deze handleiding)

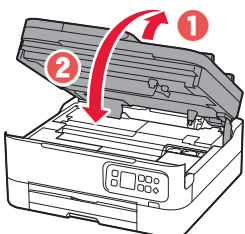
2. Verpakkingsmateriaal verwijderen



- 1 Verwijder het verpakkingsmateriaal en de oranje tape en gooi het weg.
- 2 Open de scaneenheid / klep, verwijder de oranje tape en het beschermende materiaal erin en gooi het weg.



- 3 Sluit de scaneenheid / klep.
 - Open de scaneenheid / klep volledig en sluit deze vervolgens.

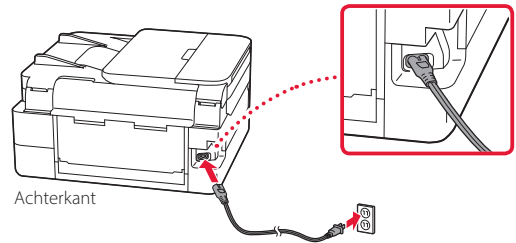


▲ Let op
Kijk uit met uw vingers.

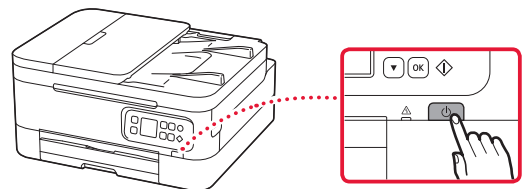
3. De printer inschakelen



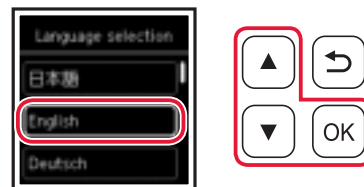
- 1 Sluit het netsnoer aan.



- 2 Druk op de knop **AAN (ON)**.



- 3 Gebruik de knoppen ▲ en ▼ om een taal te selecteren en druk vervolgens op de knop **OK**.

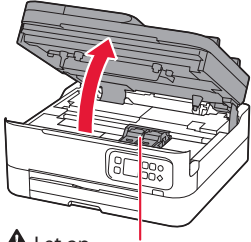


De printer instellen

4. De FINE-cartridges installeren



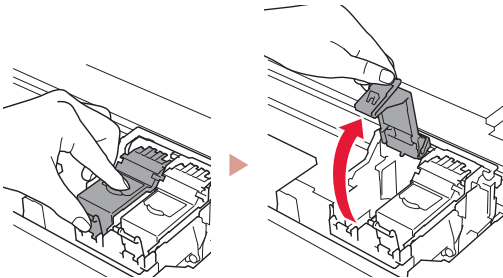
1 Open de scaneenheid / klep.



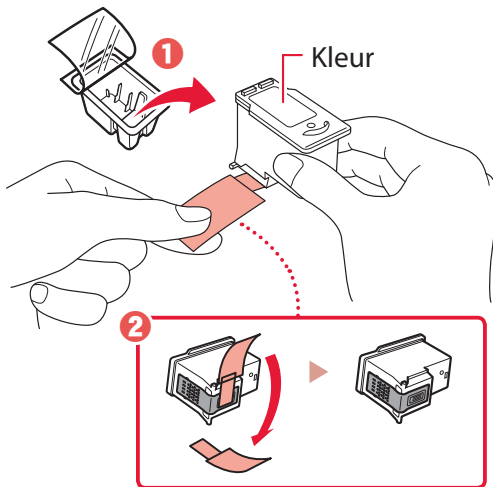
⚠ Let op

Raak de FINE-cartridgehouder niet aan totdat deze stopt met bewegen.

2 Knijp in het sluitklepje van de inktcartridge aan de linkerzijde en open het.

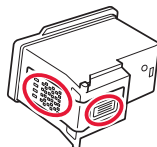


3 Haal de kleuren FINE-cartridge uit de verpakking en verwijder de beschermende tape.

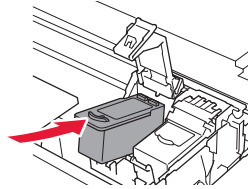


»»» Belangrijk

- Raak de inkt op de beschermende tape niet aan. Deze kan vlekken veroorzaken op uw handen of op voorwerpen in de buurt.
- Raak de aangegeven gebieden in de afbeelding niet aan. De printer kan anders mogelijk niet correct afdrukken.

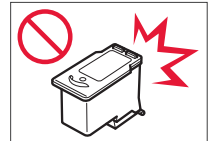


4 Plaats de kleuren FINE-cartridge in de FINE-cartridgehouder.

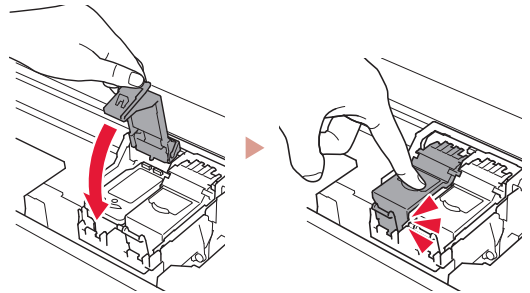


»»» Belangrijk

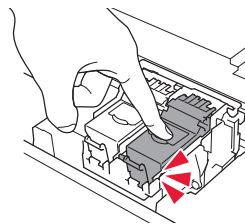
Stoot niet tegen de FINE-cartridge. Als u dat wel doet, kan dit leiden tot defecten.



5 Duw het sluitklepje van de inktcartridge stevig omlaag totdat dit op zijn plaats klikt en volledig is gesloten.

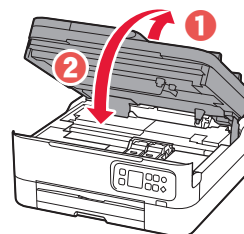


6 Herhaal stap 2 tot en met 5 om ook de zwarte FINE-cartridge aan de rechterkant te plaatsen.



7 Sluit de scaneenheid / klep.

- De initialisatie van de printer wordt gestart.



⚠ Let op

Kijk uit met uw vingers.

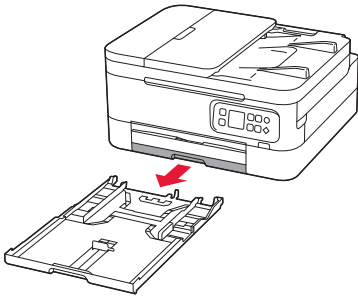
5. Papier plaatsen



1 Druk op de knop **OK**.

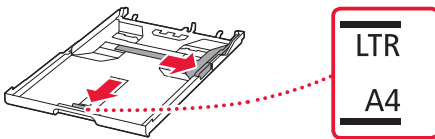


2 Verwijder de cassette uit de printer.



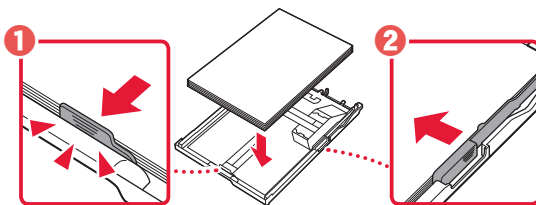
3 Schuif de papiergeleiders uit elkaar.

- Schuif de rechterpapiergeleider naar de rechterrand. Lijn de voorste papiergeleider uit met de markering Letter of A4.

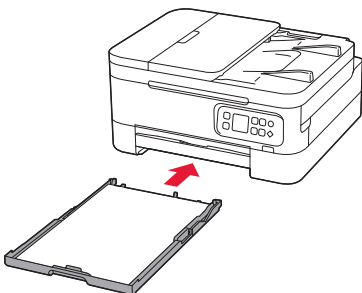


4 Plaats papier.

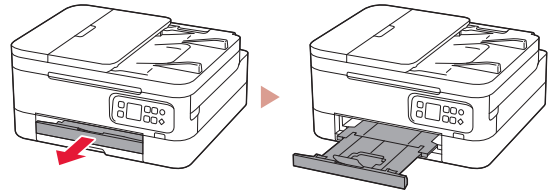
- Plaats 2 of meer vellen normaal papier van Letter- of A4-formaat.
- Plaats het papier tegen de voorste papiergeleider en lijn de rechterpapiergeleider uit met de breedte van het papier.



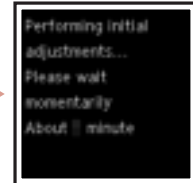
5 Plaats de cassette terug.



6 Trek de papieruitvoerlade uit.



7 Druk op de knop **OK**.



Opmerking

Tijdens het uitlijningsproces worden twee dubbelzijdige vellen afgedrukt.

Trek het papier er niet uit en gebruik de printer pas nadat de uitlijning is voltooid.

8 Controleer of het volgende scherm verschijnt.



Als u de printer wilt gebruiken zonder deze met andere apparaten te verbinden, is de installatie nu voltooid.

Selecteer de verbindingmethode die het beste past bij de manier waarop u de printer gebruikt.

- Als u de printer wilt gebruiken zonder deze met andere apparaten te verbinden
 - ➔ De installatie is nu voltooid.
- De printer gebruiken door deze met een computer of smartphone te verbinden
 - ➔ Ga verder naar de volgende pagina.

Met welk apparaat maakt u verbinding?



Computer



Computer en
smartphone





Smartphone

6-a

Verbinden met een computer

Als u meerdere computers gebruikt, voert u deze stappen uit op elke computer.



- 1 Ga naar de Canon-website op uw computer.
 <https://ij.start.canon>
- 2 Selecteer  **Installatie**.
- 3 Voer de modelnaam van de printer in en klik op **Ga**.
- 4 Klik op **Start**.
- 5 Klik op **(B) Verbinding maken met een computer/smartphone**.
 - De volgende stappen zijn bedoeld voor Windows-gebruikers.
- 6 Klik op **Downloaden**.
- 7 Voer het gedownloadde bestand uit.
- 8 Klik op **Beginnen met instellen (Start Setup)**.

- 9 Volg de instructies op het scherm.
 - Deze handelingen kunnen enige tijd duren.
 - Als u ook verbinding wilt maken met een smartphone, raadpleegt u "6-b. Verbinden met een smartphone" op pagina 5.



De installatie-cd-rom gebruiken

Dubbelklik op **EasySetup.exe** vanaf de cd-rom en ga verder vanaf stap 3. Als u geen internetverbinding hebt, opent u de map **win** van de cd-rom en dubbelklikt u op **SETUP.exe**. Hiermee wordt het printerstuurprogramma geïnstalleerd.

6-b

Verbinden met een smartphone

Als u meerdere smartphones gebruikt, voert u deze stappen uit op elke smartphone.



1 Installeer de app "Canon PRINT Inkjet/SELPHY" op uw smartphone.



- Zoek "Canon PRINT" in App Store of Google Play.
- Ga naar de Canon-website om de app te downloaden.



2 Open de geïnstalleerde app en volg de instructies in de app om uw printer toe te voegen.

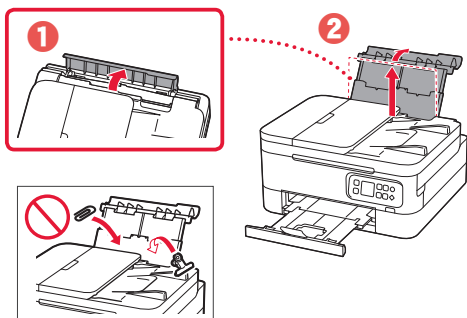


Nadat u de printer hebt toegevoegd, kunt u afdrukken vanaf uw smartphone.
Als u foto's wilt afdrukken, raadpleegt u "Fotopapier plaatsen" op pagina 6.

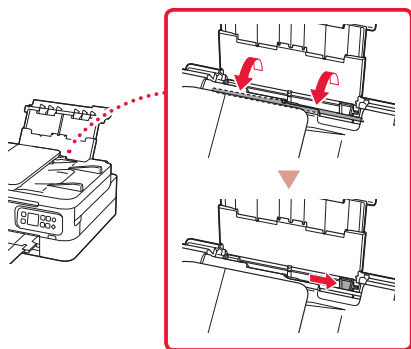
Fotopapier plaatsen

Fotopapier kan alleen in de achterste lade worden geplaatst.

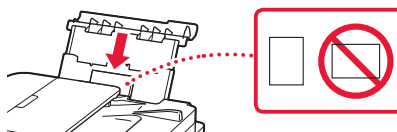
- 1 Open de klep van de achterste lade en trek de papiersteun uit.



- 2 Open het klepje over de invoersleuf en schuif de papiergeleider aan de rechterkant helemaal naar rechts.

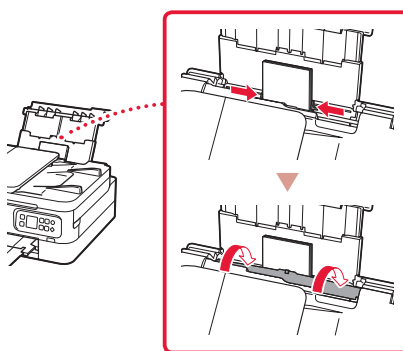


- 3 Plaats een aantal vellen fotopapier met de afdrukzijde omhoog.



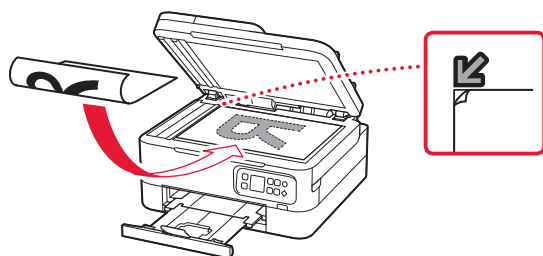
- 4 Lijn de papiergeleider uit met het papier en sluit het klepje over de invoersleuf.

- Volg de instructies op het scherm om informatie over het geplaatste papier in te stellen.



Kopiëren

- 1 Zet de printer aan.
- 2 Plaats normaal papier van Letter- of A4-formaat.
- 3 Open de documentklep en plaats het document met de bovenzijde omlaag op de plaat. Lijn het document uit met de positiemarkering (↙).



- 4 Sluit de documentklep.
- 5 Druk op de knop **OK**.
- 6 Selecteer **Kopieerinstellingen (Copy settings)** en druk vervolgens op de knop **OK**.
- 7 Geef afdrুকinstellingen op met behulp van de knoppen ▲, ▼ en **OK**.



- 8 Druk op de knop **Starten (Start)**.

Impostazione della stampante

Per eseguire l'impostazione, visitare l'URL

<https://ij.start.canon/TS7450>

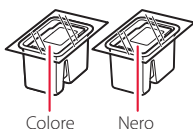
o eseguire la scansione del codice con il proprio dispositivo cellulare



● Per gli utenti che non hanno un ambiente connesso a Internet, attenersi alle istruzioni riportate di seguito.

1. Contenuto della scatola

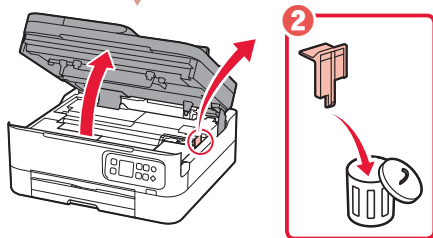
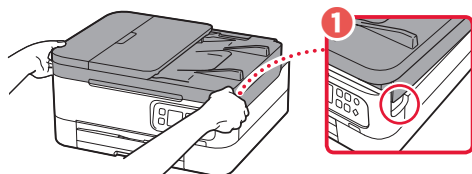
- Cartucce FINE
- Cavo di alimentazione
- CD-ROM di installazione
- Informazioni importanti e sulla sicurezza
- Guida Rapida (questo manuale)



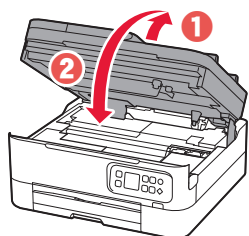
2. Rimozione del materiale da imballaggio



- 1 Rimuovere e disfarsi di eventuale materiale da imballaggio e del nastro arancione.
- 2 Aprire l'unità di scansione / coperchio, rimuovere e disfarsi del nastro arancione e del materiale di protezione all'interno.



- 3 Chiudere l'unità di scansione / coperchio.
 - Aprire completamente l'unità di scansione / coperchio, quindi chiuderla.

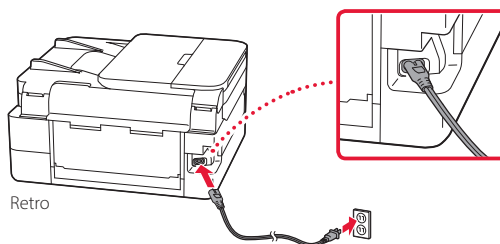


⚠ **Attenzione**
Fare attenzione alle dita.

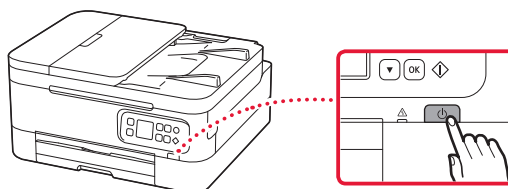
3. Accensione della stampante



- 1 Collegare il cavo di alimentazione.



- 2 Premere il pulsante **ON**.



- 3 Utilizzare i pulsanti ▲ e ▼ per selezionare una lingua, quindi premere il pulsante **OK**.

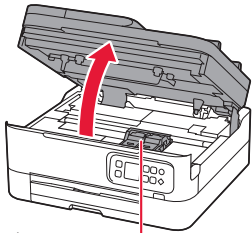


Impostazione della stampante

4. Installazione delle cartucce FINE



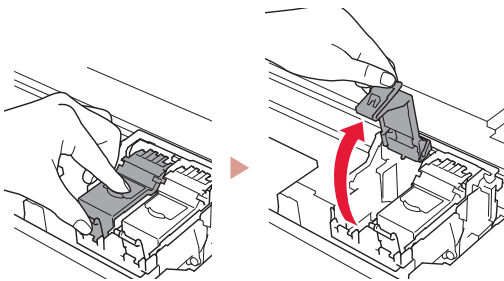
1 Aprire l'unità di scansione / coperchio.



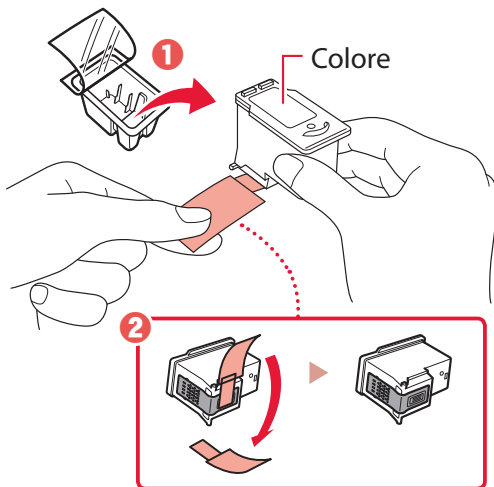
⚠ Attenzione

Non toccare il supporto cartuccia FINE fino a che non si ferma.

2 Prendere con due dita e aprire il coperchio di bloccaggio della cartuccia di inchiostro sul lato sinistro.

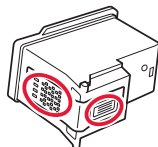


3 Rimuovere la cartuccia FINE del colore dal contenitore e rimuovere il nastro protettivo.

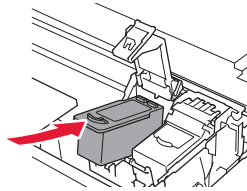


»»» Importante

- Non toccare l'inchiostro presente sul nastro protettivo. Potrebbe macchiare le mani o altri oggetti vicini.
- Non toccare le aree mostrate nella figura. Altrimenti, la stampante potrebbe non stampare correttamente.

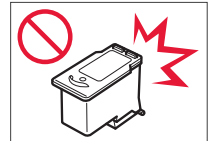


4 Installare la cartuccia FINE del colore nel supporto cartuccia FINE.

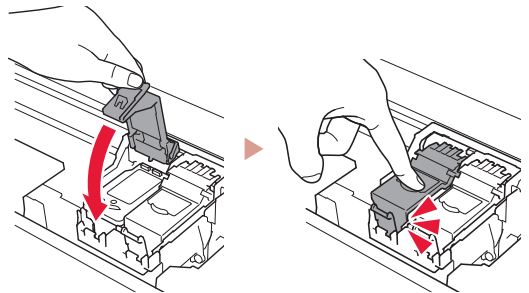


»»» Importante

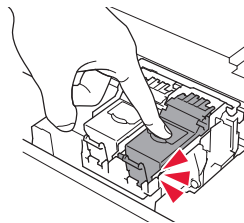
Non scuotere la cartuccia FINE. Ciò potrebbe causare un malfunzionamento.



5 Spingere con fermezza verso il basso il coperchio di bloccaggio della cartuccia di inchiostro finché non scatta in posizione per chiuderlo completamente.

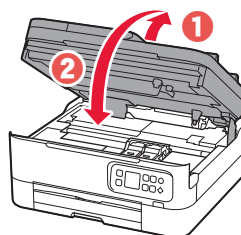


6 Ripetere i passi da 2 a 5 e installare anche la cartuccia FINE del nero sul lato destro.



7 Chiudere l'unità di scansione / coperchio.

- Verrà avviata l'inizializzazione della stampante.



⚠ Attenzione

Fare attenzione alle dita.

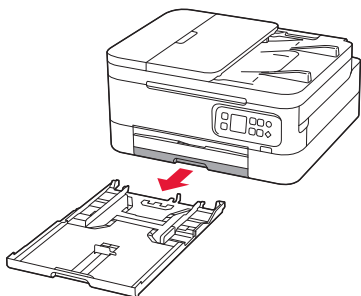
5. Caricamento della carta



1 Premere il pulsante **OK**.

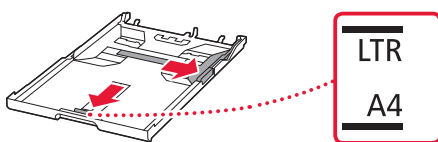


2 Rimuovere il cassetto dalla stampante.



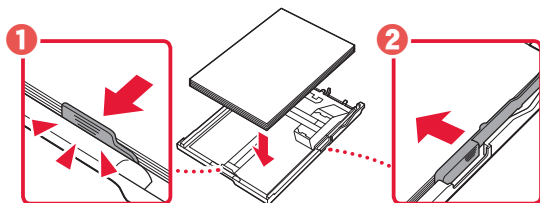
3 Far scorrere le guide della carta.

- Far scorrere la guida della carta di destra verso il margine destro. Allineare la guida della carta anteriore con il segno Letter o A4.

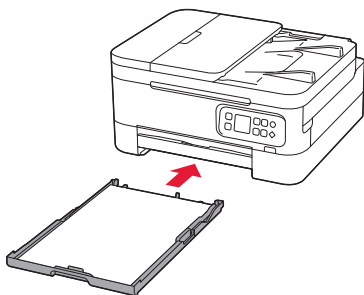


4 Caricare la carta.

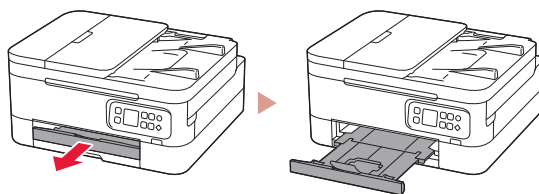
- Caricare 2 o più fogli di carta comune in formato Letter o A4.
- Posizionare la carta contro la guida della carta anteriore e allineare la guida della carta di destra alla larghezza della carta.



5 Reinscrivere il cassetto.



6 Estrarre il vassoio di uscita della carta.



7 Premere il pulsante **OK**.



►►► Nota

Il processo di allineamento richiede la stampa di due fogli fronte-retro.

Non estrarre la carta e non utilizzare la stampante fino al termine dell'allineamento.

8 Verificare che venga visualizzata la schermata seguente.



Se si intende utilizzare la stampante senza connettersi ad altre periferiche, l'impostazione è ora completata.

Selezionare il metodo di connessione che più si adatta al modo in cui si utilizzerà la stampante.

- Per utilizzare la stampante senza connettersi ad altre periferiche
 - ➔ L'impostazione è ora completata.
- Per utilizzare la stampante stabilendo una connessione a un computer o uno smartphone
 - ➔ Procedere alla pagina successiva.

Quale periferica si sta connettendo?



Computer



Computer e
smartphone



Smartphone

6-a

Connessione a un computer

Se si utilizzano più computer, eseguire questi passaggi su ciascun computer.



- 1 Accedere al sito Web di Canon dal computer.
 <https://ij.start.canon>
- 2 Selezionare  **Impostazione**.
- 3 Immettere il nome del modello della stampante e fare clic su **Vai**.
- 4 Fare clic su **Avvio**.
- 5 Fare clic su **(B) Connessione a un computer/uno smartphone**.
 - Le seguenti procedure sono destinate agli utenti Windows.
- 6 Fare clic su **Scarica**.
- 7 Eseguire il file scaricato.
- 8 Fare clic su **Avvia impostazione (Start Setup)**.

- 9 Seguire le istruzioni visualizzate sullo schermo.
 - Queste operazioni possono richiedere del tempo.
 - Per connettersi anche a uno smartphone, vedere "6-b. Connessione a uno smartphone" a pagina 5.



Utilizzo del CD-ROM di installazione

Fare doppio clic su **EasySetup.exe** nel CD-ROM, quindi continuare dal passo 3. Se non si dispone di una connessione Internet, aprire la cartella **win** nel CD-ROM e fare doppio clic su **SETUP.exe**. Verrà installato il driver della stampante.

6-b

Connessione a uno smartphone

Se si utilizzano più smartphone, eseguire questi passaggi su ciascuno smartphone.



1 Installare l'app "Canon PRINT Inkjet/SELPHY" sullo smartphone.



- Cercare "Canon PRINT" in App Store o Google Play.
- Accedere al sito Web Canon per scaricare l'app.



2 Aprire l'app installata e seguire le istruzioni visualizzate nell'app per aggiungere la stampante.

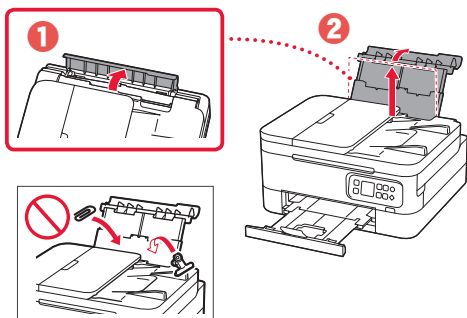


Una volta aggiunta la stampante, è possibile stampare dallo smartphone.
Per stampare foto, vedere "Caricamento della carta fotografica" a pagina 6.

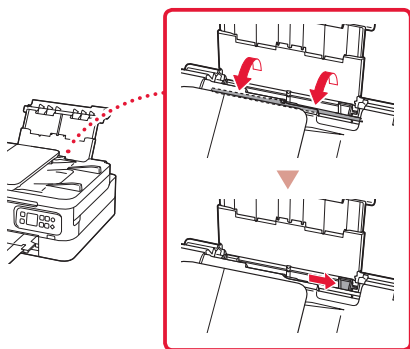
Caricamento della carta fotografica

La carta fotografica può essere caricata solo nel vassoio posteriore.

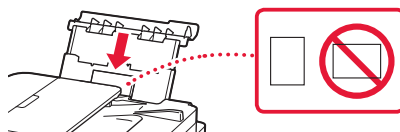
- 1 Aprire il coperchio del vassoio posteriore ed estendere il supporto per la carta.



- 2 Aprire il coperchio dell'alimentatore manuale e far scorrere la guida della carta di destra verso l'estrema destra.

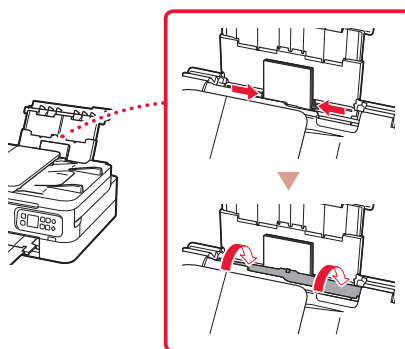


- 3 Caricare diversi fogli di carta fotografica con il lato di stampa rivolto verso l'alto.



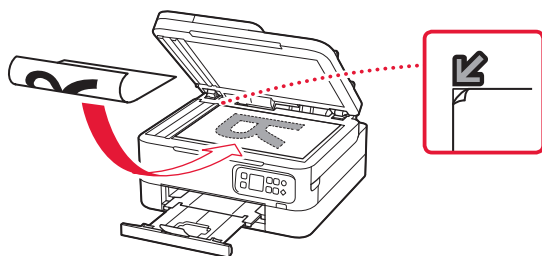
- 4 Allineare la guida della carta rispetto alla carta, quindi chiudere il coperchio dell'alimentatore manuale.

- Seguire le istruzioni visualizzate sullo schermo per impostare le informazioni per la carta caricata.



Copia

- 1 Accendere la stampante.
- 2 Caricare carta comune in formato Letter o A4.
- 3 Aprire il coperchio dei documenti e posizionare il documento rivolto verso il basso sul piano di lettura. Allineare il documento al segno di allineamento (↙).



- 4 Chiudere il coperchio dei documenti.
- 5 Premere il pulsante **OK**.
- 6 Selezionare **Copia impostazioni (Copy settings)**, quindi premere il pulsante **OK**.
- 7 Specificare le impostazioni di stampa utilizzando i pulsanti ▲, ▼ e **OK**.



- 8 Premere il pulsante **Avvio (Start)**.

Configurando a impressora



Para configurar, visite a URL

<https://ij.start.canon/TS7450>

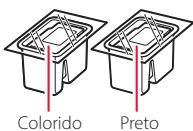
ou digitalize o código com seu dispositivo celular



• Para usuários sem um ambiente conectado à Internet, siga as instruções abaixo.

1. Conteúdo da Caixa

- Cartuchos FINE
- Cabo de alimentação
- CD-ROM de instalação
- Informações Importantes e Sobre Segurança
- Para Começar (este manual)



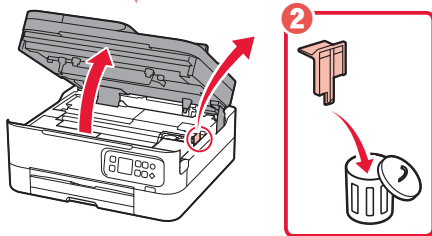
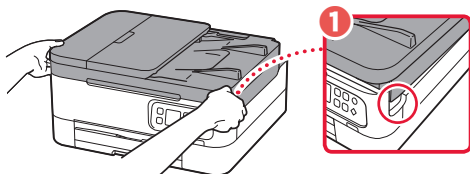
Colorido

Preto

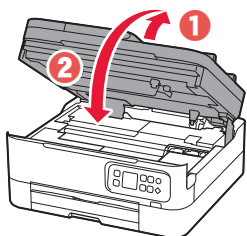
2. Removendo os materiais de embalagem



- 1 Remova e descarte quaisquer materiais de embalagem e a fita laranja.
- 2 Abra a unidade de digitalização/tampa, remova e descarte a fita laranja e o material de proteção que estão dentro.



- 3 Feche a unidade de digitalização/tampa.
 - Abra totalmente a unidade de digitalização/tampa e feche em seguida.

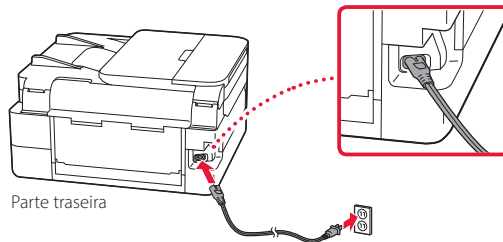


⚠ Cuidado
Cuidado com seus dedos.

3. Ligando a Impressora

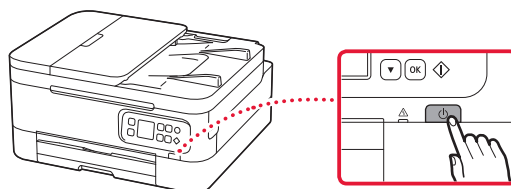


- 1 Conecte o cabo de alimentação.

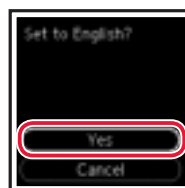


Parte traseira

- 2 Pressione o botão **ATIVADO (ON)**.



- 3 Use os botões ▲ e ▼ para seleccionar um idioma e pressione o botão **OK**.

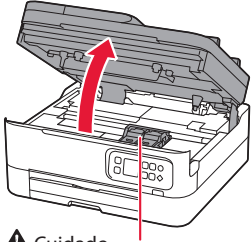


Configurando a impressora

4. Instalando os Cartuchos FINE



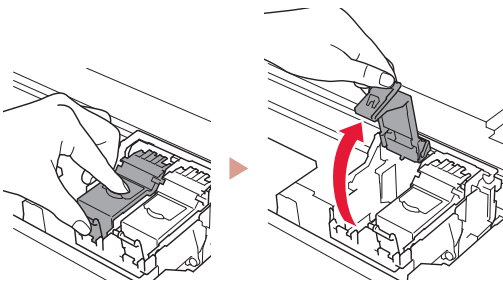
1 Abra a unidade de digitalização/tampa.



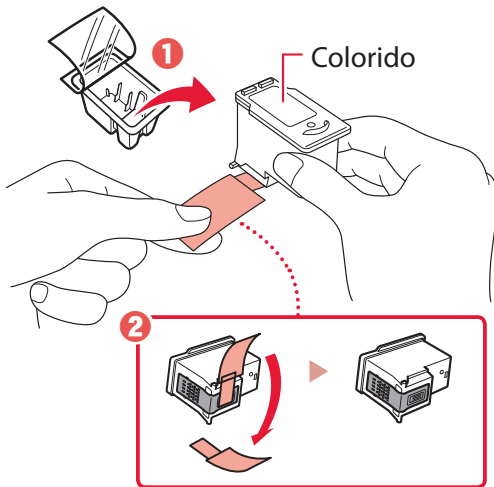
⚠ Cuidado

Não toque no suporte do cartucho FINE antes de ele parar de se mover.

2 Puxe e abra a tampa de fixação do cartucho de tinta no lado esquerdo.

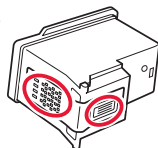


3 Remova o Cartucho FINE colorido do recipiente e remova a fita de proteção.

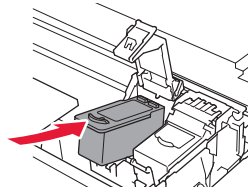


⚠ Importante

- Não toque na tinta na fita de proteção. Ela pode manchar suas mãos ou os objetos em volta.
- Não toque nas áreas mostradas na figura. Caso contrário, a impressora pode não imprimir corretamente.

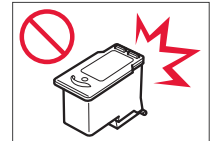


4 Coloque o Cartucho FINE colorido no suporte de cartucho FINE.

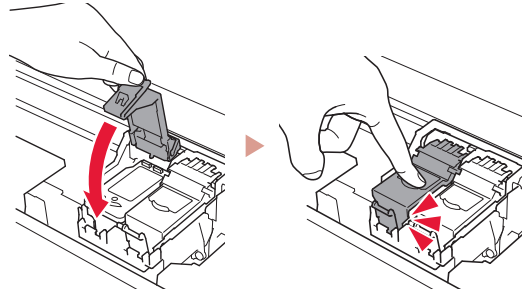


⚠ Importante

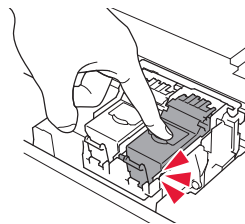
Não bata o cartucho FINE. Fazer isso pode causar problemas de funcionamento.



5 Empurre para baixo a tampa de fixação do cartucho de tinta firmemente até encaixar para fechá-la completamente.

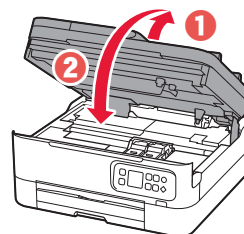


6 Repita as etapas 2 a 5 e instale também o cartucho FINE preto no lado direito.



7 Feche a unidade de digitalização/tampa.

- A impressora será inicializada.



⚠ Cuidado

Cuidado com seus dedos.

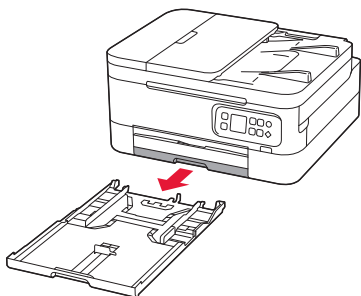
5. Colocando papel



1 Pressione o botão **OK**.

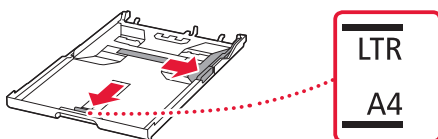


2 Remova o cassete da impressora.



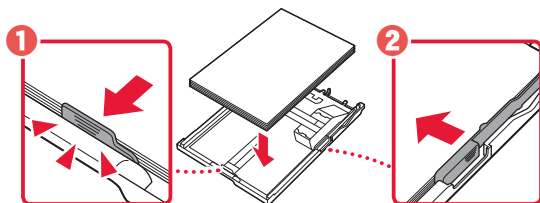
3 Separe as guias do papel.

- Deslize a guia do papel direita até a borda direita. Alinhe a guia do papel frontal com a marcação Letter ou A4.

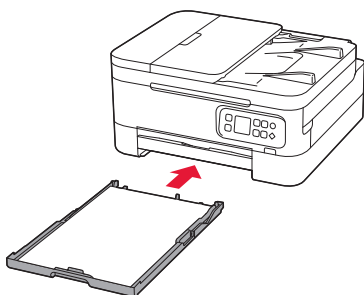


4 Coloque o papel.

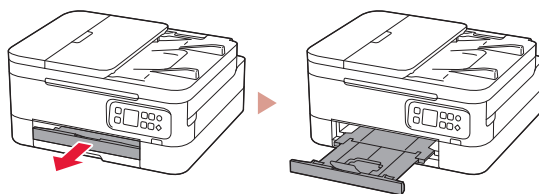
- Coloque 2 ou mais folhas de papel comum de tamanho A4 ou Carta.
- Coloque o papel na guia do papel frontal e alinhe a guia do papel direita com a largura do papel.



5 Substitua o cassete.



6 Puxe bandeja de saída do papel.



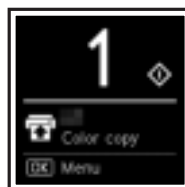
7 Pressione o botão **OK**.



Nota

O processo de alinhamento imprime duas folhas de dupla face. Não retire o papel nem use a impressora até o alinhamento estar completo.

8 Verifique se a tela a seguir aparece.



Se você for usar a impressora sem conectar nenhum outro dispositivo, a configuração estará concluída.

Selecione o método de conexão que melhor se adequa ao seu uso da impressora.

- Para usar a impressora sem conectá-la a nenhum outro dispositivo
 - ➔ A configuração foi concluída.
- Para utilizar a impressora com conexão a um computador ou smartphone
 - ➔ Prossiga para a página seguinte.

Qual dispositivo você está conectando?



Computador



Computador e
smartphone



Smartphone






6-a

Conectando a um Computador

Se você estiver usando vários computadores, execute estas etapas em cada computador.



- 1 Acesse o site Canon do seu computador.
 <https://ij.start.canon>
- 2 Selecione  **Configurar**.
- 3 Insira o nome do modelo da sua impressora e clique em **Ir**.
- 4 Clique em **Iniciar**.
- 5 Clique em **(B) Conectar a um Computador/Smartphone**.
 - As etapas a seguir são para usuários do Windows.
- 6 Clique em **Download**.
- 7 Execute o arquivo baixado.
- 8 Clique em **Iniciar configuração (Start Setup)**.

- 9 Siga as instruções na tela.
 - Estas operações podem levar algum tempo.
 - Para conectar a um smartphone também, consulte "6-b. Conectando a um smartphone" na página 5.



Usando o CD-ROM de instalação

Clique duas vezes em **EasySetup.exe** no CD-ROM e, em seguida, continue a partir da etapa 3. Se você não tiver uma conexão com a internet, abra a pasta **win** no CD-ROM clique duas vezes em **SETUP.exe**. Isso instalará o driver da impressora.

6-b

Conectando a um smartphone

Se você estiver usando vários smartphones, execute estas etapas em cada smartphone.



1 Instale o aplicativo "Canon PRINT Inkjet/SELPHY" no seu smartphone.



- Procure por "Canon PRINT" na App Store, ou Google Play.
- Acesse o site Canon para fazer o download do aplicativo.



2 Abra o aplicativo instalado e siga as instruções para adicionar sua impressora.

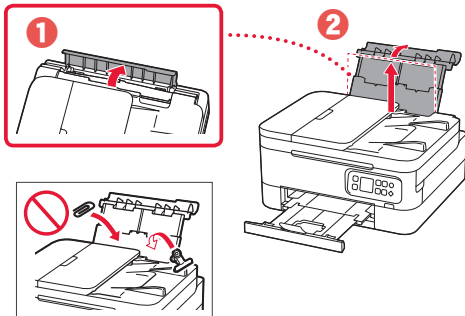


Depois que você adicionar a impressora, poderá imprimir do seu smartphone.
Para imprimir fotos, consulte "Colocando Papel Fotográfico" na página 6.

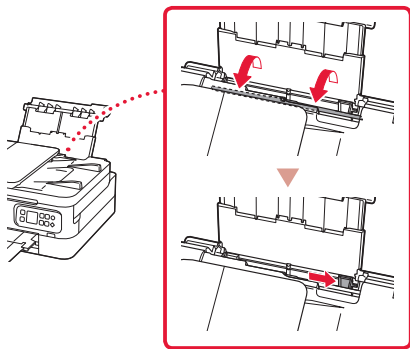
Colocando Papel Fotográfico

Papel fotográfico só pode ser carregado na bandeja traseira.

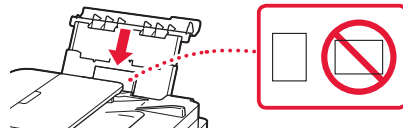
- 1 Abra a tampa da bandeja traseira e estenda o suporte de papel.



- 2 Abra a tampa do slot de alimentação e deslize a guia do papel do lado direito para a extrema direita.

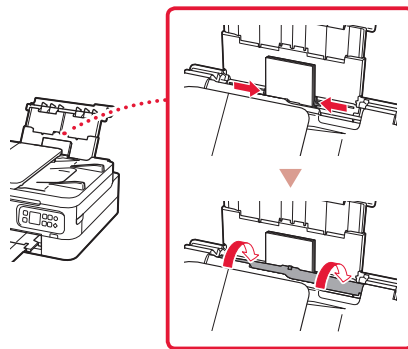


- 3 Coloque várias folhas de papel fotográfico com o lado a ser impresso voltado para cima.



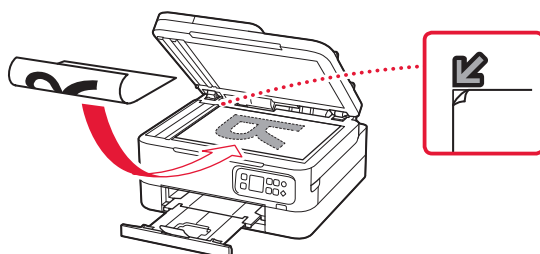
- 4 Alinhe a guia do papel ao papel e, em seguida, feche a tampa do slot de alimentação.

- Siga as instruções na tela para definir informações sobre o papel carregado.



Copiando

- 1 Ligue a Impressora.
- 2 Coloque o papel comum de tamanho A4 ou Carta.
- 3 Abra a tampa de documentos e coloque o documento voltado para baixo no rolo pressor. Posicione o documento com a marca de alinhamento (↙).



- 4 Feche a tampa de documentos.
- 5 Pressione o botão **OK**.
- 6 Selecione **Copiar configurações (Copy settings)** e pressione o botão **OK**.
- 7 Especifique as configurações de impressão usando os botões ▲, ▼ e **OK**.



- 8 Pressione o botão **Iniciar (Start)**.

Instalación de la impresora



Para la configuración, visite la URL

<https://ij.start.canon/TS7450>

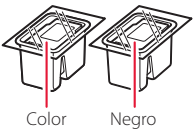
o bien escanee el código con su dispositivo móvil



● Los usuarios que no dispongan de un entorno conectado a Internet pueden seguir las instrucciones que se proporcionan a continuación.

1. Contenido de la caja

● Cartuchos FINE

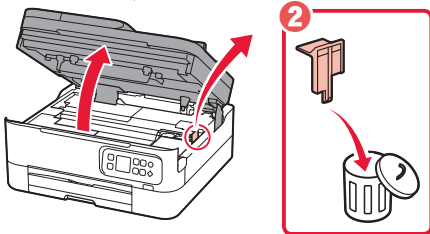
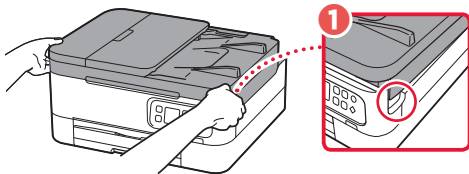


- Cable de alimentación
- CD-ROM de instalación
- Información de seguridad e información importante
- Guía de inicio (este manual)

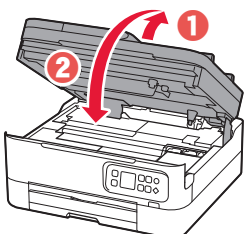
2. Retirar los materiales de protección



- 1 Retire y tire los materiales de protección y la cinta naranja.
- 2 Abra la cubierta/unidad de escaneado, retire y tire la cinta naranja y el material de protección que hay dentro.



- 3 Cierre la cubierta/unidad de escaneado.
 - Abra la cubierta/unidad de escaneado completamente y luego ciérrela.

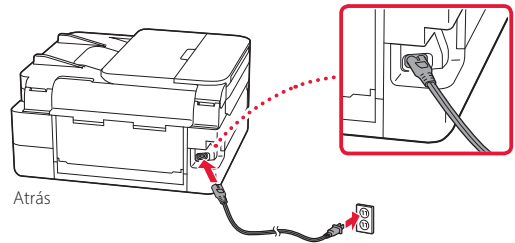


⚠ Precaución
Tenga cuidado con los dedos.

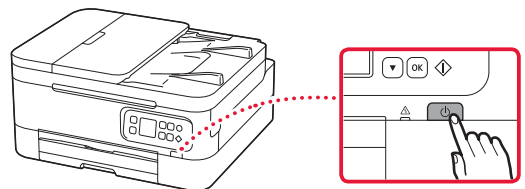
3. Encender la impresora



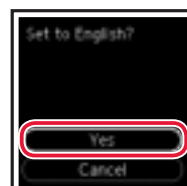
- 1 Conecte el cable de alimentación.



- 2 Pulse el botón **ACTIVADO (ON)**.



- 3 Utilice los botones ▲ y ▼ para seleccionar un idioma y, a continuación, pulse el botón **OK**.

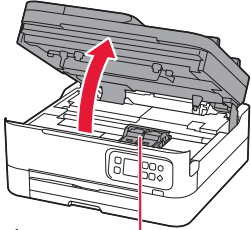


Instalación de la impresora

4. Instalar los cartuchos FINE



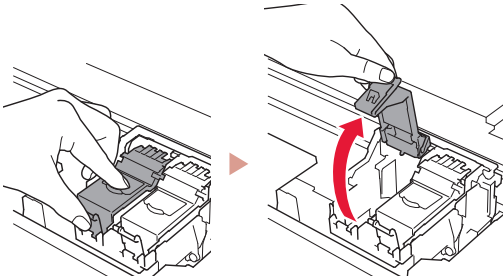
1 Abra la cubierta/unidad de escaneado.



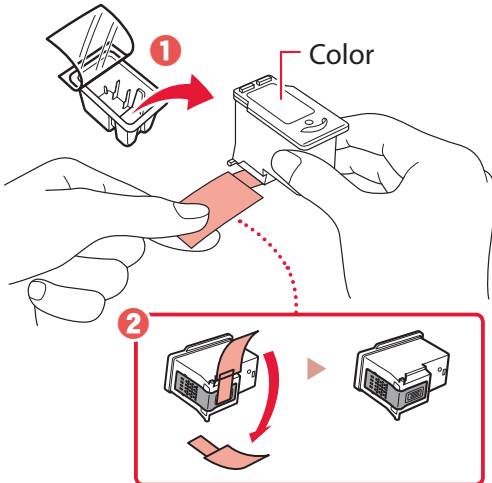
⚠ Precaución

No toque el soporte de cartucho FINE hasta que se detenga.

2 Pellizque y abra la tapa de bloqueo del cartucho de tinta del lado izquierdo.

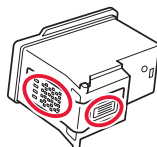


3 Retire el cartucho FINE de color del contenedor y retire la cinta protectora.

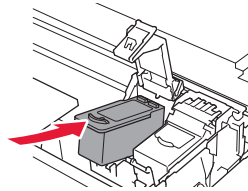


»»» Importante

- No toque la tinta de la cinta protectora. Podría manchar sus manos o los objetos que se encuentran a su alrededor.
- No toque las áreas que se muestran en la imagen. Si lo hace, puede que la impresora no imprima correctamente.

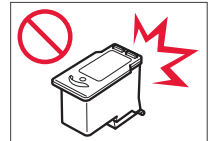


4 Coloque el cartucho FINE de color en el soporte de cartucho FINE.

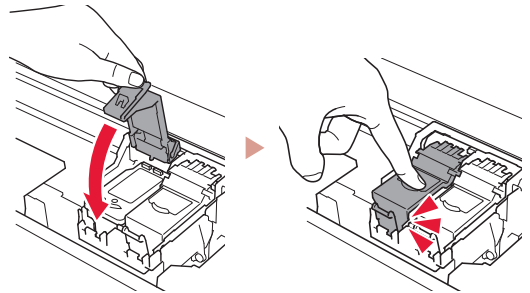


»»» Importante

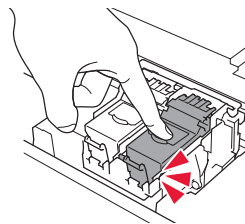
No golpee el cartucho FINE. Si se golpea, puede funcionar mal.



5 Empuje hacia abajo la tapa de bloqueo del cartucho de tinta firmemente hasta que encaje en su lugar para cerrarla por completo.

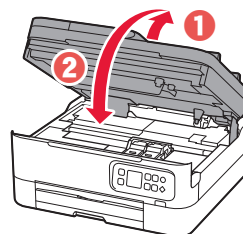


6 Repita los pasos del 2 al 5 e instale el cartucho FINE negro también en el lado derecho.



7 Cierre la cubierta/unidad de escaneado.

- La impresora comenzará a iniciarse.



⚠ Precaución

Tenga cuidado con los dedos.

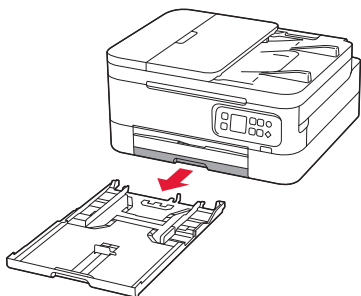
5. Carga del papel



1 Pulse el botón **OK**.

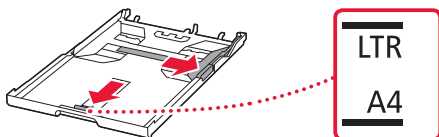


2 Retire el cassette de la impresora.



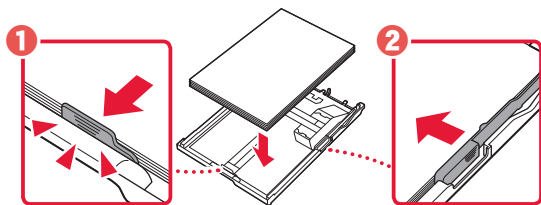
3 Separe las guías del papel deslizándolas.

- Deslice la guía del papel derecha hacia el borde derecho. Alinee la guía del papel frontal con la marca Carta o A4.

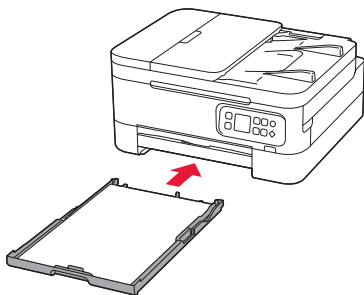


4 Cargue el papel.

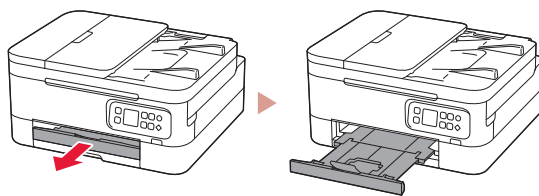
- Cargue 2 o más hojas de papel Carta o papel normal de tamaño A4.
- Coloque el papel delante de la guía del papel frontal y alinee la guía del papel derecha con el ancho del papel.



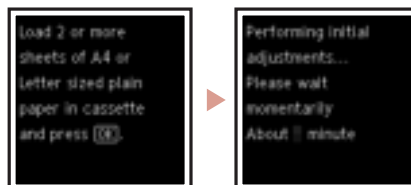
5 Reemplace el cassette.



6 Extraiga la bandeja de salida del papel.



7 Pulse el botón **OK**.



Nota

El proceso de alineación imprime dos hojas de doble cara. No extraiga el papel o use la impresora hasta que se haya completado la alineación.

8 Compruebe que aparezca la siguiente pantalla.



Si va a utilizar la impresora sin conectar con ningún otro dispositivo, la configuración ya se ha completado.

Seleccione el método de conexión que mejor se adapte al uso de la impresora.

- Para usar la impresora sin conectar con ningún otro dispositivo
 - ➔ Ha finalizado la configuración.
- Para usar la impresora conectándola a un ordenador o un teléfono inteligente
 - ➔ Continúe a la página siguiente.

¿Qué dispositivo va a conectar?



Ordenador



Ordenador y
teléfono inteligente






Teléfono inteligente

6-a

Conectar al ordenador

Si utiliza varios ordenadores, realice estos pasos en cada ordenador.



- 1 Acceda al sitio web de Canon desde el ordenador.
 <https://ij.start.canon>
- 2 Seleccione  **Configurar**.
- 3 Escriba el nombre del modelo de su impresora y haga clic en **Ir**.
- 4 Haga clic en **Iniciar**.
- 5 Haga clic en **(B) Conexión con un ordenador/teléfono inteligente**.
 - Los siguientes pasos son para usuarios de Windows.
- 6 Haga clic en **Descargar**.
- 7 Ejecute el archivo descargado.
- 8 Haga clic en **Iniciar configuración (Start Setup)**.

- 9 Siga las instrucciones que aparezcan en pantalla.
 - Estas operaciones pueden llevar algún tiempo.
 - Para conectar con un teléfono inteligente también, consulte "6-b. Conexión con un teléfono inteligente" en la página 5.



Uso del CD-ROM de instalación

Haga doble clic en **EasySetup.exe** en el CD-ROM y después continúe desde el paso 3. Si no tiene una conexión a Internet, abra la carpeta **win** en el CD-ROM y haga doble clic en **SETUP.exe**. Esto instalará el controlador de la impresora.

6-b

Conexión con un teléfono inteligente

Si utiliza varios teléfonos inteligentes, realice estos pasos en cada teléfono inteligente.



1 Instale la aplicación "Canon PRINT Inkjet/SELPHY" en su teléfono inteligente.



- Busque "Canon PRINT" en App Store o Google Play.
- Acceda al sitio web Canon para descargar la aplicación.



2 Abra la aplicación instalada y luego siga las instrucciones en la aplicación para agregar su impresora.

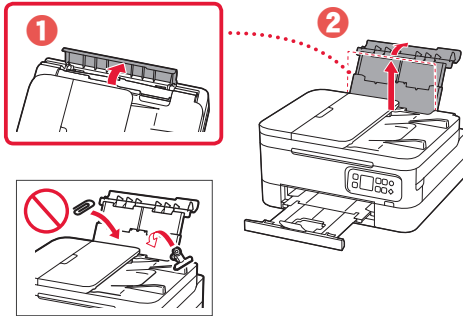


Cuando haya agregado la impresora, podrá imprimir desde su teléfono inteligente.
Para imprimir fotos, consulte "Carga de papel fotográfico" en la página 6.

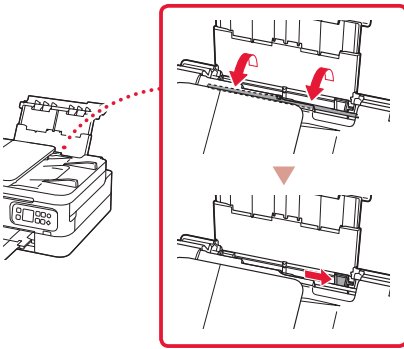
Carga de papel fotográfico

El papel fotográfico solo se puede cargar en la bandeja posterior.

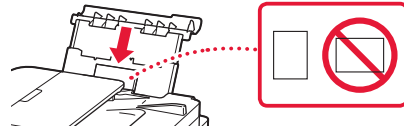
- 1 Abra la cubierta de la bandeja posterior y extienda el soporte del papel.



- 2 Abra la cubierta de la ranura de alimentación y deslice la guía del papel del lado derecho totalmente hacia la derecha.

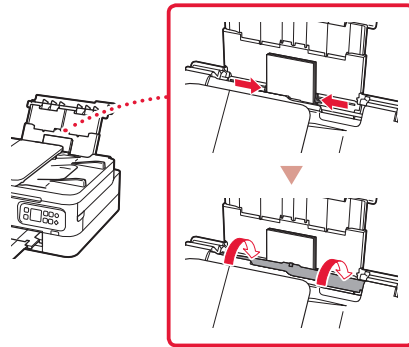


- 3 Cargue varias hojas de papel fotográfico con el lado de impresión hacia arriba.



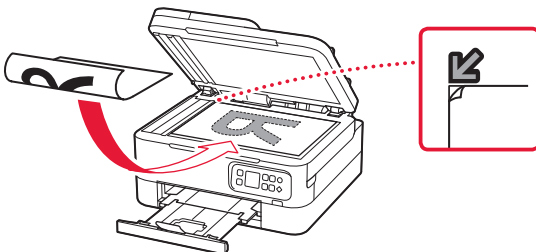
- 4 Alinee la guía del papel con el papel y, a continuación, cierre la cubierta de la ranura de alimentación.

- Siga las instrucciones en pantalla para definir la información para el papel cargado.



Copia

- 1 Encienda la impresora.
- 2 Cargue papel Carta o papel normal de tamaño A4.
- 3 Abra la cubierta de documentos y coloque el documento cara abajo en la platina. Alinee el documento con la marca de alineación (↙).



- 4 Cierre la cubierta de documentos.
- 5 Pulse el botón **OK**.
- 6 Seleccione **Configuración de copias (Copy settings)** y, a continuación, pulse el botón **OK**.
- 7 Especifique la configuración de impresión utilizando los botones ▲, ▼ y **OK**.



- 8 Pulse el botón **Iniciar (Start)**.

Ρύθμιση του εκτυπωτή



Για την εγκατάσταση, επισκεφθείτε το URL

<https://ij.start.canon/TS7450>

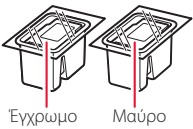


ή σαρώστε τον κωδικό με την κινητή συσκευή σας

• Αν είστε χρήστης χωρίς σύνδεση internet, ακολουθήστε τις παρακάτω οδηγίες.

1. Περιεχόμενα συσκευασίας

• Φυσίγγια FINE



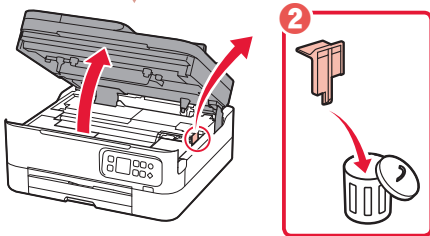
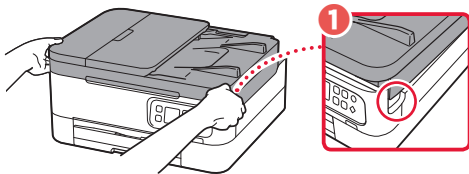
Έγχρωμο Μαύρο

- Καλώδιο τροφοδοσίας
- CD-ROM εγκατάστασης
- Πληροφορίες για την ασφάλεια και σημαντικές πληροφορίες
- Ξεκινώντας (αυτό το εγχειρίδιο)

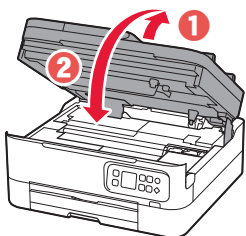
2. Αφαίρεση υλικών συσκευασίας



- 1 Αφαιρέστε και απορρίψτε τυχόν υλικά συσκευασίας και πορτοκαλί ταινία.
- 2 Ανοίξτε τη μονάδα σάρωσης / κάλυμμα, αφαιρέστε και απορρίψτε την πορτοκαλί ταινία και το προστατευτικό υλικό από το εσωτερικό.



- 3 Κλείστε τη μονάδα σάρωσης / κάλυμμα.
 - Ανοίξτε πλήρως τη μονάδα σάρωσης / κάλυμμα και, έπειτα, κλείστε τη.

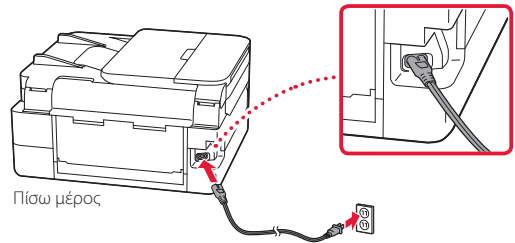


⚠ Προσοχή
Προσέχετε τα δάχτυλά σας.

3. Ενεργοποίηση του εκτυπωτή

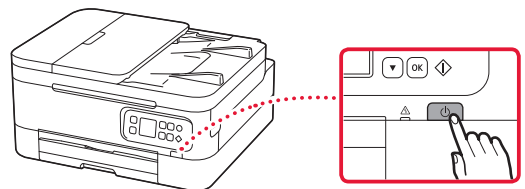


- 1 Συνδέστε το καλώδιο τροφοδοσίας.



Πίσω μέρος

- 2 Πατήστε το κουμπί ON.



- 3 Χρησιμοποιήστε τα κουμπιά ▲ και ▼ για να επιλέξετε γλώσσα και, στη συνέχεια, πατήστε το κουμπί OK.

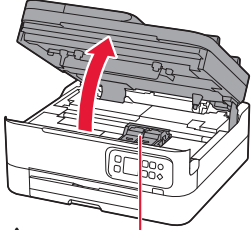


Ρύθμιση του εκτυπωτή

4. Τοποθέτηση των φυσιγγίων FINE



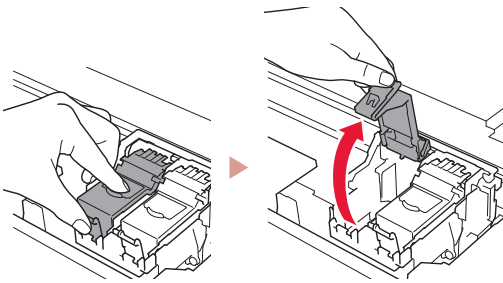
1 Ανοίξτε τη μονάδα σάρωσης / κάλυμμα.



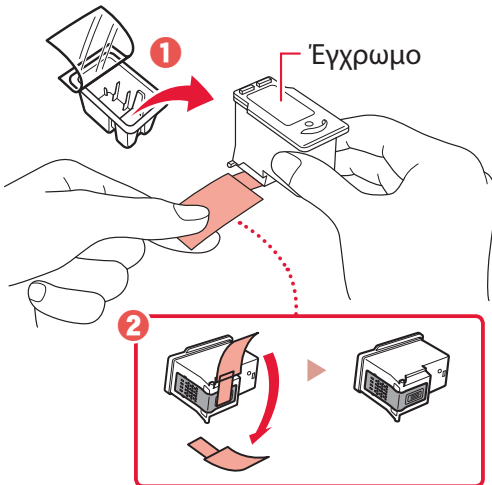
⚠ Προσοχή

Μην αγγίζετε τη θήκη φυσιγγίου FINE μέχρι να σταματήσει να κινείται.

2 Πιέστε και ανοίξτε το κάλυμμα ασφάλισης φυσιγγίου μελάνης στην αριστερή πλευρά.

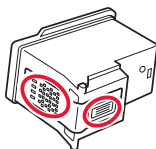


3 Αφαιρέστε το έγχρωμο φυσιγγίο FINE από τη συσκευασία και αφαιρέστε την προστατευτική ταινία.

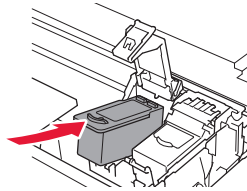


»»» Σημαντικό

- Μην αγγίζετε τη μελάνη που παραμένει στην προστατευτική ταινία. Μπορεί να λερώσετε τα χέρια σας ή τα γύρω αντικείμενα.
- Μην αγγίζετε τις περιοχές που υποδεικνύονται στην εικόνα. Διαφορετικά, ο εκτυπωτής ενδέχεται να μην εκτυπώνει σωστά.

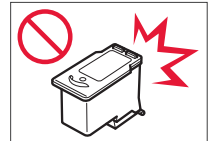


4 Τοποθετήστε το έγχρωμο φυσιγγίο FINE στη θήκη φυσιγγίου FINE.

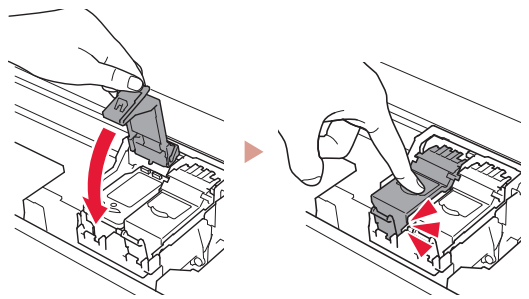


»»» Σημαντικό

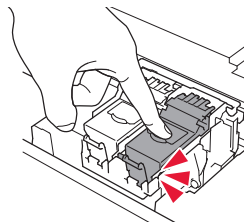
Μη χτυπάτε το φυσιγγίο FINE. Κάτι τέτοιο μπορεί να προκαλέσει δυσλειτουργία.



5 Πιέστε το κάλυμμα ασφάλισης φυσιγγίου μελάνης προς τα κάτω μέχρι να κουμπώσει στη θέση του.

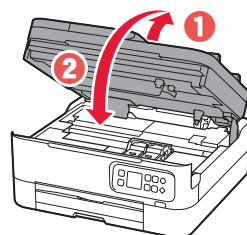


6 Επαναλάβετε τα βήματα 2 έως 5 και εγκαταστήστε και το μαύρο φυσιγγίο FINE στη δεξιά πλευρά.



7 Κλείστε τη μονάδα σάρωσης / κάλυμμα.

- Ο εκτυπωτής αρχίζει να προετοιμάζεται.



⚠ Προσοχή

Προσέχετε τα δάχτυλά σας.

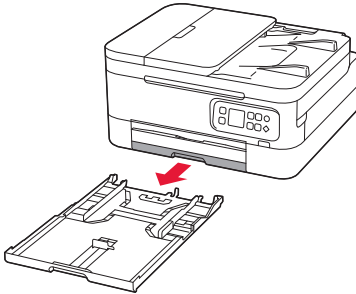
5. Τοποθέτηση χαρτιού



1 Πατήστε το κουμπί **OK**.

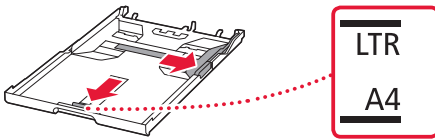


2 Αφαιρέστε την κασέτα από τον εκτυπωτή.



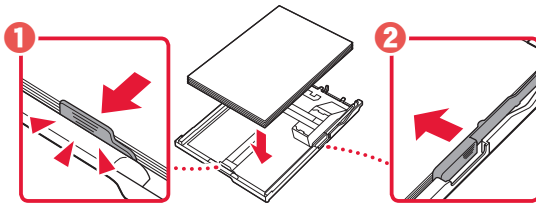
3 Σύρετε τους οδηγούς χαρτιού ώστε να τους διαχωρίσετε.

- Σύρετε το δεξιό οδηγό χαρτιού στο δεξιό άκρο. Ευθυγραμμίστε τον μπροστινό οδηγό χαρτιού με την ένδειξη Letter ή A4.

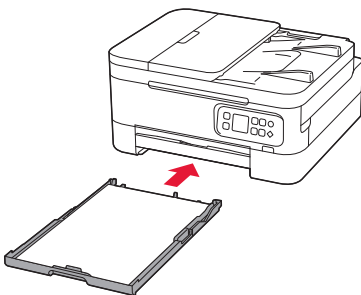


4 Τοποθετήστε χαρτί.

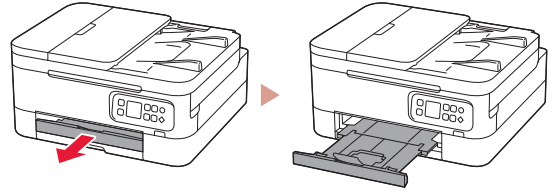
- Τοποθετήστε 2 ή περισσότερες σελίδες απλού χαρτιού μεγέθους Letter ή A4.
- Τοποθετήστε το χαρτί στον μπροστινό οδηγό χαρτιού και ευθυγραμμίστε τον δεξιό οδηγό χαρτιού με το πλάτος του χαρτιού.



5 Αντικαταστήστε την κασέτα.



6 Τραβήξτε έξω τη θήκη εξόδου χαρτιού.



7 Πατήστε το κουμπί **OK**.



»»» Σημείωση

Η διαδικασία ευθυγράμμισης εκτυπώνει δύο σελίδες διπλής όψης. Μην τραβάτε το χαρτί προς τα έξω και μην χρησιμοποιείτε τον εκτυπωτή μέχρι να ολοκληρωθεί η ευθυγράμμιση.

8 Βεβαιωθείτε ότι εμφανίζεται η ακόλουθη οθόνη.



Αν πρόκειται να χρησιμοποιήσετε τον εκτυπωτή χωρίς να συνδέσετε άλλες συσκευές, τότε η ρύθμιση έχει ολοκληρωθεί.

Επιλέξτε τη μέθοδο που ταιριάζει καλύτερα στον τρόπο που θα χρησιμοποιείτε τον εκτυπωτή.

- Για χρήση του εκτυπωτή χωρίς σύνδεση σε άλλες συσκευές
 - ➔ Η ρύθμιση έχει ολοκληρωθεί.
- Για χρήση του εκτυπωτή με σύνδεση σε υπολογιστή ή smartphone
 - ➔ Προχωρήστε στην επόμενη σελίδα.

Τι συσκευή σκοπεύετε να συνδέσετε;



Υπολογιστής



Υπολογιστής και
smartphone



Smartphone






6-a

Σύνδεση με υπολογιστή

Εάν χρησιμοποιείτε πολλούς υπολογιστές, εκτελέστε αυτά τα βήματα σε κάθε υπολογιστή.



- 1 Μεταβείτε στη διαδικτυακή τοποθεσία της Canon από τον υπολογιστή σας.
 <https://ij.start.canon>
- 2 Επιλέξτε  **Εγκατάσταση**.
- 3 Καταχωρίστε το όνομα μοντέλου του εκτυπωτή σας και κάντε κλικ στην επιλογή **Μετάβαση**.
- 4 Κάντε κλικ στο **Έναρξη**.
- 5 Κάντε κλικ στο **(B) Σύνδεση σε υπολογιστή/smartphone**.
 - Τα παρακάτω βήματα αφορούν τους χρήστες Windows.
- 6 Κάντε κλικ στο **Λήψη**.
- 7 Εκτελέστε το ληφθέν αρχείο.
- 8 Κάντε κλικ στο **Εκκίνηση ρύθμισης (Start Setup)**.

- 9 Ακολουθήστε τις οδηγίες στην οθόνη.
 - Αυτές οι λειτουργίες ενδέχεται να χρειαστούν κάποιο χρόνο.
 - Για να συνδέσετε και σε smartphone, ανατρέξτε στην ενότητα «6-b. Σύνδεση με Smartphone» στη σελίδα 5.



Χρήση του CD-ROM εγκατάστασης

Κάντε διπλό κλικ στο αρχείο **EasySetup.exe** που υπάρχει στο CD-ROM και, έπειτα, συνεχίστε από το βήμα 3. Αν δεν έχετε σύνδεση internet, ανοίξτε το φάκελο **win** στο CD-ROM και κάντε διπλό κλικ στο αρχείο **SETUP.exe**. Αυτή η ενέργεια θα εγκαταστήσει το πρόγραμμα οδήγησης του εκτυπωτή.

6-b

Σύνδεση με Smartphone

Εάν χρησιμοποιείτε πολλά smartphone, εκτελέστε αυτά τα βήματα σε κάθε smartphone.



1 Εγκαταστήστε την εφαρμογή «Canon PRINT Inkjet/SELPHY» στο smartphone σας.



- Κάντε αναζήτηση για το «Canon PRINT» στο App Store ή στο Google Play.
- Μεταβείτε στη διαδικτυακή τοποθεσία της Canon για λήψη της εφαρμογής.



2 Ανοίξτε την εγκατεστημένη εφαρμογή και ακολουθήστε τις οδηγίες που εμφανίζονται στην οθόνη στην εφαρμογή για να προσθέσετε τον εκτυπωτή σας.

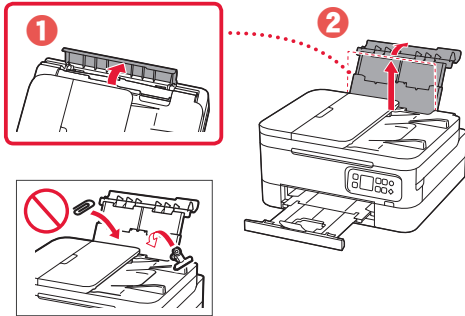


Αφού προσθέσετε τον εκτυπωτή σας, μπορείτε πλέον να εκτυπώνετε από το smartphone σας. Για να εκτυπώσετε φωτογραφίες, ανατρέξτε στην ενότητα «Τοποθέτηση φωτογραφικού χαρτιού» στη σελίδα 6.

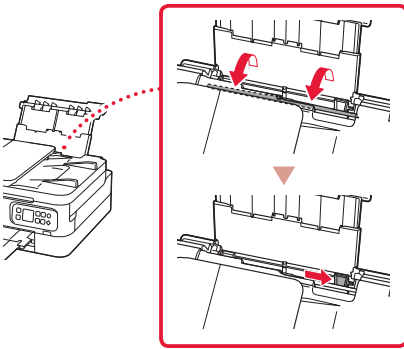
Τοποθέτηση φωτογραφικού χαρτιού

Το φωτογραφικό χαρτί μπορεί να τοποθετηθεί μόνο στην πίσω θήκη.

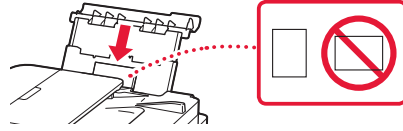
- 1 Ανοίξτε το κάλυμμα πίσω θήκης και εκτείnete την υποστήριξη χαρτιού.



- 2 Ανοίξτε το κάλυμμα υποδοχής τροφοδοσίας και σύρετε το δεξιό οδηγό χαρτιού προς τα δεξιά έως το τέρμα.

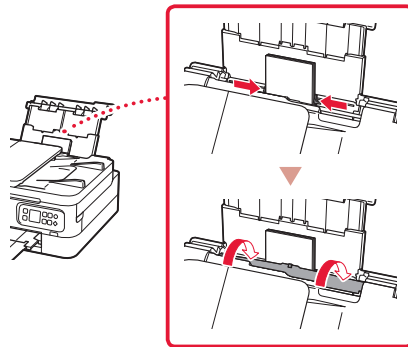


- 3 Τοποθετήστε πολλά φύλλα φωτογραφικού χαρτιού με την πλευρά εκτύπωσης στραμμένη προς τα πάνω.



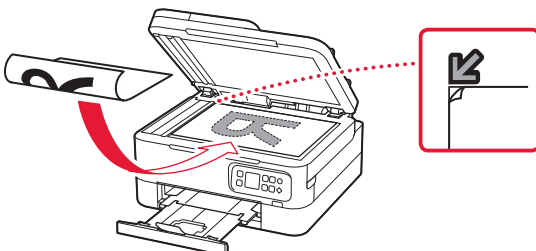
- 4 Ευθυγραμμίστε τον οδηγό χαρτιού με το χαρτί και, στη συνέχεια, κλείστε το κάλυμμα υποδοχής τροφοδοσίας.

- Ακολουθήστε τις οδηγίες στην οθόνη για να ορίσετε πληροφορίες για το τοποθετημένο χαρτί.



Αντιγραφή

- 1 Ενεργοποιήστε τον εκτυπωτή.
- 2 Τοποθετήστε απλό χαρτί μεγέθους Letter ή A4.
- 3 Ανοίξτε το κάλυμμα εγγράφων και τοποθετήστε το έγγραφο με την τυπωμένη πλευρά στραμμένη προς τα κάτω πάνω στην επιφάνεια σάρωσης. Ευθυγραμμίστε το έγγραφο με το σημάδι ευθυγράμμισης (↙).



- 4 Κλείστε το κάλυμμα εγγράφων.
- 5 Πατήστε το κουμπί **OK**.
- 6 Επιλέξτε **Ρυθμίσεις αντιγραφής (Copy settings)** και, στη συνέχεια, πατήστε το κουμπί **OK**.
- 7 Ορίστε τις ρυθμίσεις εκτύπωσης, χρησιμοποιώντας τα κουμπιά ▲, ▼ και **OK**.



- 8 Πατήστε το κουμπί **Έναρξη (Start)**.

Ställa in skrivaren



Besök webbadressen för Konfiguration

<https://ij.start.canon/TS7450>

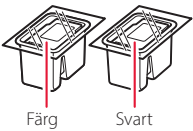


eller skanna koden med mobilenheten

- Användare utan en internetansluten miljö ska följa instruktionerna nedan.

1. Boxens innehåll

- FINE-kassetter

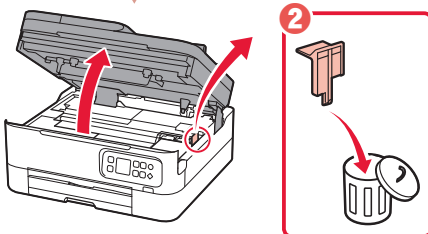
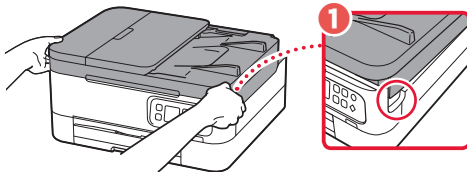


- Strömkabel
- Installations-CD
- Information om säkerhet och annan viktig information
- Uppstartsguide (denna handbok)

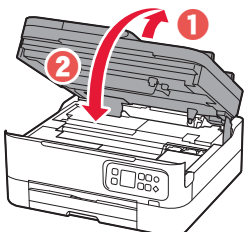
2. Ta bort förpackningsmaterial



- 1 Ta bort och kassera eventuellt förpackningsmaterial och orange tejp.
- 2 Öppna skannerenheten/luckan, ta bort och kassera den orange tejpens och skyddsmaterialet inuti.



- 3 Stäng skannerenheten/luckan.
 - Öppna skannerenheten/luckan helt och stäng den sedan.

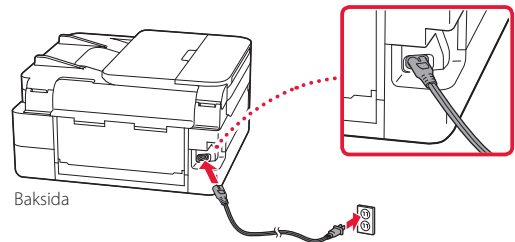


⚠ Försiktighet
Akta fingrarna.

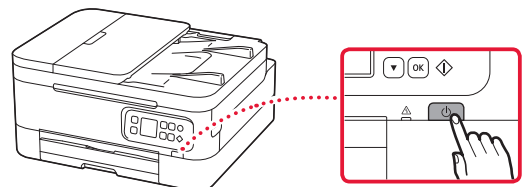
3. Slå på skrivaren



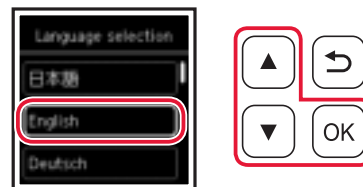
- 1 Anslut strömkabeln.



- 2 Tryck på **PÅ (ON)**.



- 3 Använd knappen ▲ eller knappen ▼ för att välja ett språk och tryck sedan på knappen **OK**.

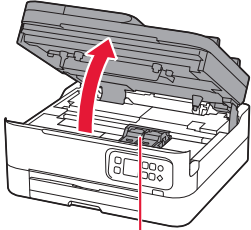


Ställa in skrivaren

4. Installera FINE-kassetterna



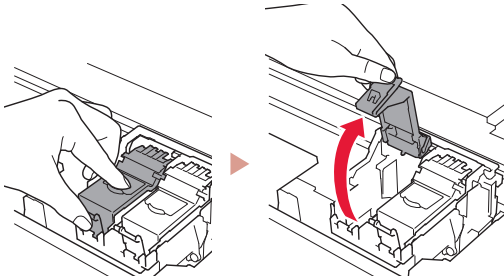
1 Öppna skannerenheten/luckan.



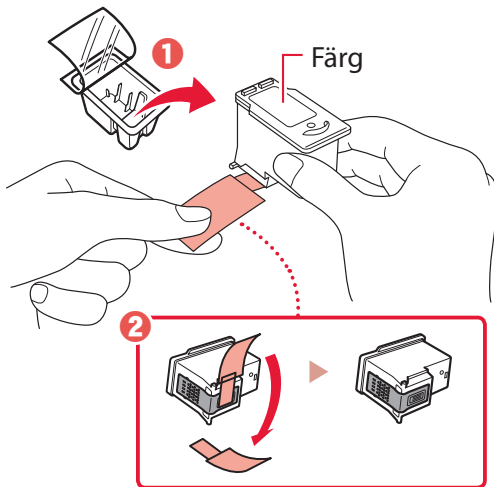
⚠ Försiktighet

Rör inte hållaren för FINE-kassetten förrän den har stannat.

2 Nyp tag i och öppna låslucken på bläckkassetten på vänster sida.

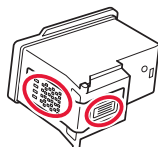


3 Ta bort färg-FINE-kassetten från behållaren och ta bort skyddstejpen.

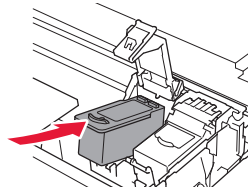


»»» Viktigt!

- Rör inte bläcket på skyddstejpen. Det kan ge fläckar på dina händer eller omgivande objekt.
- Rör inte områdena som visas på bilden. Annars kanske inte skrivaren fungerar korrekt.

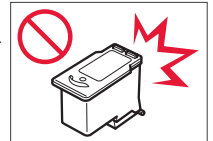


4 Sätt färg-FINE-kassetten i hållaren för FINE-kassetter.

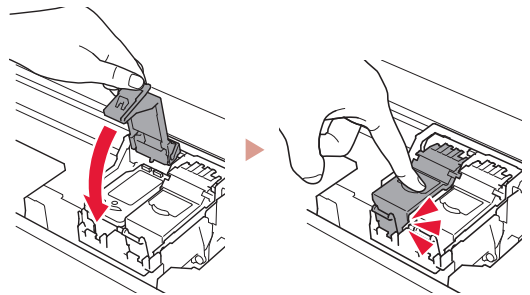


»»» Viktigt!

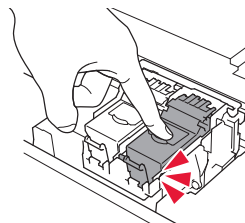
Låt inte FINE-kassetterna stöta i något. Det kan göra att den slutar fungera.



5 Tryck ned låslucken på bläckkassetten ordentligt tills den klickar på plats så att den stängs helt och hållet.

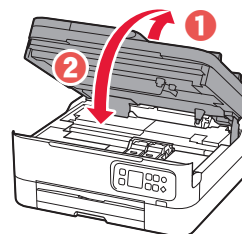


6 Upprepa steg 2 till 5 och installera den svarta FINE-kassetten också, på höger sida.



7 Stäng skannerenheten/luckan.

- Skrivaren börjar initialiseras.



⚠ Försiktighet

Akta fingrarna.

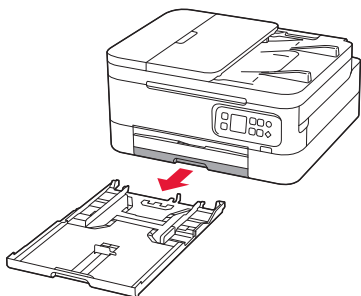
5. Lägga i papper



1 Tryck på OK.

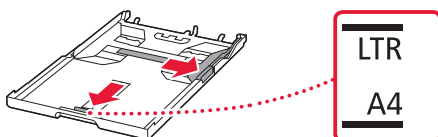


2 Ta bort kassetten från skrivaren.



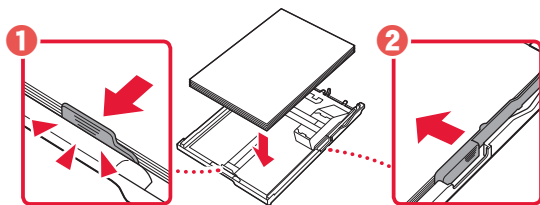
3 Skjut isär pappersledarna.

- Skjut den högra pappersledaren ut mot högerkanten. Justera den främre pappersledaren mot Letter- eller A4-märket.

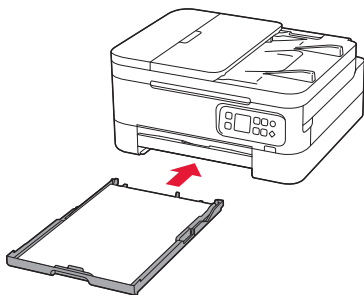


4 Fyll på papper.

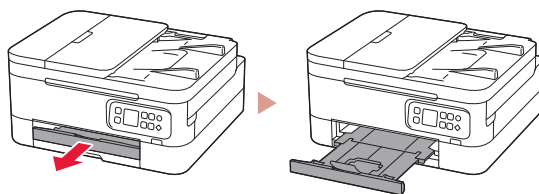
- Lägg i 2 eller fler ark vanligt Letter- eller A4-papper.
- Lägg papperet mot den främre pappersledaren och justera den högra pappersledaren efter papperets bredd.



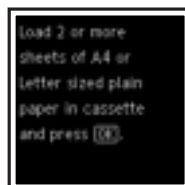
5 Byta kassett.



6 Dra ut utmatningsfacket.



7 Tryck på OK.



»»» Obs!

Justeringsprocessen skriver ut två dubbelsidiga ark. Dra inte ut papperet och använd inte skrivaren förrän justeringen är klar.

8 Kontrollera att följande skärm visas.



Inställningen är nu klar om du ska använda skrivaren utan att ansluta några andra enheter.

Välj anslutningsmetoden som bäst passar hur du ska använda skrivaren.

- Om du vill använda skrivaren utan att ansluta några andra enheter
 - ➔ Konfigurationen är nu klar.
- För att använda skrivaren genom att ansluta till en dator eller smarttelefon
 - ➔ Fortsätt till nästa sida.

Vilken enhet ansluter du?



Dator



Dator och
smarttelefon



Smarttelefon

6-a

Ansluta till dator

Om du använder flera datorer utför du dessa steg på varje dator.



- 1 Gå till Canons webbplats på datorn.
 <https://ij.start.canon>
- 2 Välj  **Konfigurera**.
- 3 Mata in skrivarens modellnamn och klicka på **Kör**.
- 4 Klicka på **Starta**.
- 5 Klicka på **(B) Ansluta till en dator/ smarttelefon**.
 - Följande steg gäller för Windows-användare.
- 6 Klicka på **Hämta**.
- 7 Starta den hämtade filen.
- 8 Klicka på **Starta inställningar (Start Setup)**.

- 9 Följ instruktionerna på skärmen.
 - Dessa åtgärder kan ta en stund.
 - Om du vill ansluta till en smarttelefon också, läs "6-b. Ansluta till en smarttelefon" på sida 5.



Använda installations-CD:n

Dubbelklicka på **EasySetup.exe** på CD:n och fortsätt sedan från steg 3. Om du inte har någon internetanslutning öppnar du **win**-mappen på CD:n och dubbelklickar på **SETUP.exe**. Då installeras skrivardrivrutinen.

6-b

Ansluta till en smarttelefon

Om du använder flera smarttelefoner utför du dessa steg på varje smarttelefon.



1 Installera appen "Canon PRINT Inkjet/SELPHY" på smarttelefonen.



- Sök efter "Canon PRINT" i App Store eller Google Play.
- Öppna Canons webbplats för att hämta appen.



2 Öppna den installerade appen och följ anvisningarna i appen för att lägga till skrivaren.

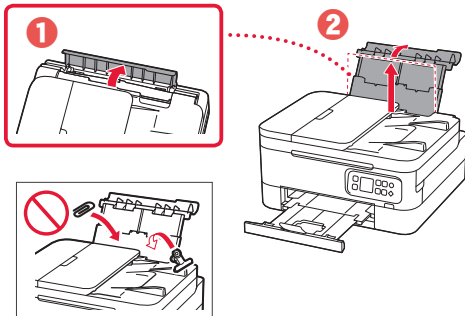


När du har lagt till skrivaren kan du skriva ut från din smarttelefon.
Läs "Fylla på fotopapper" på sida 6 för att skriva ut foton.

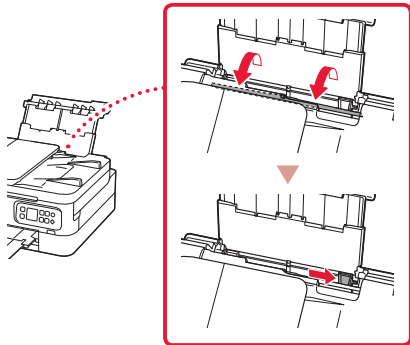
Fylla på fotopapper

Fotopapper kan endast fyllas på i det bakre facket.

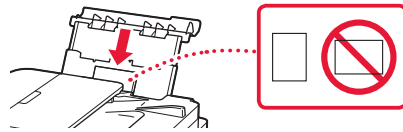
- 1 Öppna det bakre fackets lock och dra ut pappersstödet.



- 2 Öppna luckan för matningsfacket och skjut höger pappersledare längst ut till höger.

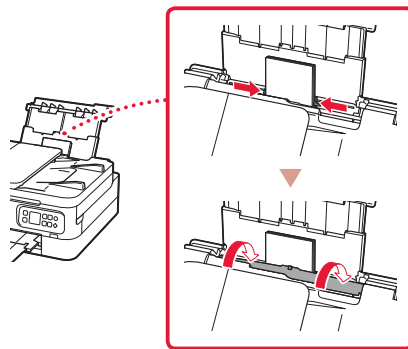


- 3 Lägg i flera ark fotopapper med utskriftssidan vänd uppåt.



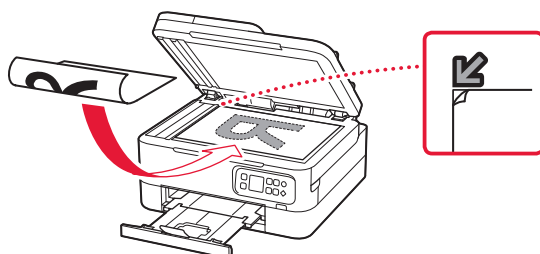
- 4 Justera pappersledaren mot papperet och stäng sedan luckan för matningsfacket.

- Följ instruktionerna på skärmen för att ange information om det påfyllda papperet.



Kopiera

- 1 Slå på skrivaren.
- 2 Lägg i vanligt Letter- eller A4-papper.
- 3 Öppna dokumentluckan och placera dokumentet med framsidan nedåt på glaset. Passa in dokumentet efter justeringsmärket (↙).



- 4 Stäng dokumentluckan.
- 5 Tryck på **OK**.
- 6 Välj **Kopieringsinställningar (Copy settings)** och tryck sedan på **OK**.
- 7 Ange utskriftsinställningar med knapparna ▲, ▼ och **OK**.



- 8 Tryck på **Start**.

Konfigurere skriveren



For oppsett, besøk følgende URL

<https://ij.start.canon/TS7450>

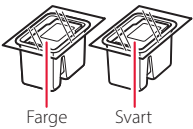
eller skann koden med mobilenheten



• Brukere uten et internett-tilkoblet miljø, kan følge instruksjonene nedenfor.

1. Innhold i esken

• FINE-kassetter

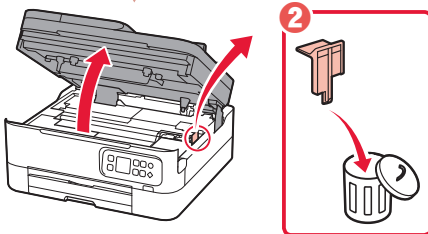
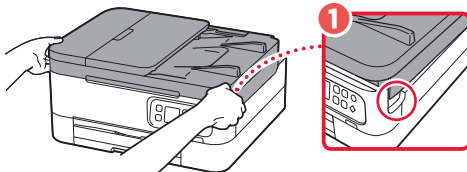


- Strømledning
- Installerings-CD-ROM
- Sikkerhetsinformasjon og viktig informasjon
- Komme i gang (denne manualen)

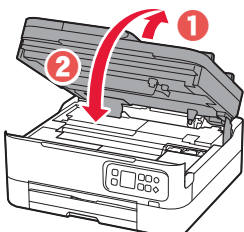
2. Fjerning av beskyttelsesmateriale



- 1 Fjern og kast eventuelt beskyttelsesmateriale og oransje tape.
- 2 Åpne skanneenheten/dekselet, fjern og kast den oransje tapen og beskyttelsesmaterialet inni.



- 3 Lukk skanneenheten/dekselet.
 - Åpne skanneenheten/dekselet helt, og lukk den/det igjen.

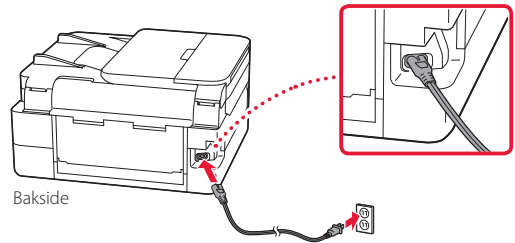


⚠ Forsiktig!
Pass på fingrene.

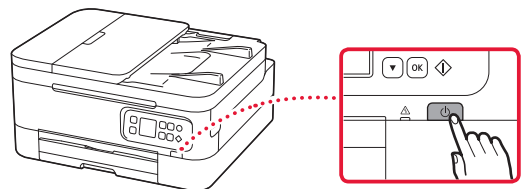
3. Slå på skriveren



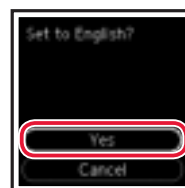
- 1 Koble til strømledningen.



- 2 Trykk på **PÅ (ON)**-knappen.



- 3 Bruk ▲ og ▼-knappene for å velge et språk, og trykk deretter på **OK**-knappen.

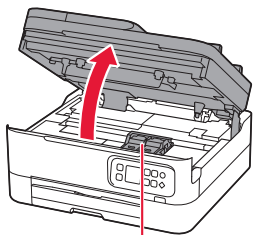


Konfigurere skriveren

4. Installere FINE-kassetten



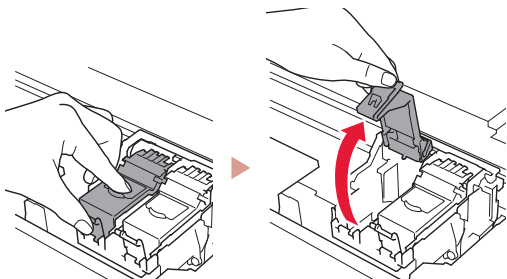
1 Åpne skanneenheten/dekselet.



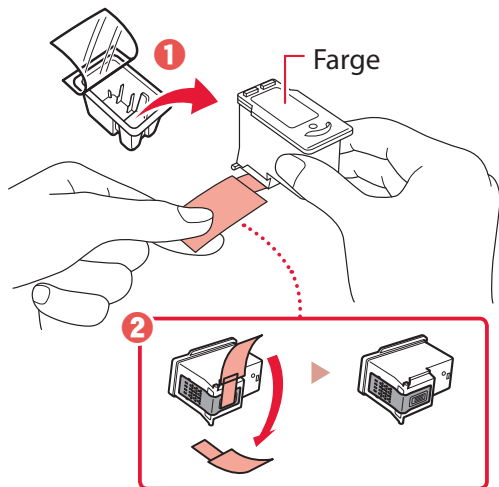
⚠ Forsiktig!

Ikke berør FINE-kassettholderen før den slutter å bevege seg.

2 Ta tak i og åpne låsedekselet for blekkassetter på venstre side.

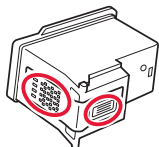


3 Ta FINE-kassetten for farge ut av beholderen og fjern beskyttelsestapen.

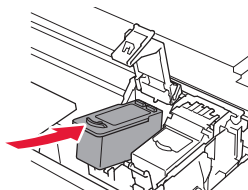


»»» Viktig!

- Ikke berør blekket på den beskyttende tapen. Det kan sette flekker på hendene dine eller andre gjenstander.
- Ikke berør områdene som er vist på figuren. Skriveren vil ellers ikke kunne skrive ut riktig.

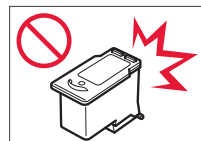


4 Sett FINE-kassetten med farger i FINE-kassettholderen.

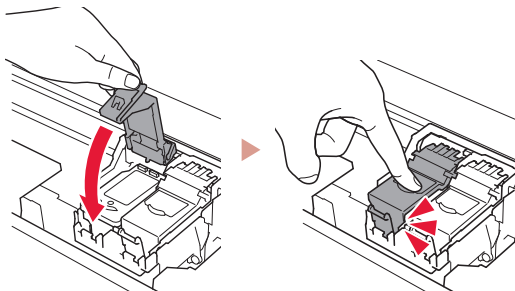


»»» Viktig!

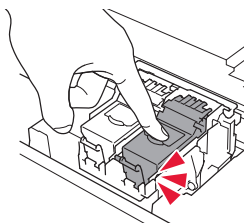
Ikke dunk på FINE-kassetten. Dette kan føre til at det oppstår en feil.



5 Skyv låsedekselet for blekkassetter godt ned helt til det klikker på plass, slik at det lukkes helt.

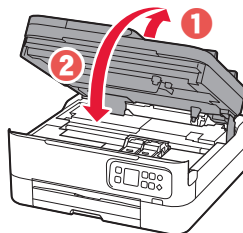


6 Gjenta trinn 2 til 5 og installer den svarte FINE-kassetten også, på høyre side.



7 Lukk skanneenheten/dekselet.

- Skriveren starter initialisering.



⚠ Forsiktig!

Pass på fingrene.

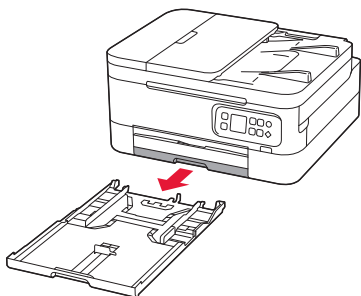
5. Legge i papir



- 1 Trykk på **OK**-knappen.

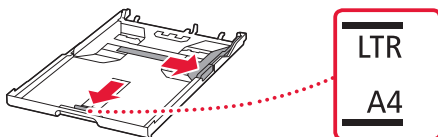


- 2 Fjern kassetten fra skriveren.



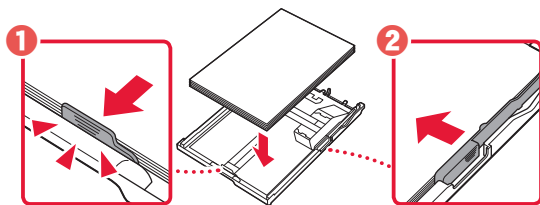
- 3 Skyv papirførerne fra hverandre.

- Skyv høyre papirfører mot høyre kant. Juster fremre papirfører med Letter- eller A4-merket.

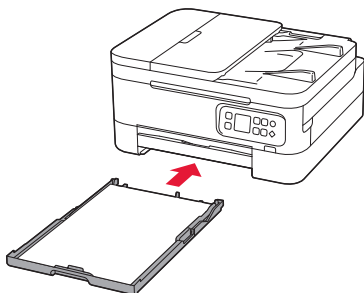


- 4 Legg i papir.

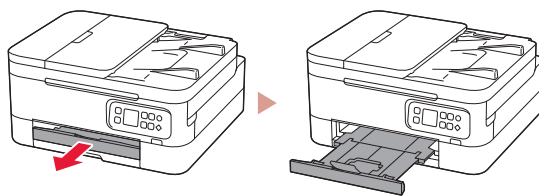
- Legg i 2 eller flere ark med vanlig papir i Letter- eller A4-størrelse.
- Plasser papiret mot fremre papirfører, og juster høyre papirfører ut fra bredden på papiret.



- 5 Skift kassetten.



- 6 Trekk ut papirutmatingsbrettet.



- 7 Trykk på **OK**-knappen.



Merke

Justeringsprosessen skriver ut to tsidige ark.

Ikke trekk ut papiret, eller bruk skriveren, før justeringen er ferdig.

- 8 Sjekk at følgende skjermbilde vises.



Oppsettet er nå ferdig hvis du ønsker å bruke skriveren uten å koble til andre enheter.

Velg tilkoblingsmetoden som passer best til hvordan du skal bruke skriveren.

- For å bruke skriveren uten å koble den til andre enheter
 - ➔ Oppsettet er nå ferdig.
- Bruke skriveren ved å koble til en datamaskin eller smarttelefon
 - ➔ Gå videre til neste side.

Hvilken enhet kobler du til?



Datamaskin



Datamaskin og
smarttelefon






Smarttelefon

6-a

Koble til en datamaskin

Hvis du bruker flere datamaskiner, utfører du disse trinnene på hver datamaskin.



- 1 Åpne Canon-nettstedet fra datamaskinen.
 <https://ij.start.canon>
- 2 Velg  **Oppsett**.
- 3 Angi skriverens modellnavn og klikk på **Gå**.
- 4 Klikk på **Start**.
- 5 Klikk på **(B) Koble til en datamaskin/ smarttelefon**.
 - Følgende trinn gjelder Windows-brukere.
- 6 Klikk på **Last ned**.
- 7 Kjør den nedlastede filen.
- 8 Klikk på **Start oppsett (Start Setup)**.

- 9 Følg instruksjonene på skjermen.
 - Disse operasjonene kan ta litt tid.
 - Se "6-b. Koble til en smarttelefon" på side 5 hvis du i tillegg vil koble til en smarttelefon.



Bruk av installerings-CD-ROM

Dobbelklikk på **EasySetup.exe** på CD-en, og fortsett deretter fra trinn 3. Hvis du ikke har internettforbindelse, kan du åpne **win**-mappen på CD-en og dobbeltklikke på **SETUP.exe**. Dette installerer skriverdriveren.

6-b Koble til en smarttelefon

Hvis du bruker flere smarttelefoner, utfører du disse trinnene på hver smarttelefon.



1 Installer "Canon PRINT Inkjet/SELPHY"-appen på smarttelefonen.



- Søk etter "Canon PRINT" i App Store eller Google Play.
- Åpne Canon-nettsiden for å laste ned appen.



2 Åpne den installerte appen og følg deretter instruksjonene i appen for å legge til skriveren.

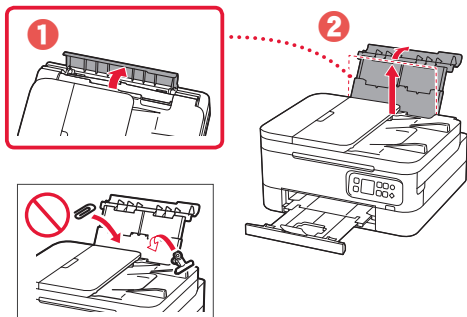


Når du har lagt til skriveren din, kan du skrive ut fra smarttelefonen.
Se "Legge i fotopapir" på side 6 for å skrive ut bilder.

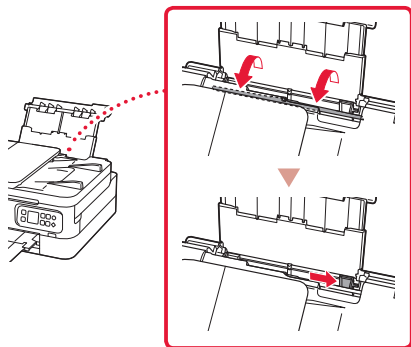
Legge i fotopapir

Fotopapir kan kun legges i bakskuffen.

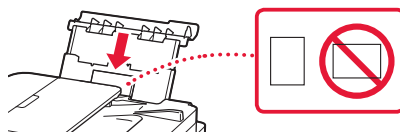
- 1 Åpne bakskuffdekelet, og forleng papirstøtten.



- 2 Åpne spordekelet for mating og skyv høyre papirfører helt mot høyre.

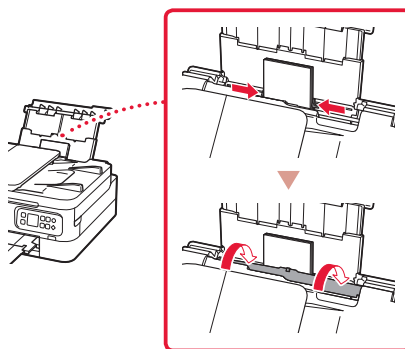


- 3 Legg i flere ark fotopapir med utskriftssiden opp.



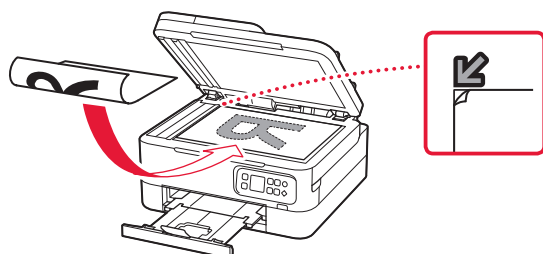
- 4 Juster papirføreren til papiret, og lukk deretter spordekelet for mating.

- Følg instruksjonene på skjermen for å angi informasjon for papiret som er lagt i.



Kopiere

- 1 Slå på skriveren.
- 2 Legg inn vanlig papir i Letter- eller A4-størrelse.
- 3 Åpne dokumentdekelet og plasser dokumentet med utskriftssiden ned på platen. Juster dokumentet etter justeringsmerket (↙).



- 4 Lukk dokumentdekelet.
- 5 Trykk på **OK**-knappen.
- 6 Velg **Kopiinnstillinger (Copy settings)**, og trykk deretter på **OK**-knappen.
- 7 Angi utskriftsinnstillinger med knappene ▲, ▼ og **OK**.



- 8 Trykk på **Start**-knappen.

Konfigurere printeren



Ved opsætning: Gå til URL-adressen

<https://ij.start.canon/TS7450>

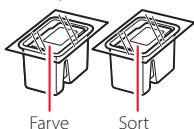


eller scan koden med din mobilenhed

• Brugere uden en internetforbindelse skal følge instruktionerne nedenfor.

1. Æskens indhold

• FINE-patroner



Farve

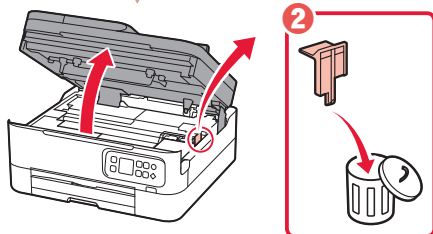
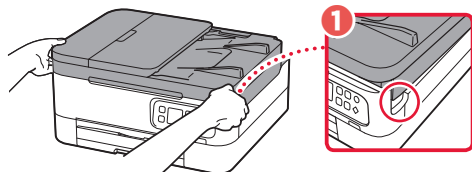
Sort

- Netledning
- Installations-cd-rom
- Sikkerhedsoplysninger og vigtige oplysninger
- Før du begynder (denne vejledning)

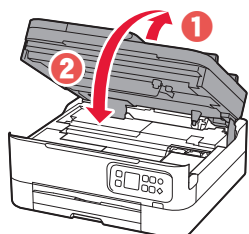
2. Fjern emballage



- 1 Fjern og bortskaf al emballage og orange tape.
- 2 Åbn scanningsenheden/dækslet, fjern den orange tape og det beskyttende materiale inde i printeren, og smid det væk.



- 3 Luk scanningsenheden/dækslet.
- Åbn scanningsenheden/dækslet helt, og luk det derefter.



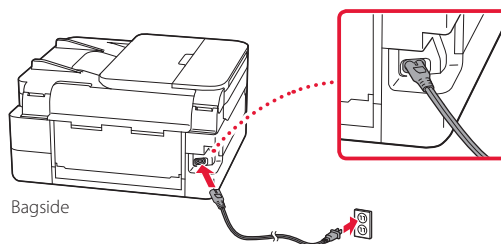
⚠ Forsigtig

Pas på dine fingre.

3. Tænd printeren

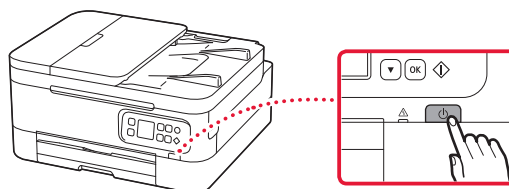


- 1 Tilslut netledningen.

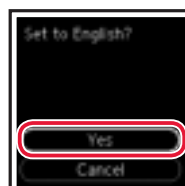


Bagside

- 2 Tryk på knappen **TIL (ON)**.



- 3 Brug knapperne ▲ og ▼ til at vælge et sprog, og tryk derefter på knappen **OK**.

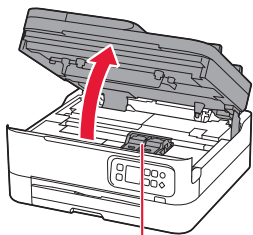


Konfigurere printeren

4. Installation af FINE-patroner



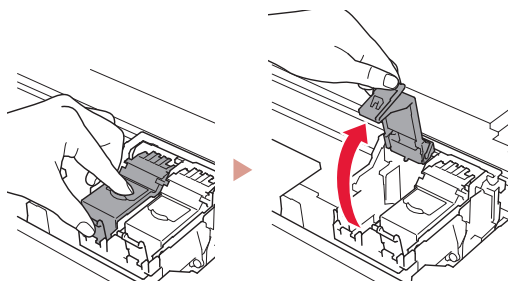
1 Åbn scanningsenheden/dækslet.



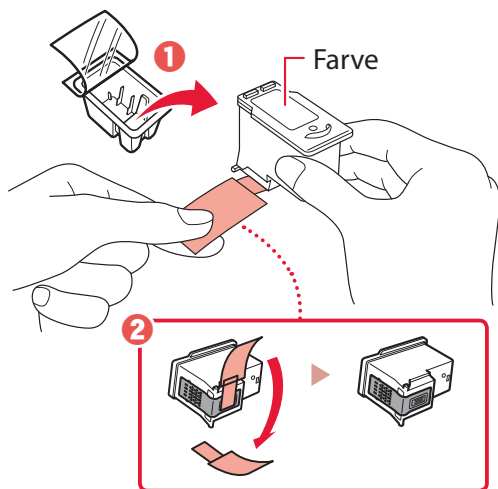
⚠ Forsigtig

Undgå at røre ved FINE-patronholderen, før den stopper.

2 Knib sammen, og åbn låsedækslet til blækpatronen på venstre side.

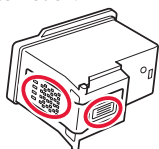


3 Tag farve-FINE-patronen ud af holderen, og fjern beskyttelsestapen.

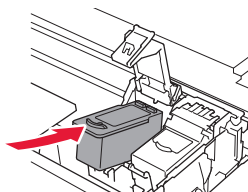


»»» Vigtigt

- Rør ikke ved blækket på den beskyttende tape. Det kan give pletter på dine hænder og genstande i nærheden.
- Rør ikke de områder, der vises på figuren. Hvis du gør det, kan printeren muligvis ikke udskrive korrekt.

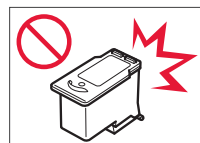


4 Sæt farve-FINE-patronen i FINE-patronholderen.

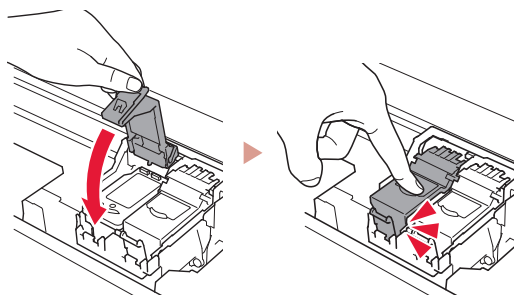


»»» Vigtigt

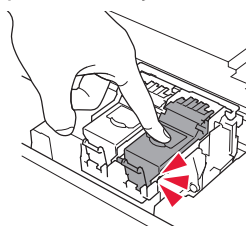
Pas på, at du ikke kommer til at støde FINE-patronen mod noget. Det kan medføre funktionsfejl.



5 Skub låsedækslet til blækpatronen ned, indtil det klikker på plads og låses fast.

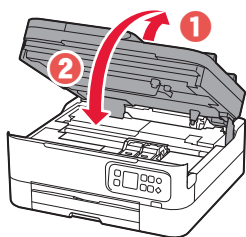


6 Gentag trin 2 til 5, og indsæt den sorte FINE-patron til højre.



7 Luk scanningsenheden/dækslet.

- Printeren initialiseres.



⚠ Forsigtig

Pas på dine fingre.

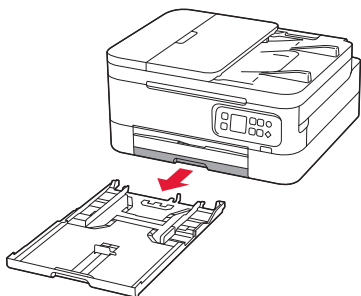
5. Ilægning af papir



- 1 Tryk på knappen **OK**.

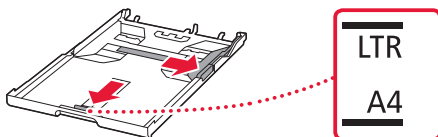


- 2 Fjern kassetten fra printeren.



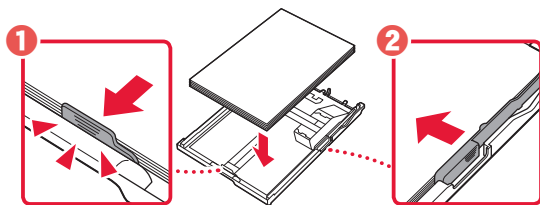
- 3 Skub papirstyrene fra hinanden.

- Skub højre papirstyr til den højre kant. Juster det forreste papirstyr med Letter- eller A4-mærket.

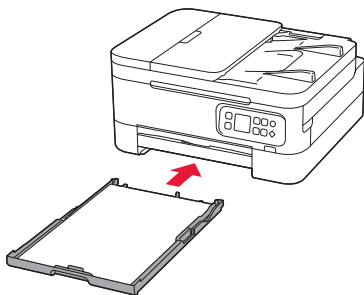


- 4 Ilæg papir.

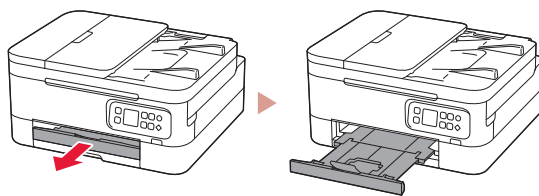
- Ilæg 2 eller flere ark almindeligt papir i Letter- eller A4-størrelse.
- Placer papiret mod det forreste papirstyr, og juster derefter det højre papirstyr med bredden af papiret.



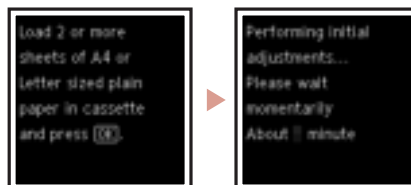
- 5 Sæt kassetten ind igen.



- 6 Træk udbakken til papir ud.



- 7 Tryk på knappen **OK**.



»»» Bemærk

Under justeringsprocessen udskrives der to dobbeltsidede ark. Træk ikke papiret ud, og brug ikke printeren, før justeringen er fuldført.

- 8 Tjek, at følgende skærbillede vises.



Hvis du vil bruge printeren uden at tilslutte andre enheder, er opsætningen færdig nu.

Vælg den forbindelsesmetode, der passer bedst til den måde, du vil bruge printeren på.

- For at bruge printeren uden tilslutning af andre enheder
 - ➔ Opsætningen er nu fuldført.
- For at bruge printeren ved at tilslutte til en computer eller smartphone
 - ➔ Fortsæt på næste side.

Hvilken enhed tilslutter du?



Computer



Computer og
smartphone






Smartphone

6-a

Tilslutning til en computer

Hvis du bruger flere computere, skal du udføre disse trin på hver computer.



- 1 Gå til Canon-webstedet fra din computer.
 <https://ij.start.canon>
- 2 Vælg  **Konfiguration**.
- 3 Skriv printerens modelnavn, og klik på **Ok**.
- 4 Klik på **Start**.
- 5 Klik på **(B) Tilslutning til en computer/ smartphone**.
 - Følgende trin gælder for Windows-brugere.
- 6 Klik på **Hent**.
- 7 Kør den downloadede fil.
- 8 Klik på **Start opsætning (Start Setup)**.

- 9 Følg instruktionerne på skærmen.
 - Disse handlinger kan tage lidt tid.
 - Hvis du også vil tilslutte en smartphone, skal du se "6-b. Tilslutning til en smartphone" på side 5.



Brug af installations-cd-rom'en

Dobbeltklik på **EasySetup.exe** på cd-rom'en, og fortsæt derefter fra trin 3. Hvis du ikke har en internetforbindelse, skal du åbne mappen **win** på cd-rom'en og dobbeltklikke på **SETUP.exe**. Herefter installeres printerdriveren.

6-b Tilslutning til en smartphone

Hvis du bruger flere smartphones, skal du udføre disse trin på hver smartphone.



1 Installer appen "Canon PRINT Inkjet/SELPHY" på din smartphone.



- Søg efter "Canon PRINT" i App Store eller Google Play.
- Gå til Canon-webstedet for at downloade appen.



2 Åbn den installerede app, og følg instruktionerne på skærmen i appen for at tilføje din printer.

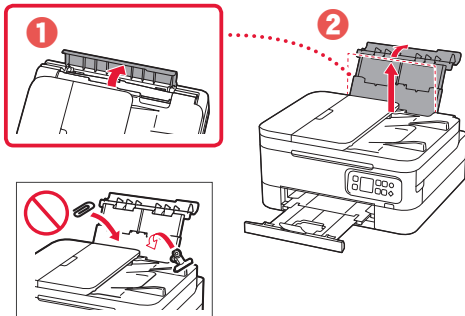


Når du har tilføjet din printer, kan du udskrive fra din smartphone.
Hvis du vil udskrive fotos, skal du se "Ilægning af fotopapir" på side 6.

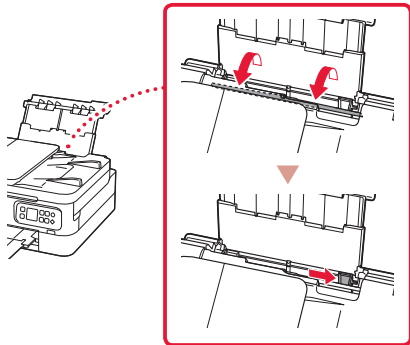
Ilægning af fotopapir

Der kan kun lægges fotopapir i den bagerste bakke.

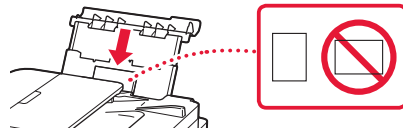
- 1 Åbn dækslet til bagerste bakke, og træk papirstøtten ud.



- 2 Åbn arkføderdækslet, og skub det højre papirstyr helt ud til højre.

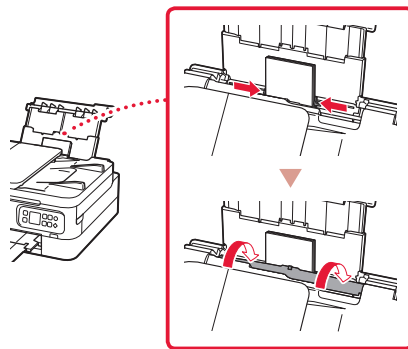


- 3 Ilæg flere ark fotopapir med udskriftssiden opad.



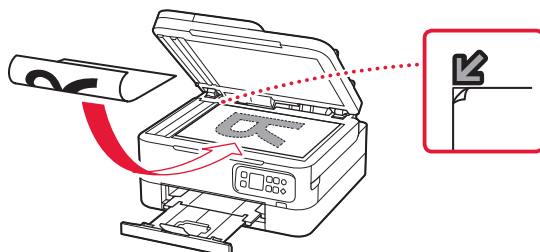
- 4 Juster papirstyret med papiret, og luk derefter arkføderdækslet.

- Følg instruktionerne på skærmen for at angive oplysninger for det ilagte papir.



Kopiering

- 1 Tænd printeren.
- 2 Ilæg almindeligt papir i Letter- eller A4-størrelse.
- 3 Åbn dokumentdækslet, og placer dokumentet med forsiden nedad på pladen. Juster dokumentet med justeringsmærket (↙).



- 4 Luk dokumentdækslet.
- 5 Tryk på knappen **OK**.
- 6 Vælg **Kopieringsindstillinger (Copy settings)**, og tryk derefter på knappen **OK**.
- 7 Angiv udskrivningsindstillinger ved hjælp af knapperne ▲, ▼ og **OK**.



- 8 Tryk på knappen **Start**.

Tulostimen asennus



Lisätietoja asennuksesta

saat URL-osoitteesta

<https://ij.start.canon/TS7450>

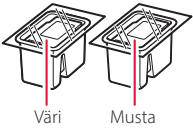


tai skannaamalla koodin mobiililaitteellasi

• Jos käytettävissä ei ole Internet-yhteyttä, toimi alla olevien ohjeiden mukaisesti.

1. Paketin sisällys

• FINE-kasetit



• Virtajohto

• Asennus-CD

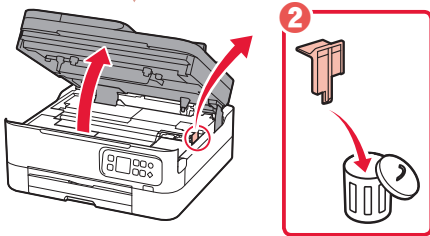
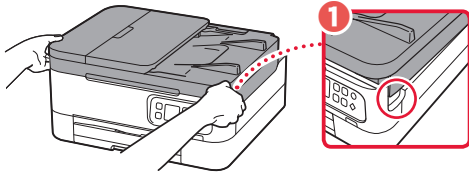
• Turvallisuus ja tärkeitä tietoja

• Aloitusopas (tämä käyttöopas)

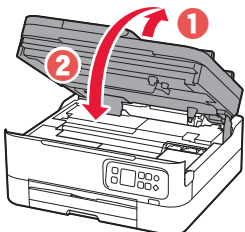
2. Pakkausmateriaalien poistaminen



- 1 Poista kaikki pakkausmateriaalit ja oranssi teippi.
- 2 Avaa skannausyksikkö/kansi, poista oranssi teippi ja suojamateriaali sisäpuolelta.



- 3 Sulje skannausyksikkö/kansi.
 - Avaa skannausyksikkö/kansi täysin ja sitten sulje se.

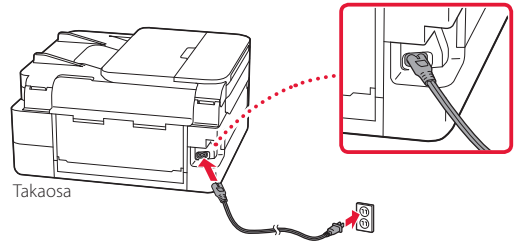


▲ Huomio
Varo sormiasi.

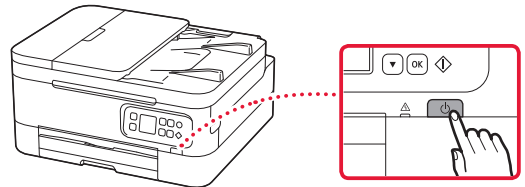
3. Virran kytkeminen tulostimeen



- 1 Kytke virtajohto.



- 2 Paina **KÄYTTÖSSÄ (ON)** -painiketta.



- 3 Valitse ▲- ja ▼-painikkeilla kieli ja paina sitten **OK**-painiketta.

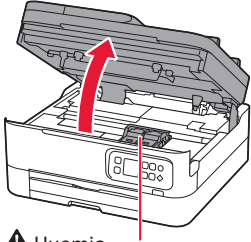


Tulostimen asennus

4. FINE-kasettien asentaminen



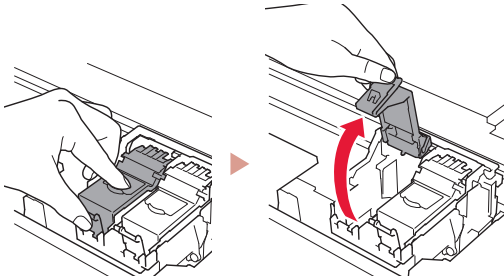
1 Avaa skannausyksikkö/kansi.



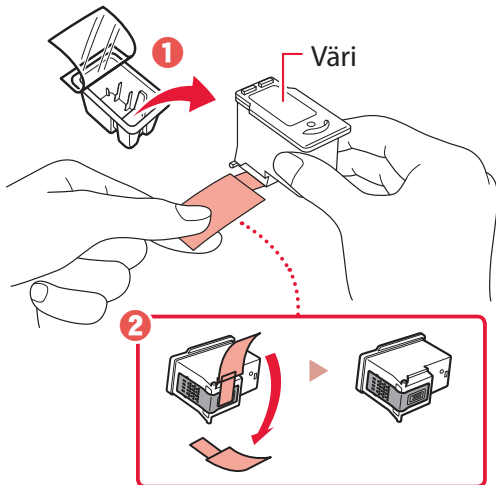
⚠ Huomio

Älä koske FINE-kasetin pidikkeeseen, ennen kuin se pysähtyy.

2 Avaa mustekasetin lukituskansi vasemmalla puolella.

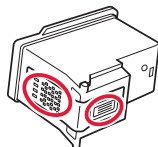


3 Poista värillinen FINE-kasetti pakkauksesta ja irrota suojateippi.

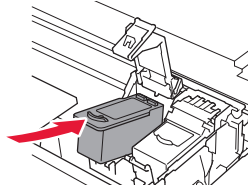


»»» Tärkeää

- Älä koske suojateipissä olevaan musteeseen. Se saattaa liata kätesi tai ympärillä olevia esineitä.
- Älä koske kuvassa merkittyihin alueisiin. Tulostin välttämättä tulosta muussa tapauksessa oikein.

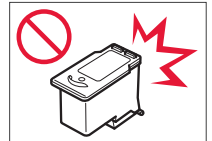


4 Aseta värillinen FINE-kasetti FINE-kasetin pidikkeeseen.

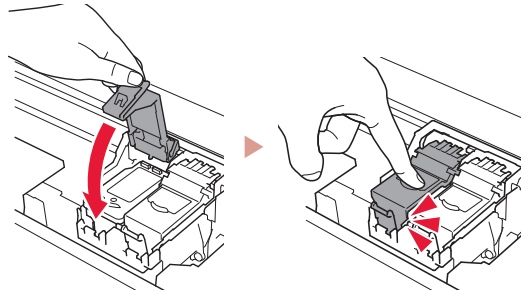


»»» Tärkeää

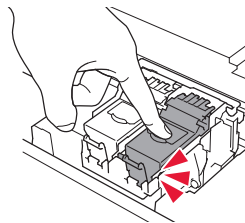
Älä pumpkaa FINE-kasettia. Se voi aiheuttaa toimintahäiriön.



5 Sulje mustekasetin lukituskansi painamalla sitä kevyesti, kunnes se napsahtaa paikalleen.

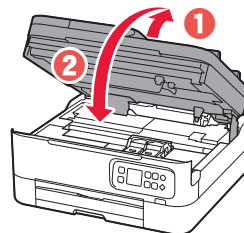


6 Toista vaiheet 2–5 ja asenna myös musta FINE-kasetti oikealle.



7 Sulje skannausyksikkö/kansi.

- Tulostin aloittaa alustamisen.



⚠ Huomio

Varo sormiasi.

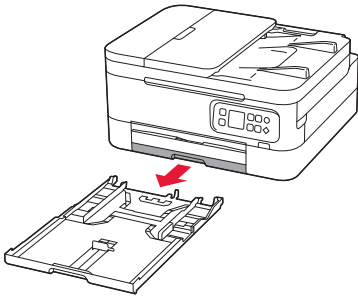
5. Paperin asettaminen



1 Paina OK-painiketta.

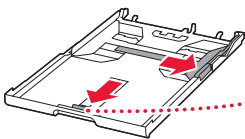


2 Poista kasetti tulostimesta.



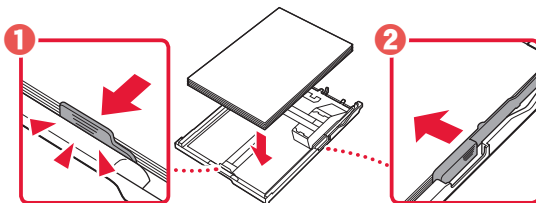
3 Liu'uta paperiohjaimet erilleen.

- Liu'uta oikeanpuoleinen paperiohjain oikeaan reunaan. Kohdista etummainen paperiohjain Letter- tai A4-merkin kanssa.

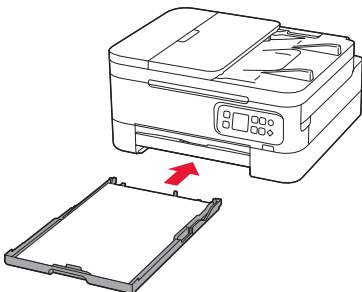


4 Lisää paperia.

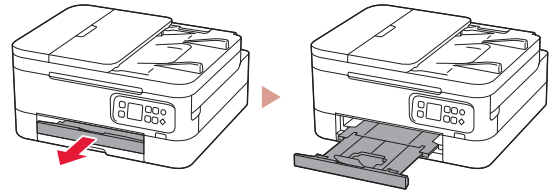
- Aseta vähintään 2 arkkiä tavallista Letter- tai A4-kokoista paperia.
- Aseta paperi edessä olevaa paperiohjainta vasten ja kohdista oikeanpuoleinen paperiohjain paperin leveyteen.



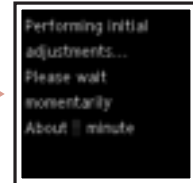
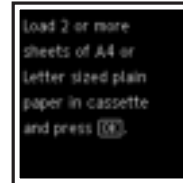
5 Aseta kasetti takaisin.



6 Vedä paperin luovutustaso esiin.



7 Paina OK-painiketta.



»»» Huomautus

Kohdistusprosessissa tulostetaan kaksi kaksipuolista arkkiä.

Älä vedä paperia ulos tai käytä tulostinta, ennen kuin kohdistus on valmis.

8 Tarkista, että seuraava näyttö tulee näkyviin.



Jos käytät tulostinta ilman yhteyttä muihin laitteisiin, asetus on valmis.

Valitse yhteysmenetelmä, joka parhaiten vastaa tulostimen käyttötapaa.

- Tulostimen käyttö ilman yhteyttä muihin laitteisiin
 - ➔ Asennus on nyt valmis.
- Tulostimen käyttö tietokone tai älypuhelin yhdistettynä
 - ➔ Jatka seuraavalta sivulta.

Mitä laitetta olet yhdistämässä?



Tietokone



Tietokone ja
älypuhelin



Älypuhelin






6-a

Yhdistäminen tietokoneeseen

Jos käytät useita tietokoneita, suorita nämä vaiheet jokaiselle tietokoneelle.



- 1 Avaa tietokoneesta Canon-verkkosivusto.
 <https://ij.start.canon>
- 2 Valitse  **Määrittys**.
- 3 Anna tulostinmallin nimi ja valitse **Siirry**.
- 4 Valitse **Aloita**.
- 5 Valitse **(B) Yhdistäminen tietokoneeseen/älypuhelimeen**.
 - Seuraavat vaiheet ovat Windows-käyttäjille.
- 6 Valitse **Lataa**.
- 7 Suorita ladattu tiedosto.
- 8 Valitse **Aloita asetukset (Start Setup)**.

- 9 Noudata näytön ohjeita.
 - Näissä toiminnoissa voi kestää hetken.
 - Jos haluat liittää myös älypuhelimeen, katso kohtaa "6-b. Yhdistäminen älypuhelimeen" sivulla 5.



Asennus-CD-levyn käyttö

Kaksoisnapsauta CD-levyn **EasySetup.exe**-tiedostoa, ja jatka sitten vaiheesta 3. Jos sinulla ei ole internet-yhteyttä, avaa CD-levyn **win**-kansio ja kaksoisnapsauta **SETUP.exe**. Tämä asentaa tulostinajurin.

6-b

Yhdistäminen älypuhelimien

Jos käytät useita älypuhelimia, suorita nämä vaiheet jokaiselle älypuhelimelle.



1 Asenna "Canon PRINT Inkjet/SELPHY" -sovellus älypuheliimeen.



- Etsi App Store- tai Google Play -kaupassa tekstiä "Canon PRINT".
- Lataa sovellus avaamalla ensin Canon-sivusto.



2 Avaa asennettu sovellus ja lisää sitten tulostin noudattamalla sovelluksen näytön ohjeita.



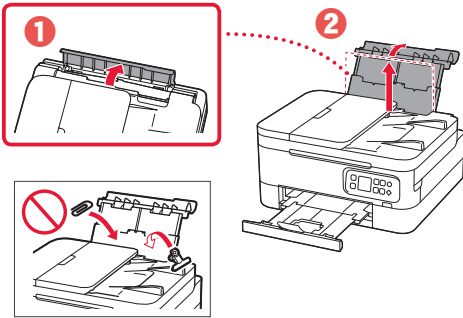
Kun olet lisännyt tulostimen, voit tulostaa älypuhelimestasi.

Jos tulostat valokuvia, katso kohtaa "Valokuvapaperin asettaminen" sivulla 6.

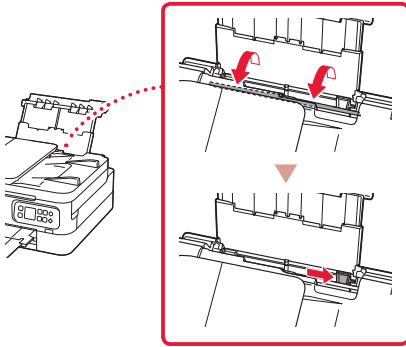
Valokuvapaperin asettaminen

Valokuvapaperia voi lisätä ainoastaan takalokeroon.

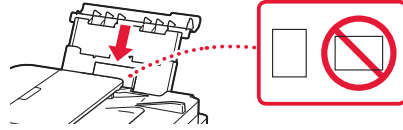
- 1 Avaa takalokeron kansi ja avaa sitten paperituki.



- 2 Avaa syöttöaukon kansi ja liu'uta oikeanpuoleinen paperiohjain oikeaan reunaan.

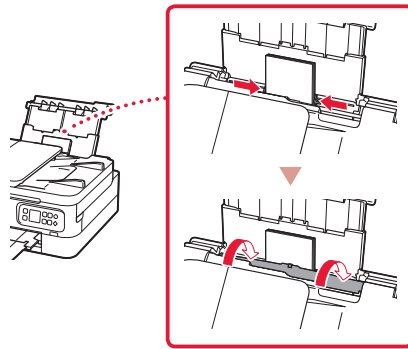


- 3 Aseta useita arkkeja valokuvapaperia tulostuspuoli ylöspäin.



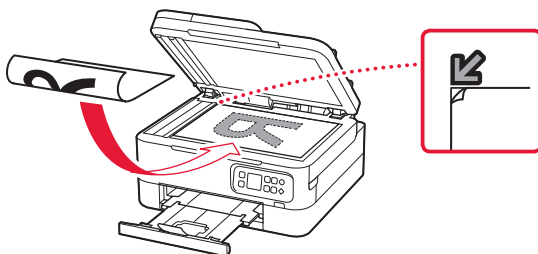
- 4 Kohdista paperiohjain paperiin ja sulje sitten syöttöaukon kansi.

- Jatka asetetun paperin tietojen asettamista noudattamalla näytössä näkyviä ohjeita.



Kopiointi

- 1 Kytke tulostimen virta.
- 2 Aseta tavallista Letter- tai A4-kokoista paperia.
- 3 Avaa asiakirjakkansi ja aseta asiakirja tasolle kopioitava puoli alaspäin. Kohdista asiakirja kohdistusmerkkiin (↙).



- 4 Sulje asiakirjakkansi.
- 5 Paina **OK**-painiketta.
- 6 Valitse **Kopiointiasetukset (Copy settings)**, ja paina sitten **OK**-painiketta.
- 7 Määritä tulostusasetukset ▲-, ▼- ja **OK**-painikkeilla.



- 8 Paina **Aloita (Start)**-painiketta.



Access Online Manual
Zugriff auf das Online-Handbuch
Accedere al Manuale online
Acceso al Manual en línea
Läs Onlinehandbok
Åbn Online vejledning

Accès au Manuel en ligne
Online handleiding openen
Acesse o Manual On-line
Αποκτήστε πρόσβαση στο Εγχειρίδιο Online
Gå til Nettbasert manual
Online-käyttöopas-oppaan käyttö

From your browser

À partir de votre navigateur

Über Ihren Browser

Via de browser

Dal browser

Do seu navegador

Desde su navegador

Από το πρόγραμμα περιήγησής σας

Från webbläsaren

Fra nettleseren din

Fra din browser

Selaimesta

